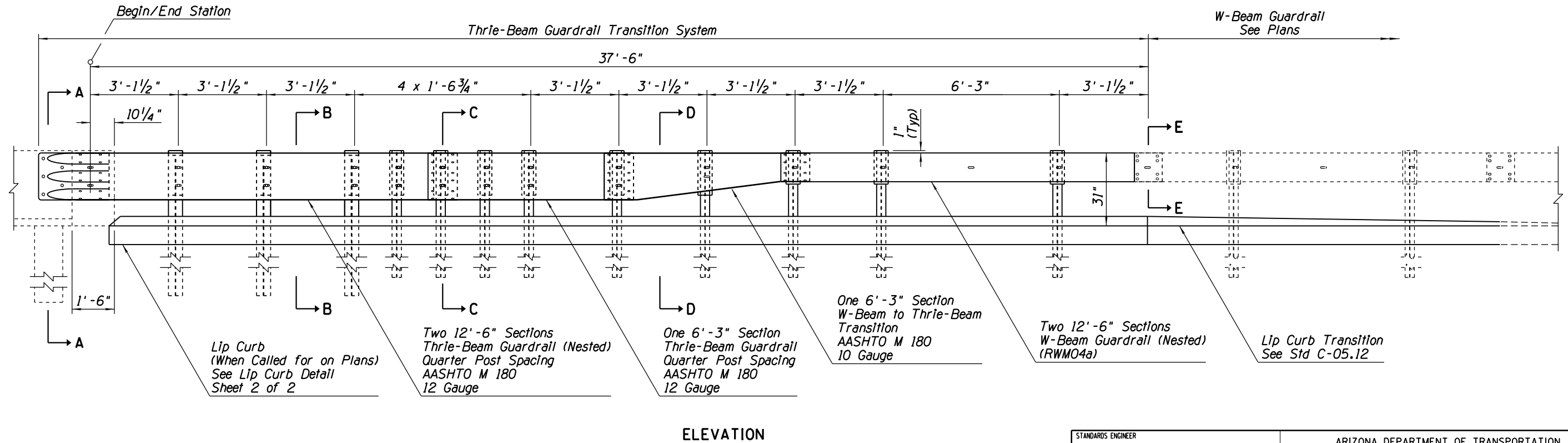
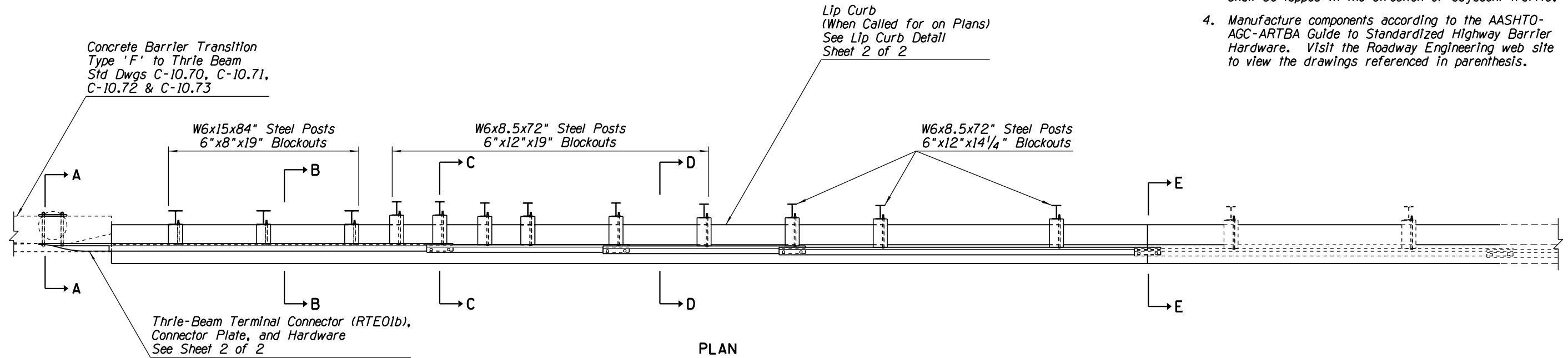


**GENERAL NOTES**

1. Curbing is not required when drainage flows transversely away from barrier.
2. Treatment at back of lip curb modified for constructability purposes. Front slope and height of lip curb shall not be exceeded.
3. Thrie-beam terminal connector to thrie-beam splice shall be lapped in the direction of adjacent traffic.
4. Manufacture components according to the AASHTO-AGC-ARTBA Guide to Standardized Highway Barrier Hardware. Visit the Roadway Engineering web site to view the drawings referenced in parenthesis.



Note to Designer: The information presented in this Standard Drawing has been prepared in accordance with recognized engineering principles and is for general use. It should not be used for specific application without competent professional examination and verification of its suitability and applicability by a licensed professional engineer. Content's within the inner border line shall not be altered.

PRIOR DISTRIBUTION DATE

STANDARDS ENGINEER <b>J. C. COOPER</b>	ARIZONA DEPARTMENT OF TRANSPORTATION INFRASTRUCTURE DELIVERY AND OPERATIONS DIVISION <b>ROADWAY GROUP STANDARD DRAWING</b>	
RECOMMENDED FOR APPROVAL		
GROUP MANAGER <b>D. R. HENRY</b>		
APPROVED		
STANDARDS COMMITTEE APPROVED FOR DISTRIBUTION	12/17 DATE	
GUARDRAIL TRANSITION TO CONCRETE BARRIER STEEL POST		DRAWING NO. <b>C-10.31</b> Sheet 1 of 2