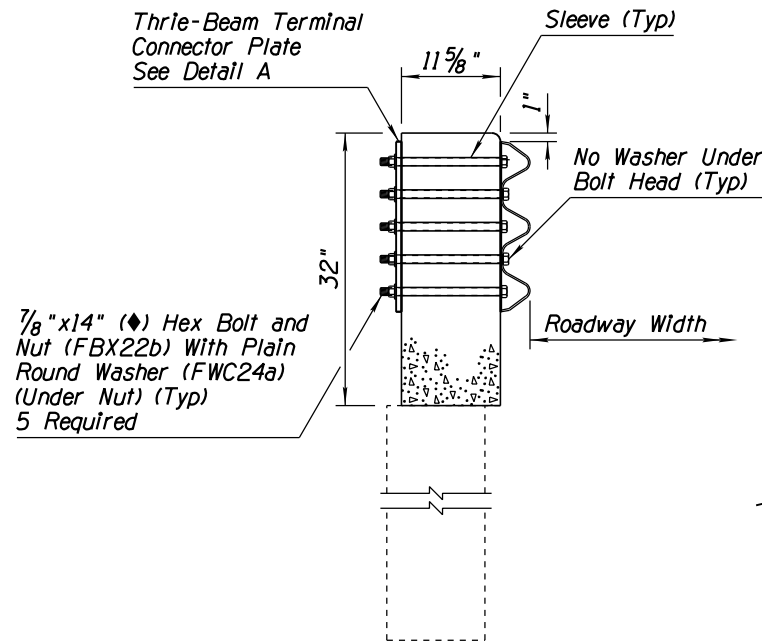


Note to Designer: The information presented in this Standard Drawing has been prepared in accordance with recognized engineering principles and is for general use. It should not be used for specific application without competent professional examination and verification of its suitability and applicability by a licensed professional engineer. Content's within the inner border line shall not be altered.

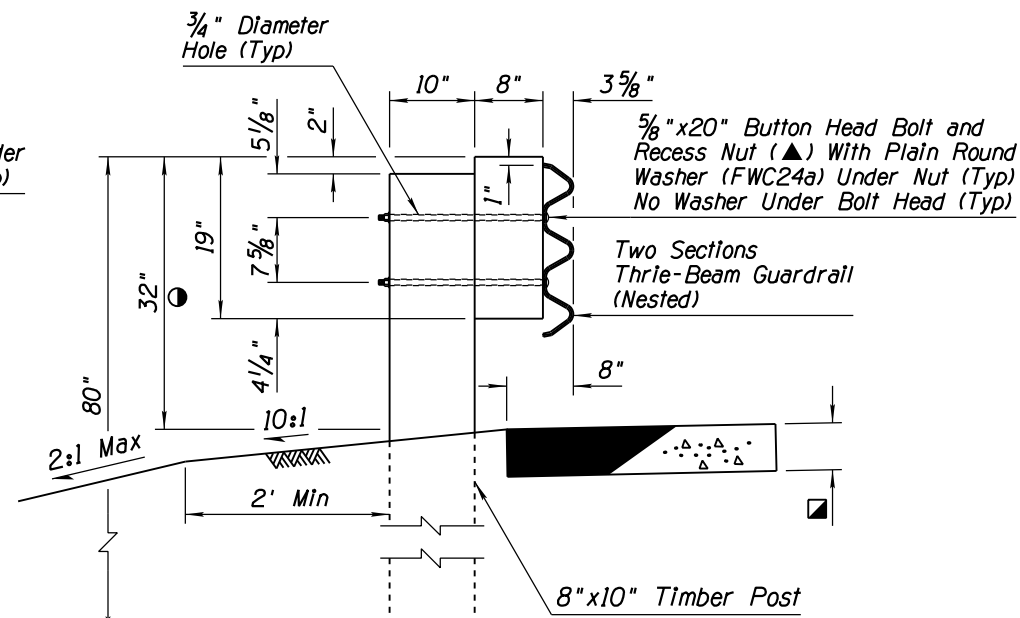
PRIOR DISTRIBUTION DATE 05/12

GENERAL NOTES

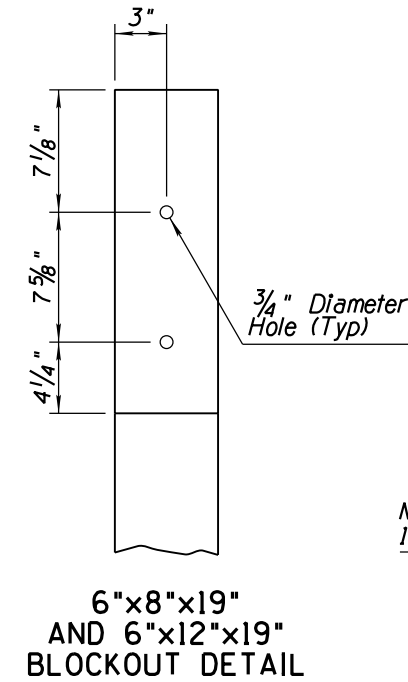
- Anchor plate shall conform to ASTM specification A36. bolts, washers and anchor plate shall be galvanized or, at the contractors option, stainless steel bolts and washers may be used.
- Manufacture components according to the AASHTO-AGC-ARTBA Guide to Standardized Highway Barrier Hardware. Visit the Roadway Engineering web site to view the drawings referenced in parenthesis.
- Curb shall not be used with timber post guardrail transition.
 - 32" dimension to top of blockout is measured at face of guardrail. Top of guardrail shall be 31" measured at face of rail.
 - ▲ Shall meet the same material requirements as FBB07 with the noted length.
 - 3" min thick AC or 6" min thick PCCP



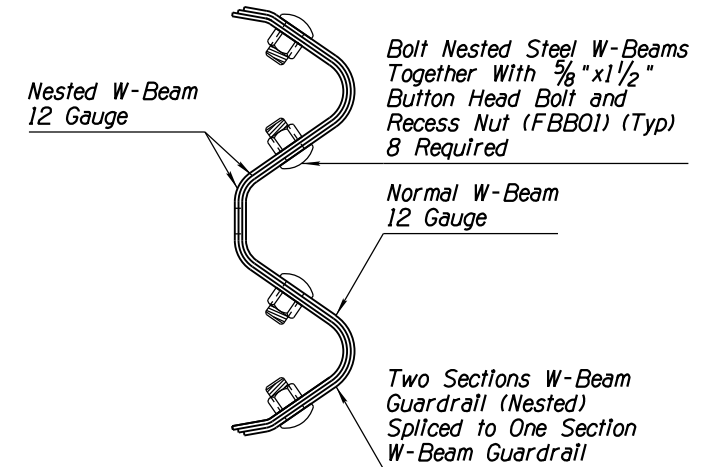
SECTION A-A ●



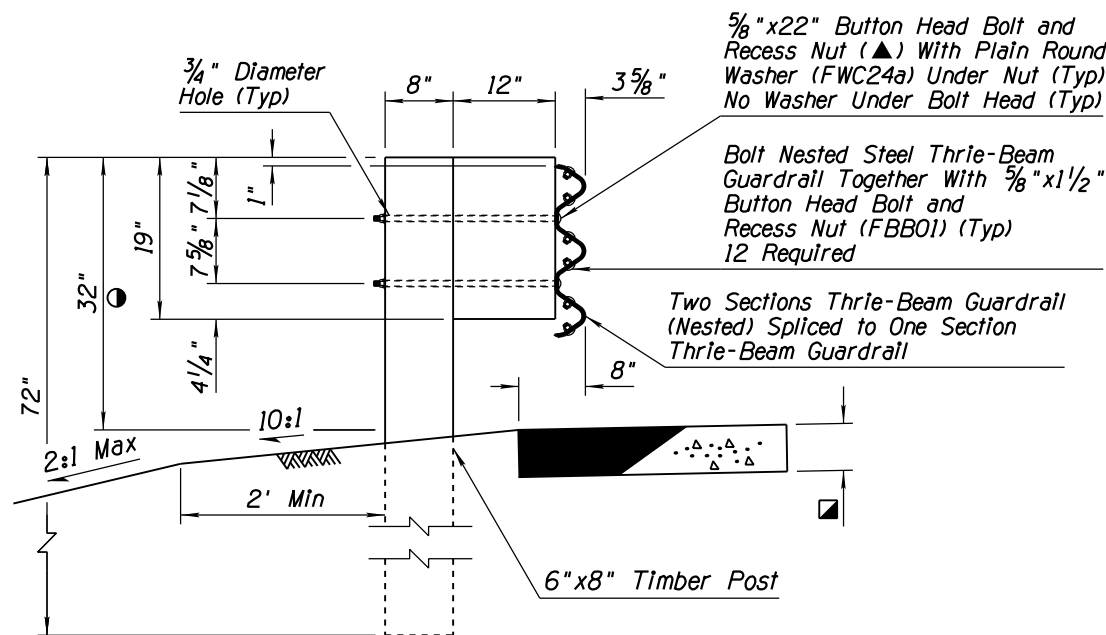
SECTION B-B



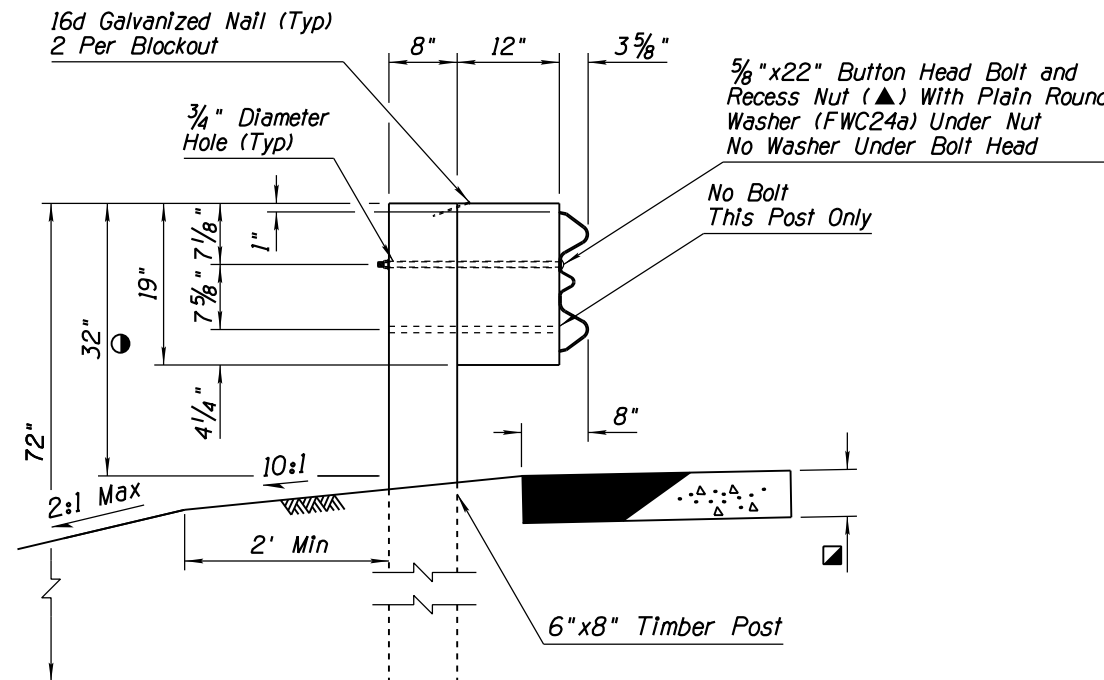
6"x8"x19" AND 6"x12"x19" BLOCKOUT DETAIL



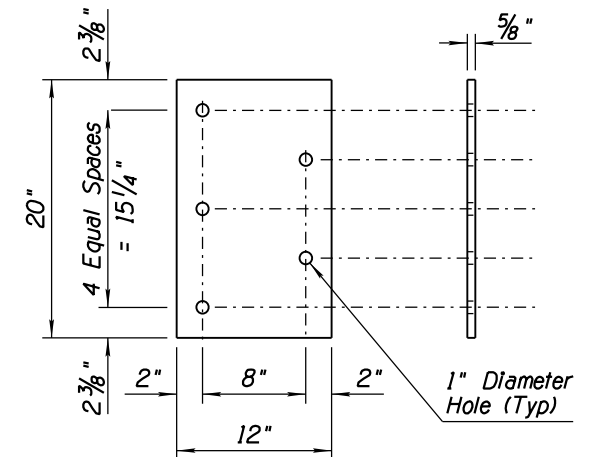
SECTION E-E



SECTION C-C



SECTION D-D



DETAIL A THRIE-BEAM TERMINAL CONNECTOR PLATE

STANDARDS ENGINEER J. C. COOPER	ARIZONA DEPARTMENT OF TRANSPORTATION INFRASTRUCTURE DELIVERY AND OPERATIONS DIVISION ROADWAY GROUP STANDARD DRAWING	
RECOMMENDED FOR APPROVAL GROUP MANAGER D. R. HENRY	GUARDRAIL TRANSITION TO CONCRETE BARRIER TIMBER POST	DRAWING NO. C-10.30
APPROVED STANDARDS COMMITTEE APPROVED FOR DISTRIBUTION	DATE 12/17	Sheet 2 of 2