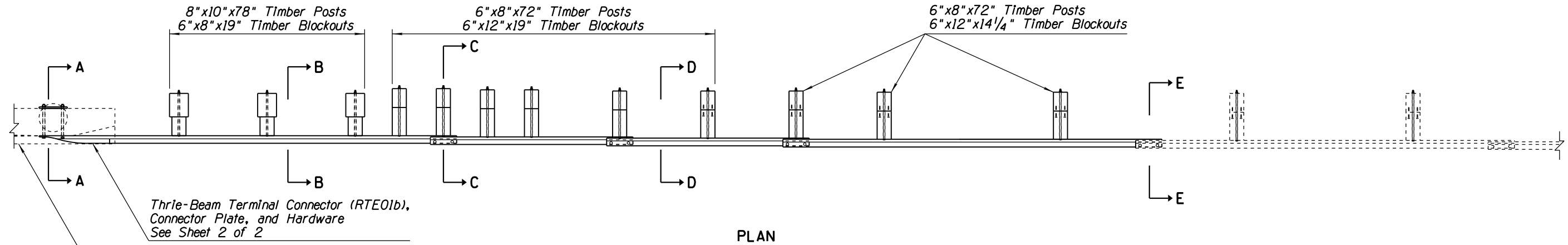


GENERAL NOTES

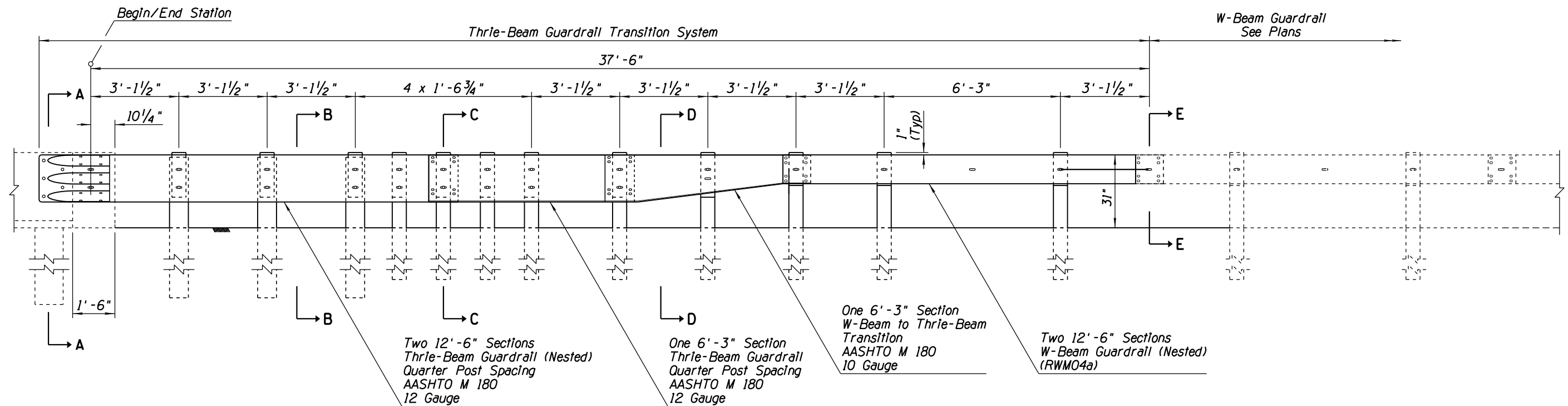
1. Thrie-beam terminal connector to thrie-beam splice shall be lapped in the direction of adjacent traffic.
2. Manufacture components according to the AASHTO-AGC-ARTBA Guide to Standardized Highway Barrier Hardware. Visit the Roadway Engineering web site to view the drawings referenced in parenthesis.



PLAN

Thrie-Beam Terminal Connector (RTE01b),
Connector Plate, and Hardware
See Sheet 2 of 2

Concrete Barrier Transition
Type 'F' to Thrie Beam
Std Dwgs C-10.70, C-10.71,
C-10.72 & C-10.73



ELEVATION

Note to Designer: The information presented in this Standard Drawing has been prepared in accordance with recognized engineering principles and is for general use. It should not be used for specific application without competent professional examination and verification of its suitability and applicability by a licensed professional engineer. Contents within the inner border line shall not be altered.

05/12

PRIOR DISTRIBUTION DATE

STANDARD ENGINEER J. C. COOPER	ARIZONA DEPARTMENT OF TRANSPORTATION INFRASTRUCTURE DELIVERY AND OPERATIONS DIVISION ROADWAY GROUP STANDARD DRAWING	
RECOMMENDED FOR APPROVAL GROUP MANAGER D. R. HENRY	GUARDRAIL TRANSITION TO CONCRETE BARRIER TIMBER POST	DRAWING NO. C-10.30
APPROVED STANDARDS COMMITTEE APPROVED FOR DISTRIBUTION		DATE 12/17