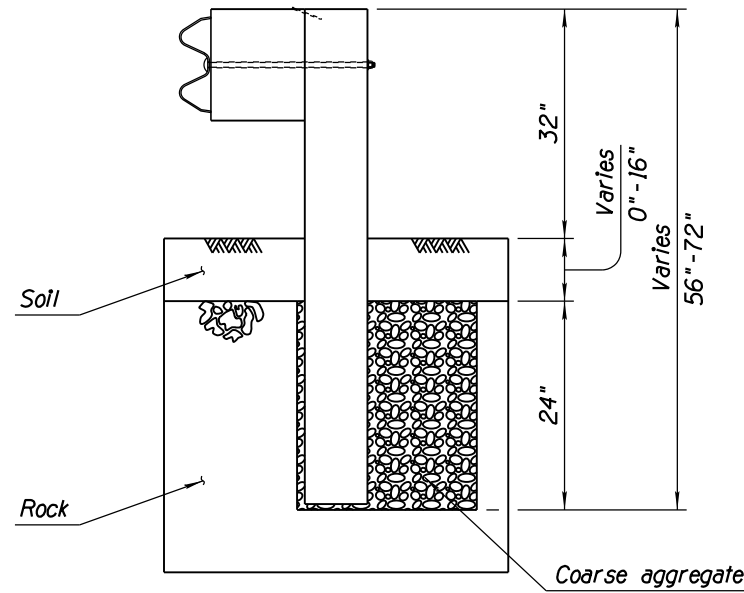
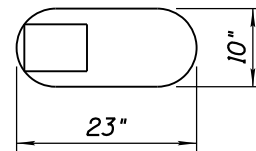


Note to Designer: The information presented in this Standard Drawing has been prepared in accordance with recognized engineering principles and is for general use. It should not be used for specific application without competent professional examination and verification of its suitability and applicability by a licensed professional engineer. Contents within the inner border line shall not be altered.

PRIOR DISTRIBUTION DATE 05/12

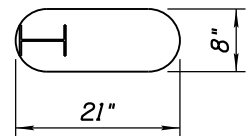


**ELEVATION
CASE 1**

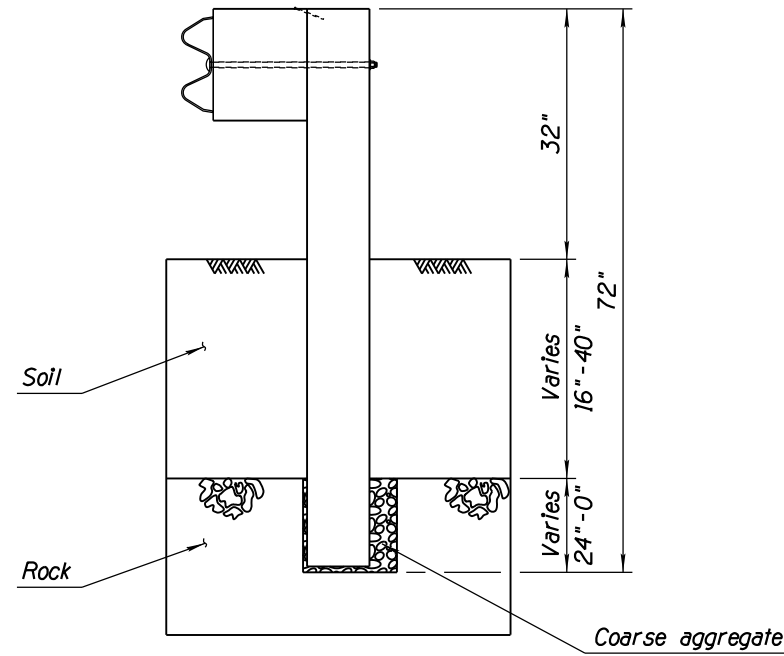


**PLAN VIEW
WOOD POST**

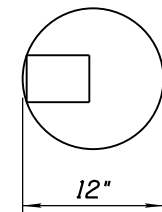
Or



**PLAN VIEW
STEEL POST**

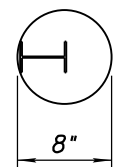


**ELEVATION
CASE 2**

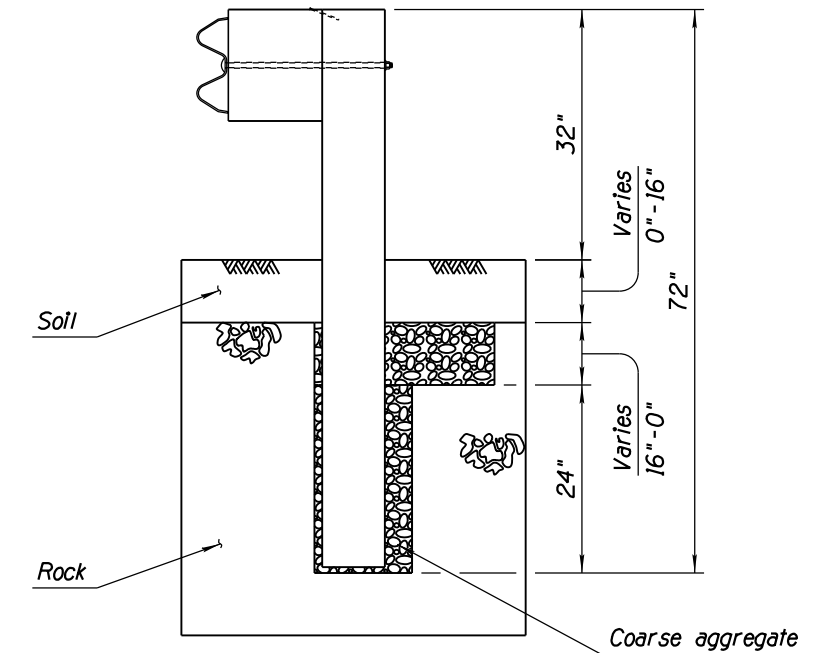


**PLAN VIEW
WOOD POST**

Or



**PLAN VIEW
STEEL POST**



**ELEVATION
CASE 3**

See Case 1 plan view for drill dimensions to 16" deep.
See Case 2 plan view for drill dimensions 16" to 40" deep.

GENERAL NOTES

1. Use case 1 when overlying soil depth is less than 16".
Use case 2 when overlying soil depth is between 16" and 40".
2. A 23" circular hole for wood posts or a 21" circular hole for steel posts may be substituted for oblong holes shown.
3. Use coarse aggregate similar to ASTM C33 Size No.57.
4. Use case 2 or 3 for 72" long transition post in C-10.30 and C-10.31 applications. For 8"x10" transition posts, drill 14" diameter by 48" deep hole and backfill with coarse aggregate. For W6x15 transition posts, drill 10" diameter by 54" deep hole and backfill with coarse aggregate.
5. Drill 8" diameter by 70" deep hole for C-10.08 foundation tubes.
6. Follow manufacturers guidance for treatment of end terminal posts in rock.

STANDARDS ENGINEER J. C. COOPER	ARIZONA DEPARTMENT OF TRANSPORTATION INFRASTRUCTURE DELIVERY AND OPERATIONS DIVISION ROADWAY GROUP STANDARD DRAWING	
RECOMMENDED FOR APPROVAL GROUP MANAGER D. R. HENRY	GUARDRAIL POST ROCK INSTALLATION	DRAWING NO. C-10.09
APPROVED STANDARDS COMMITTEE APPROVED FOR DISTRIBUTION —12/17— DATE		