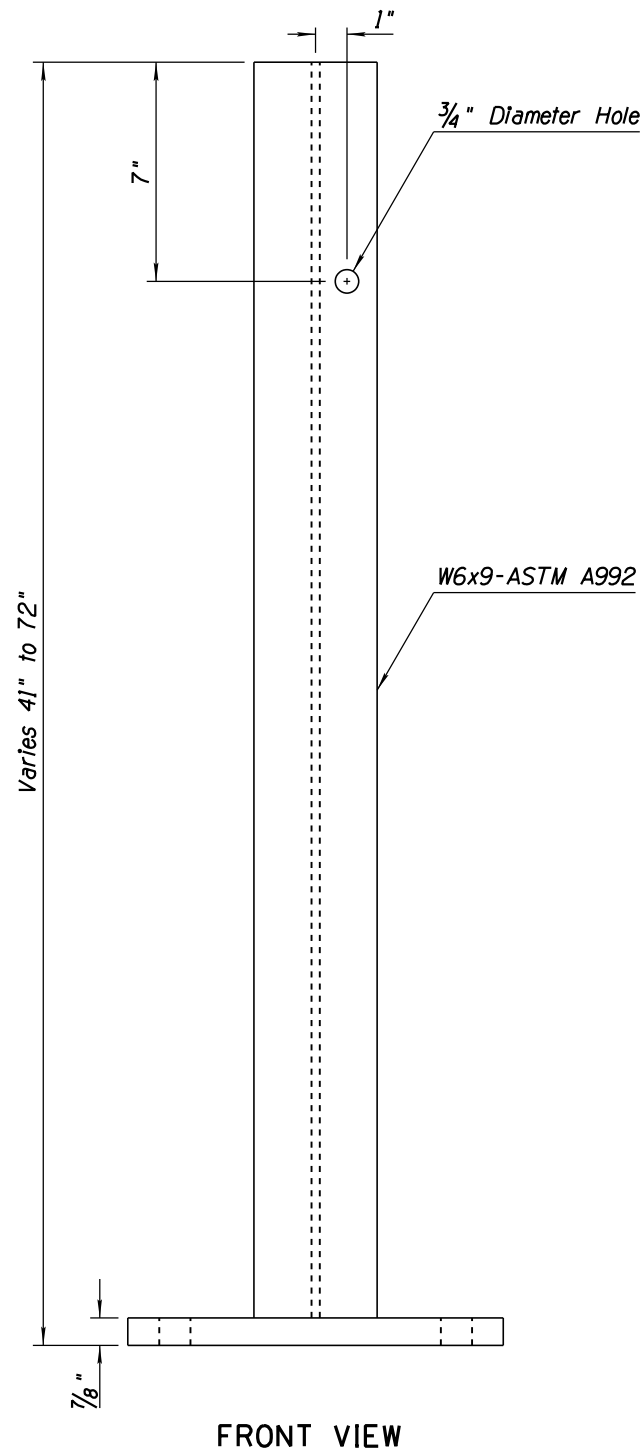
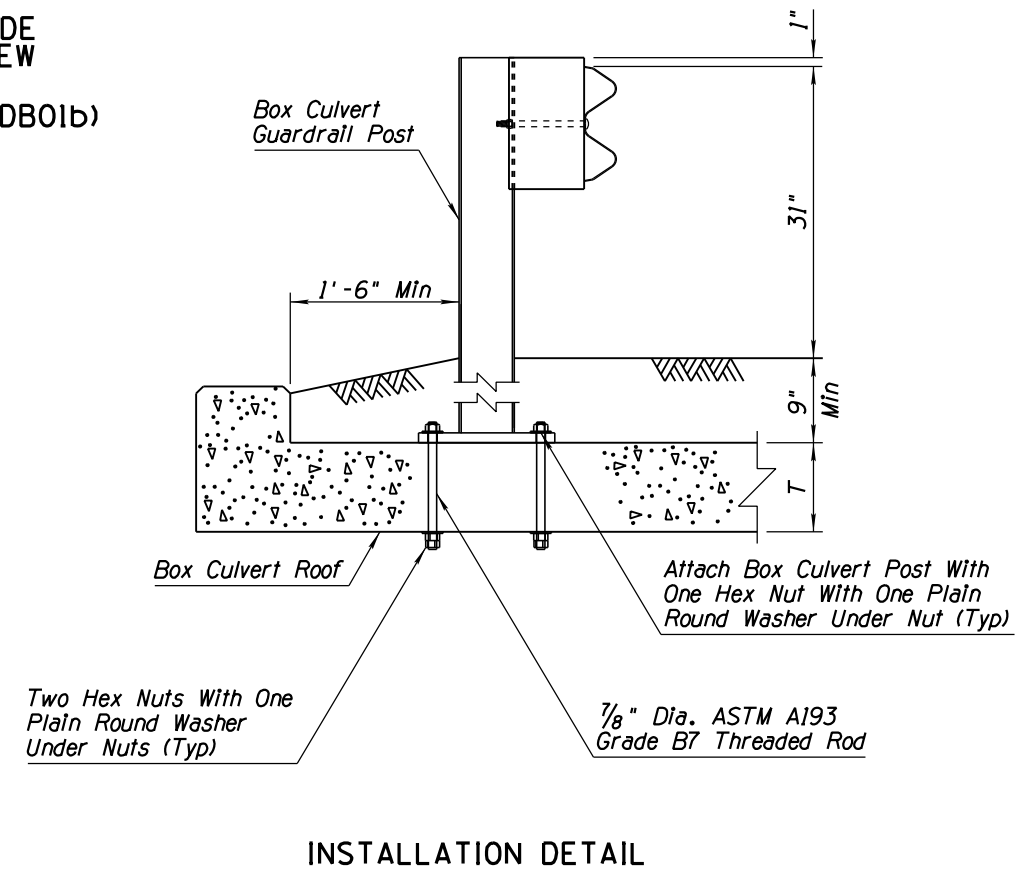
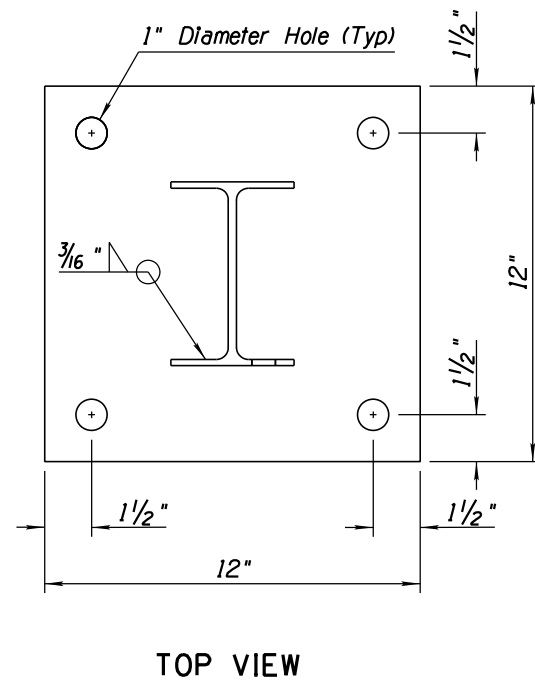
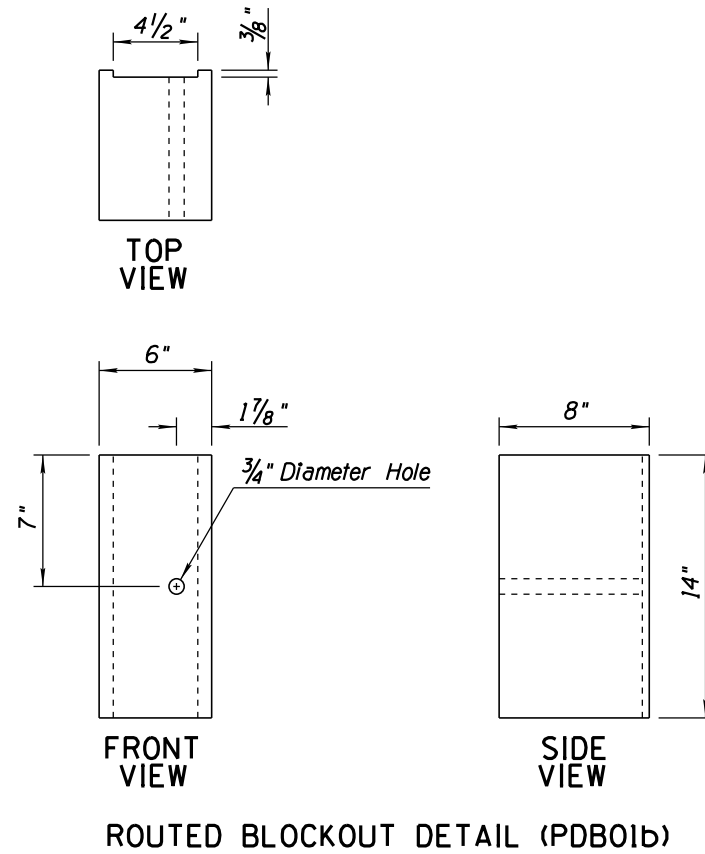


Note to Designer: The information presented in this Standard Drawing has been prepared in accordance with recognized engineering principles and is for general use. It should not be used for specific application without competent professional examination and verification of its suitability and applicability by a licensed professional engineer. Contents within the inner border line shall not be altered.

PRIOR DISTRIBUTION DATE 05/12



BOX CULVERT GUARDRAIL POST DETAIL



GENERAL NOTES

1. See Std Dwgs C-10.03 and C-10.04 for additional information and dimensions.
2. Guardrail shall be lapped in the direction of adjacent traffic.
3. Where bolting through the top of box culvert is not practical, the bolts may be attached to the top of the box culvert using epoxy. The bolts shall be embedded a minimum of 6 inches into the concrete.
4. Manufacture components according to the AASHTO-AGC-ARTBA Guide to Standardized Highway Barrier Hardware. Visit the Roadway Engineering web site to view the drawings referenced in parenthesis.

STANDARDS ENGINEER J. C. COOPER	ARIZONA DEPARTMENT OF TRANSPORTATION INFRASTRUCTURE DELIVERY AND OPERATIONS DIVISION ROADWAY GROUP STANDARD DRAWING	
RECOMMENDED FOR APPROVAL GROUP MANAGER D. R. HENRY	W-BEAM GUARDRAIL BOX CULVERT GUARDRAIL POST	DRAWING NO. C-10.07
APPROVED STANDARDS COMMITTEE APPROVED FOR DISTRIBUTION		DATE 12/17
		Sheet 2 of 2