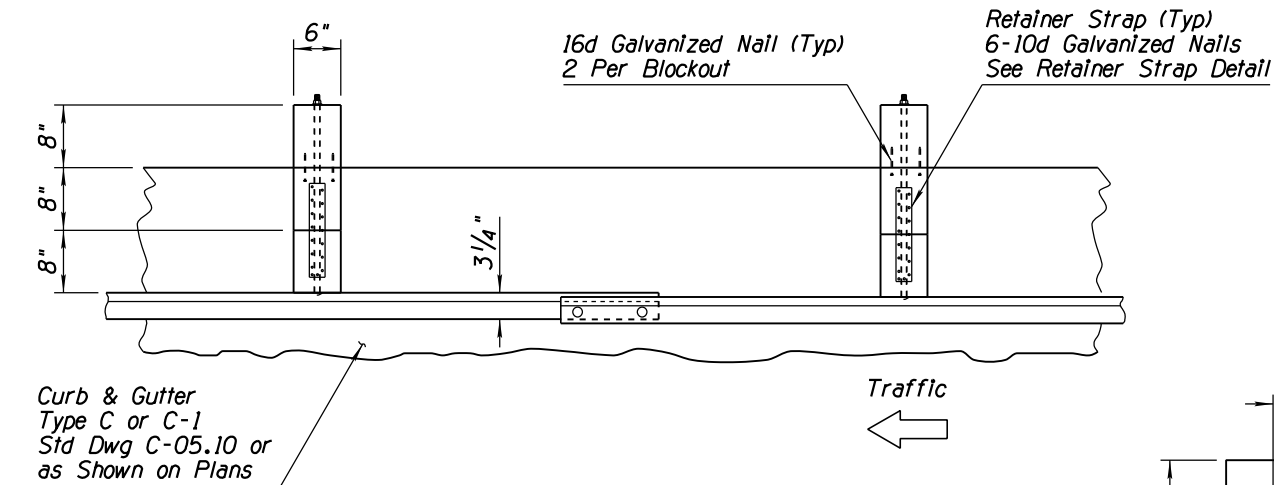
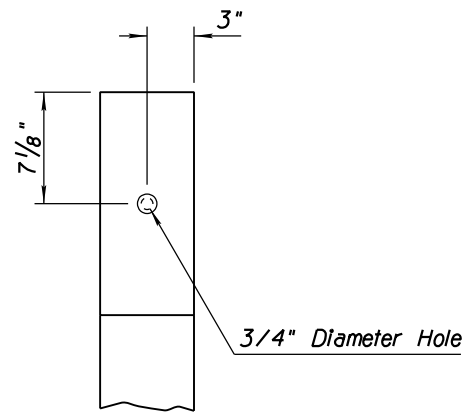


Note to Designer: The information presented in this Standard Drawing has been prepared in accordance with recognized engineering principles and is for general use. It should not be used for specific application without competent professional examination and verification of its suitability and applicability by a licensed professional engineer. Contents within the inner border line shall not be altered.

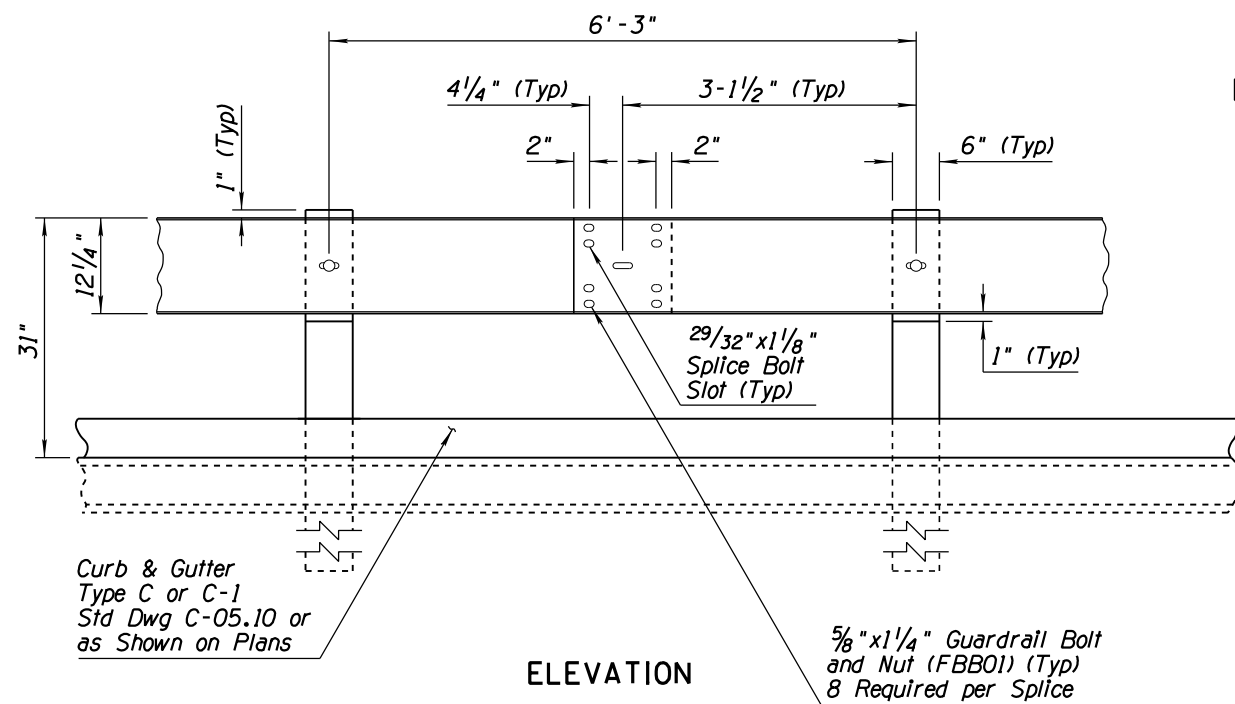
PRIOR DISTRIBUTION DATE 05/12



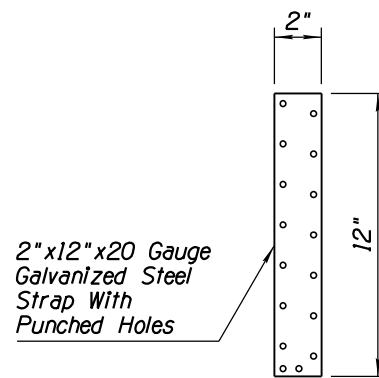
PLAN



BLOCKOUT DETAIL



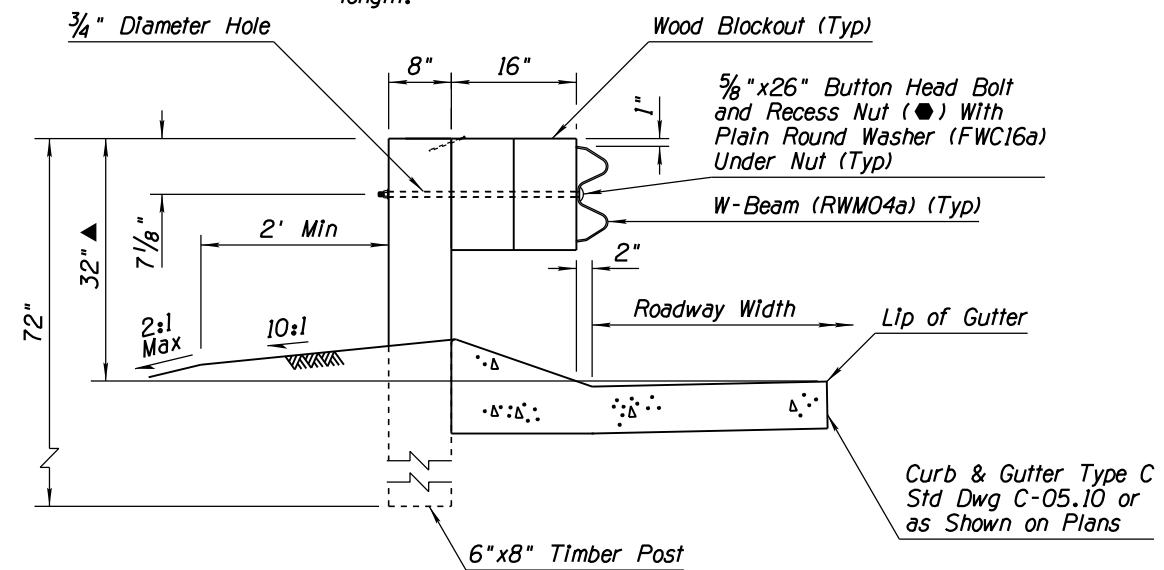
ELEVATION



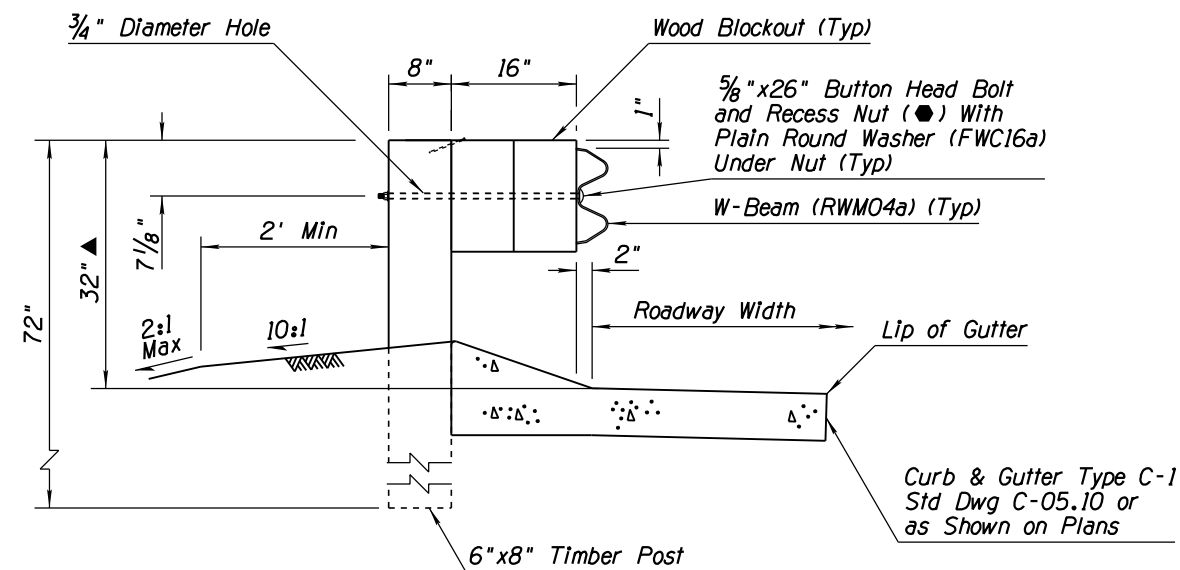
RETAINER STRAP DETAIL

GENERAL NOTES

1. Height of curb shall not exceed 4 inches.
 2. Guardrail shall be lapped in the direction of adjacent traffic.
 3. Manufacture components according to AASHTO-AGC-ARTBA Guide to Standardized Highway Barrier Hardware. Visit the Roadway Engineering web site to view the drawings referenced in parenthesis.
 4. Maintain a distance of 59" between w-beam face and rigid objects.
- ▲ For Type C curb and gutter, 32" dimension is at lip of gutter.
For Type C-1 curb and gutter, 32" dimension is at flowline.
 - Shall meet the same material requirements as FBB05 with the noted length.



SECTION WITH CURB & GUTTER TYPE C



SECTION WITH CURB & GUTTER TYPE C-1

STANDARDS ENGINEER J. C. COOPER	ARIZONA DEPARTMENT OF TRANSPORTATION INFRASTRUCTURE DELIVERY AND OPERATIONS DIVISION ROADWAY GROUP STANDARD DRAWING	
RECOMMENDED FOR APPROVAL GROUP MANAGER D. R. HENRY	W-BEAM GUARDRAIL (MODIFIED) WITH FREEWAY CURB AND GUTTER	DRAWING NO. C-10.05
APPROVED STANDARDS COMMITTEE APPROVED FOR DISTRIBUTION	12/17 DATE	Sheet 2 of 2