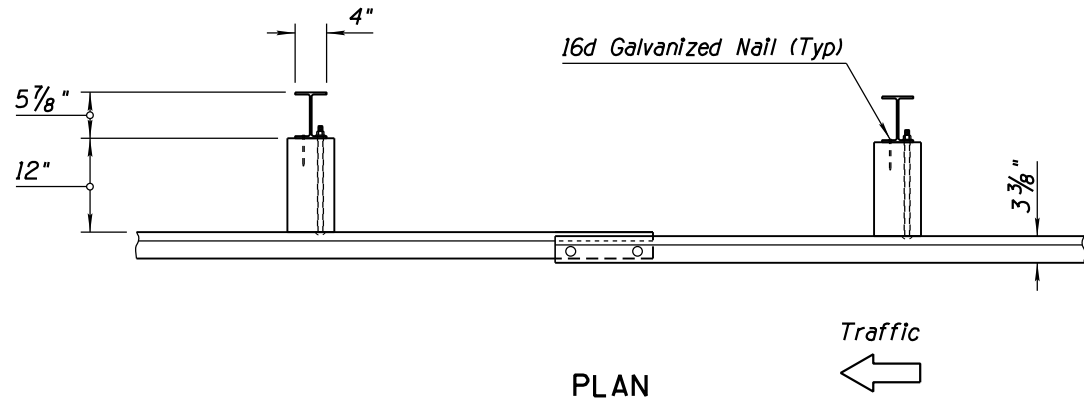
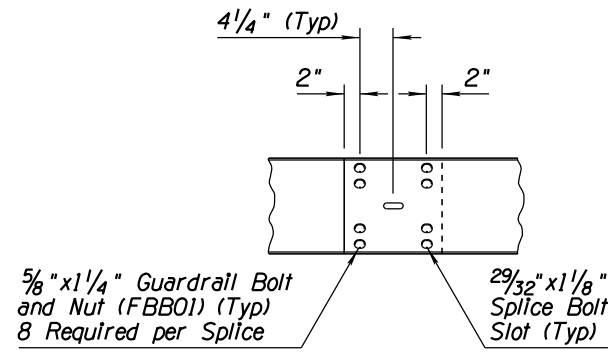


Note to Designer: The information presented in this Standard Drawing has been prepared in accordance with recognized engineering principles and is for general use. It should not be used for specific application without competent professional examination and verification of its suitability and applicability by a licensed professional engineer. Content's within the inner border line shall not be altered.

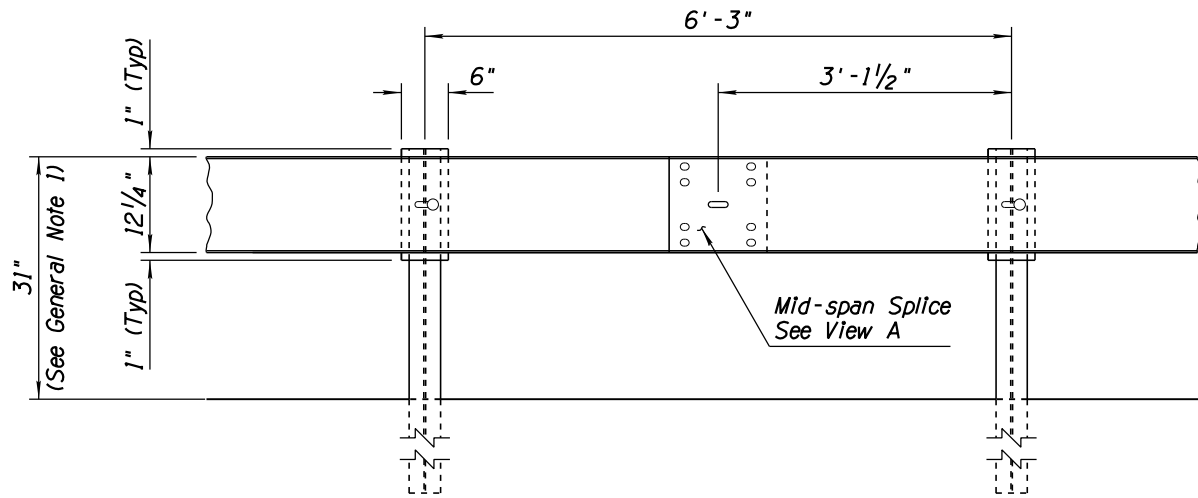
PRIOR DISTRIBUTION DATE 05/12



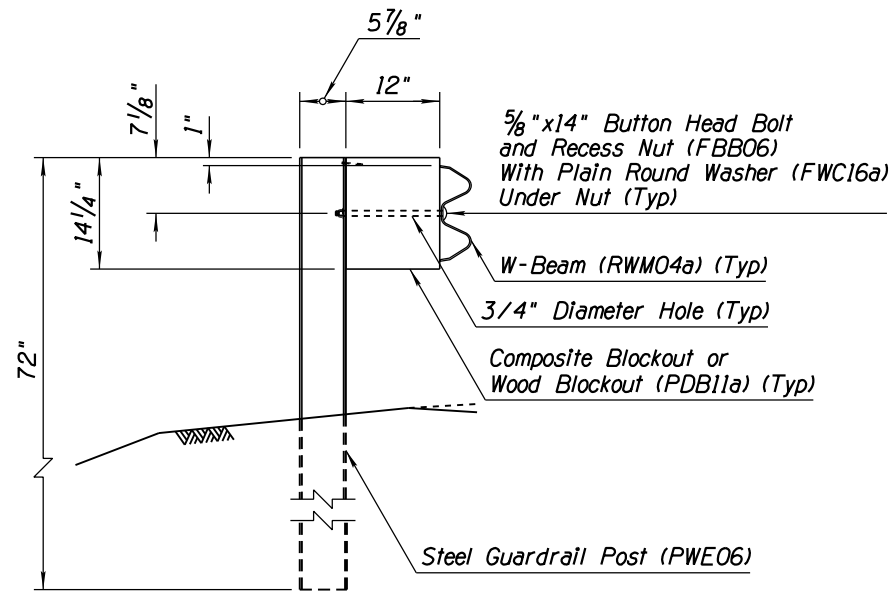
PLAN



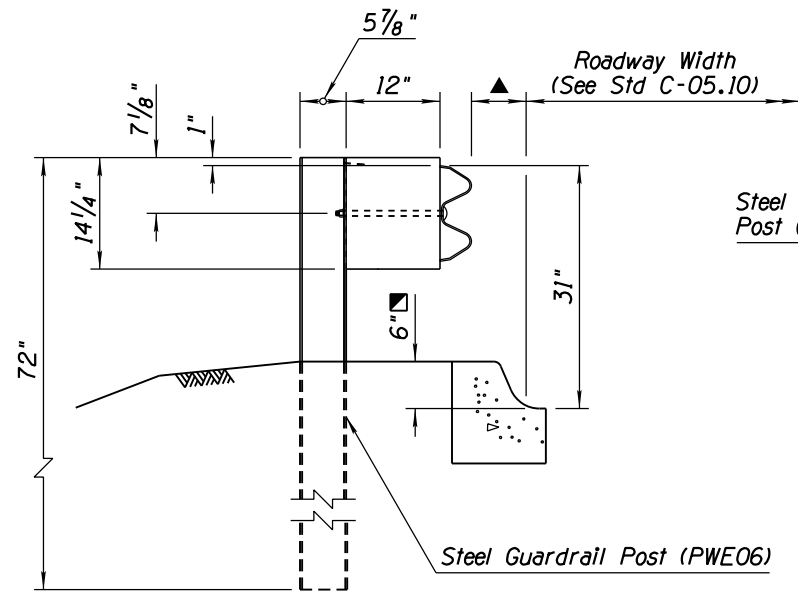
VIEW A



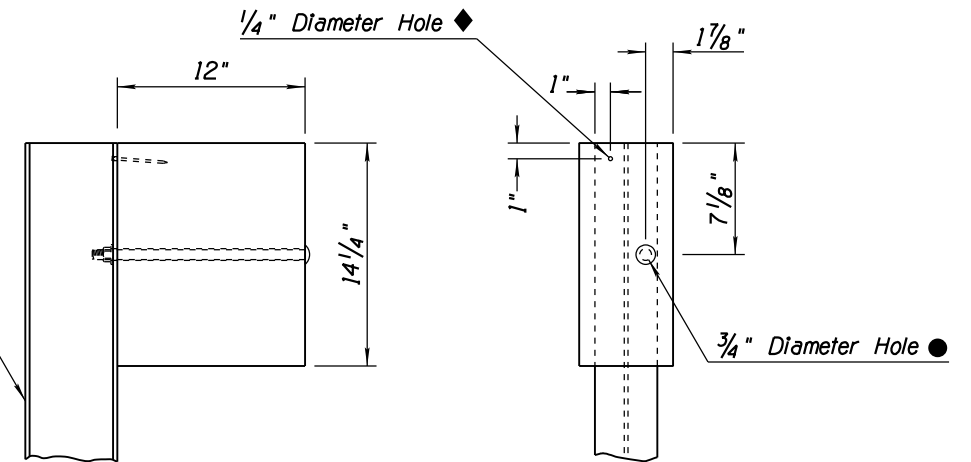
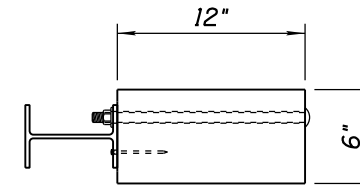
ELEVATION



SECTION SHOWN WITHOUT CURB



SECTION SHOWN WITH CURB



BLOCKOUT DETAIL

GENERAL NOTES

1. The control height for guardrail system is 31" to the top of rail, measured at the face of rail from the normal finished shoulder elevation.
2. Guardrail shall be lapped in the direction of adjacent traffic.
3. Wood blockout may be one 12" deep blockout, or a combination of one 8" deep blockout and one 4" deep blockout (PDB11b). If two blockouts are used, they must be nailed together by two 16d galvanized nails.
4. Manufacture components according to the AASHTO-AGC-ARTBA Guide to Standardized Highway Barrier Hardware. Visit the Roadway Engineering web site to view the drawings referenced in parenthesis.
5. Maintain a distance of 50" between w-beam face and rigid objects.
 - ▣ Use 6" maximum curb height.
 - ▲ Default value is 0". May vary up to 7" if shown on plans or directed by the Engineer.
 - An additional 3/4" diameter hole may be provided at the same location on the opposite side of web.
 - ◆ The 1/4" diameter hole may be eliminated when composite or routed wood blockouts are installed.

STANDARDS ENGINEER J. C. COOPER RECOMMENDED FOR APPROVAL GROUP MANAGER D. R. HENRY APPROVED STANDARDS COMMITTEE APPROVED FOR DISTRIBUTION	ARIZONA DEPARTMENT OF TRANSPORTATION INFRASTRUCTURE DELIVERY AND OPERATIONS DIVISION ROADWAY GROUP STANDARD DRAWING	
	W-BEAM GUARDRAIL, MGS BLOCKED-OUT STEEL POST	DRAWING NO. C-10.04