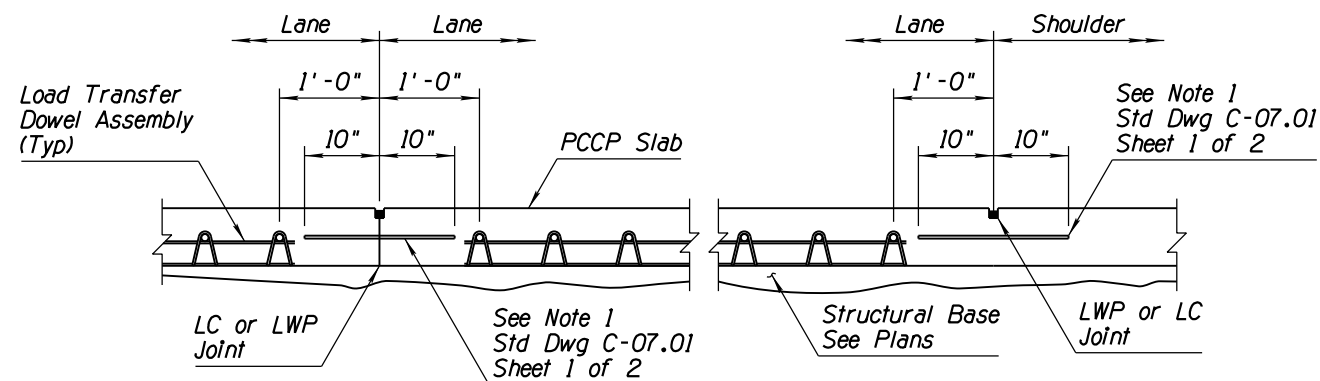
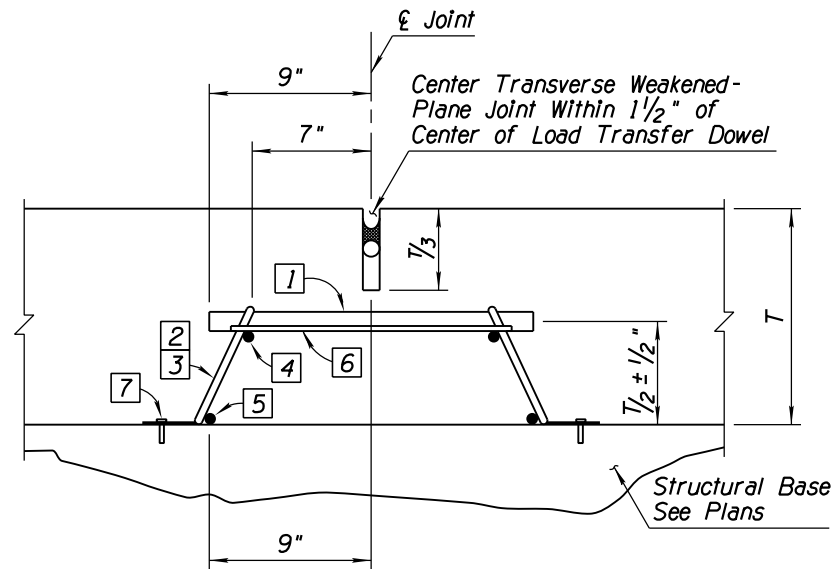
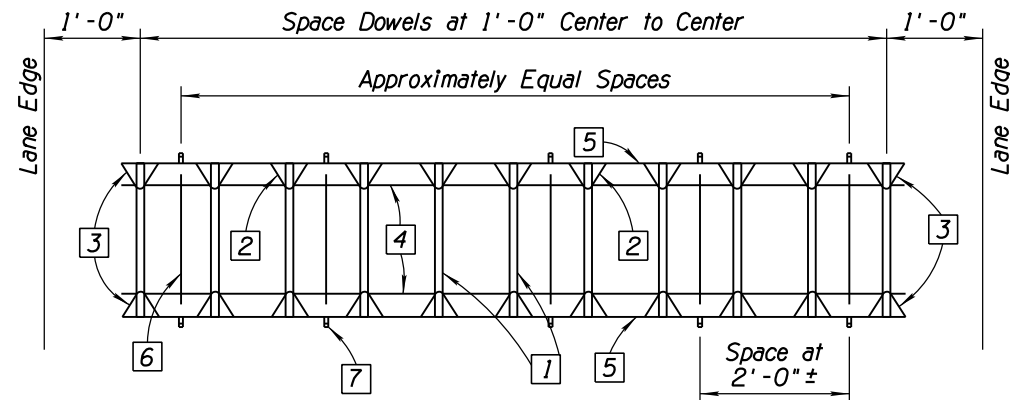
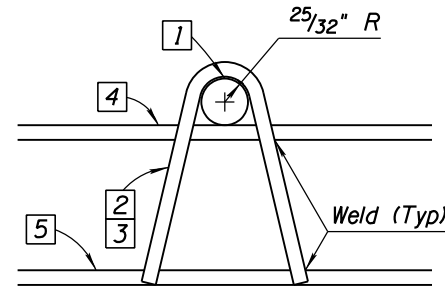
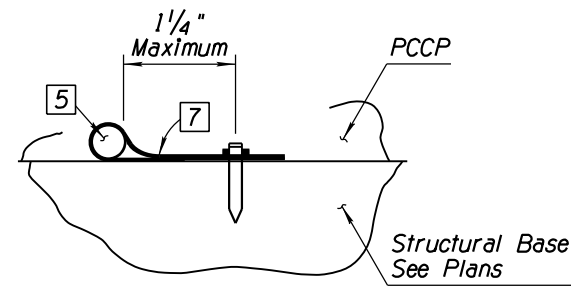
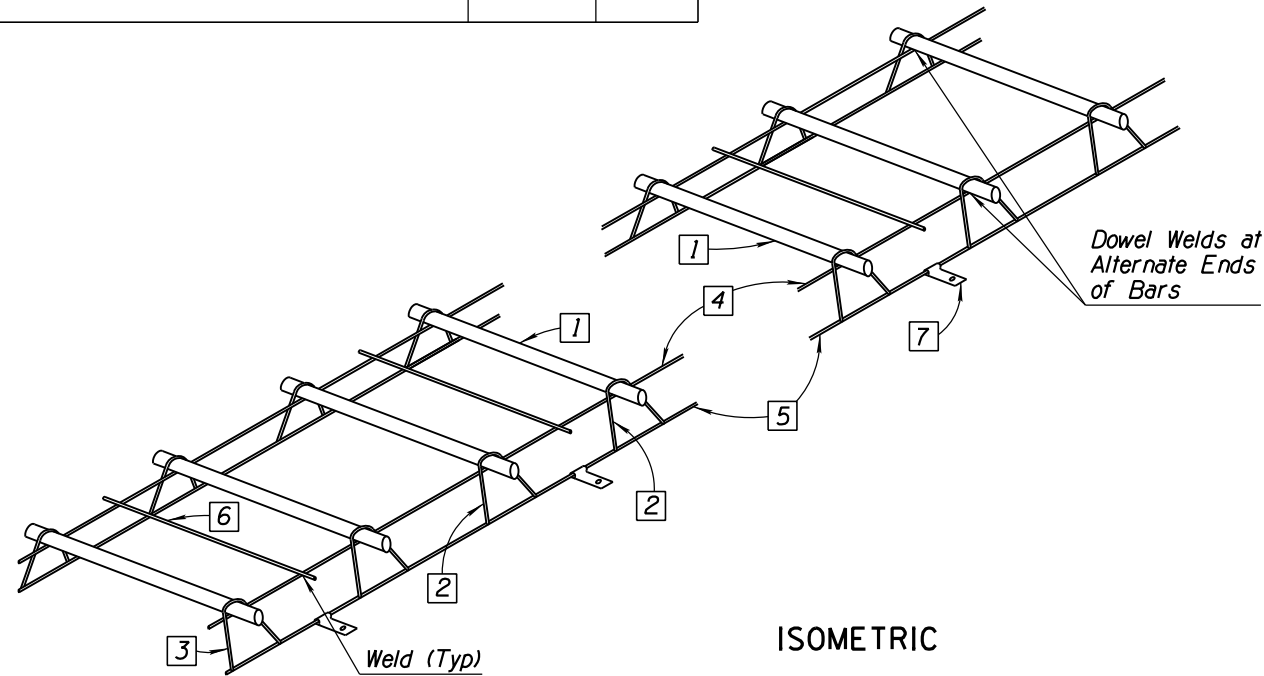


NO	DESCRIPTION OF REVISIONS	MADE BY	DATE
1	INSERTED NEW GENERAL NOTE 1, RENUMBERED ALL NOTES	RLF	11/07
2			
3			
4			



	Lane Width (Ft)		
	12	14	16
(Ft-In)	10-4	12-4	14-4

GENERAL NOTES

1. Load transfer dowel assemblies may be used when permitted in the project specifications.
2. Load transfer dowel assemblies are used with non-skewed, mainline PCCP joints.
3. When used, load transfer dowel assemblies are to be placed at each transverse weakened-plane joint on the traveled lanes as shown on the plans.
4. See Std Dwgs C-07.01 through C-07.04 for additional information.
5. See plans or Std Dwgs C-07.03 through C-07.04 for transverse joint spacing.
6. See plans for pavement thickness less than 12" or greater than 14".

Load transfer dowel assembly shall be assembled from the following materials:
(See Quantity Table)

- 1 Dowel bars - 1/2" diameter x 1'-6" plain round bars with coating. See Special Provisions.
- 2 Intermediate legs - 2 gauge or W-5.5 wire.
- 3 End legs - 2 gauge or W-5.5 wire.
- 4 Upper space bar - 2 gauge or W-5.5 wire x 1.
- 5 Lower space bar - 2 gauge or W-5.5 wire x 1.
- 6 Tie bars - W-1.5 wire x 16".
- 7 Anchor strap - 1"x3" steel strap, 0.079 thick. Place with a 1/2" minimum length steel nail for LCB, 4" minimum length steel nail for ACB or AB, 0.145 diameter ASTM A227 Class 1 with 1/4" head or washer.

Item No	Lane Width (Ft)		
	12	14	16
1	11	13	15
2	18	22	26
3	4	4	4
4	2	2	2
5	2	2	2
6	5	6	7
7	10	12	14

APPROVED FOR DESIGN	STATE OF ARIZONA DEPARTMENT OF TRANSPORTATION ROADWAY STANDARD DRAWINGS	REV. 5/12
APPROVED FOR DISTRIBUTION	LOAD TRANSFER DOWEL ASSEMBLY	DRAWING NO. C-07.02