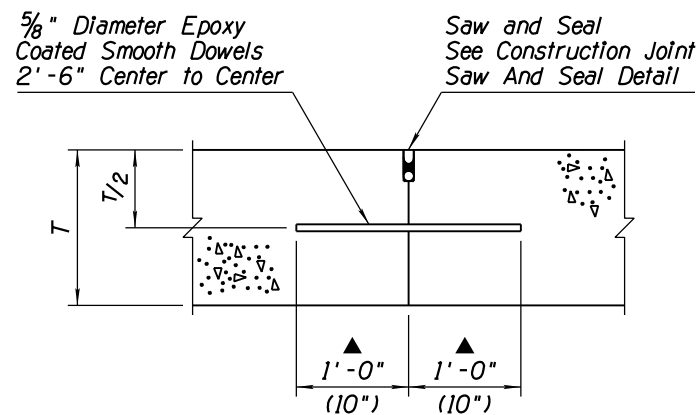
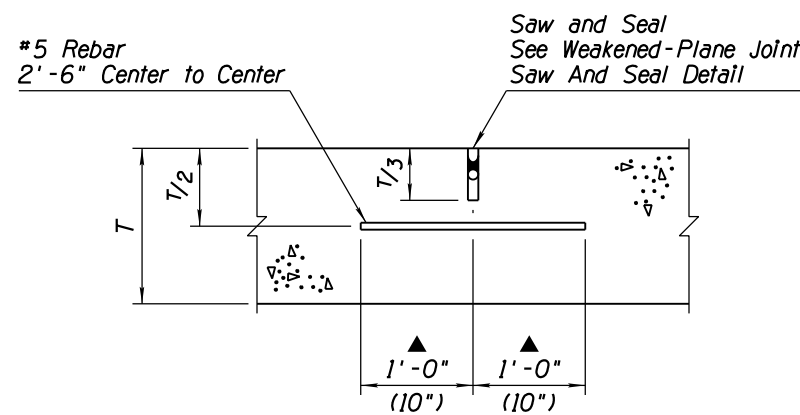


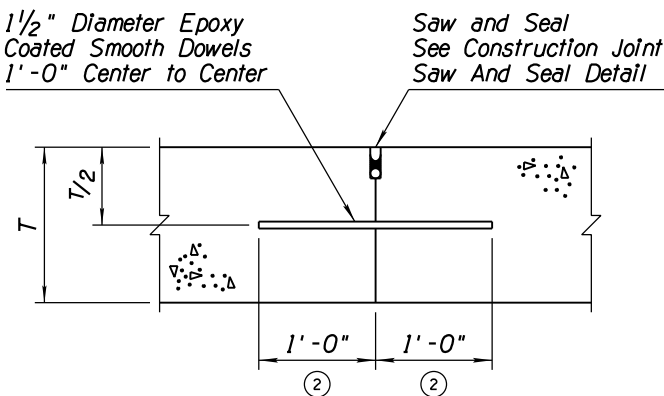
NO.	DESCRIPTION OF REVISIONS	MADE BY	DATE
1	ADDED DEFINITION FOR 'PE'	RLF	9/04
2	REVISED DIMENSION FORMAT	RLF	7/05
3	REMOVED 'INITIAL SAWCUT' NOTATION	RLF	7/05
4			



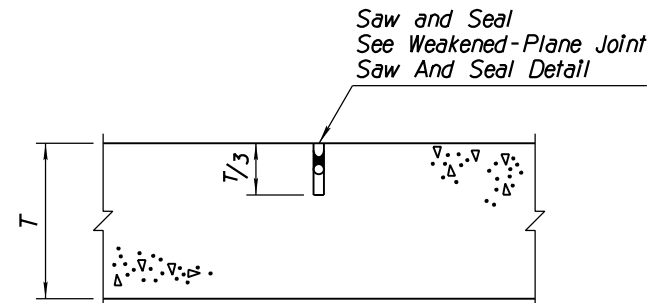
LONGITUDINAL CONSTRUCTION JOINT
LC Joint



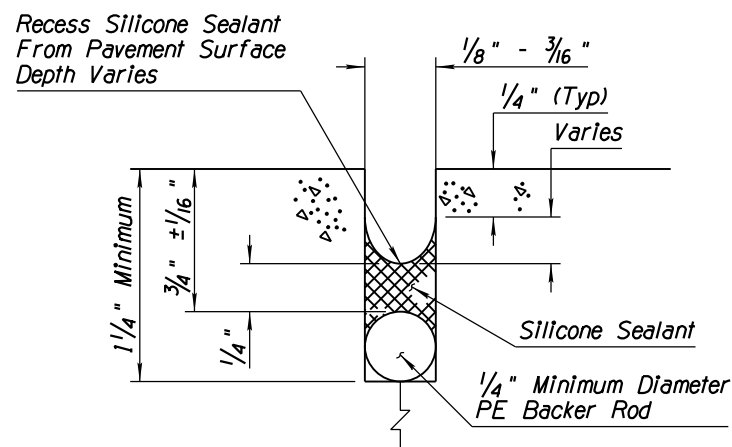
LONGITUDINAL WEAKENED-PLANE JOINT
LWP Joint



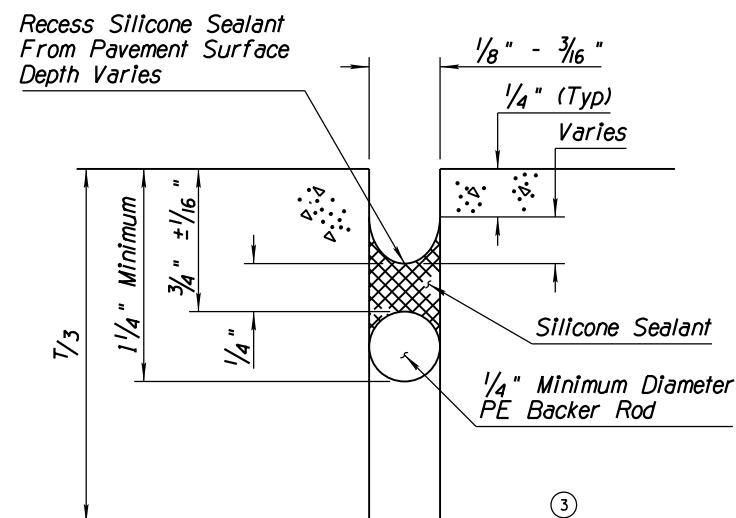
TRANSVERSE CONSTRUCTION JOINT
TC Joint
Non-Skewed & Skewed Joints



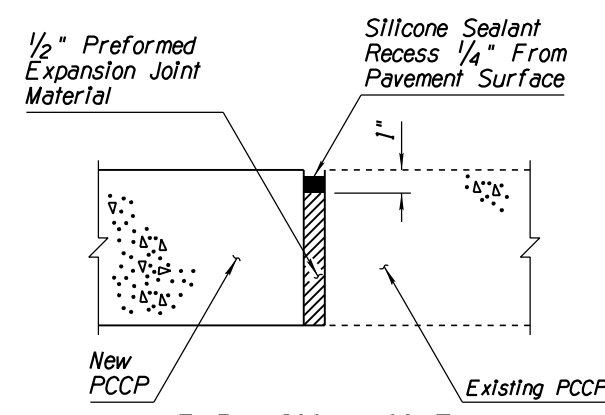
TRANSVERSE WEAKENED-PLANE JOINT
TWP Joint
W/O Load Transfer Dowel Assemblies



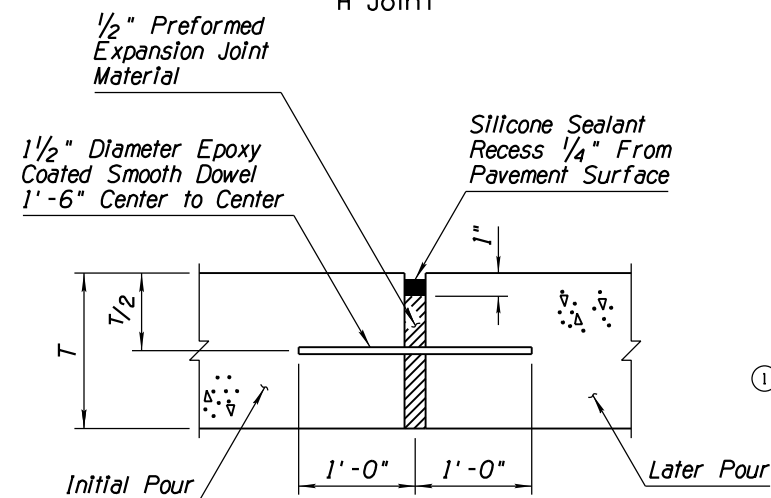
CONSTRUCTION JOINT
SAW AND SEAL DETAIL



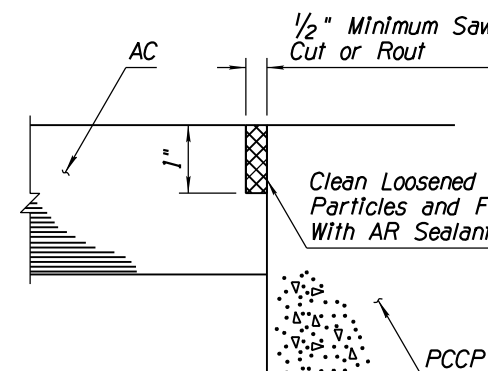
WEAKENED-PLANE JOINT
SAW AND SEAL DETAIL



EXPANSION JOINT
H Joint



EXPANSION JOINT
E Joint

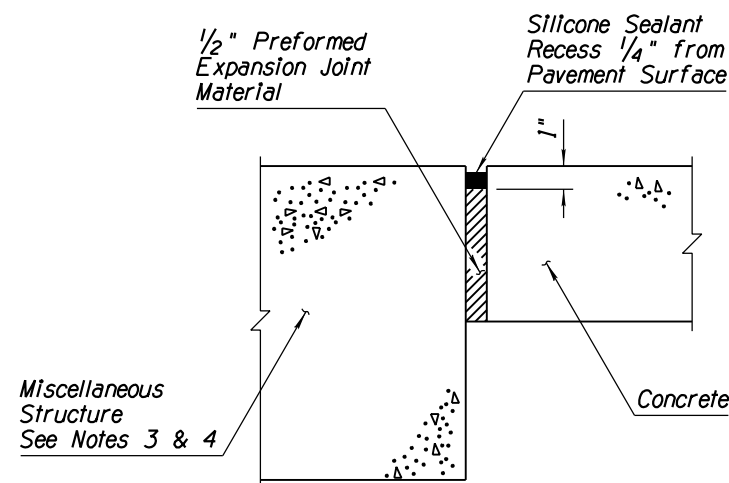


AC/PCCP EDGE-SEAL JOINT
S Joint
(Where Specified on Plans)

- GENERAL NOTES**
- When load transfer dowel assemblies are required, use dimensions shown in ()'s. See Assembly Placement And Edge Clearance Detail, Std Dwg C-07.02.
 - In slip form type pavement construction, LWP joints shall be used. In fixed form construction either LWP or LC joints may be used.
 - K joints shall be constructed around the complete perimeter of miscellaneous structures, or as directed by the Engineer.
 - Miscellaneous structures include, but are not limited to, catch basins, sign structure foundations, piers, abutments, barrier transitions, slotted drains and other concrete facilities, constructed within the right-of-way.

JOINT ABBREVIATIONS

- LWP - Longitudinal Weakened-Plane Joint
- TWP - Transverse Weakened-Plane Joint
- LC - Longitudinal Construction Joint
- TC - Transverse Construction Joint
- E, H, K - Expansion Joints
- S - AC/PCCP Edge-Seal Joint
- T - PCCP Thickness
- ① PE - Polyethylene



EXPANSION JOINT
K Joint (See Notes 3 & 4)

APPROVED FOR DESIGN 	STATE OF ARIZONA DEPARTMENT OF TRANSPORTATION ROADWAY STANDARD DRAWINGS	REV. 5/12
APPROVED FOR DISTRIBUTION 	PCCP JOINTS	DRAWING NO. C-07.01 Sheet 1 of 2