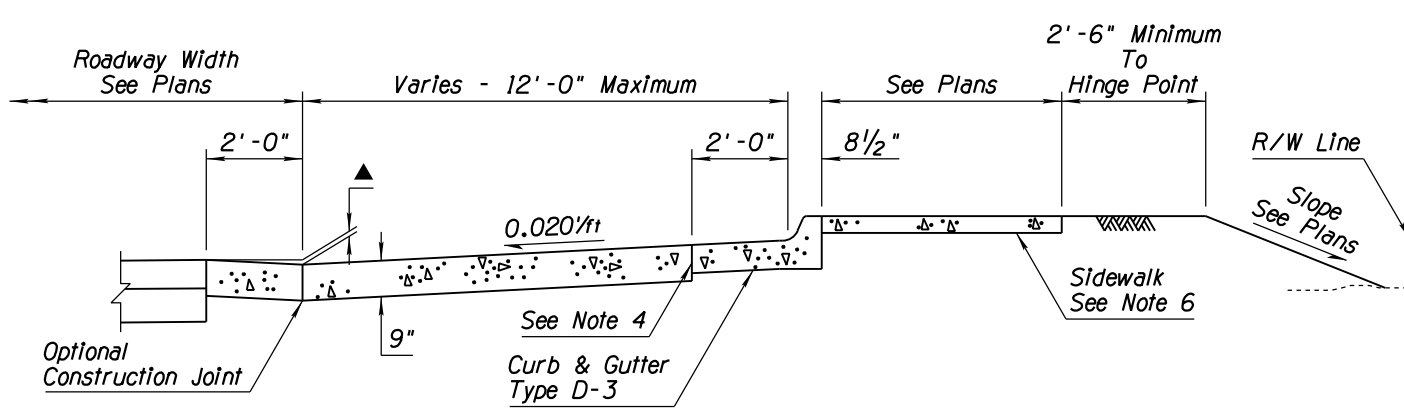
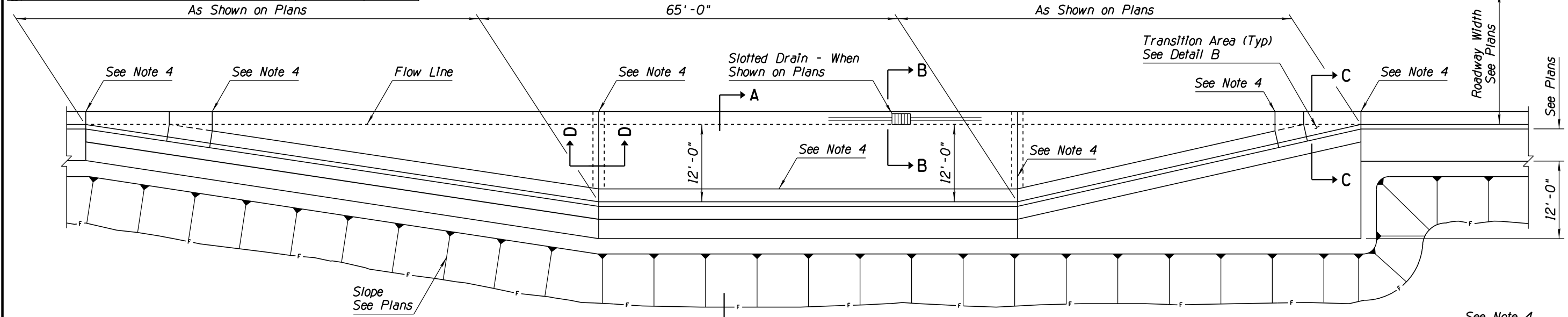
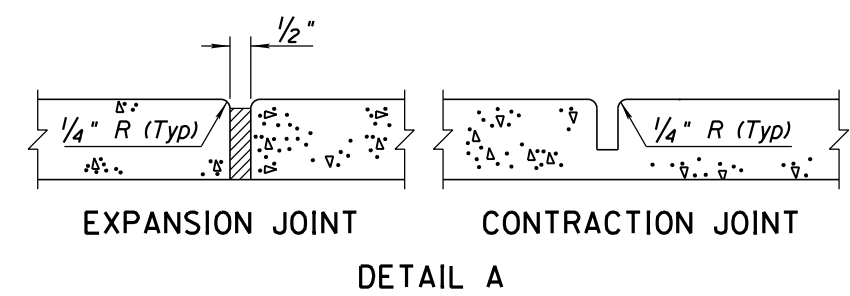


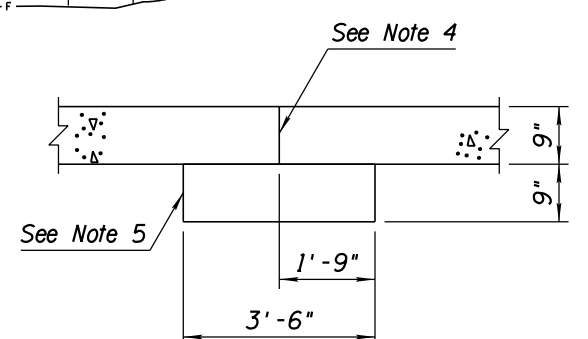
NO.	DESCRIPTION OF REVISIONS	MADE BY	DATE
1	REISSUED STANDARD DRAWING	RLF	5/07
2			
3			
4			



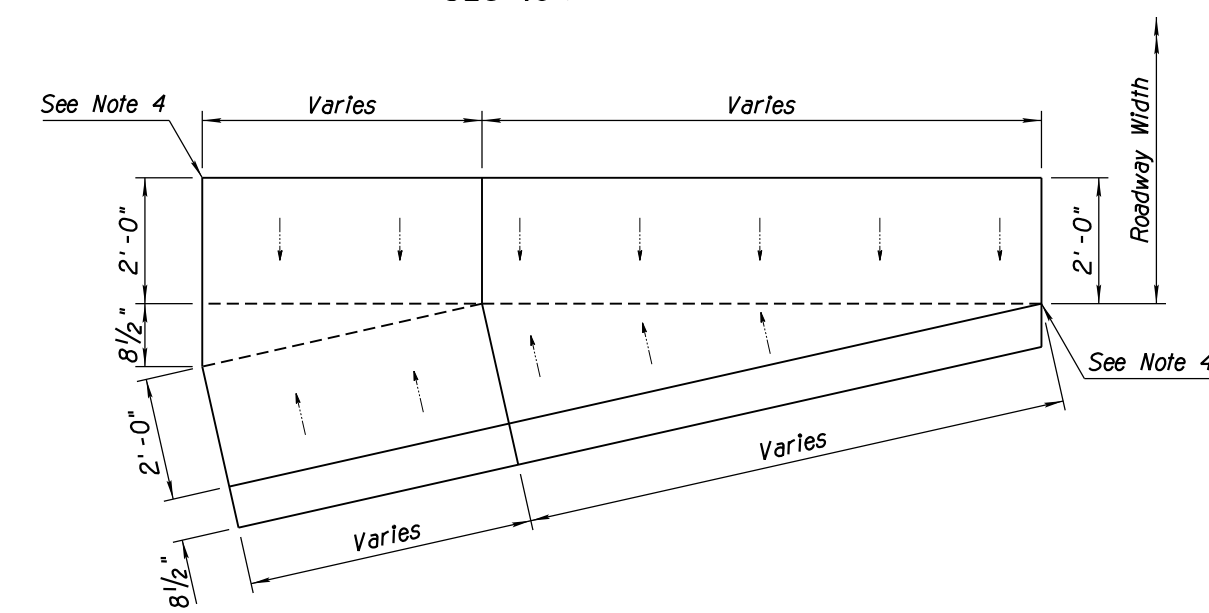
SECTION A-A



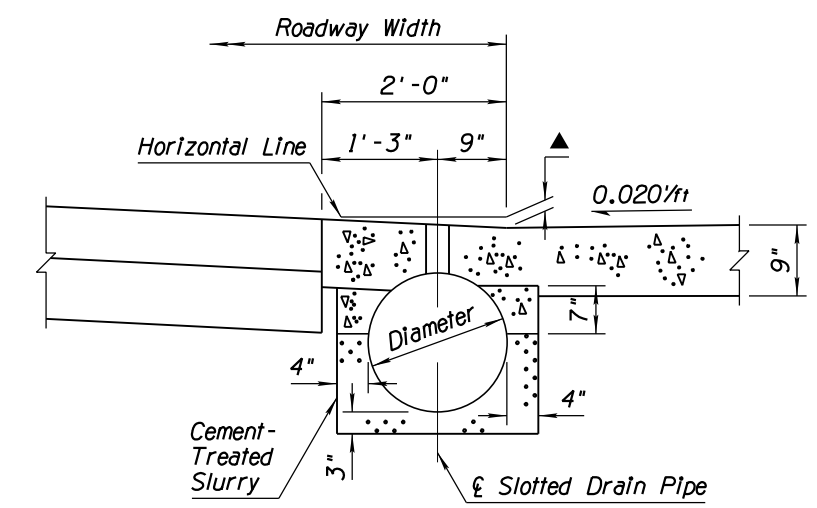
EXPANSION JOINT  
CONTRACTION JOINT  
DETAIL A



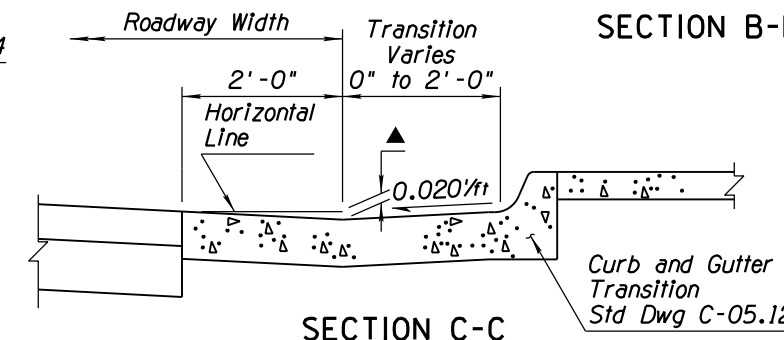
SECTION D-D



DETAIL B



SECTION B-B



SECTION C-C

GENERAL NOTES

1. The PCCP surfaces within the bus bay area shall be textured transversely. Surface texturing to conform to Std Spec 401.
  2. Transverse weakened-plane joints shall be constructed at a maximum spacing of 15' and shall align with joints in the concrete curb and gutter.
  3. For additional data on slotted drains, see Std Dwg C-13.60.
  4. For 1/2" expansion joint with preformed joint fillers, see Detail A.
  5. Concrete pad to be poured separately from concrete bus bay pavement.
  6. For sidewalk construction details, see Std Dwg C-05.20.
- ▲ See Plans: match the adjacent gutter depression

APPROVED FOR DESIGN 	STATE OF ARIZONA DEPARTMENT OF TRANSPORTATION ROADWAY STANDARD DRAWINGS	REV. ① 5/12
APPROVED FOR DISTRIBUTION 	CONCRETE BUS BAY	DRAWING NO. C-05.50