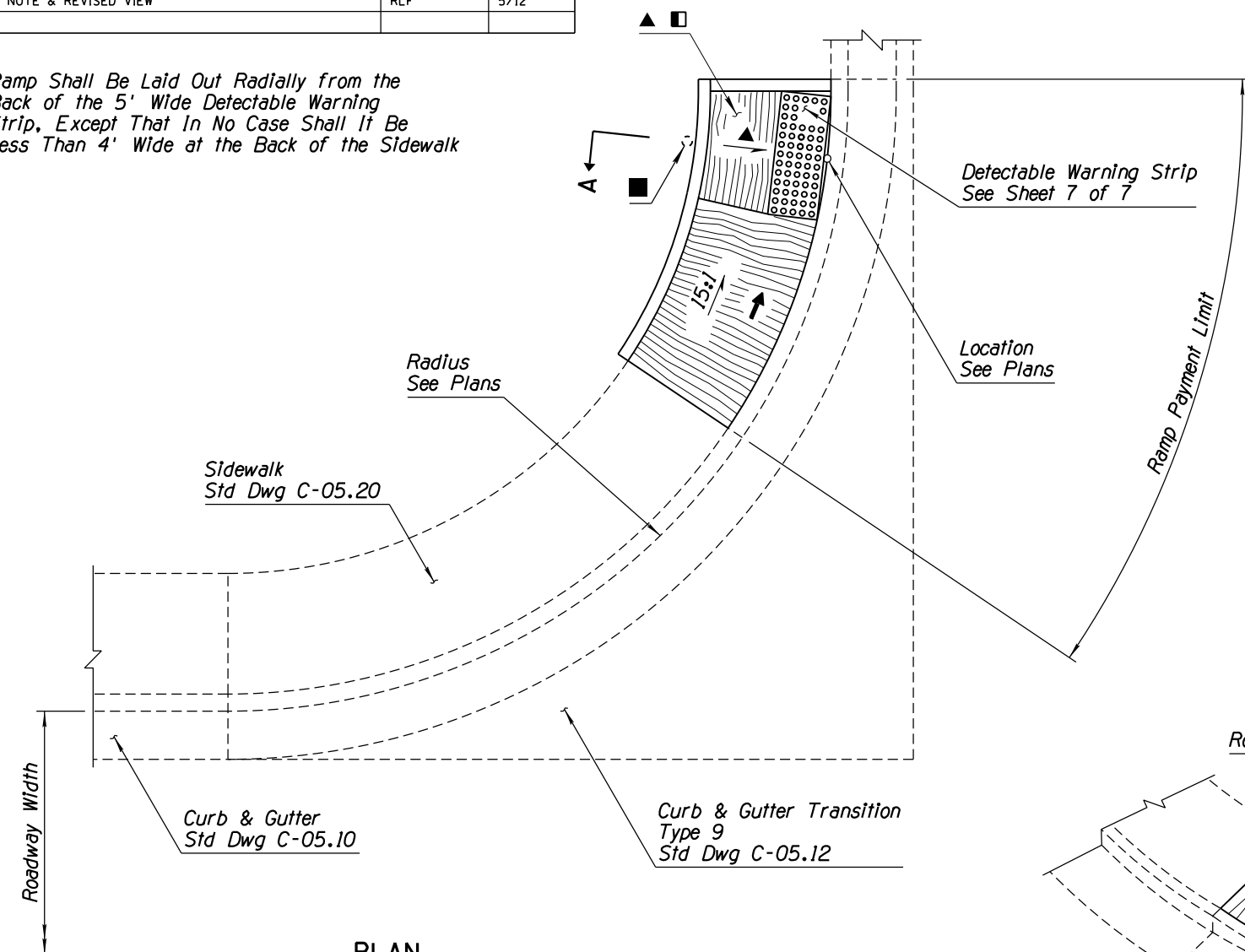
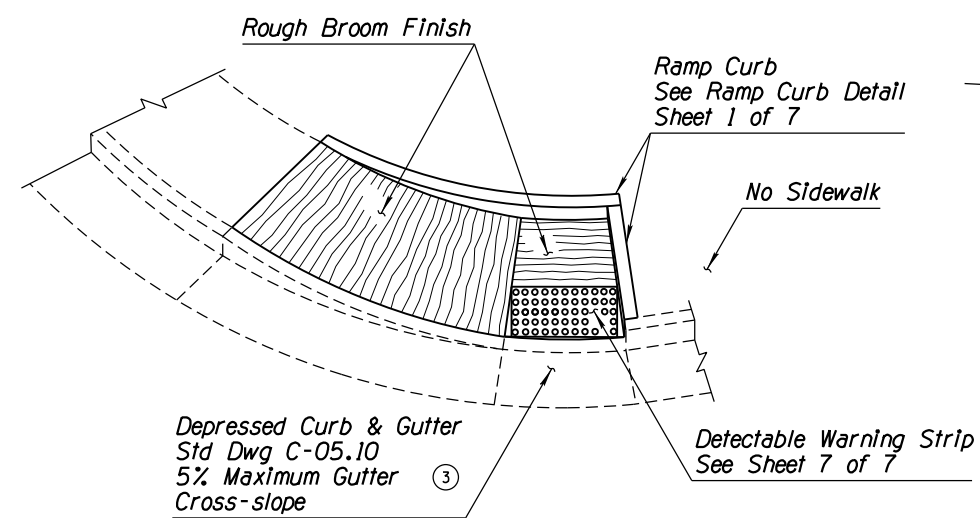


NO	DESCRIPTION OF REVISIONS	MADE BY	DATE
1	REVISED GENERAL NOTE 3: SLOPES & LENGTHS	RLF	11/06
2	DELETED GENERAL NOTE 8	RLF	5/07
3	ADDED NOTE & REVISED VIEW	RLF	5/12
4			

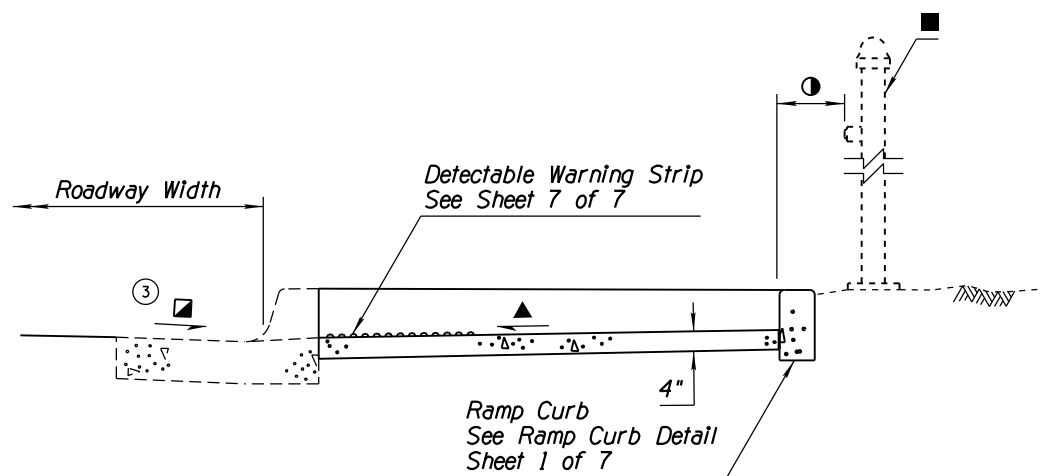
■ Ramp Shall Be Laid Out Radially from the Back of the 5' Wide Detectable Warning Strip, Except That In No Case Shall It Be Less Than 4' Wide at the Back of the Sidewalk



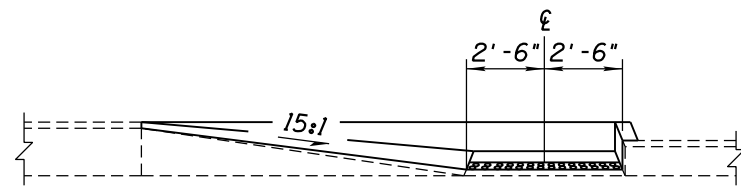
PLAN



PERSPECTIVE



SECTION A-A



ELEVATION
DEPRESSED CURB AT SIDEWALK RAMP

GENERAL NOTES

- For use where sidewalk is not continuous.
- Ramp centerline shall be radial from the face of the curb at the Sidewalk Ramp Control Point.
- For ramps 15-ft long or less, the 15:1 slope governs. If a 15:1 slope results in a ramp length longer than 15-ft, the 15:1 slope may be waived and the ramp length held at 15-ft, regardless of the slope.
- The top of the Ramp Curb along the back of the Sidewalk Ramp shall match the elevation of the adjacent back of sidewalk and run parallel to the Sidewalk Ramp. The Ramp Curb along the side of the Sidewalk Ramp shall match the elevation at the back of the Curb & Gutter and the back of Ramp Curb.
- Drainage inlets should not be located within the marked crosswalks, or if crosswalks aren't marked, within the area a standard marked crosswalk would enclose.
- Concrete shall receive a rough broom finish as shown.
- See Std Dwgs C-05.10 and C-05.20 for joint details.
- Pedestrian Push Button Pole When Shown on Traffic Plans. See Traffic Signal Plans for Additional Information
 - 10" Maximum to Face of Pedestrian Push Button

LEGEND

- ▲ Minimum Slope = 100:1 (0.01 %/ft)
- Maximum Slope = 50:1 (0.02 %/ft)
- ◼ Maximum Slope = 20:1 (0.05 %/ft)
- ③

SIDEWALK RAMP AT SIDEWALK TERMINUS

APPROVED FOR DESIGN 	STATE OF ARIZONA DEPARTMENT OF TRANSPORTATION ROADWAY STANDARD DRAWINGS	REV. 5/12
APPROVED FOR DISTRIBUTION 	SIDEWALK RAMP TYPE C	DRAWING NO. C-05.30 Sheet 3 of 7