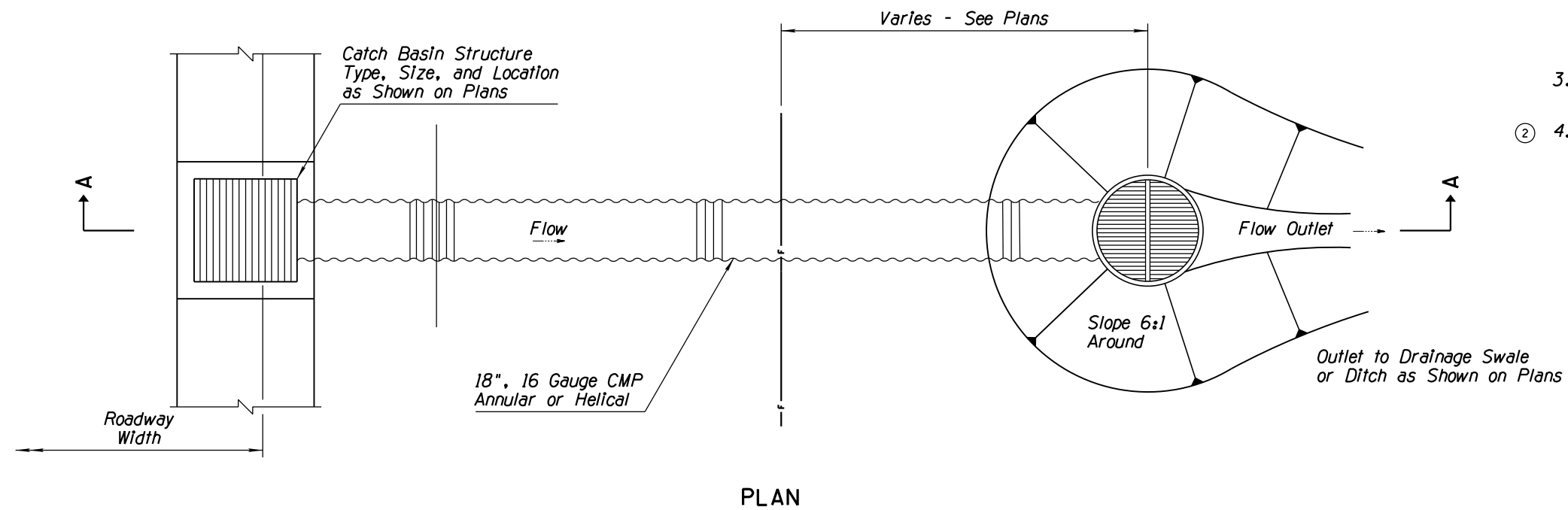


NO.	DESCRIPTION OF REVISIONS	MADE BY	DATE
1	REVISED PLAN & SECTION VIEW	RLF	9/04
2	ADDED NEW GENERAL NOTE	RLF	9/04
3			
4			

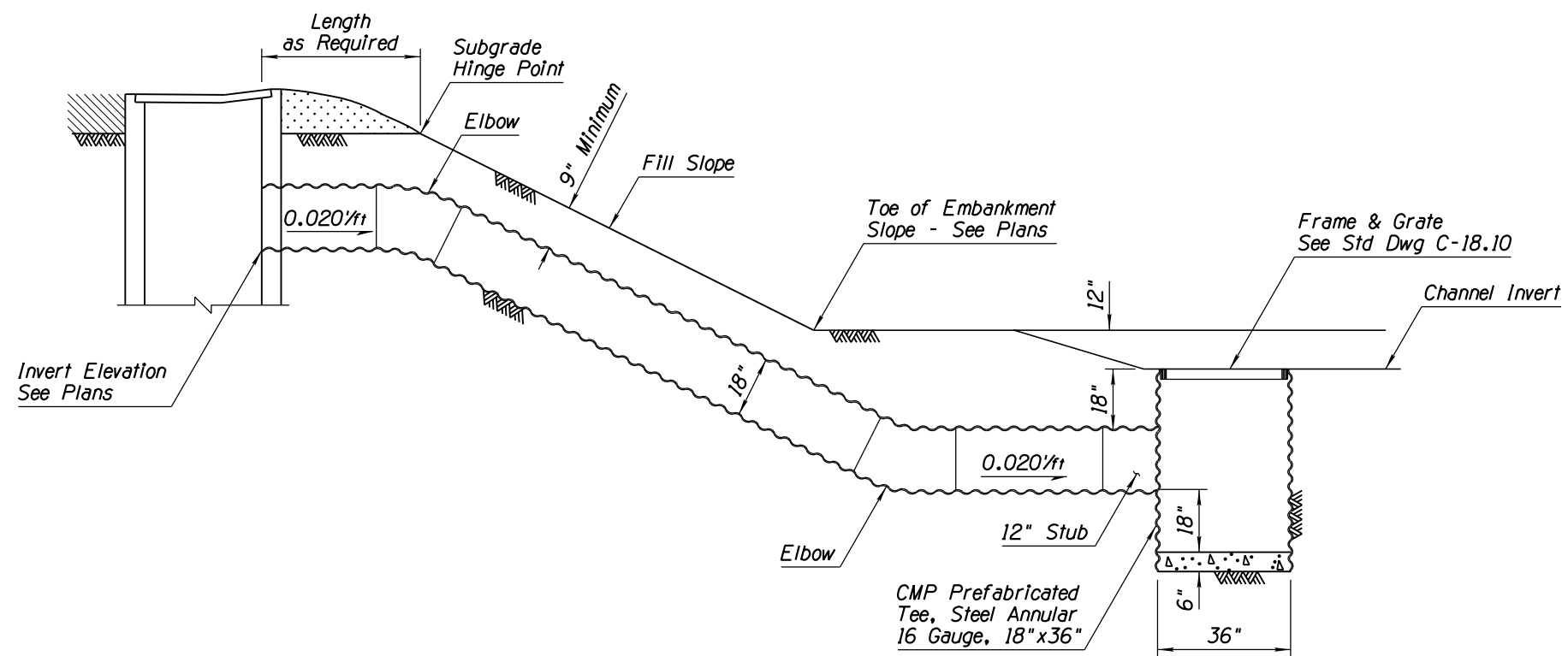
### GENERAL NOTES

1. Stub shall have annular corrugation. Downdrain piping beyond stub may be either annular or helical.
2. Couplings shall be mechanical heat-shrinkable polyolefin sheet; one piece lap-type neoprene sheet or slip seam; all 12" minimum width and 18 gauge minimum.
3. Maximum Q Allowable = 8 cfs  
Minimum V Allowable = 1 fps
- ② 4. Concrete shall be Class B.



PLAN

①



SECTION A-A

①

APPROVED FOR DESIGN 	STATE OF ARIZONA DEPARTMENT OF TRANSPORTATION ROADWAY STANDARD DRAWINGS	REV. 5/12
APPROVED FOR DISTRIBUTION 	DOWNDRAIN ENERGY DISSIPATOR	DRAWING NO. C-04.50