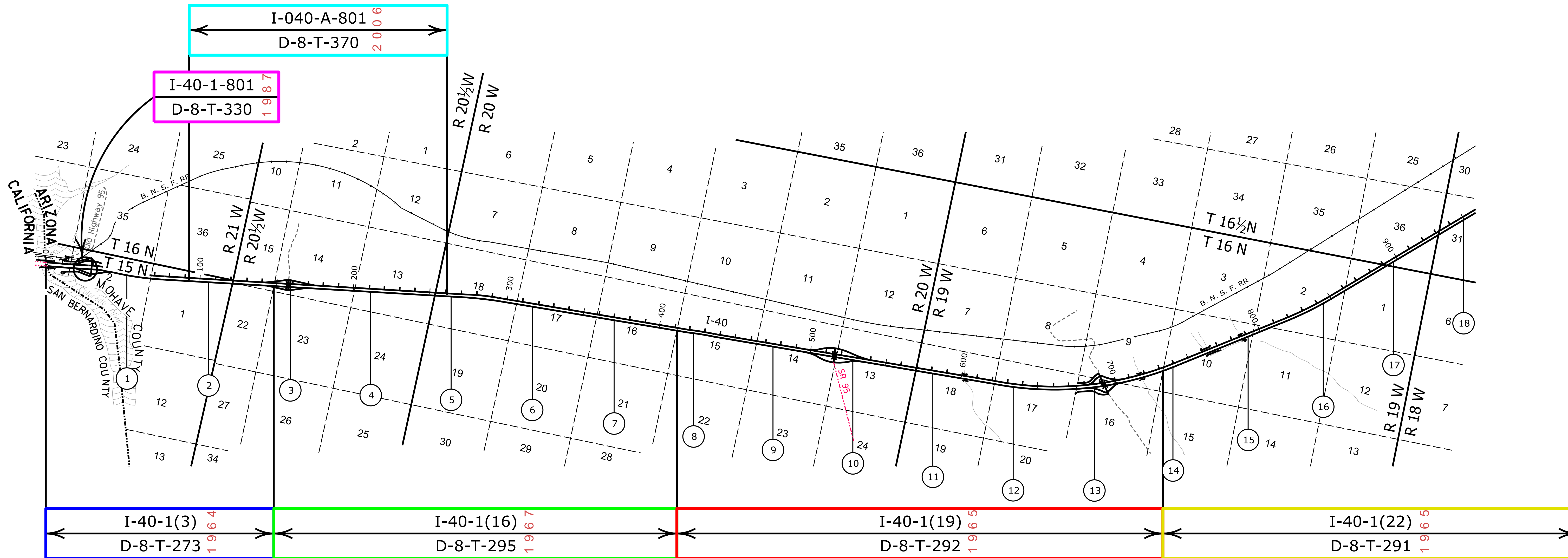
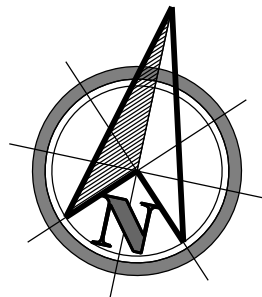


MOHAVE COUNTY



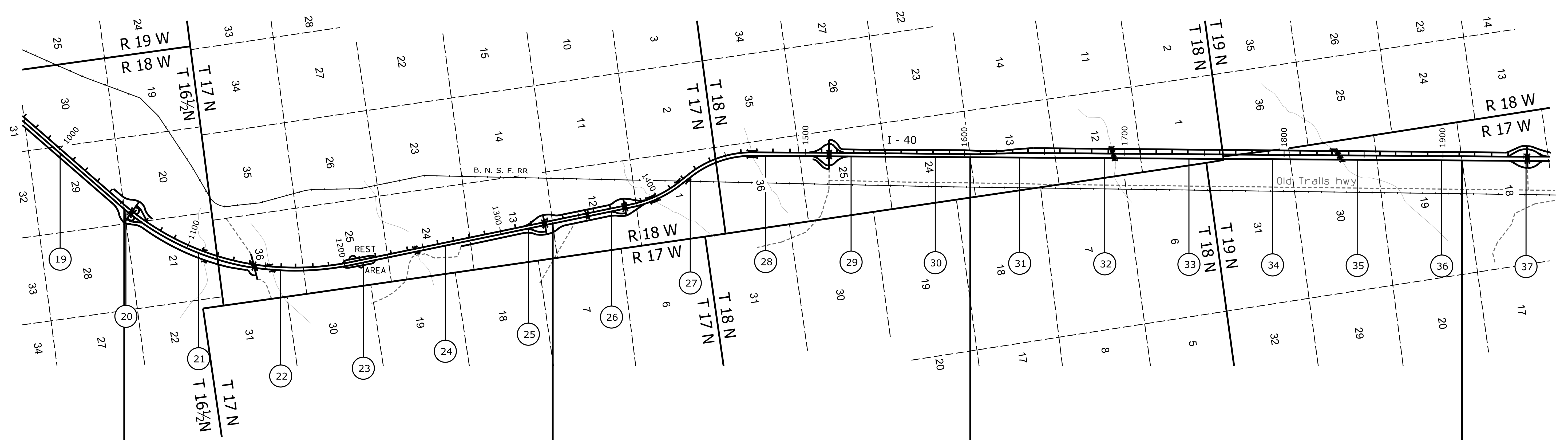
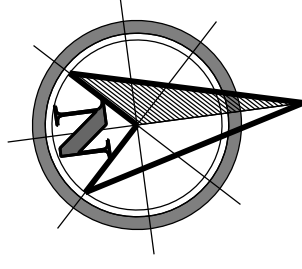
[Contact Us](#)

Click in colored box to view Plans/Maps
 (xx) Mile Post Number



Right Of Way Index Map	ROUTE I - 40	MILEPOST 0.00 - 18.00
HIGHWAY NAME Topock - Kingman Hwy.		

MOHAVE COUNTY



I-40-1(22) D-8-T-291	I-40-1(25) D-8-T-290	I-40-1(5) D-8-T-274	I-40-1(10) D-8-T-275	I-40-1(13) D-8-T-279
-------------------------	-------------------------	------------------------	-------------------------	-------------------------

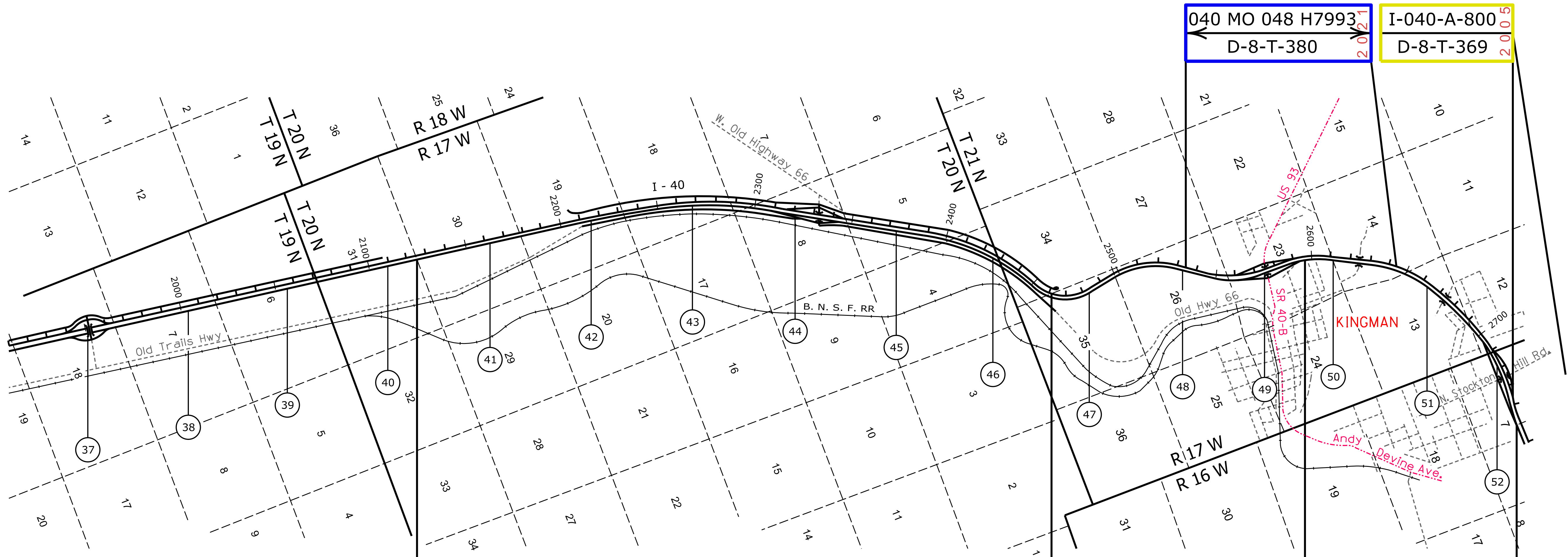
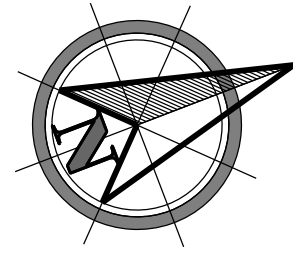
[Contact Us](#)

Click in colored box to view Plans/Maps
 (xx) Mile Post Number



Right Of Way Index Map	ROUTE I - 40	MILEPOST 19.00 - 37.00
HIGHWAY NAME Topock - Kingman Hwy.		

MOHAVE COUNTY



040 MO 048 H7993
D-8-T-380

I-040-A-800
D-8-T-369

I-40-1(13)
D-8-T-279

I-40-1(38)
D-8-T-302

I-40-1(29)
D-8-T-287

I-40-1(39)
D-8-T-301

040 MO 054 H7147
D-8-T-381

(Survey Only)

[Contact Us](#)

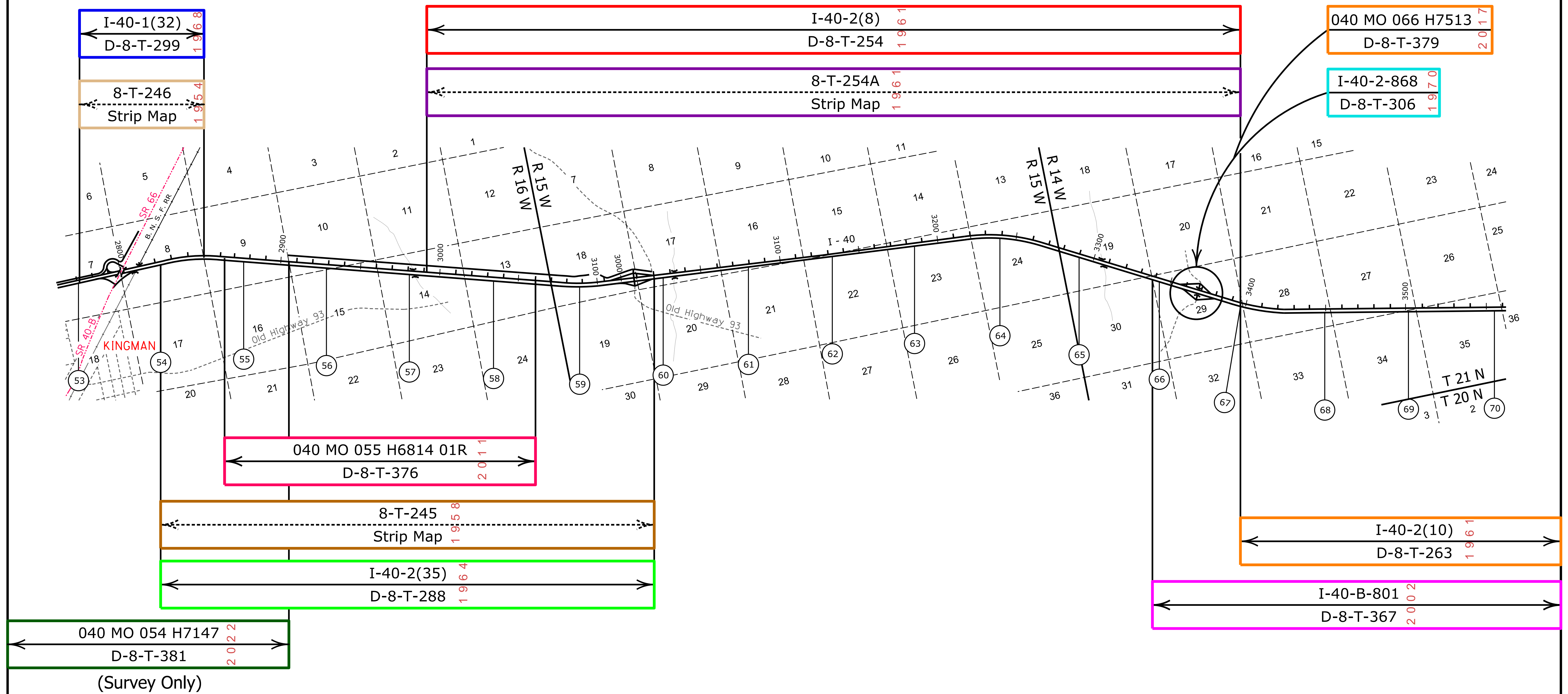
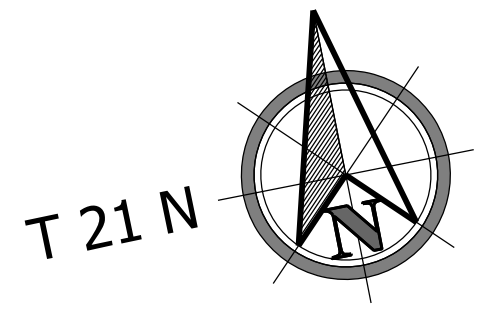
Click in colored box
to view Plans/Maps
⊙ Mile Post Number



Right Of Way Index Map	ROUTE I - 40	MILEPOST 37.00 - 52.00
HIGHWAY NAME Topock - Kingman Hwy.		

3

MOHAVE COUNTY



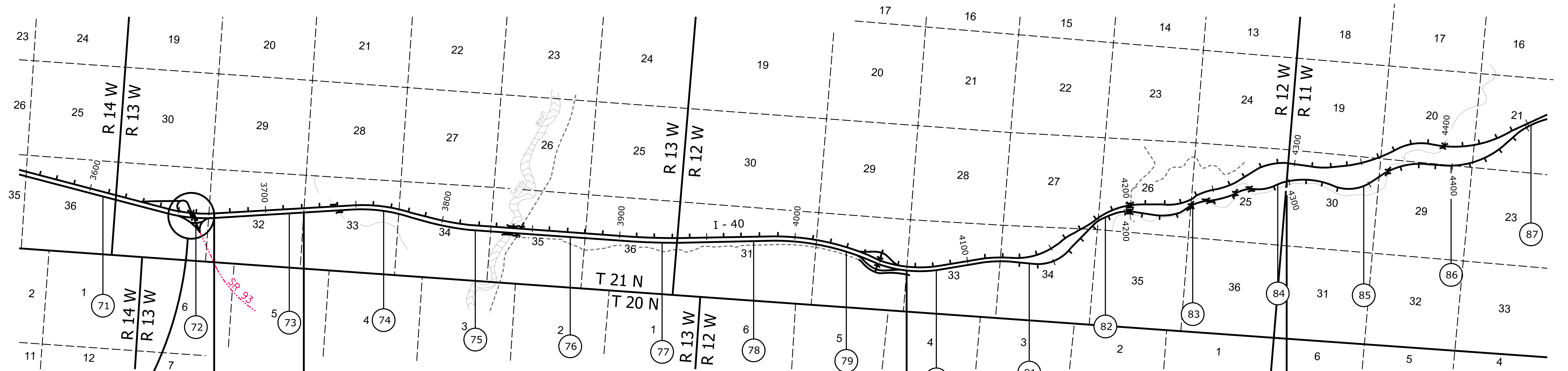
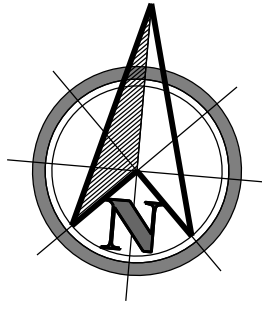
[Contact Us](#)

Click in colored box to view Plans/Maps
 (xx) Mile Post Number

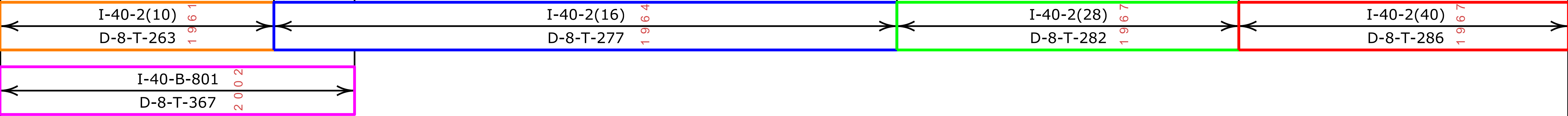


Right Of Way Index Map	ROUTE I - 40	MILEPOST 53.00 - 70.00
HIGHWAY NAME Kingman - Ash Fork Hwy.		

MOHAVE COUNTY



I-40-2(83)
D-8-T-313
1 9 7 6

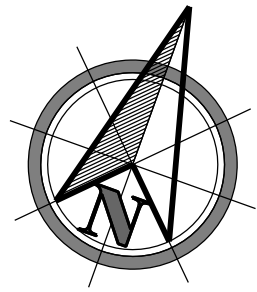


[Contact Us](#)

Click in colored box
to view Plans/Maps
⊗ Mile Post Number

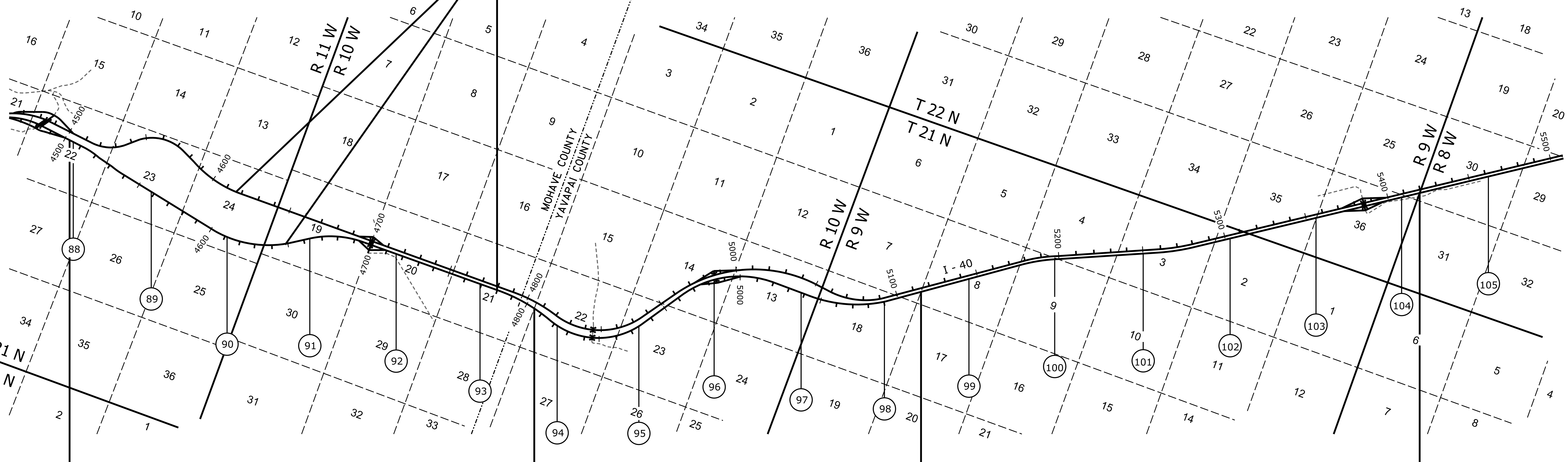


Right Of Way Index Map	ROUTE I - 40	MILEPOST 71.00 - 87.00
HIGHWAY NAME Kingman - Ash Fork Hwy.		



(Survey Only)

040 MO 090 H7957	2009
D-8-T-377	



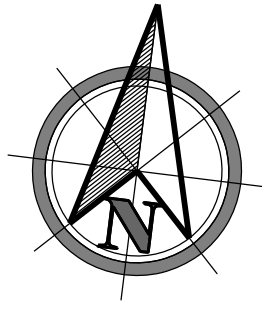
I-40-2(40) D-8-T-286	I-40-2(43) D-8-T-294	I-40-2(52) D-13-T-378	I-40-2(55) D-13-T-375	I-40-2(58) D-13-T-376
1 9 6 7	1 9 6 6	1 9 6 6	1 9 6 5	1 9 6 5

[Contact Us](#)

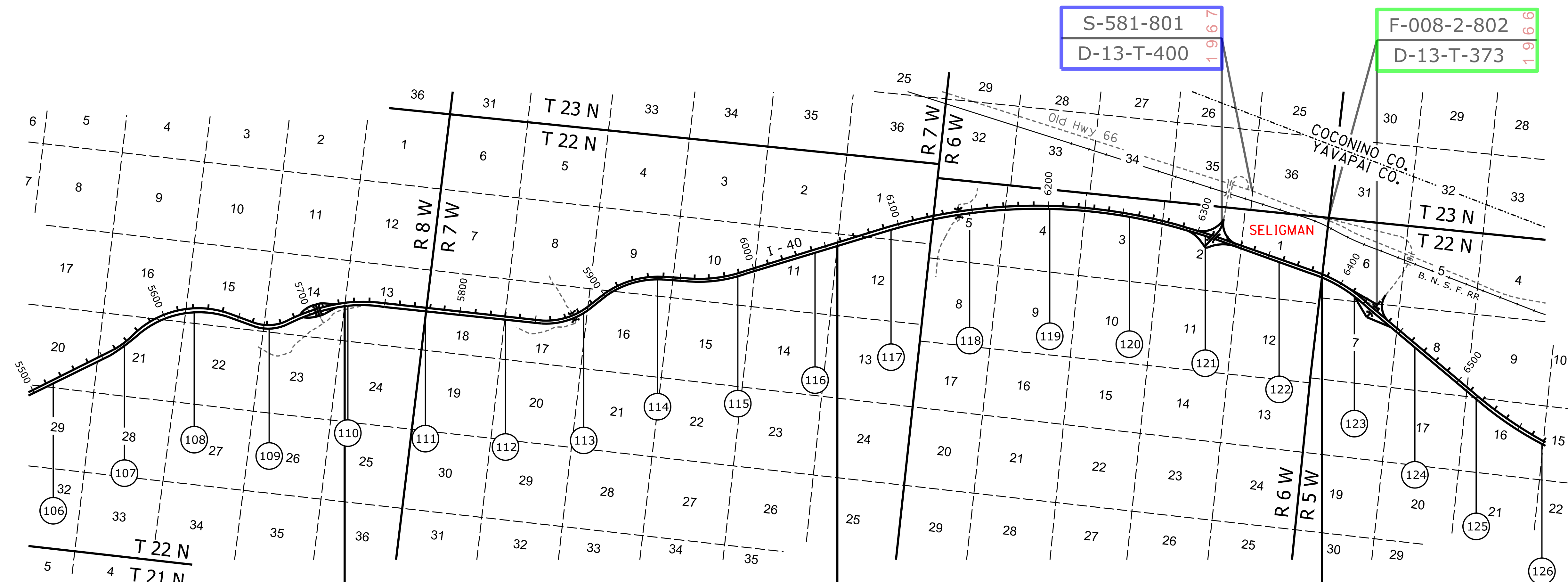
Click in colored box to view Plans/Maps
⊗ Mile Post Number



Right Of Way Index Map	ROUTE I - 40	MILEPOST 88.00 - 105.00
HIGHWAY NAME Kingman - Ash Fork Hwy.		



YAVAPAI COUNTY



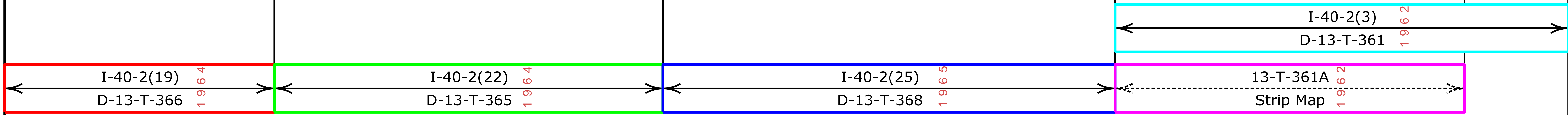
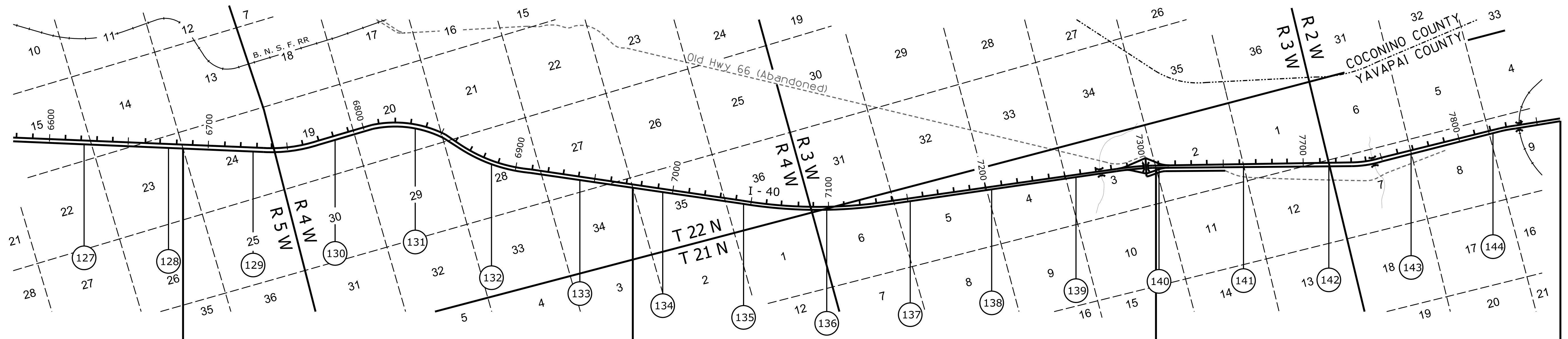
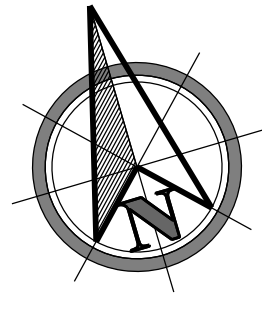
[Contact Us](#)

Click in colored box to view Plans/Maps
⊗ Mile Post Number



Right Of Way Index Map	ROUTE I - 40	MILEPOST 106.00 - 126.00
HIGHWAY NAME Kingman - Ash Fork Hwy.		

YAVAPAI COUNTY



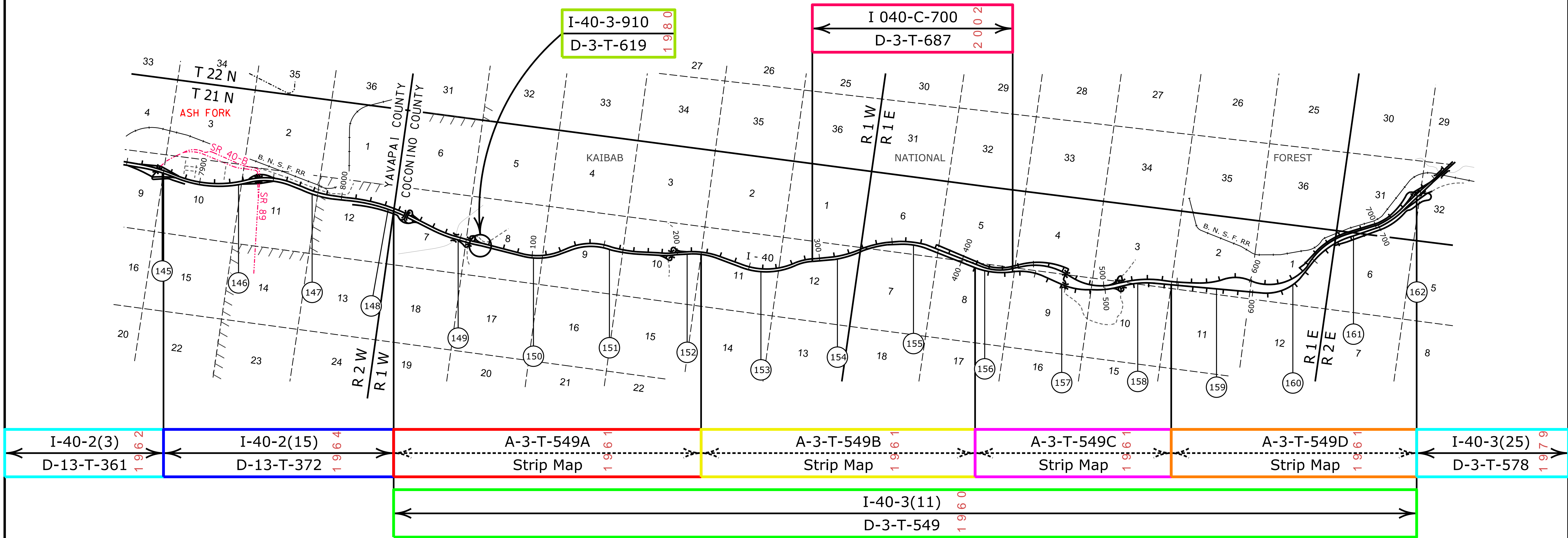
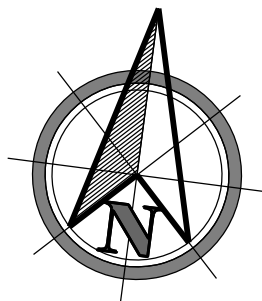
[Contact Us](#)

Click in colored box to view Plans/Maps
 (xx) Mile Post Number



Right Of Way Index Map	ROUTE I - 40	MILEPOST 127.00 - 144.00
HIGHWAY NAME Kingman - Ash Fork Hwy.		

COCONINO COUNTY



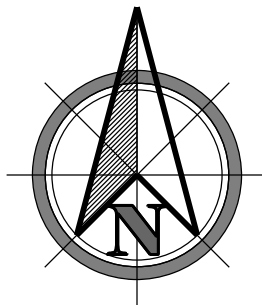
Contact Us

Click in colored box to view Plans/Maps
 (xx) Mile Post Number



Right Of Way Index Map	ROUTE I - 40	MILEPOST 145.00 - 162.00
HIGHWAY NAME Ash Fork - Flagstaff Hwy.		

COCONINO COUNTY



(Survey Only)

- F-042-3-701
- D-3-T-583 1971
- RS-584(2)
- D-3-T-644 1988
- S-584-601
- D-3-T-618 1980

064 CN 185 H7142

D-3-T-694 2008

3-T-541(A)

Strip Map 1959

I-40-3(25) 1974

D-3-T-578

I-40-3(33) 1978

D-3-T-593

I-40-3(10) 1961

D-3-T-541B

3-T-547A 1961

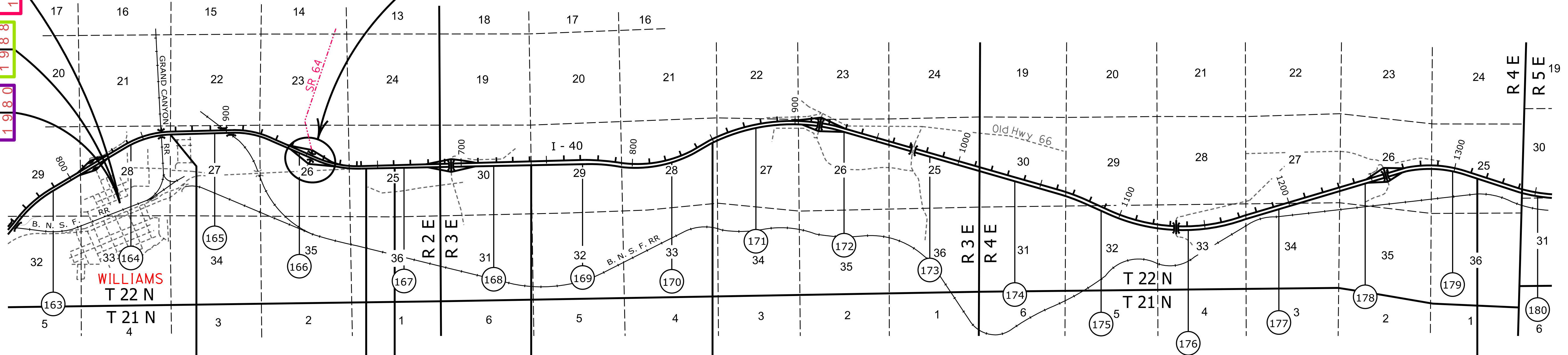
Strip Map

A-3-T-541 1959

Strip Map

I-40-3(14) 1969

D-3-T-547



[Contact Us](#)

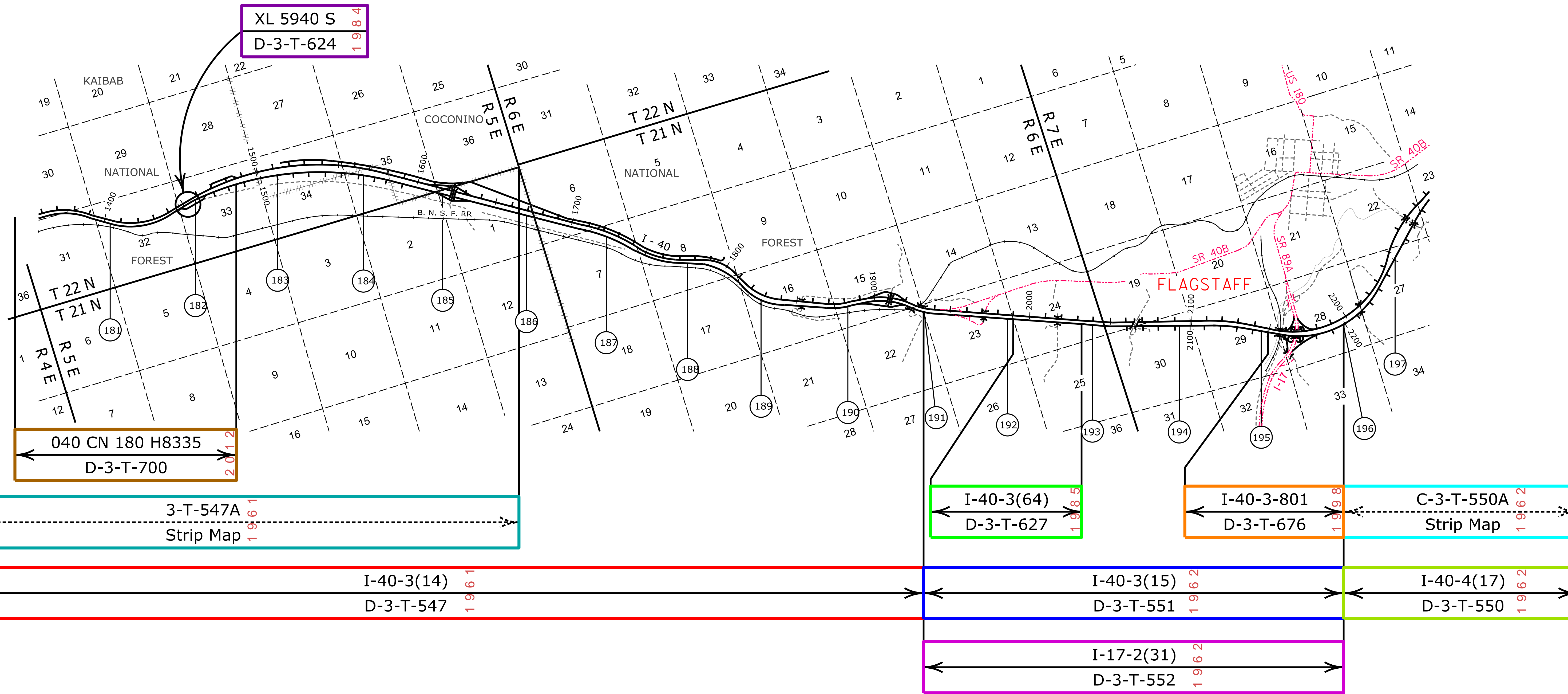
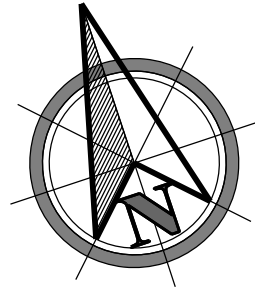
Click in colored box
to view Plans/Maps
ⓧ Mile Post Number



Right Of Way Index Map	ROUTE I - 40	MILEPOST 163.00 - 180.00
HIGHWAY NAME Ash Fork - Flagstaff Hwy.		

10

COCONINO COUNTY

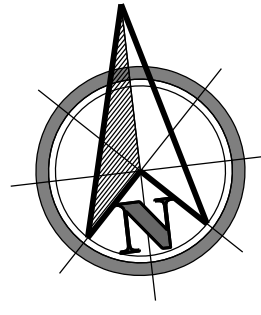


Click in colored box to view Plans/Maps
 (xx) Mile Post Number

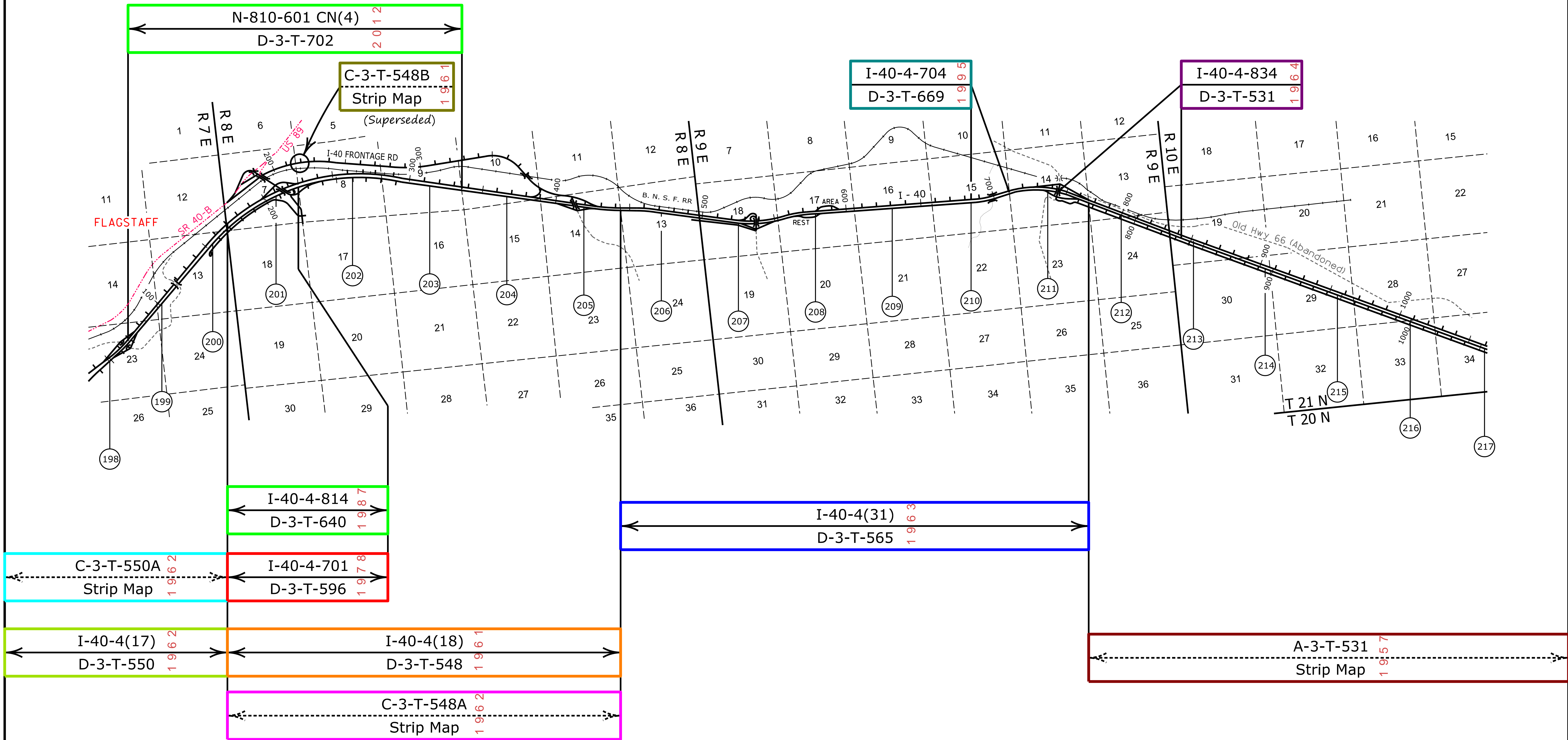


Right Of Way Index Map	ROUTE I - 40	MILEPOST 181.00 - 197.00
HIGHWAY NAME Ash Fork - Flagstaff Hwy.		

COCONINO COUNTY



(Survey Only)



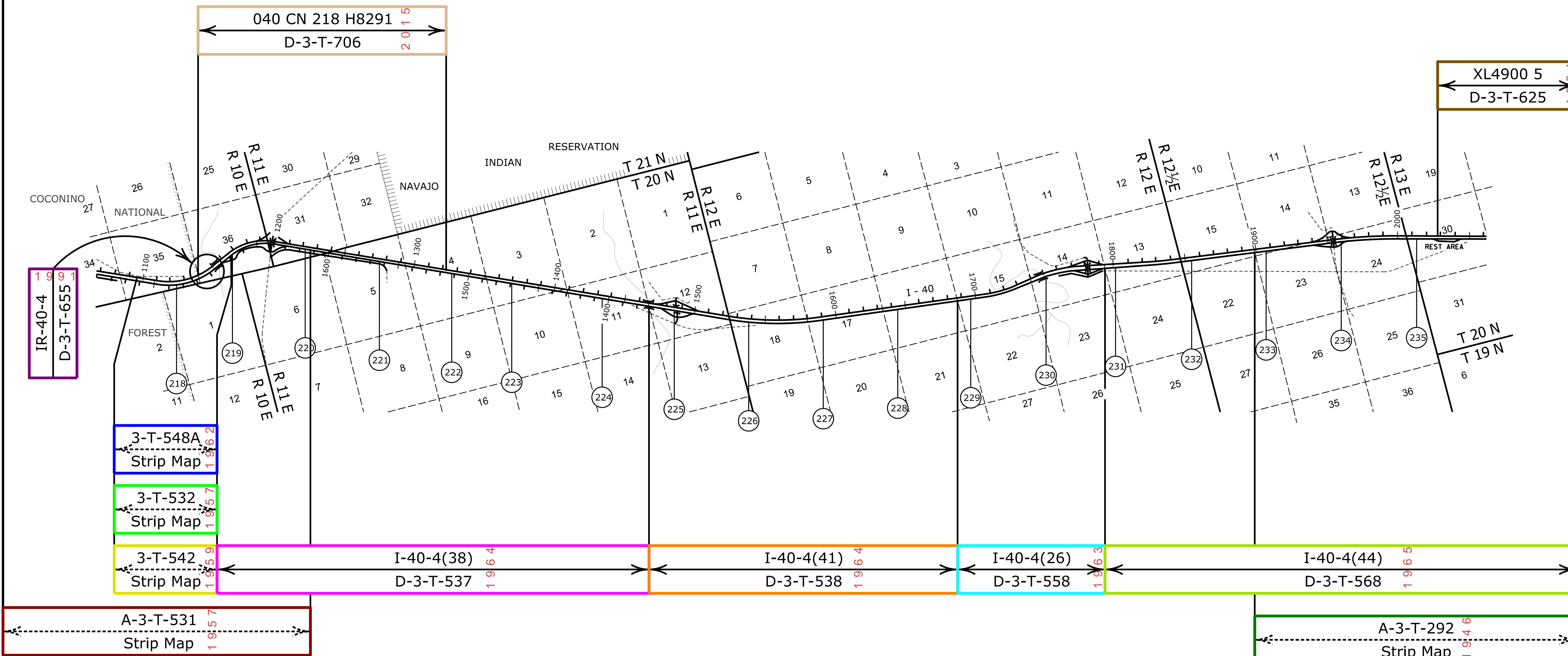
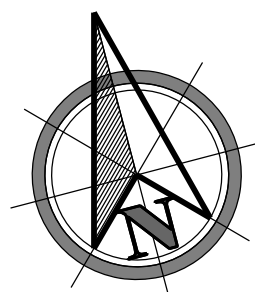
[Contact Us](#)

Click in colored box to view Plans/Maps
 (XX) Mile Post Number



Right Of Way Index Map	ROUTE I - 40	MILEPOST 198.00 - 217.00
HIGHWAY NAME Flagstaff - Holbrook Hwy.		

COCONINO COUNTY



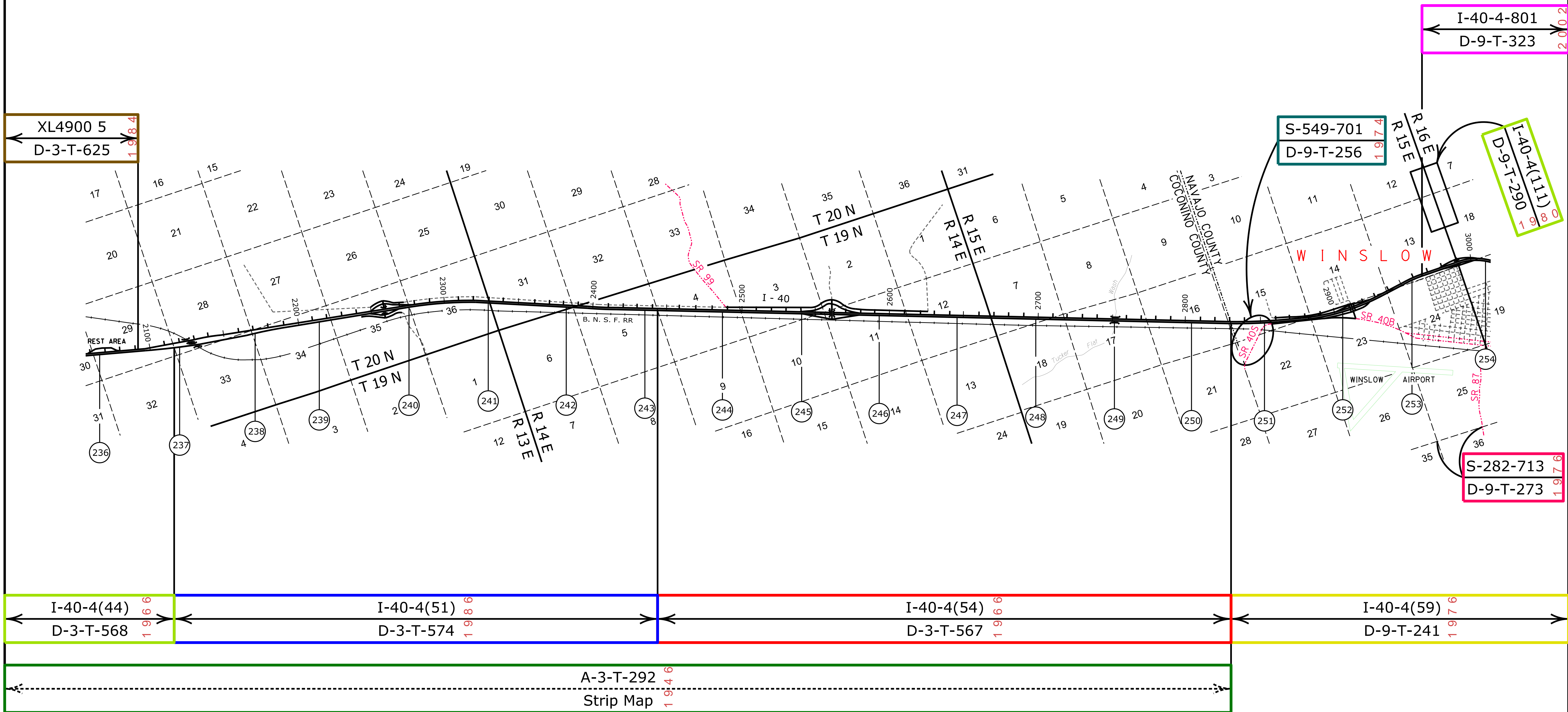
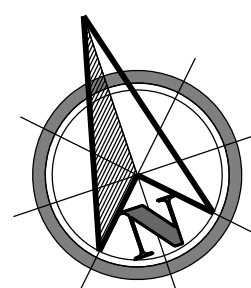
[Contact Us](#)

Click in colored box to view Plans/Maps
 (xx) Mile Post Number



Right Of Way Index Map	ROUTE I - 40	MILEPOST 218.00 - 235.00
HIGHWAY NAME Flagstaff - Holbrook Hwy.		

COCONINO COUNTY



[Contact Us](#)

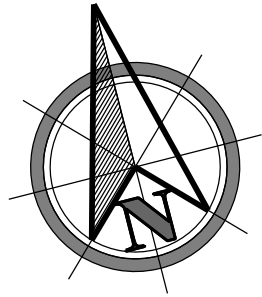
Click in colored box to view Plans/Maps

(xx) Mile Post Number

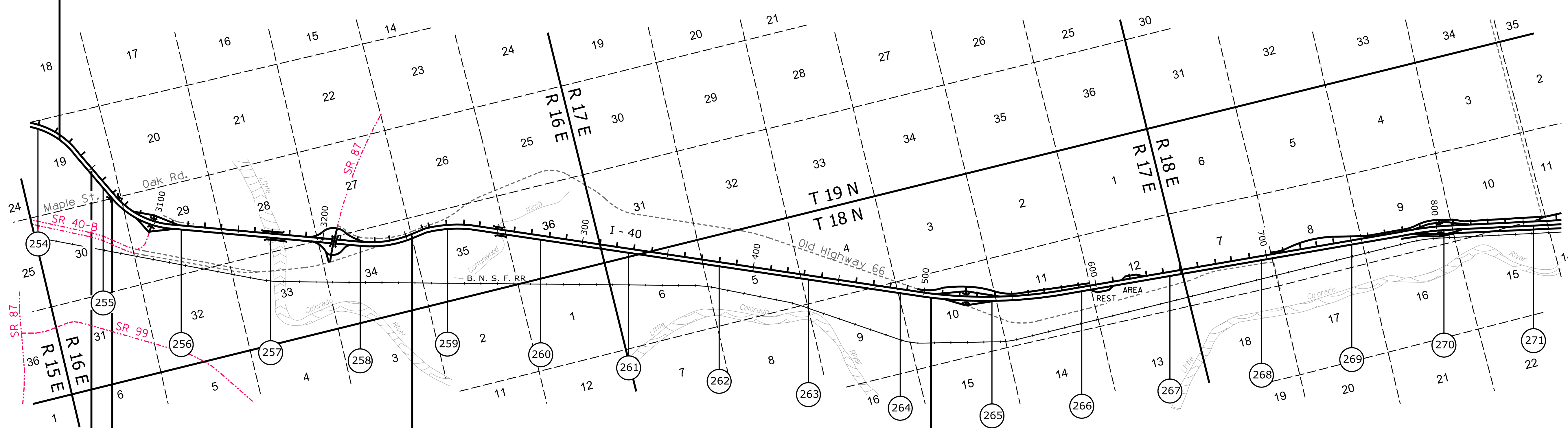


Right Of Way Index Map	ROUTE I - 40	MILEPOST 236.00 - 254.00
HIGHWAY NAME Flagstaff - Holbrook Hwy.		

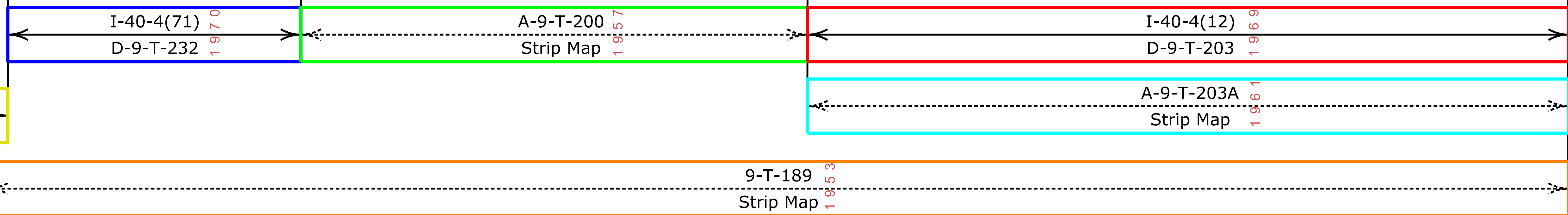
NAVAJO COUNTY



I-40-4-801
D-9-T-323 2002



I-40-4(59)
D-9-T-241 1968



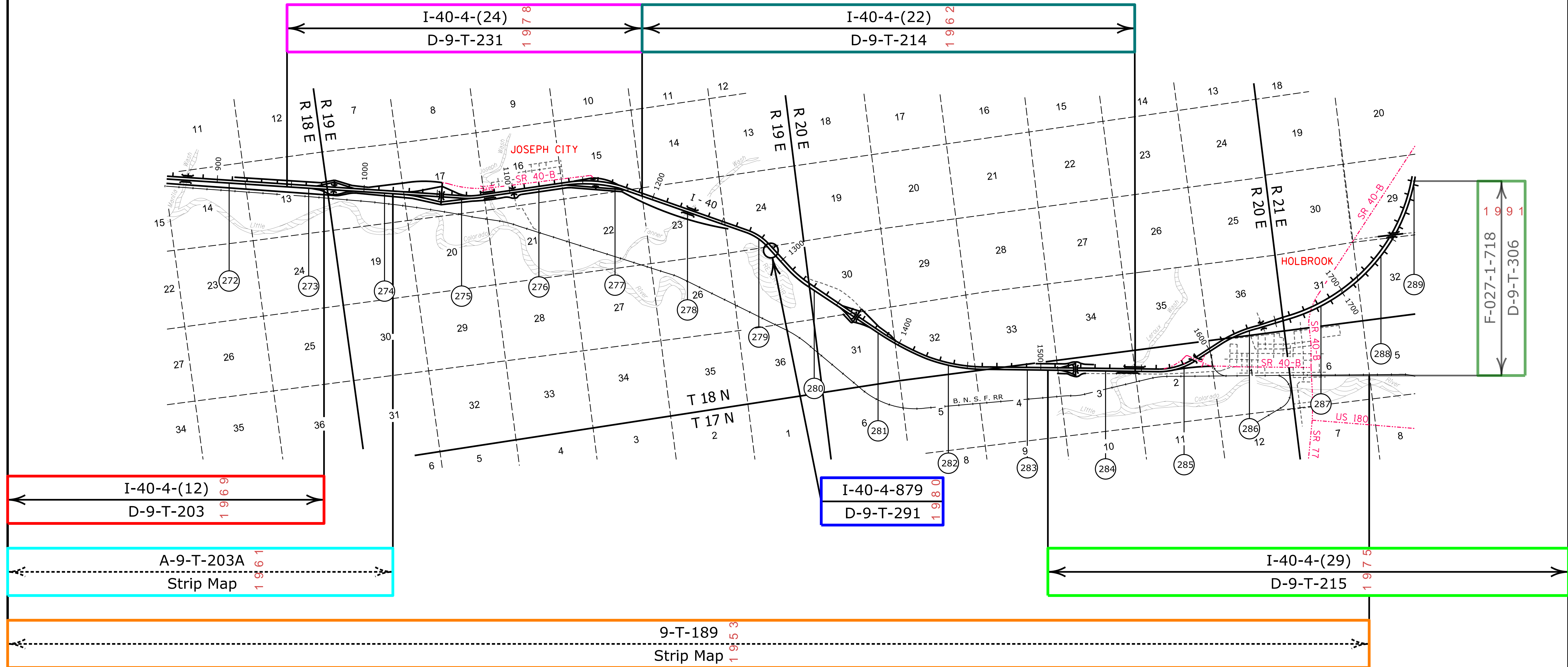
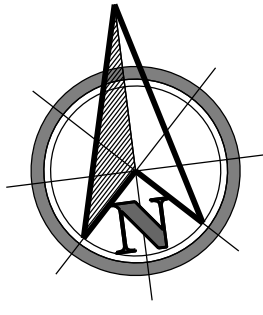
Contact Us

Click in colored box to view Plans/Maps
⊗ Mile Post Number



Right Of Way Index Map	ROUTE I - 40	MILEPOST 254.00 - 271.00
HIGHWAY NAME Flagstaff - Holbrook Hwy.		

NAVAJO COUNTY

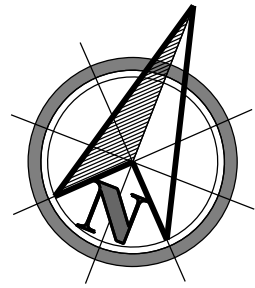


[Contact Us](#)

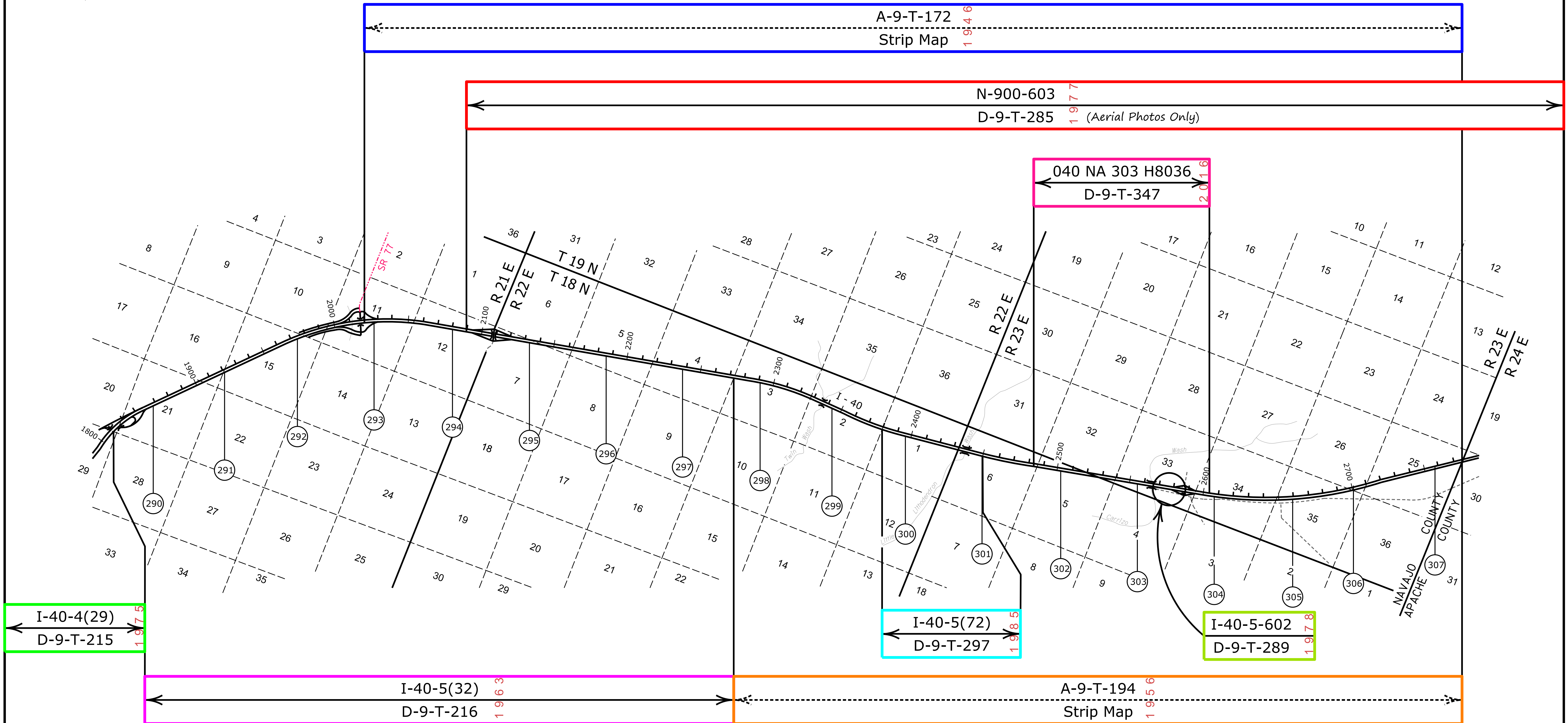
Click in colored box to view Plans/Maps
 (xx) Mile Post Number



Right Of Way Index Map	ROUTE I - 40	MILEPOST 272.00 - 289.00
HIGHWAY NAME Flagstaff - Holbrook Hwy.		



NAVAJO COUNTY



[Contact Us](#)

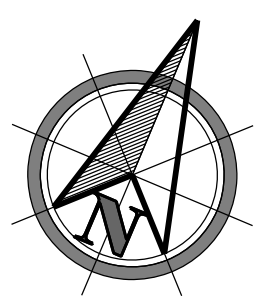
Click in colored box to view Plans/Maps

(xx) Mile Post Number



Right Of Way Index Map	ROUTE I - 40	MILEPOST 290.00 - 307.00
HIGHWAY NAME Holbrook - Lupton Hwy.		

APACHE COUNTY



N-900-603
D-9-T-285
1977
(Aerial Photos Only)

I-40-5-879
D-1-T-269
1988

I-40-5-491
D-1-T-275
1992

I-40-5-701
Parcel no. 1-172
1971
(deleted)

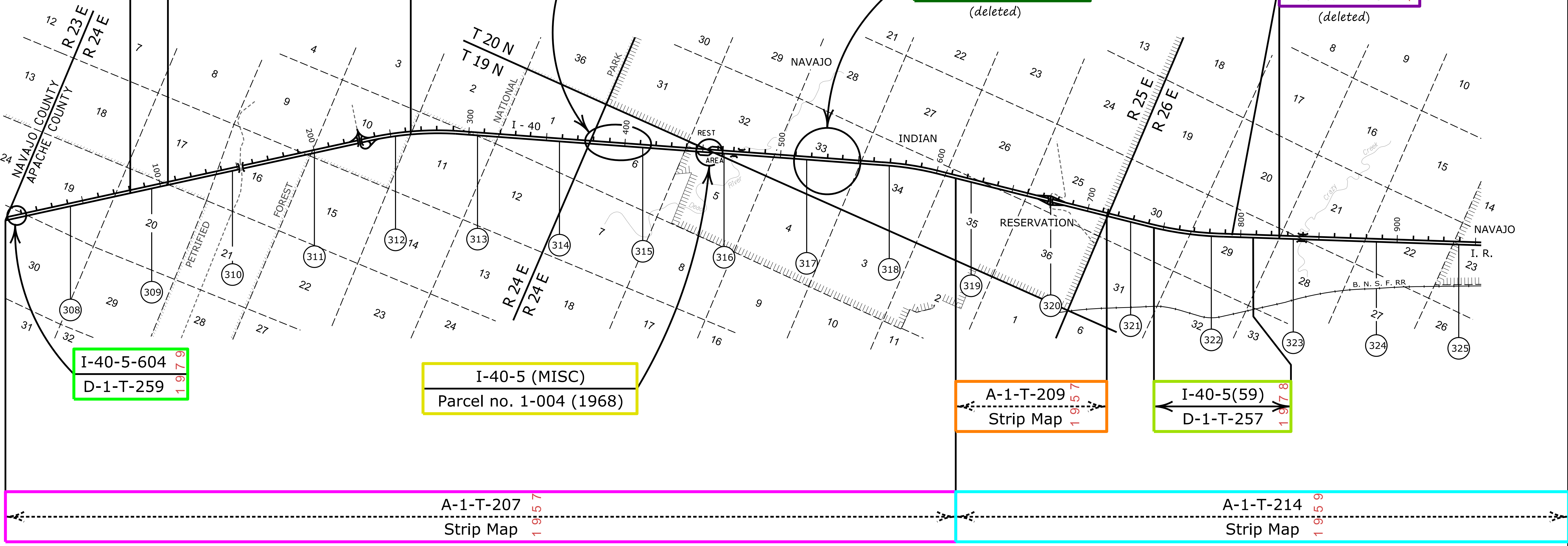
I-40-5-601
Parcel 1-182
1973
(deleted)

I-40-5-604
D-1-T-259
1979

I-40-5 (MISC)
Parcel no. 1-004 (1968)

A-1-T-209
Strip Map
1957

I-40-5(59)
D-1-T-257
1978



A-1-T-207
Strip Map
1957

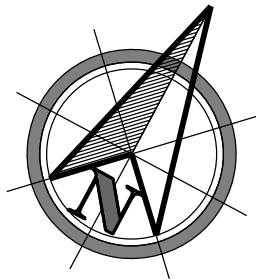
A-1-T-214
Strip Map
1959

Contact Us

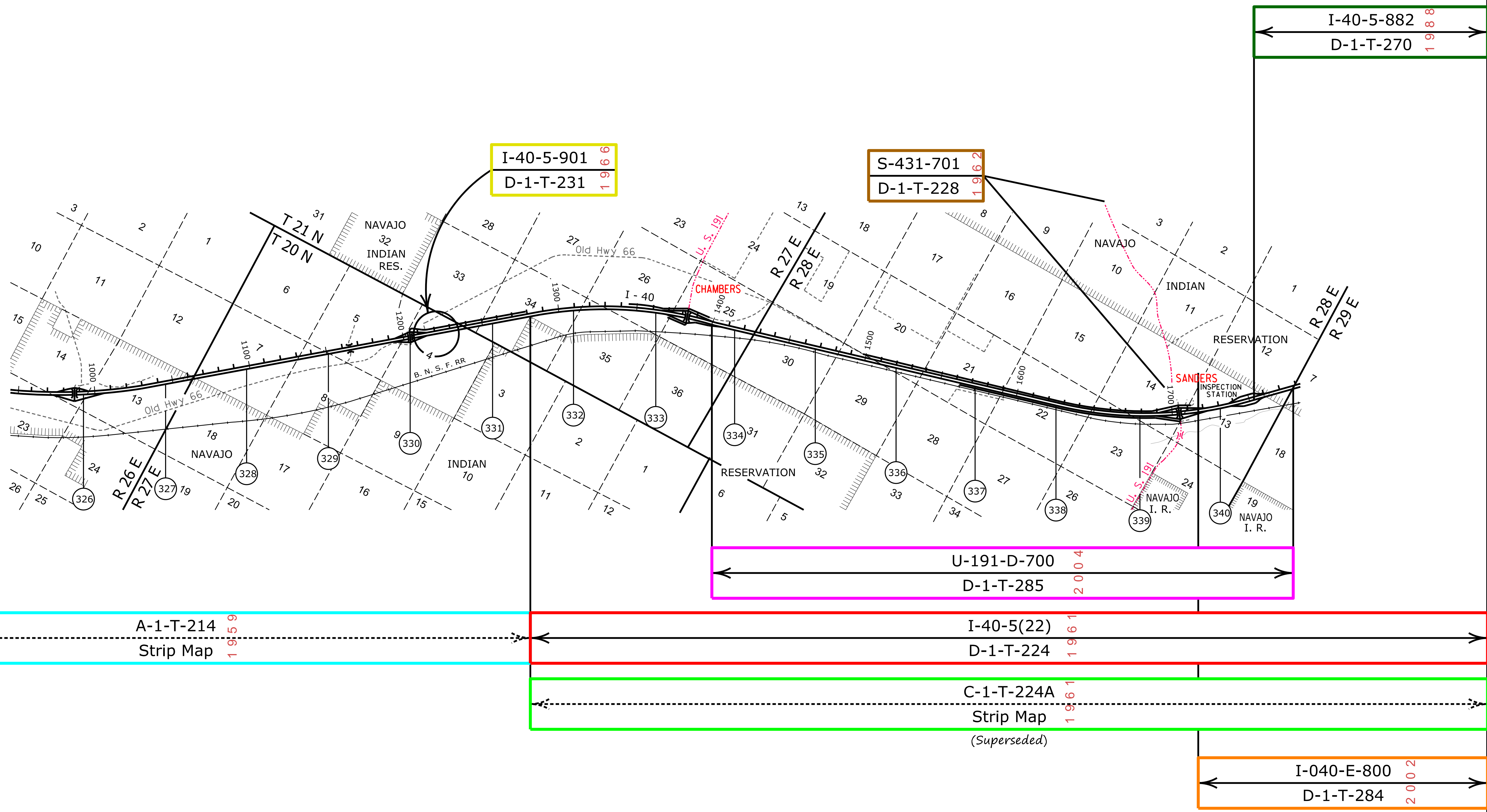
Click in colored box to view Plans/Maps
⊗ Mile Post Number



Right Of Way Index Map	ROUTE I - 40	MILEPOST 308.00 - 325.00
HIGHWAY NAME		Holbrook - Lupton Hwy.



APACHE COUNTY



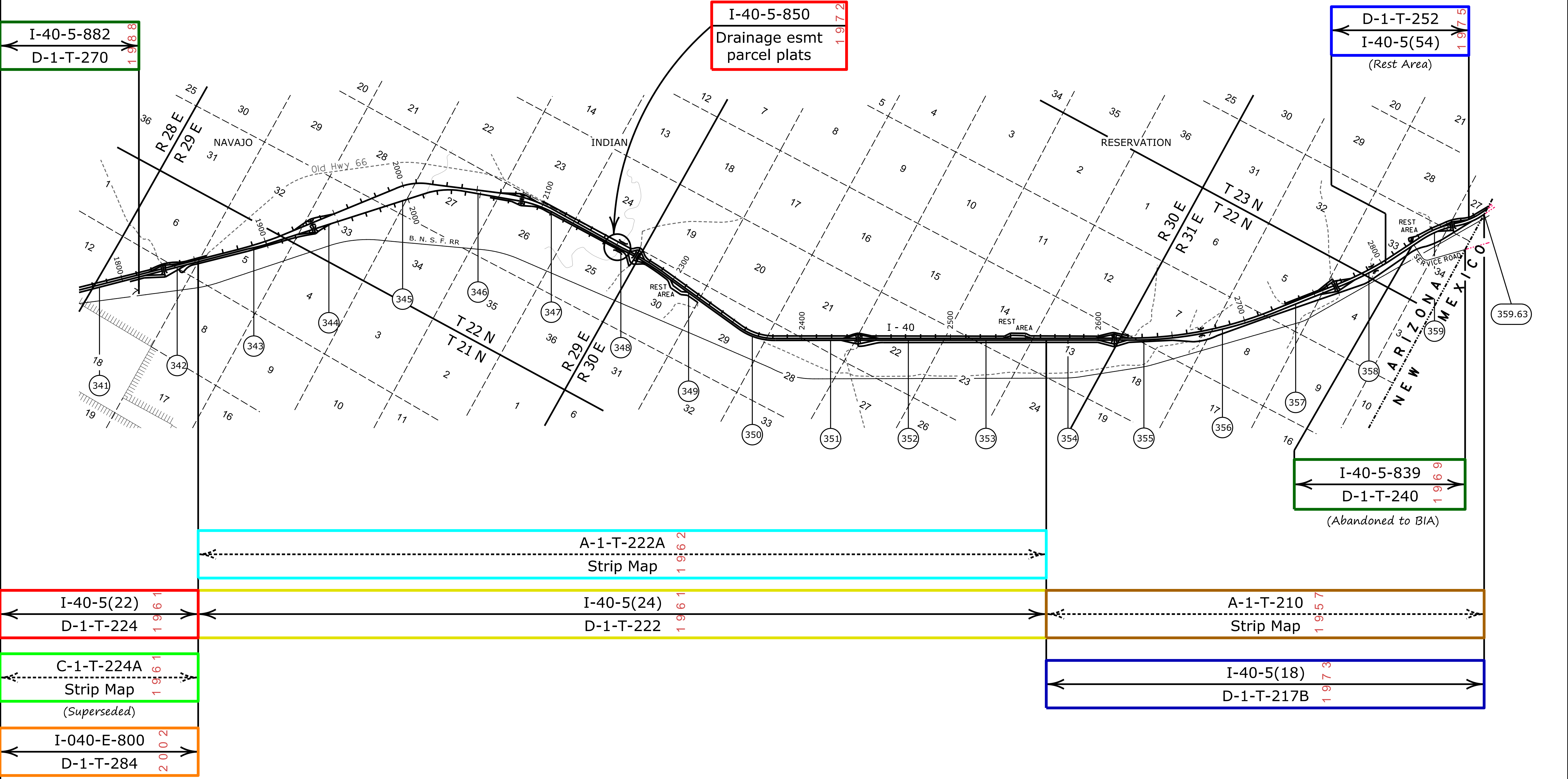
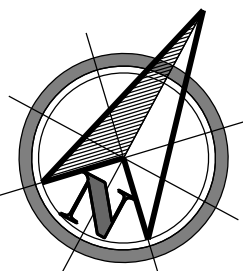
[Contact Us](#)

Click in colored box to view Plans/Maps
ⓧ Mile Post Number



Right Of Way Index Map	ROUTE I - 40	MILEPOST 326.00 - 340.00
HIGHWAY NAME		Holbrook - Lupton Hwy.

APACHE COUNTY



I-40-5(22)
D-1-T-224
1 9 6 1

C-1-T-224A
Strip Map
(Superseded)
1 9 6 1

I-040-E-800
D-1-T-284
2 0 0 2

A-1-T-222A
Strip Map
1 9 6 2

I-40-5(24)
D-1-T-222
1 9 6 1

A-1-T-210
Strip Map
1 9 5 7

I-40-5(18)
D-1-T-217B
1 9 7 3

D-1-T-252
I-40-5(54)
(Rest Area)
1 9 7 5

I-40-5-839
D-1-T-240
(Abandoned to BIA)
1 9 6 9

I-40-5-850
Drainage esmt
parcel plats
1 9 7 2

Contact Us

Click in colored box to view Plans/Maps
ⓧ Mile Post Number



Right Of Way Index Map	ROUTE I - 40	MILEPOST 341.00 - 359.63
HIGHWAY NAME		Holbrook - Lupton Hwy.

20