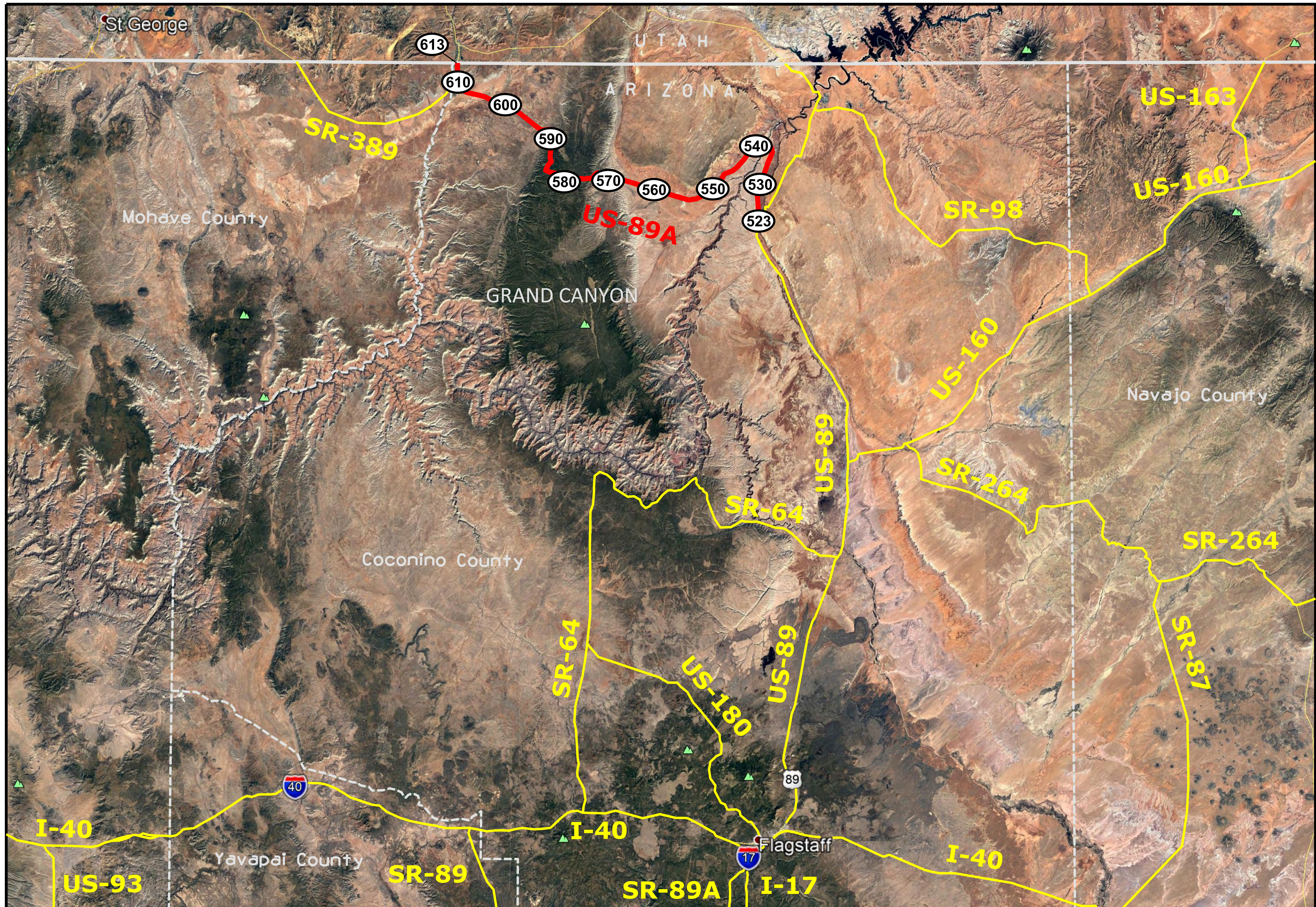


[Click on MilePost numbers](#)  
[to view Plans Index sheets](#)

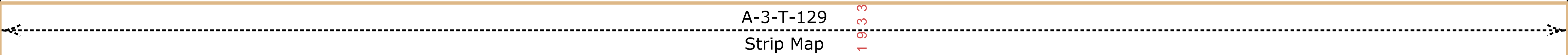
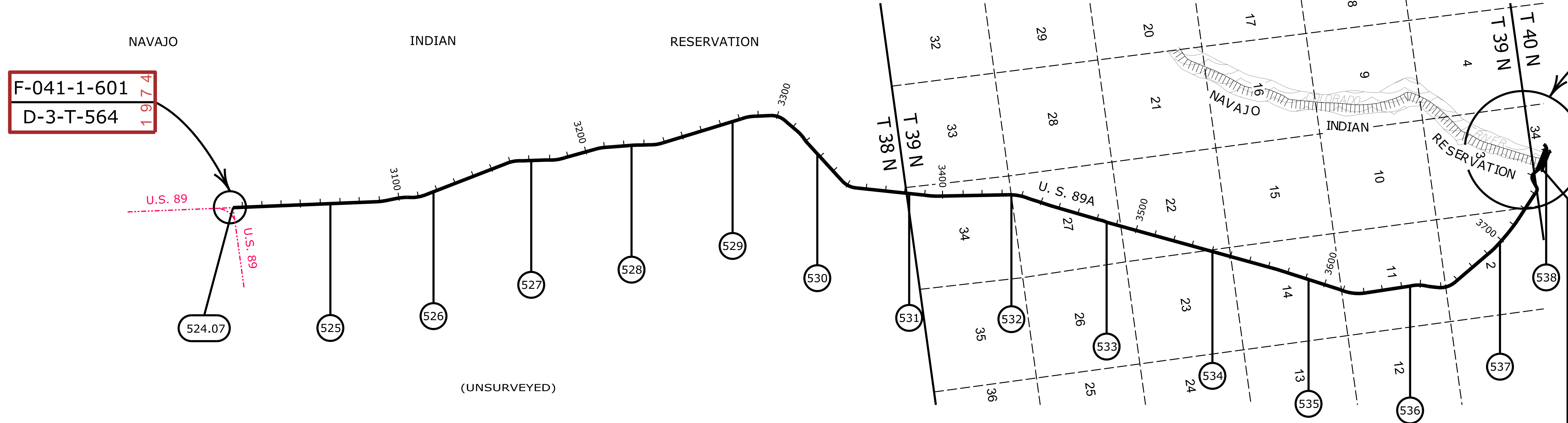
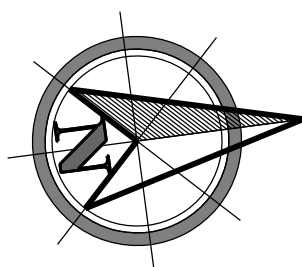
xx Mile Post Numbers

# US 89A

Mile Post: 523 to 613



COCONINO COUNTY



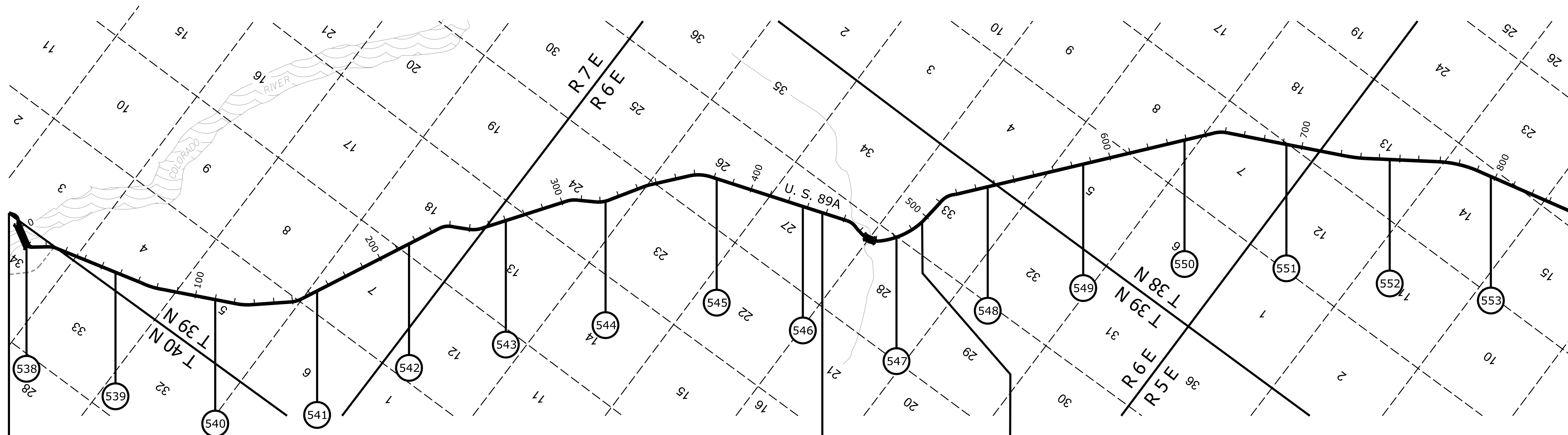
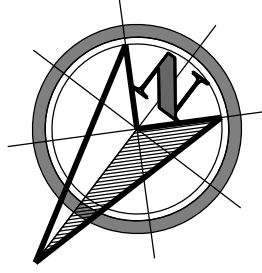
[Contact Us](#)

Click in colored box to view Plans/Maps  
 (xx) Mile Post Number



Right Of Way Index Map	ROUTE US 89A	MILEPOST 524.07 - 538.00
HIGHWAY NAME Bitter Springs - Fredonia Hwy.		

COCONINO COUNTY



F-037-3-806  
 D-3-T-657  
 1 9 9 1

D-3-T-123  
 Strip Map  
 1 9 3 2

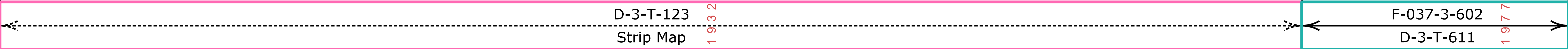
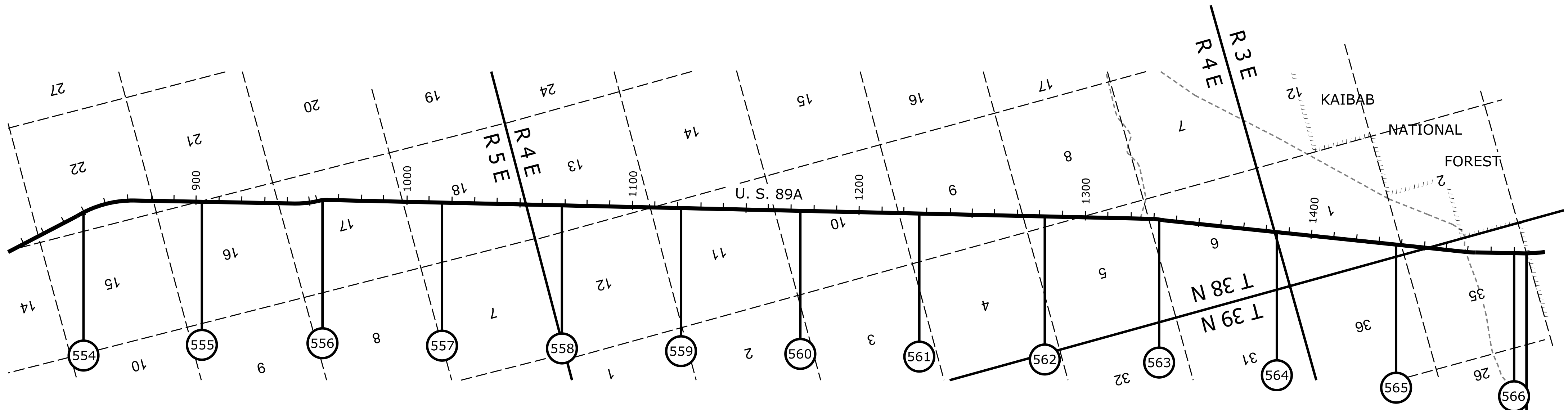
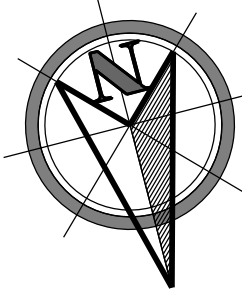
[Contact Us](#)

Click in colored box  
 to view Plans/Maps  
 (xx) Mile Post Number



Right Of Way Index Map	ROUTE US 89A	MILEPOST 538.00 - 553.00
HIGHWAY NAME Bitter Springs - Fredonia Hwy.		

COCONINO COUNTY



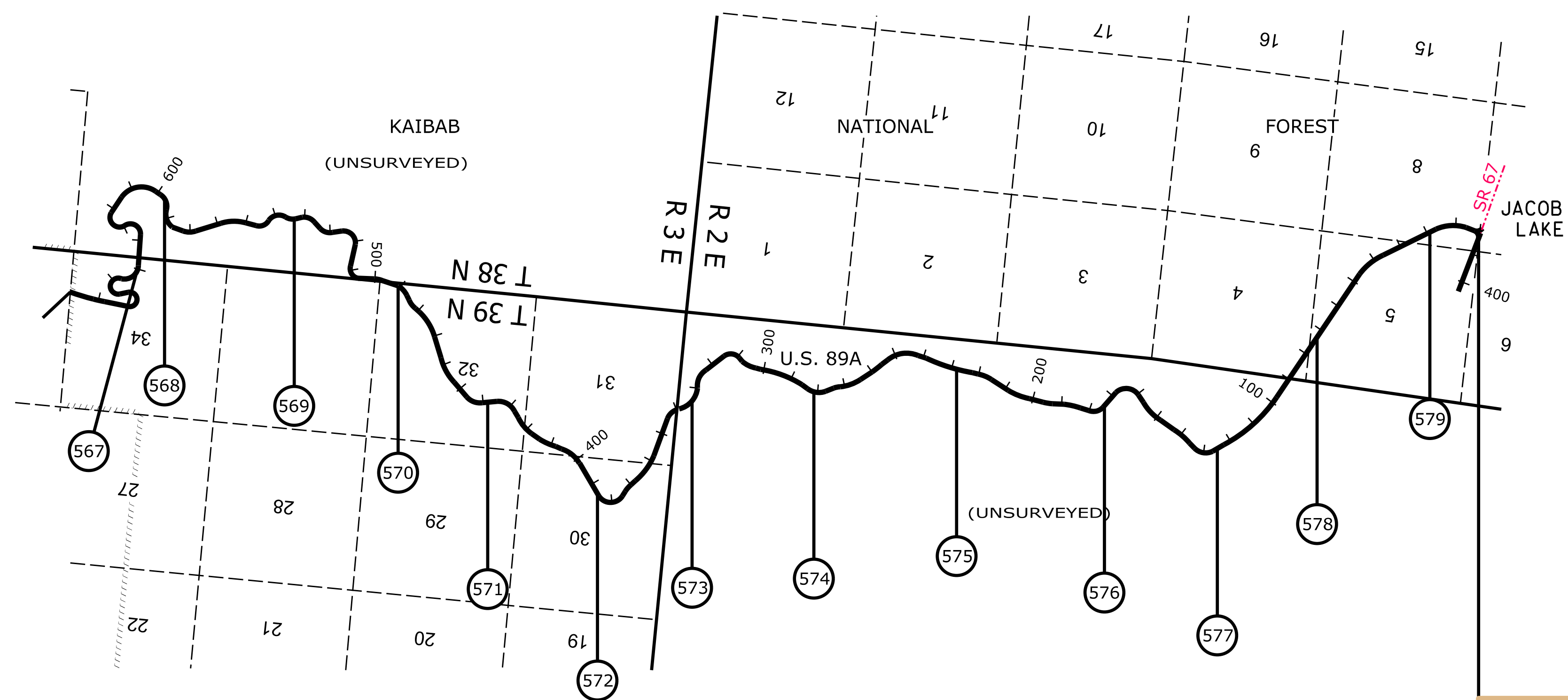
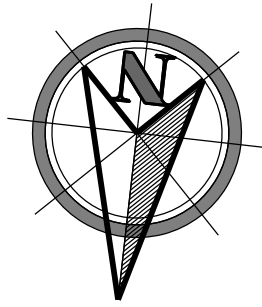
[Contact Us](#)

Click in colored box to view Plans/Maps  
 (xx) Mile Post Number



Right Of Way Index Map	ROUTE US 89A	MILEPOST 554.00 - 566.00
HIGHWAY NAME Bitter Springs - Fredonia Hwy.		

COCONINO COUNTY



A-3-T-188  
Strip Map 1938

F-037-3-602 1977  
D-3-T-611 1977

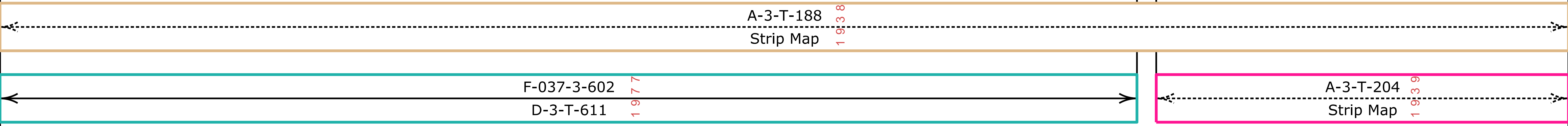
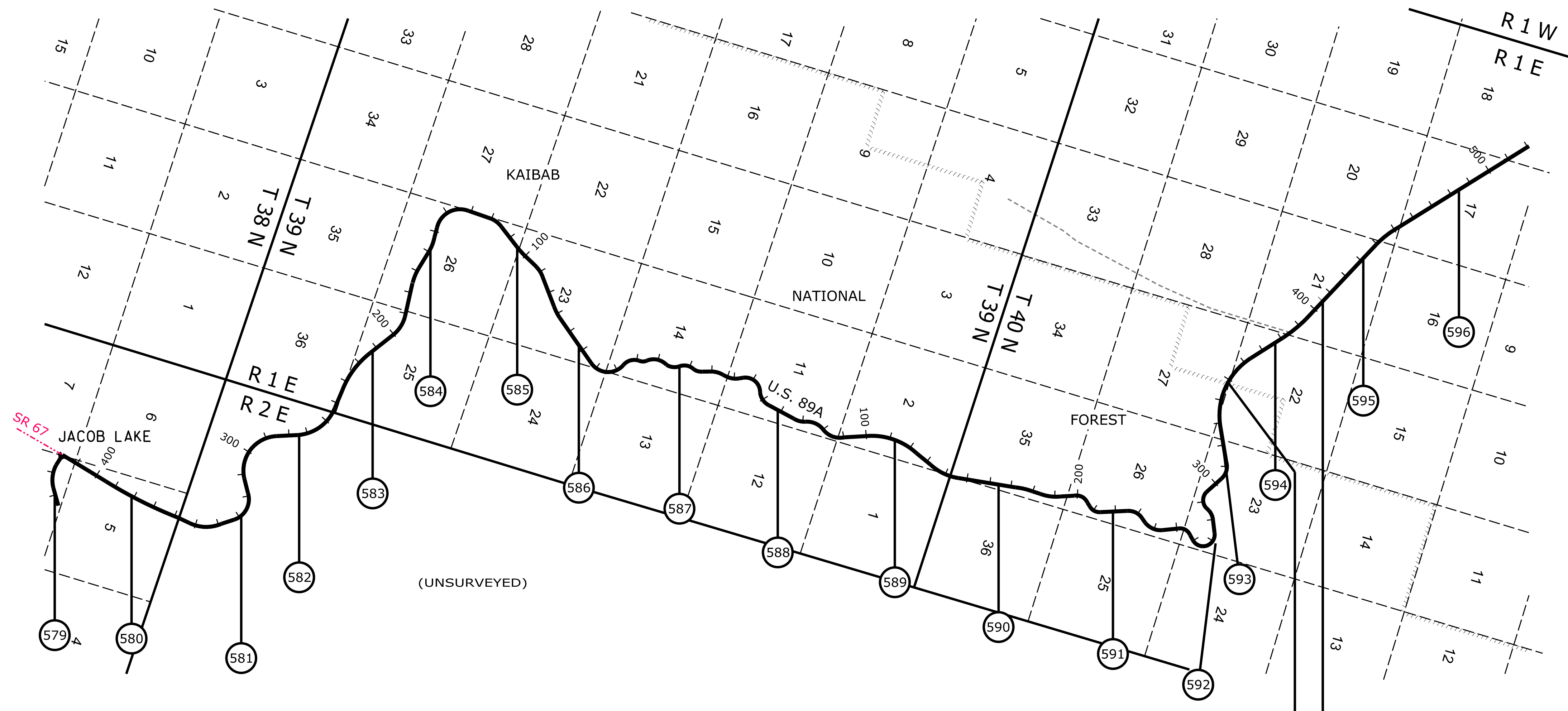
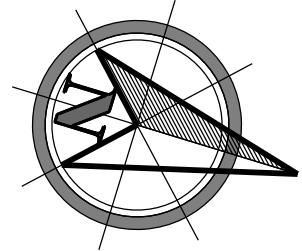
[Contact Us](#)

Click in colored box  
to view Plans/Maps  
ⓧ Mile Post Number



Right Of Way Index Map	ROUTE US 89A	MILEPOST 567.00 - 579.00
HIGHWAY NAME Bitter Springs - Fredonia Hwy.		

COCONINO COUNTY



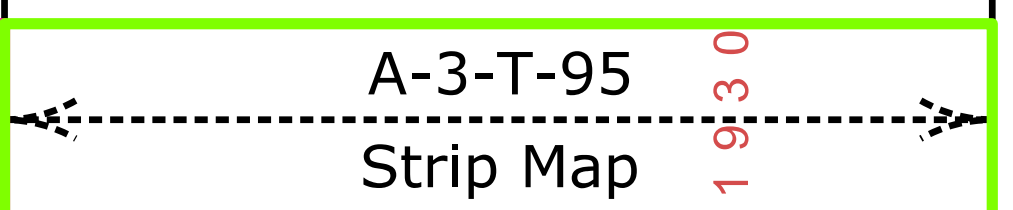
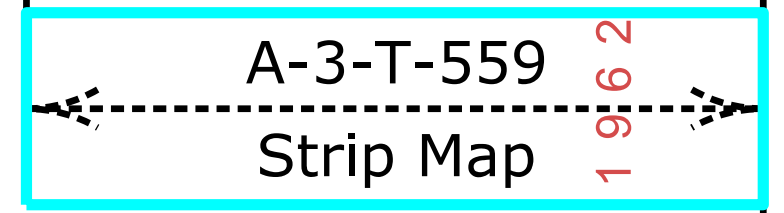
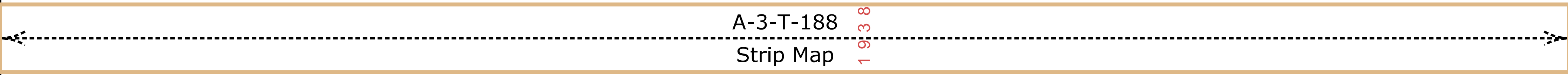
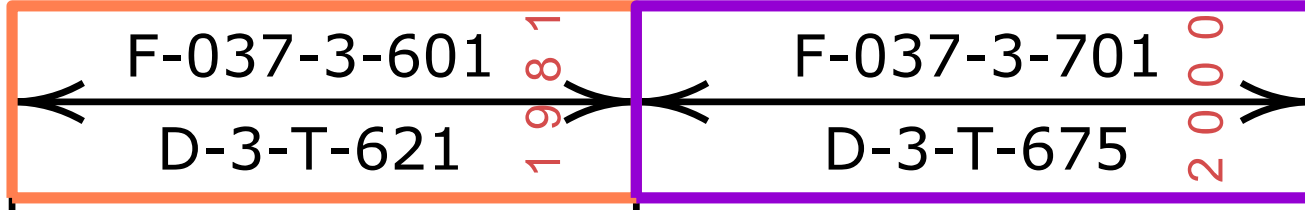
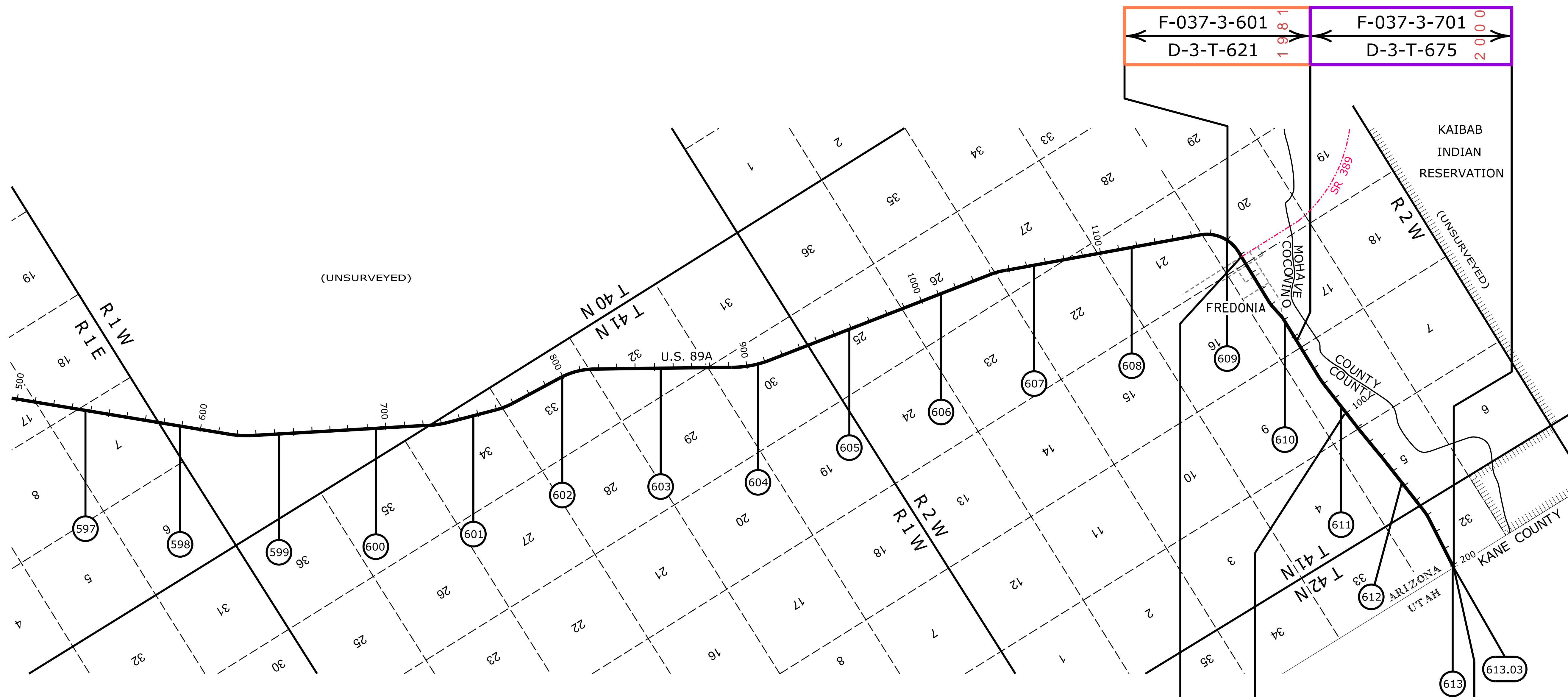
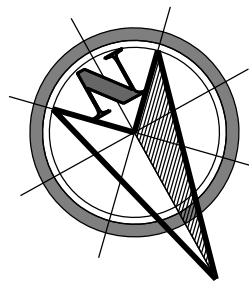
[Contact Us](#)

Click in colored box to view Plans/Maps  
 (xx) Mile Post Number



Right Of Way Index Map	ROUTE US 89A	MILEPOST 579.00 - 596.00
Bitter Springs - Fredonia Hwy.		

COCONINO COUNTY



[Contact Us](#)

Click in colored box to view Plans/Maps  
 (xx) Mile Post Number



Right Of Way Index Map	ROUTE US 89A	MILEPOST 597.00 - 613.03
HIGHWAY NAME Bitter Springs - Fredonia Hwy.		