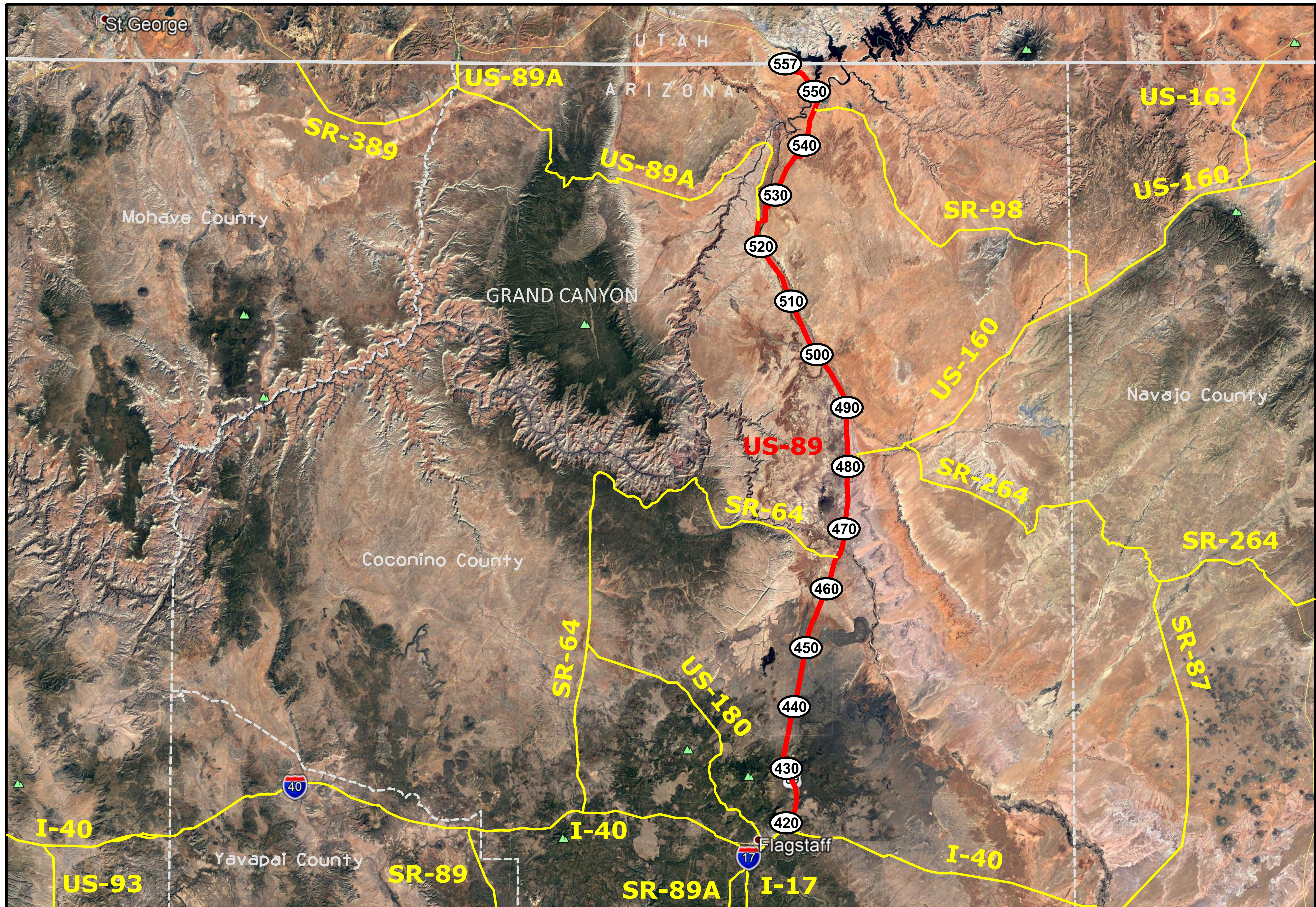


[Click on MilePost numbers](#)
[to view Plans Index sheets](#)

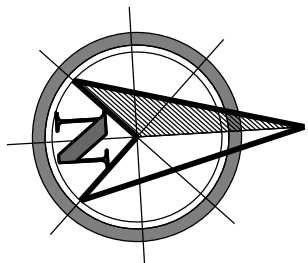
xx Mile Post Numbers

US 89

Mile Post: 420 to 557



COCONINO COUNTY



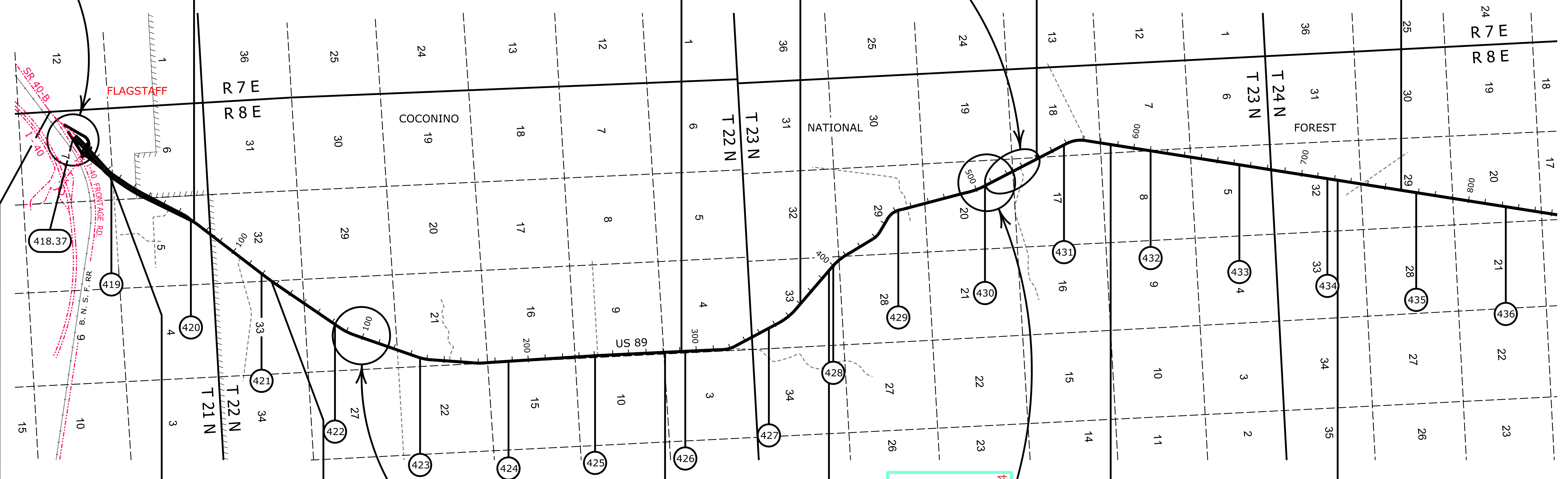
3-T-548A
Strip Map
1 9:6 2

F-037-1-808
D-3-T-600
5 8:6 1

F-039-1
D-3-T-652
0 6:6 1

C-3-T-539
Strip Map
6 9:6 1

F-037-1-707
D-3-T-656
3 6:6 1



F-037-1-803
D-3-T-569
6 2:6 1

F-037-1-701
D-3-T-582
0 7:6 1

F-037-1-601
D-3-T-614
6 2:6 1

F-037-1-811
D-3-T-622
7 8:6 1

F-037-1-814
D-3-T-673
6 6:6 1

F-037-1-709
D-3-T-674
6 6:6 1

F-037-1-706
D-3-T-671
7 6:6 1

U 089-C-801
D-3-T-688
3 0:0 3

D-3-T-76
Strip Map
6 2:9 1

3-T-533
Strip Map
7 5:6 1

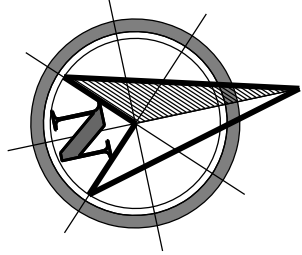
Contact Us

Click in colored box
to view Plans/Maps
⊗ Mile Post Number



Right Of Way Index Map	ROUTE US 89	MILEPOST 418.32 - 436.00
Flagstaff - Cameron Hwy.		

COCONINO COUNTY

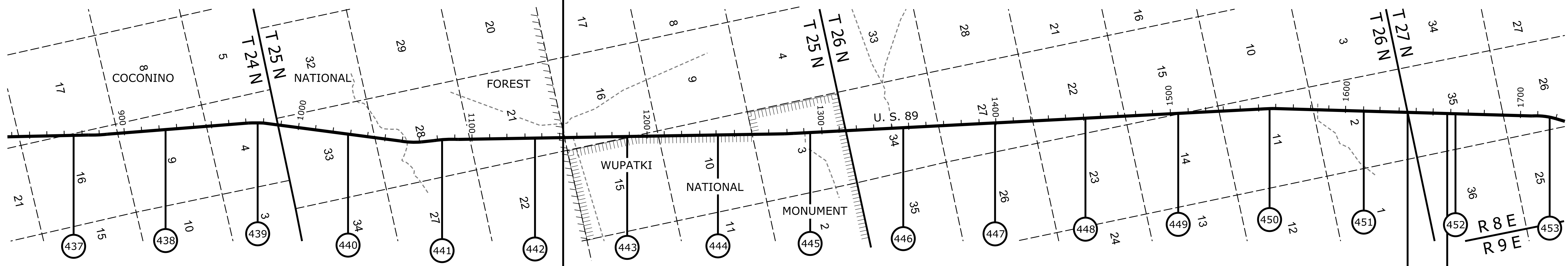


F-037-1-707
D-3-T-656

F-037-1-706
D-3-T-671

F-037-1-813
D-3-T-654

F-037-1-705
D-3-T-642



[Contact Us](#)

Click in colored box
to view Plans/Maps
⊗ Mile Post Number



Right Of Way Index Map

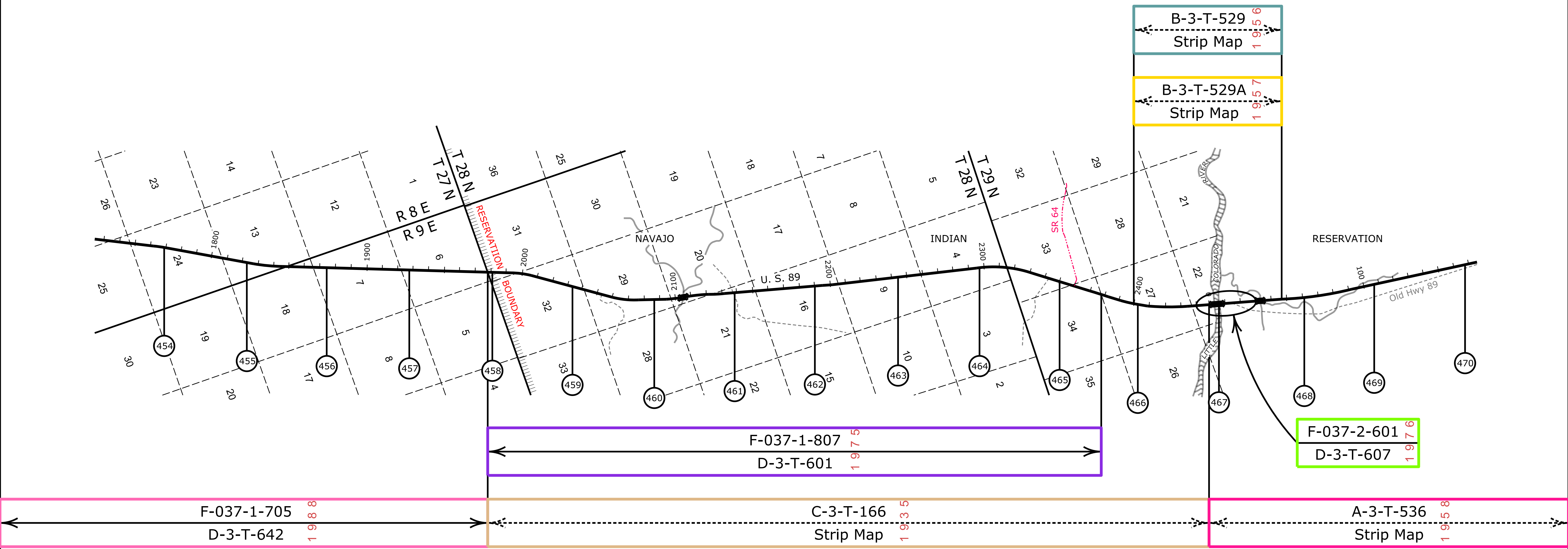
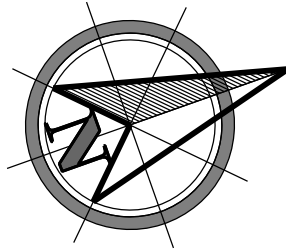
ROUTE US 89

MILEPOST 437.00 - 453.00

HIGHWAY NAME

Flagstaff - Cameron Hwy.

COCONINO COUNTY



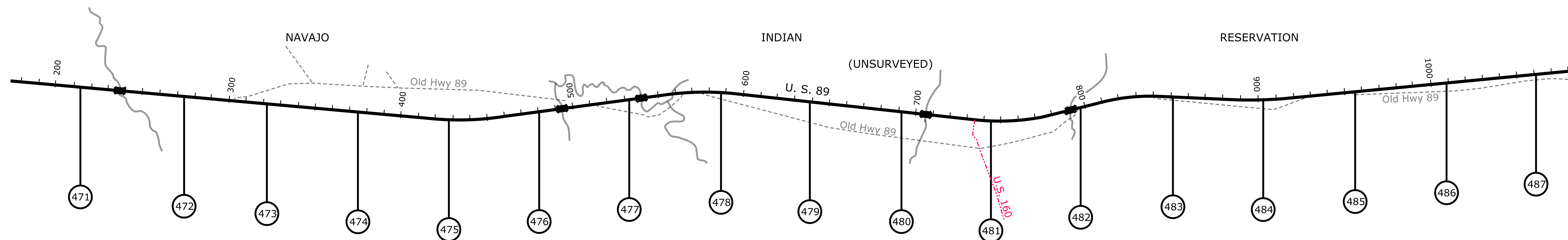
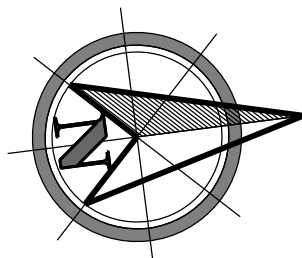
[Contact Us](#)

Click in colored box to view Plans/Maps
 (xx) Mile Post Number



Right Of Way Index Map	ROUTE US 89	MILEPOST 454.00 - 470.00
HIGHWAY NAME Flagstaff - Cameron Hwy.		

COCONINO COUNTY



A-3-T-536
Strip Map 1958

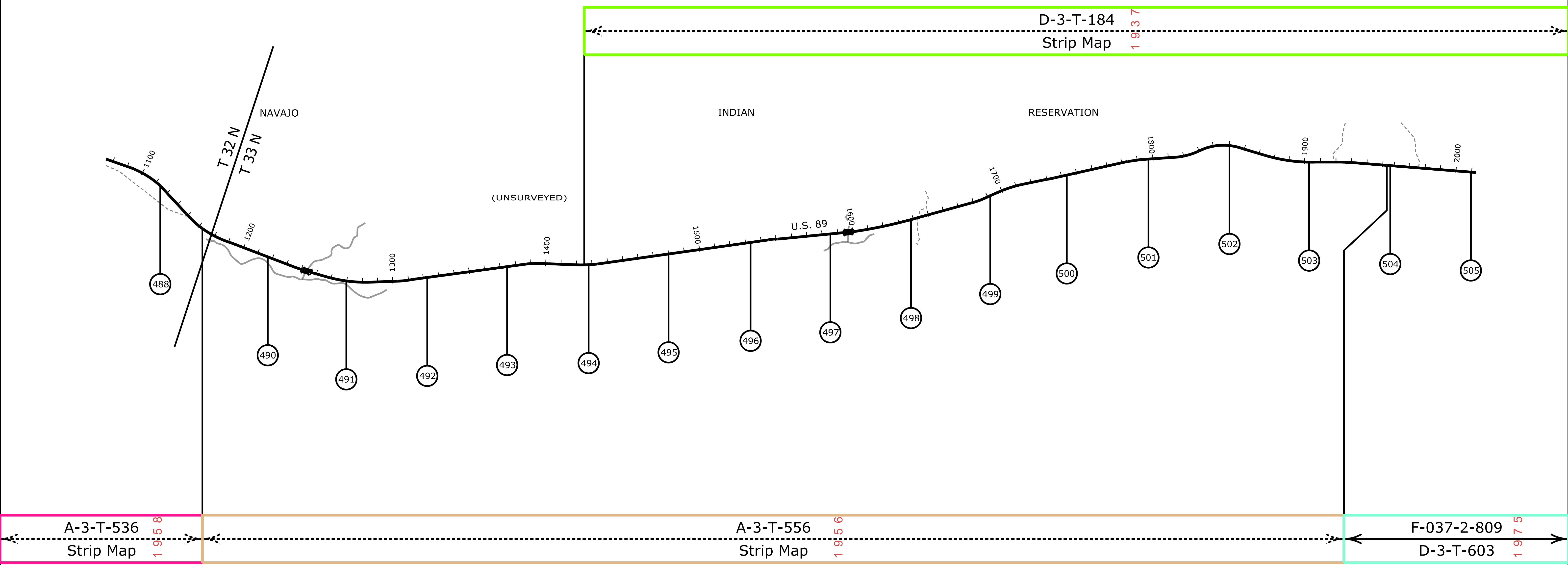
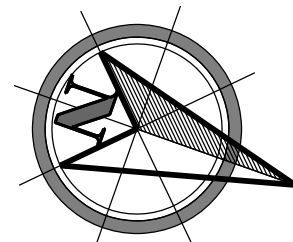
[Contact Us](#)

Click in colored box
to view Plans/Maps
ⓧ Mile Post Number



Right Of Way Index Map	ROUTE US 89	MILEPOST 471.00 - 487.00
HIGHWAY NAME Cameron - Bitter Springs Hwy.		

COCONINO COUNTY



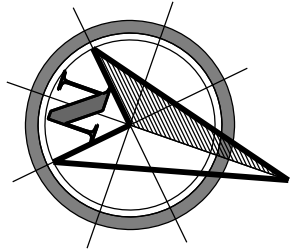
[Contact Us](#)

Click in colored box to view Plans/Maps
 (xx) Mile Post Number

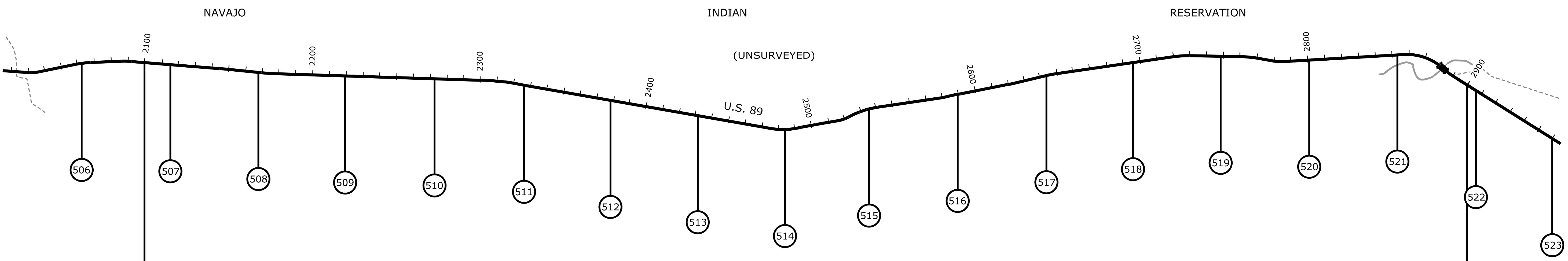


Right Of Way Index Map	ROUTE US 89	MILEPOST 488.00 - 505.00
HIGHWAY NAME Cameron - Bitter Springs Hwy.		

COCONINO COUNTY



D-3-T-184
Strip Map 1937



F-037-2-809
D-3-T-603 1975

A-3-T-128
Strip Map 1933

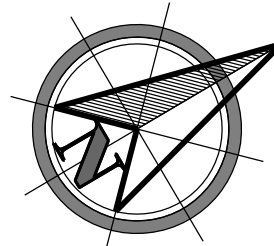
Contact Us

Click in colored box
to view Plans/Maps
ⓧ Mile Post Number



Right Of Way Index Map	ROUTE US 89	MILEPOST 506.00 - 523.00
HIGHWAY NAME Cameron - Bitter Springs Hwy.		

COCONINO COUNTY



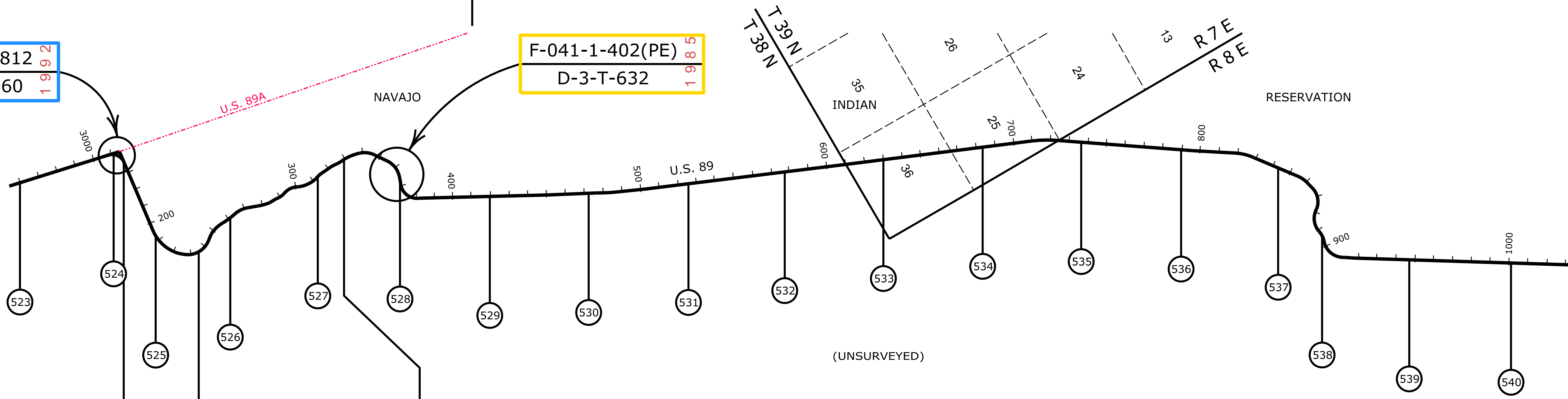
D-3-T-184
Strip Map 1937

F-037-2-812
D-3-T-660 1992

F-041-1-402(PE)
D-3-T-632 1985

089 CN 526 H8641
D-3-T-705 2013

F-041-601
D-3-T-564A & D-3-T-564B 1961



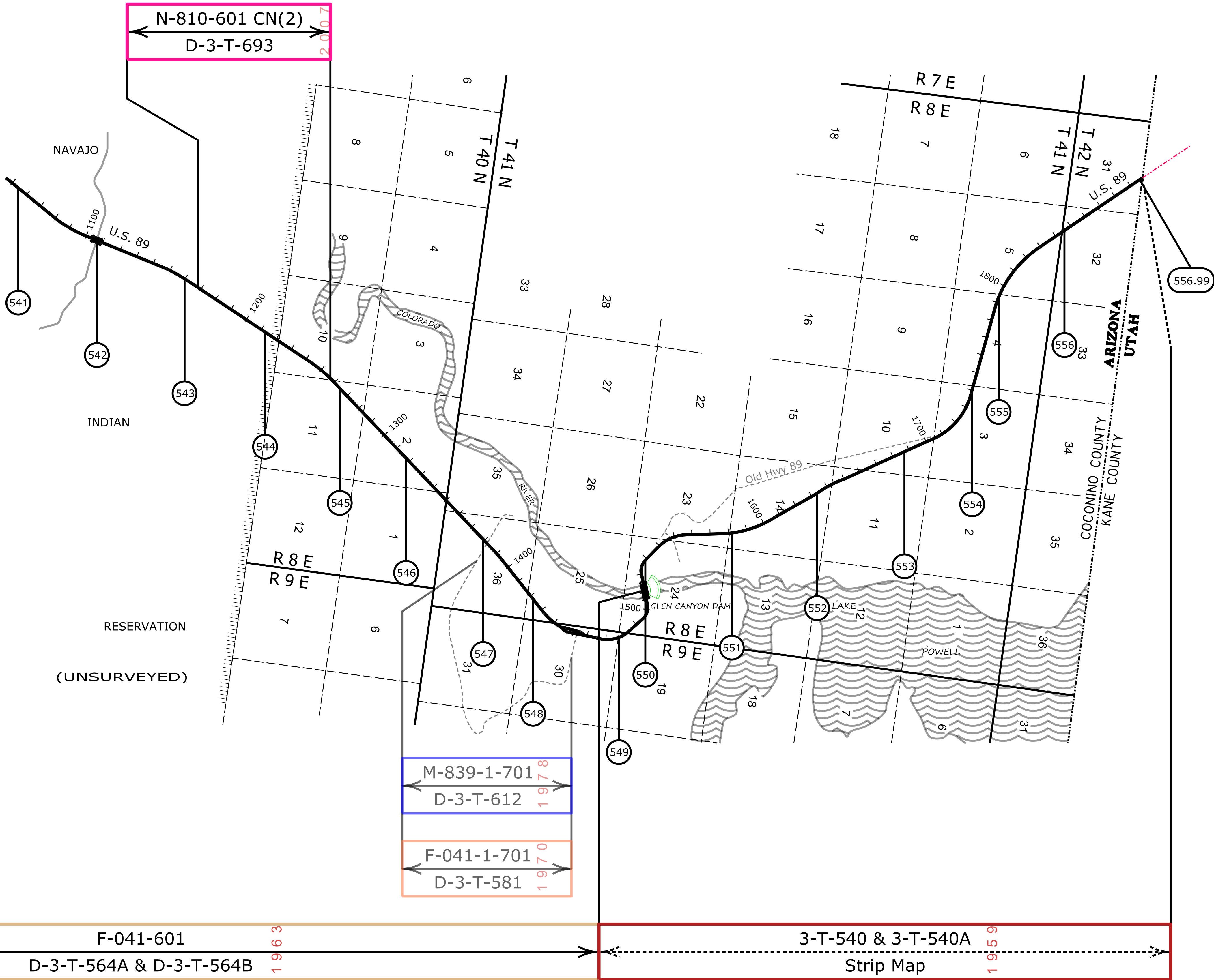
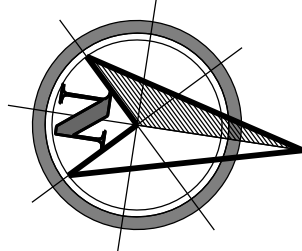
Contact Us

Click in colored box
to view Plans/Maps
Mile Post Number



Right Of Way Index Map	ROUTE US 89	MILEPOST 523.00 - 540.00
HIGHWAY NAME Bitter Springs - Utah State Line Hwy.		

COCONINO COUNTY



[Contact Us](#)

Click in colored box to view Plans/Maps

⊗ Mile Post Number



Right Of Way Index Map

HIGHWAY NAME

Bitter Springs - Utah State Line Hwy.

ROUTE US 89

MILEPOST 541.00 - 556.99