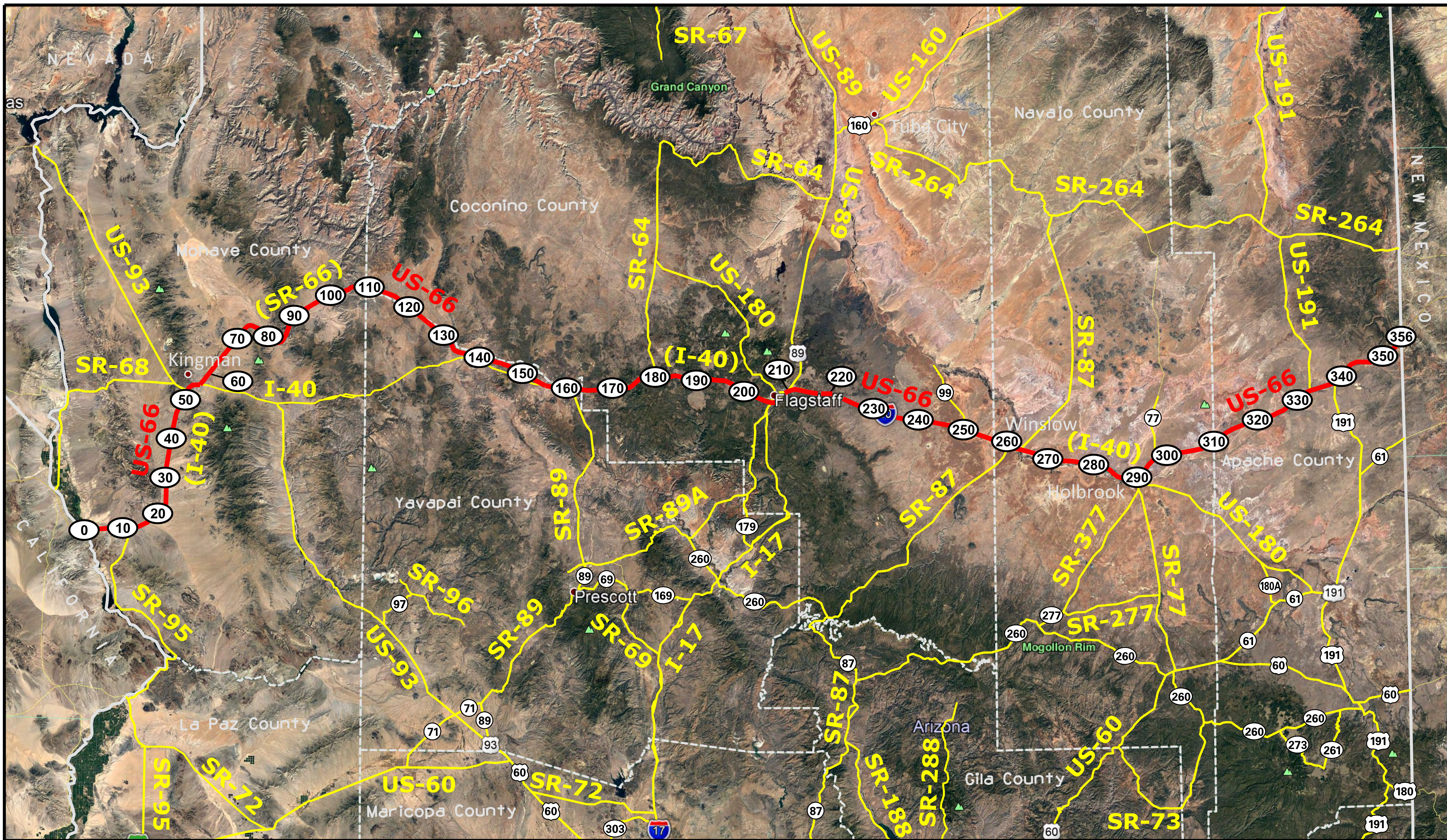


Click on APPROXIMATE MilePost numbers
to view Plans Index sheets

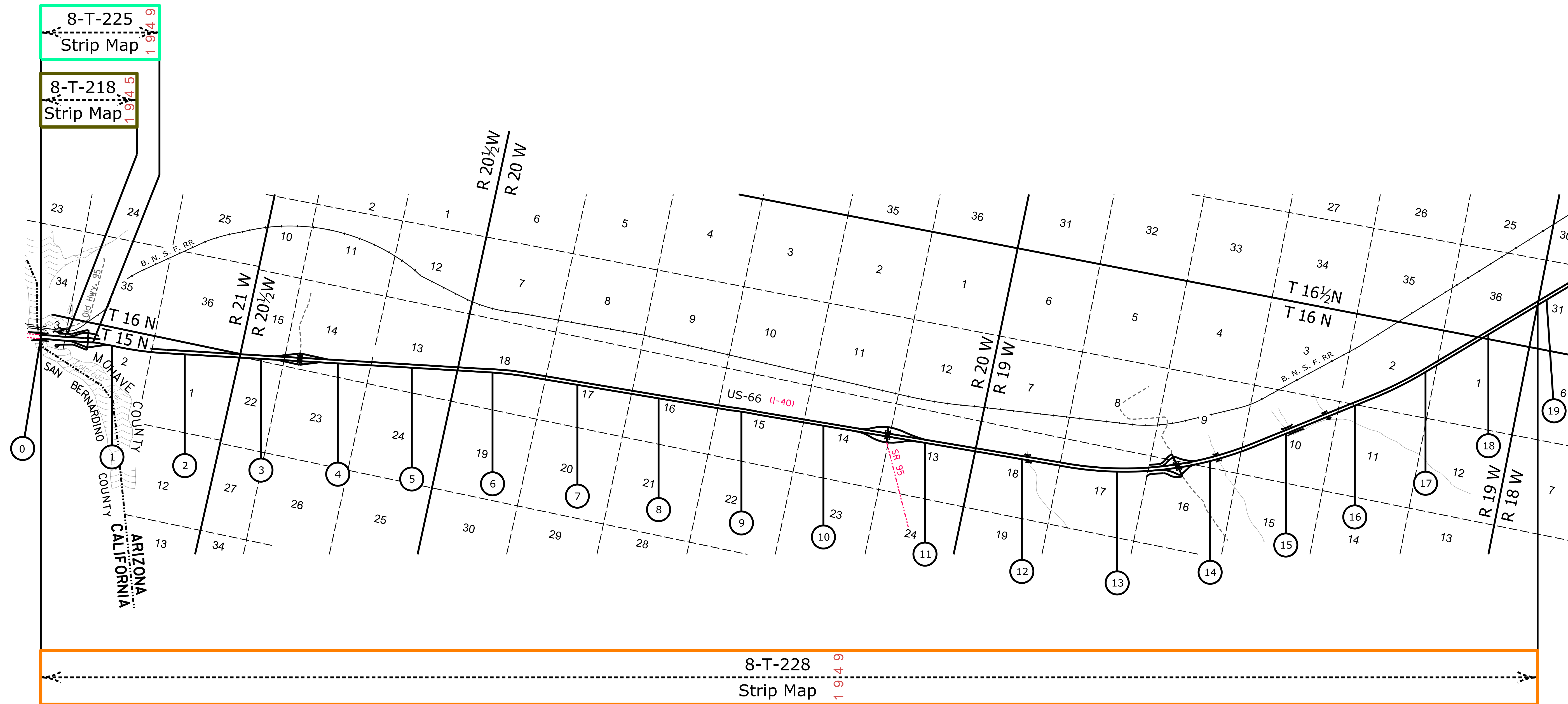
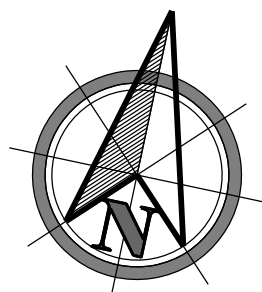
xx Mile Post Numbers

US 66

Mile Post: 0 to 356



MOHAVE COUNTY



8-T-228
Strip Map 1 94 9

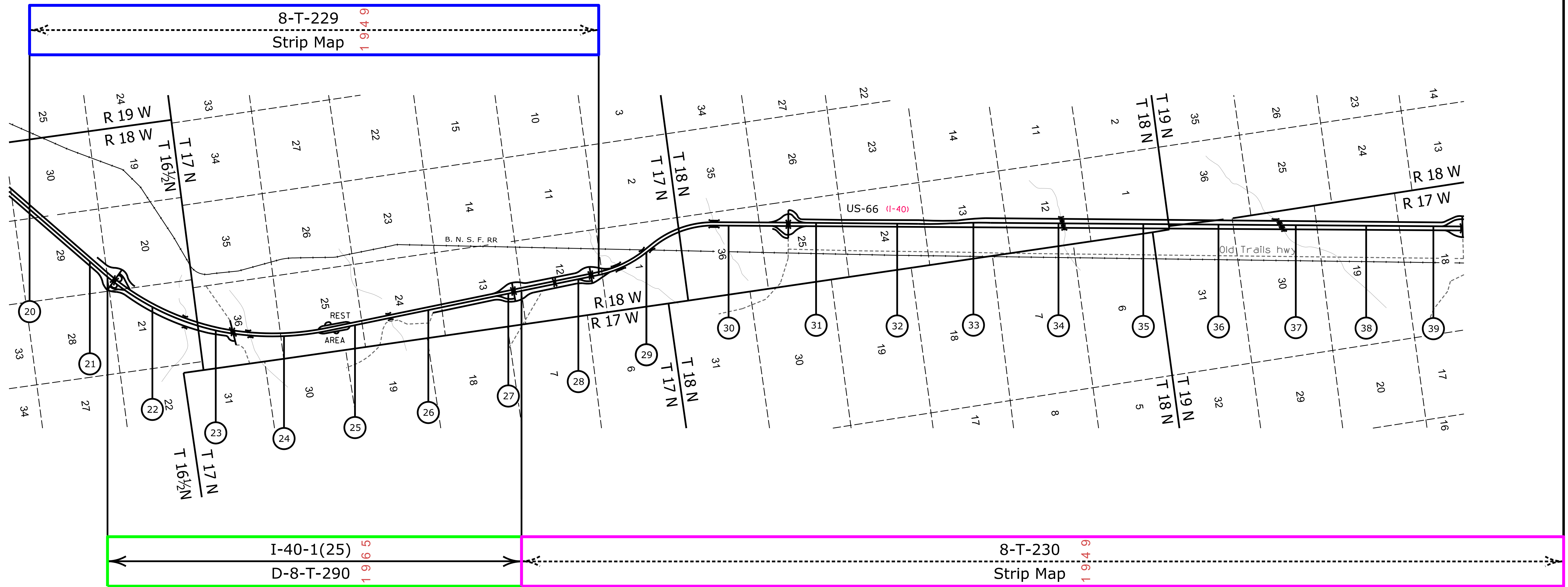
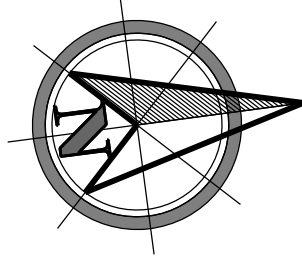
[Contact Us](#)

Click in colored box
to view Plans/Maps
ⓧ Mile Post Number

NOTE: Mile Post Approximate for Index purpose only

| | | | |
|--------------------------|---------------------------------------|-------------|-----------------------|
| Right Of Way Section | Right Of Way Index Map | ROUTE US-66 | MILEPOST 0.00 - 19.00 |
| | HIGHWAY NAME Topock - Kingman Hwy. | | |

MOHAVE COUNTY



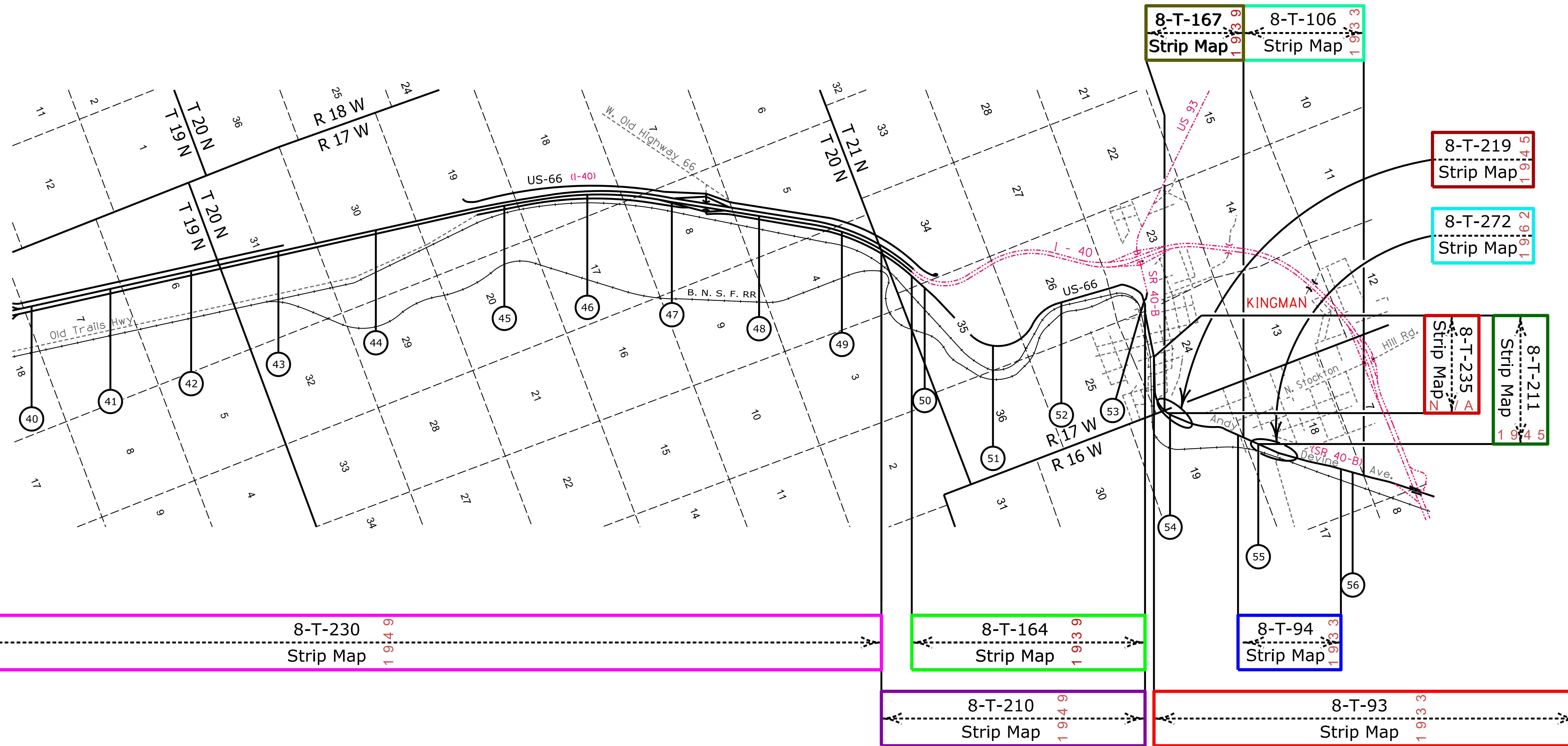
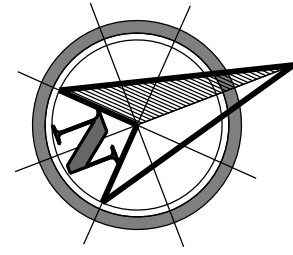
NOTE: Mile Post Approximate for Index purpose only

[Contact Us](#)

Click in colored box to view Plans/Maps
 (xx) Mile Post Number

| | | | | |
|--------------------------|------------------------------------|-------------|------------------------|------------|
| Right Of Way Section | Right Of Way Index Map | ROUTE US-66 | MILEPOST 20.00 - 39.00 | <h1>2</h1> |
| | HIGHWAY NAME Topock - Kingman Hwy. | | | |

MOHAVE COUNTY



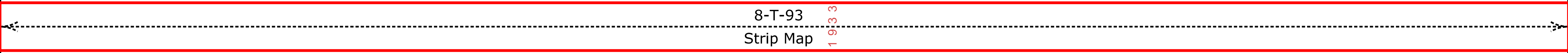
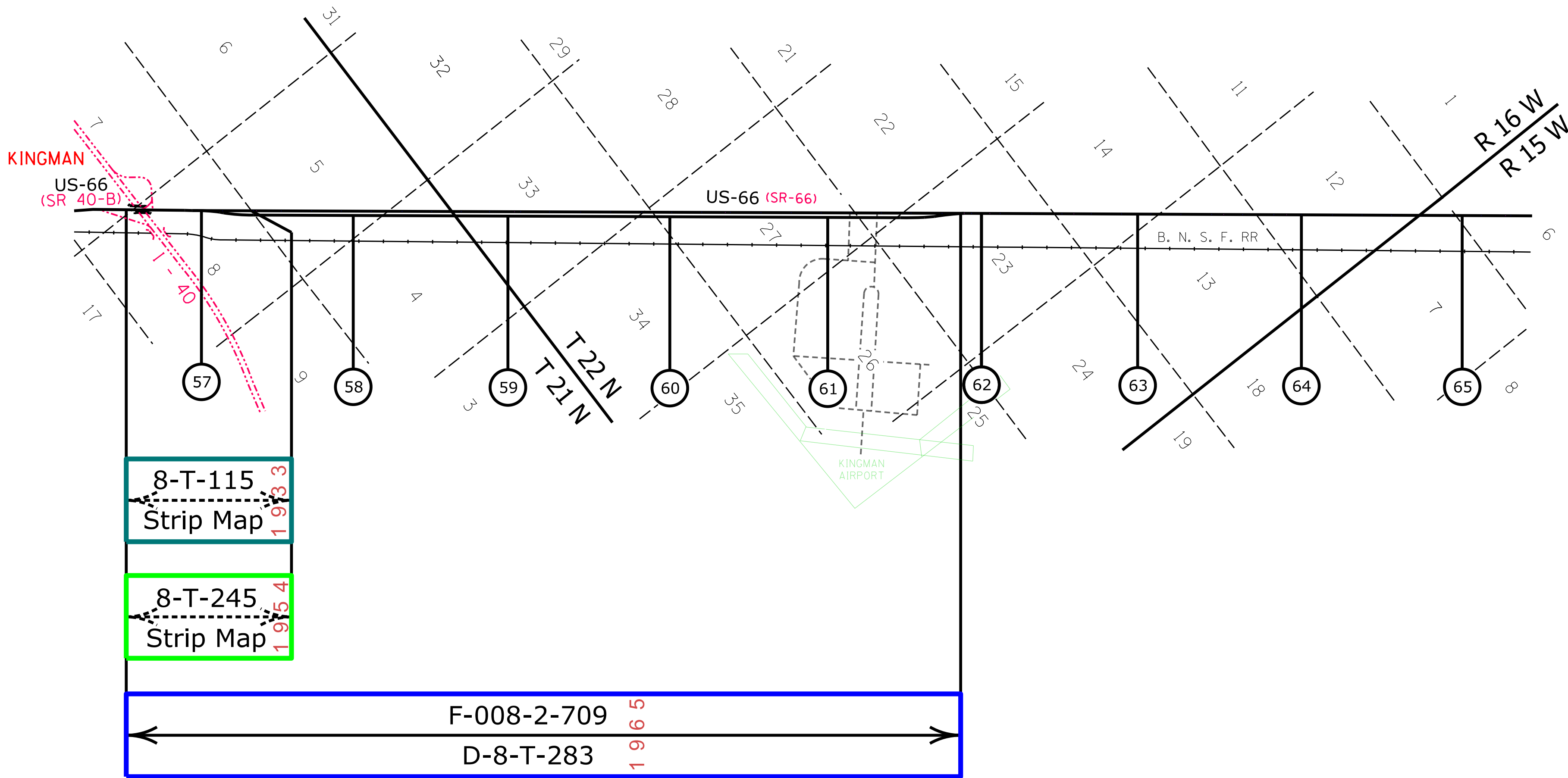
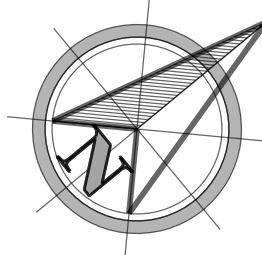
[Contact Us](#)

Click in colored box
to view Plans/Maps
ⓧ Mile Post Number

NOTE: Mile Post Approximate for Index purpose only

| | | | | |
|--------------------------|------------------------|-------------|------------------------|---|
| Right Of Way Section | Right Of Way Index Map | ROUTE US-66 | MILEPOST 40.00 - 56.00 | 3 |
| | Topock - Kingman Hwy. | | | |

MOHAVE COUNTY



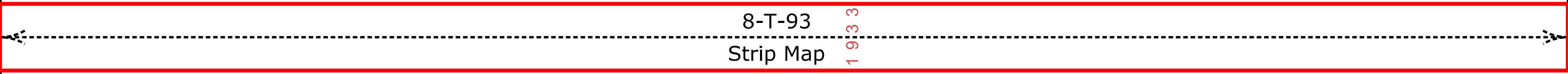
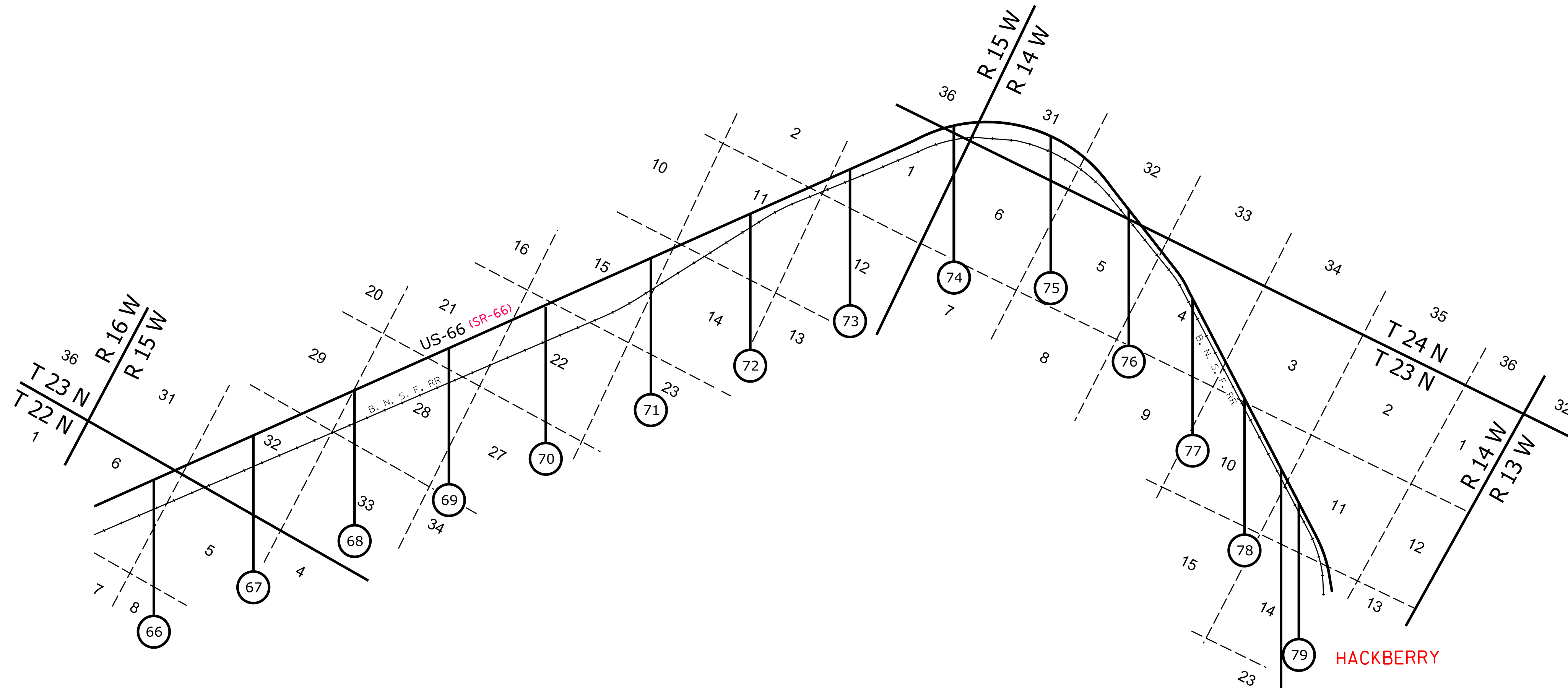
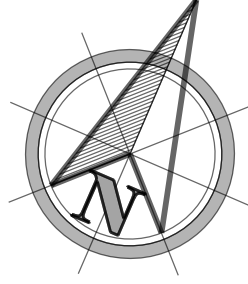
[Contact Us](#)

Click in colored box to view Plans/Maps
 (xx) Mile Post Number

NOTE: Mile Post Approximate for Index purpose only

| | | | |
|----------------------|--------------------------------------|-------------|------------------------|
| Right Of Way Section | Right Of Way Index Map | ROUTE US-66 | MILEPOST 56.00 - 65.00 |
| | HIGHWAY NAME Kingman - Seligman Hwy. | | |

MOHAVE COUNTY



NOTE: Mile Post Approximate for Index purpose only

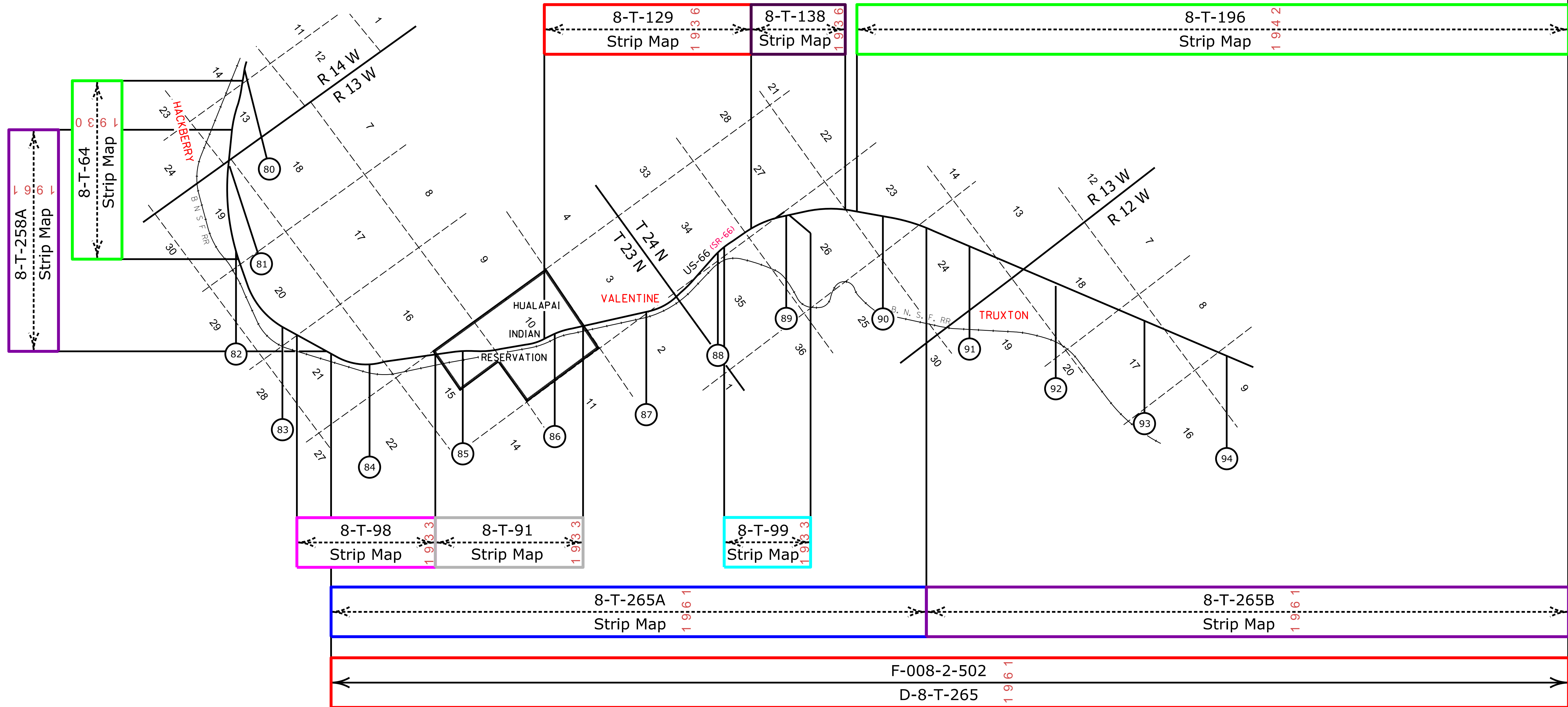
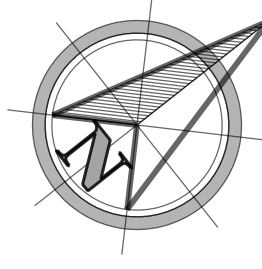
[Contact Us](#)

Click in colored box to view Plans/Maps
 (xx) Mile Post Number



| | | |
|--------------------------------------|-------------|------------------------|
| Right Of Way Index Map | ROUTE US-66 | MILEPOST 65.00 - 80.00 |
| HIGHWAY NAME Kingman - Seligman Hwy. | | |

MOHAVE COUNTY



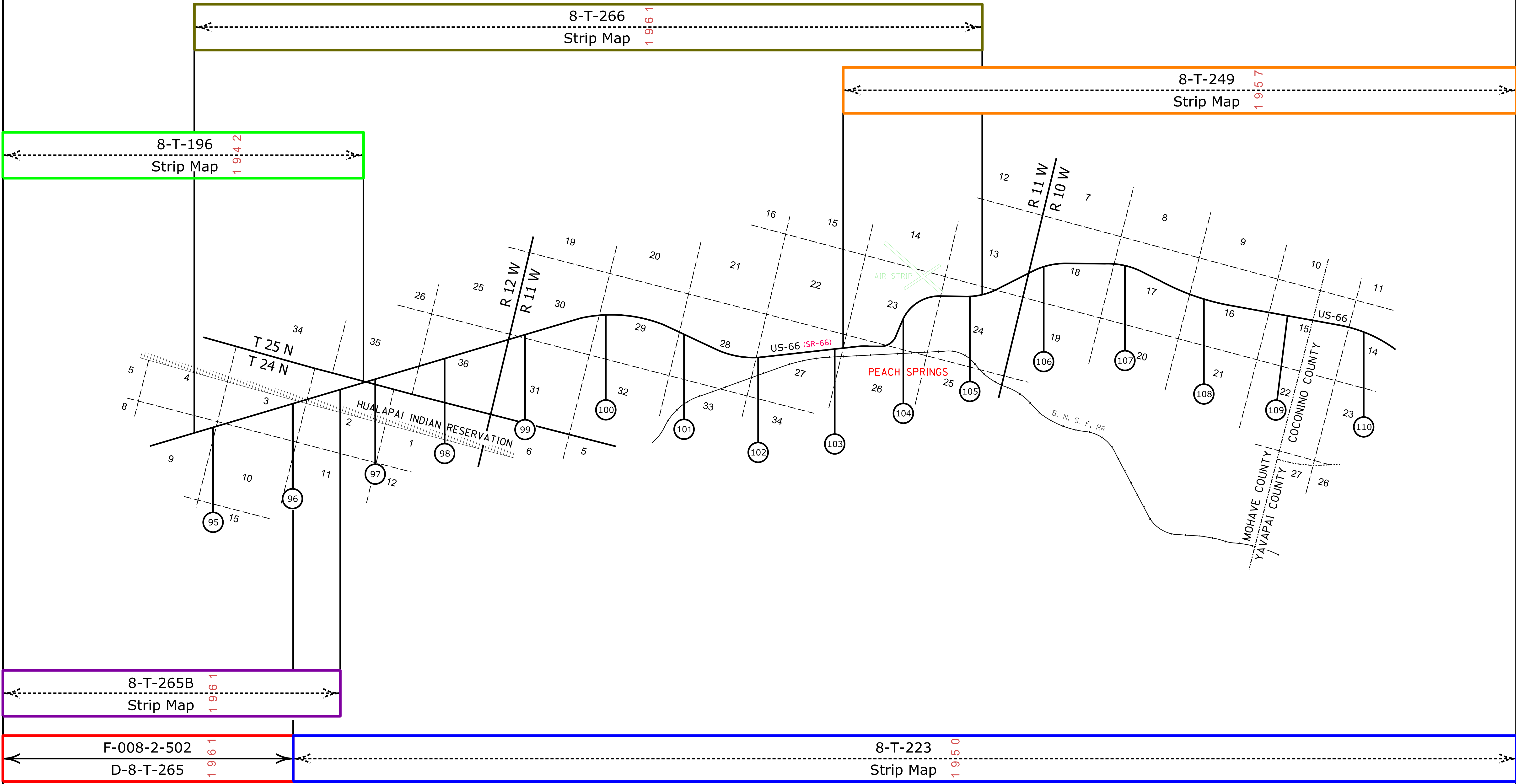
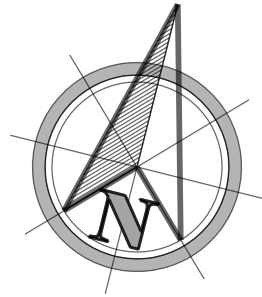
NOTE: Mile Post Approximate for Index purpose only

[Contact Us](#)

Click in colored box
to view Plans/Maps
ⓧ Mile Post Number



| | | |
|--------------------------------------|-------------|------------------------|
| Right Of Way Index Map | ROUTE US-66 | MILEPOST 80.00 - 95.00 |
| HIGHWAY NAME Kingman - Seligman Hwy. | | |



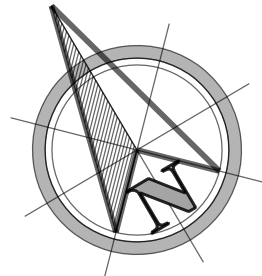
NOTE: Mile Post Approximate for Index purpose only

[Contact Us](#)

Click in colored box to view Plans/Maps
(xx) Mile Post Number

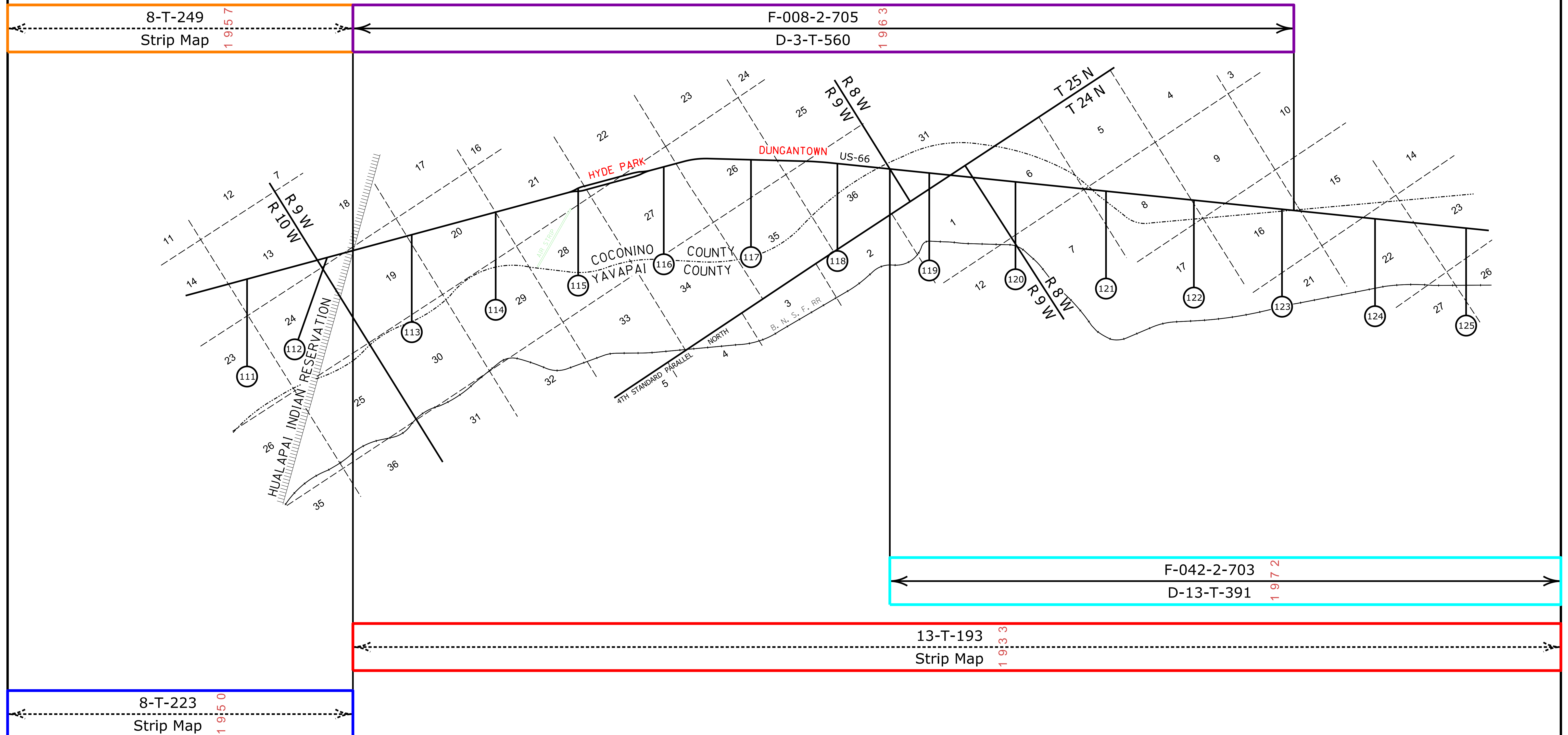


| | | |
|--------------------------------------|-------------|-------------------------|
| Right Of Way Index Map | ROUTE US-66 | MILEPOST 95.00 - 110.00 |
| HIGHWAY NAME Kingman - Seligman Hwy. | | |



COCONINO COUNTY

YAVAPAI COUNTY



8-T-249

Strip Map

1 9 5 7

F-008-2-705

D-3-T-560

1 9 6 3

F-042-2-703

D-13-T-391

1 9 7 2

13-T-193

Strip Map

1 9 3 3

8-T-223

Strip Map

1 9 5 0

NOTE: Mile Post Approximate for Index purpose only

Contact Us

Click in colored box to view Plans/Maps

(xx) Mile Post Number



Right Of Way Index Map

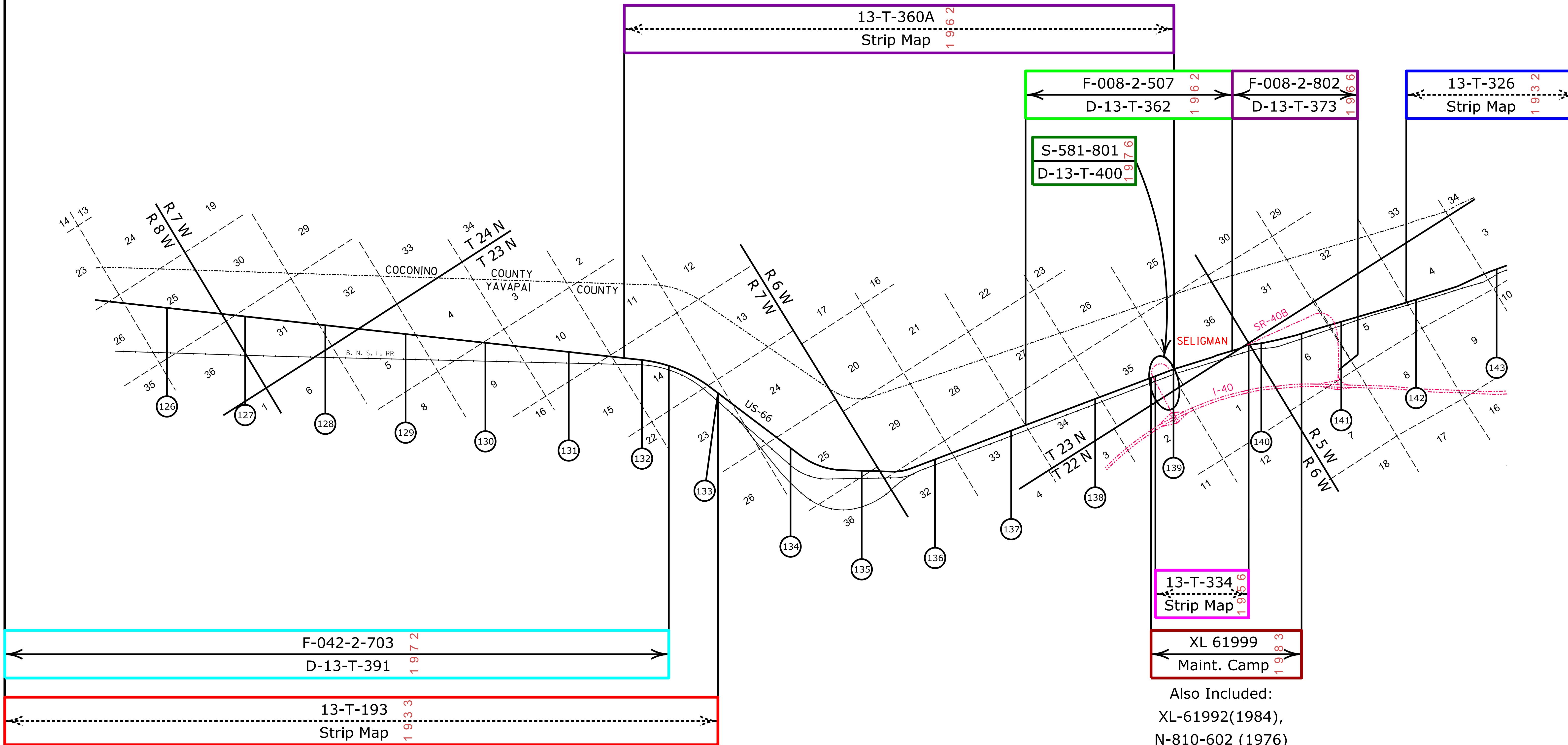
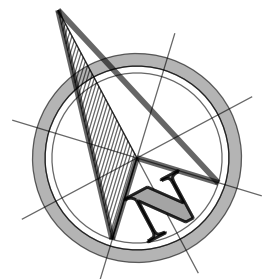
ROUTE US-66

MILEPOST 111.00 - 125.00

HIGHWAY NAME

Kingman - Seligman Hwy.

8



Also Included:
 XL-61992(1984),
 N-810-602 (1976)

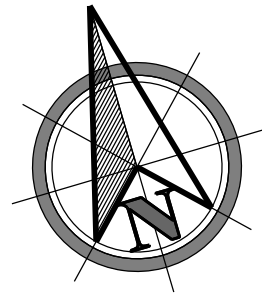
NOTE: Mile Post Approximate for Index purpose only

[Contact Us](#)

Click in colored box
 to view Plans/Maps
 (xx) Mile Post Number



| | | |
|--------------------------------------|-------------|--------------------------|
| Right Of Way Index Map | ROUTE US-66 | MILEPOST 126.00 - 143.00 |
| HIGHWAY NAME Kingman - Seligman Hwy. | | |

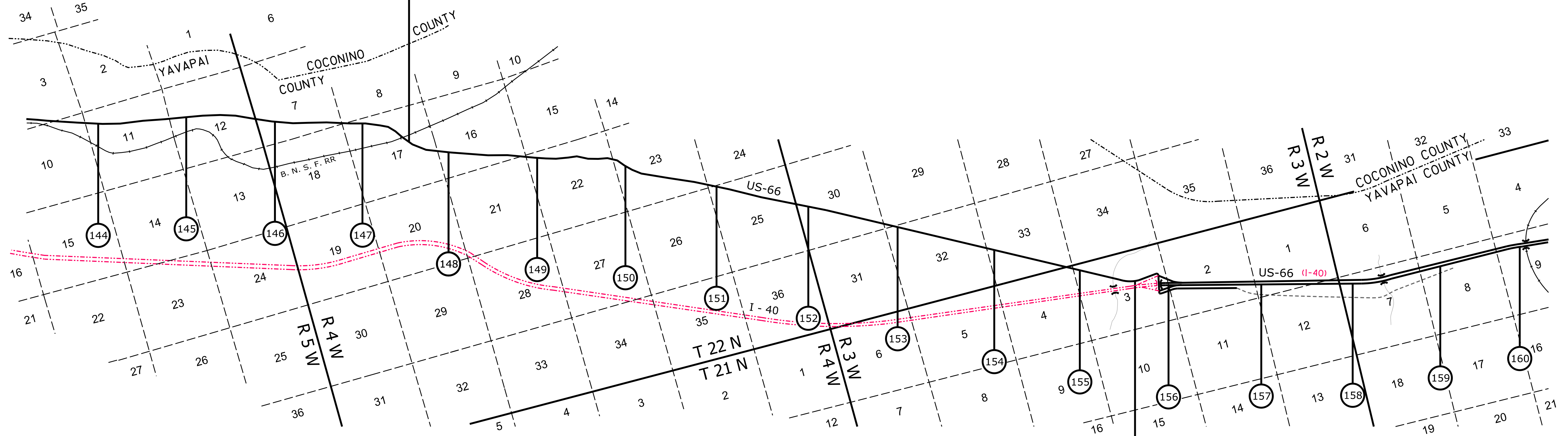


COCONINO COUNTY

YAVAPAI COUNTY

13-T-326
Strip Map

1932



13-T-330
Strip Map

1954

NOTE: Mile Post Approximate for Index purpose only

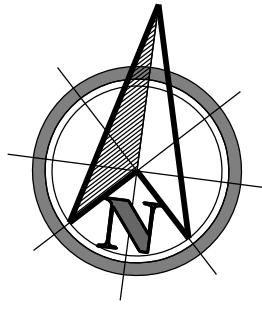
[Contact Us](#)

Click in colored box
to view Plans/Maps
ⓧ Mile Post Number



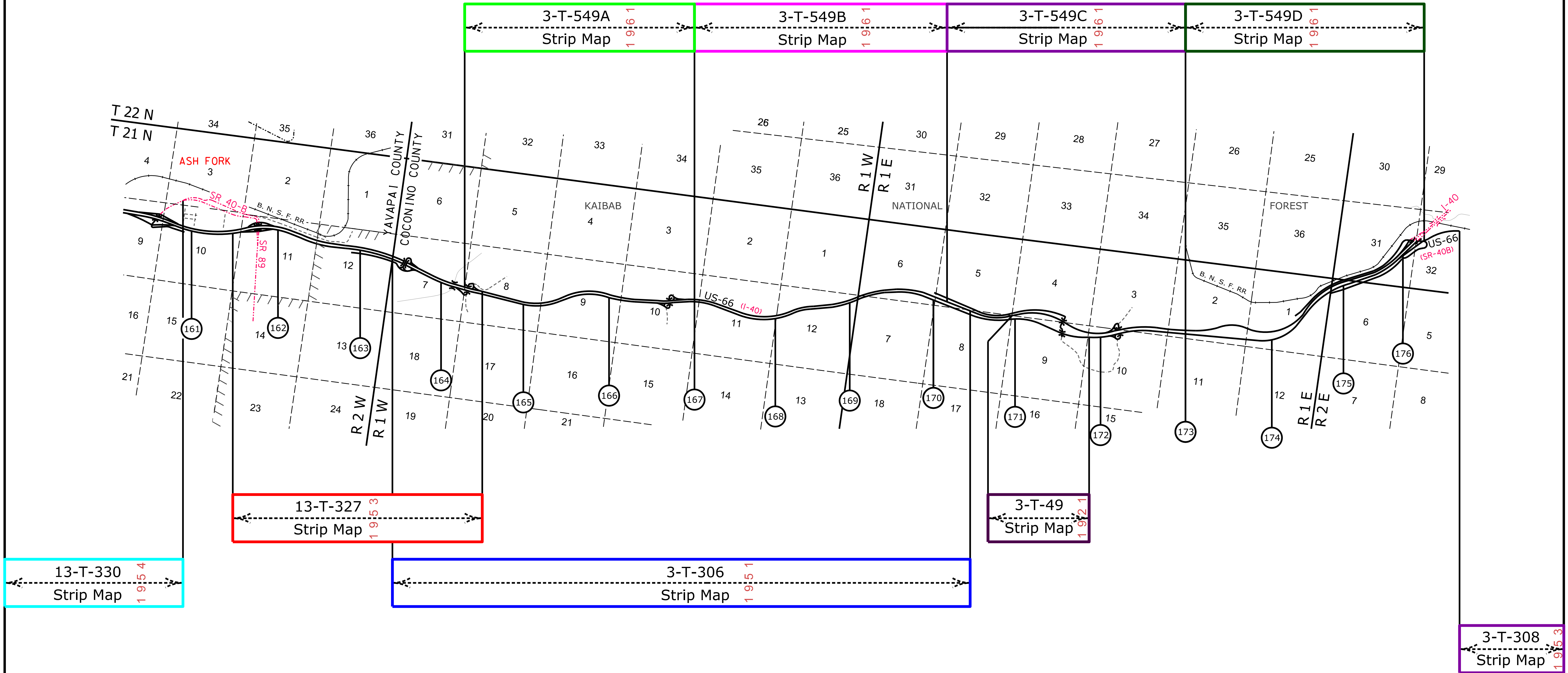
| | | |
|---|----------------|-----------------------------|
| Right Of Way Index Map | ROUTE US-66 | MILEPOST 143.00 - 160.00 |
| HIGHWAY NAME Kingman - Ash Fork Hwy. | | |

10



YAVAPAI COUNTY

COCONINO COUNTY



NOTE: Mile Post Approximate for Index purpose only

[Contact Us](#)

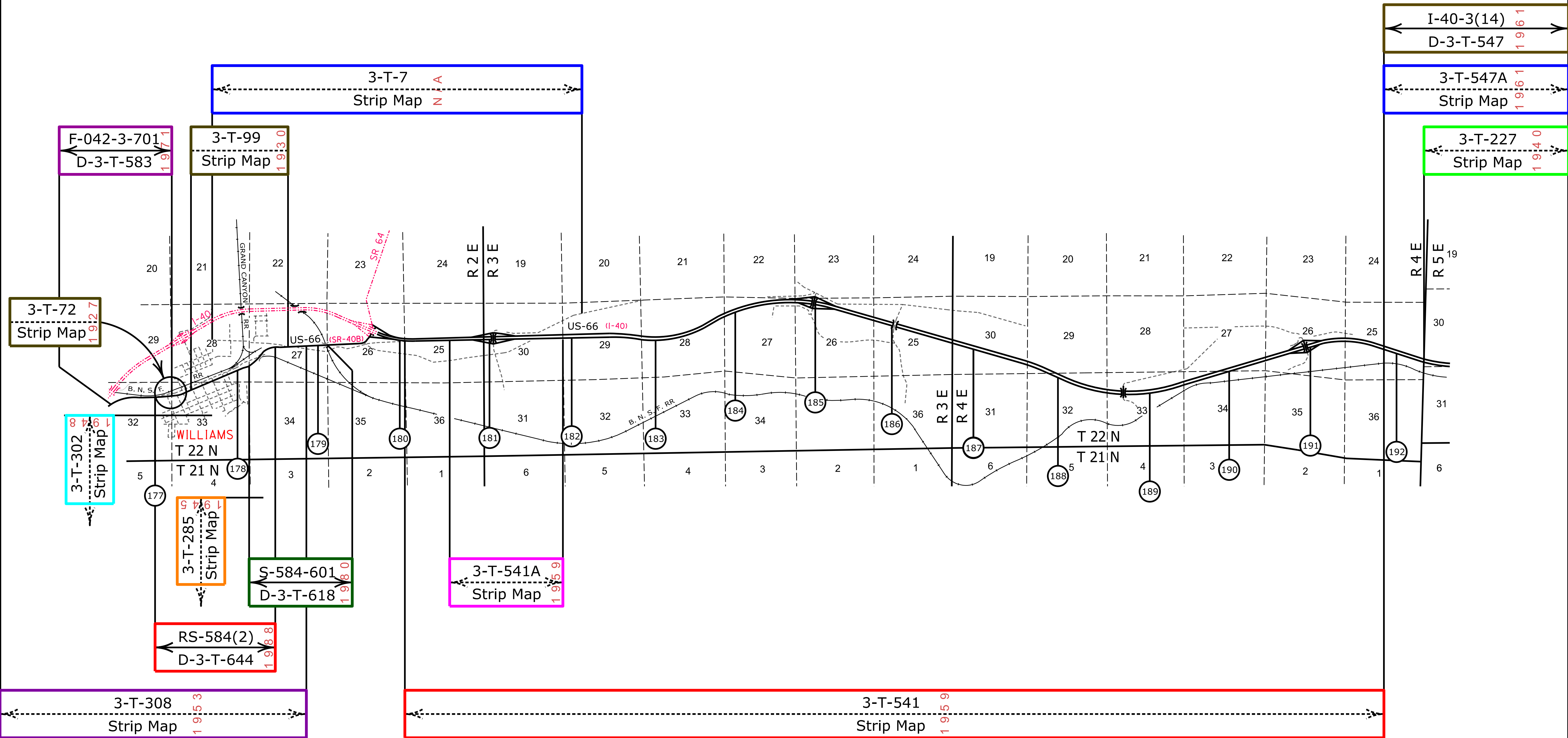
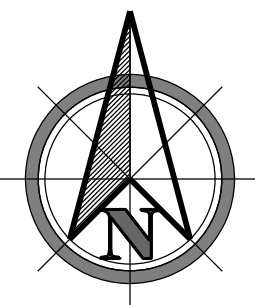
Click in colored box to view Plans/Maps
ⓧ Mile Post Number



| | | |
|--|-------------|--------------------------|
| Right Of Way Index Map | ROUTE US-66 | MILEPOST 161.00 - 176.00 |
| HIGHWAY NAME Ash Fork - Flagstaff Hwy. | | |

11

COCONINO COUNTY



NOTE: Mile Post Approximate for Index purpose only

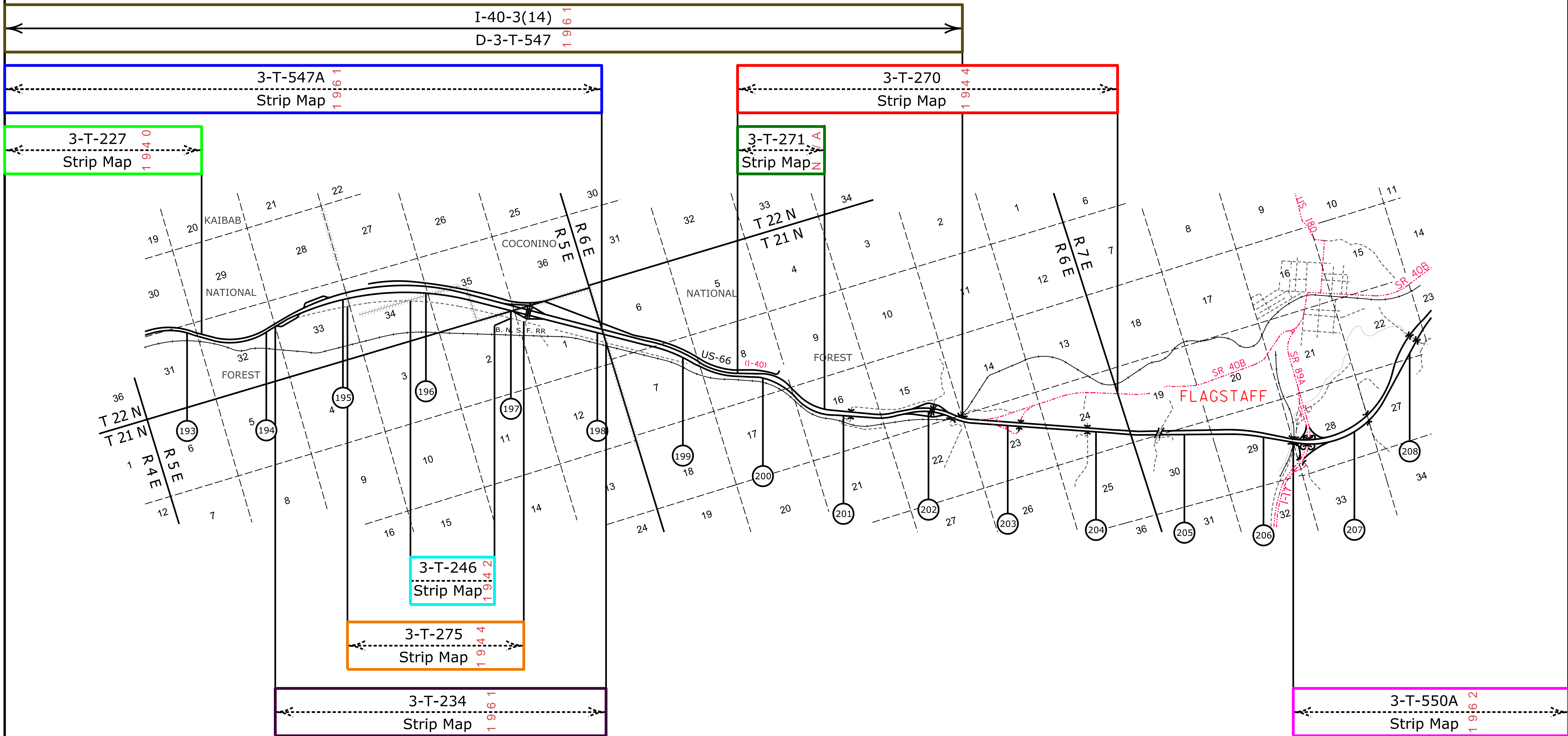
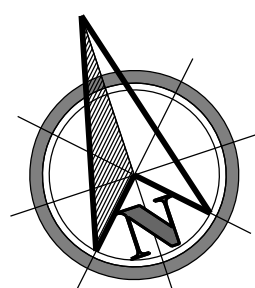
[Contact Us](#)

Click in colored box to view Plans/Maps
 (xx) Mile Post Number



| | | |
|--|-------------|--------------------------|
| Right Of Way Index Map | ROUTE US-66 | MILEPOST 177.00 - 192.00 |
| HIGHWAY NAME Ash Fork - Flagstaff Hwy. | | |

COCONINO COUNTY



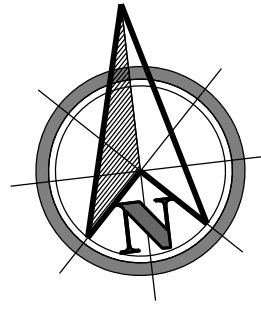
NOTE: Mile Post Approximate for Index purpose only

[Contact Us](#)

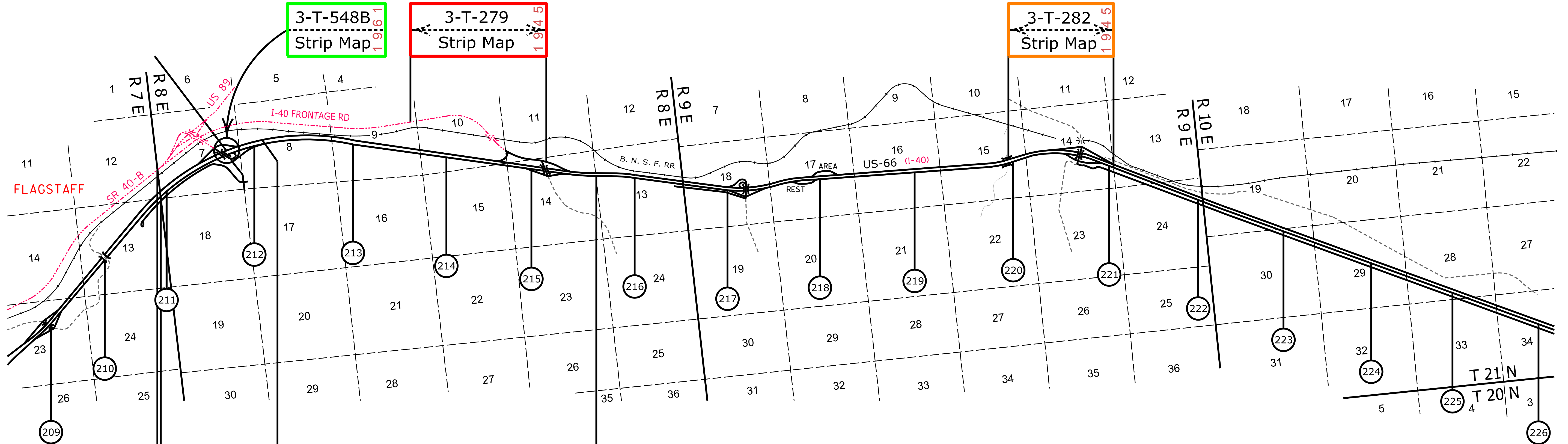
Click in colored box to view Plans/Maps
 (xx) Mile Post Number



| | | |
|---------------------------|-------|-----------------|
| Right Of Way Index Map | ROUTE | MILEPOST |
| | US-66 | 193.00 - 208.00 |
| HIGHWAY NAME | | |
| Ash Fork - Flagstaff Hwy. | | |



COCONINO COUNTY



3-T-550A Strip Map 1 96 2

3-T-548A Strip Map 1 96 2

3-T-548B Strip Map 1 96 1

3-T-279 Strip Map 1 94 5

3-T-282 Strip Map 1 94 5

3-T-251 Strip Map 1 94 3

Contact Us

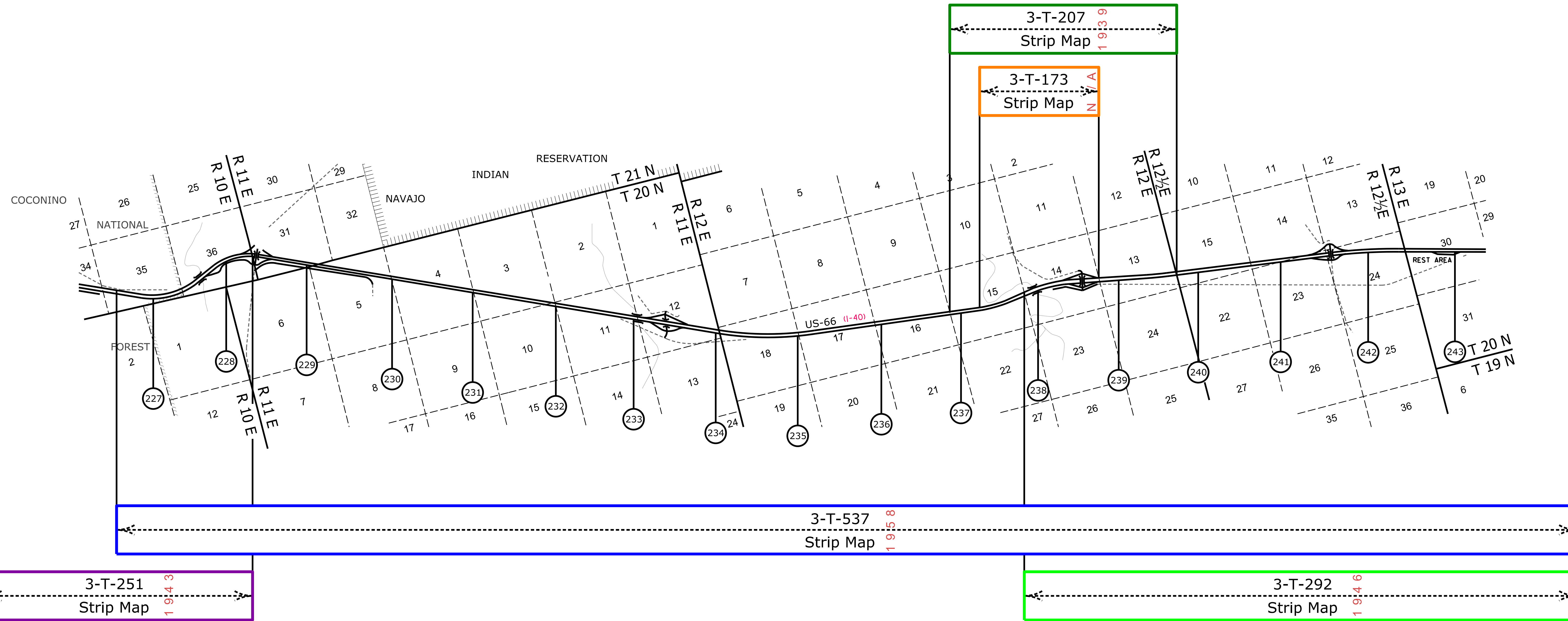
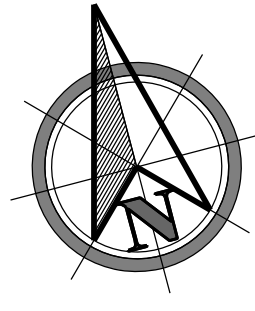
Click in colored box to view Plans/Maps (XX) Mile Post Number

NOTE: Mile Post Approximate for Index purpose only



| | | |
|--|-------------|--------------------------|
| Right Of Way Index Map | ROUTE US-66 | MILEPOST 209.00 - 226.00 |
| HIGHWAY NAME Flagstaff - Holbrook Hwy. | | |

COCONINO COUNTY



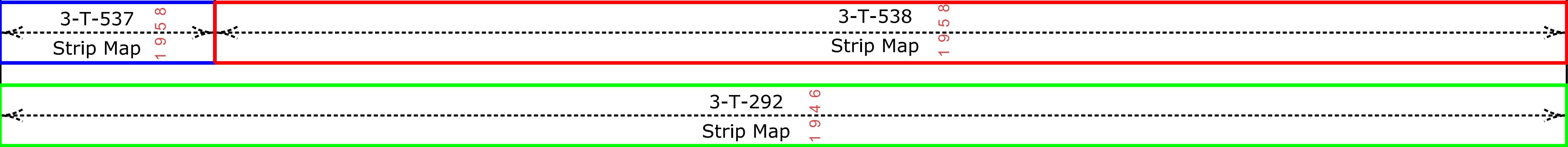
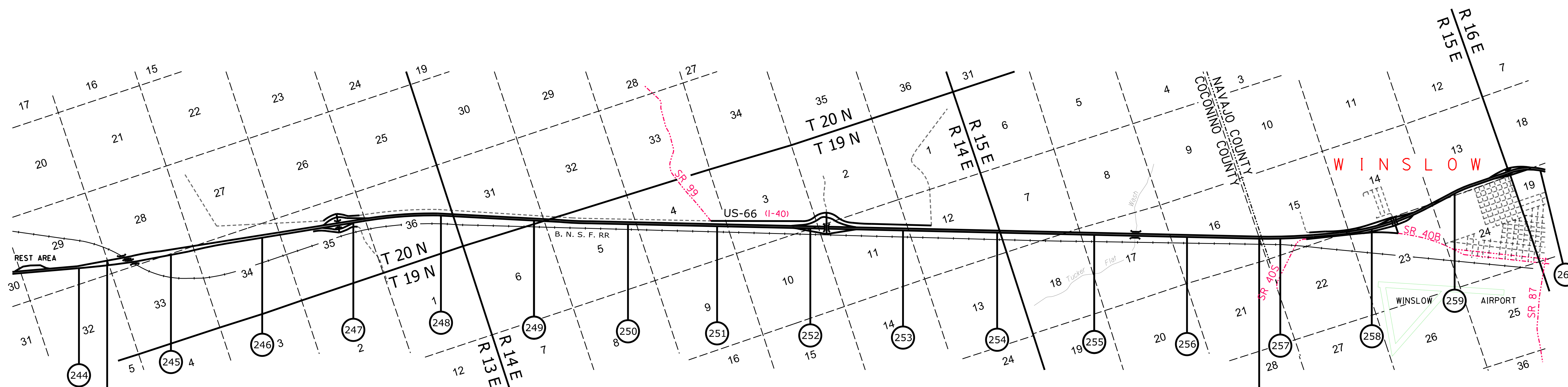
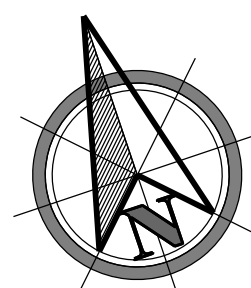
NOTE: Mile Post Approximate for Index purpose only

[Contact Us](#)

Click in colored box to view Plans/Maps
 (xx) Mile Post Number

| | | | | |
|--------------------------|---------------------------|-------------|--------------------------|-------------|
| Right Of Way Section | Right Of Way Index Map | ROUTE US-66 | MILEPOST 227.00 - 243.00 | <h1>15</h1> |
| | Flagstaff - Holbrook Hwy. | | | |

COCONINO COUNTY



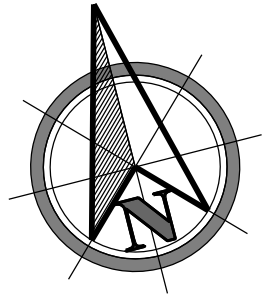
NOTE: Mile Post Approximate for Index purpose only

[Contact Us](#)

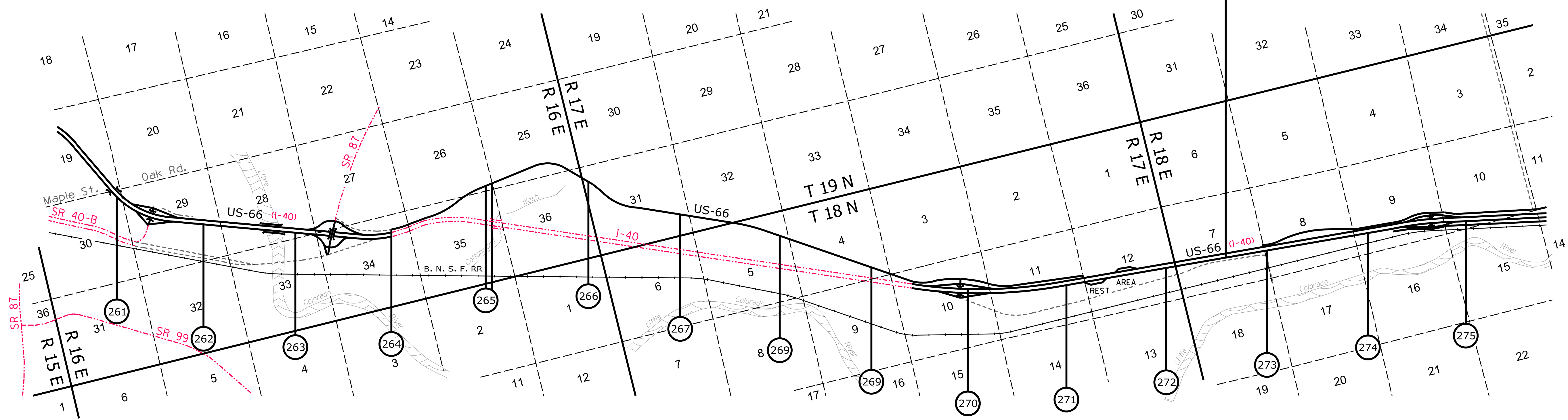
Click in colored box to view Plans/Maps
 (xx) Mile Post Number

| | | | | |
|--------------------------|--|-------------|--------------------------|-------------|
| Right Of Way Section | Right Of Way Index Map | ROUTE US-66 | MILEPOST 244.00 - 260.00 | <h1>16</h1> |
| | HIGHWAY NAME Flagstaff - Holbrook Hwy. | | | |

NAVAJO COUNTY



9-T-154
Strip Map 1 9 4 1



9-T-189
Strip Map 1 9 5 3

NOTE: Mile Post Approximate for Index purpose only

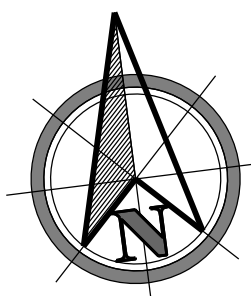
Contact Us

Click in colored box to view Plans/Maps
 (xx) Mile Post Number

| | | | |
|----------------------|---|-------------|--------------------------|
| Right Of Way Section | Right Of Way Index Map | ROUTE US-66 | MILEPOST 261.00 - 275.00 |
| | HIGHWAY NAME Flagstaff - Holbrook Hwy. | | |

17

NAVAJO COUNTY



9-T-154
Strip Map 1 9 4 1

9-T-192
Strip Map 1 9 5 5

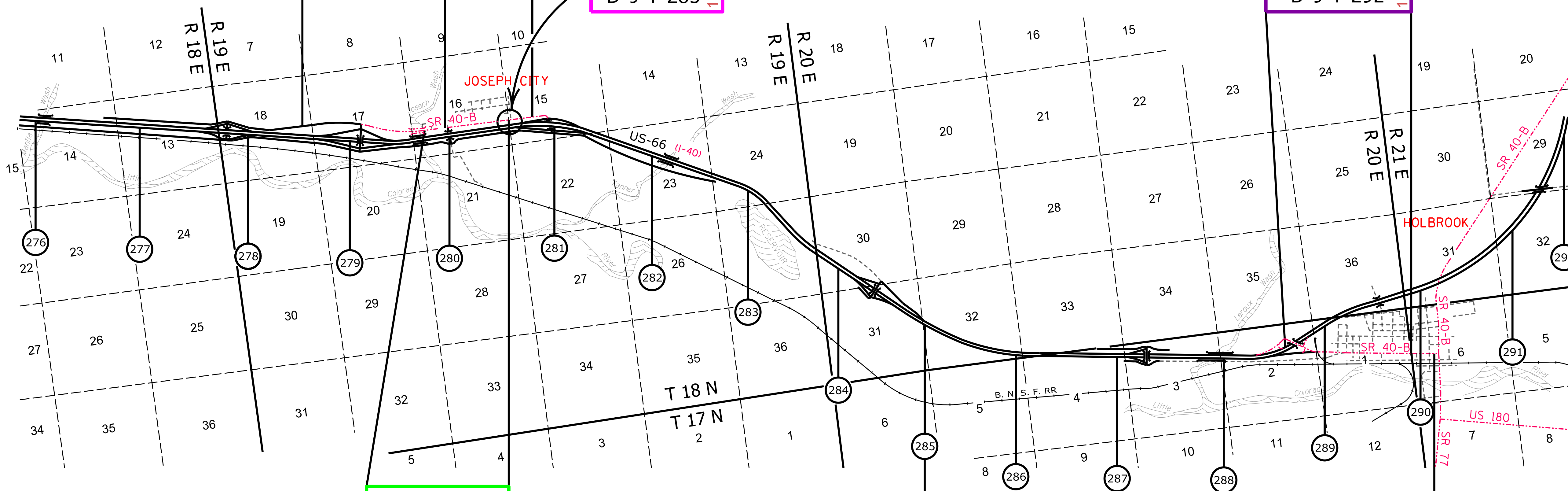
S-589-601
D-9-T-283 1 9 7 7

F-042-4-601
D-9-T-292 1 9 8 1

F-008-4-809
D-9-T-219 1 9 6 4

9-T-180
Strip Map 1 9 5 0

9-T-189
Strip Map 1 9 5 3



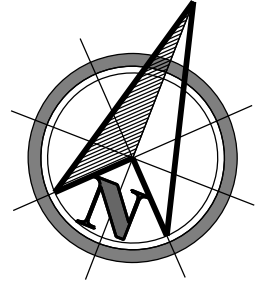
NOTE: Mile Post Approximate for Index purpose only

Contact Us

Click in colored box
to view Plans/Maps
ⓧ Mile Post Number

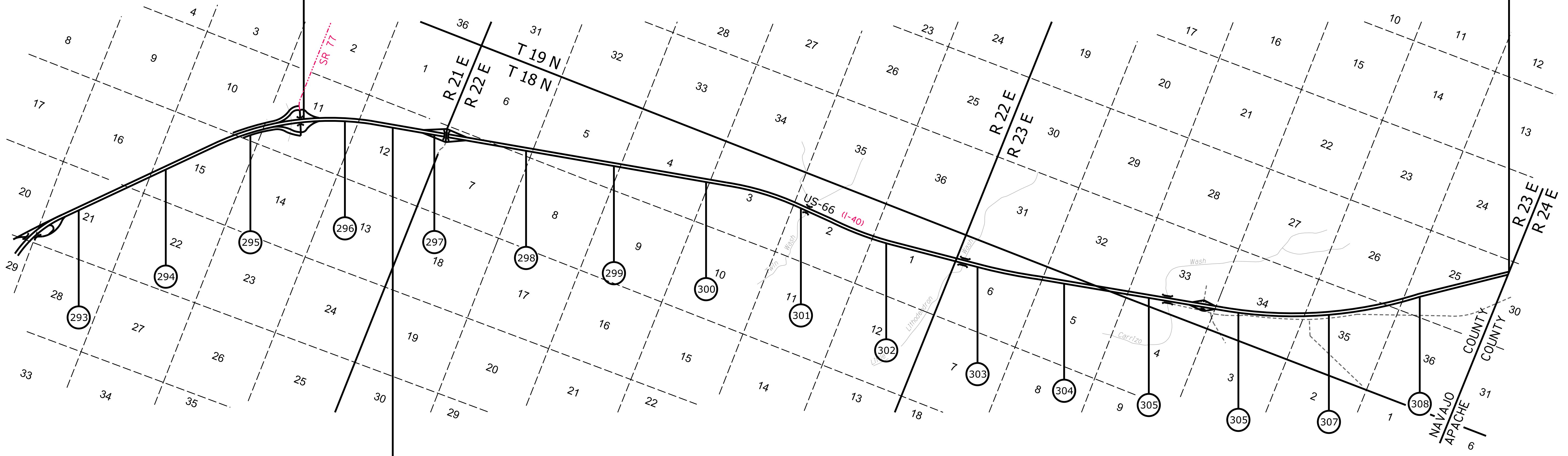


| | | |
|--|-------------|--------------------------|
| Right Of Way Index Map | ROUTE US-66 | MILEPOST 276.00 - 292.00 |
| HIGHWAY NAME Flagstaff - Holbrook Hwy. | | |



NAVAJO COUNTY

9-T-172
Strip Map 1 9 4 6



9-T-187
Strip Map 1 9 5 2

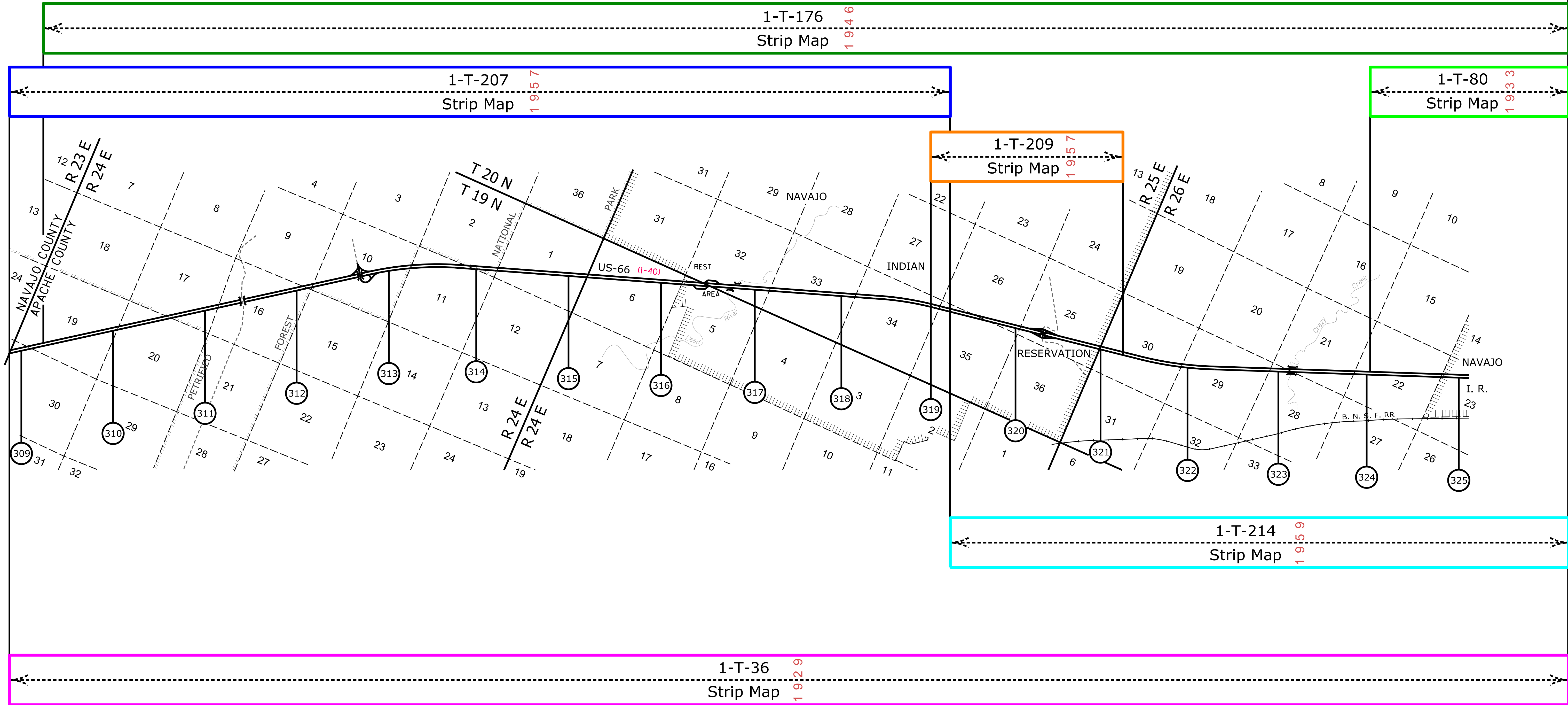
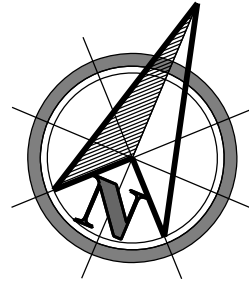
NOTE: Mile Post Approximate for Index purpose only

Contact Us

Click in colored box to view Plans/Maps
(xx) Mile Post Number

| | | | | |
|-------------------------------------|--|-------------|--------------------------|-----------|
| ADOT Right Of Way Section | Right Of Way Index Map | ROUTE US-66 | MILEPOST 293.00 - 308.00 | 19 |
| | HIGHWAY NAME Holbrook - Lupton Hwy. | | | |

APACHE COUNTY



NOTE: Mile Post Approximate for Index purpose only

[Contact Us](#)

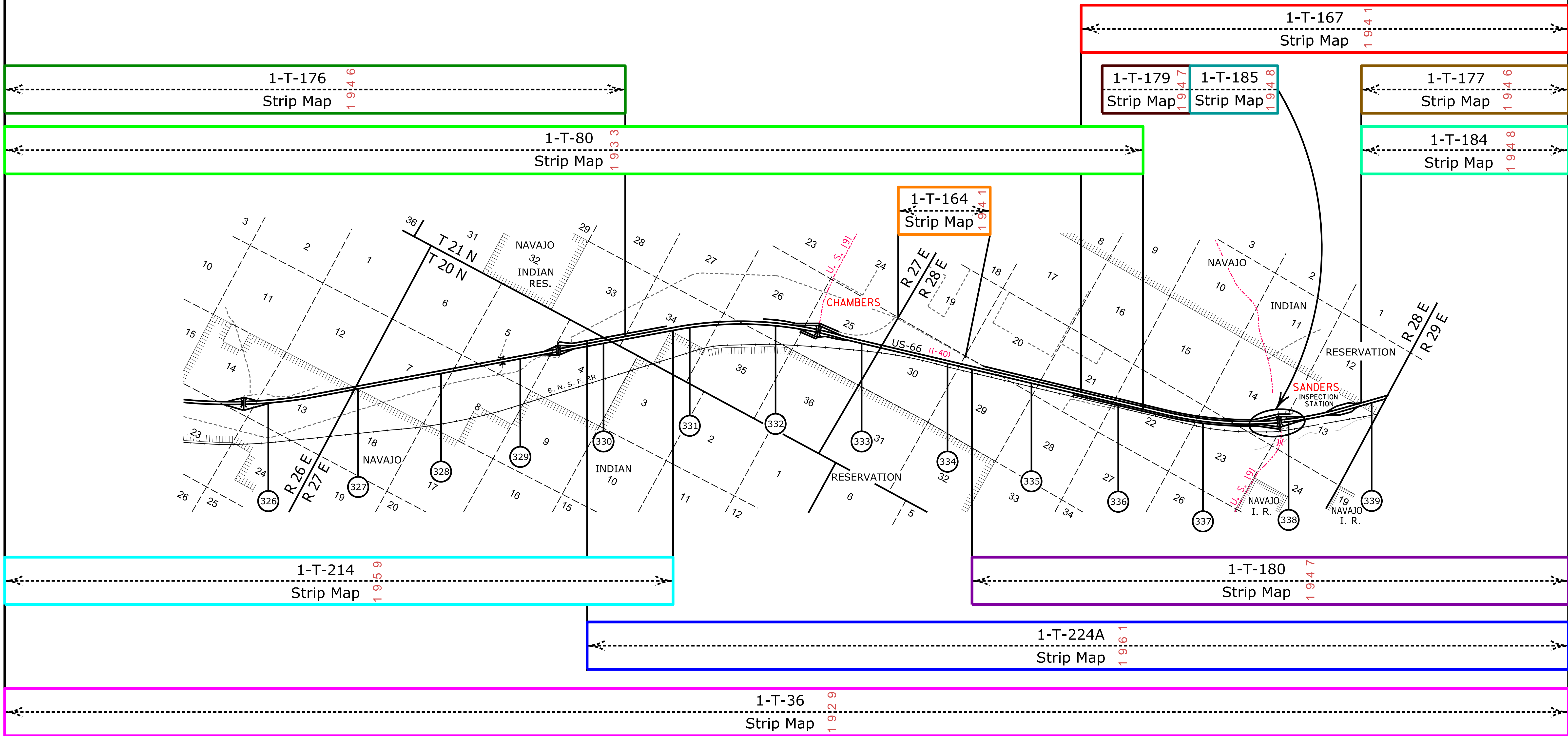
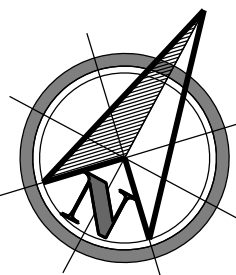
Click in colored box
to view Plans/Maps
ⓧ Mile Post Number



| | | |
|------------------------|-------------|--------------------------|
| Right Of Way Index Map | ROUTE US-66 | MILEPOST 309.00 - 325.00 |
| HIGHWAY NAME | | Holbrook - Lupton Hwy. |

20

APACHE COUNTY



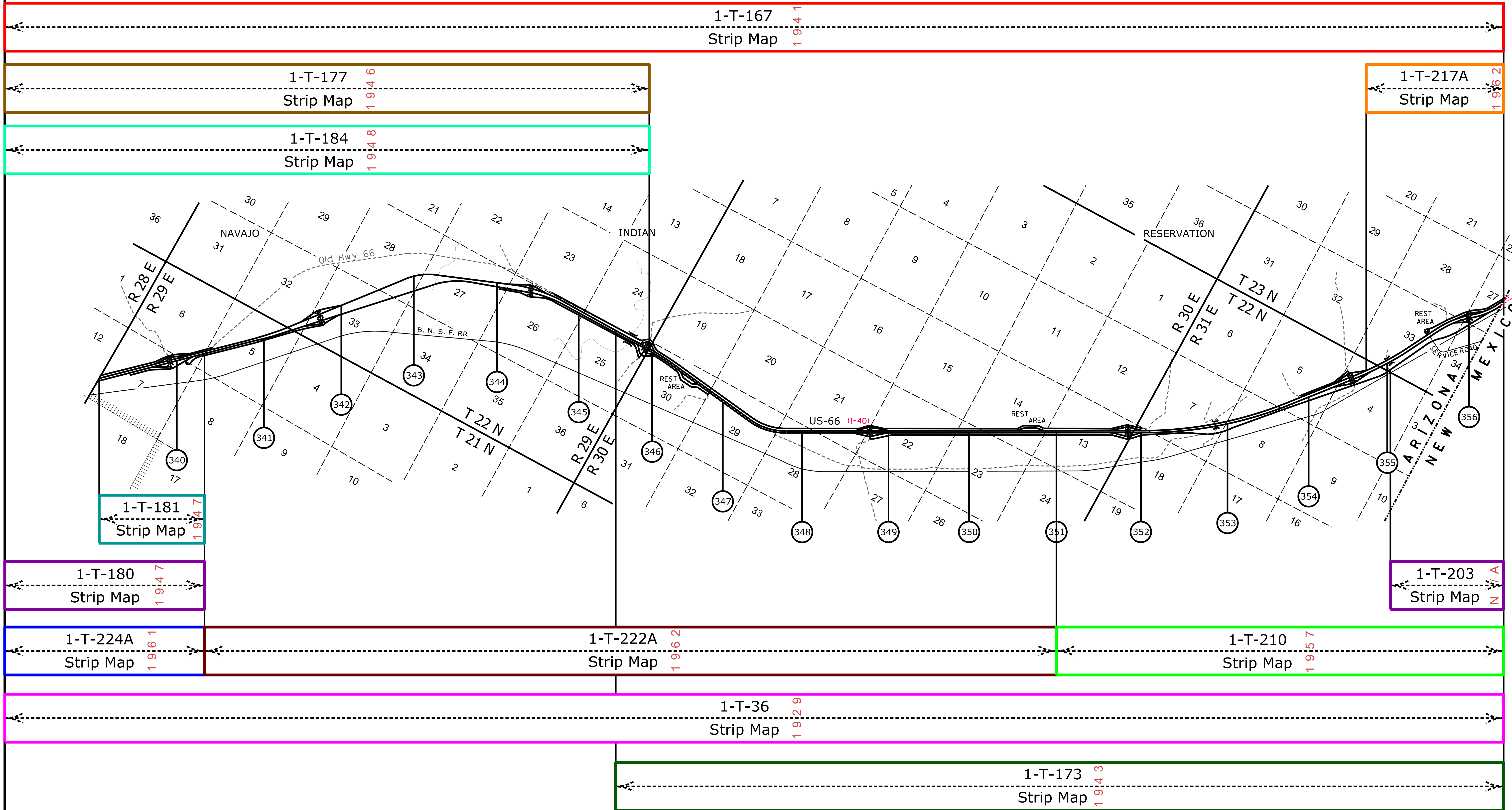
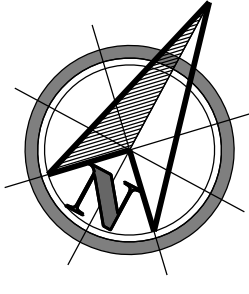
NOTE: Mile Post Approximate for Index purpose only

[Contact Us](#)

Click in colored box to view Plans/Maps
 (xx) Mile Post Number

| | | | | |
|--------------------------|--|-------------|-----------------------|-------------|
| Right Of Way Section | Right Of Way Index Map | ROUTE US-66 | MILEPOST 326.00 - 339 | <h1>21</h1> |
| | Highway Name Holbrook - Lupton Hwy. | | | |

APACHE COUNTY



NOTE: Mile Post Approximate for Index purpose only

[Contact Us](#)

Click in colored box
to view Plans/Maps
(XX) Mile Post Number



| | | |
|------------------------|-------------|------------------------|
| Right Of Way Index Map | ROUTE US-66 | MILEPOST 340.00 - 356 |
| HIGHWAY NAME | | Holbrook - Lupton Hwy. |