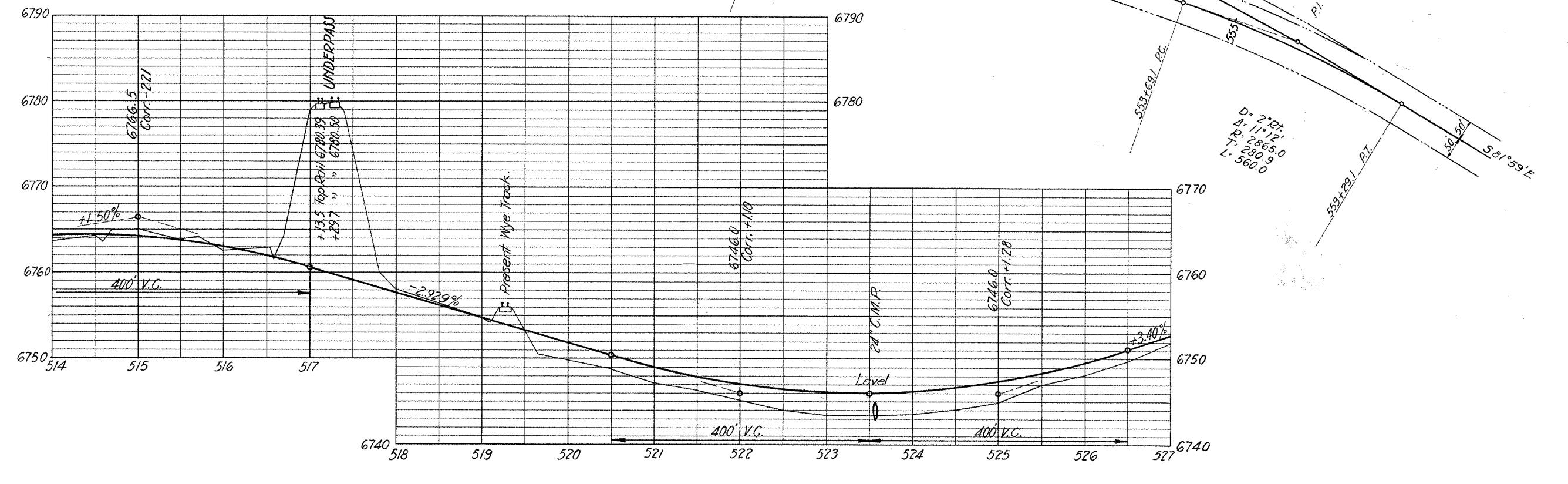


**PROFILE OF PROPOSED WYE TRACK CHANGE**

Scale Hor. 1" = 100'  
Vert. 1" = 10'



**PROFILE OF PROPOSED UNDERPASS.**

Scale Hor. 1" = 100'  
Vert. 1" = 10'

ARIZONA HIGHWAY DEPARTMENT  
ASH FORK-FLAGSTAFF HIGHWAY  
U.S. 66 - F.A.P. 89-C  
**RIGHT OF WAY REQUIRED OVER A.T. & S.F.R.R.**  
TOWN OF WILLIAMS

Oct. 10 - 1930