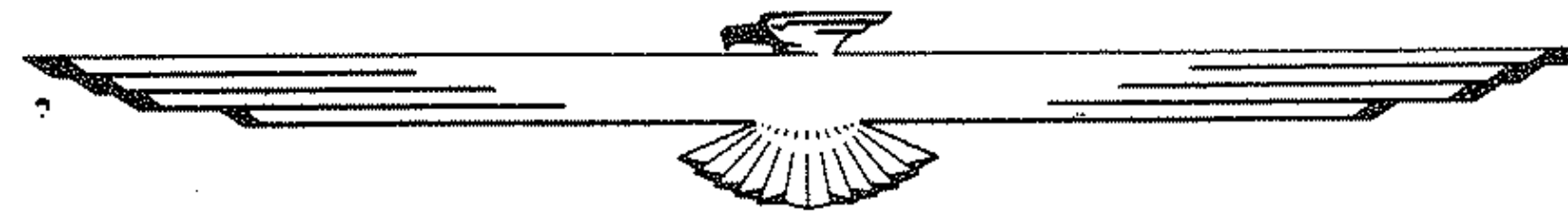


FED. ROAD DIVISION	STATE	PROJECT NUMBER	SHEET NUMBER	TOTAL SHEETS	FINALIZED PLANS
7	ARIZ.	S-358-706	1	17	

DRAWING NUMBER		D-10-T-321	
C.O.	Date	By	Description
0160	4-20-72	Wm	raw closed out

STATE OF ARIZONA
STATE HIGHWAY DEPARTMENT



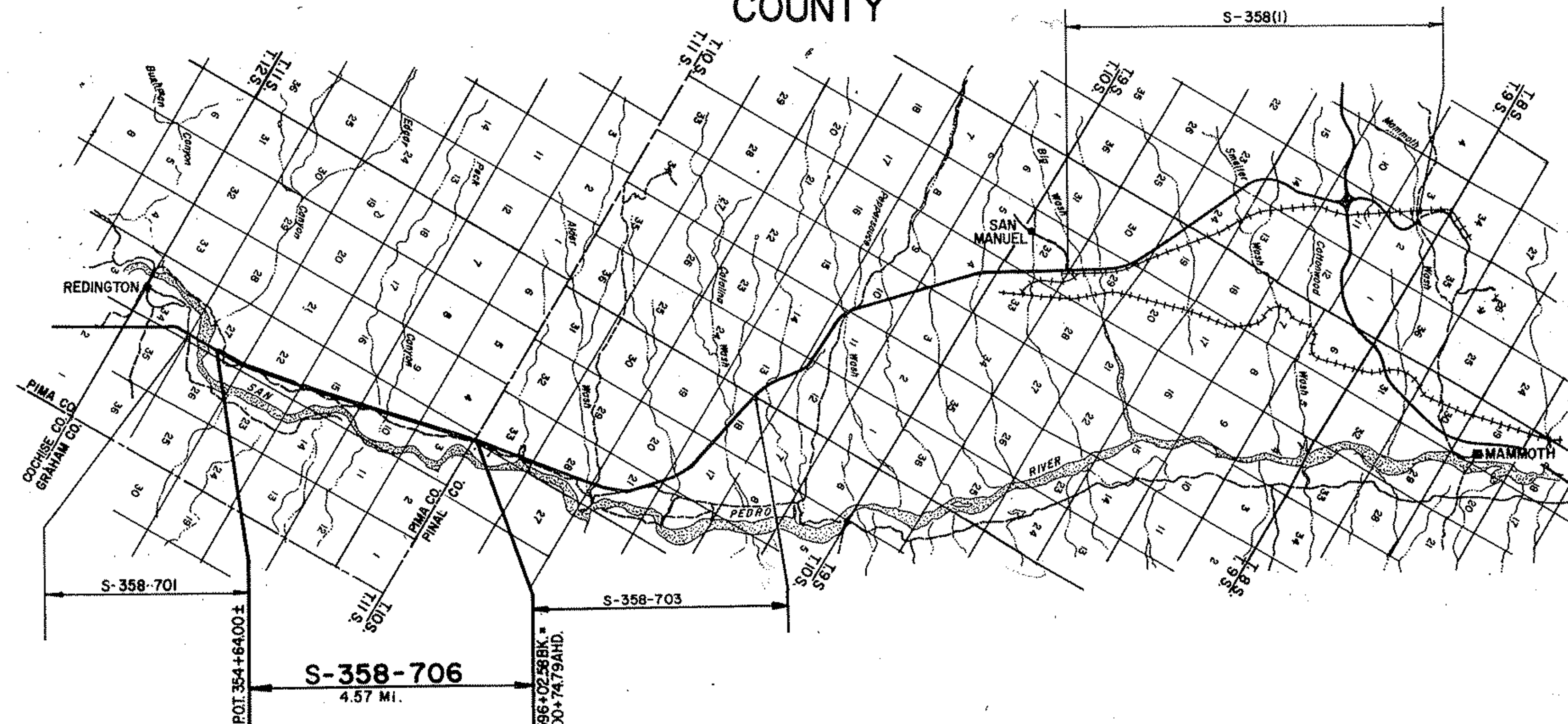
RIGHT OF WAY PLAN OF THE
BENSON - MAMMOTH
STATE HIGHWAY
PROJECT NO. S-358-706

PRINTED

APR 7 1972

R/W PLANS DIV.
P.O. BOX 2100 TUCSON, ARIZONA

PIMA
COUNTY



RW/PLANS
FILE SET

RW/PLANS
FILE SET

HIGHW. CENTER LINE	(New)	(Existing)
HIGHWAY R/W LINE	(New)	(Existing)
CONTROLLED ACCESS	(New)	(Existing)
R. R. R/W COMMON TO HIGHWAY R/W	(Existing)	
R. R. R/W LINE		
TOWNSHIP AND RANGE LINE		
SECTION LINE		
1/4 LINE OR MID-SECTION LINE		
1/16 LINE		
PROPERTY LINE	(not part of a Subdivision)	
SUBDIVISION OR LOT LINE		
ORIGINAL LOT LINE		
STATE AND NATIONAL BOUNDARIES		
COUNTY LINE		
CITY LIMITS		
LAND GRANTS BOUNDARIES		

CONVENTIONAL SIGNS

FOREST, NATIONAL MONUMENTS, MILITARY BASES AND INDIAN RESERVATION	
SURVEY MEANDER LINE	
NEW R/W CONTROL POINT	
EXISTING R/W MARKER	
PARCEL NUMBER	
RAILROAD TRACK	
POWER LINE	
POWER TRANSMISSION LINE	
TELEPHONE LINE	
COMBINATION TELEPHONE AND POWER LINE	
UNDERGROUND TELEPHONE CABLE	
WATER LINE	
GAS LINE	
SEWER LINE	
STORM DRAIN	
CHAIN LINK FENCE	

BARBED WIRE FENCE (coil and type)	
STREET LIGHT	
WATER METER	
WATER VALVE	
DOWN GUY	
FIRE HYDRANT	
GAS METER	
GAS VALVE	
MANHOLE (existing)	
ROAD (existing)	
PROPERTY ANCHOR BARS	
PROPERTY LIMITS ARROWS	
CANAL, CHANNEL OR DITCH	
BRIDGE	
BOX CULVERTS	
CATTLE GUARD	
RIVER	
PIPE CULVERTS	
DYKE	

Approved in accordance with Roadway Plans

Joseph B. Meier 8-20-70
DEPUTY STATE ENGINEER DATE

ARIZONA STATE HIGHWAY COMMISSION
Approved for Right of Way Acquisition in accordance with Resolution Number 69-101 dated 11-4-69
William N. Price State Highway Engineer

Deputy State Engineer 8-24-70
CHIEF DEPUTY STATE ENGINEER DATE

U. S. DEPARTMENT OF TRANSPORTATION
FEDERAL HIGHWAY ADMINISTRATION
BUREAU OF PUBLIC ROADS
Approved:

DIVISION ENGINEER DATE

REDUCED SIZE
DO NOT SCALE

**BENSON-MAMMOTH HIGHWAY
REDINGTON BRIDGE-PINAL COUNTY LINE SEC.
PIMA COUNTY**



REVISIONS				PROJECT NO.	3-358-706
CO No.	DATE	BY	DESCRIPTION	DRAWING NO.	D-10-T-321
3174	1-19-72	D.G.M.	Changed Drawing Number & Added Note.	SHEET NO.	2 of 17
3167	3-8-72	GH	Add Parcel No 10-262-A, 10-263-A & 10-263-A-L-1	DRAWN BY	J.G.
1160	4-20-72	H.M.	Change 10-265 Area from T.C.E. to Driveway Easement.	DATE COMP.	8-4-70
			Project C10523 247	SCALE	
				CONSULTANT	ENG. CORP OF AMERICA

CHECKED BY: Dennis G. Sp... 28

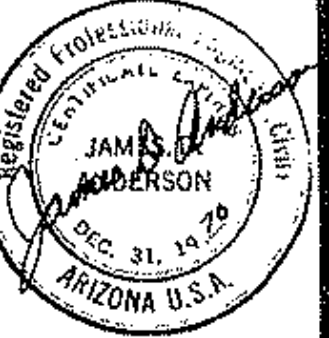
HARD COPY

NOTE:
* As Per Letter from *
C. Clark, dated
12-12-75, these parcels
are cancelled and all
files pertaining to *
SAME IS CLOSED.

PARCEL NUMBER	OWNER	DESCRIPTION	TOTAL AREA	AREA		EASEMENT AREA	REMAINDER		SHEET NUMBER	COMMISSION APPROVAL	TYPE & DATE OF INSTRUMENT	RECORDED			
				GROSS INCLUDING EXISTING R/W	NET EXCLUDING EXISTING R/W		LEFT	RIGHT				DATE	BOOK	PAGE	
				REQUIRED	REQUIRED										
10-262	Floyd & Lavita Bingham h/w	Pt. E 1/2 NE 1/4 Sec. 27 T11S. R. 18E.	118.5Ac.	12.4 Ac.	11.8 Ac.	0.14c.	82.7 Ac.	43.3 Ac.	445	11-19-71	W.D.				
		Pt. E 1/2 E 1/2 Sec. 22 T11S. R. 18E.	484.2Ac.	21.6 Ac.	18.6 Ac.	T.C.E. Only	357.2 Ac.	105.4 Ac.	5,647		9-3-71		12-31-71	4156	50-51
* 10-263	State of Arizona (State Land Department)	Pt. NW 1/4 NE 1/4 Sec. 22 T11S. R18E	160.0Ac.		3.4 Ac.		155.7 Ac.	0.9 Ac.	7						
L-1	Grazing Lease (G115-L & G115-N) to: Floyd Bingham	Pt. NW 1/4 NE 1/4 Sec. 22 T11S. R18E	160.0Ac.						7		SEE				
* 10-264	State of Arizona (State Land Department)	Pt. NW 1/4 SE 1/4 Sec. 15 T11S. R18E	400.0Ac.	125 Ac.	11.6 Ac.	T.C.E. Only	367.9 Ac.	19.6 Ac.	748						
L-1	Grazing Lease (G115-L & G115-N) to: Floyd Bingham	Pt. NW 1/4 SE 1/4 Sec. 15 T11S. R18E	400.0Ac.						748			NOTE			
10-265	Ardell W. & Geraldine Bingham h/w	Pt. W 1/2 NE 1/4 Sec. 15 T11S. R18E	67.8Ac.	12.8 Ac.	8.1 Ac.	0.6 Ac.	33.9 Ac.	21.1 Ac.	8,941	11-19-71	W.D.		12-22-71	4147	585-586
10-266	Floyd & Lavita Bingham h/w	Pt. SE 1/4 SW 1/4 Sec. 10 T11S. R18E	40.0Ac.	0.6 Ac.	0.5 Ac.	T.C.E. Only	39.4 Ac.	102.8 Ac.	9	11-19-71	W.D. & ESMT		12-31-71	4156	49
* 10-267	State of Arizona (State Land Department)	Pt. E 1/2 NW 1/4 & Pt. NE 1/4 SW 1/4 Sec. 10 T11S. R18E	280.0Ac.	18.1 Ac.	17.2 Ac.	T.C.E. Only	225.7 Ac.	36.2 Ac.	9,104		SEE				
L-1	Grazing Lease (G115-N) to: Floyd Bingham	Pt. NE 1/4 SW 1/4 Sec. 10 T11S. R18E	120.0Ac.						9410						
L-2	Grazing Lease (G1589-N) to: Tucson Tallow Co., Inc.	Pt. E 1/2 NW 1/4 Sec. 10 T11S. R18E	160.0Ac.						10411			NOTE			
10-268	Tucson Tallow Co., Inc.	Pt. W 1/2 Sec. 3 T11S. R18E	493.9Ac.	24.0Ac.	22.1 Ac.	0.5 Ac.	86.7 Ac.	382.7 Ac.	11412	11-19-71	W.D. & ESMT		1-7-72	4161	645-647
* 10-269	State of Arizona (State Land Department)	Pt. SW 1/4 SW 1/4 Sec. 3 T11S. R18E	1,742,400 Sq. Ft.		30 Sq. Ft.		1,742,370 Sq. Ft.		11		SEE				
L-1	Grazing Lease (G1589-N) to: Tucson Tallow Co., Inc.	Pt. SW 1/4 SW 1/4 Sec. 3 T11S. R18E	1,742,400 Sq. Ft.						11			NOTE			
10-262-A	Floyd & Lavita Bingham h/w	Pt. E 1/2 NE 1/4 Sec. 22 T11S. R18E	484.2Ac.			0.76 Ac. DE.			7	12-15-72	ESMT		1-2673	4429	916-917
* 10-263-A	State of Arizona (State Land Department)	Pt. NW 1/4 NE 1/4 Sec. 22 T11S. R18E	160.0Ac.			0.10 Ac. DE.			7		SEE				
L-1	Grazing Lease (G115-L & G115-N) to: Floyd Bingham	Pt. NW 1/4 NE 1/4 Sec. 22 T11S. R18E	160.0Ac.			0.10 Ac. DE.			7			NOTE			

BENSON-MAMMOTH HIGHWAY
REDINGTON BRIDGE - PINAL COUNTY LINE SEC.
PIMA COUNTY

REVISIONS				PROJECT NO.
G.O. No.	DATE	BY	DESCRIPTION	5-358-706
3174	1-20-72	D.G.M.	Changed Drawing Number & Added Note.	DRAWING NO. D-10-T-321
3167	3-10-72	G.H.	Deleted T.C.E. P.O.T. 389+00, 515+00 & P.O.C. 582+	SHEET NO. 3 of 17
10160	4-20-88	J.L.W.	Added New Drainage Ease. P.O.T. 424+00 & 464+00	DRAWN BY Phil Hamel
			Project Closed Out	DATE COMP. 8-4-70
				SCALE See Below
				CONSULTANT ENG. CORP OF AMERICA



CHECKED BY: Dennis S. Sp...
HARD COPY: 6921 MI

CURVE DATA
 Total Curve
 $\Delta = 39^{\circ}26'48''$ Lt.
 $RIO = 1435.02'$
 $T = 664.41'$
 $L = 1286.17'$
 Main Curve
 $\Delta = 27^{\circ}26'48''$ Lt.
 $D = 4^{\circ}00'00''$
 $R = 1432.40'$
 $L = 686.17'$
 Spiral
 $\alpha = 1/13$
 $\Delta = 6^{\circ}00'$
 $b = 149.95'$
 $L = 30000'$

Curve Data
 $\Delta = 7^{\circ}46'16''$ Lt.
 $D = 1^{\circ}00'00''$
 $R = 5729.58'$
 $T = 389.15'$
 $L = 777.11'$

Curve Data
 $\Delta = 1^{\circ}56'23''$ Lt.
 $D = 0^{\circ}15'00''$
 $R = 22918.32'$
 $T = 387.98'$
 $L = 775.89'$

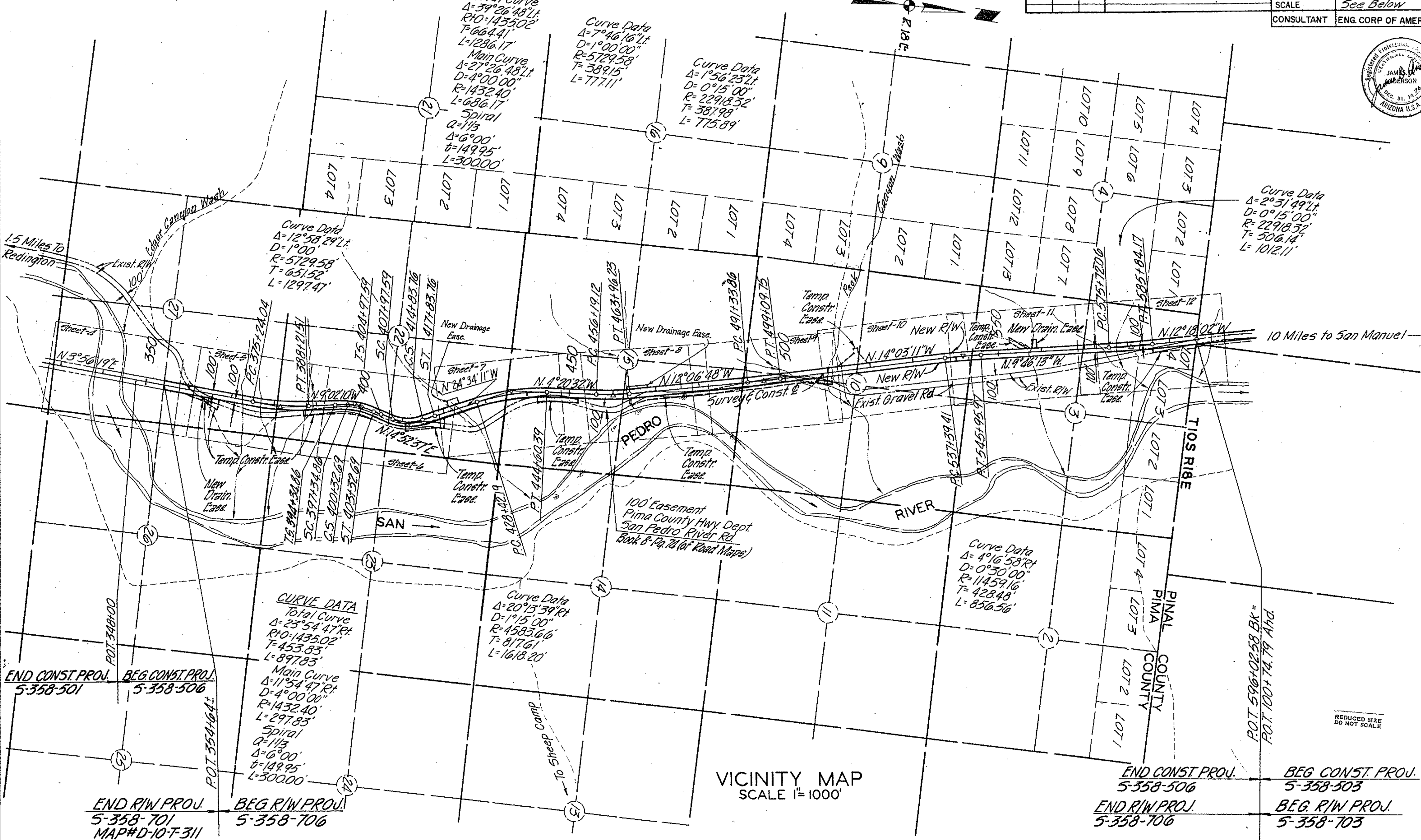
Curve Data
 $\Delta = 2^{\circ}31'49''$ Lt.
 $D = 0^{\circ}15'00''$
 $R = 22918.32'$
 $T = 506.14'$
 $L = 1012.11'$

Curve Data
 $\Delta = 12^{\circ}58'29''$ Lt.
 $D = 1^{\circ}00'$
 $R = 5729.58'$
 $T = 651.52'$
 $L = 1297.47'$

Curve Data
 $\Delta = 4^{\circ}16'58''$ Rt.
 $D = 0^{\circ}30'00''$
 $R = 11459.16'$
 $T = 428.48'$
 $L = 856.56'$

CURVE DATA
 Total Curve
 $\Delta = 23^{\circ}54'47''$ Rt.
 $RIO = 1435.02'$
 $T = 453.83'$
 $L = 897.83'$
 Main Curve
 $\Delta = 11^{\circ}54'47''$ Rt.
 $D = 4^{\circ}00'00''$
 $R = 1432.40'$
 $L = 297.83'$
 Spiral
 $\alpha = 1/13$
 $\Delta = 6^{\circ}00'$
 $b = 149.95'$
 $L = 30000'$

Curve Data
 $\Delta = 20^{\circ}15'39''$ Rt.
 $D = 1^{\circ}15'00''$
 $R = 4583.66'$
 $T = 817.61'$
 $L = 1618.20'$



END CONST. PROJ. 5-358-501
 BEG. CONST. PROJ. 5-358-506

END RIW PROJ. 5-358-701
 MAP# D-10-T-311

BEG RIW PROJ. 5-358-706

VICINITY MAP
 SCALE 1" = 1000'

END CONST. PROJ. 5-358-506
 BEG. CONST. PROJ. 5-358-503
 END RIW PROJ. 5-358-706
 BEG. RIW PROJ. 5-358-703

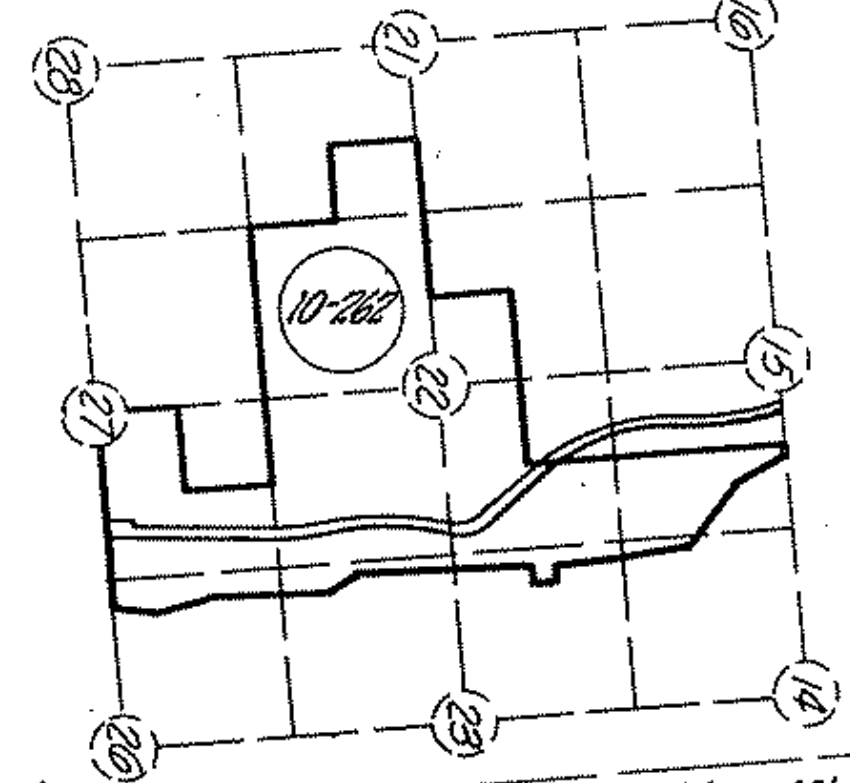
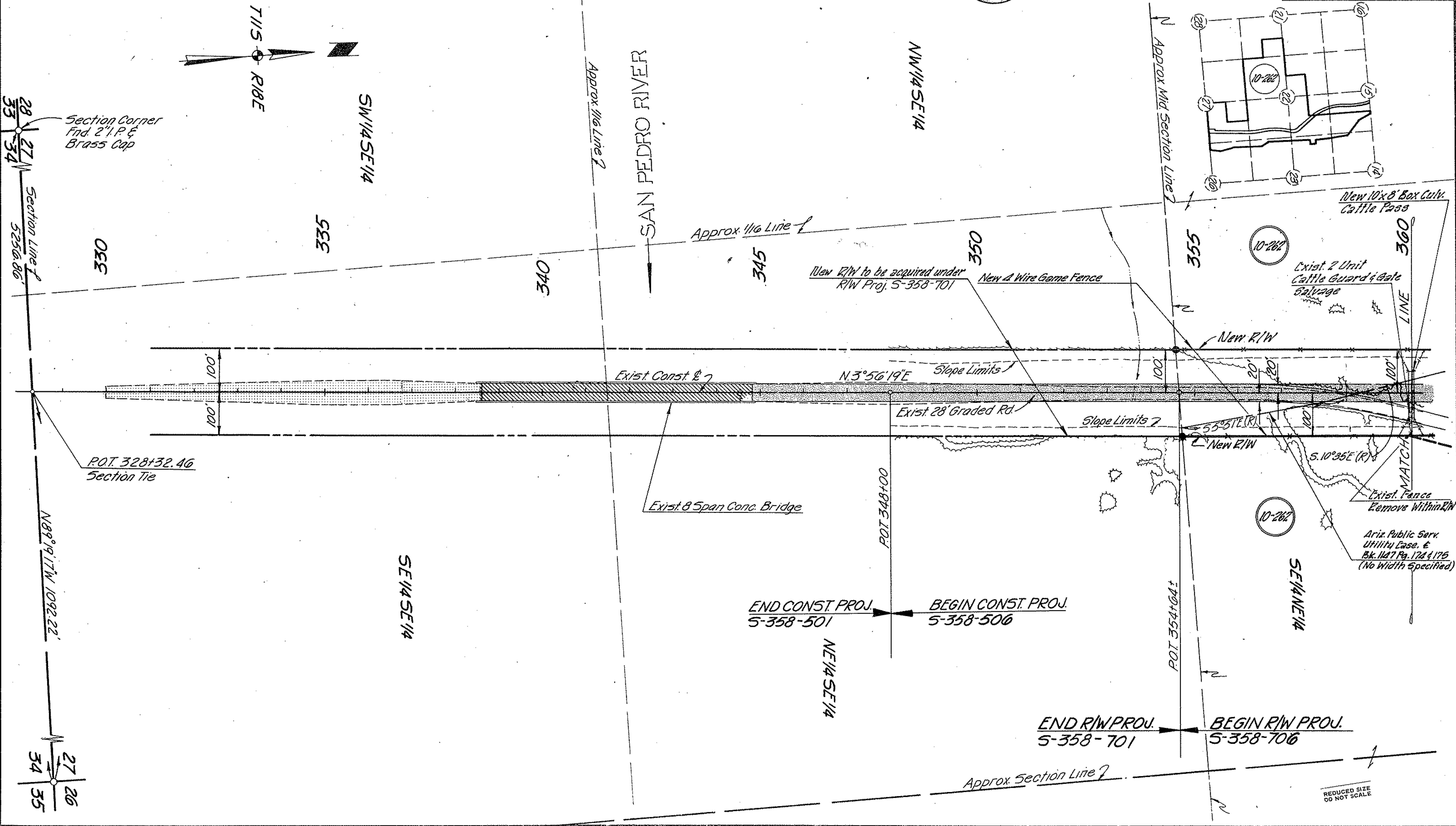
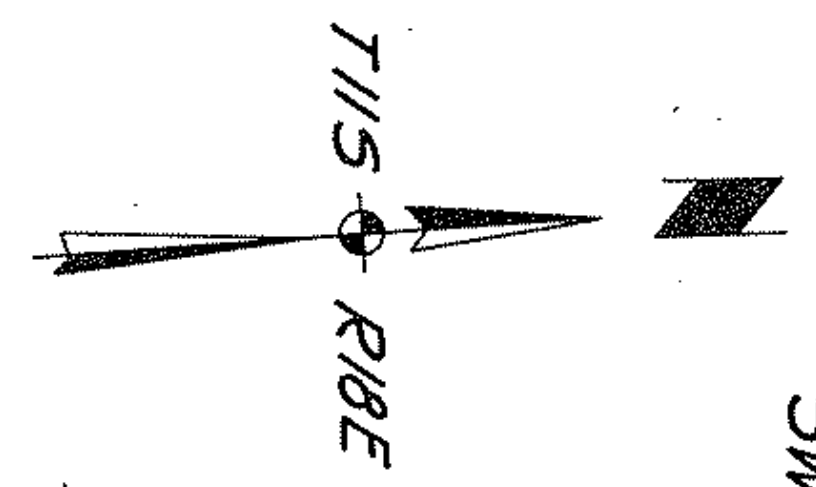
REDUCED SIZE
DO NOT SCALE

**BENSON-MAMMOTH HIGHWAY
REDINGTON BRIDGE-PINAL COUNTY LINE SEC.
PIMA COUNTY**



REVISIONS				PROJECT NO.
G.O. No.	DATE	BY	DESCRIPTION	5-358-706
3174	1-20-72	D.G.M.	Changed Drawing Number & Added Note.	DRAWING NO. D-10-T-321
10160	4-20-88	J.H.H.	Project Closed 1988	SHEET NO. 4 of 17
				DRAWN BY P.U.H.
				DATE COMP. 8-4-70
				SCALE 1"=100'
				CONSULTANT ENG. CORP. OF AMERICA

CHECKED BY: [Signature] HARD COPY: 0921 MI



New 10x8 Box Culv. Cattle Pass
Exist. 2 Unit Cattle Guard & Gate Salvage
New R/W
Slope Limits 20'
55°51'E (R)
S. 10°35'E (R)
Exist. Fence Remove Within R/W
Ariz. Public Serv. Utility Case, & Bk. 1147 Pg. 172 & 176 (No Width Specified)

END CONST. PROJ. 5-358-501
BEGIN CONST. PROJ. 5-358-506
END R/W PROJ. 5-358-701
BEGIN R/W PROJ. 5-358-706

REDUCED SIZE DO NOT SCALE

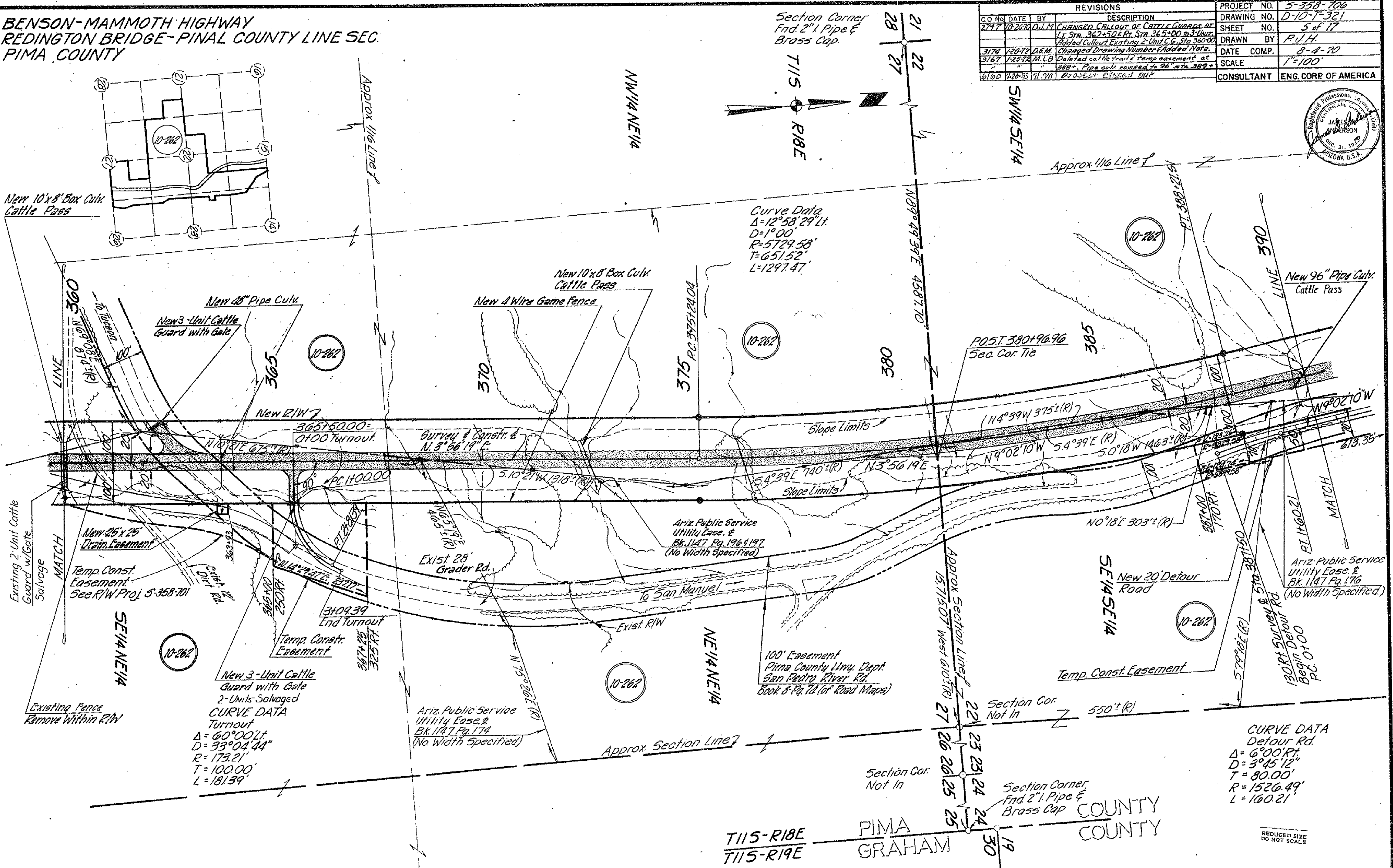
**BENSON-MAMMOTH HIGHWAY
REDINGTON BRIDGE-PINAL COUNTY LINE SEC.
PIMA COUNTY**

REVISIONS			PROJECT NO.	5-358-706
C.O. NO.	DATE	BY	DRAWING NO.	D-10-T-321
2747	10-26-70	D.J.M.	SHEET NO.	5 of 17
			DRAWN BY	R.U.H.
3174	1-20-72	D.E.M.	DATE COMP.	8-4-70
3187	7-25-72	M.L.B.	SCALE	1"=100'
6160	1-20-83	H.H.H.	CONSULTANT	ENG. CORP. OF AMERICA



CHECKED BY: James W. Anderson

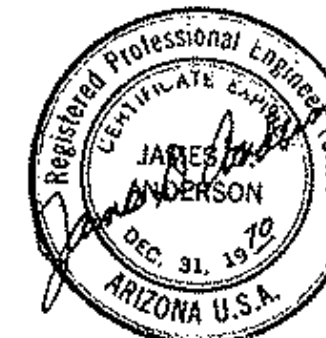
HARD COPY: 0921MI



REDUCED SIZE
DO NOT SCALE

**BENSON-MAMMOTH HIGHWAY
REDINGTON BRIDGE-PINAL COUNTY LINE SEC.
PIMA COUNTY**

REVISIONS				PROJECT NO.	5-358-706
G.O. No.	DATE	BY	DESCRIPTION	DRAWING NO.	D-10-T-321
2797	10-26-72	D.J.M.	Changed Callout & Unit CATTLE GUARDS To 3 Units, L & R, Sta. 412+00	SHEET NO.	6 of 17
3174	1-20-72	D.E.M.	Changed Drawing Number & Added Note.	DRAWN BY	P.J.H.
3167	1-25-72	M.L.B.	Added New Water Lin. of sta. 405+00, deleted cattle guards & turnouts, 1 curve data P.O.T. 407, add 76" Pipe Culv. 1177+00 Sta. 379.5	DATE COMP.	8-4-70
6160	4-23-72	J.W.M.	Project Closed out	SCALE	1"=100'
				CONSULTANT	ENG. CORP. OF AMERICA



CHECKED BY: Dennis C. Sp... 83

HARD COPY 6927.MI

CURVE DATA
 Total Curve
 $\Delta = 39^\circ 26' 48''$ L.
 $RHO = 1435.02'$
 $T = 664.41'$
 $L = 1286.17'$
 Main Curve
 $\Delta = 27^\circ 26' 48''$
 $D = 4^\circ 00' 00''$
 $R = 1432.40'$
 $L = 686.17'$
 Spiral
 $a = 1/13$
 $\Delta = 6^\circ 00' 00''$
 $t = 149.95'$
 $L = 300.00'$

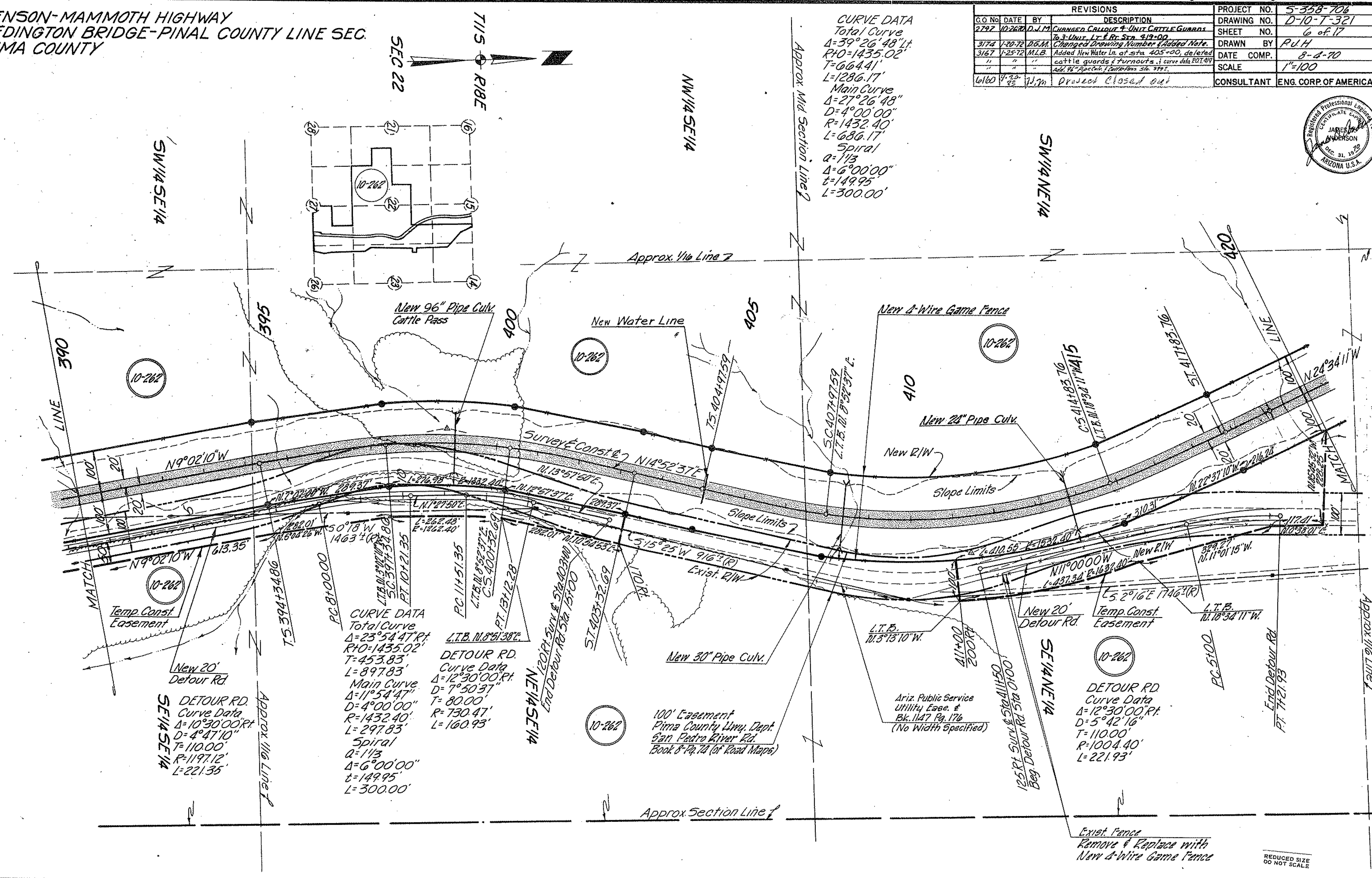
CURVE DATA
 Total Curve
 $\Delta = 23^\circ 54' 47''$ R.
 $RHO = 1435.02'$
 $T = 453.83'$
 $L = 897.83'$
 Main Curve
 $\Delta = 11^\circ 54' 47''$
 $D = 4^\circ 00' 00''$
 $R = 1432.40'$
 $L = 297.83'$
 Spiral
 $a = 1/13$
 $\Delta = 6^\circ 00' 00''$
 $t = 149.95'$
 $L = 300.00'$

DETOUR RD.
 Curve Data
 $\Delta = 12^\circ 30' 00''$ R.
 $D = 5^\circ 42' 16''$
 $T = 110.00'$
 $R = 1004.40'$
 $L = 221.93'$

100' Easement
 Pima County Hwy. Dept.
 San Pedro River Rd.
 Book 8 Pg. 1A (of Road Maps)

Ariz. Public Service
 Utility Easement
 Bk. 1147 Pg. 176
 (No Width Specified)

DETOUR RD
 Curve Data
 $\Delta = 12^\circ 30' 00''$ R.
 $D = 5^\circ 42' 16''$
 $T = 110.00'$
 $R = 1004.40'$
 $L = 221.93'$



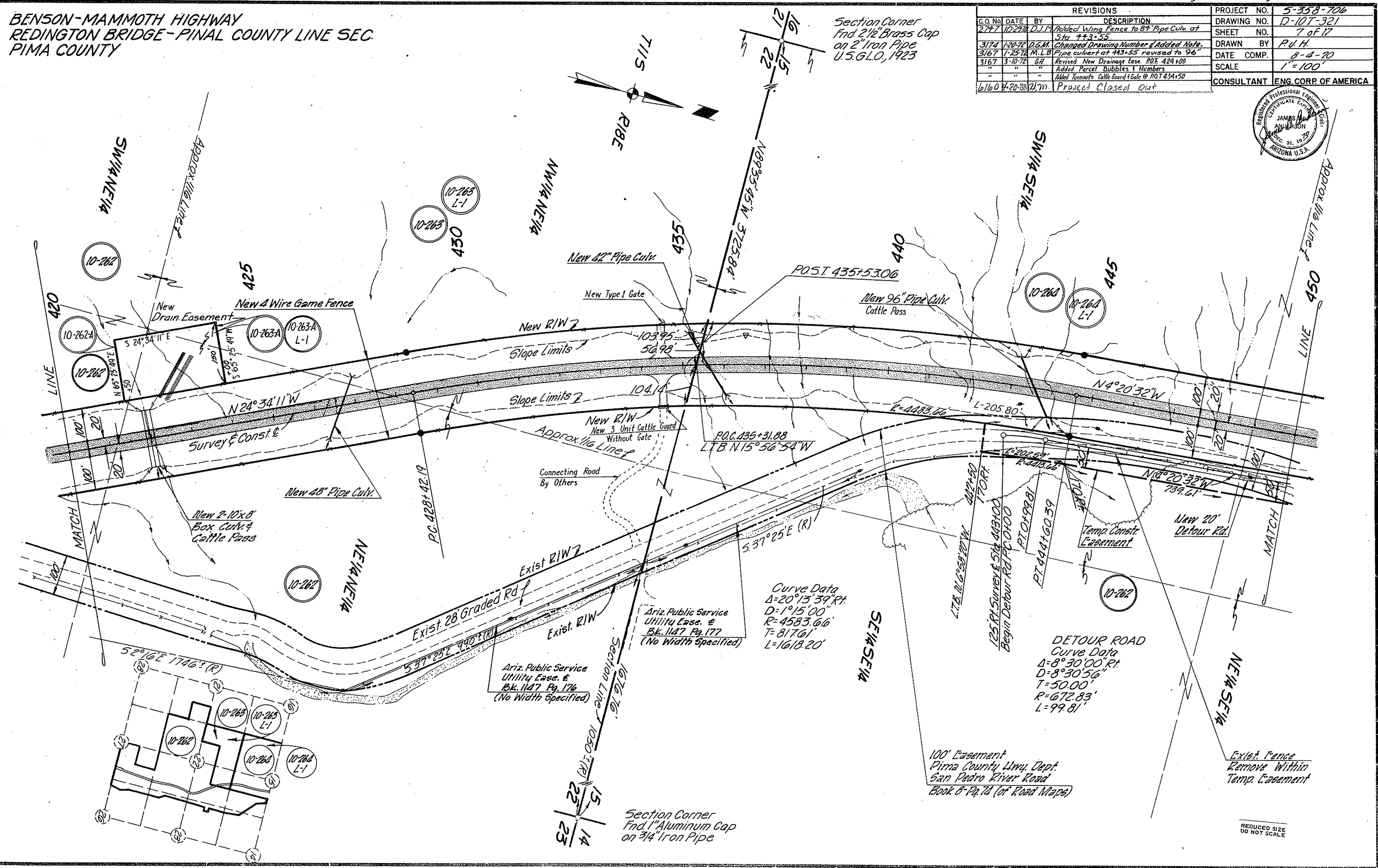
REDUCED SIZE
 DO NOT SCALE

**BENSON-MAMMOTH HIGHWAY
REDINGTON BRIDGE-PINAL COUNTY LINE SEC.
PIMA COUNTY**

REVISIONS			PROJECT NO.
2777	10-29-70	D.J.M. Added Wing Fence to 8" Pipe Culv. at Sta 443+55	5-358-706
3174	1-20-72	D.G.M. Changed Drawing Number & Added Note.	DRAWING NO. D-10-T-321
3167	1-25-72	M.L.B. Pipe culvert at 443+55 revised to 96"	SHEET NO. 7 of 17
3167	3-10-72	B.H. Revised New Drainage base. POST 424 +00	DRAWN BY P.U.H.
"	"	" Added Parcel Bubbles & Numbers	DATE COMP. 8-4-70
"	"	" Added Turnouts, Cattle Guard & Gate @ P.O.T. 434+50	SCALE 1" = 100'
16160	4-20-83	J.W.M. Project Closed Out	CONSULTANT ENG. CORP. OF AMERICA



CHECKED BY: *Russell*
HARD COPY 6921.M1



Section Corner
Fnd 2 1/2" Brass Cap
on 2" Iron Pipe
U.S.G.L.O., 1923

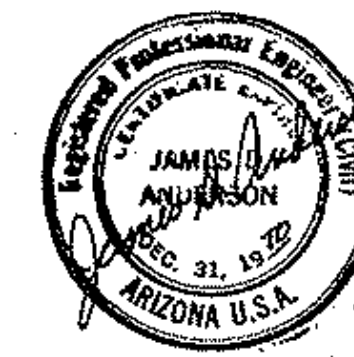
Curve Data
Δ=20°15'39" Rt.
D=1°15'00"
R=4583.66'
T=817.61'
L=1618.20'

DETOUR ROAD
Curve Data
Δ=8°30'00" Rt.
D=8°30'56"
T=50.00'
R=672.83'
L=99.81'

Section Corner
Fnd 1" Aluminum Cap
on 3/4" Iron Pipe

REDUCED SIZE
DO NOT SCALE

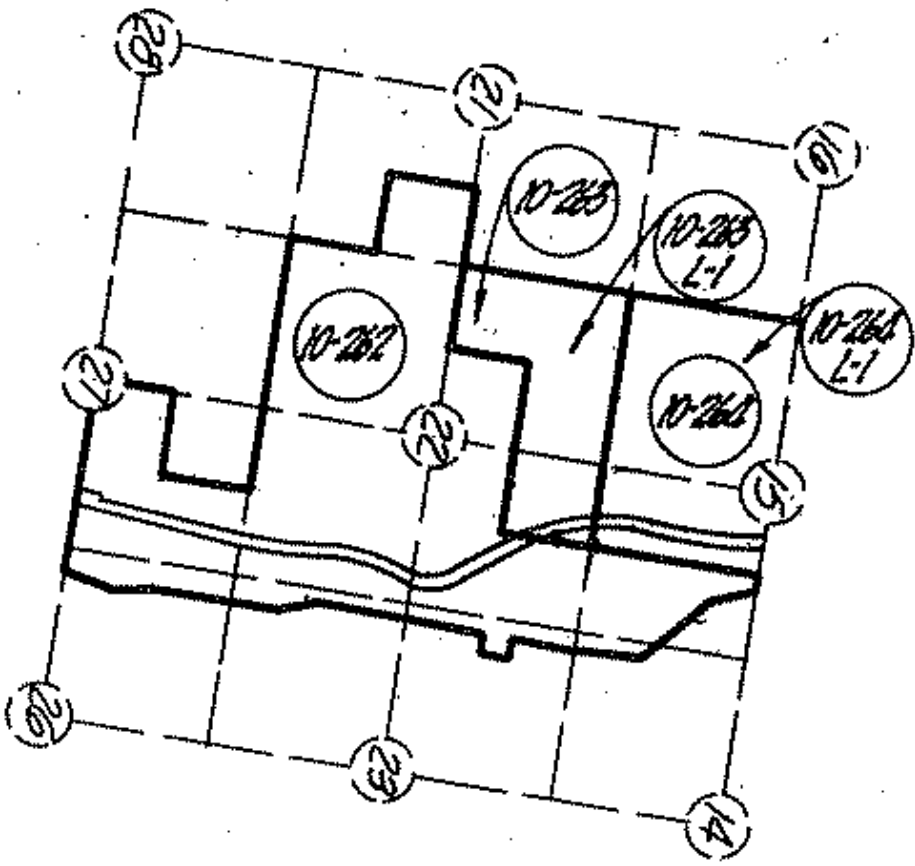
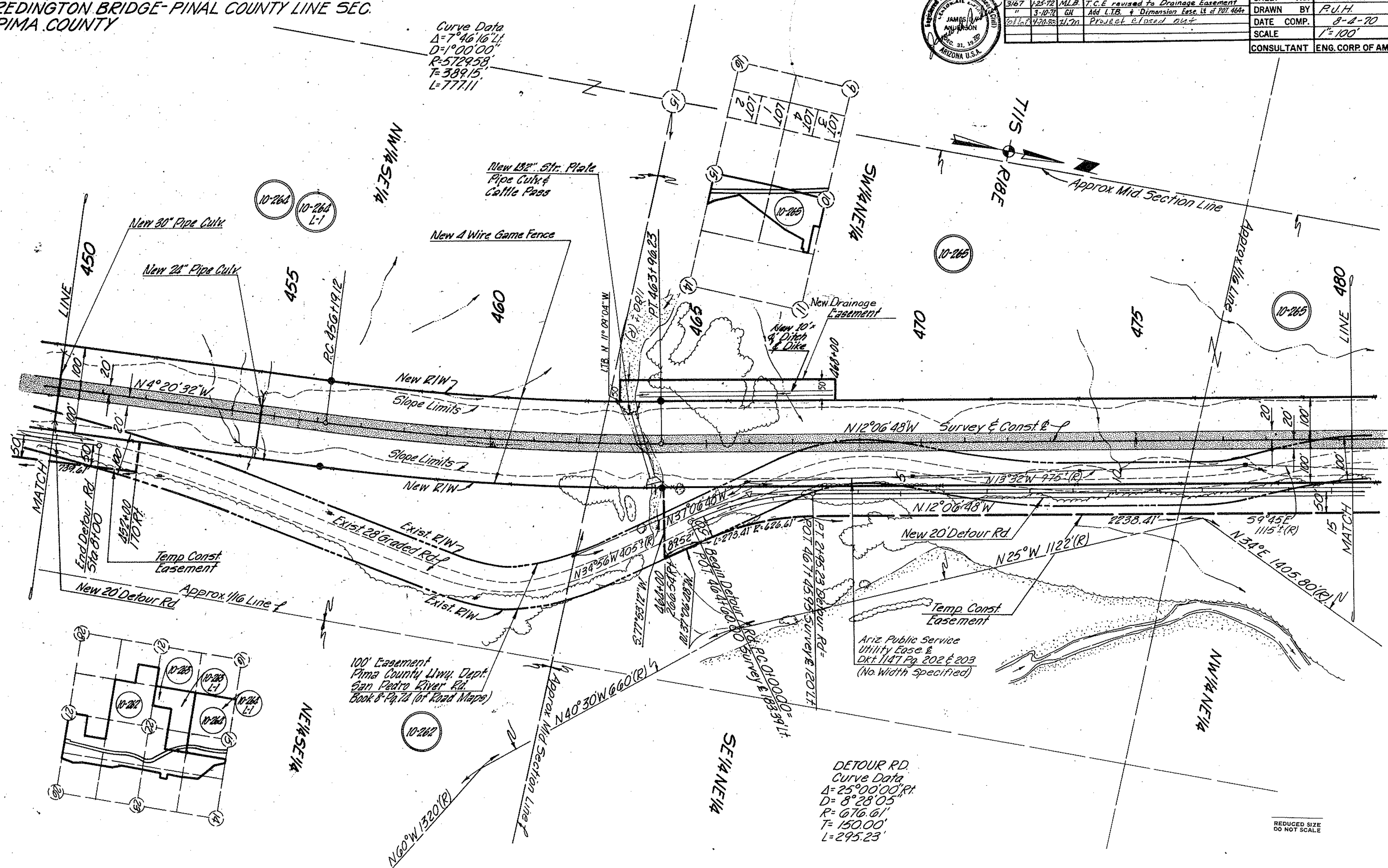
**BENSON-MAMMOTH HIGHWAY
REDINGTON BRIDGE-PINAL COUNTY LINE SEC.
PIMA COUNTY**



REVISIONS				PROJECT NO.
C.O. No.	DATE	BY	DESCRIPTION	5-358-706
3174	1-20-72	D.G.M.	Changed Drawing Number & Added Note.	DRAWING NO. D-10-T-321
3167	1-25-72	MLB	T.C.E. revised to Drainage Easement	SHEET NO. 8 of 17
"	3-10-72	GH	Add L.T.B. & Dimension Eas. of POT 464	DRAWN BY P.J.H.
3171	4-28-72	J.L.M.	Project closed out	DATE COMP. 8-2-70
				SCALE 1"=100'
				CONSULTANT ENG. CORP. OF AMERICA

CHECKED BY: [Signature] HARD COPY 6221 M1

Curve Data
 $\Delta = 7^{\circ}46'16''$
 $D = 1^{\circ}00'00''$
 $R = 5729.58'$
 $T = 389.15'$
 $L = 777.11'$



DETOUR RD.
 Curve Data
 $\Delta = 25^{\circ}00'00''$
 $D = 8^{\circ}28'05''$
 $R = 676.61'$
 $T = 150.00'$
 $L = 295.23'$

REDUCED SIZE
DO NOT SCALE

**BENSON-MAMMOTH HIGHWAY
REDINGTON BRIDGE-PINAL COUNTY LINE SEC
PIMA COUNTY**

REVISIONS				PROJECT NO.
C.O. No.	DATE	BY	DESCRIPTION	5-528-106
3174	1-20-72	D.G.M.	Changed Drawing Number & Added Note	DRAWING NO. D-10-7-321
3167	1-25-72	M.L.B.	Pipe culvert at 484+73 revised to 96"	SHEET NO. 9 of 17
10160	4-20-83	J.M.	Added New Cattle Guards + Turnouts at POT 508	DRAWN BY P.J.H.
			Project Closed out	DATE COMP. 8-1-70
				SCALE 1"=100'
				CONSULTANT ENG. CORP OF AMERICA



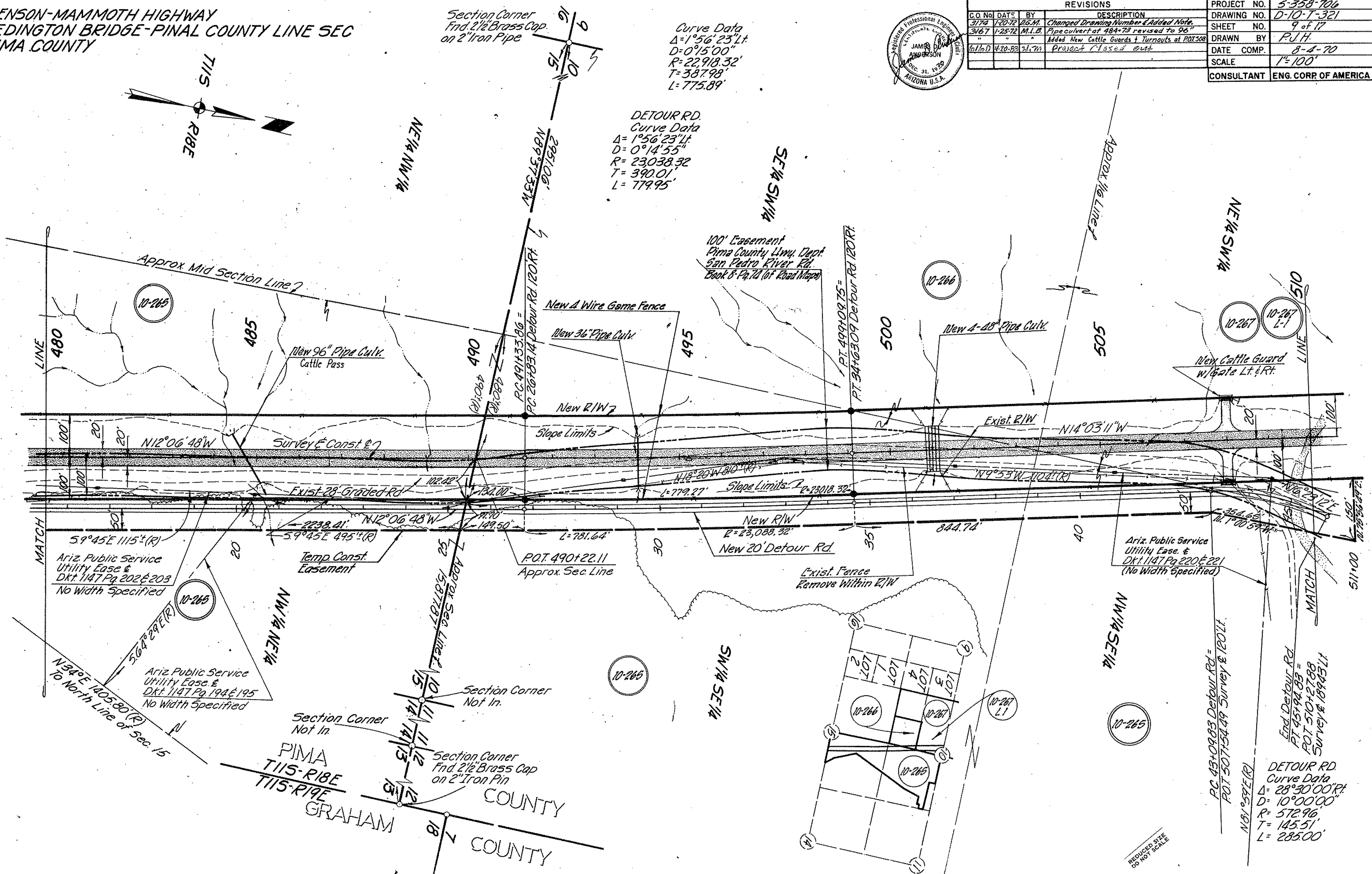
Section Corner
Fnd. 2 1/2" Brass Cap
on 2" Iron Pipe

Curve Data
Δ=1°56'23" Lt.
D=0°15'00"
R=22918.32'
T=387.98'
L=775.89'

DETOUR RD.
Curve Data
Δ=1°56'23" Lt.
D=0°14'55"
R=23038.32'
T=390.01'
L=779.95'

100' Easement
Pima County Hwy. Dept.
San Pedro River Rd.
Book 8 Pg. 72 (of Road Maps)

CHECKED BY: *James Anderson*
HARD COPY: 0921 M1



REDUCED SIZE
DO NOT SCALE

**BENSON-MAMMOTH-HIGHWAY
REDINGTON BRIDGE-PINAL COUNTY LINE SEC.
PIMA COUNTY**



REVISIONS			PROJECT NO.
C.O. No.	DATE	BY	5-358-706
2747	10-26-70	D.J.M.	DRAWING NO. D-10-T-321
3174	1-20-72	D.G.M.	SHEET NO. 10 of 17
3167	1-25-72	M.L.B.	DRAWN BY P.U.H.
10160	1-20-83	J.D.M.	DATE COMP. 8-4-70
Project closed out			SCALE 1"=100'
			CONSULTANT ENG. CORP. OF AMERICA

CONN. RD.
Curve Data
③
Δ = 60°00'00"RT
D = 41°21'03"
R = 138.56'
T = 80.00'
L = 145.10'

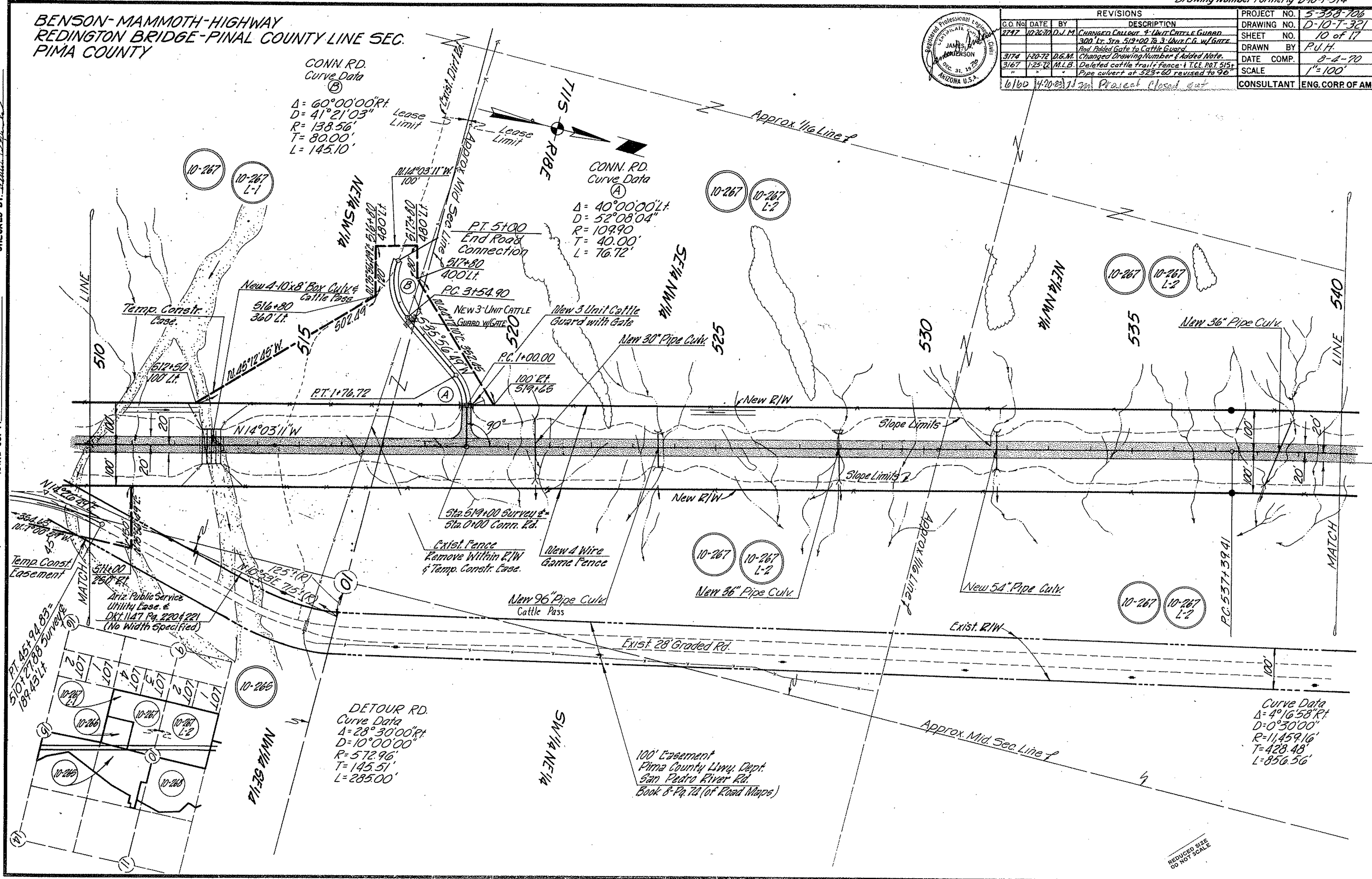
CONN. RD.
Curve Data
④
Δ = 40°00'00"LT
D = 52°08'04"
R = 109.90'
T = 40.00'
L = 76.72'

DETOUR RD.
Curve Data
Δ = 28°30'00"RT
D = 10°00'00"
R = 572.96'
T = 145.51'
L = 285.00'

Curve Data
Δ = 4°16'58"RT
D = 0°30'00"
R = 11,459.16'
T = 428.48'
L = 856.56'

CHECKED BY: Dennis L. Sp... L.S.

HARD COPY: 6921.M1



REDUCED SIZE
DO NOT SCALE

**BENSON-MAMMOTH HIGHWAY
REDINGTON BRIDGE-PINAL COUNTY LINE SEC.
PIMA COUNTY**

Section Corner
Fnd. 2 1/2" Brass Cap on
2" Pipe - 7' Above Ground
U.S.G.L.O., 1925

Section Corner
Not in

Curve Data
Δ = 4°16'58" Pt.
D = 0°30'00"
R = 11,459.16'
T = 428.48'
L = 856.56'

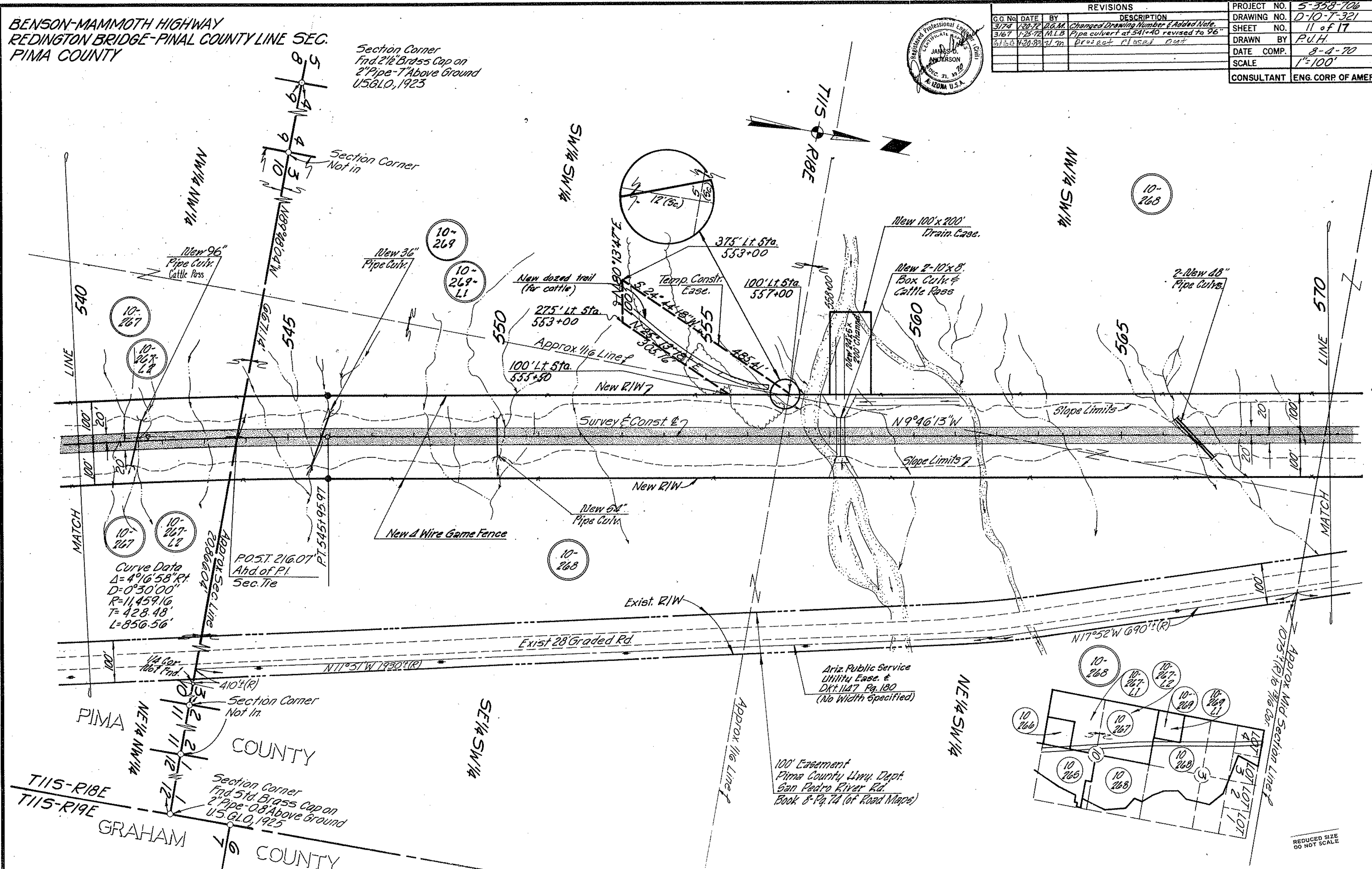
Section Corner
Not in

Section Corner
Fnd. 5th Brass Cap on
2" Pipe - 0.8' Above Ground
U.S.G.L.O., 1925



REVISIONS				PROJECT NO.
G.O. No.	DATE	BY	DESCRIPTION	5-358-706
3/74	1/20/72	D.G.M.	Changed Drawing Number & Added Note.	DRAWING NO. D-10-T-321
3/67	1-25-72	M.L.B.	Pipe culvert at 541+40 revised to 96"	SHEET NO. 11 of 17
3/74	4/30/83	J.M.	Project closed out	DRAWN BY P.U.H.
				DATE COMP. 8-2-70
				SCALE 1"=100'
				CONSULTANT ENG. CORP. OF AMERICA

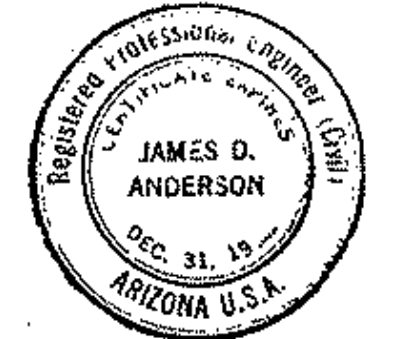
HARD COPY 8727 MI CHECKED BY: [Signature]



REDUCED SIZE
DO NOT SCALE

BENSON-MAMMOTH HIGHWAY
REDINGTON BRIDGE-PINAL COUNTY LINE SEC.
PIMA COUNTY

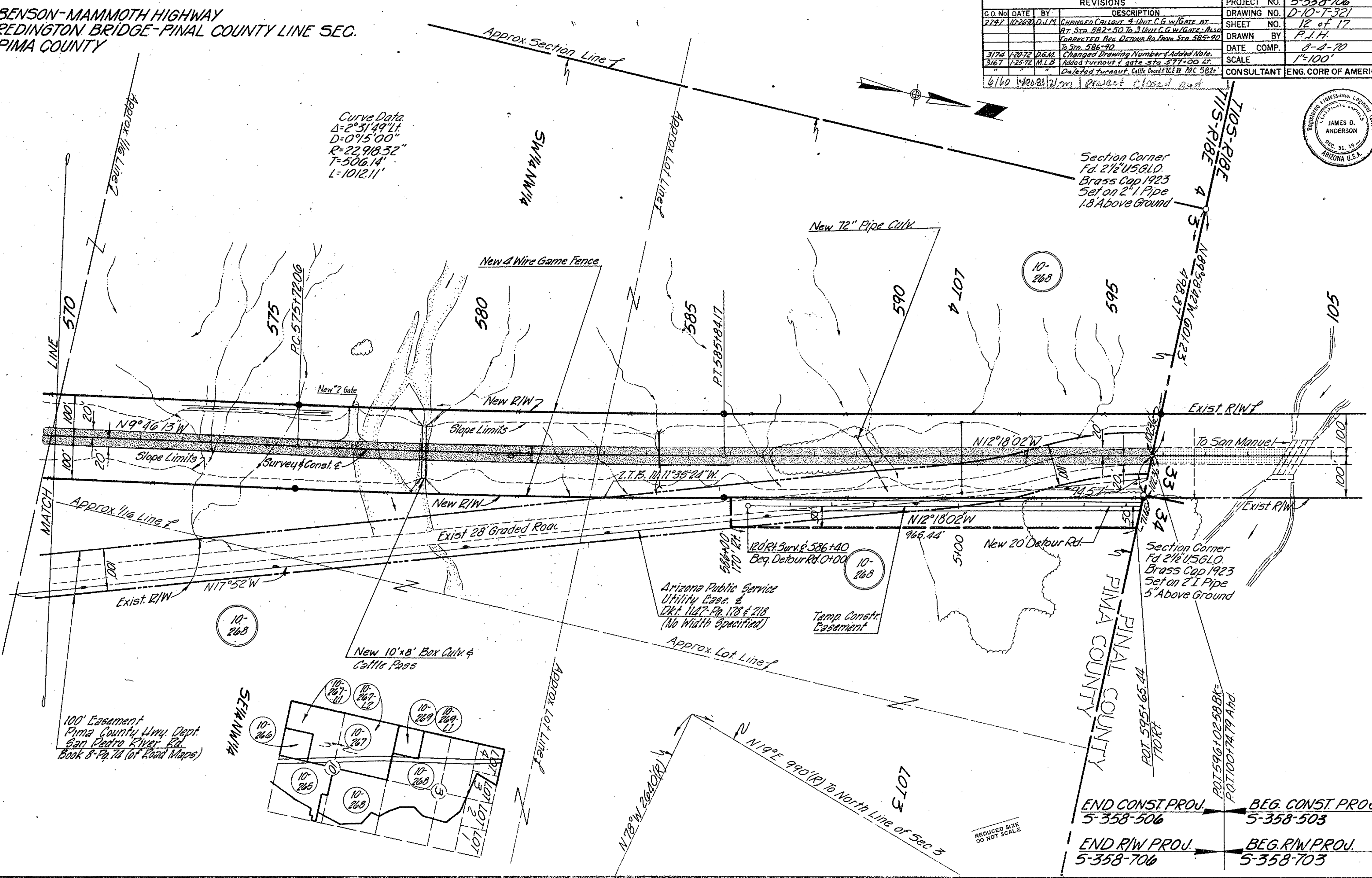
REVISIONS				PROJECT NO.	5-358-706
C.O. NO.	DATE	BY	DESCRIPTION	DRAWING NO.	D-10-T-321
2747	10-26-70	D.J.M.	CHANGED CALLOUT 4 UNIT C.G.W/GATE AT PT. STA. 582+50 TO 3 UNIT C.G.W/GATE. ALSO CORRECTED BEG. DETOUR RD FROM STA. 585+90 TO STA. 586+90	SHEET NO.	12 of 17
3174	1-20-72	D.G.M.	Changed Drawing Number of Added Note.	DRAWN BY	P.J.H.
3167	1-25-72	M.L.B.	Added Turnout 2 gate sta. 577+00 LT.	DATE COMP.	8-4-70
			Deleted turnout Cattle Guard F.T. R.C. 582+	SCALE	1"=100'
6160	4-26-83	2/m	Project closed out	CONSULTANT	ENG. CORP. OF AMERICA



Curve Data
 $\Delta = 2^\circ 31' 49''$ Lt
 $D = 0^\circ 15' 00''$
 $R = 22,918.32'$
 $T = 506.14'$
 $L = 1012.11'$

Section Corner
 Fd 2 1/2" U.S.G.L.O.
 Brass Cap 1923
 Set on 2" I Pipe
 1.8 Above Ground

Section Corner
 Fd 2 1/2" U.S.G.L.O.
 Brass Cap 1923
 Set on 2" I Pipe
 5' Above Ground



HARD COPY. 6921 M1. CHECKED BY: [Signature]

REDUCED SIZE
DO NOT SCALE

END CONST. PROJ. 5-358-506 BEG. CONST. PROJ. 5-358-503
 END R/W PROJ. 5-358-706 BEG. R/W PROJ. 5-358-703

100' Easement
 Pima County Hwy. Dept.
 San Pedro River Rd.
 Book 8-Pg. 74 (of Road Maps)

