

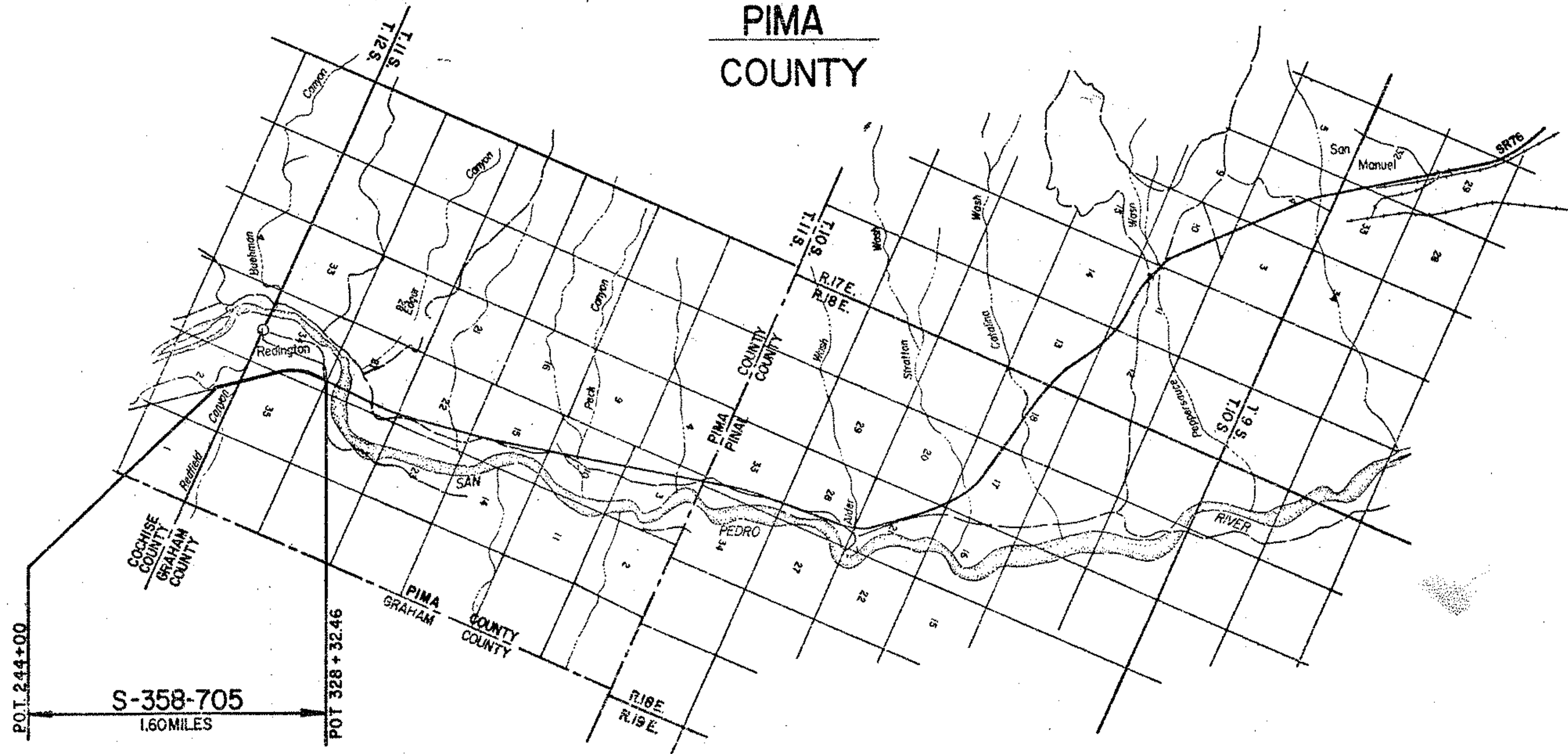
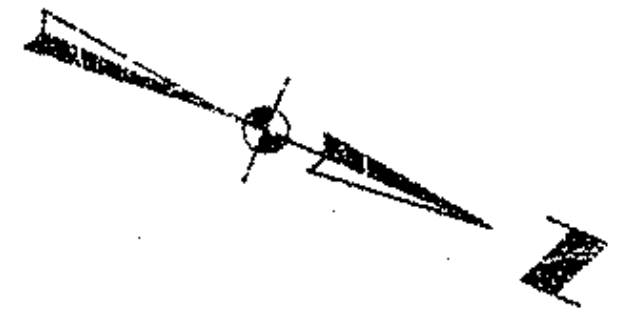
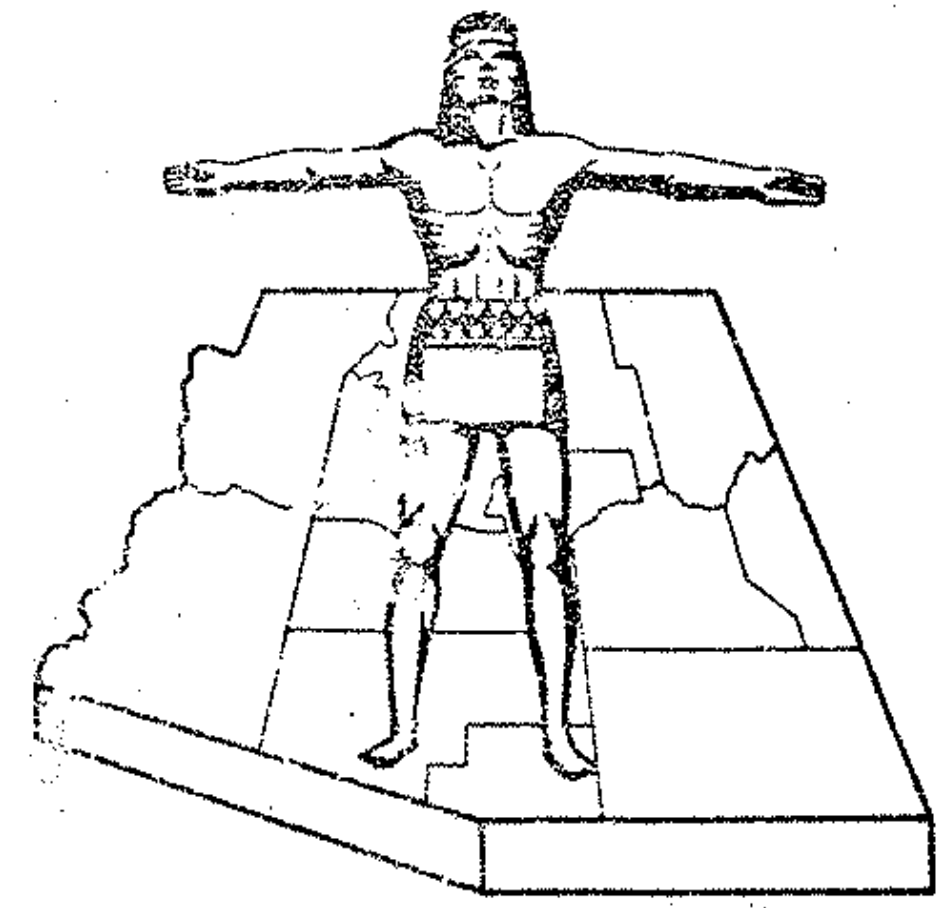
FED. ROAD DIVISION	STATE	PROJECT NUMBER	SHEET NUMBER	TOTAL SHEETS	FINALIZED PLANS
7	ARIZ.	S-358-705	1	8	

DRAWING NUMBER D-10-T-319

STATE OF ARIZONA
STATE HIGHWAY DEPARTMENT



RIGHT OF WAY PLAN OF THE
BENSON - MAMMOTH
STATE HIGHWAY
PROJECT NO. S-358-705
PIMA
COUNTY



RW/PLANS
FILE SET

HIGHWAY CENTER LINE	(dash-dot)
HIGHWAY R/W LINE	(dash-dot-dot)
CONTROLLED ACCESS	(dashed)
R. R. R/W COMMON TO HIGHWAY R/W	(dash-dot-dot-dot)
R. R. R/W LINE	(dash-dot-dot-dot-dot)
TOWNSHIP AND RANGE LINE	(dash-dot-dot-dot-dot-dot)
SECTION LINE	(dash-dot-dot-dot-dot-dot-dot)
1/4 LINE OR MID-SECTION LINE	(dash-dot-dot-dot-dot-dot-dot-dot)
1/8 LINE	(dash-dot-dot-dot-dot-dot-dot-dot-dot)
PROPERTY LINE (not part of a Subdivision)	(dash-dot-dot-dot-dot-dot-dot-dot-dot-dot)
SUBDIVISION OR LOT LINE	(dash-dot-dot-dot-dot-dot-dot-dot-dot-dot-dot)
ORIGINAL LOT LINE	(dash-dot-dot-dot-dot-dot-dot-dot-dot-dot-dot-dot)
STATE AND NATIONAL BOUNDARIES	(dash-dot-dot-dot-dot-dot-dot-dot-dot-dot-dot-dot-dot)
COUNTY LINE	(dash-dot-dot-dot-dot-dot-dot-dot-dot-dot-dot-dot-dot-dot)
CITY LIMITS	(dash-dot-dot-dot-dot-dot-dot-dot-dot-dot-dot-dot-dot-dot-dot)
LAND GRANTS BOUNDARIES	(dash-dot-dot-dot-dot-dot-dot-dot-dot-dot-dot-dot-dot-dot-dot-dot)

CONVENTIONAL SIGNS

FOREST, NATIONAL MONUMENTS, MILITARY BASES AND INDIAN RESERVATION	(dashed line with cross-ticks)
SURVEY MEANDER LINE	(dashed line with 'S')
NEW R/W CONTROL POINT	(circle with 'P')
EXISTING R/W MARKER	(circle with 'M')
PARCEL NUMBER	(circle with number)
RAILROAD TRACK	(dashed line with cross-ticks)
POWER LINE	(dashed line with cross-ticks)
POWER TRANSMISSION LINE	(dashed line with cross-ticks)
TELEPHONE LINE	(dashed line with cross-ticks)
COMBINATION TELEPHONE AND POWER LINE	(dashed line with cross-ticks)
UNDERGROUND TELEPHONE CABLE	(dashed line with cross-ticks)
WATER LINE	(dashed line with cross-ticks)
GAS LINE	(dashed line with cross-ticks)
SEWER LINE	(dashed line with cross-ticks)
STORM DRAIN	(dashed line with cross-ticks)
CHAIN LINK FENCE	(dashed line with cross-ticks)
BARBED WIRE FENCE (coil out type)	(dashed line with cross-ticks)
STREET LIGHT	(circle with 'L')
WATER METER	(circle with 'M')
WATER VALVE	(circle with 'V')
DOWN GUY	(circle with 'G')
FIRE HYDRANT	(circle with 'H')
GAS METER	(circle with 'M')
GAS VALVE	(circle with 'V')
MANHOLE (existing)	(circle with 'M')
ROAD	(dashed line with cross-ticks)
PROPERTY ANCHOR BARS	(dashed line with cross-ticks)
PROPERTY LIMITS ARROWS	(dashed line with cross-ticks)
CANAL, CHANNEL OR DITCH	(dashed line with cross-ticks)
BRIDGE	(dashed line with cross-ticks)
BOX CULVERTS	(dashed line with cross-ticks)
CATTLE GUARD	(dashed line with cross-ticks)
RIVER	(dashed line with cross-ticks)
PIPE CULVERTS	(dashed line with cross-ticks)
DYKE	(dashed line with cross-ticks)

Approved in accordance with Roadway Plans

For Walter E. Pellett 11-25-69
ASSISTANT STATE ENGINEER DATE

ARIZONA STATE HIGHWAY COMMISSION
Approved for Right of Way Acquisition in accordance with
Resolution Number 69-50 dated 6-5-69
William N. Price State Highway Engineer

H. H. Bradwick 11-25-69
DEPUTY STATE ENGINEER DATE

U. S. DEPARTMENT OF TRANSPORTATION
FEDERAL HIGHWAY ADMINISTRATION
BUREAU OF PUBLIC ROADS

Approved:
DIVISION ENGINEER DATE

73

**BENSON-MAMMOTH HIGHWAY
 REDFIELD CANYON-REDINGTON BRIDGE SEC.
 PIMA COUNTY**

REVISIONS				PROJECT NO.
C.O. No.	DATE	BY	DESCRIPTION	5-358-105
2830	5-19-70	M.C.	Added Parc 10-183-A	DRAWING NO. D-10-T-319
3173	1-19-72	D.G.M.	Changed Drawing Number & Added Note.	SHEET NO. 2 OF 8
				DRAWN BY L.M.F.
				DATE COMP. 5-5-69
				SCALE

OWNERSHIP				RECORD					ACQUISITION RECORD					
PARCEL NUMBER	OWNER	DESCRIPTION	TOTAL AREA	AREA REQUIRED		EASEMENT AREA	REMAINDER		SHEET NUMBER	COMMISSION APPROVAL	TYPE & DATE OF INSTRUMENT	RECORDED		
				GROSS INCLUDING EXISTING R/W	NET EXCLUDING EXISTING R/W		LEFT	RIGHT				DATE	BOOK	PAGE
10-183	J.L. GOFF et ux	NW1/4 Sec. 2., T.12 S., R.18E.	*159.8Ac.		5.7Ac.	0.7Ac.	147.7 Ac.	5.7 Ac.	4	2-10-70 1-20-70	W.D. 12-22-69 Dfd 12-22-69	3-16-70	3702	404- 406
10-184	CAYETANO S. RONQUILLO et al	SW1/2 SW1/4, SW1/4 SE1/4 Sec. 35., T.11 S., R.18E.	160Ac.		7.8Ac.	0.7Ac.	76.9Ac.	74.6 Ac.	4	1-8-70	W.D. 12-17-69 Dfd 12-17-69	2-9-70	3679	355- 357
10-185	STATE OF ARIZONA	NI/2 SW1/2 Sec. 35., T.11 S., R.18E.	160Ac.		5.7Ac.	0.6Ac.	6.2Ac.	147.5 Ac.	485	2-10-70	R/W	NOT RECORDED		
-LI	BAYLESS & BERKALEW CO. Grazing Lease No. GR83	NI/2 SW1/2 Sec. 35., T.11 S., R.18E.	160Ac.		5.7Ac.	0.6Ac.	6.2Ac.	147.5 Ac.	485	R/W	Ease	1-13-70		
10-186	STATE OF ARIZONA	NE1/4 SE1/4, E1/2 NE1/4 Sec. 34., T.11 S., R.18E.	120Ac.		15.2Ac.	1.6Ac.	56.3Ac.	46.9 Ac.	586	2-10-70	R/W	NOT RECORDED		
-LI	BAYLESS & BERKALEW CO. Grazing Lease No. GR83	NE1/4 SE1/4, E1/2 NE1/4 Sec. 34., T.11 S., R.18E.	120Ac.		15.2Ac.	1.6Ac.	56.3Ac.	46.9 Ac.	586	R/W	Ease	1-13-70		
10-186-1	STATE OF ARIZONA	LOT 2, SW1/2 NE1/4 Sec. 2., T.12 S., R.18E.	280Ac.		7.6 Ac.		7.1Ac.	265.3Ac.	4	2-10-70	ESMT.	NOT RECORDED		
-LI	BAYLESS & BERKALEW CO. Grazing Lease No. GR83	LOT 2, SW1/2 NE1/4 Sec. 2., T.12 S., R.18E.	280Ac.		7.6 Ac.		7.1Ac.	265.3Ac.	4	R/W	Ease	1-13-70		
10-183-A	J.L. GOFF et ux	NW1/4 Sec. 2, T.12 S., R.18E.	153.4Ac.			0.1 Ac.	147.6Ac.	5.7Ac.	4	8-7-70	ESMT.	9-30-71	4092	529- 530

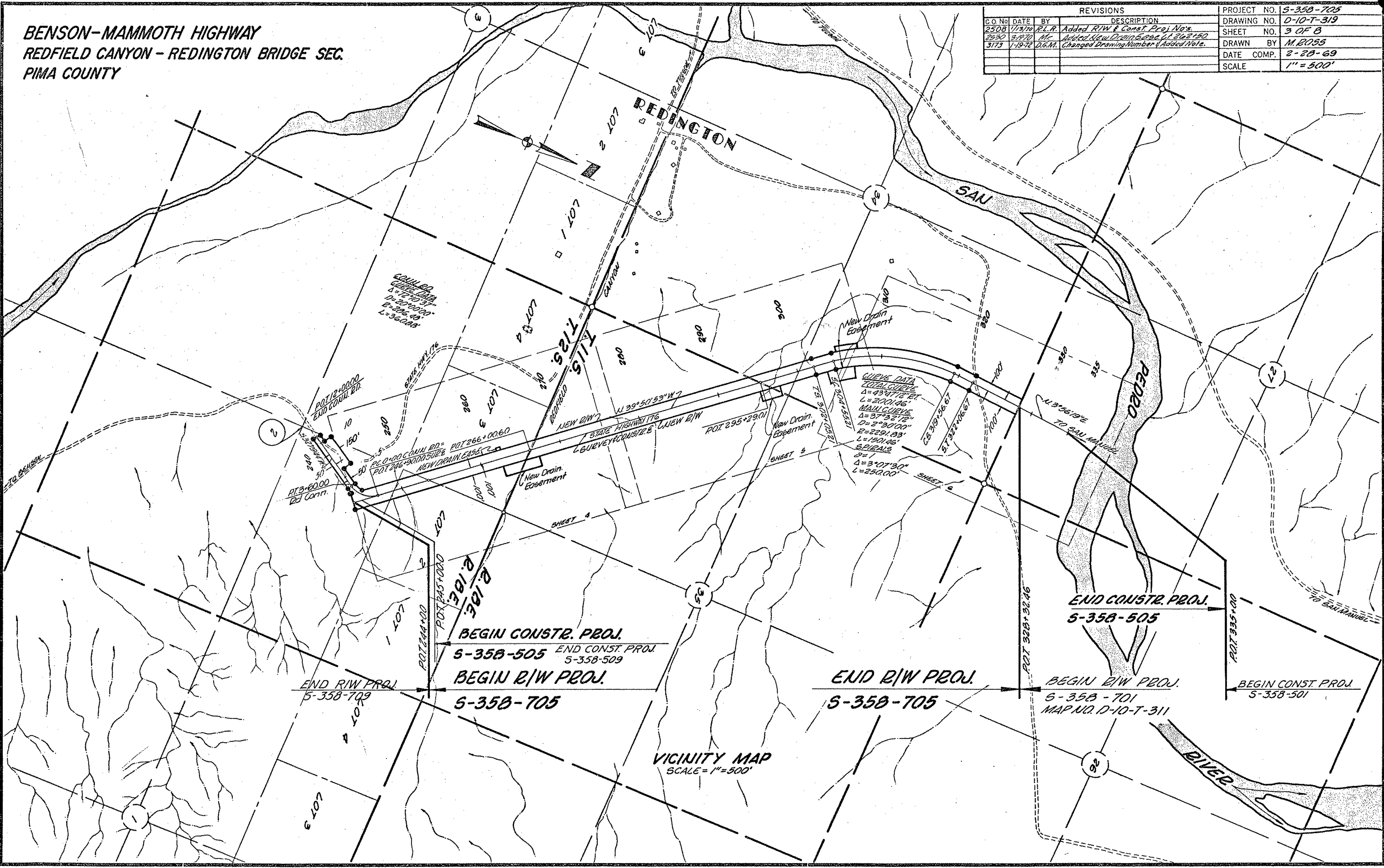
*NOTE:
 Areas shown are for that contiguous fee land traversed by this project; said parcel being a part of a tract of land known as Parker Ranch; consisting of 3,320 Acres, more or less, fee; 107,200 Acres, more or less, leased State Lands; and 16,000 Acres, more or less, Federal Government Grazing Allot.

**BENSON-MAMMOTH HIGHWAY
 REDFIELD CANYON - REDINGTON BRIDGE SEC.
 PIMA COUNTY**

REVISIONS			PROJECT NO.
C.O. No.	DATE	BY	DESCRIPTION
2508	11/13/70	R.L.A.	Added R/W & Const. Proj. No's.
2530	3/19/70	M.F.	Added New Drain Easement at Sta 2150
3173	1-19-72	D.G.M.	Changed Drawing Number & Added Note.

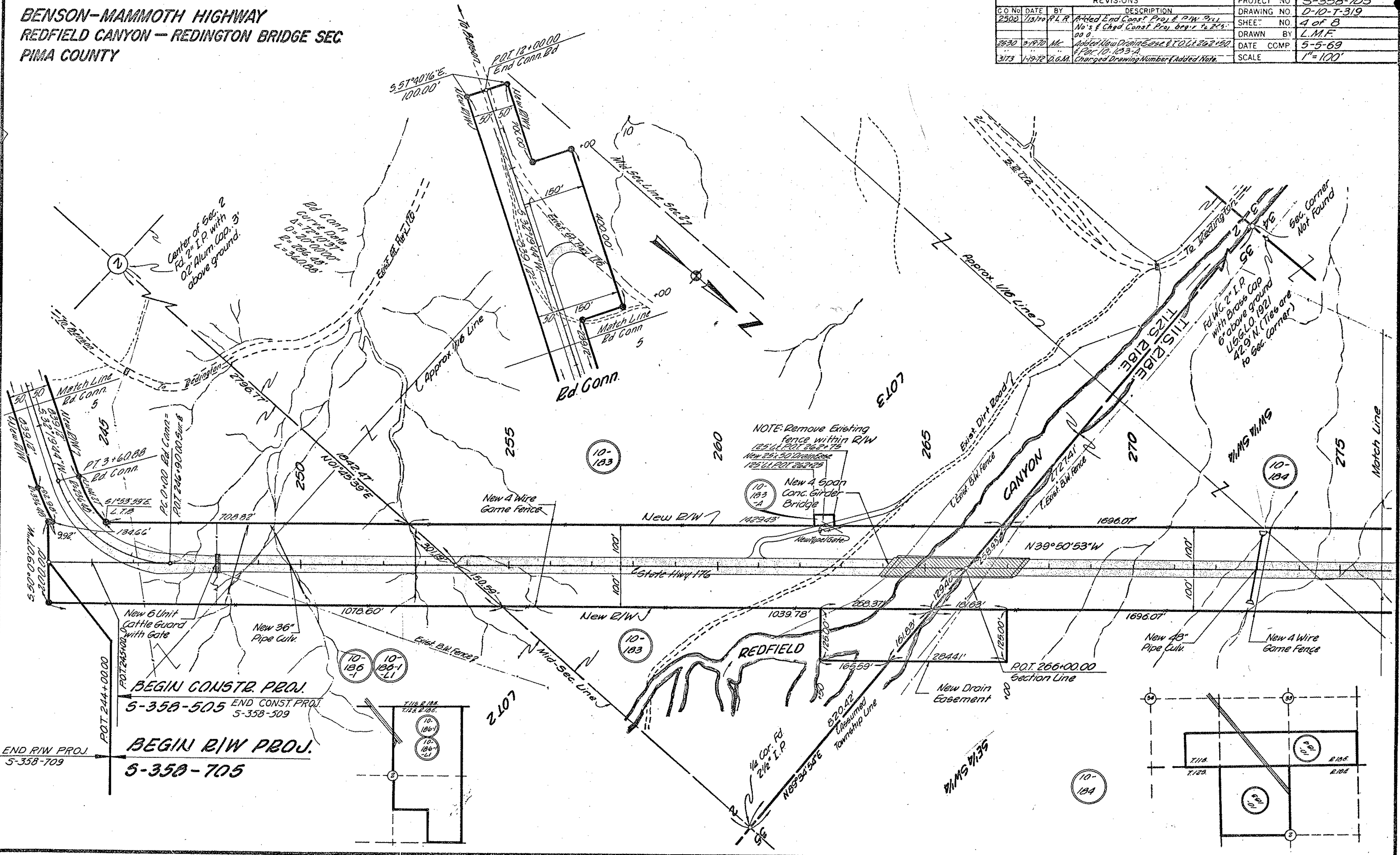
DRAWING NO.	3 OF 8
DRAWN BY	M. D. 255
DATE COMP.	2-28-69
SCALE	1" = 500'

CHECKED BY: HARD COPY: 5/22/72



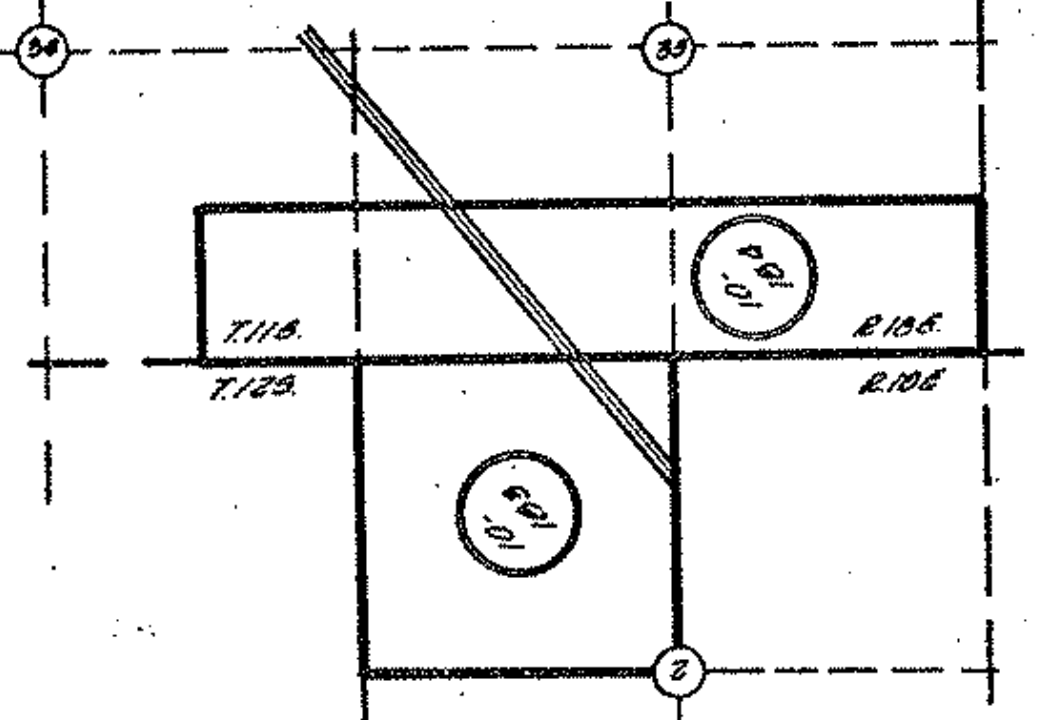
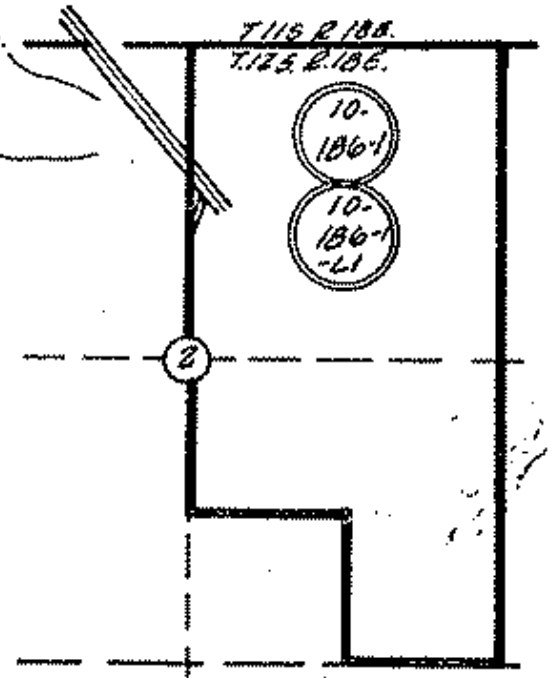
**BENSON-MAMMOTH HIGHWAY
 REDFIELD CANYON - REDINGTON BRIDGE SEC
 PIMA COUNTY**

REVISIONS				PROJECT NO	S-358-705
2502	7/19/70	P.L.R.	Added End Const. Proj. & P.W. Proj. No's & Chgd Const. Proj. Orig. to P.L.S.	DRAWING NO	D-10-T-319
2530	2-19-70	M.K.	Added New Drainage & E.T.O.C. 202 & 203 & 204	SHEET NO	4 of 8
3173	1-19-72	D.G.M.	Charged Drawing Number & Added Note.	DRAWN BY	L.M.F.
				DATE COMP	5-5-69
				SCALE	1" = 100'



NOTE: Remove Existing fence within R/W
 125' L.P. PT. 262+15
 New 2 1/2\"/>

END R/W PROJ. 5-358-709
 BEGIN CONST. PROJ. 5-358-505
 END CONST. PROJ. 5-358-509
 BEGIN R/W PROJ. 5-358-705



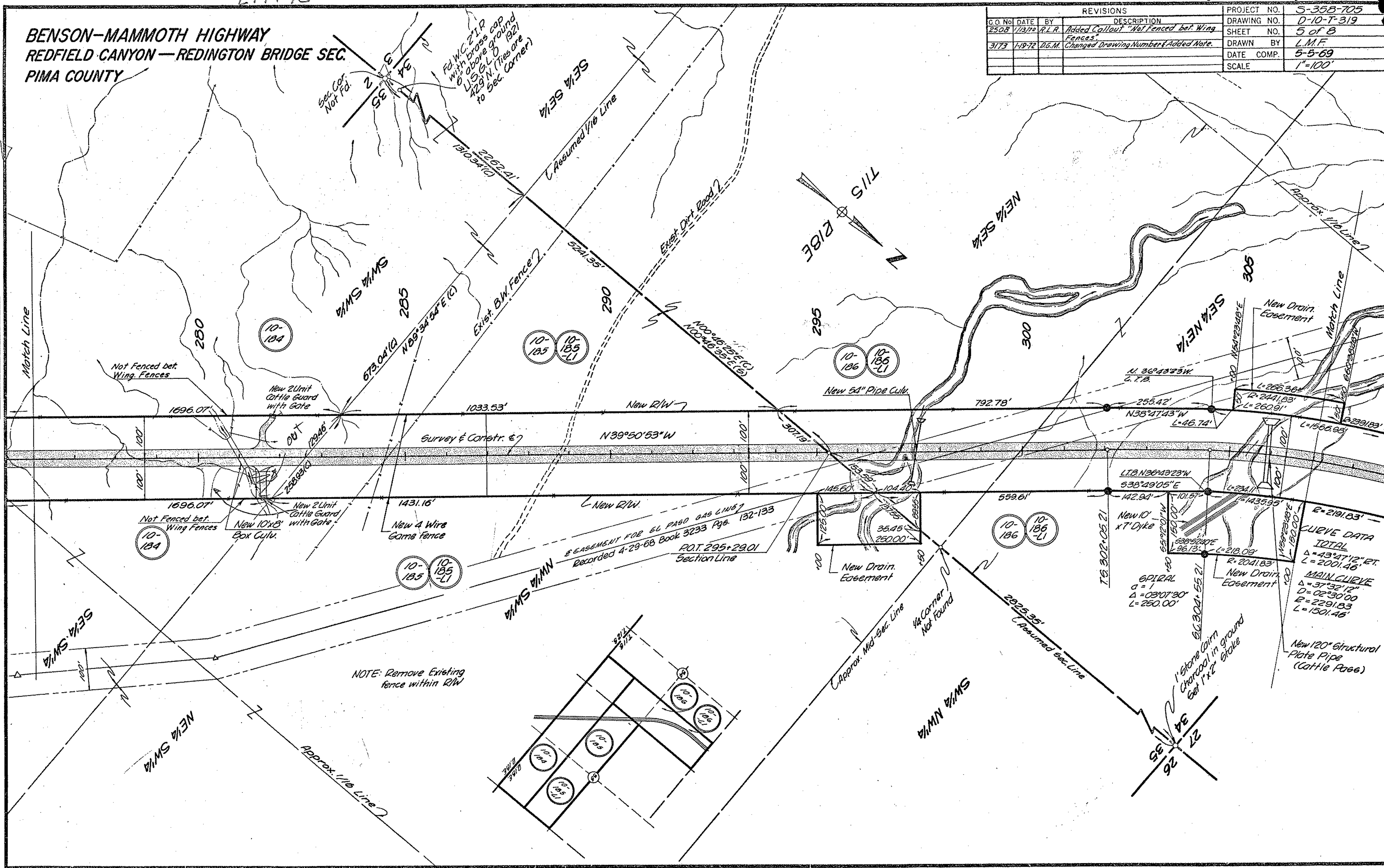
279+90

Drawing Number Formerly D-10-T-312

BENSON-MAMMOTH HIGHWAY REDFIELD CANYON—REDINGTON BRIDGE SEC. PIMA COUNTY

REVISIONS				PROJECT NO.	S-358-705
C.O. No.	DATE	BY	DESCRIPTION	DRAWING NO.	D-10-T-319
2508	1/13/70	R.L.R.	Added Callout "Not Fenced bet. Wing Fences"	SHEET NO.	5 of 8
317E	1-19-72	D.G.M.	Changed Drawing Number & Added Note.	DRAWN BY	L.M.F.
				DATE COMP.	5-5-69
				SCALE	1"=100'

HARD COPY 6823 MI & 6825 MI
CHECKED BY: [Signature]



NOTE: Remove Existing fence within RW

CURVE DATA TOTAL
 $\Delta = 43^{\circ}47'12''$ PT.
 $L = 2001.46'$

MAIN CURVE
 $\Delta = 37^{\circ}32'12''$
 $D = 02^{\circ}30'00''$
 $E = 2291.83'$
 $L = 1501.46'$

New 120" Structural Plate Pipe (Cattle Pass)

SPIRAL
 $a = 1$
 $\Delta = 03^{\circ}07'30''$
 $L = 250.00'$

1" stone Cairn Charcoal in ground Set 1" x 2" Stake

EASEMENT FOR EL PASO GAS LINE?
 Recorded 4-29-68 Book 3233 Pgs. 132-133
 P.O.T. 295+29.01 Section Line

New Drain Easement
 $L = 266.96'$
 $L = 244.83'$
 $L = 260.91'$
 $L = 156.93'$

$N 36^{\circ}43'55'' W$
 T.F.B.
 $255.42'$
 $N 38^{\circ}47'43'' W$
 $L = 46.74'$

New 54" Pipe Culu.

New R/W

Survey & Constr. 67
 $N 39^{\circ}50'53'' W$

New R/W

10-185
 10-185 -LI

10-186
 10-186 -LI

10-184
 10-184

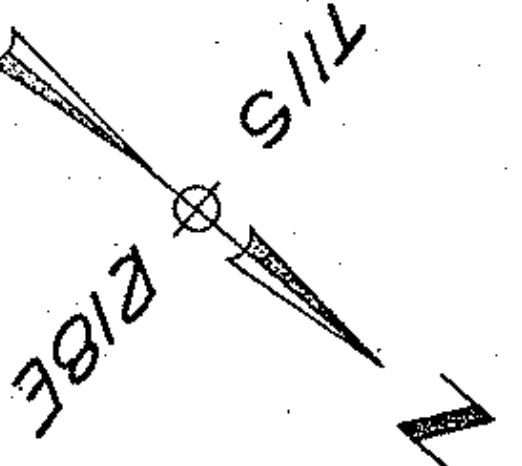
10-185
 10-185 -LI

10-186
 10-186 -LI

10-184
 10-184

Match Line

Match Line



$7/3 S \frac{1}{4} S E \frac{1}{4}$
 Assumed 1/16 Line

$NE \frac{1}{4} S E \frac{1}{4}$

$SE \frac{1}{4} NE \frac{1}{4}$

$SW \frac{1}{4} NW \frac{1}{4}$
 $SW \frac{1}{4} S W \frac{1}{4}$

$SW \frac{1}{4} NW \frac{1}{4}$

$SW \frac{1}{4} S W \frac{1}{4}$

Approx. 1/16 Line

Approx. Mid-sec. Line
 1/4 Corner Not Found

1310347(C)
 2262.41'
 Assumed 1/16 Line

Exist. Dirt Road

Exist. B/W Fence

Approx. 1/16 Line

New Drain Easement

Not Fenced bet. Wing Fences

New 2' Limit Cattle Guard with Gate

New 2' Limit Cattle Guard with Gate

New 10'x8' Box Culu.

New 4 Wire Game Fence

New Drain Easement

New Drain Easement

New Drain Easement

New Drain Easement

New Drain Easement

New Drain Easement

New Drain Easement

New Drain Easement

New Drain Easement

New Drain Easement

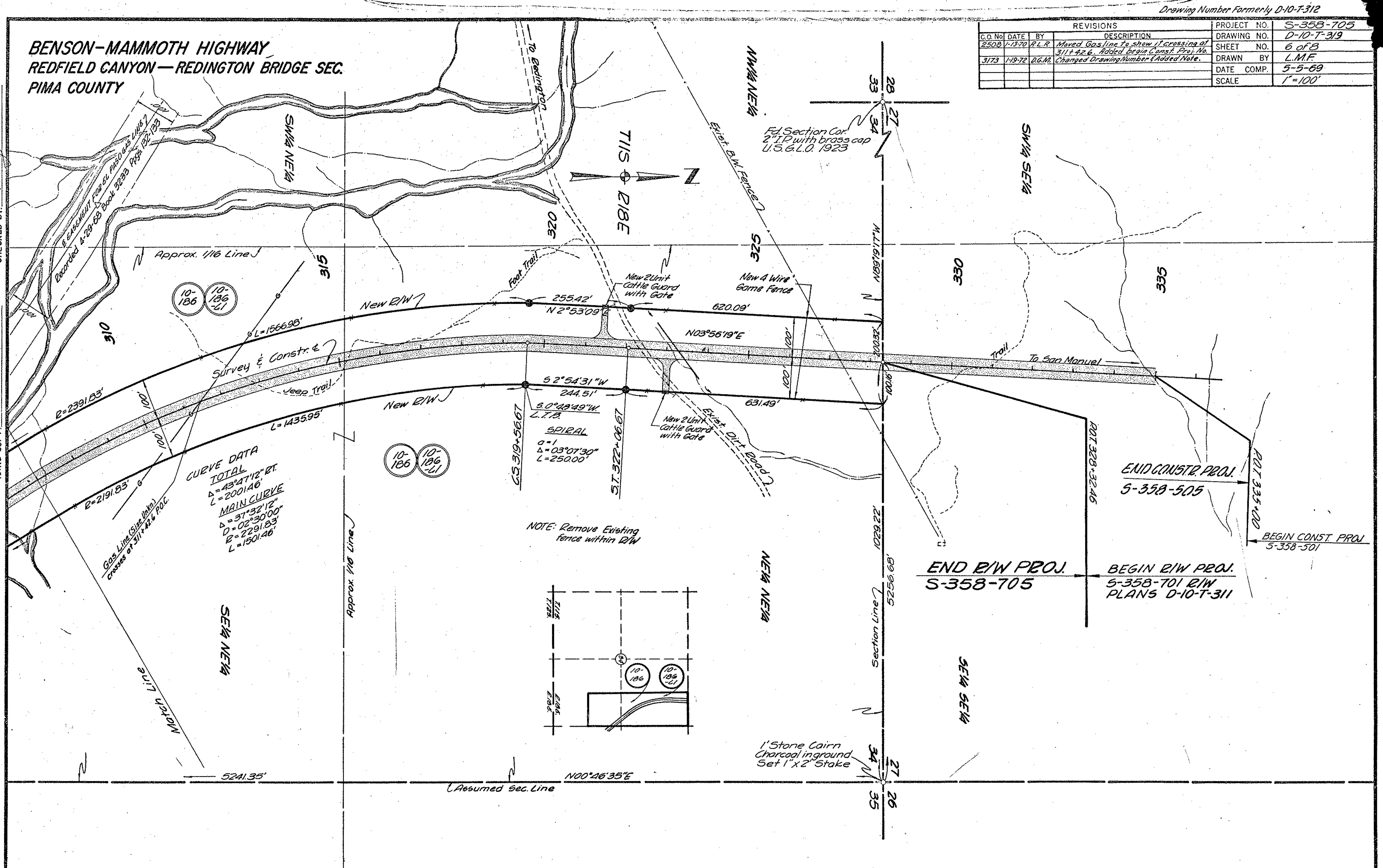
New Drain Easement

New Drain Easement

**BENSON-MAMMOTH HIGHWAY
REDFIELD CANYON—REDINGTON BRIDGE SEC.
PIMA COUNTY**

REVISIONS			PROJECT NO.
C.O. No.	DATE	BY	DESCRIPTION
2508	1-13-70	R.L.R.	Moved Gas line to show it crossing of 311+42.6. Added begin Const. Proj. No.
3173	1-19-72	D.G.M.	Changed Drawing Number & Added Note.

DRAWING NO.	S-358-705
SHEET NO.	6 of 8
DRAWN BY	L.M.F.
DATE COMP.	5-5-69
SCALE	1"=100'



CHECKED BY: [Signature] DATE: [Date]