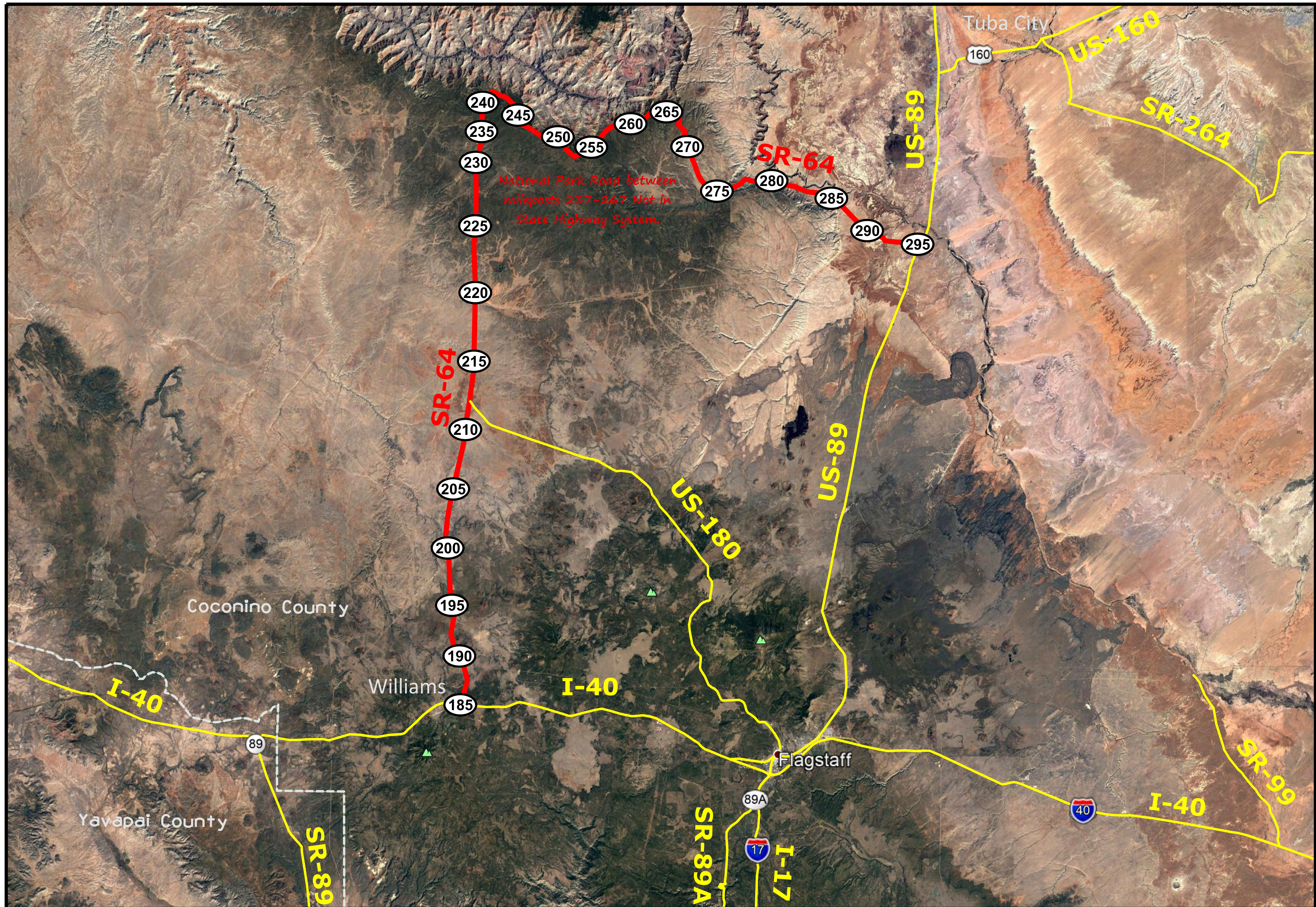


[Click on MilePost numbers to view Plans Index sheets](#)

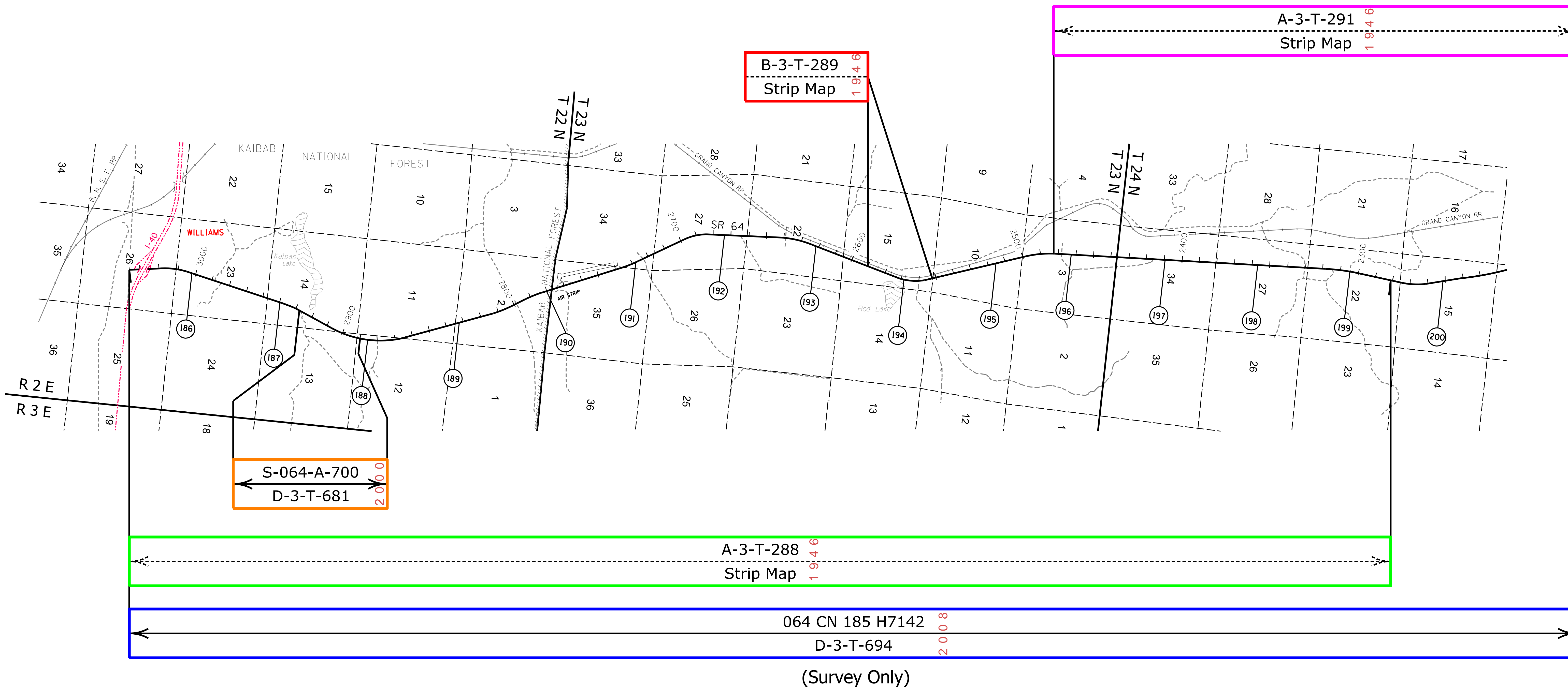
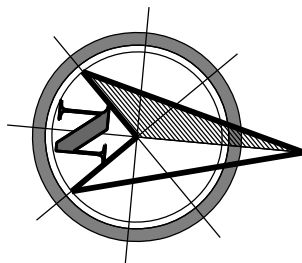
xx Mile Post Numbers

# SR 64

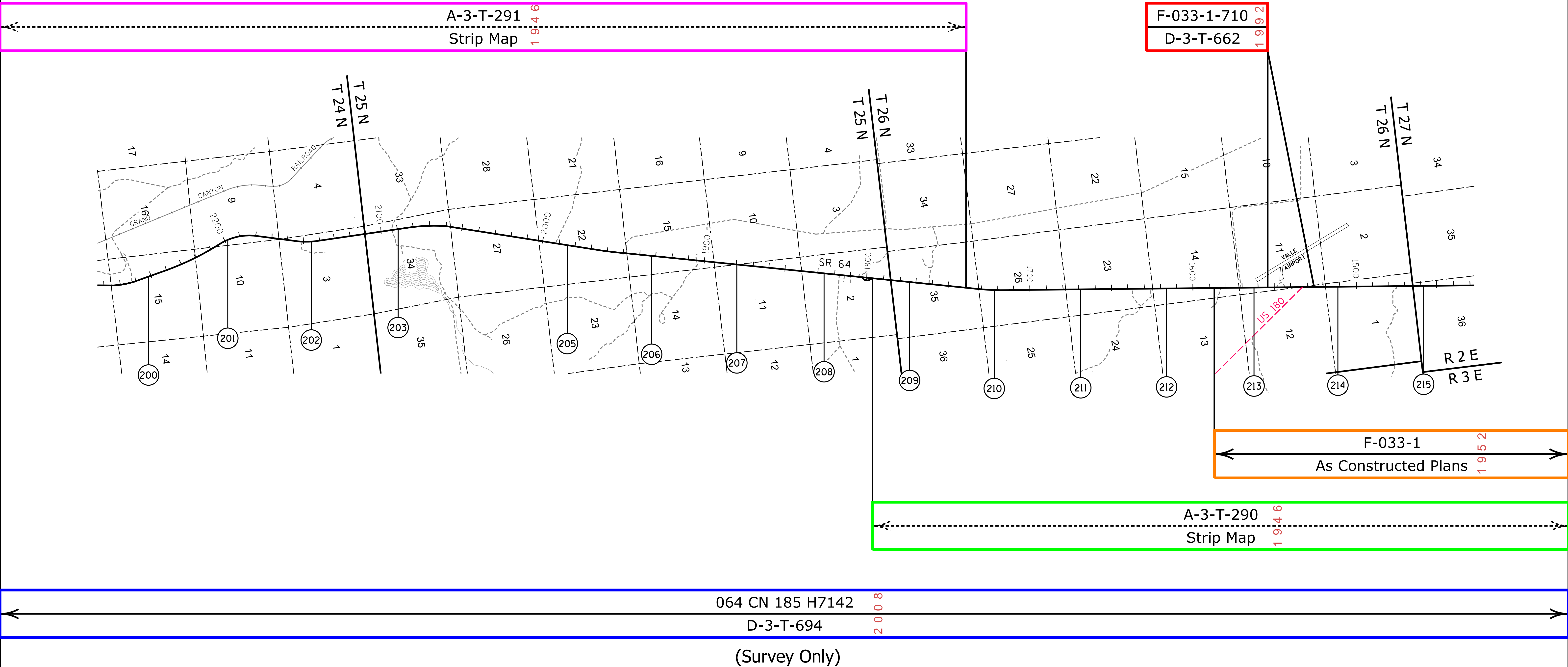
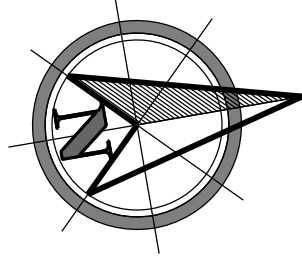
Mile Post: 185 to 296



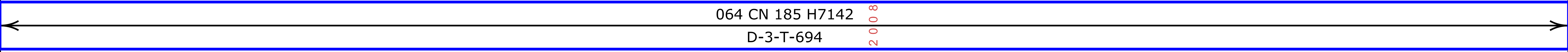
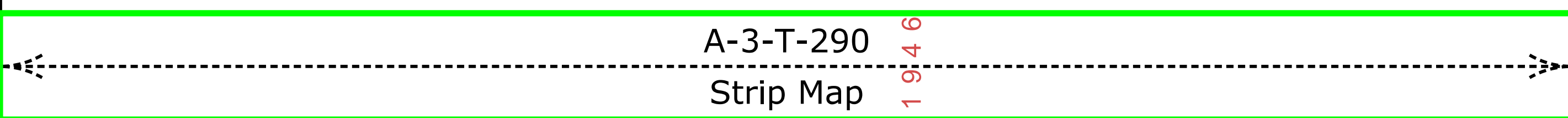
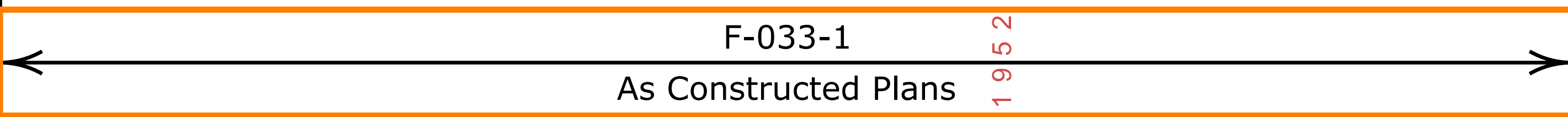
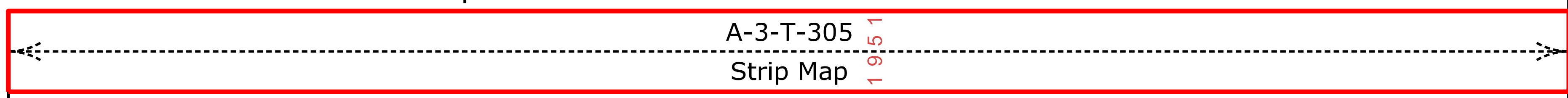
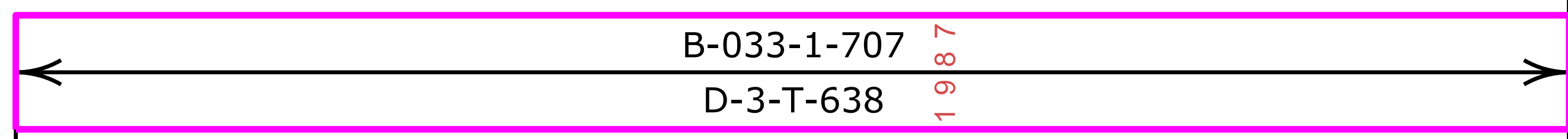
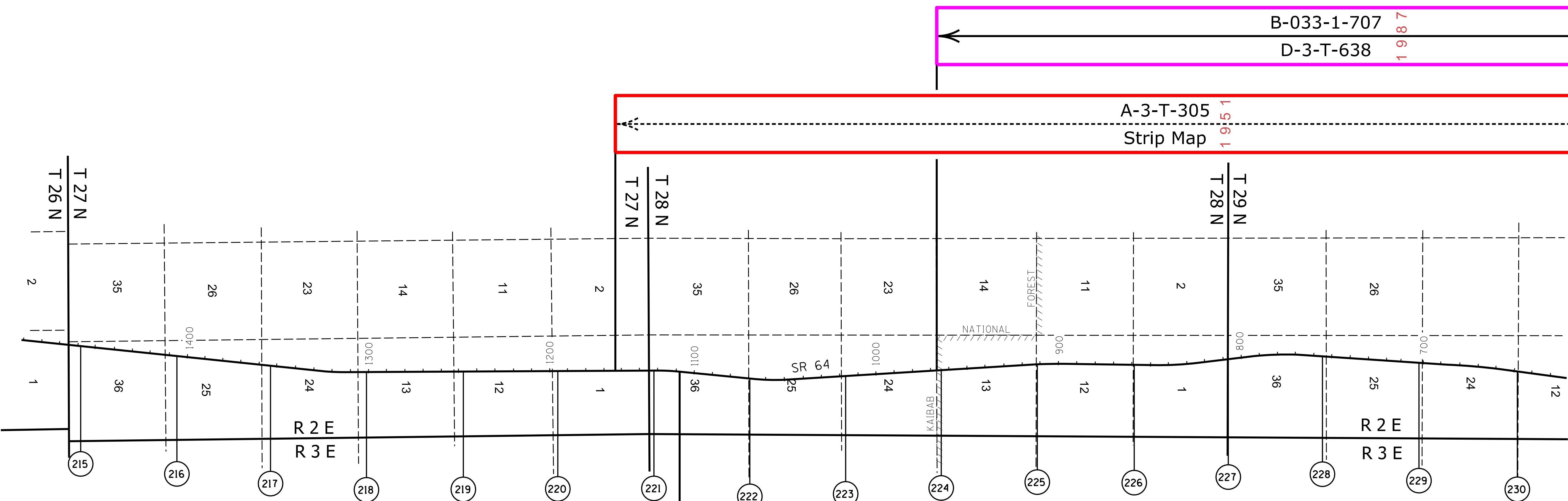
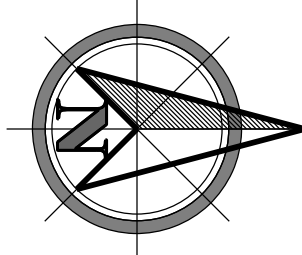
COCONINO COUNTY



COCONINO COUNTY

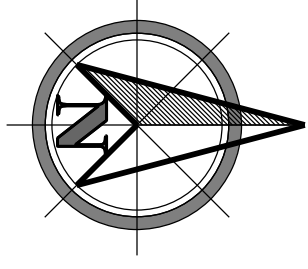


COCONINO COUNTY



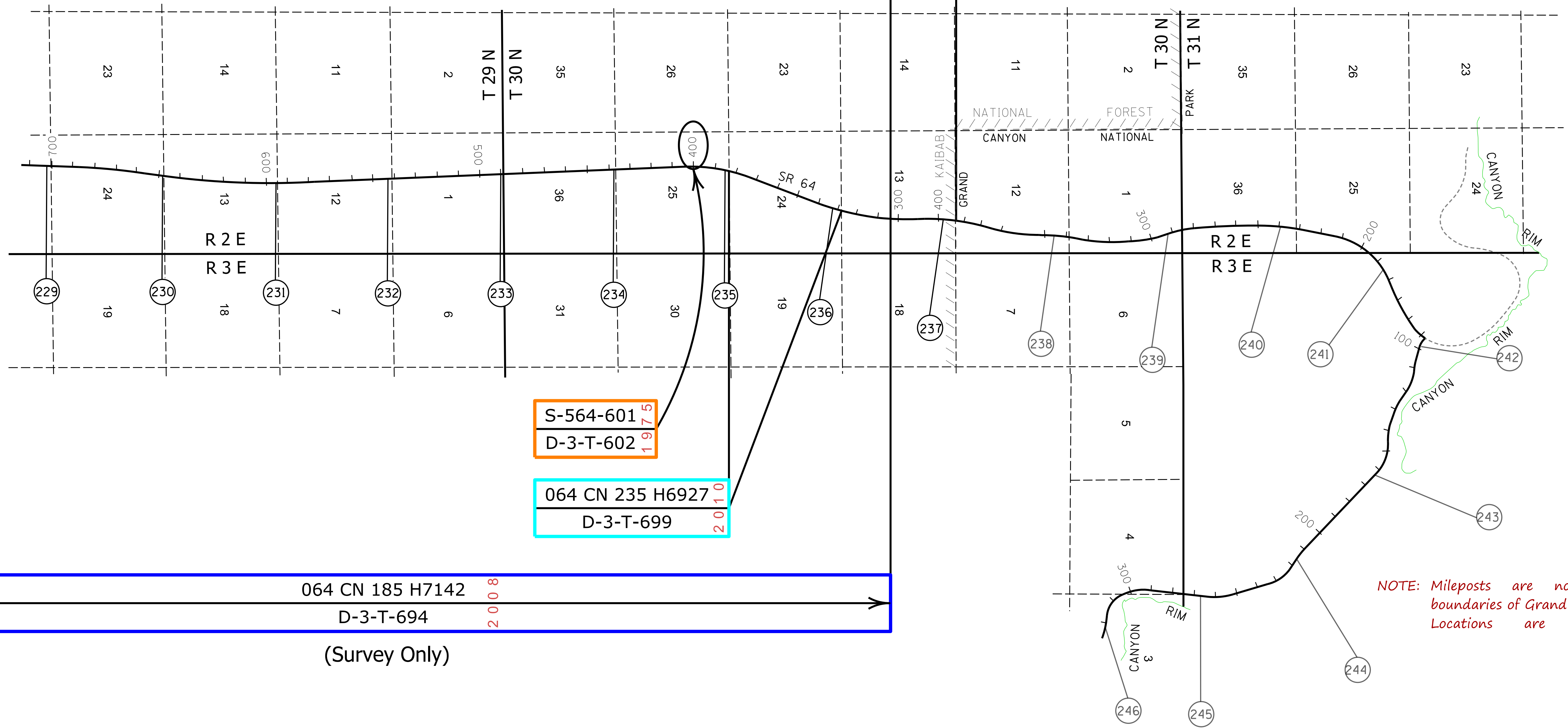
(Survey Only)

COCONINO COUNTY



B-033-1-707 7 9 8 7  
D-3-T-638 1 9 1

A-3-T-305 1 5 1  
Strip Map 1 9 1



S-564-601 5 7 6 1  
D-3-T-602 1 6 1

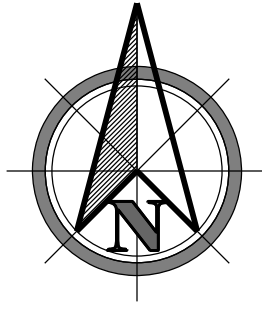
064 CN 235 H6927 0 1 0  
D-3-T-699 2 0 2

064 CN 185 H7142 8 0 0 2  
D-3-T-694 2 0 2

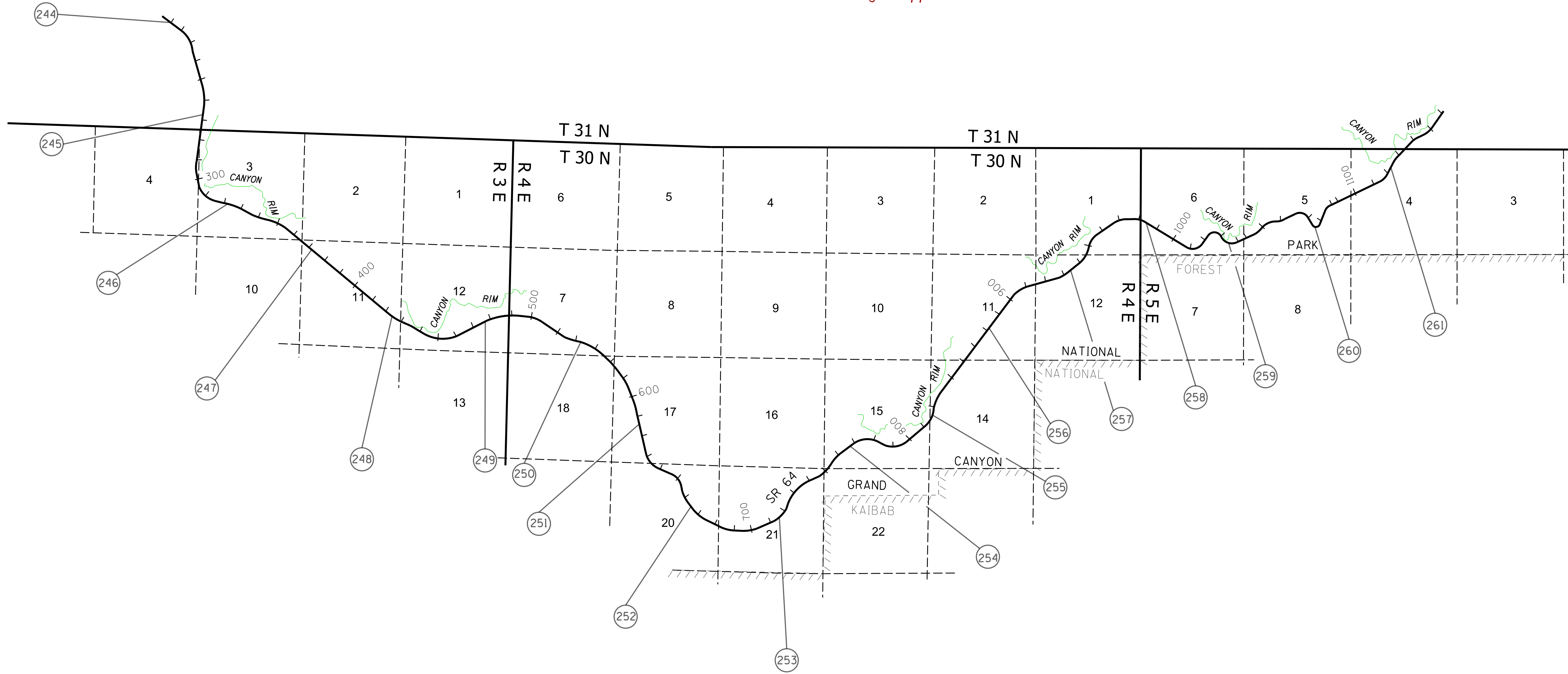
(Survey Only)

NOTE: Mileposts are not set within the boundaries of Grand Canyon National Park. Locations are only approximate.

COCONINO COUNTY

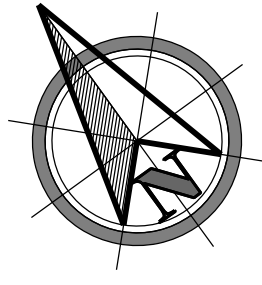


NOTE: Mileposts are not set within the boundaries of Grand Canyon National Park. Locations are only approximate.

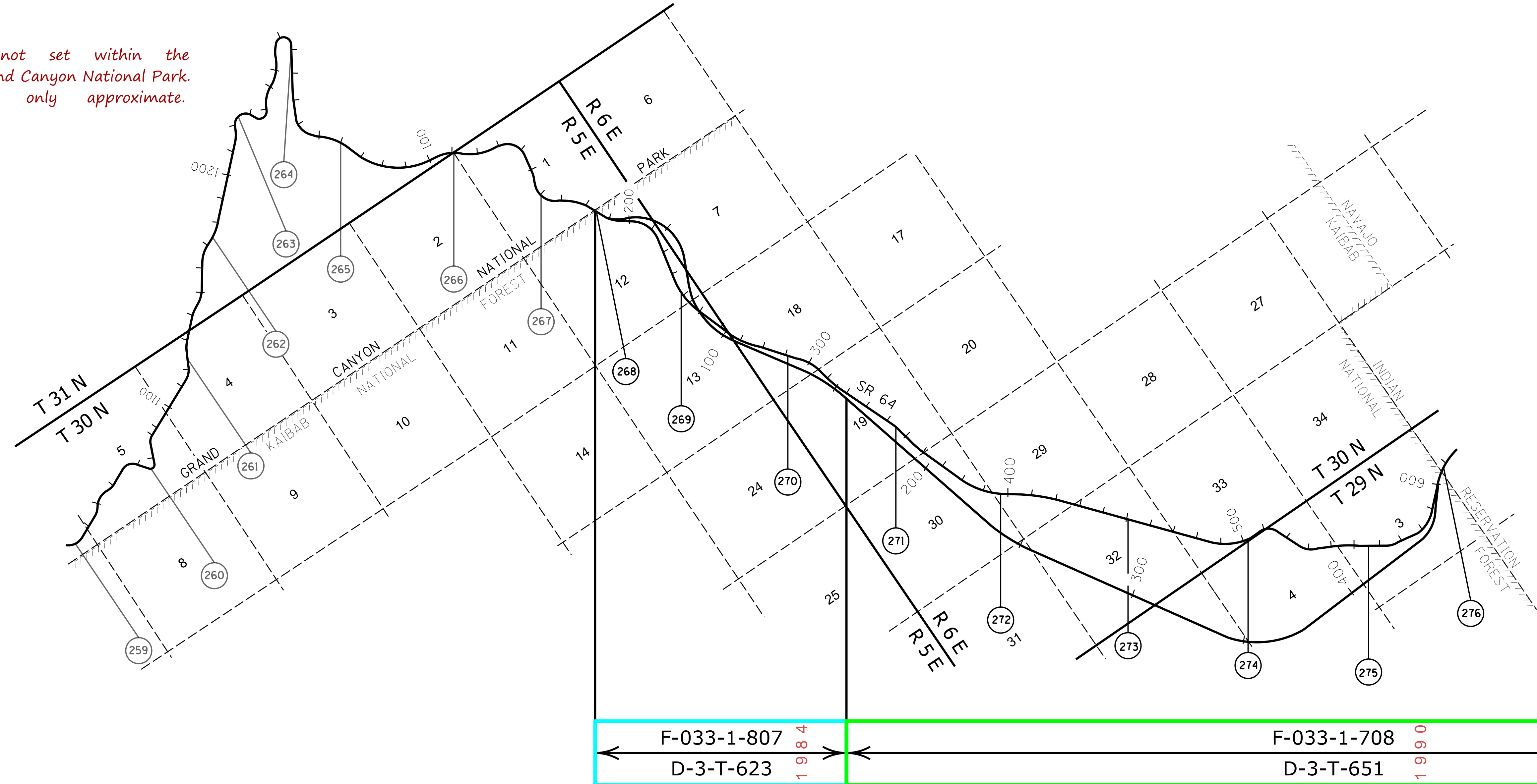


NOTE: No R/W Maps available for highway in Park. "As Built" only.

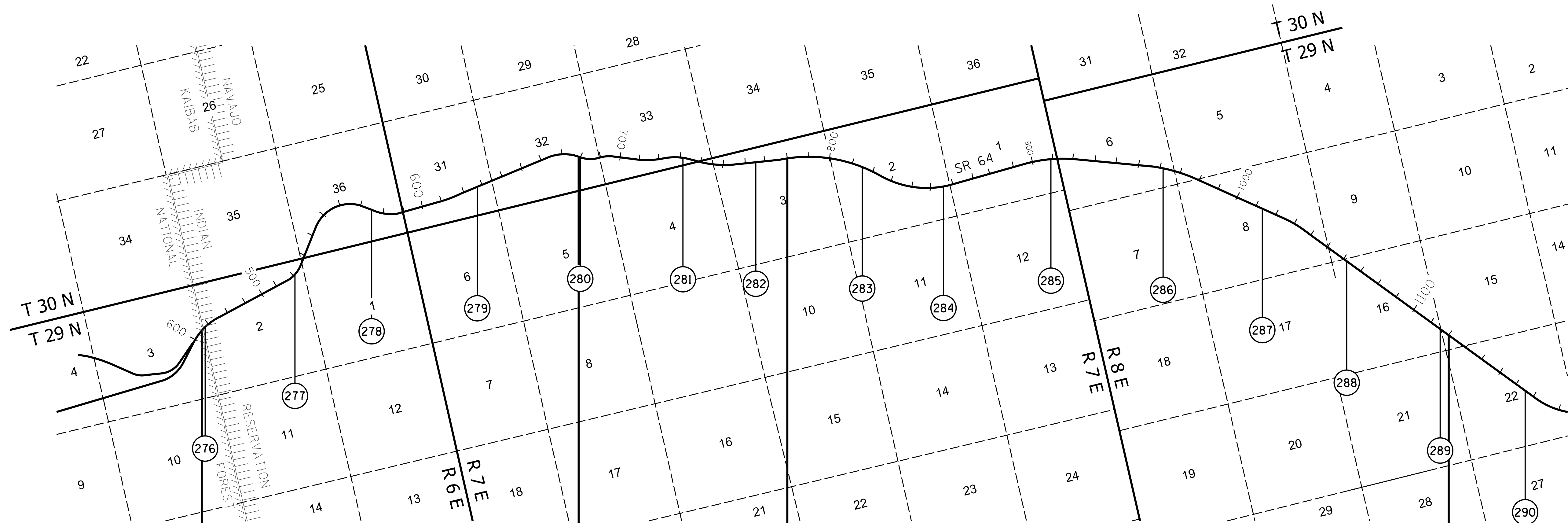
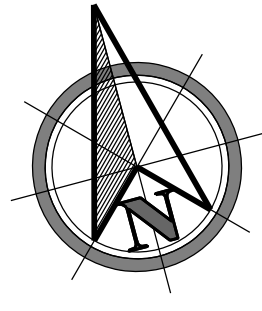
COCONINO COUNTY



NOTE: Mileposts are not set within the boundaries of Grand Canyon National Park. Locations are only approximate.



COCONINO COUNTY



← F-033-1-708 D-3-T-651 199.0 →	← F-033-1-801 D-3-T-591 197.1 →	← F-033-1-802 D-3-T-590 197.1 →	← F-033-1-808 D-3-T-617 198.0 →	← F-033-1-809 D-3-T-643 198.8 →
------------------------------------	------------------------------------	------------------------------------	------------------------------------	------------------------------------



COCONINO COUNTY

