

[Contact Us](#)

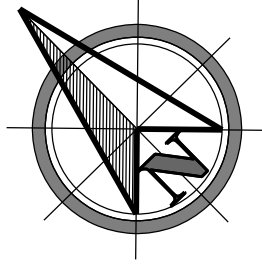
[Click on MilePost numbers to view Plans Index sheets](#)

xx Mile Post Numbers

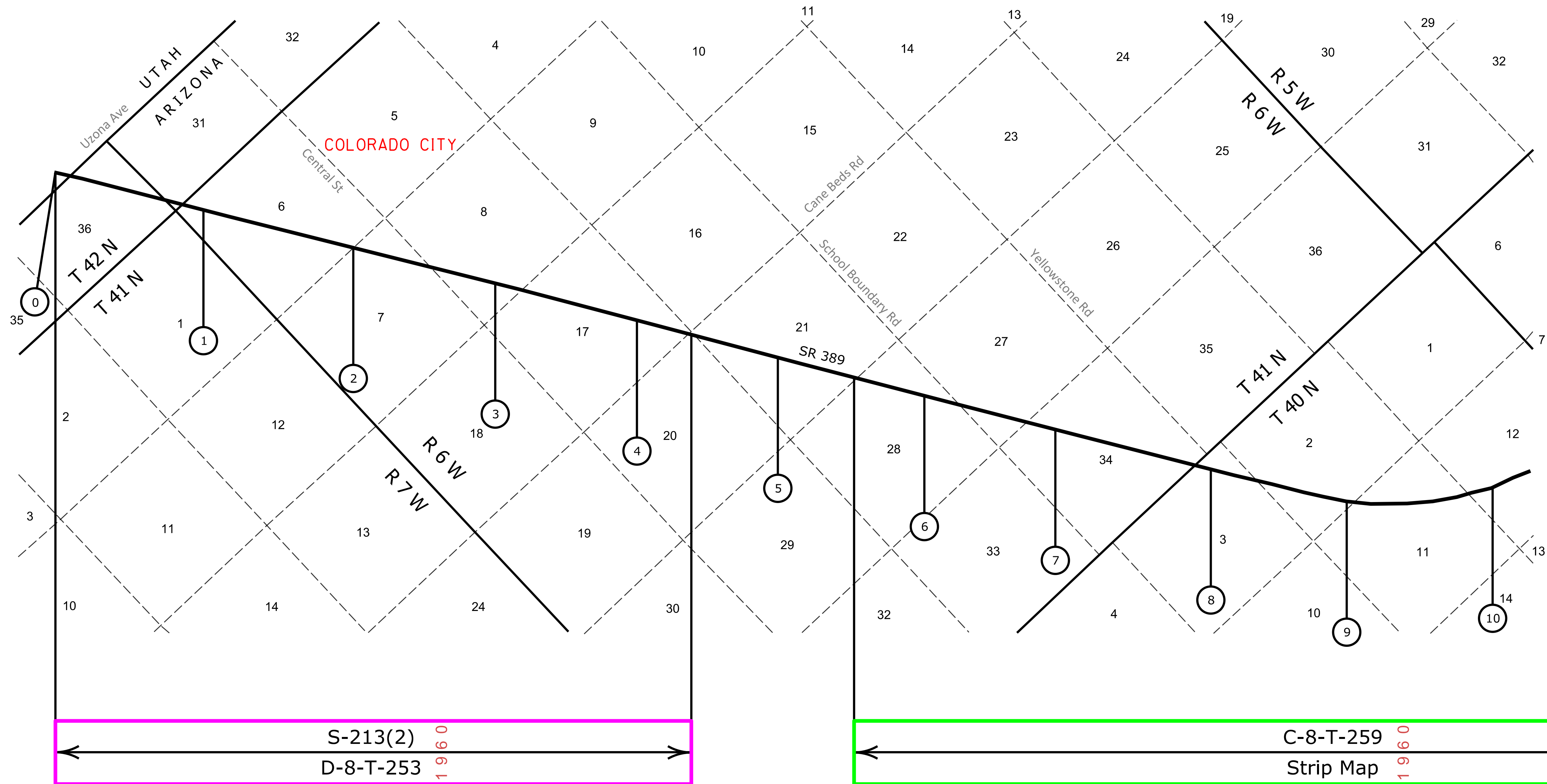
SR 389

Mile Post: 0 - 32





MOHAVE COUNTY



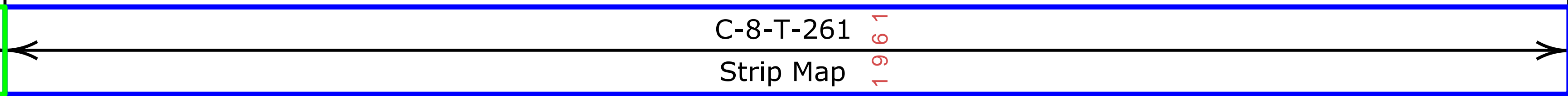
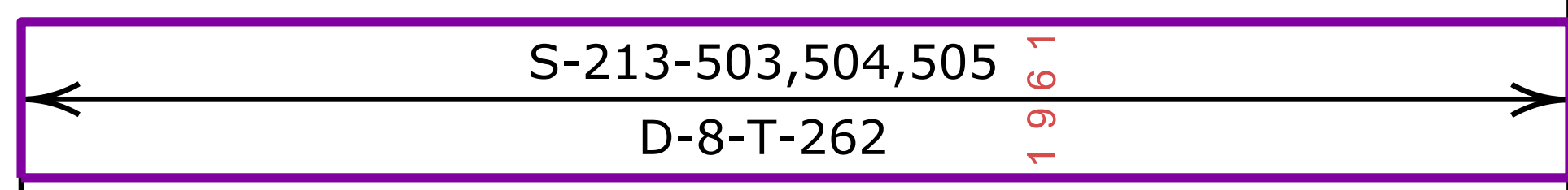
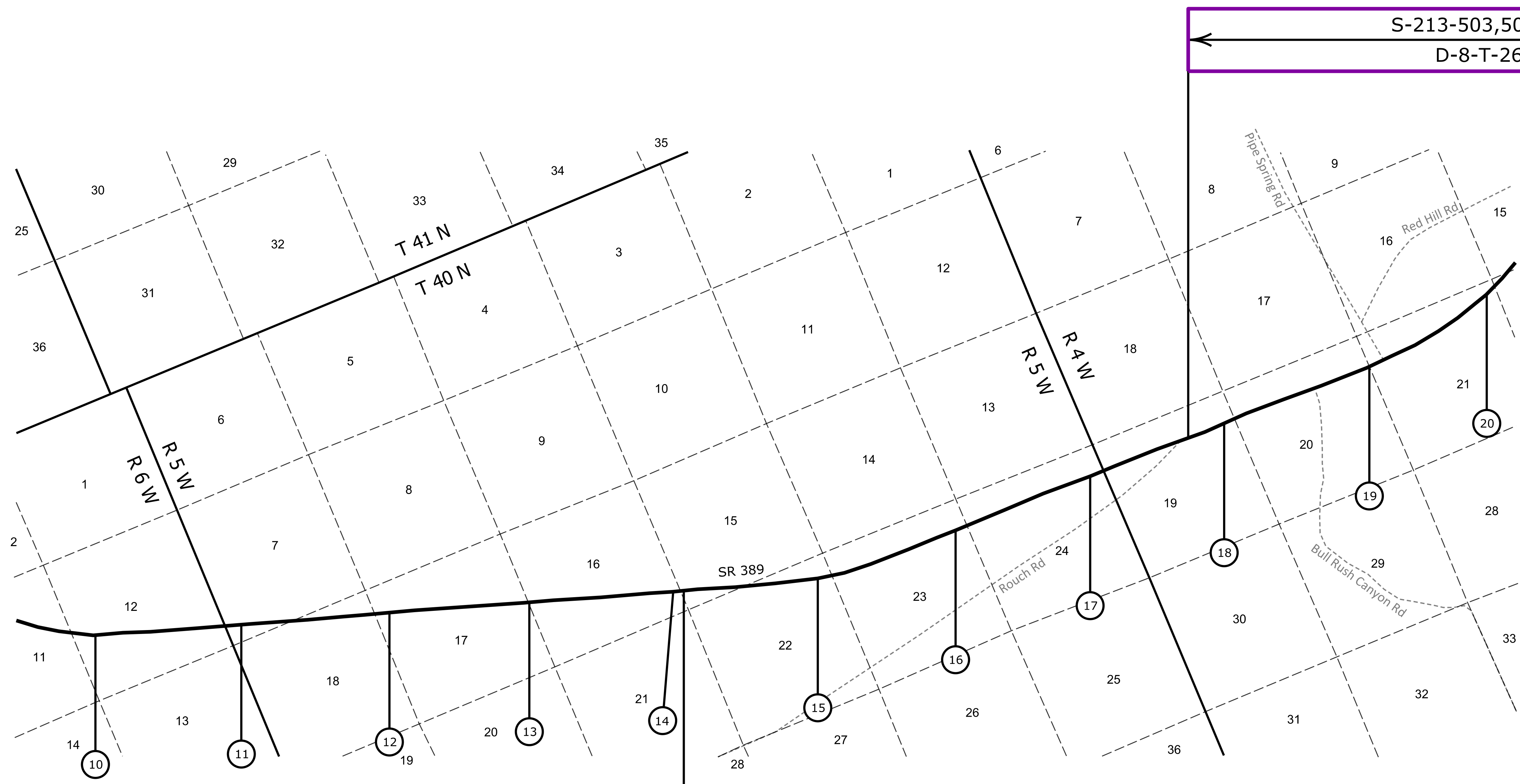
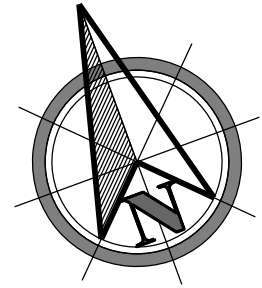
[Contact Us](#)

Click in colored box
to view Plans/Maps
ⓧ Mile Post Number



Right Of Way Index Map	ROUTE SR 389	MILEPOST 0 - 10
HIGHWAY NAME Short Creek - Fredonia Hwy		

MOHAVE COUNTY



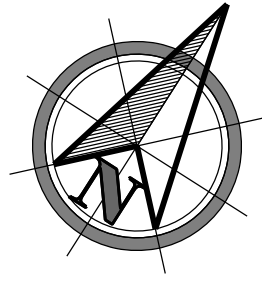
[Contact Us](#)

Click in colored box to view Plans/Maps
 (xx) Mile Post Number



Right Of Way Index Map	ROUTE SR 389	MILEPOST 10 - 20
HIGHWAY NAME Short Creek - Fredonia Hwy		

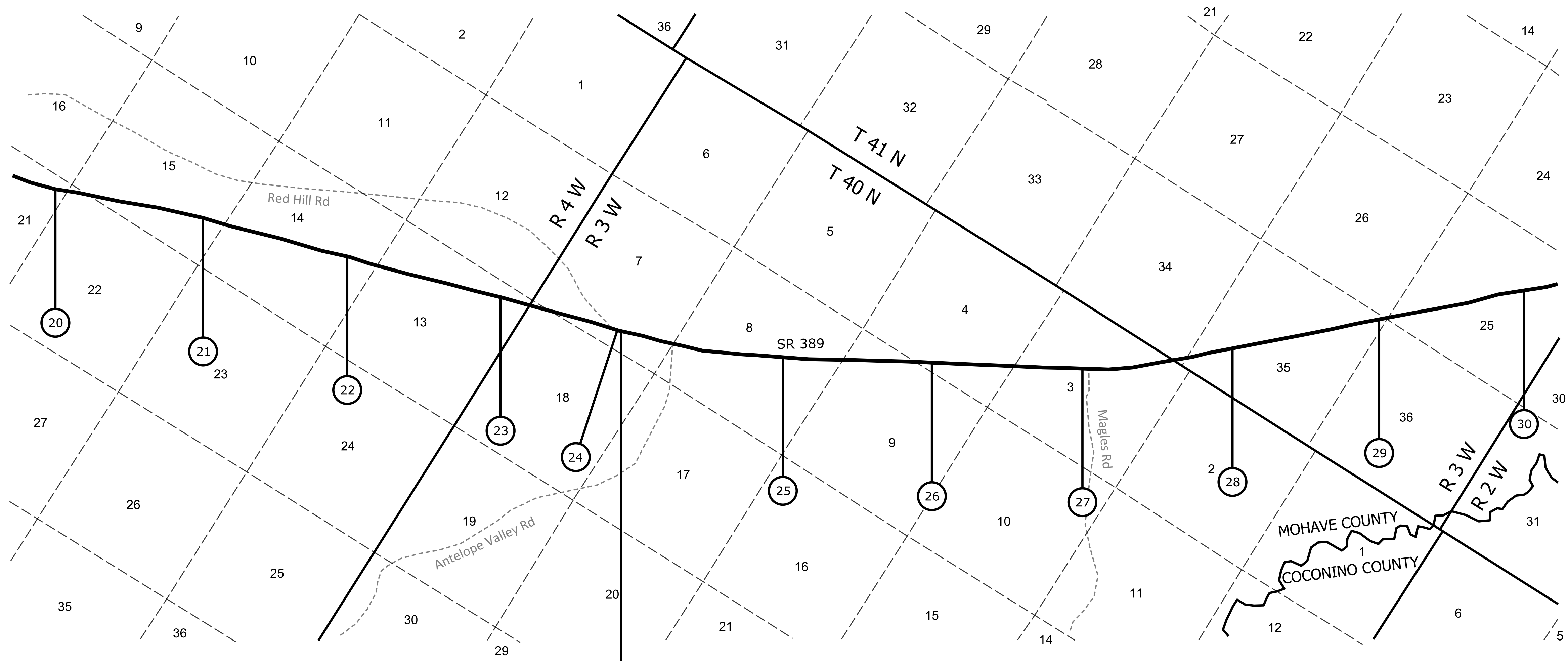
MOHAVE COUNTY



S-213-503,504,505

D-8-T-262

1961



C-8-T-261

Strip Map

1961

C-8-T-262

Strip Map

1960

C-8-T-261A

Strip Map

1961

C-8-T-262A

Strip Map

1960

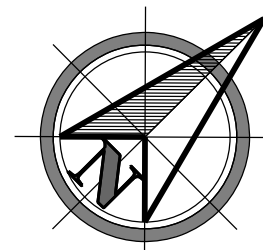
[Contact Us](#)

Click in colored box to view Plans/Maps

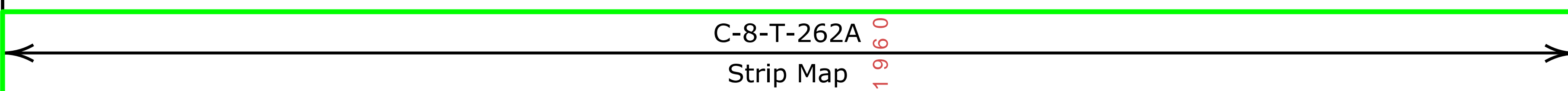
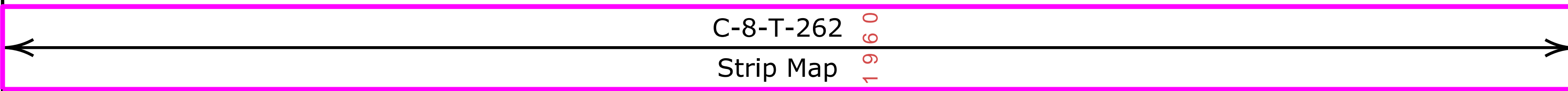
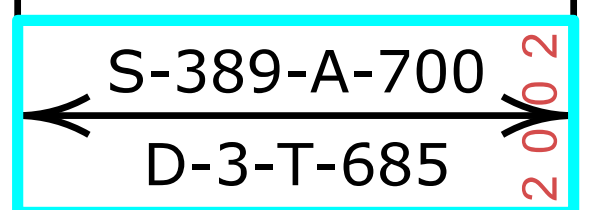
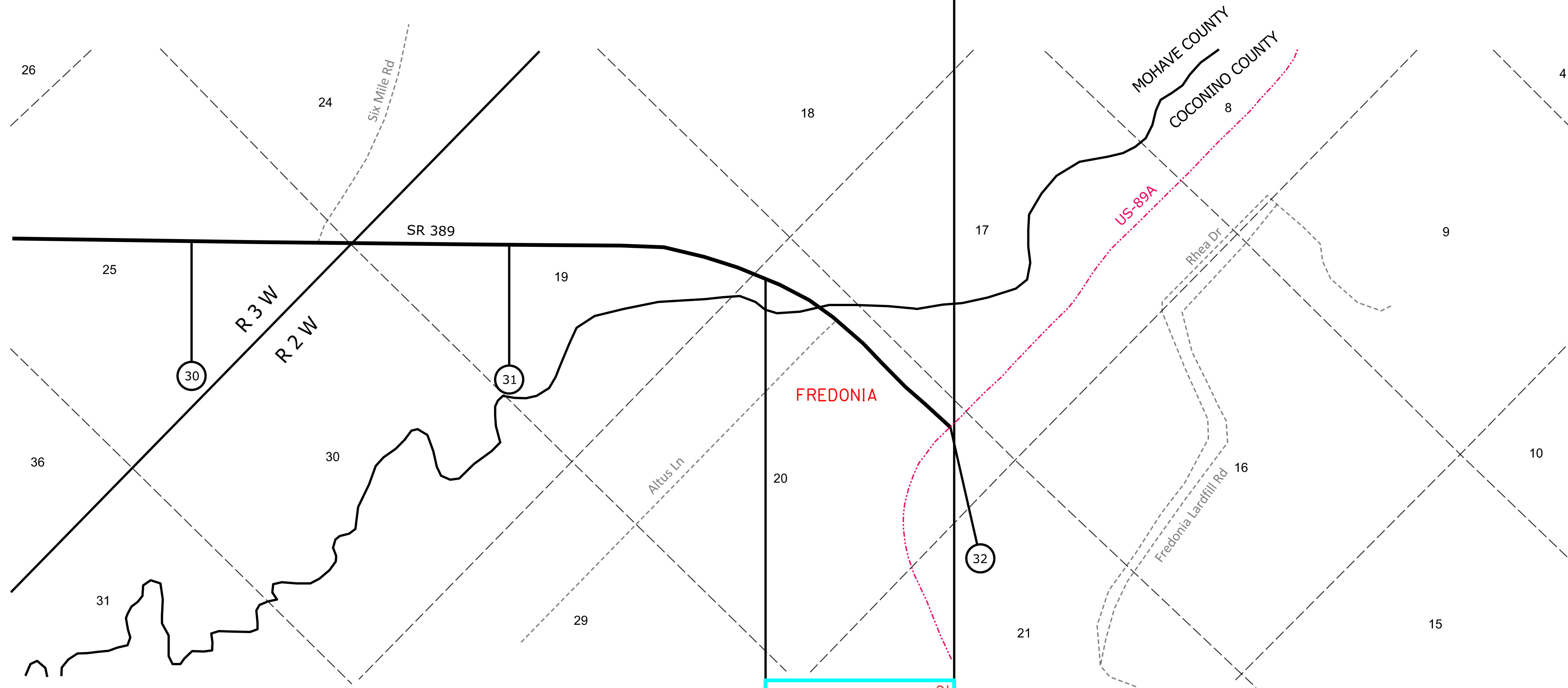
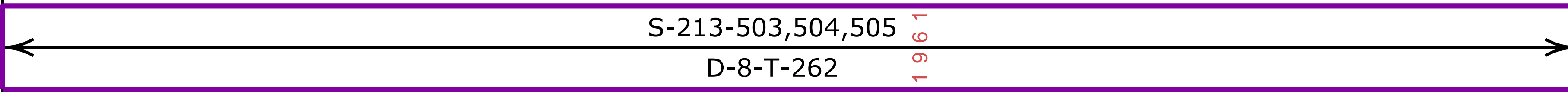
(xx) Mile Post Number



Right Of Way Index Map	ROUTE SR 389	MILEPOST 20 - 30
HIGHWAY NAME Short Creek - Fredonia Hwy		



T 41 N



[Contact Us](#)

Click in colored box to view Plans/Maps
xx Mile Post Number



Right Of Way Index Map	ROUTE SR 389	MILEPOST 30 - 32
HIGHWAY NAME Short Creek - Fredonia Hwy		