

[Click on MilePost numbers](#)
[to view Plans Index sheets](#)

ⓧ Mile Post Numbers

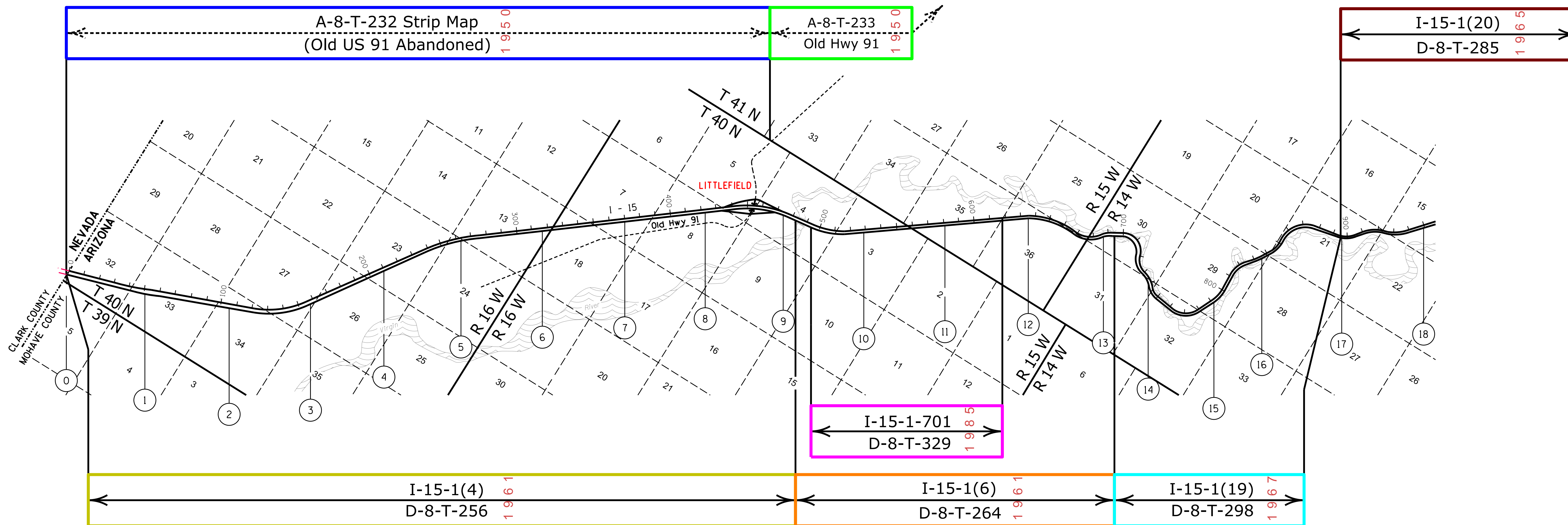
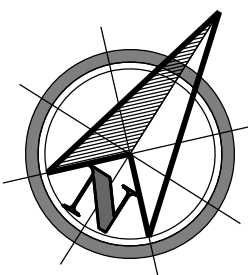
I - 15

Mile Post: 0 to 29

ADOT
Right Of Way Section



MOHAVE COUNTY



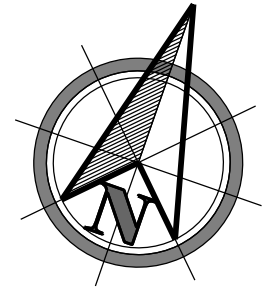
[Contact Us](#)

Click in colored box
to view Plans/Maps
ⓧ Mile Post Number

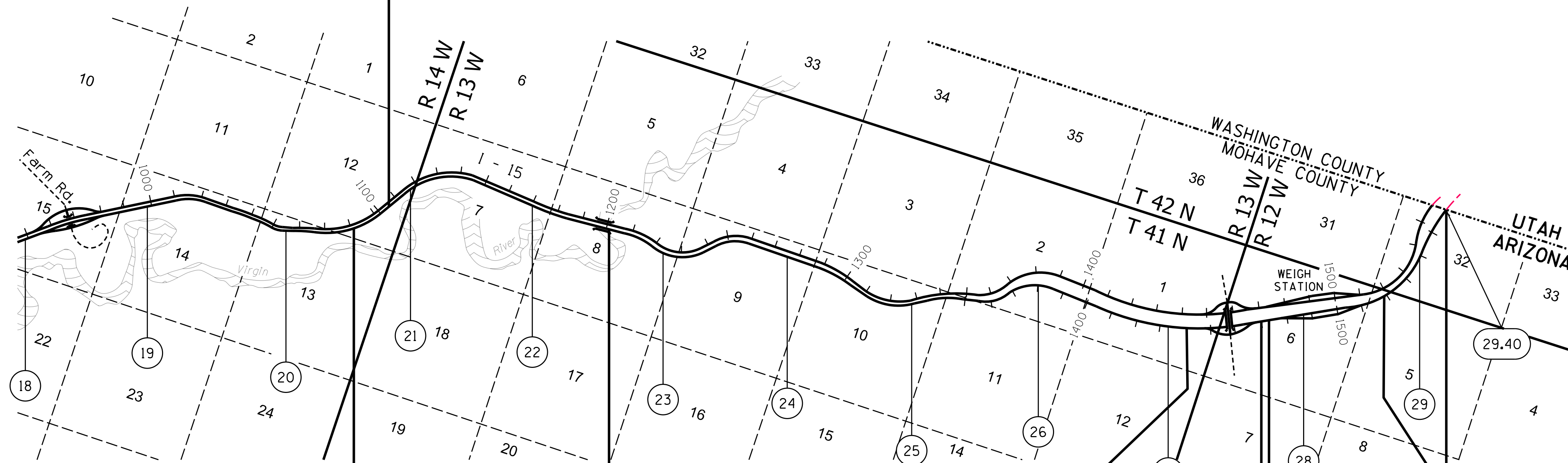


Right Of Way Index Map	ROUTE I - 15	MILEPOST 0.00 - 18.00
HIGHWAY NAME Mesquite - Littlefield - North Hwy.		

MOHAVE COUNTY



I-15-1(20)
D-8-T-285 1 9 6 5



I-15-1(15)
D-8-T-271 1 9 6 2

I-15-1-602
D-8-T-312 1 9 7 3

I-15-1-601
D-8-T-311 1 9 7 2

C-8-T-271A
Strip Map 1 9 6 2

I-15-1(11)
D-8-T-270 1 9 6 2

C-8-T-270A
Strip Map 1 9 6 2

[Contact Us](#)

Click in colored box
to view Plans/Maps
⊗ Mile Post Number



Right Of Way Index Map	ROUTE I - 15	MILEPOST 18.00 - 29.40
HIGHWAY NAME Mesquite - Littlefield - North Hwy.		