



# HIGHWAY USER REVENUE FUND

## Monthly Revenue Trends

### FY 2012 - 2013

(Dollars in Thousands)

|                 | FY 2012<br><u>Actual</u> | FY 2013<br><u>Actual</u> | <u>Change</u> | FY 2013 /2<br><u>Estimate</u> | <u>Change</u> |
|-----------------|--------------------------|--------------------------|---------------|-------------------------------|---------------|
| July            | \$100,997                | \$97,577                 | -3.4%         | \$100,769                     | -3.2%         |
| August          | 97,605                   | 101,151                  | 3.6%          | 99,303                        | 1.9%          |
| <b>Subtotal</b> | <b>\$198,601</b>         | <b>\$198,727</b>         | <b>0.1%</b>   | <b>\$200,072</b>              | <b>-0.7%</b>  |
| September       | 99,801                   |                          |               | 102,709                       |               |
| October         | 97,000                   |                          |               | 99,159                        |               |
| November        | 94,612                   |                          |               | 98,842                        |               |
| December        | 101,522                  |                          |               | 100,046                       |               |
| January         | 99,209                   |                          |               | 102,558                       |               |
| February        | 108,091                  |                          |               | 104,058                       |               |
| March           | 103,097                  |                          |               | 101,203                       |               |
| April           | 107,831                  |                          |               | 109,714                       |               |
| May             | 95,474                   |                          |               | 97,441                        |               |
| June            | 105,350                  |                          |               | 102,898                       |               |
| <b>Total /1</b> | <b>\$1,210,586</b>       | <b>\$198,727</b>         |               | <b>\$1,218,700</b>            |               |

NOTES: /1. Details may not add due to rounding.

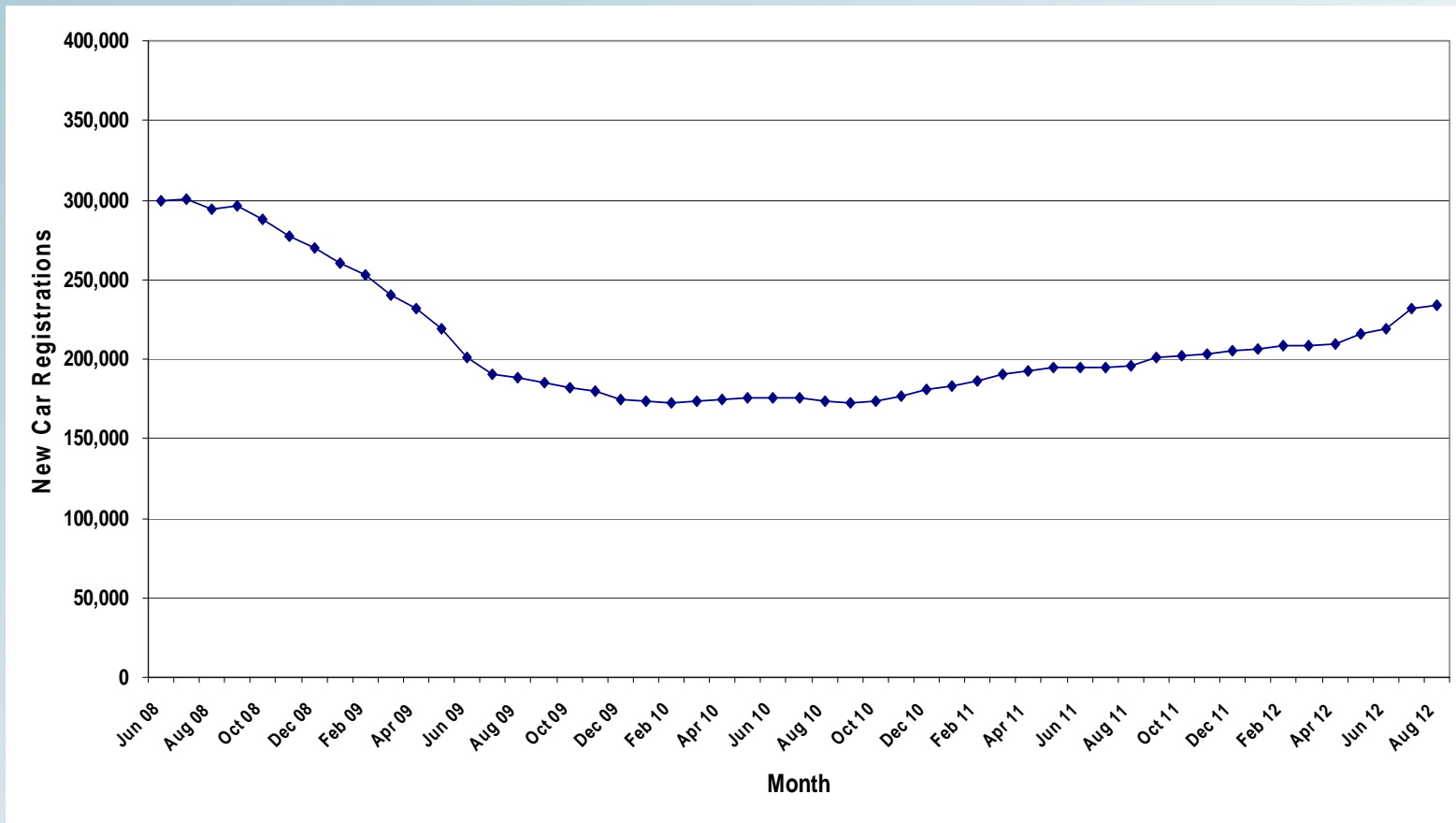
/2. Based on July 2012 forecast.



# HIGHWAY USER REVENUE FUND

## New Car Registrations

### 12 Month Moving Average

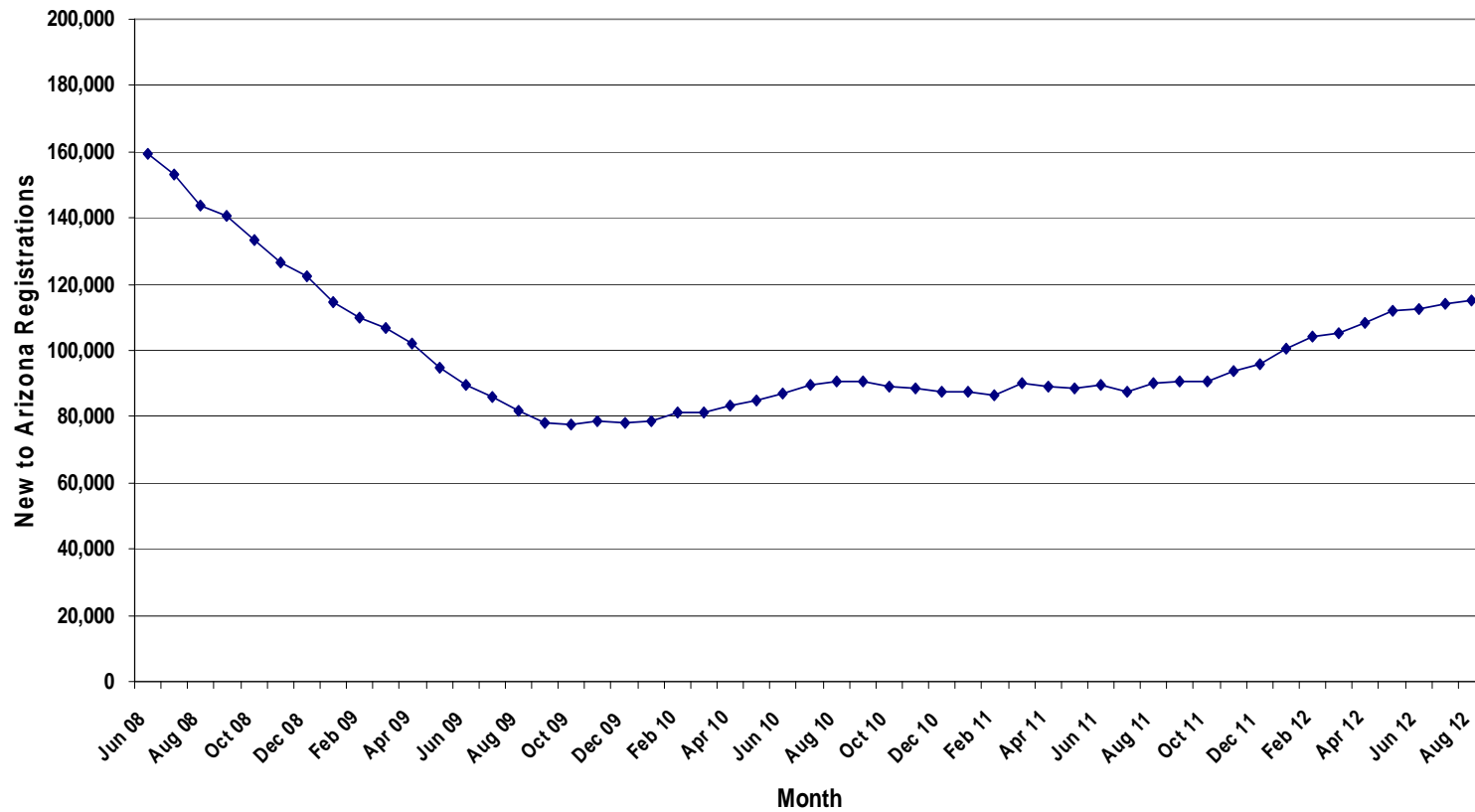




# HIGHWAY USER REVENUE FUND

## New to Arizona Registrations

### 12 Month Moving Average

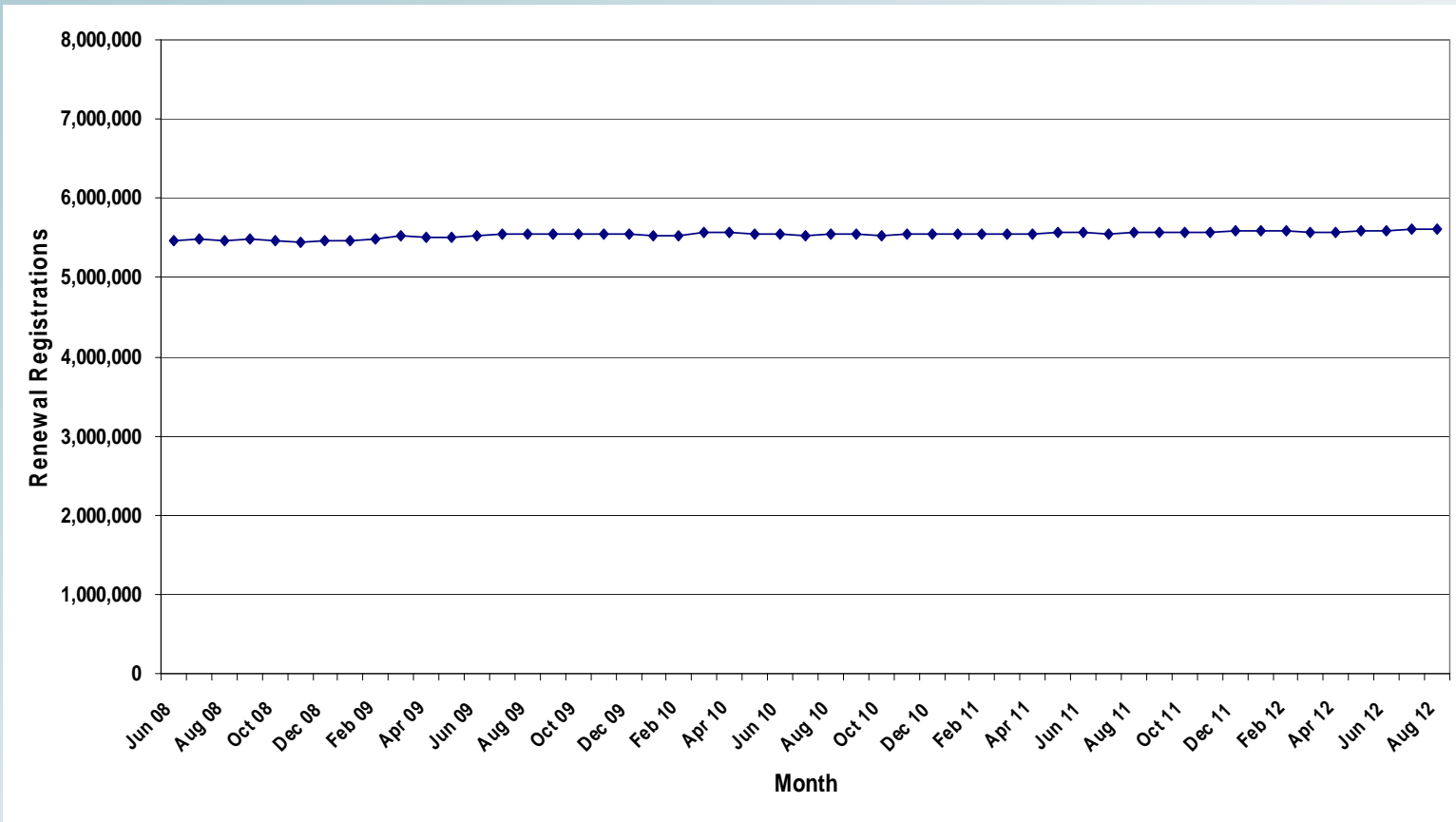




# HIGHWAY USER REVENUE FUND

## Renewal Registrations

### 12 Month Moving Average

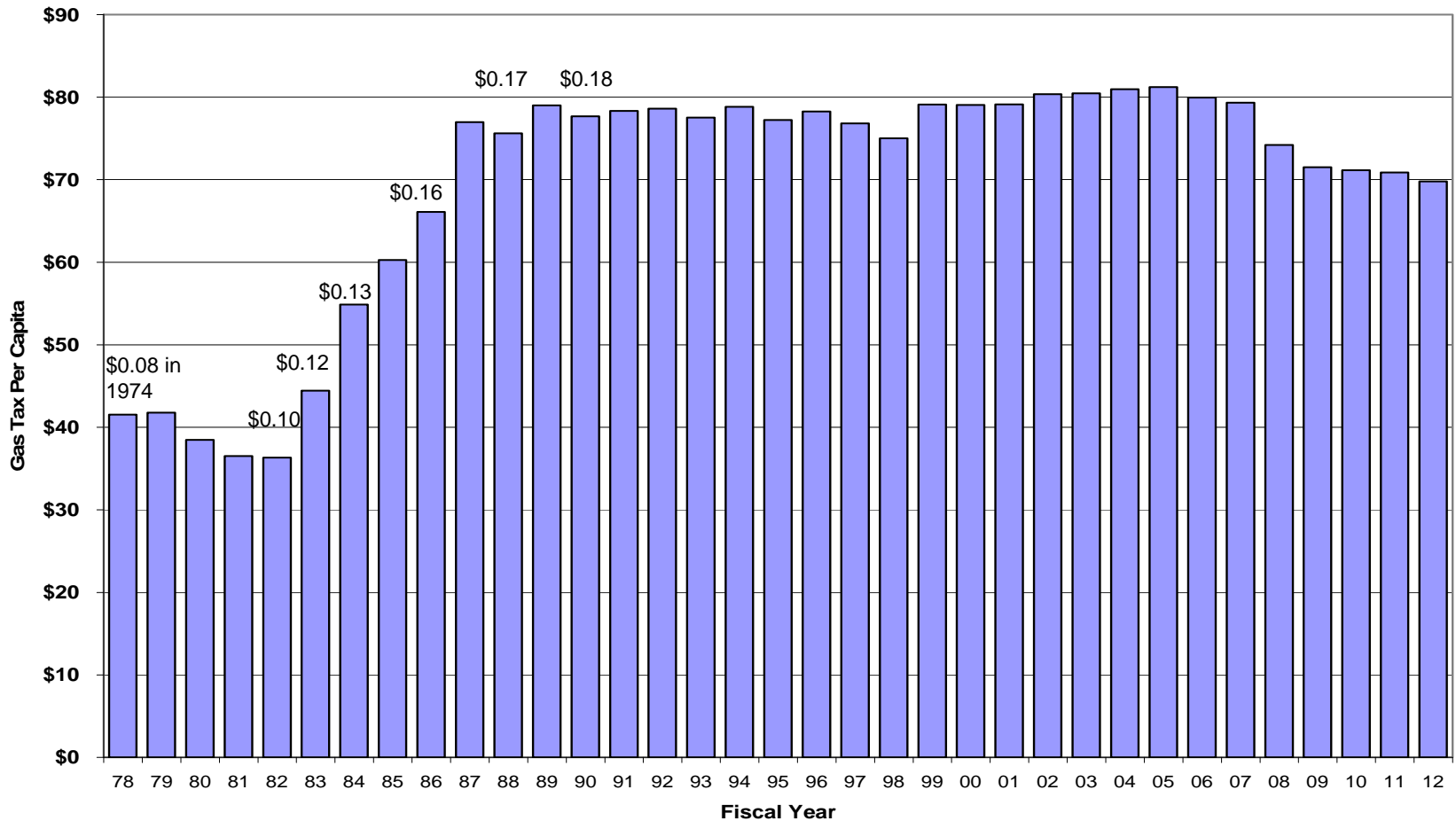




# HIGHWAY USER REVENUE FUND

## Gas Tax Per Capita

### FY 1978 - 2012





# MARICOPA REGIONAL AREA ROAD FUND

## Monthly Revenue Trend

### FY 2012 - 2013

(Dollars in Thousands)

|                    | FY 2012<br><u>Actual</u> | FY 2013<br><u>Actual</u> | <u>Change</u> | FY 2013 /2<br><u>Estimate</u> | <u>Change</u> |
|--------------------|--------------------------|--------------------------|---------------|-------------------------------|---------------|
| July               | \$26,768                 | \$28,653                 | 7.0%          | \$28,339                      | 1.1%          |
| August             | 24,901                   | 26,183                   | 5.1%          | 26,548                        | -1.4%         |
| <b>Subtotal /1</b> | <b>\$51,669</b>          | <b>\$54,836</b>          | <b>6.1%</b>   | <b>\$54,887</b>               | <b>-0.1%</b>  |
| September          | 26,469                   |                          |               | 27,405                        |               |
| October            | 26,695                   |                          |               | 27,753                        |               |
| November           | 25,223                   |                          |               | 26,978                        |               |
| December           | 26,073                   |                          |               | 27,681                        |               |
| January            | 31,510                   |                          |               | 33,100                        |               |
| February           | 26,076                   |                          |               | 26,780                        |               |
| March              | 26,187                   |                          |               | 27,927                        |               |
| April              | 30,304                   |                          |               | 30,620                        |               |
| May                | 26,617                   |                          |               | 28,619                        |               |
| June               | 27,348                   |                          |               | 28,750                        |               |
| <b>Total /1</b>    | <b>\$324,170</b>         | <b>\$54,836</b>          |               | <b>\$340,500</b>              |               |

NOTES: /1. Details may not add due to individual rounding.

/2. Forecast as of August 2012.



# CASH MANAGEMENT/INVESTMENT PROGRAM

## Investment Performance through August 31, 2012

(Dollars in Thousands)

| Investment Pools        | Monthly<br>Average<br>Invested<br>Balance | Percent<br>Invested | August               |                  | Year-To-Date (YTD)   |              |
|-------------------------|---|---------------------|----------------------|------------------|----------------------|--------------|
|                         |   |                     | Interest<br>Received | Current<br>Yield | Interest<br>Received | YTD<br>Yield |
| <b>Pool 2</b>           |   |                     |                      |                  |                      |              |
| Highway                 | \$211,695                                 | 99.70%              | \$189                | 1.02%            | \$379                | 1.07%        |
| HURF Bond Redemption    | \$43,391                                  | 99.98%              | \$37                 | 1.02%            | \$63                 | 1.07%        |
| FY11A HURF Proceeds     | \$94,446                                  | 99.91%              | \$84                 | 1.02%            | \$177                | 1.07%        |
| FY11A GAN Proceeds      | \$97,596                                  | 99.92%              | \$87                 | 1.02%            | \$182                | 1.07%        |
| Other/1                 | \$95,760                                  | 99.78%              | \$87                 | 1.02%            | \$184                | 1.07%        |
| <b>Subtotal</b>         | <b>\$542,888</b>                          | <b>99.81%</b>       | <b>\$483</b>         | <b>1.02%</b>     | <b>\$984</b>         | <b>1.07%</b> |
| <b>Pool 3</b>           |   |                     |                      |                  |                      |              |
| HELP/2                  | \$76,316                                  | 99.93%              | \$70                 | 1.09%            | \$114                | 0.89%        |
| Other/3                 | \$6,924                                   | 98.82%              | \$6                  | 1.09%            | \$12                 | 0.89%        |
| <b>Subtotal</b>         | <b>\$83,240</b>                           | <b>99.84%</b>       | <b>\$76</b>          | <b>1.09%</b>     | <b>\$127</b>         | <b>0.89%</b> |
| <b>Pool 4</b>           |   |                     |                      |                  |                      |              |
| 2010 RARF Proceeds      | \$21,415                                  | 99.38%              | \$15                 | 0.80%            | \$33                 | 0.75%        |
| 2011 RARF Proceeds      | \$180,292                                 | 99.96%              | \$122                | 0.80%            | \$227                | 0.75%        |
| RARF Bond Redemption    | \$14,421                                  | 99.99%              | \$9                  | 0.80%            | \$12                 | 0.75%        |
| Regional Area Road Fund | \$387,716                                 | 99.90%              | \$263                | 0.80%            | \$477                | 0.75%        |
| <b>Subtotal</b>         | <b>\$603,844</b>                          | <b>99.90%</b>       | <b>\$409</b>         | <b>0.80%</b>     | <b>\$749</b>         | <b>0.75%</b> |
| <b>Total</b>            | <b>\$1,229,972</b>                        | <b>99.86%</b>       | <b>\$968</b>         | <b>0.92%</b>     | <b>\$1,859</b>       | <b>0.90%</b> |

Note: Numbers may not add due to rounding

Source: State Treasurer's Office Statement of Account

/1 Includes Aviation, HURF, Equipment, STAN and GAN redemption funds.

/2 HELP: Highway Expansion and Extension Loan Program

/3 Includes Safety Enforcement, Storage Tank, Magazine, Economic Strength and Special Plates funds.