



HIGHWAY USER REVENUE FUND

Monthly Revenue Trends

FY 2011 - 2012

(Dollars in Thousands)

	FY 2011 <u>Actual</u>	FY 2012 <u>Actual</u>	<u>Change</u>	FY 2012 /2 <u>Estimate</u>	<u>Change</u>
July	\$100,345	\$100,997	0.6%	\$99,596	1.4%
August	99,049	97,605	-1.5%	99,229	-1.6%
Subtotal	\$199,395	\$198,601	-0.4%	\$198,825	-0.1%
September	98,018			100,336	
October	96,885			97,734	
November	96,148			97,202	
December	101,786			100,600	
January	102,690			100,641	
February	103,634			102,955	
March	98,584			105,022	
April	110,715			109,483	
May	95,047			99,690	
June	102,172			103,812	
Total /1	\$1,205,073	\$198,601		\$1,216,300	

NOTES: /1. Details may not add due to rounding.

/2. Based on July 2011 forecast.



HIGHWAY USER REVENUE FUND

Fiscal Year-to-Date Revenue Trends By Category

FY 2011 - 2012

(Dollars in Thousands)

Category	FY 2011 Actual	FY 2012 Actual	Change	FY 2012 /2 Estimate	Change
Gas Tax	\$74,642	\$73,780	-1.2%	\$74,890	-1.5%
Use Fuel Tax	28,468	30,904	8.6%	28,935	6.8%
Motor Carrier	5,330	5,204	-2.4%	5,001	4.1%
Veh. Lic. Tax	57,133	54,710	-4.2%	58,978	-7.2%
Registration	23,814	23,420	-1.7%	21,941	6.7%
Other	10,008	10,583	5.7%	9,080	16.6%
Total /1	\$199,395	\$198,601	-0.4%	\$198,825	-0.1%

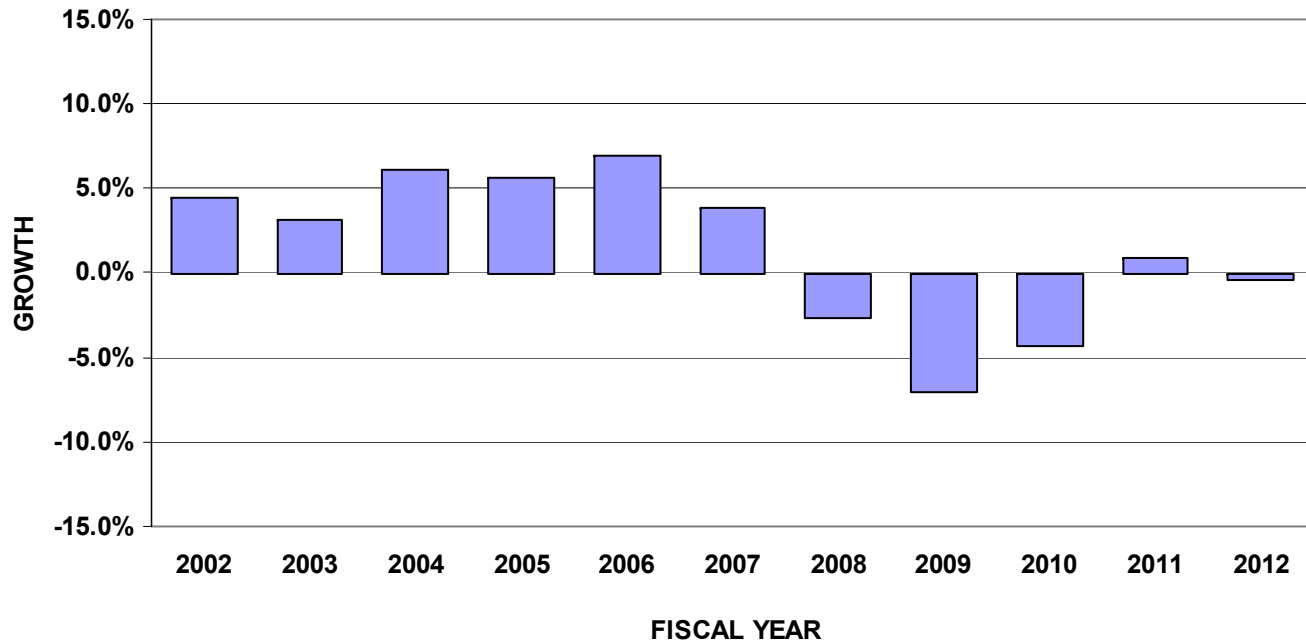
NOTES: /1. Details may not add due to individual rounding.
 /2. Based on July 2011 forecast.



HIGHWAY USER REVENUE FUND

Annual Revenue Trends

FY 2002- 2012



NOTE: 1. FY 2012 through August 2011.



MARICOPA REGIONAL AREA ROAD FUND

Monthly Revenue Trend

FY 2011 - 2012

(Dollars in Thousands)

	FY 2011 <u>Actual</u>	FY 2012 <u>Actual</u>	<u>Change</u>	FY 2012 /2 <u>Estimate</u>	<u>Change</u>
July	\$24,620	\$26,768	8.7%	\$26,810	-0.2%
August	23,634			25,029	
September	23,898			25,750	
October	24,784			25,954	
November	24,431			25,680	
December	25,027			26,207	
January	30,149			31,476	
February	24,725			25,157	
March	25,816			26,287	
April	28,458			28,863	
May	26,581			27,029	
June	27,110			27,358	
Total /1	\$309,234	\$26,768		\$321,600	

NOTES: /1. Details may not add due to individual rounding.

/2. Forecast as of July 2011.



MARICOPA REGIONAL AREA ROAD FUND

Fiscal Year-to-Date Revenue Trends by Category

FY 2011 - 2012

(Dollars in Thousands)

<u>Category</u>	<u>FY 2011 Actual</u>	<u>FY 2012 Actual</u>	<u>Change</u>	<u>FY 2012 /2 Estimate</u>	<u>Change</u>
Retail Sales	\$11,825	\$12,845	8.6%	\$12,669	1.4%
Contracting	2,340	2,656	13.5%	2,888	-8.0%
Utilities	2,674	3,090	15.6%	2,886	7.1%
Restaurant & Bar	2,361	2,610	10.5%	2,557	2.1%
Rental of Real Prop.	3,041	2,985	-1.8%	3,050	-2.1%
Rental of Pers. Prop.	922	965	4.6%	962	0.3%
Other	1,455	1,617	11.1%	1,798	-10.1%
Total /1	\$24,620	\$26,768	8.7%	\$26,810	-0.2%

NOTES: /1. Details may not add due to individual rounding.

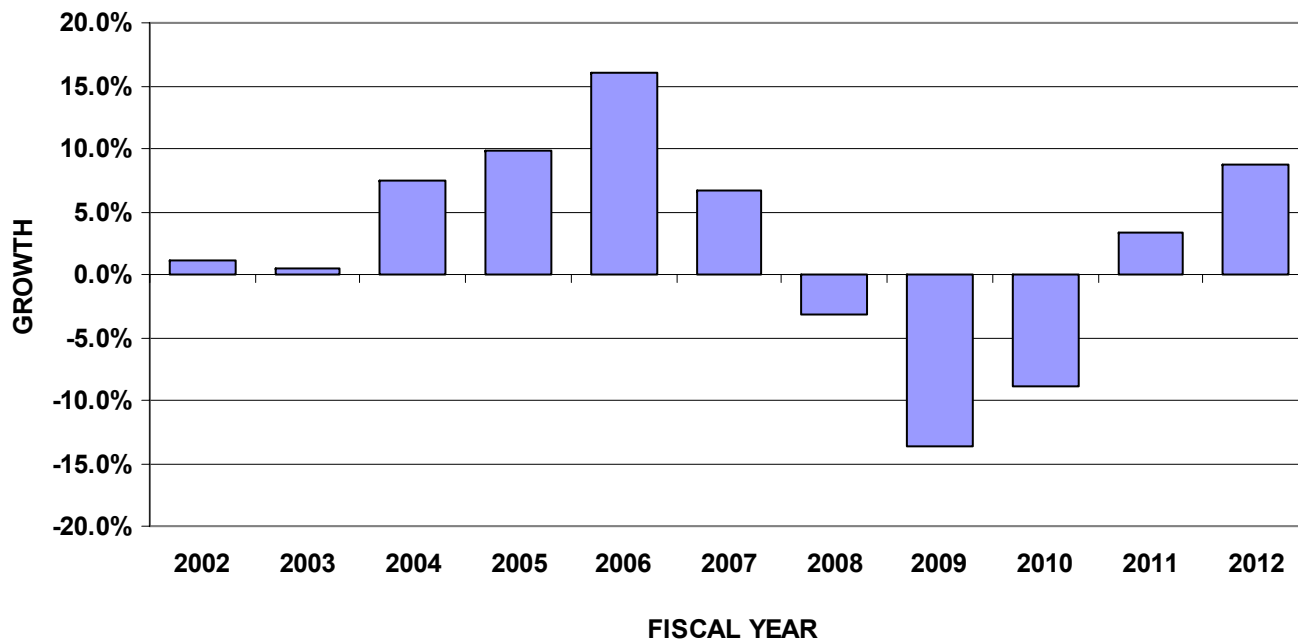
/2. Forecast as of July 2011.



MARICOPA REGIONAL AREA ROAD FUND

Annual Revenue Trends

FY 2002 - 2012



NOTE: 1. FY 2012 through July 2011.



HIGHWAY EXPANSION AND EXTENSION LOAN PROGRAM (HELP)



HELP Fund Cash Status as of August 2011 (Inception to Date)

Revenues:

Federal Capitalization	\$46,185,974
State Match	2,791,729
Board Funding Obligation, Series 1999	100,000,000
Board Funding Obligation, Series 2000	100,000,000
Board Funding Obligation, Series 2002	40,000,000
Board Funding Obligation, Series 2003	140,000,000
Board Funding Obligation, Series 2007	50,000,000
Highway Fund Transfer	20,000,000
General Fund Appropriation	20,000,000
Interest Received on Loans	27,016,096
Interest Income	42,120,164
Principal Repaid on Loans	543,667,623
Total Revenues	<u><u>\$1,131,781,586</u></u>

Expenditures:

Loan Draws	\$545,578,522
BFO Payment to Treasurer - Principal	430,000,000
BFO Payment to Treasurer - Interest	39,667,756
Highway Fund Repayment	20,000,000
General Fund Reversion	20,000,000
Administration	2,199,158
Total Expenditures	<u><u>\$1,057,445,436</u></u>

Cash Balance as of 08/31/11	<u><u>\$74,336,150</u></u>
------------------------------------	-----------------------------------