



# HIGHWAY USER REVENUE FUND

## Monthly Revenue Trends

### FY 2011 - 2012

(Dollars in Thousands)

	FY 2011 <u>Actual</u>	FY 2012 <u>Actual</u>	<u>Change</u>	FY 2012 /2 <u>Estimate</u>	<u>Change</u>
July	\$100,345	\$100,997	0.6%	\$99,596	1.4%
August	99,049	97,605	-1.5%	99,229	-1.6%
September	98,018	99,801	1.8%	100,336	-0.5%
October	96,885	97,000	0.1%	97,734	-0.8%
November	96,148	94,612	-1.6%	97,202	-2.7%
December	101,786	101,522	-0.3%	100,600	0.9%
January	102,690	99,209	-3.4%	100,641	-1.4%
<b>Subtotal</b>	<b>\$694,922</b>	<b>\$690,744</b>	<b>-0.6%</b>	<b>\$695,338</b>	<b>-0.7%</b>
February	103,634			102,955	
March	98,584			105,022	
April	110,715			109,483	
May	95,047			99,690	
June	102,172			103,812	
<b>Total /1</b>	<b>\$1,205,073</b>	<b>\$690,744</b>		<b>\$1,216,300</b>	

NOTES: /1. Details may not add due to rounding.

/2. Based on July 2011 forecast.



# HIGHWAY USER REVENUE FUND

## Fiscal Year-to-Date Revenue Trends By Category

### FY 2011 - 2012

(Dollars in Thousands)

<b>Category</b>	<b>FY 2011 Actual</b>	<b>FY 2012 Actual</b>	<b>Change</b>	<b>FY 2012 /2 Estimate</b>	<b>Change</b>
Gas Tax	\$265,038	\$263,235	-0.7%	\$266,020	-1.0%
Use Fuel Tax	102,258	103,793	1.5%	106,251	-2.3%
Motor Carrier	21,417	21,531	0.5%	20,788	3.6%
Veh. Lic. Tax	186,796	181,031	-3.1%	188,126	-3.8%
Registration	89,566	88,408	-1.3%	84,607	4.5%
Other	29,846	32,746	9.7%	29,546	10.8%
<b>Total /1</b>	<b>\$694,922</b>	<b>\$690,744</b>	<b>-0.6%</b>	<b>\$695,338</b>	<b>-0.7%</b>

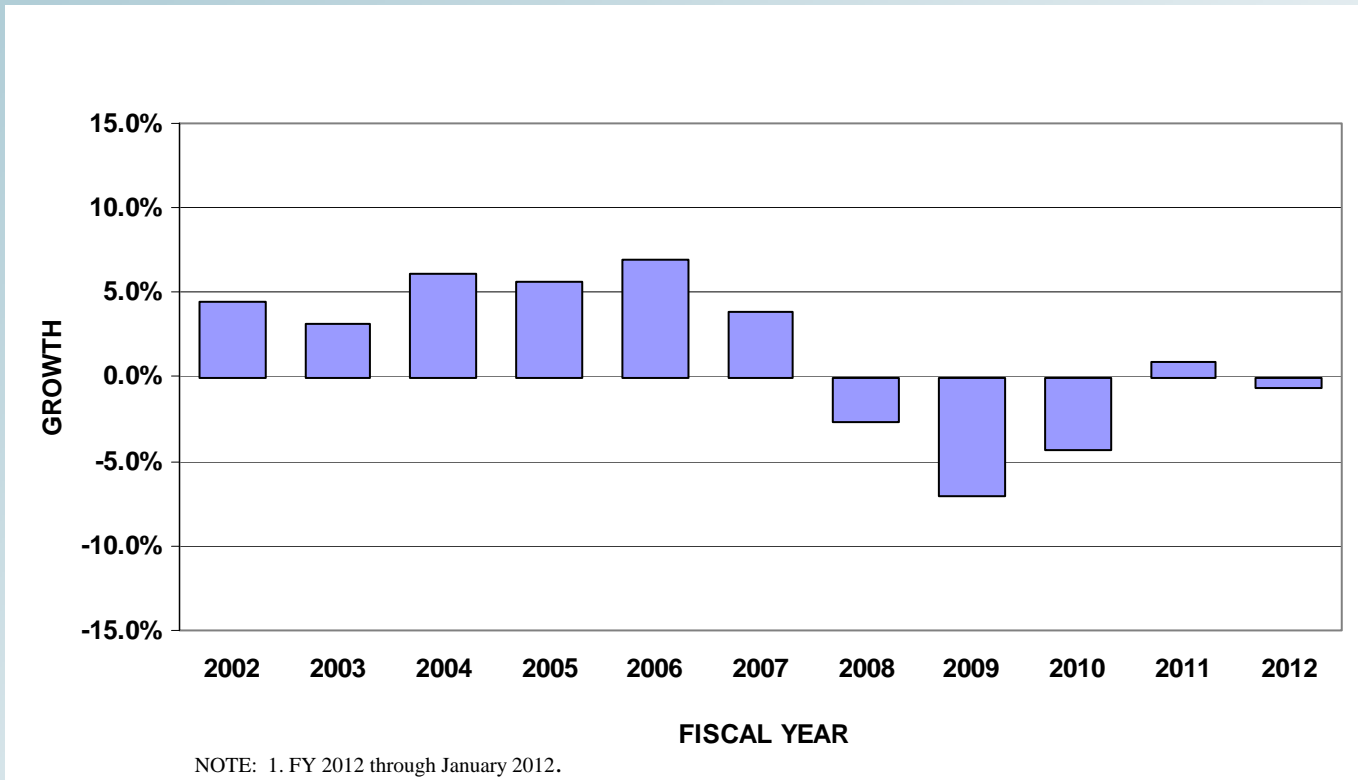
NOTES: /1. Details may not add due to individual rounding.  
/2. Based on July 2011 forecast.



# HIGHWAY USER REVENUE FUND

## Annual Revenue Trends

### FY 2002- 2012





# MARICOPA REGIONAL AREA ROAD FUND

## Monthly Revenue Trend

### FY 2011 - 2012

(Dollars in Thousands)

	<u>FY 2011 Actual</u>	<u>FY 2012 Actual</u>	<u>Change</u>	<u>FY 2012 /2 Estimate</u>	<u>Change</u>
July	\$24,620	\$26,768	8.7%	\$26,810	-0.2%
August	23,634	24,901	5.4%	25,029	-0.5%
September	23,898	26,469	10.8%	25,750	2.8%
October	24,784	26,695	7.7%	25,954	2.9%
November	24,431	25,223	3.2%	25,680	-1.8%
December	25,027	26,073	4.2%	26,207	-0.5%
January	30,149	31,510	4.5%	31,476	0.1%
<b>Subtotal /1</b>	<b>\$176,543</b>	<b>\$187,638</b>	<b>6.3%</b>	<b>\$186,906</b>	<b>0.4%</b>
February	24,725			25,157	
March	25,816			26,287	
April	28,458			28,863	
May	26,581			27,029	
June	27,110			27,358	
<b>Total /1</b>	<b>\$309,234</b>	<b>\$187,638</b>		<b>\$321,600</b>	

NOTES: /1. Details may not add due to individual rounding.  
 /2. Forecast as of July 2011.



# MARICOPA REGIONAL AREA ROAD FUND

## Fiscal Year-to-Date Revenue Trends by Category

### FY 2011 - 2012

(Dollars in Thousands)

<u>Category</u>	<u>FY 2011 Actual</u>	<u>FY 2012 Actual</u>	<u>Change</u>	<u>FY 2012 /2 Estimate</u>	<u>Change</u>
Retail Sales	\$86,675	\$93,201	7.5%	\$92,040	1.3%
Contracting	16,401	18,196	10.9%	18,716	-2.8%
Utilities	19,457	19,911	2.3%	19,567	1.8%
Restaurant & Bar	17,084	18,582	8.8%	17,997	3.2%
Rental of Real Prop.	19,803	20,367	2.8%	20,383	-0.1%
Rental of Pers. Prop.	6,582	6,602	0.3%	6,668	-1.0%
Other	10,541	10,779	2.3%	11,535	-6.6%
<b>Total /1</b>	<b>\$176,543</b>	<b>\$187,638</b>	<b>6.3%</b>	<b>\$186,906</b>	<b>0.4%</b>

NOTES: /1. Details may not add due to individual rounding.

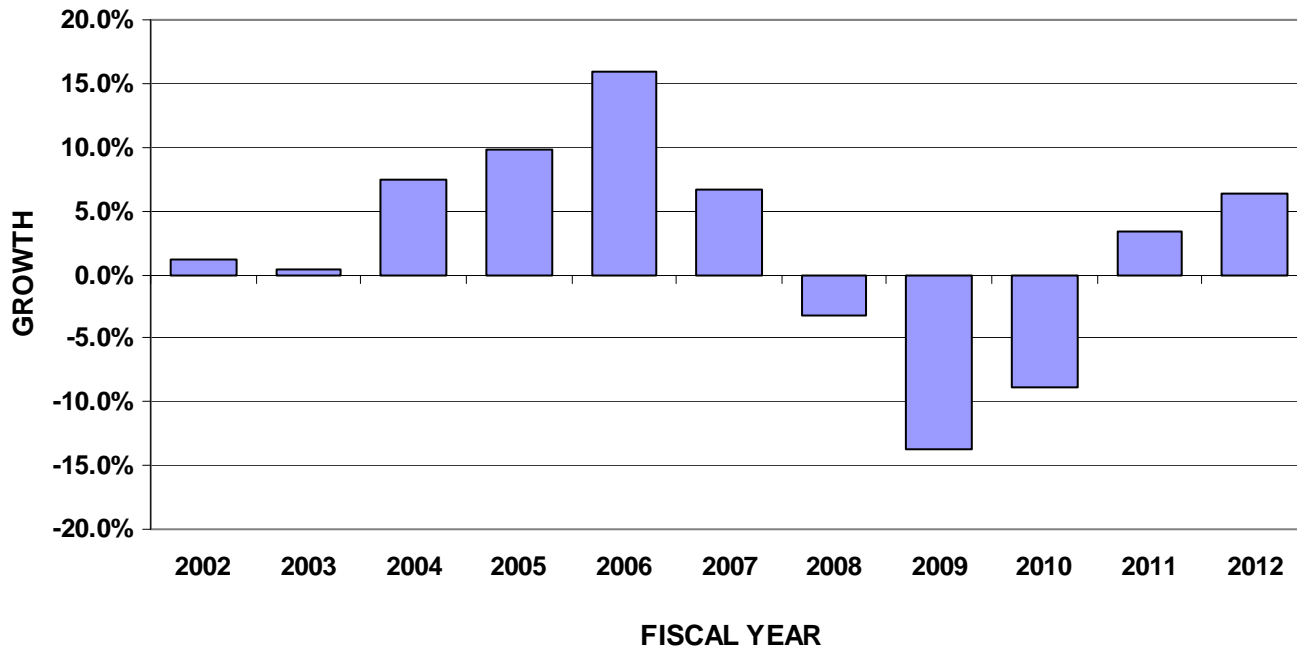
/2. Forecast as of July 2011.



# MARICOPA REGIONAL AREA ROAD FUND

## Annual Revenue Trends

### FY 2002 - 2012





# AVIATION FUND

## Monthly Revenue Trend

### FY 2011 - 2012

(Dollars in Thousands)

	<u>FY 2011</u> <u>Actual</u>	<u>FY 2012</u> <u>Actual</u>	<u>Change</u>	<u>FY 2012</u> <sup>/1</sup> <u>Estimate</u>	<u>Change</u>
July	\$549	\$565	2.9%	\$776	-27.2%
August	\$2,764	\$478	-82.7%	\$503	-5.0%
September	\$362	\$677	87.4%	\$600	13.0%
October	\$715	\$1,156	61.8%	\$835	38.5%
November	\$6,573	\$5,374	-18.2%	\$1,506	256.9%
December	\$732	\$624	-14.8%	\$4,091	-84.8%
January	\$2,534	\$2,026	-20.1%	\$2,561	-20.9%
<b>Subtotal</b> <sup>/2</sup>	\$14,229	\$10,900	-23.4%	\$10,871	0.3%
February	\$3,108			\$2,630	
March	\$1,515			\$2,370	
April	\$1,145			\$733	
May	\$4,227			\$2,955	
June	\$810			\$3,355	
<b>Total</b> <sup>/2</sup>	\$25,035	\$10,900		\$22,914	

**NOTES:**

1/ Forecast as of July 2011.

2/ Details may not add due to rounding.



# AVIATION FUND

## Fiscal Year-to-Date Revenue Trends by Category

### FY 2011 - 2012

(Dollars in Thousands)

<b>Category</b>	<b>FY 2011</b>	<b>FY 2012</b>	<b>Change</b>	<b>FY 2012 <sup>1</sup></b>	<b>Change</b>
	<b>Actual</b>	<b>Actual</b>		<b>Estimate</b>	
Flight Property Tax	\$5,030	\$5,504	9.4%	\$4,398	25.2%
Aircraft Registration	\$3,327	\$3,973	19.4%	\$2,884	37.8%
Aviation Fuel Tax	\$267	\$186	-30.2%	\$203	-8.2%
Grand Canyon Airport	\$603	\$551	-8.6%	\$657	-16.1%
Federal Grants	\$4,689	\$270	-94.2%	\$2,549	-89.4%
Investment Interest & Loans	\$314	\$417	32.7%	\$175	138.5%
Other	(\$1)	(\$1)	72.9%	\$6	-114.8%
<b>Total <sup>2</sup></b>	<b>\$14,229</b>	<b>\$10,900</b>	<b>-23.4%</b>	<b>\$10,871</b>	<b>0.3%</b>

**NOTES:**

1/ Forecast as of July 2011

2/ Details may not add due to rounding.





## HIGHWAY EXPANSION AND EXTENSION LOAN PROGRAM (HELP)



### HELP Fund Cash Status as of January 2012 (Inception to Date)

**Revenues:**

Federal Capitalization	\$46,185,974
State Match	2,791,729
Board Funding Obligation, Series 1999	100,000,000
Board Funding Obligation, Series 2000	100,000,000
Board Funding Obligation, Series 2002	40,000,000
Board Funding Obligation, Series 2003	140,000,000
Board Funding Obligation, Series 2007	50,000,000
Highway Fund Transfer	20,000,000
General Fund Appropriation	20,000,000
Interest Received on Loans	27,026,978
Interest Income	42,399,724
Principal Repaid on Loans	544,017,623
<b>Total Revenues</b>	<b><u><u>\$1,132,422,028</u></u></b>

**Expenditures:**

Loan Draws	\$545,578,522
BFO Payment to Treasurer - Principal	430,000,000
BFO Payment to Treasurer - Interest	39,667,756
Highway Fund Repayment	20,000,000
General Fund Reversion	20,000,000
Administration	2,225,870
<b>Total Expenditures</b>	<b><u><u>\$1,057,472,149</u></u></b>

<b>Cash Balance as of 1/31/12</b>	<b><u><u>\$74,949,879</u></u></b>
-----------------------------------	-----------------------------------