

# HIGHWAY USER REVENUE FUND

## Monthly Revenue Trends

### FY 2010 - 2011

(Dollars in Thousands)

	<b>FY 2010</b>	<b>FY 2011</b>		<b>FY 2011 /2</b>	
	<u>Actual</u>	<u>Actual</u>	<u>Change</u>	<u>Estimate</u>	<u>Change</u>
July	\$97,763	\$100,345	2.6%	\$98,405	2.0%
August	91,285	99,049	8.5%	97,840	1.2%
September	102,542	98,018	-4.4%	100,019	-2.0%
<b>Subtotal</b>	<b>\$291,591</b>	<b>\$297,413</b>	<b>2.0%</b>	<b>\$296,264</b>	<b>0.4%</b>
October	97,645			95,722	
November	95,267			96,296	
December	94,719			100,135	
January	105,033			98,338	
February	100,422			102,168	
March	98,210			104,724	
April	109,845			108,060	
May	99,106			99,933	
June	102,577			103,860	
<b>Total /1</b>	<b>\$1,194,417</b>	<b>\$297,413</b>		<b>\$1,205,500</b>	

NOTES: /1. Details may not add due to rounding.

/2. Based on July 2010 forecast.

# HIGHWAY USER REVENUE FUND

## Fiscal Year-to-Date Revenue Trends By Category

### FY 2010 - 2011

(Dollars in Thousands)

<u>Category</u>	<u>FY 2010 Actual</u>	<u>FY 2011 Actual</u>	<u>Change</u>	<u>FY 2010 Estimate</u>	<u>Change</u>
Gas Tax	\$111,053	\$113,597	2.3%	\$114,743	-1.0%
Use Fuel Tax	40,268	43,477	8.0%	43,753	-0.6%
Motor Carrier	7,108	7,598	6.9%	6,968	9.0%
Veh. Lic. Tax	88,937	85,226	-4.2%	87,304	-2.4%
Registration	31,887	33,934	6.4%	30,496	11.3%
Other	12,339	13,580	10.1%	13,000	4.5%
<b>Total</b>	<b>\$291,591</b>	<b>\$297,413</b>	<b>2.0%</b>	<b>\$296,264</b>	<b>0.4%</b>

NOTES: /1. Details may not add due to individual rounding.

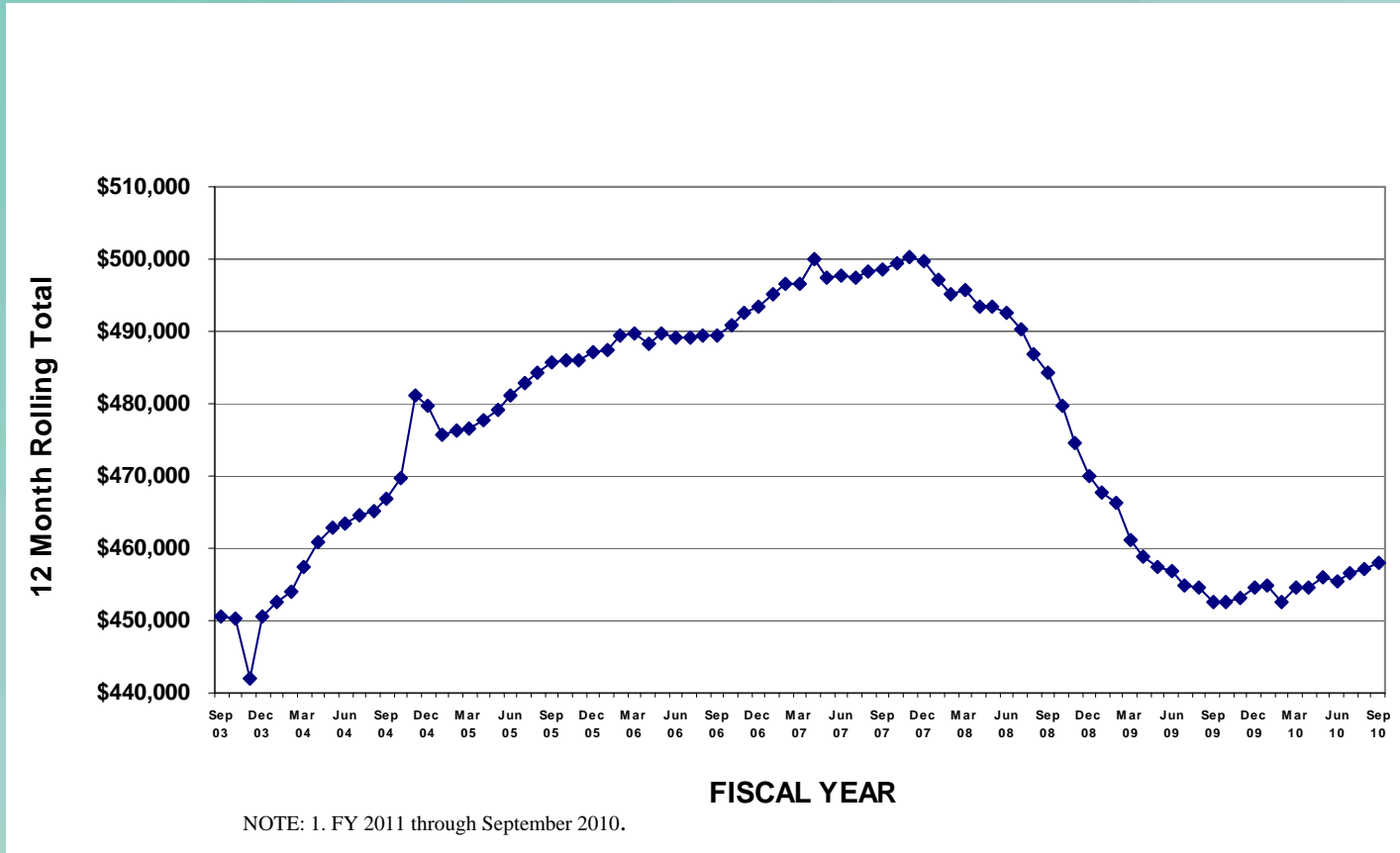
/2. Based on July 2010 forecast.

/3. Includes \$647,987.98 for the DPS Parity Compensation Fund and \$10,904,649.94 for the State General Fund. The transfers impact only the State Highway Fund per Laws 2005, Chapter 306 (SB 1119) and Laws 2010, 7th Special Session, Chapter 1 (HB 2001).

# HIGHWAY USER REVENUE FUND

## 12 Month Rolling Total

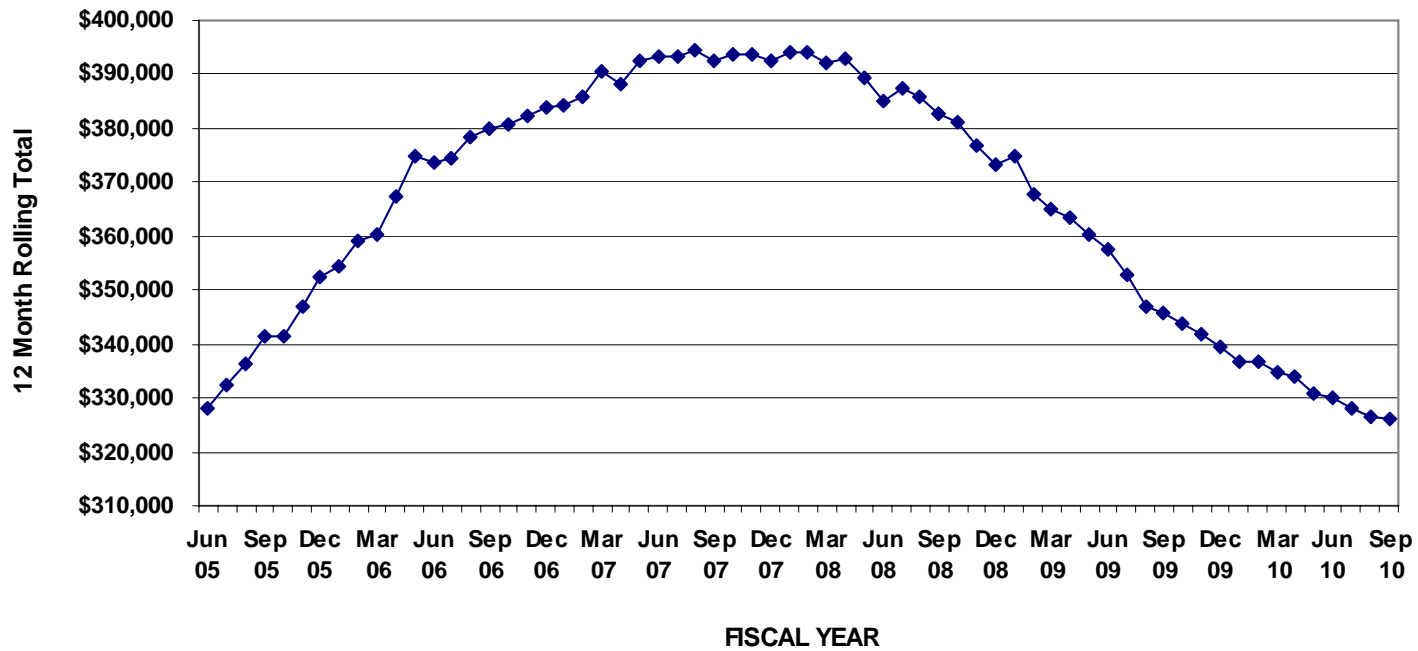
### Gas Tax



# HIGHWAY USER REVENUE FUND

## 12 Month Rolling Total

### Vehicle License Tax

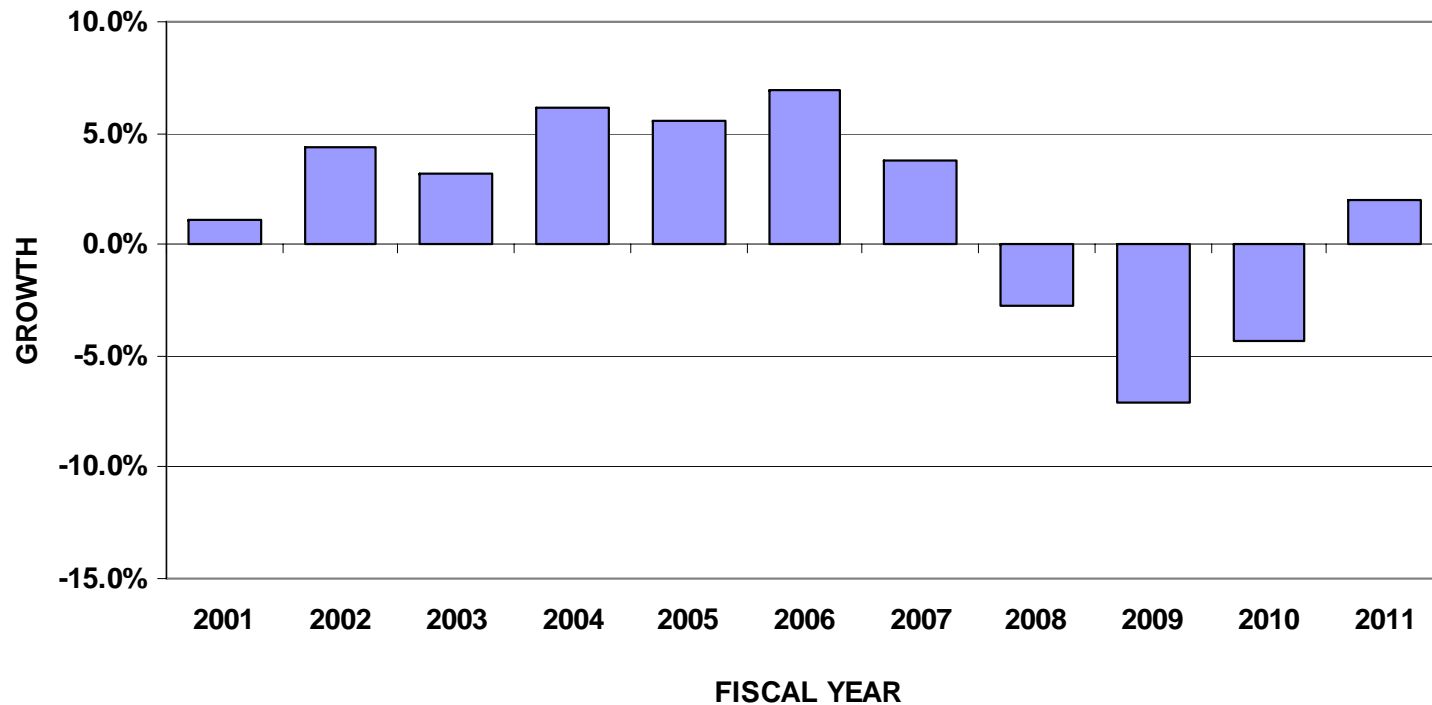


NOTE: 1. FY 2011 through September 2010.

# HIGHWAY USER REVENUE FUND

## Annual Revenue Trends

### FY 2001- 2011



NOTE: 1. FY 2011 through September 2010.

# MARICOPA REGIONAL AREA ROAD FUND

## Monthly Revenue Trend

### FY 2010 - 2011

(Dollars in Thousands)

	<u>FY 2010</u> <u>Actual</u>	<u>FY 2011</u> <u>Actual</u>	<u>Change</u>	<u>FY 2011 /2</u> <u>Estimate</u>	<u>Change</u>
July	\$25,786	\$24,620	-4.5%	\$25,970	-5.2%
August	24,385	23,634	-3.1%	24,112	-2.0%
<b>Subtotal /1</b>	<b>\$50,171</b>	<b>\$48,255</b>	<b>-3.8%</b>	<b>\$50,082</b>	<b>-3.6%</b>
September	24,686			24,790	
October	24,051			25,046	
November	24,245			24,340	
December	24,369			24,362	
January	28,352			29,231	
February	22,887			23,470	
March	23,481			24,009	
April	26,512			26,199	
May	24,676			24,380	
June	25,592			25,091	
<b>Total /1</b>	<b>\$299,024</b>	<b>\$48,255</b>		<b>\$301,000</b>	

NOTES: /1. Details may not add due to individual rounding.

/2. Forecast as of July 2010.

# MARICOPA REGIONAL AREA ROAD FUND

## Fiscal Year-to-Date Revenue Trends by Category

### FY 2010 - 2011

(Dollars in Thousands)

<u>Category</u>	<u>FY 2010 Actual</u>	<u>FY 2011 Actual</u>	<u>Change</u>	<u>FY 2011 /2 Estimate</u>	<u>Change</u>
Retail Sales	\$22,835	\$22,660	-0.8%	\$23,876	-5.1%
Contracting	5,967	4,513	-24.4%	5,008	-9.9%
Utilities	6,412	6,119	-4.6%	6,081	0.6%
Restaurant & Bar	4,498	4,552	1.2%	4,718	-3.5%
Rental of Real Prop.	5,957	5,582	-6.3%	5,563	0.3%
Rental of Pers. Prop.	1,970	1,818	-7.7%	1,935	-6.1%
Other	2,533	3,011	18.8%	2,901	3.8%
<b>Total /1</b>	<b>\$50,171</b>	<b>\$48,255</b>	<b>-3.8%</b>	<b>\$50,082</b>	<b>-3.6%</b>

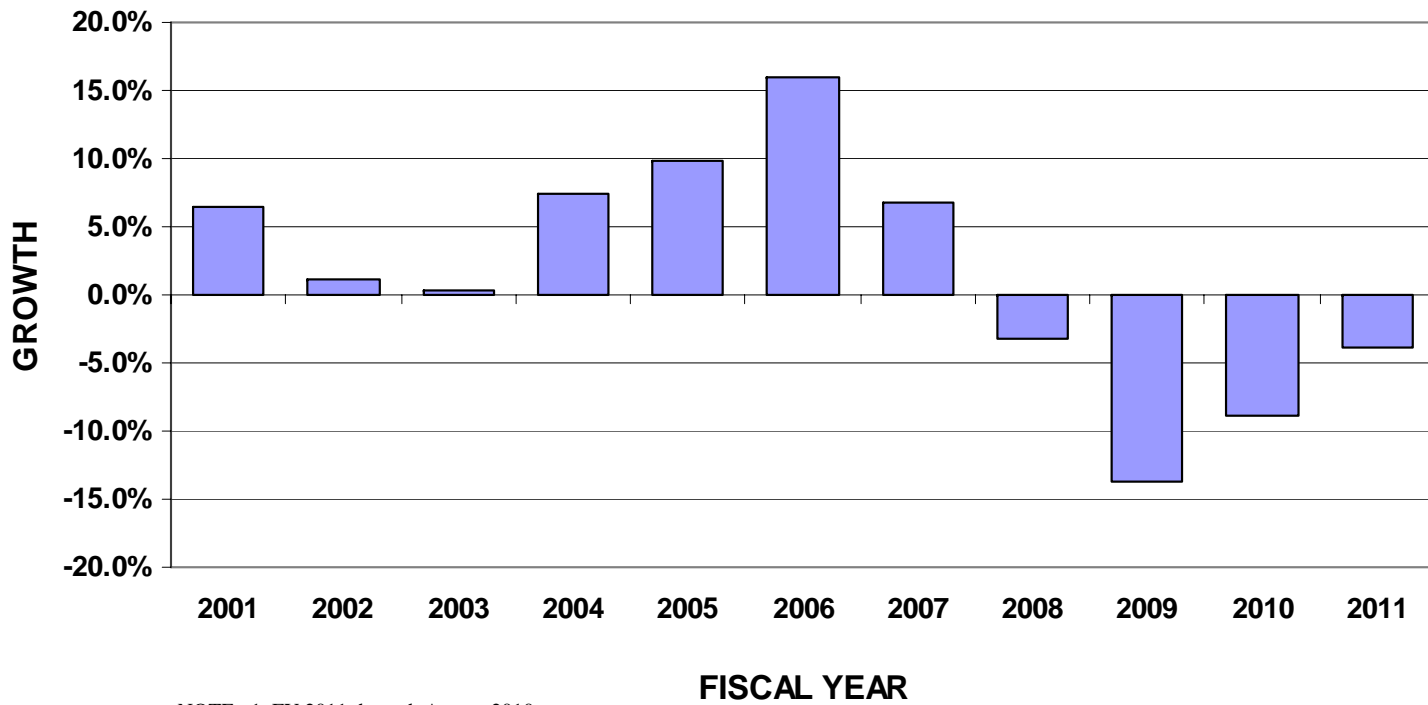
NOTES: /1. Details may not add due to individual rounding.

/2. Forecast as of July 2010.

# MARICOPA REGIONAL AREA ROAD FUND

## Annual Revenue Trends

### FY 2001 - 2011



NOTE: 1. FY 2011 through August 2010.



# AVIATION FUND

## Monthly Revenue Trend

### FY 2010 - 2011

(Dollars in Thousands)

	<u>FY 2010</u> <u>Actual</u>	<u>FY 2011</u> <u>Actual</u>	<u>Change</u>	<u>FY 2011 <sup>1/</sup></u> <u>Estimate</u>	<u>Change</u>
July	\$1,791	\$549	-69.3%	\$1,388	-60.4%
August <sup>3/</sup>	(\$40)	\$2,764	---	\$1,113	148.4%
<b>Subtotal <sup>2/</sup></b>	<b>\$1,751</b>	<b>\$3,314</b>	<b>89.2%</b>	<b>\$2,501</b>	<b>32.5%</b>
September	\$749			\$613	
October	\$2,330			\$817	
November	\$462			\$1,593	
December	\$1,237			\$4,968	
January	\$7,079			\$2,290	
February	\$2,794			\$2,335	
March	\$2,478			\$2,119	
April	\$1,167			\$460	
May	\$4,719			\$3,397	
June	\$342			\$3,941	
<b>Total <sup>2/</sup></b>	<b>\$25,109</b>	<b>\$3,314</b>		<b>\$25,034</b>	

**NOTES:**

1/ Forecast as of July 2010

2/ Details may not add due to rounding.

3. FY 2010 August includes a correction of a \$262,405 overstatement in July.

# AVIATION FUND

## Fiscal Year-to-Date Revenue Trends by Category

### FY 2010 - 2011

(Dollars in Thousands)

<u>Category</u>	<u>FY 2010</u> <u>Actual</u>	<u>FY 2011</u> <u>Actual</u>	<u>Change</u>	<u>FY 2011</u> <sup>/1</sup> <u>Estimate</u>	<u>Change</u>
Flight Property Tax	\$3	\$275	8605.4%	\$1	22791.9%
Aircraft Registration	\$42	\$417	889.6%	\$279	49.6%
Aviation Fuel Tax	\$86	\$69	-19.5%	\$63	10.3%
Grand Canyon Airport	\$151	\$201	33.4%	\$275	-26.7%
Federal Grants	\$1,333	\$2,213	66.0%	\$1,777	24.5%
Investment Interest & Loans	\$134	\$64	-52.5%	\$104	-39.0%
Other	\$2	\$74	2985.2%	\$2	3426.7%
<b>Total</b> <sup>/2</sup>	<b>\$1,751</b>	<b>\$3,314</b>	<b>89.2%</b>	<b>\$2,501</b>	<b>32.5%</b>

**NOTES:**

1/ Forecast as of July 2010

2/ Details may not add due to rounding.

# CASH MANAGEMENT/INVESTMENT PROGRAM

## Investment Performance through August 31, 2010

(Dollars in Thousands)

Investment Pools	Monthly Average Invested Balance	Percent Invested	Monthly		Year-To-Date (YTD)	
			Interest Received	Current Yield	Interest Received	YTD Yield
<b>Pool 2</b>						
Aviation	\$4,604	98.48%	\$4	1.08%	\$10	1.07%
Highway	\$212,123	99.70%	\$196	1.08%	\$361	1.07%
Highway User Fund	\$22,717	99.99%	\$19	1.08%	\$68	1.07%
STAN - MAG 60%	\$30,078	99.97%	\$28	1.08%	\$58	1.07%
STAN - PAG 16%	\$1,387	99.48%	\$1	1.08%	\$2	1.07%
STAN - TOC 24%	\$16,534	99.94%	\$15	1.08%	\$31	1.07%
STAN - TAIR	\$2,056	99.54%	\$2	1.08%	\$4	1.07%
STAN - RORS	\$243	96.04%	\$0	1.08%	\$0	1.07%
STAN - Restoration	\$9,995	99.42%	\$0	1.08%	\$0	1.07%
HURF Bond Redemption	\$29,651	99.96%	\$27	1.08%	\$51	1.07%
FY08B HURF Proceeds	\$76,795	99.52%	\$71	1.08%	\$153	1.07%
FY09A GAN Proceeds	\$39,043	99.82%	\$36	1.08%	\$86	1.07%
Other/1	\$2,520	96.98%	\$2	1.08%	\$3	1.07%
<b>Subtotal</b>	<b>\$447,746</b>	<b>99.70%</b>	<b>\$403</b>	<b>1.08%</b>	<b>\$828</b>	<b>1.07%</b>
<b>Pool 3</b>						
Economic Strength Projects	\$296	99.35%	\$0	0.78%	\$0	0.79%
HELP/2	\$69,690	99.79%	\$47	0.78%	\$93	0.79%
Other/3	\$3,720	97.10%	\$2	0.78%	\$5	0.79%
<b>Subtotal</b>	<b>\$73,706</b>	<b>99.65%</b>	<b>\$49</b>	<b>0.78%</b>	<b>\$98</b>	<b>0.79%</b>
<b>Pool 4</b>						
2009 RARF Proceeds	\$78,940	99.90%	\$46	0.67%	\$112	0.73%
RARF Bond Redemption	\$9,497	99.99%	\$6	0.67%	\$6	0.73%
Regional Area Road Fund	\$330,405	99.88%	\$191	0.67%	\$399	0.73%
<b>Subtotal</b>	<b>\$418,842</b>	<b>99.89%</b>	<b>\$243</b>	<b>0.67%</b>	<b>\$518</b>	<b>0.73%</b>
<b>Total</b>	<b>\$940,294</b>	<b>99.78%</b>	<b>\$695</b>	<b>0.87%</b>	<b>\$1,444</b>	<b>0.90%</b>

Note: Numbers may not add due to rounding

Source: State Treasurer's Office Statement of Account

/1 Includes Equipment and GAN redemption funds.

/2 HELP: Highway Expansion and Extension Loan Program

/3 Includes Safety Enforcement, Storage Tank, Magazine and Special Plates funds.