



HIGHWAY USER REVENUE FUND

Monthly Revenue Trends

FY 2010 - 2011

(Dollars in Thousands)

	FY 2010	FY 2011		FY 2011 /2	
	<u>Actual</u>	<u>Actual</u>	<u>Change</u>	<u>Estimate</u>	<u>Change</u>
July	\$97,763	\$100,345	2.6%	\$98,405	2.0%
August	91,285	99,049	8.5%	97,840	1.2%
September	102,542	98,018	-4.4%	100,019	-2.0%
October	97,645	96,885	-0.8%	95,722	1.2%
November	95,267	96,148	0.9%	96,296	-0.2%
December	94,719	101,786	7.5%	100,135	1.6%
January	105,033	102,690	-2.2%	98,338	4.4%
February	100,422	103,634	3.2%	102,168	1.4%
March	98,210	98,584	0.4%	104,724	-5.9%
April	109,845	110,715	0.8%	108,060	2.5%
May	99,106	95,047	-4.1%	99,933	-4.9%
Subtotal	\$1,091,839	\$1,102,901	1.0%	\$1,101,640	0.1%
June	102,577			103,860	
Total /1	\$1,194,417	\$1,102,901		\$1,205,500	

NOTES: /1. Details may not add due to rounding.

/2. Based on July 2010 forecast.



HIGHWAY USER REVENUE FUND

Fiscal Year-to-Date Revenue Trends By Category

FY 2010 - 2011

(Dollars in Thousands)

Category	FY 2010 Actual	FY 2011 Actual	Change	FY 2011 /2 Estimate	Change
Gas Tax	\$416,378	\$418,216	0.4%	\$422,465	-1.0%
Use Fuel Tax	156,704	162,815	3.9%	163,424	-0.4%
Motor Carrier	33,215	33,721	1.5%	33,427	0.9%
Veh. Lic. Tax	300,500	292,959	-2.5%	295,532	-0.9%
Registration	140,621	144,833	3.0%	141,502	2.4%
Other	44,421	50,358	13.4%	45,290	11.2%
Total /1	\$1,091,839	\$1,102,901	1.0%	\$1,101,640	0.1%

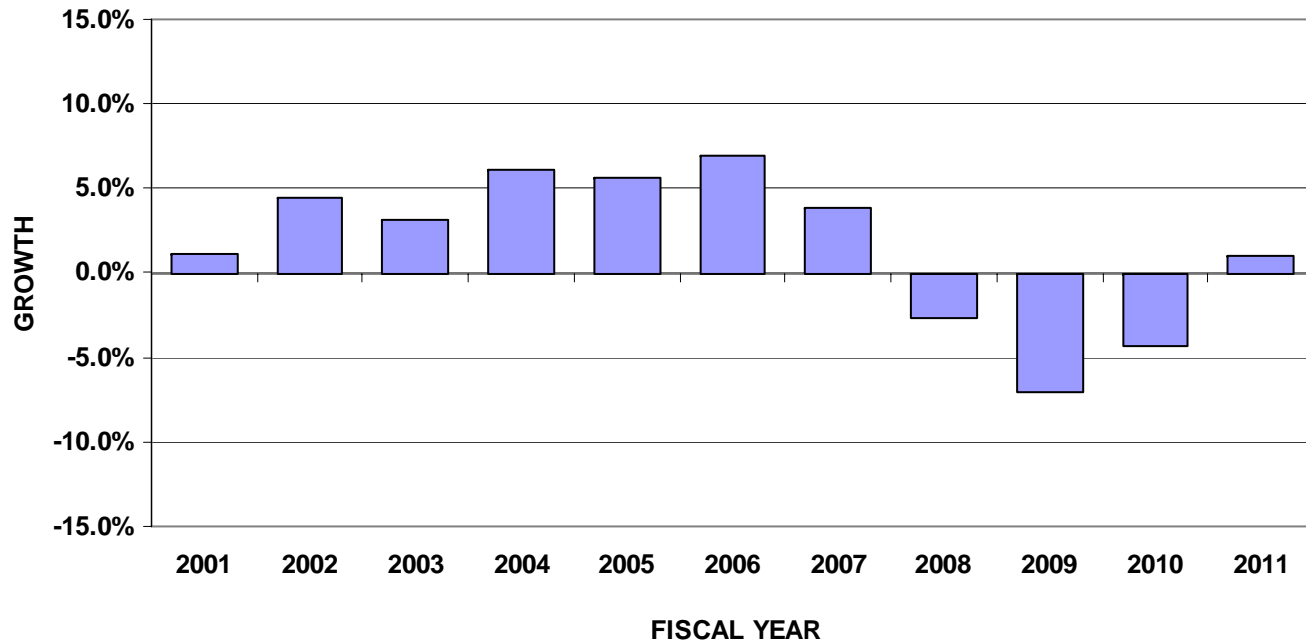
NOTES: /1. Details may not add due to individual rounding.
 /2. Based on July 2010 forecast.



HIGHWAY USER REVENUE FUND

Annual Revenue Trends

FY 2001- 2011



NOTE: 1. FY 2011 through May 2011.



MARICOPA REGIONAL AREA ROAD FUND

Monthly Revenue Trend

FY 2010 - 2011

(Dollars in Thousands)

	FY 2010 <u>Actual</u>	FY 2011 <u>Actual</u>	<u>Change</u>	FY 2011 /2 <u>Estimate</u>	<u>Change</u>
July	\$25,786	\$24,620	-4.5%	\$25,970	-5.2%
August	24,385	23,634	-3.1%	24,112	-2.0%
September	24,686	23,898	-3.2%	24,790	-3.6%
October	24,051	24,784	3.0%	25,046	-1.0%
November	24,245	24,431	0.8%	24,340	0.4%
December	24,369	25,027	2.7%	24,362	2.7%
January	28,352	30,149	6.3%	29,231	3.1%
February	22,887	24,725	8.0%	23,470	5.3%
March	23,481	25,816	9.9%	24,009	7.5%
April	26,512	28,458	7.3%	26,199	8.6%
May	24,676	26,581	7.7%	24,380	9.0%
Subtotal /1	\$273,431	\$282,124	3.2%	\$275,909	2.3%
June	25,592			25,091	
Total /1	\$299,024	\$282,124		\$301,000	

NOTES: /1. Details may not add due to individual rounding.

/2. Forecast as of July 2010.



MARICOPA REGIONAL AREA ROAD FUND

Fiscal Year-to-Date Revenue Trends by Category

FY 2010 - 2011

(Dollars in Thousands)

<u>Category</u>	<u>FY 2010 Actual</u>	<u>FY 2011 Actual</u>	<u>Change</u>	<u>FY 2011 /2 Estimate</u>	<u>Change</u>
Retail Sales	\$130,679	\$139,387	6.7%	\$134,021	4.0%
Contracting	26,655	25,501	-4.3%	25,250	1.0%
Utilities	27,279	27,230	-0.2%	27,437	-0.8%
Restaurant & Bar	27,773	28,884	4.0%	28,725	0.6%
Rental of Real Prop.	32,986	32,766	-0.7%	33,299	-1.6%
Rental of Pers. Prop.	11,034	10,632	-3.6%	11,001	-3.4%
Other	17,026	17,725	4.1%	16,176	9.6%
Total /1	\$273,431	\$282,124	3.2%	\$275,909	2.3%

NOTES: /1. Details may not add due to individual rounding.

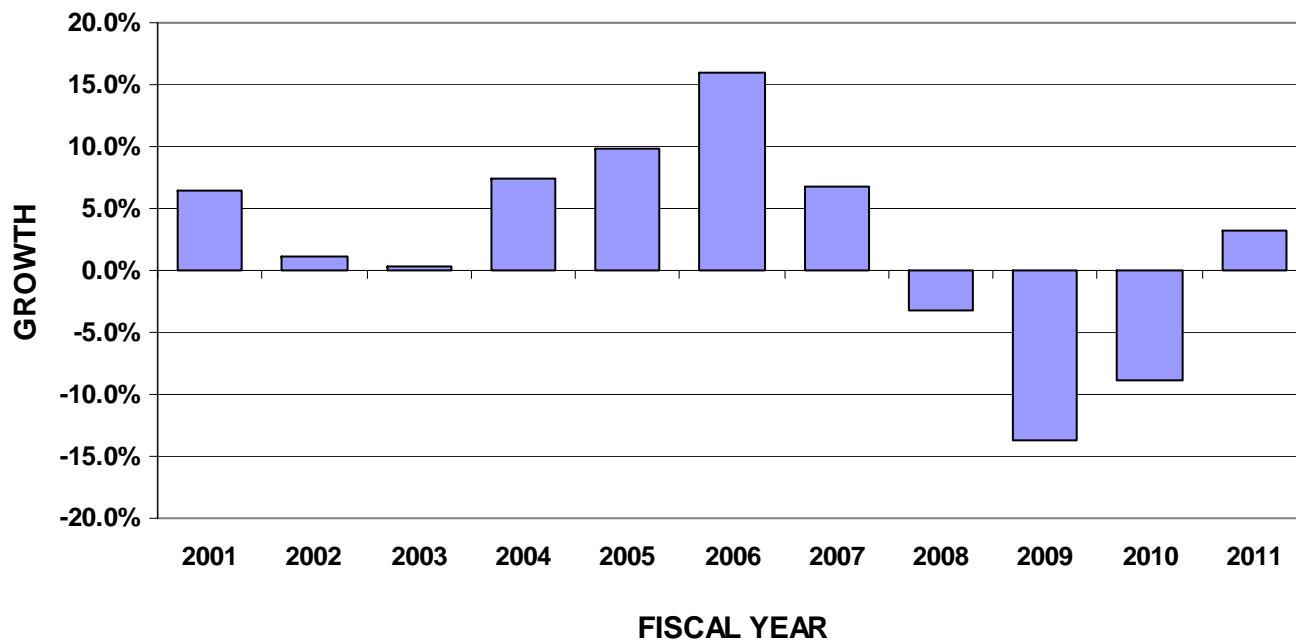
/2. Forecast as of July 2010.



MARICOPA REGIONAL AREA ROAD FUND

Annual Revenue Trends

FY 2001 - 2011



NOTE: 1. FY 2011 through May 2011.



AVIATION FUND

Monthly Revenue Trend

FY 2010 - 2011

(Dollars in Thousands)

	<u>FY 2010 Actual</u>	<u>FY 2011 Actual</u>	<u>Change</u>	<u>FY 2011 ^{1/} Estimate</u>	<u>Change</u>
July	\$1,791	\$549	-69.3%	\$1,388	-60.4%
August ^{3/}	(\$40)	\$2,764	---	\$1,113	148.4%
September	\$749	\$362	-51.8%	\$613	-41.0%
October	\$2,330	\$715	-69.3%	\$817	-12.6%
November	\$462	\$6,573	1321.3%	\$1,593	312.7%
December	\$1,237	\$732	-40.8%	\$4,968	-85.3%
January	\$7,079	\$2,534	-64.2%	\$2,290	10.7%
February	\$2,794	\$3,108	11.3%	\$2,335	33.1%
March	\$2,478	\$1,515	-38.9%	\$2,119	-28.5%
April	\$1,167	\$1,145	-1.9%	\$460	148.8%
May	\$4,719	\$4,227	-10.4%	\$3,397	24.4%
Subtotal ^{2/}	\$24,767	\$24,225	-2.2%	\$21,094	14.8%
June	\$342			\$3,941	
Total ^{2/}	\$25,109	\$24,225		\$25,034	

NOTES:

1/ Forecast as of July 2010

2/ Details may not add due to rounding.

3. FY 2010 August includes a correction of a \$262,405 overstatement in July.



AVIATION FUND

Fiscal Year-to-Date Revenue Trends by Category

FY 2010 - 2011

(Dollars in Thousands)

<u>Category</u>	FY 2010 <u>Actual</u>	FY 2011 <u>Actual</u>	<u>Change</u>	FY 2011 ^{1/} <u>Estimate</u>	<u>Change</u>
Flight Property Tax	\$9,447	\$9,476	0.3%	\$8,744	8.4%
Aircraft Registration	\$7,389	\$7,401	0.2%	\$6,957	6.4%
Aviation Fuel Tax	\$340	\$354	4.1%	\$351	0.8%
Grand Canyon Airport	\$772	\$810	5.0%	\$926	-12.5%
Federal Grants	\$5,967	\$5,695	-4.6%	\$3,497	62.8%
Investment Interest & Loans	\$850	\$556	-34.6%	\$608	-8.6%
Other	\$2	(\$67)	-3450.0%	\$10	-803.5%
Total ^{2/}	\$24,767	\$24,225	-2.2%	\$21,094	14.8%

NOTES:

1/ Forecast as of July 2010

2/ Details may not add due to rounding.



**HIGHWAY EXPANSION AND EXTENSION LOAN PROGRAM
(HELP)**



**HELP Fund Cash Status as of May 2011
(Inception to Date)**

Revenues:

Federal Capitalization	\$46,185,974
State Match	2,791,729
Board Funding Obligation, Series 1999	100,000,000
Board Funding Obligation, Series 2000	100,000,000
Board Funding Obligation, Series 2002	40,000,000
Board Funding Obligation, Series 2003	140,000,000
Board Funding Obligation, Series 2007	50,000,000
Highway Fund Transfer	20,000,000
General Fund Appropriation	20,000,000
Interest Received on Loans	26,884,721
Interest Income	42,003,689
Principal Repaid on Loans	540,624,039
Total Revenues	<u>\$1,128,490,152</u>

Expenditures:

Loan Draws	\$545,578,522
BFO Payment to Treasurer - Principal	430,000,000
BFO Payment to Treasurer - Interest	39,667,756
Highway Fund Repayment	20,000,000
General Fund Reversion	20,000,000
Administration	2,192,718
Total Expenditures	<u>\$1,057,438,996</u>

Cash Balance as of 05/31/11 **\$71,051,156**