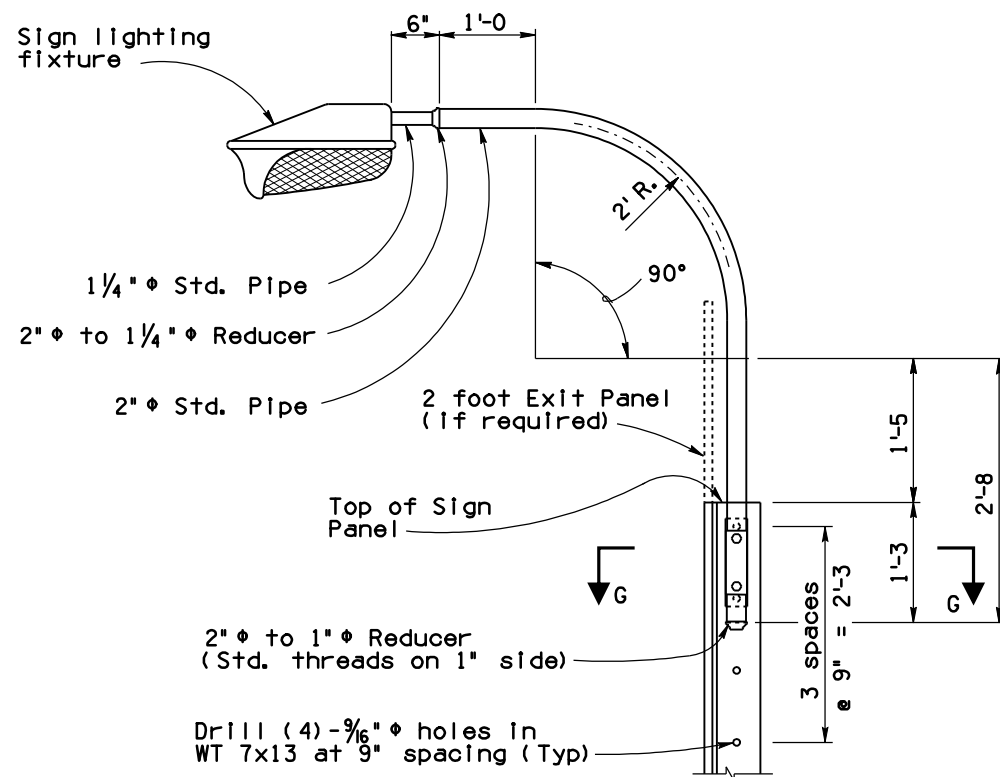


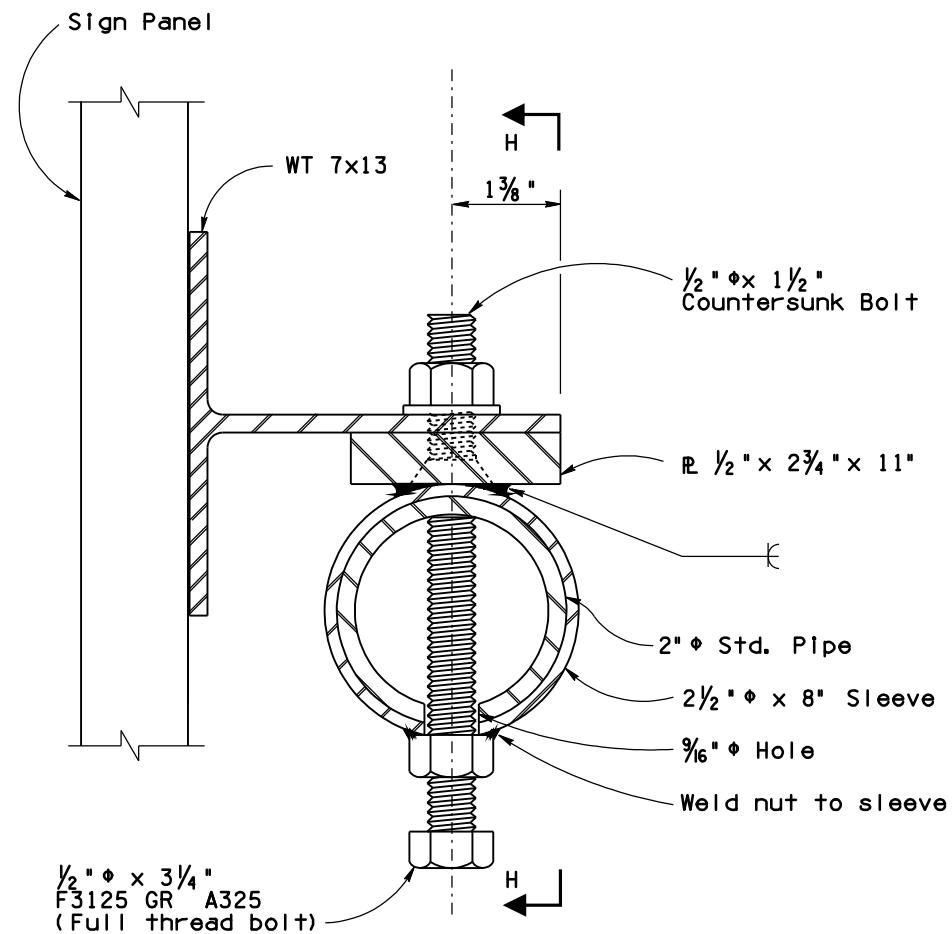
Note to Designer:
The information presented in this Standard Drawing has been prepared in accordance with recognized engineering principles and is for general use. It should not be used for specific application without competent professional examination and verification of its suitability and applicability by a licensed professional engineer. Contents within the inner border line shall not be altered.

05/00

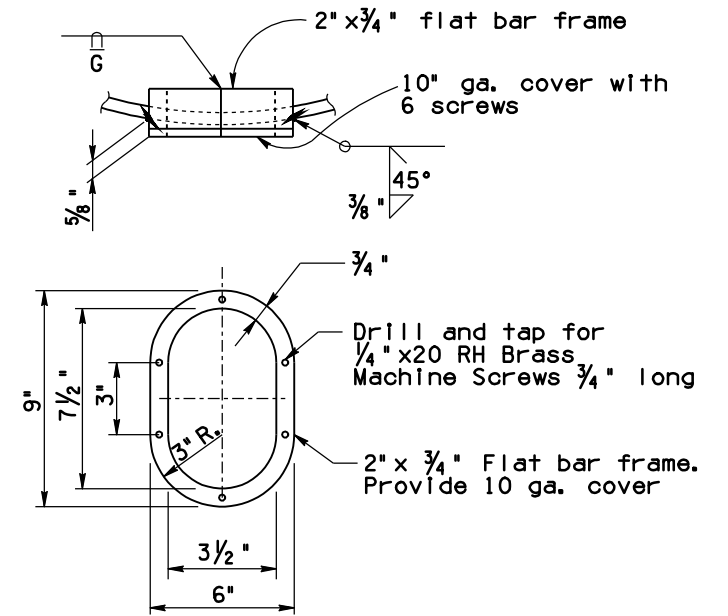
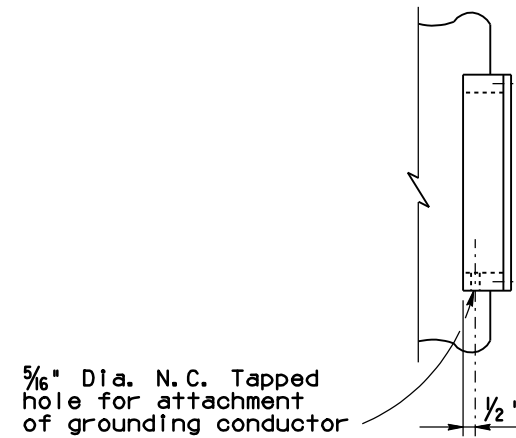
PRIOR DISTRIBUTION DATE



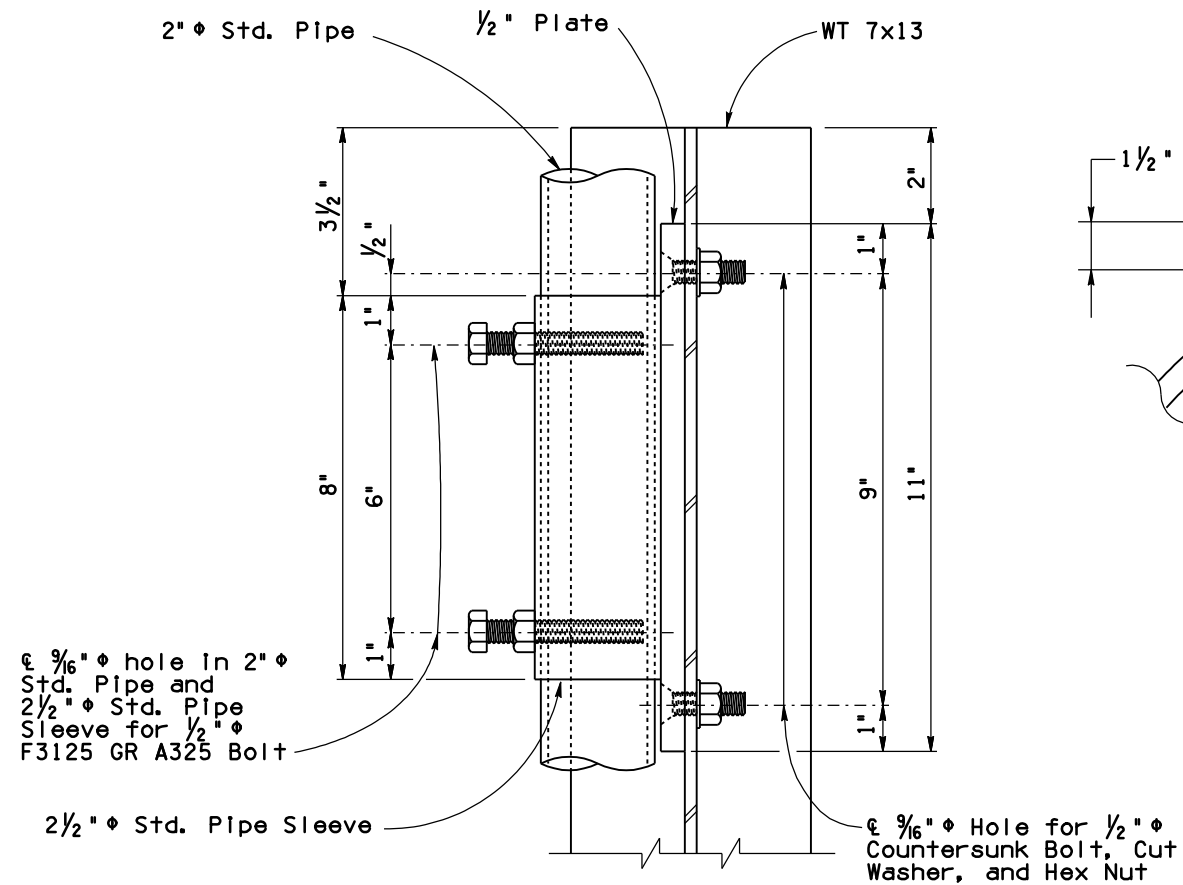
OVERHEAD LIGHT SUPPORT DETAIL



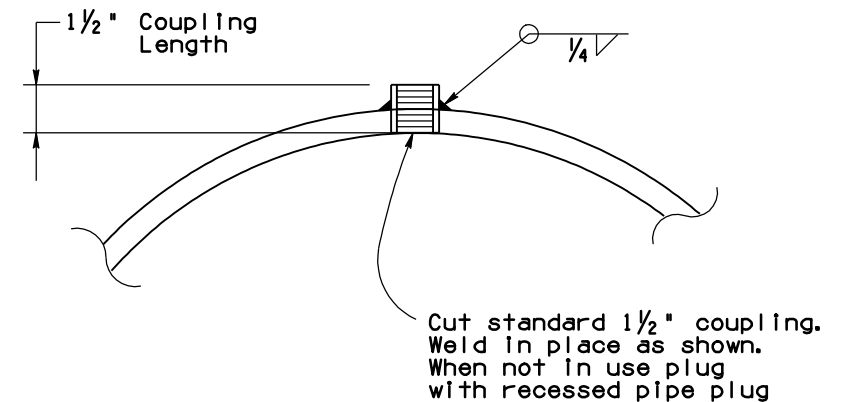
SECTION G-G



HAND HOLE & COVER DETAILS



ELEVATION H-H



COUPLING DETAIL

STANDARDS ENGINEER A. ALZUBI RECOMMENDED FOR APPROVAL GROUP MANAGER D. EBERHART APPROVED STANDARDS COMMITTEE APPROVED FOR DISTRIBUTION		ARIZONA DEPARTMENT OF TRANSPORTATION INFRASTRUCTURE DELIVERY AND OPERATIONS DIVISION BRIDGE GROUP STANDARD DRAWING	
04/19 DATE		MEDIAN SIGN STRUCTURE (ONE SIDED) LIGHT SUPPORT DETAILS	DRAWING NO. SD 9.02 (5 of 5)