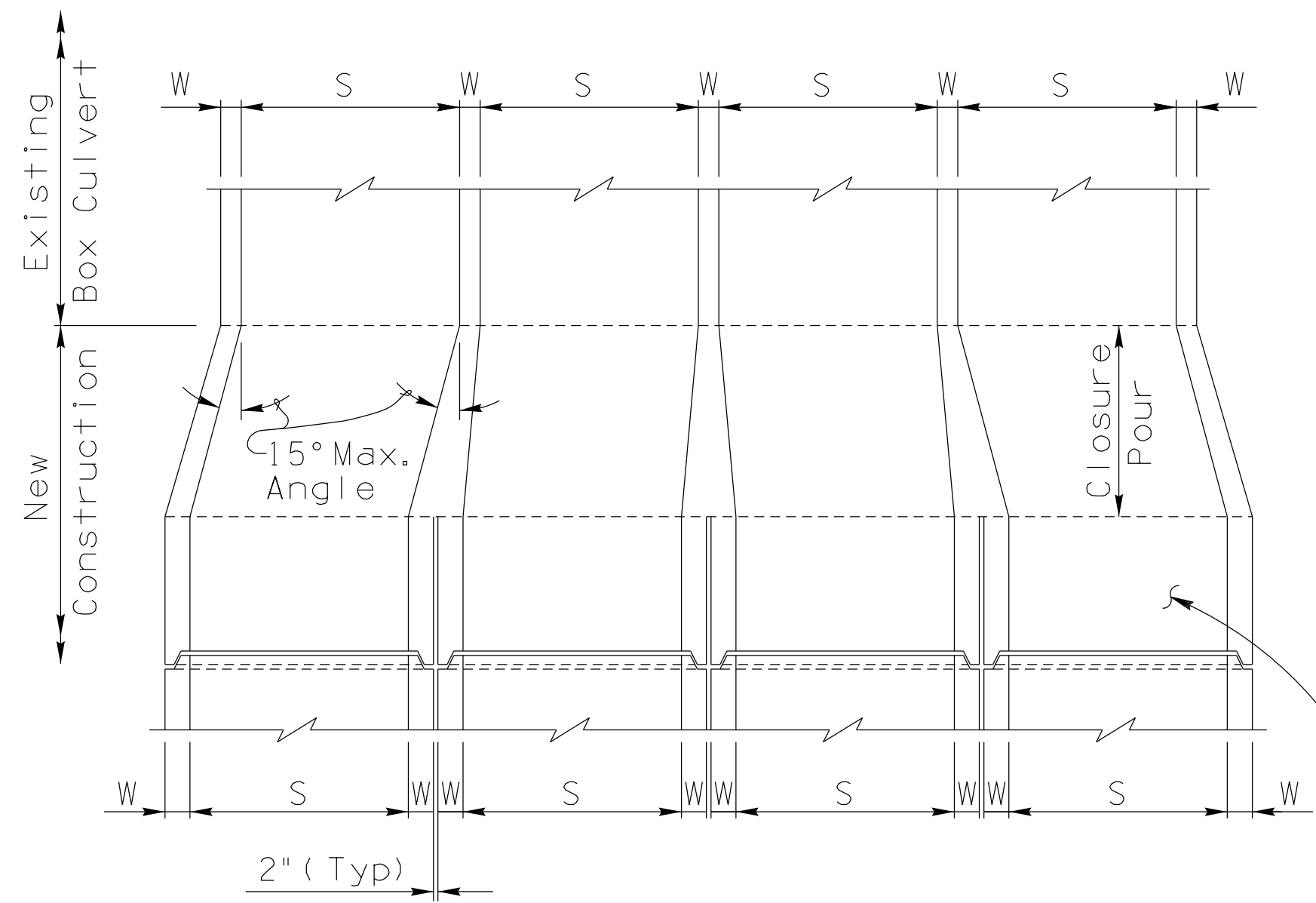
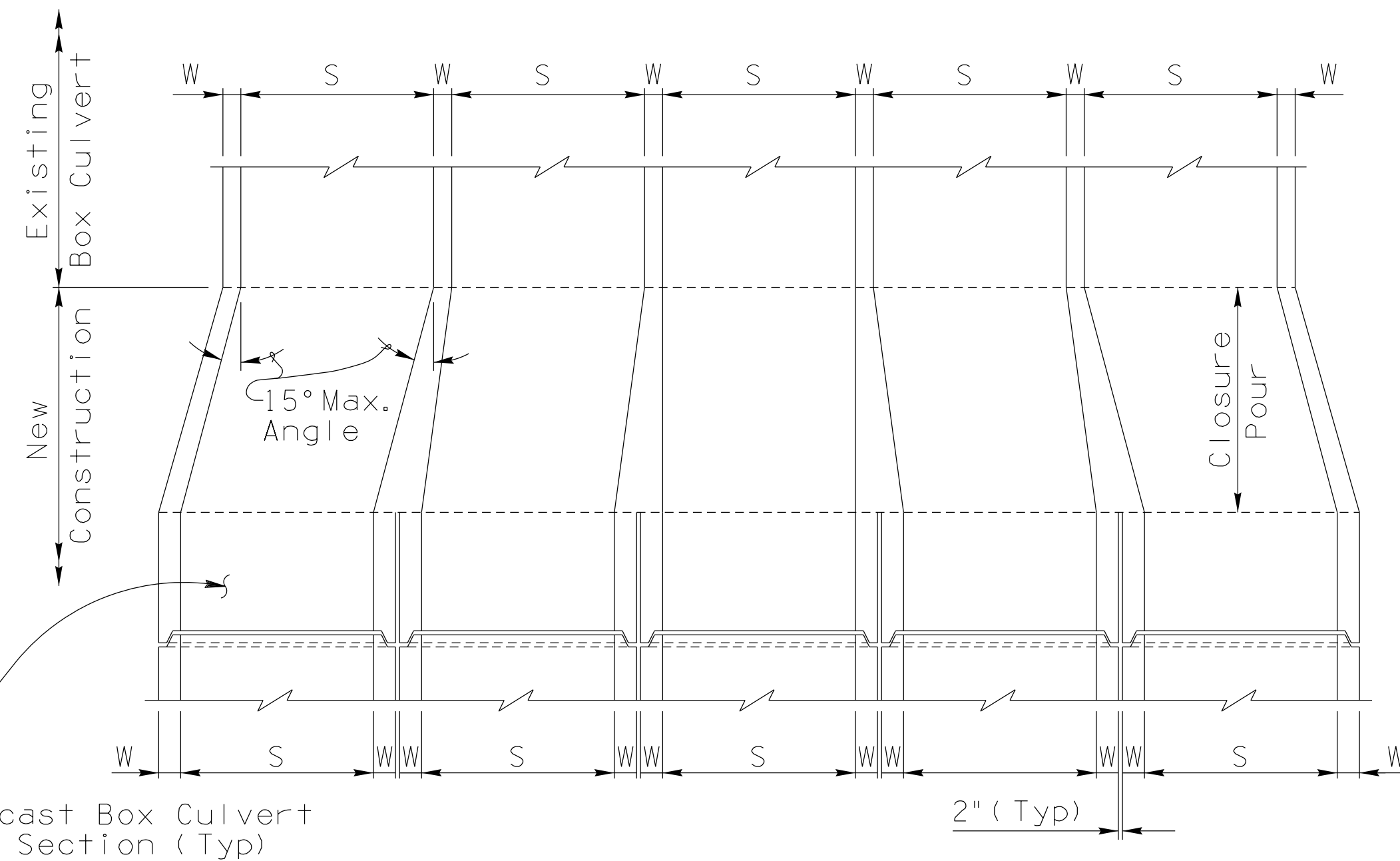


Note to Designer:  
 The information presented in this Standard Drawing has been prepared in accordance with recognized engineering principles and is for general use. It should not be used for specific application without competent professional examination and verification of its suitability and applicability by a licensed professional engineer. Contents within the inner border line shall not be altered.

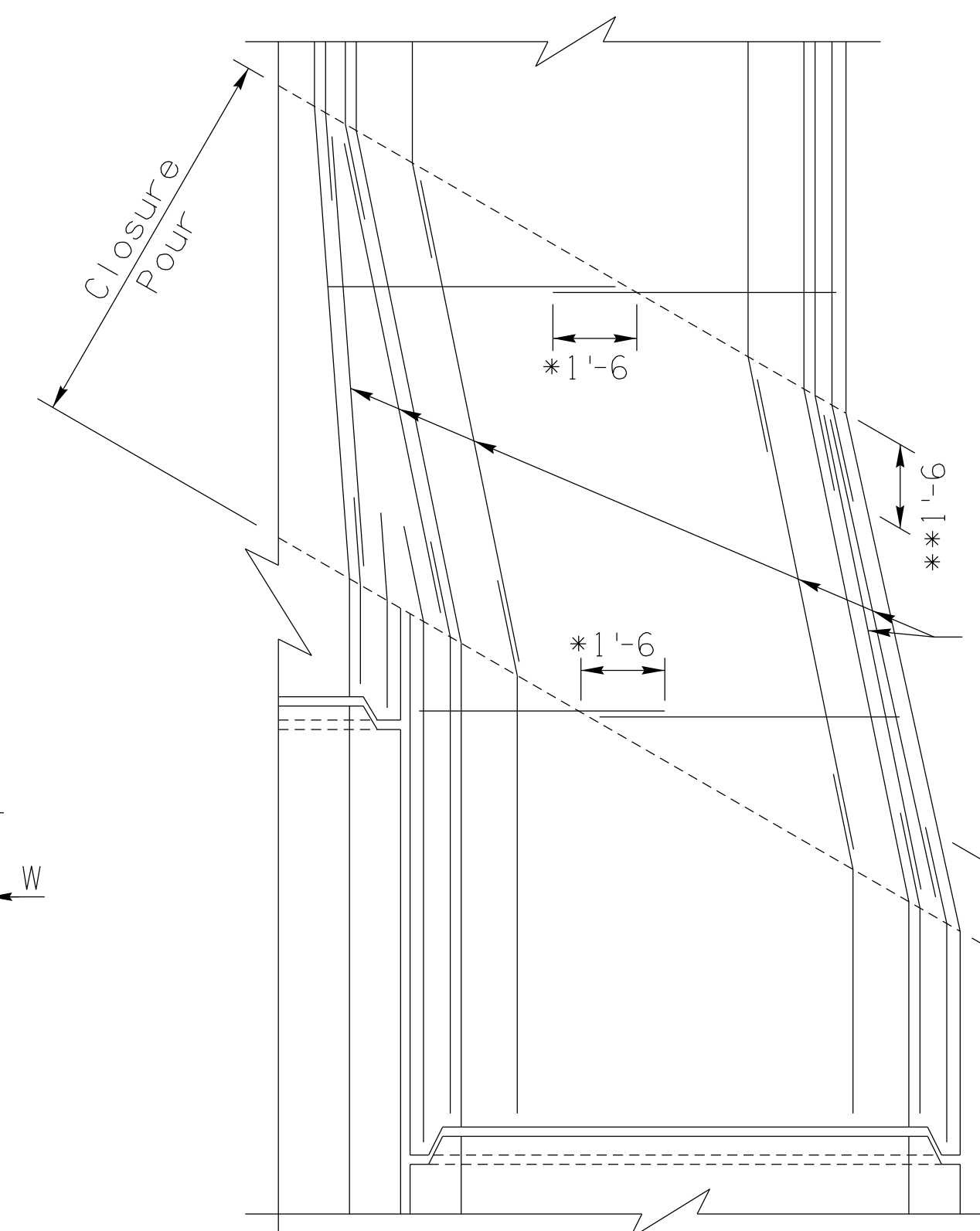


SECTION THRU CULVERT WALLS  
(Even number of cells)



SECTION THRU CULVERT WALLS  
(Odd number of cells)

Precast Box Culvert End Section (Typ)



For skewed ends  $< 20^\circ$ ,  
Place transv. slab bars  
along skew.

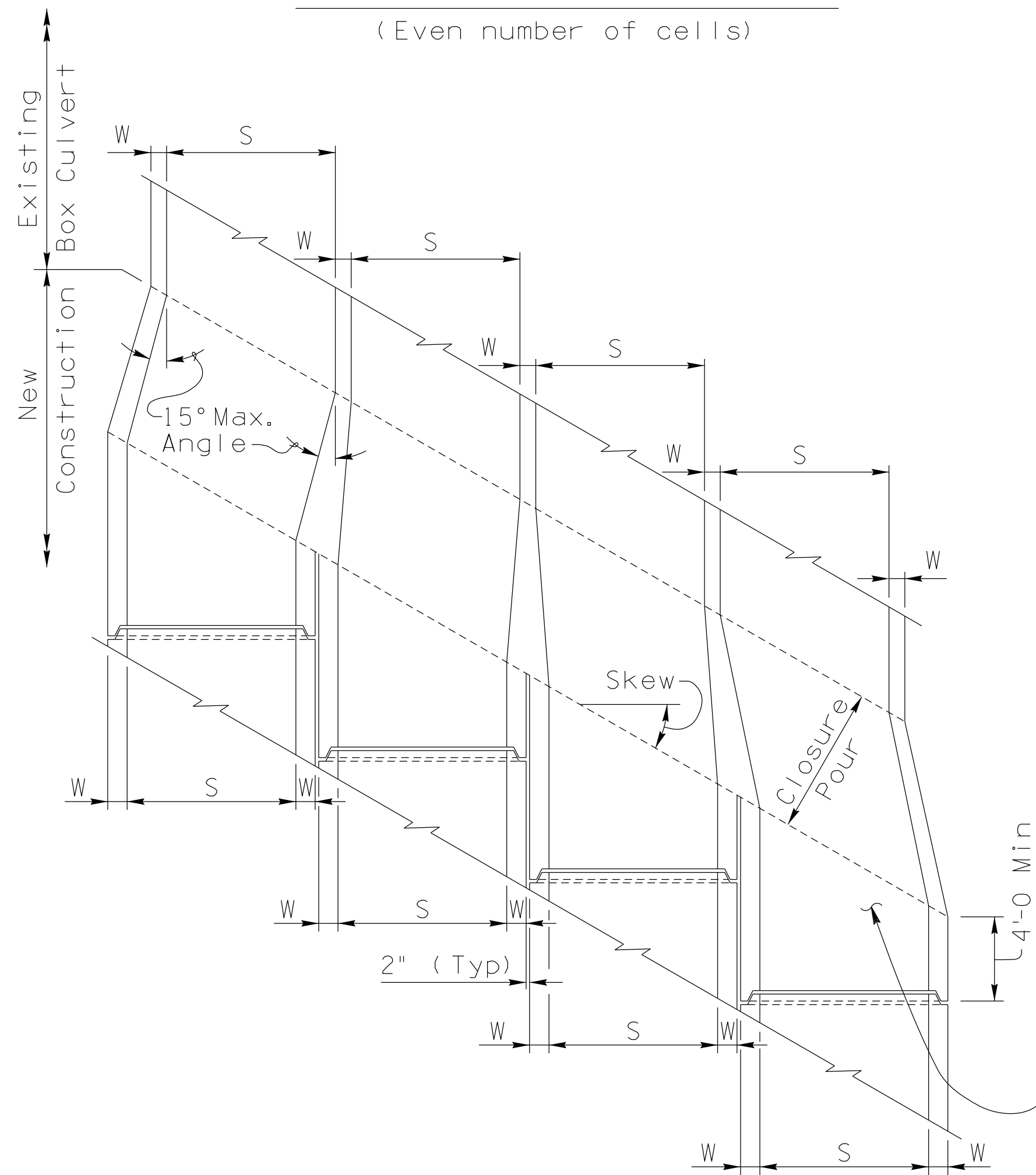
\*For skewed ends  $\ge 20^\circ$ ,  
Extend box transv.  
reinf. 1'-6" and lap  
transv. slab bars.

\*\*Extend box long.reinf.  
1'-6", bend to wall angle.

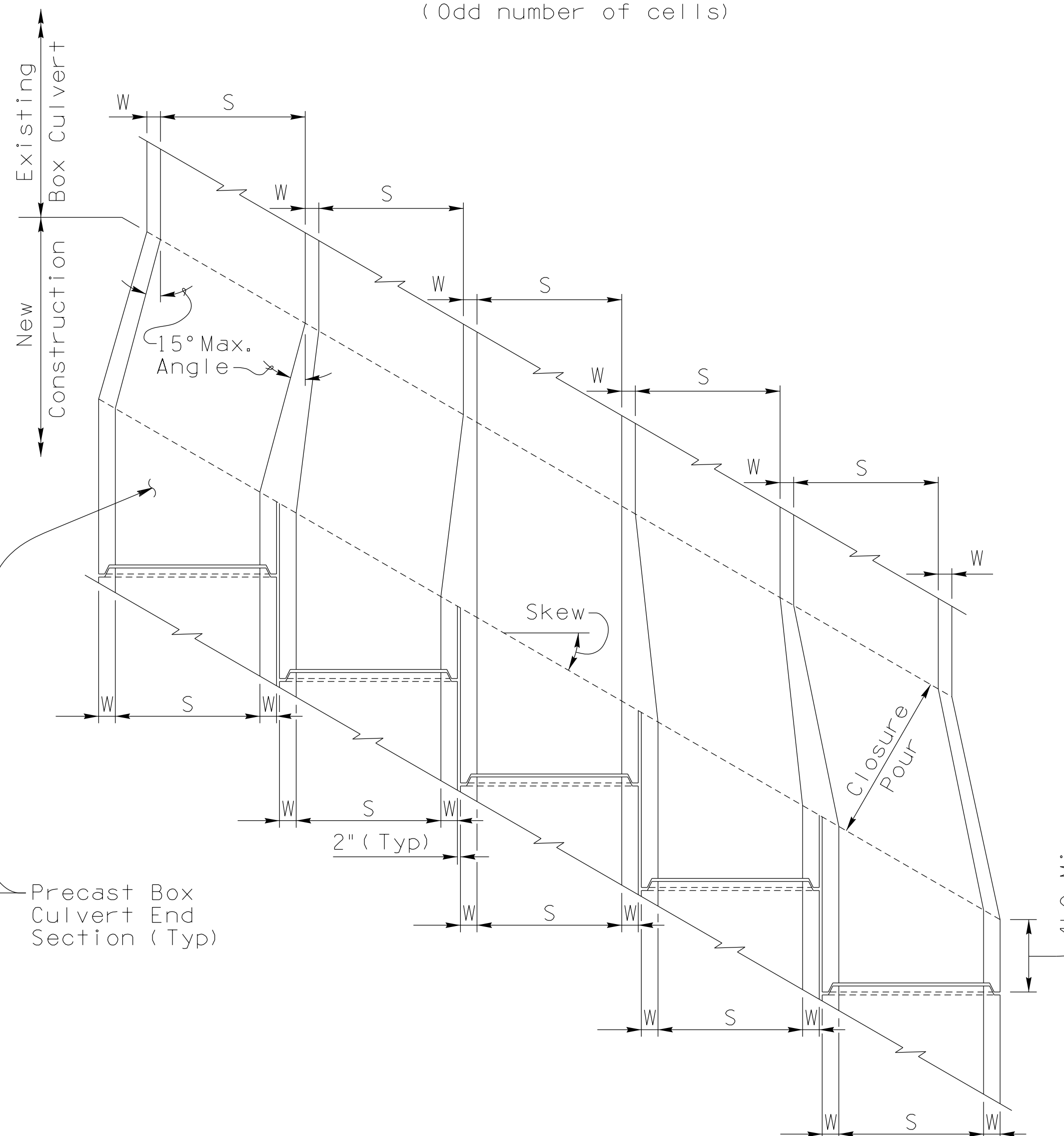
Lap long.reinf.in  
walls and slabs  
to extended bars.

NOTE:  
Only partial  
reinf. shown for  
clarity.

For reqd. reinf.  
in closure pour  
area, See SD6.01  
to SD6.06.



SECTION THRU CULVERT WALLS  
(Even number of cells)



SECTION THRU CULVERT WALLS  
(Odd number of cells)

Precast Box Culvert End Section (Typ)

SPAN LENGTH	CLOSURE POUR LENGTH				
	NO. OF BARRELS				
6	2'-0	3'-9	5'-8	7'-6	9'-4
8	2'-4	4'-8	7'-0	9'-4	11'-8
10	2'-8	5'-4	8'-0	10'-7	13'-3
12	3'-0	5'-11	8'-11	11'-10	14'-10

CLOSURE POUR NOTES:

Closure pour length determined by 15° max. wall angle for exterior box offset (Min. 2'-0).

For skewed culvert ends, length of closure pour measured along  $\perp$  culvert is determined by dividing length in table by cosine of skew angle.

Culvert walls length and width varies within closure pour area to match adjoining walls. Top and bottom slab thickness may vary to match adjoining slabs.

NOTE:

For General Notes, Dimensions, Quantities and additional Details, see SD 6.40 (1 of 4).

STANDARDS ENGINEER  
A. ALZUBI  
RECOMMENDED FOR APPROVAL  
GROUP MANAGER  
D. BENTON  
APPROVED  
STANDARDS COMMITTEE APPROVED FOR DISTRIBUTION 02/23 DATE

ARIZONA DEPARTMENT OF TRANSPORTATION  
INFRASTRUCTURE DELIVERY AND OPERATIONS DIVISION  
**BRIDGE GROUP STANDARD DRAWING**

PRECAST REINFORCED CONCRETE  
BOX CULVERTS  
MISCELLANEOUS DETAILS 3

DRAWING NO.  
SD 6.20  
(5 of 5)

PRIOR DISTRIBUTION DATE