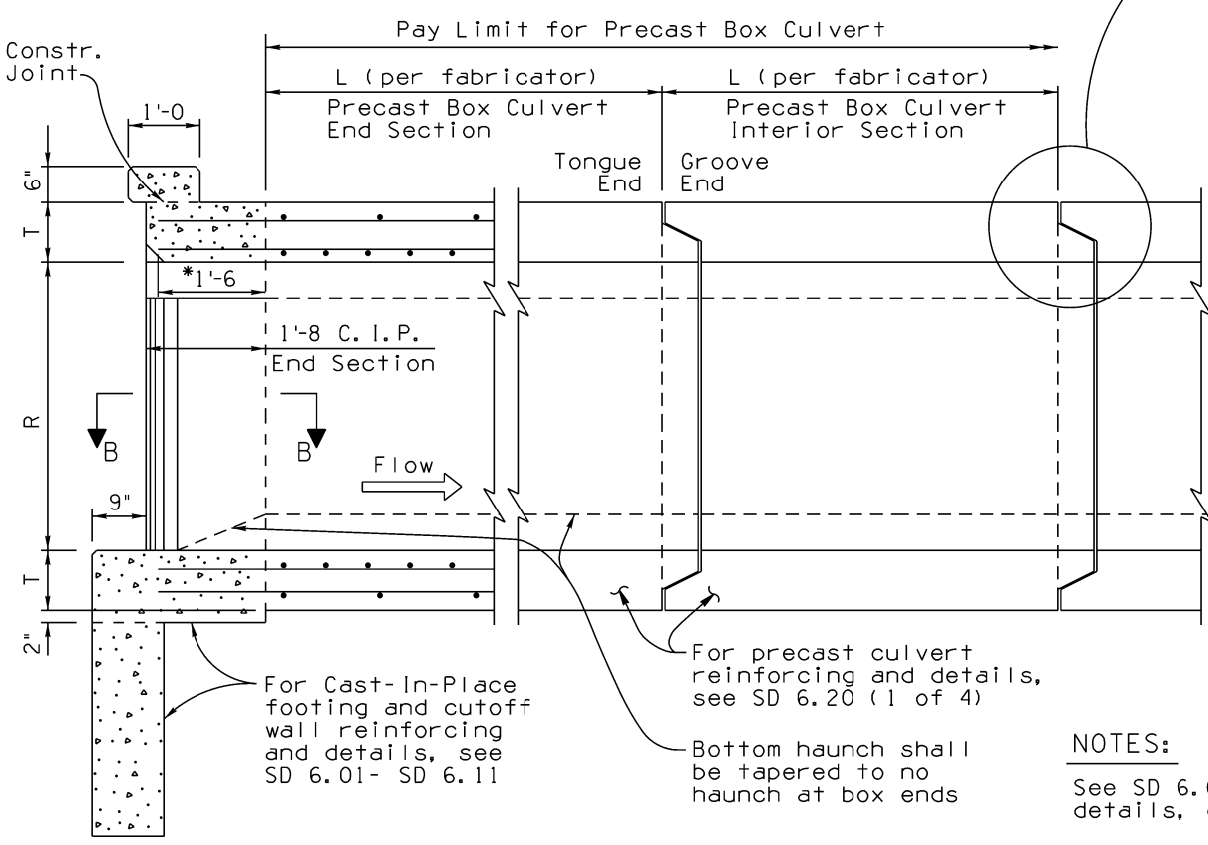
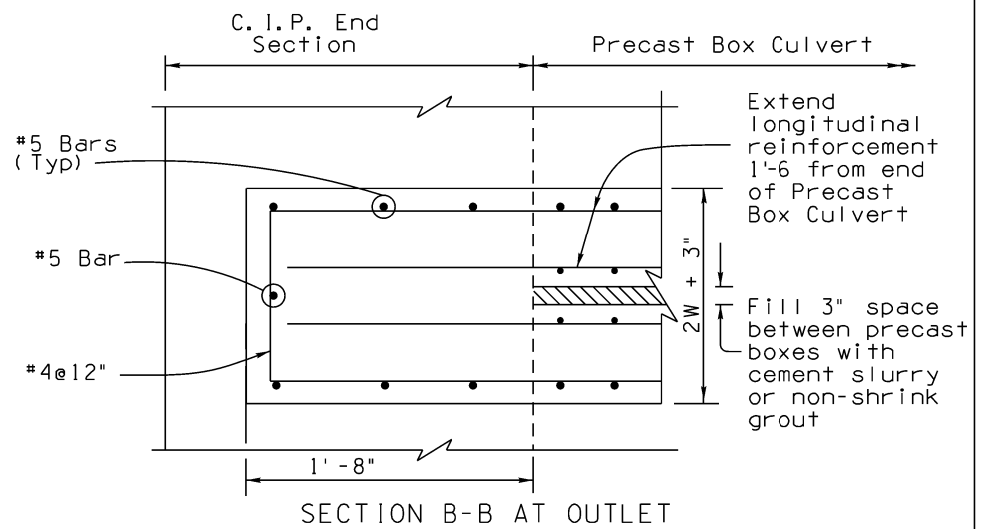
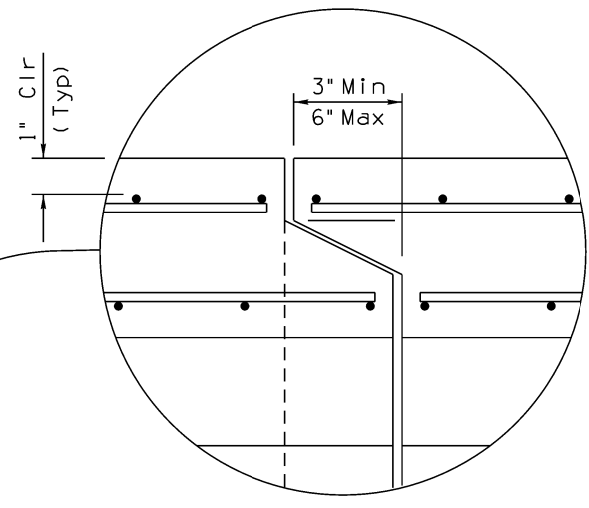
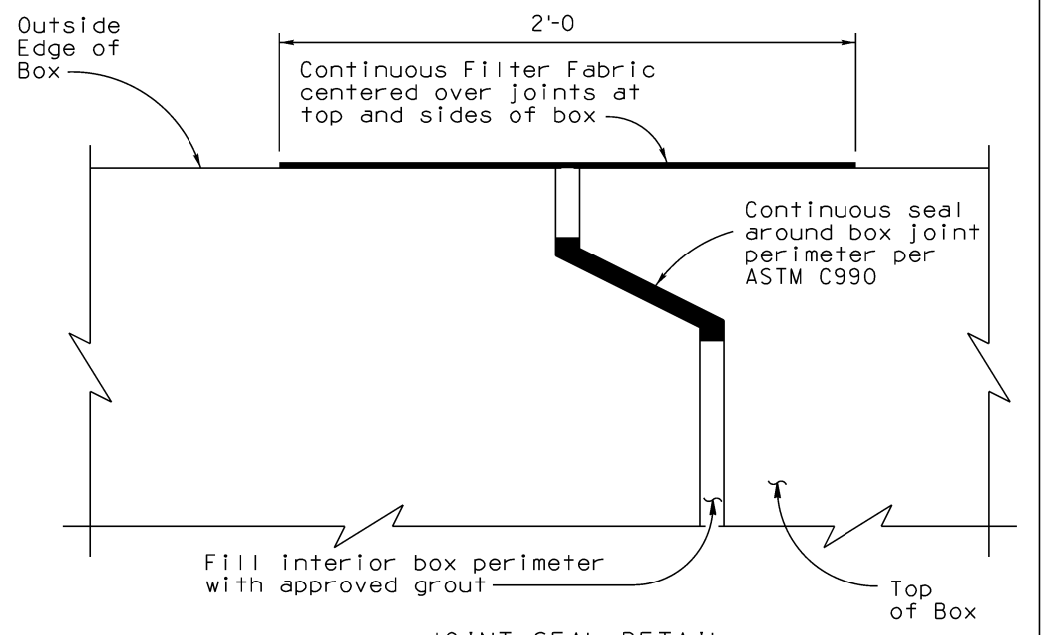
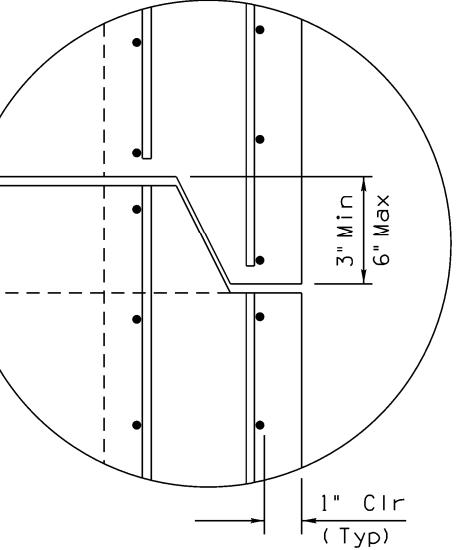
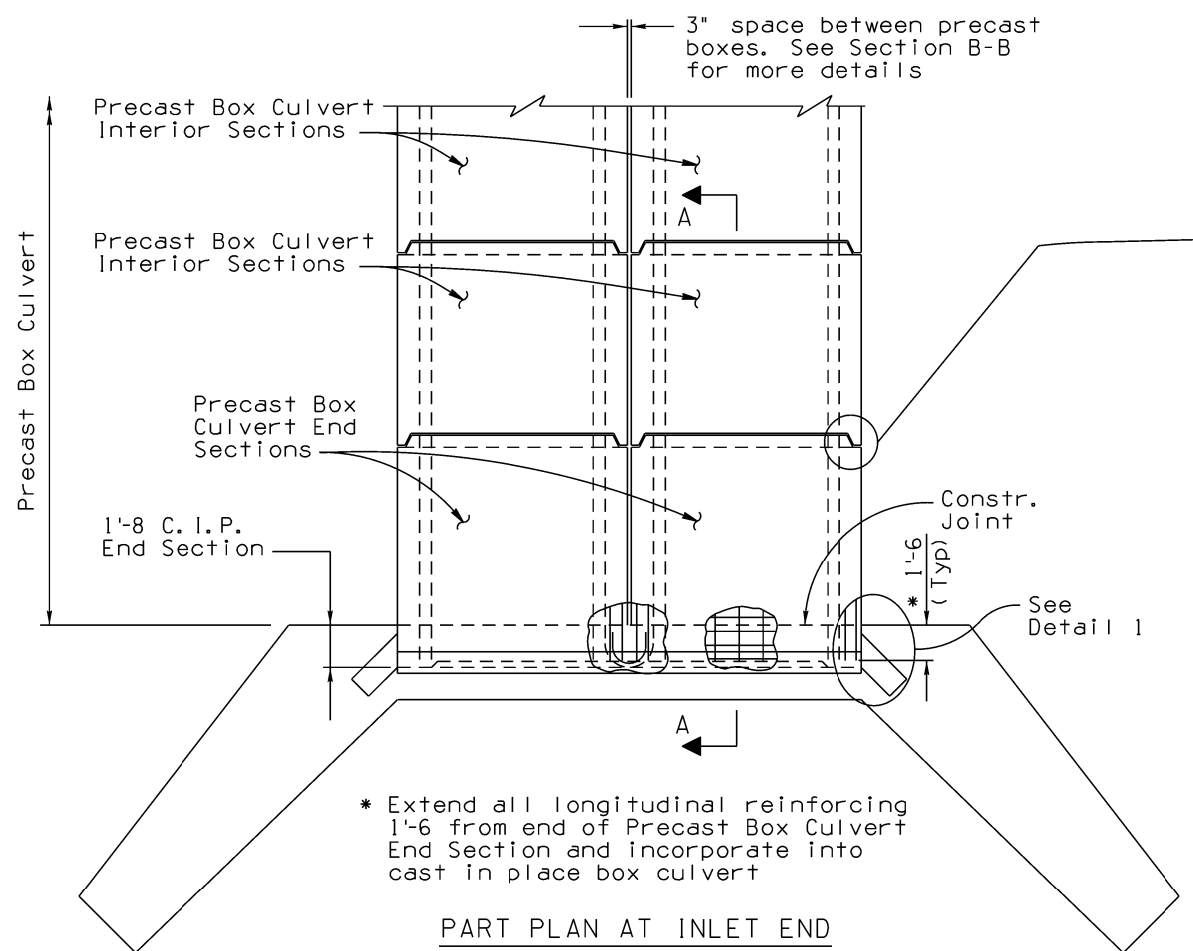


Note to Designer: The information presented in this Standard Drawing has been prepared in accordance with recognized engineering principles and is for general use. It should not be used for specific application without competent professional examination and verification of its suitability and applicability by a licensed professional engineer. Contents within the inner border line shall not be altered.

PRIOR DISTRIBUTION DATE 02/23

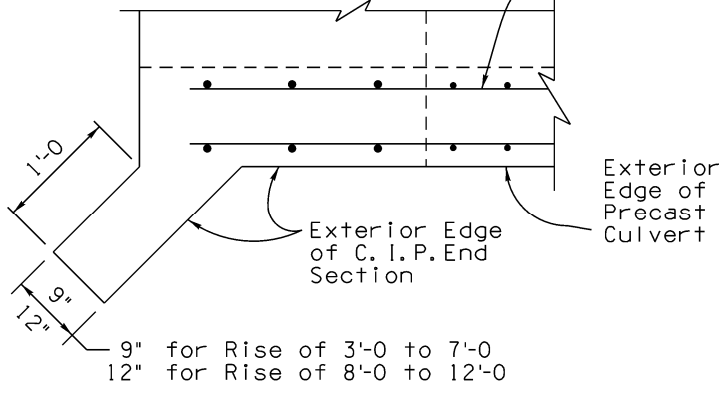
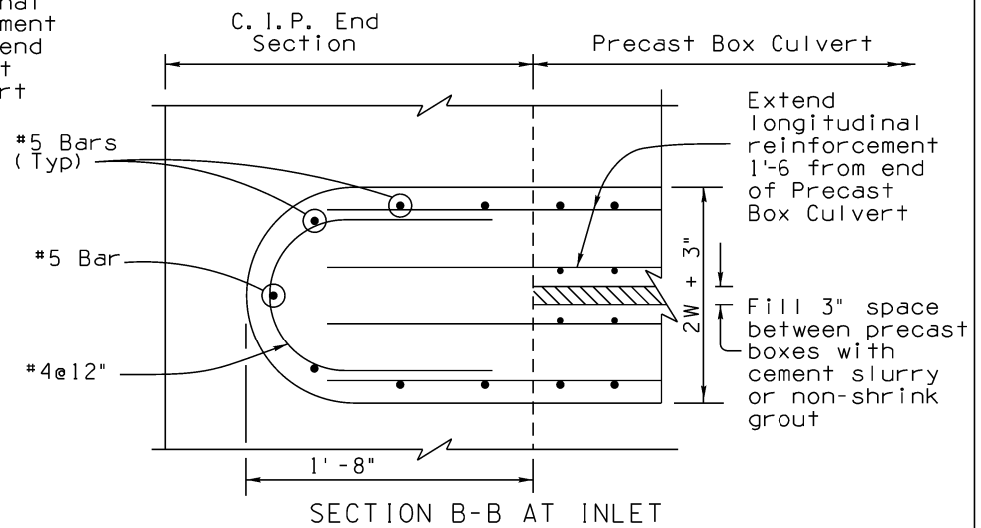


**NOTES:**

See SD 6.01-SD 6.11 for additional notes, details, dimensions, and quantities.

Footing for C.I.P. end section shall be continuous with no joints.

Extend longitudinal reinforcement 1'-6 from end of Precast Box Culvert



STANDARDS ENGINEER	B. SINGH
RECOMMENDED FOR APPROVAL	
GROUP MANAGER	D. BENTON
APPROVED	
STANDARDS COMMITTEE APPROVED FOR DISTRIBUTION	10/24 DATE

ARIZONA DEPARTMENT OF TRANSPORTATION INFRASTRUCTURE DELIVERY AND OPERATIONS DIVISION <b>BRIDGE GROUP STANDARD DRAWING</b>	
PRECAST REINFORCED CONCRETE BOX CULVERTS MISCELLANEOUS DETAILS 1	DRAWING NO. SD 6.20 (2 of 5)