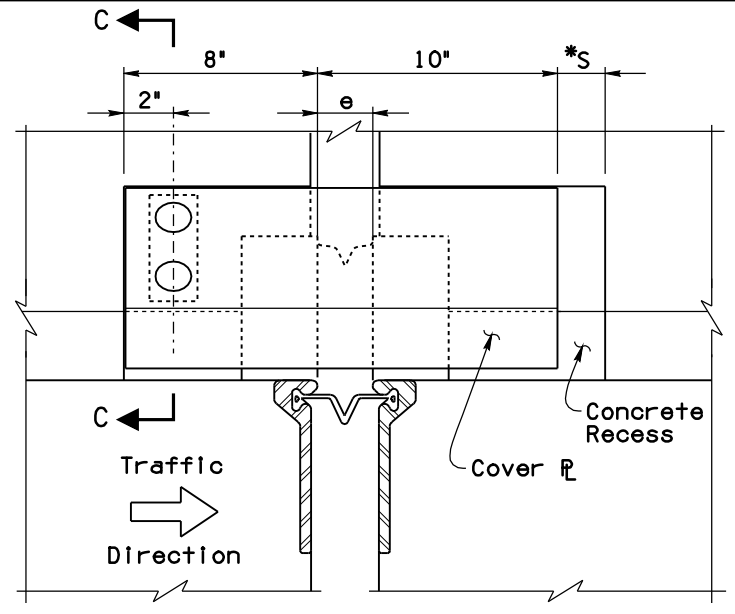
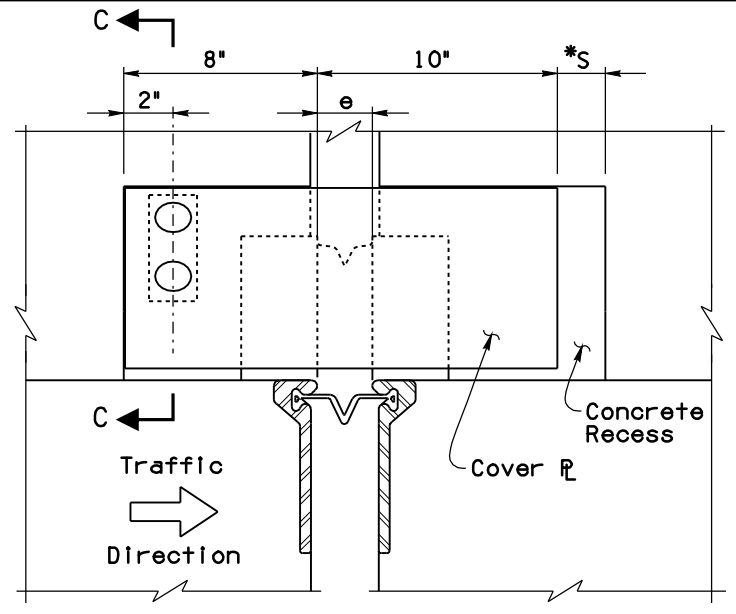


Note to Designer: This Standard Drawing has been prepared in accordance with recognized engineering principles and is for general use. It should not be used for specific application without competent professional examination and verification of its suitability and applicability by a licensed professional engineer. Contents within the inner border line shall not be altered.

12/09
 PRIOR DISTRIBUTION DATE

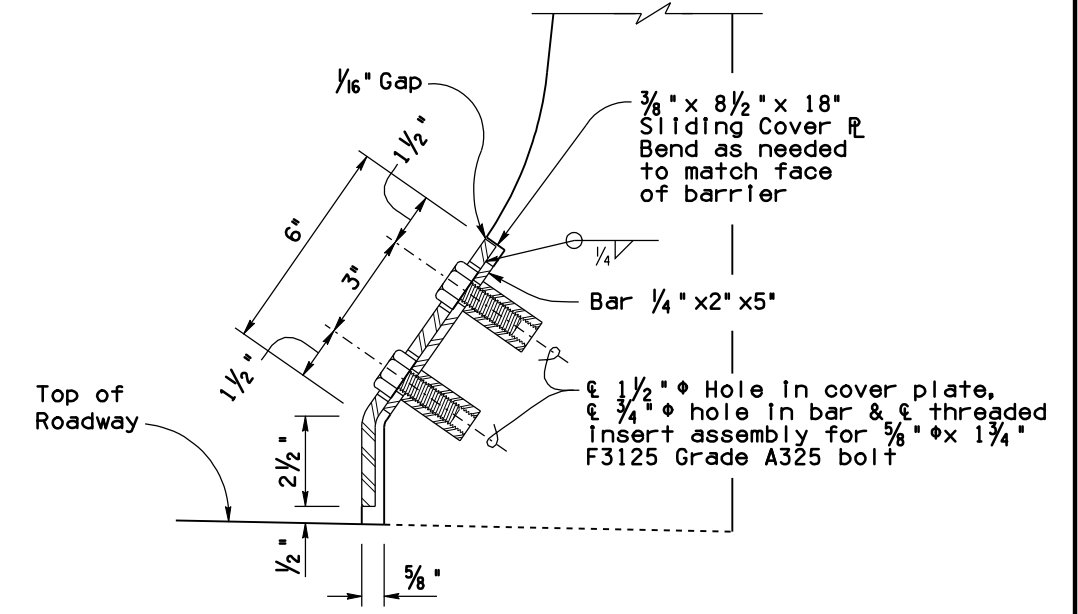


SECTION B-B
F-SHAPE BARRIER

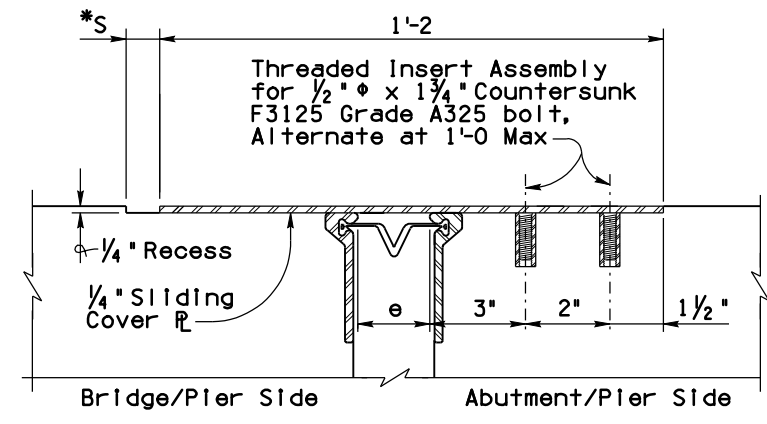


SECTION B-B
SINGLE SLOPE BARRIER

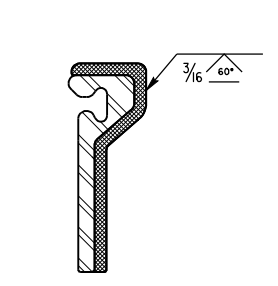
* S = M.R. / 2 + 1/2"



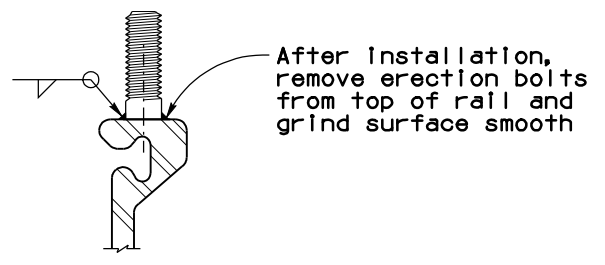
SECTION C-C
F-SHAPE BARRIER



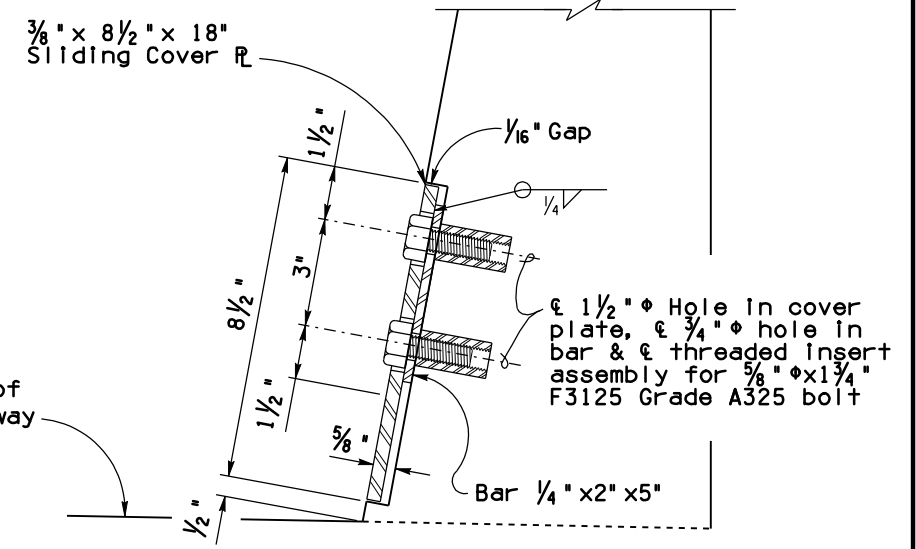
SIDEWALK COVER PLATE DETAIL



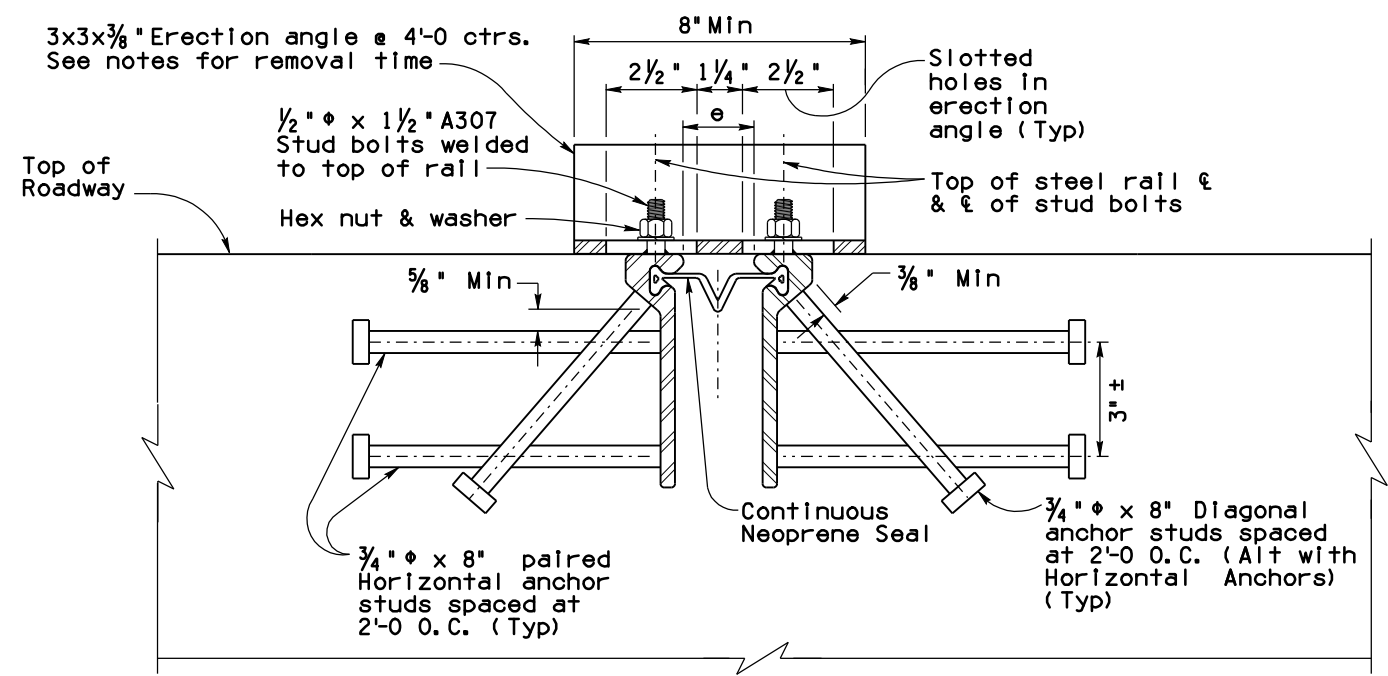
DETAIL E



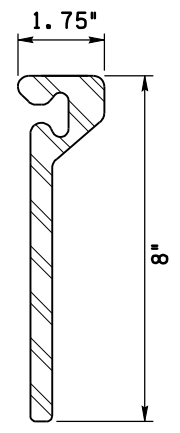
STUD WELD DETAIL



SECTION C-C
SINGLE SLOPE BARRIER



SECTION A-A



DETAIL F

NOTE:
Steel rail dimensions shown are minimums, and may vary between manufacturers.

STANDARDS ENGINEER A. ALZUBI	ARIZONA DEPARTMENT OF TRANSPORTATION INFRASTRUCTURE DELIVERY AND OPERATIONS DIVISION BRIDGE GROUP STANDARD DRAWING
RECOMMENDED FOR APPROVAL GROUP MANAGER D. EBERHART	
APPROVED	DECK JOINT ASSEMBLY FLANGELESS STRIP SEAL
STANDARDS COMMITTEE APPROVED FOR DISTRIBUTION DATE 01/20	

DRAWING NO. SD 3.03 (2 of 2)
