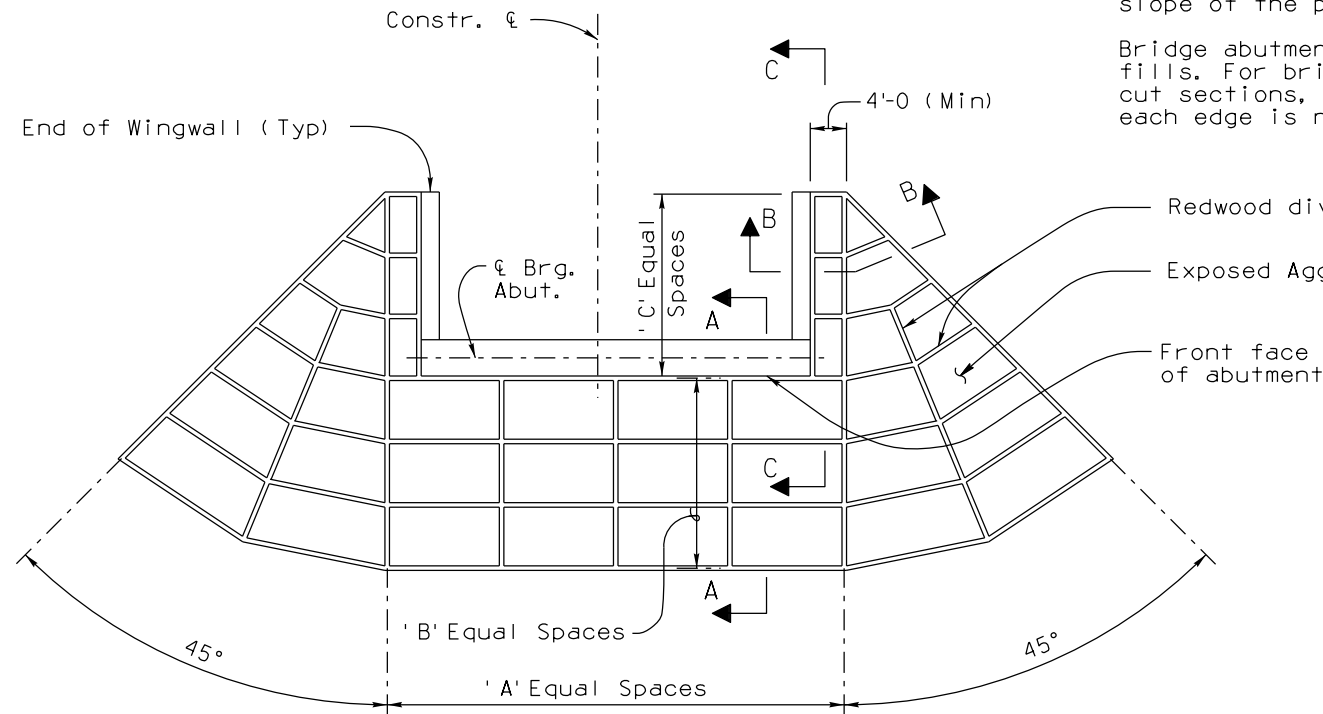


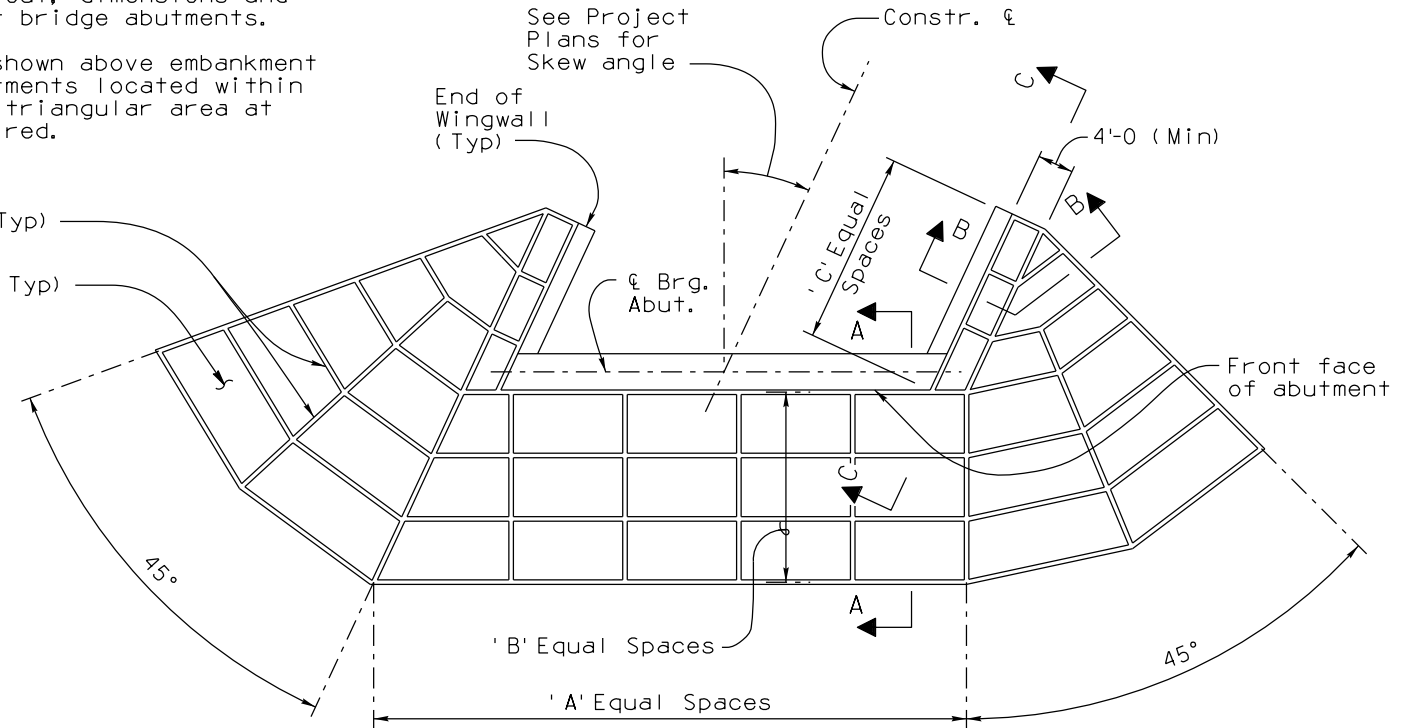
NOTES:

A, B, C and D equal spaces are measured along slope (8 feet maximum vertical and 15 feet maximum horizontal). Project Plans shall show site specific layout, dimensions and slope of the paving at bridge abutments.

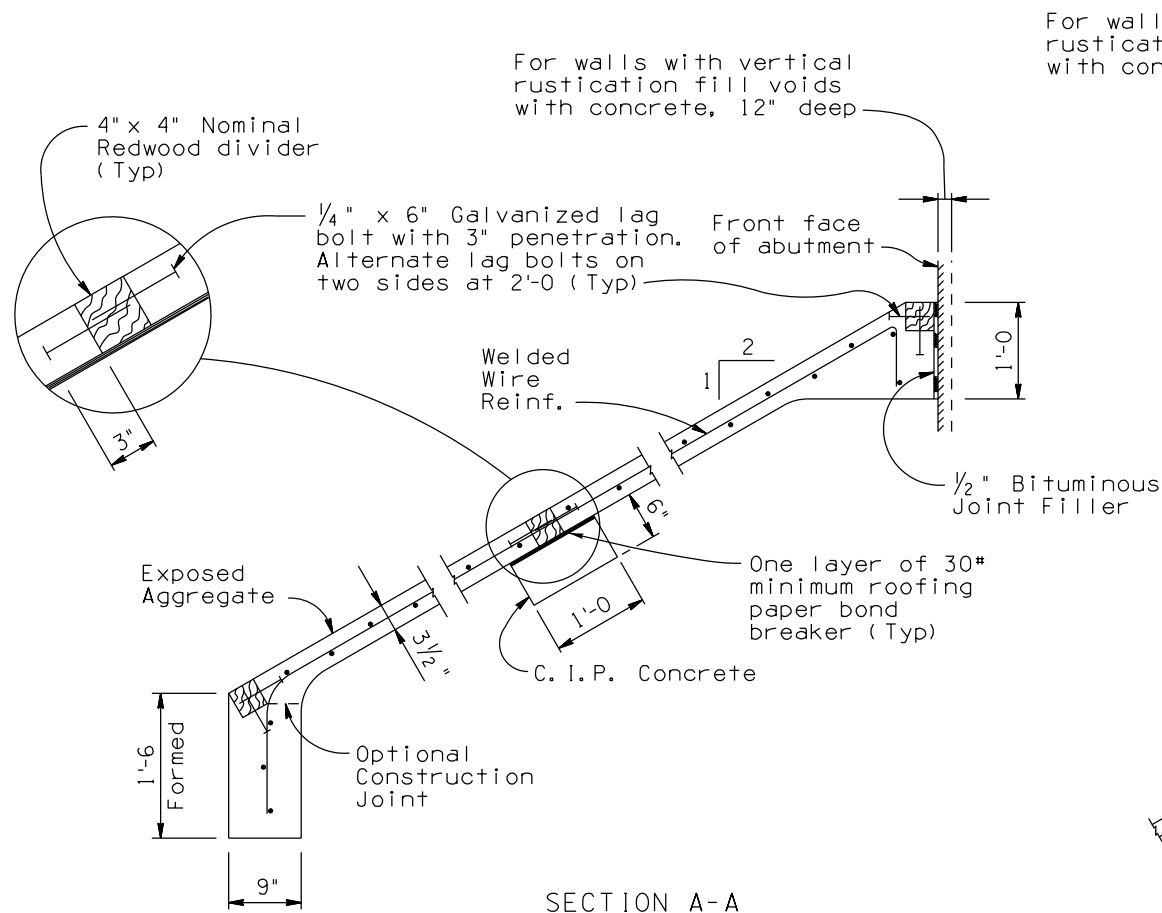
Bridge abutments are shown above embankment fills. For bridge abutments located within cut sections, the 45° triangular area at each edge is not required.



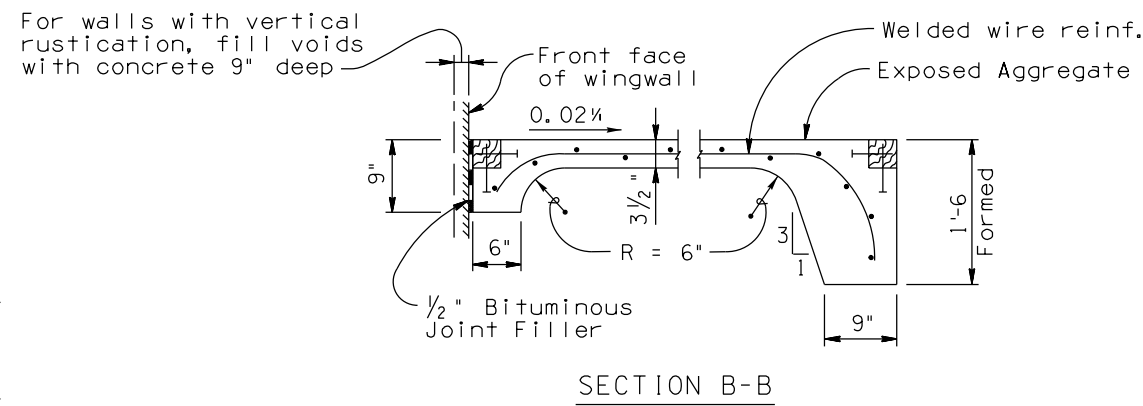
PLAN - RIGHT ANGLE BRIDGE



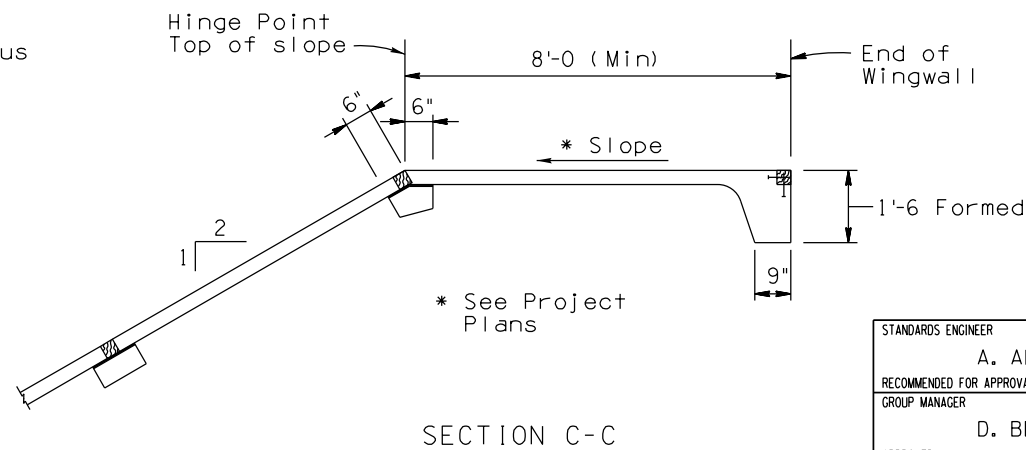
PLAN - SKEW BRIDGE



SECTION A-A



SECTION B-B



SECTION C-C

GENERAL NOTES:

Construction Specification - Arizona Department of Transportation Standard Specifications for Road and Bridge Construction, latest Edition.

Design Specifications - AASHTO LRFD Bridge Design Specifications, 8th Edition 2017.

Concrete for slope paving shall be Class "S", (f'c = 3000 psi) with exposed aggregate surface. Maximum size coarse aggregate shall be 3/4 inch.

Shotcreting shall not be allowed.

Welded Wire Reinforcement 6 x 6 - W2.5 x W2.5 shall conform to ASTM A1064.

Slope paving is shown for 2:1 slopes. Slope paving may not be required for slopes less than 3:1 (See Project Plans).

Slope Paving work will be paid for under its respective Contract Item.

STANDARDS ENGINEER A. ALZUBI	ARIZONA DEPARTMENT OF TRANSPORTATION INFRASTRUCTURE DELIVERY AND OPERATIONS DIVISION BRIDGE GROUP STANDARD DRAWING
RECOMMENDED FOR APPROVAL GROUP MANAGER D. BENTON	
APPROVED	DRAWING NO. SLOPE PAVING DETAILS
STANDARDS COMMITTEE APPROVED FOR DISTRIBUTION	DRAWING NO. SD 2.04
DATE 08/23	

ARIZONA DEPARTMENT OF TRANSPORTATION
INFRASTRUCTURE DELIVERY AND OPERATIONS DIVISION
BRIDGE GROUP STANDARD DRAWING

DRAWING NO.
SLOPE PAVING DETAILS

DRAWING NO.
SD 2.04

Note to Designer: The information presented in this Standard Drawing has been prepared in accordance with recognized engineering principles and is for general use. It should not be used for specific application without competent professional examination and verification of its suitability and applicability by a licensed professional engineer. Contents within the inner border line shall not be altered.

PRIOR DISTRIBUTION DATE 12/07