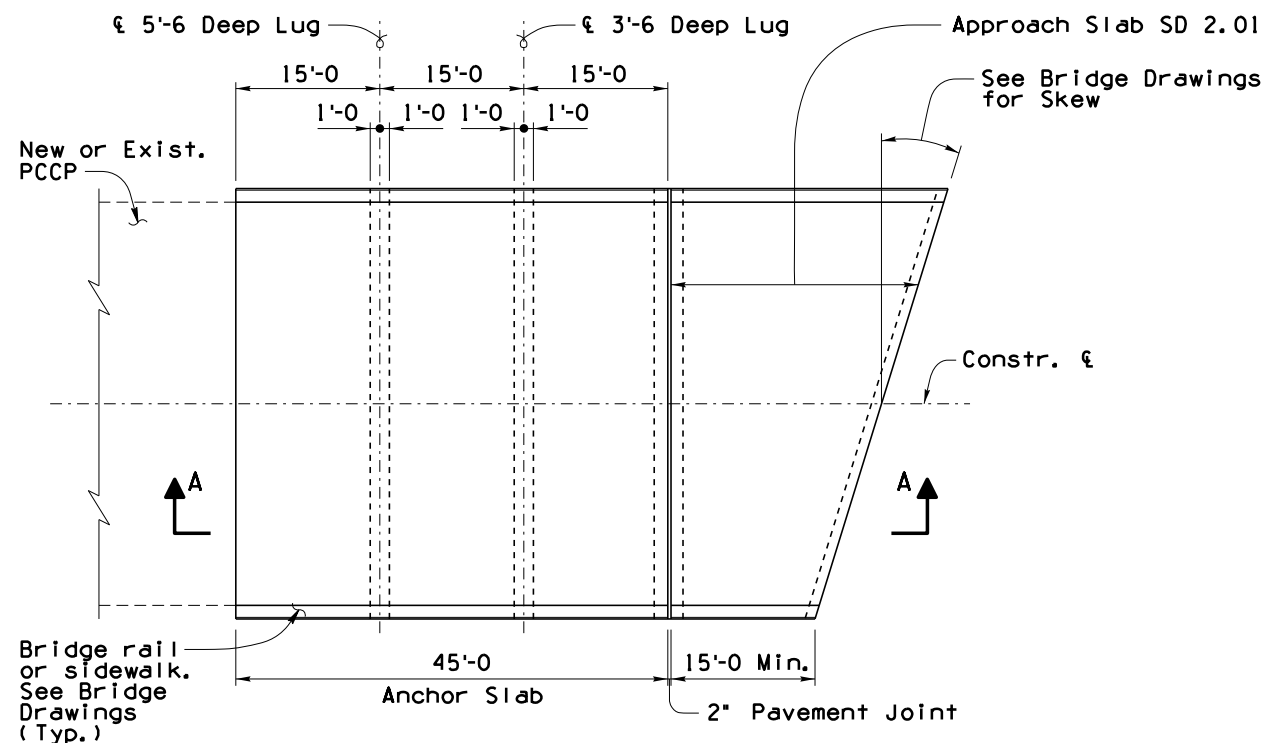


NO	DESCRIPTION OF REVISIONS	MADE BY	DATE
1	Original Issue	J.R.P.	11-00
2	General Update	S.U.H.	12-07
3			
4			

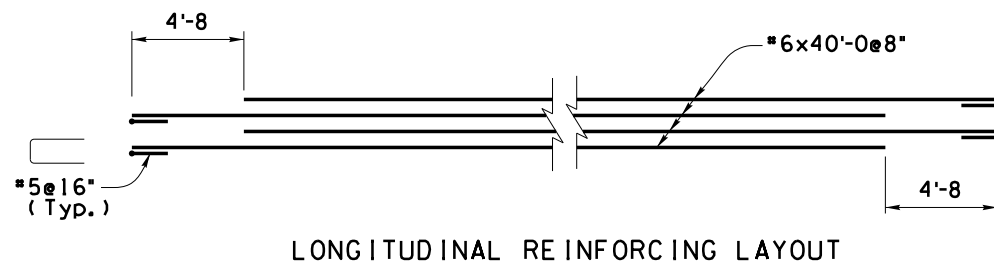
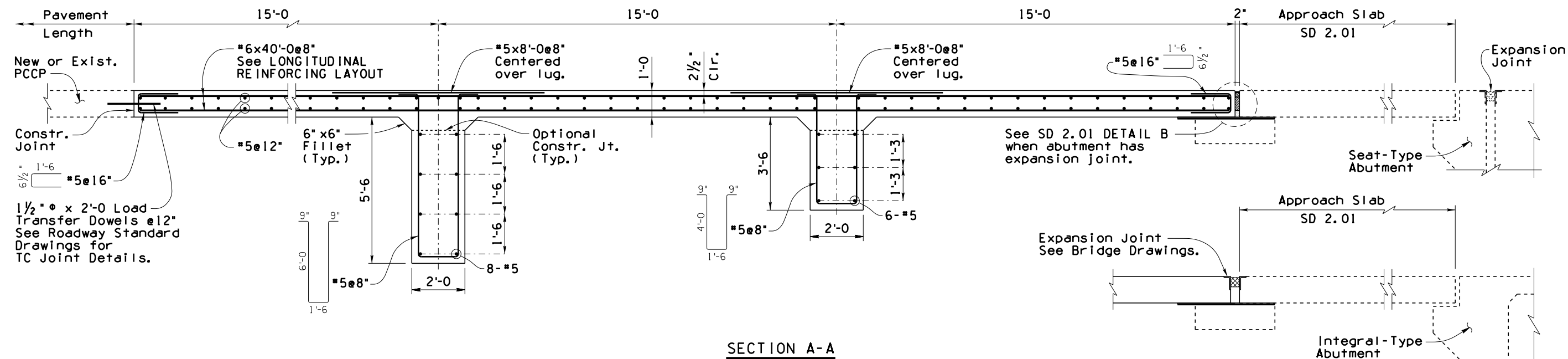
DESIGN APPROVED <i>Shafi U. Hasan</i>		ARIZONA DEPARTMENT OF TRANSPORTATION INFRASTRUCTURE DELIVERY AND OPERATIONS DIVISION BRIDGE GROUP STRUCTURE DETAIL	
APPROVED FOR DISTRIBUTION <i>Tean A. Nehme</i>		APPROACH SLAB DETAILS	
ROUTE	PROJECT NO.	FA NO.	DRAWING NO. SD 2.01
LOCATION			SHEET NO. OF

Note to Designer:
The information presented in this Standard Detail has been prepared in accordance with recognized engineering principles and is for general use. It should not be used for specific application without competent professional examination and verification of its suitability and applicability by a licensed professional engineer. Contents within the inner border line shall not be altered.

NO.	DESCRIPTION OF REVISIONS	MADE BY		DATE	
		LRP	SUH	11-00	12-07
1	Original Issue				
2	General Update				
3					
4					



PLAN - TYPE 1 ANCHOR SLAB
(For Pavement greater than 700 Ft. in length)



GENERAL NOTES:

Construction Specification - Arizona Department of Transportation Standard Specifications for Road and Bridge Construction, latest Edition.

Design Specifications - AASHTO LRFD Bridge Design Specifications, 4th Edition 2007.

All Concrete shall be Class "S" ($f'c = 4000$ psi).

Reinforcing steel shall conform to ASTM Specification A615. All reinforcing shall be furnished as Grade 60. All reinforcing shall be epoxy coated at locations above EL.4000 ft.

All bends and hooks shall meet the requirements of AASHTO Article 5.10. All bend dimensions for reinforcing steel shall be out-to-out of bars. All placement dimensions for reinforcing steel shall be to center of bars unless noted otherwise.

All reinforcing steel shall have 3 inch clear cover unless noted otherwise.

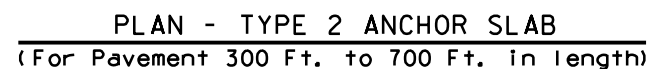
Anchor lugs shall be cast in precompacted roadway embankment or cast in forms and soil compacted to embankment requirements around lugs prior to casting the Anchor Slab.

Dimensions shall not be scaled from drawings.

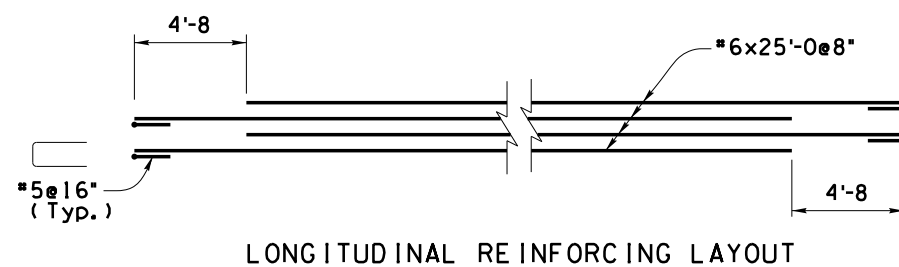
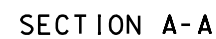
Item No. 6011372 TYPE 1 ANCHOR SLAB
Measure: Square Foot

DESIGN APPROVED <i>Shafiq U. Hasan</i>		ARIZONA DEPARTMENT OF TRANSPORTATION INFRASTRUCTURE DELIVERY AND OPERATIONS DIVISION BRIDGE GROUP STRUCTURE DETAIL	
APPROVED FOR DISTRIBUTION <i>Tean A. Nehme</i>		TYPE 1 ANCHOR SLAB DETAILS	
ROUTE	PROJECT NO.	FA NO.	DRAWING NO. SD 2.02
LOCATION			SHEET NO. OF

NO	DESCRIPTION OF REVISIONS	MADE BY	DATE
1	Original Issue	J.R.P.	11-00
2	General Update	S.J.H.	12-07
3			
4			



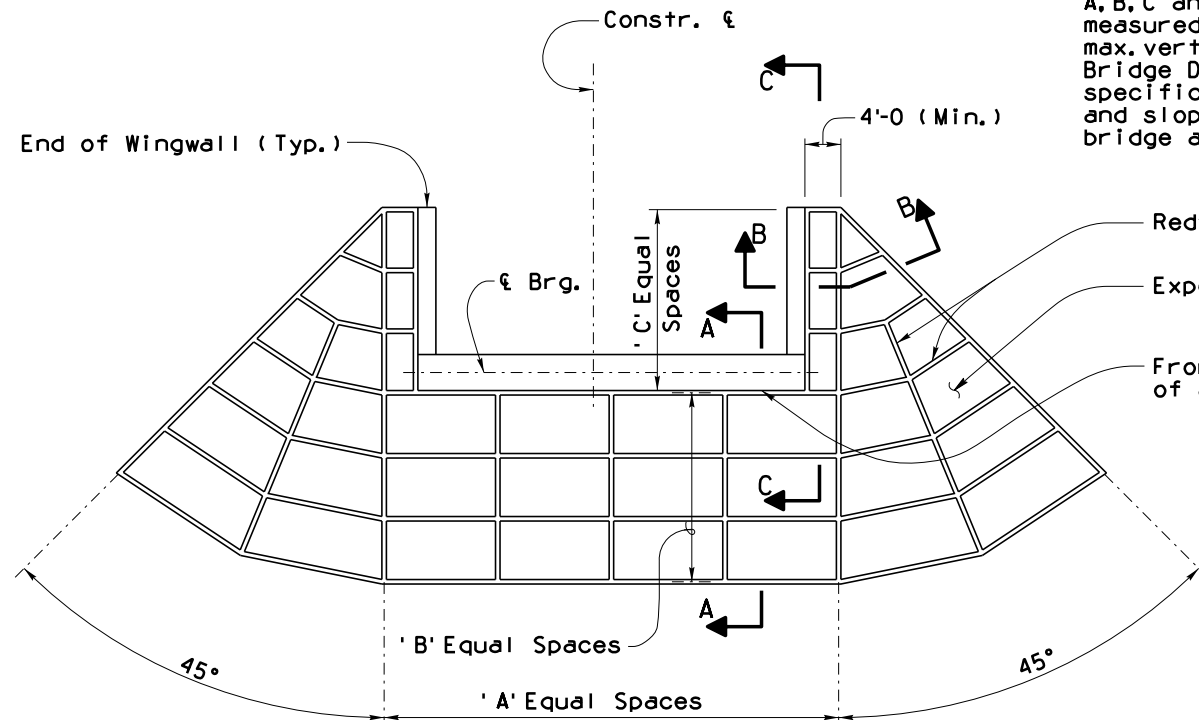
Item No. 6011373 TYPE 2 ANCHOR SLAB
Measure: Square Foot



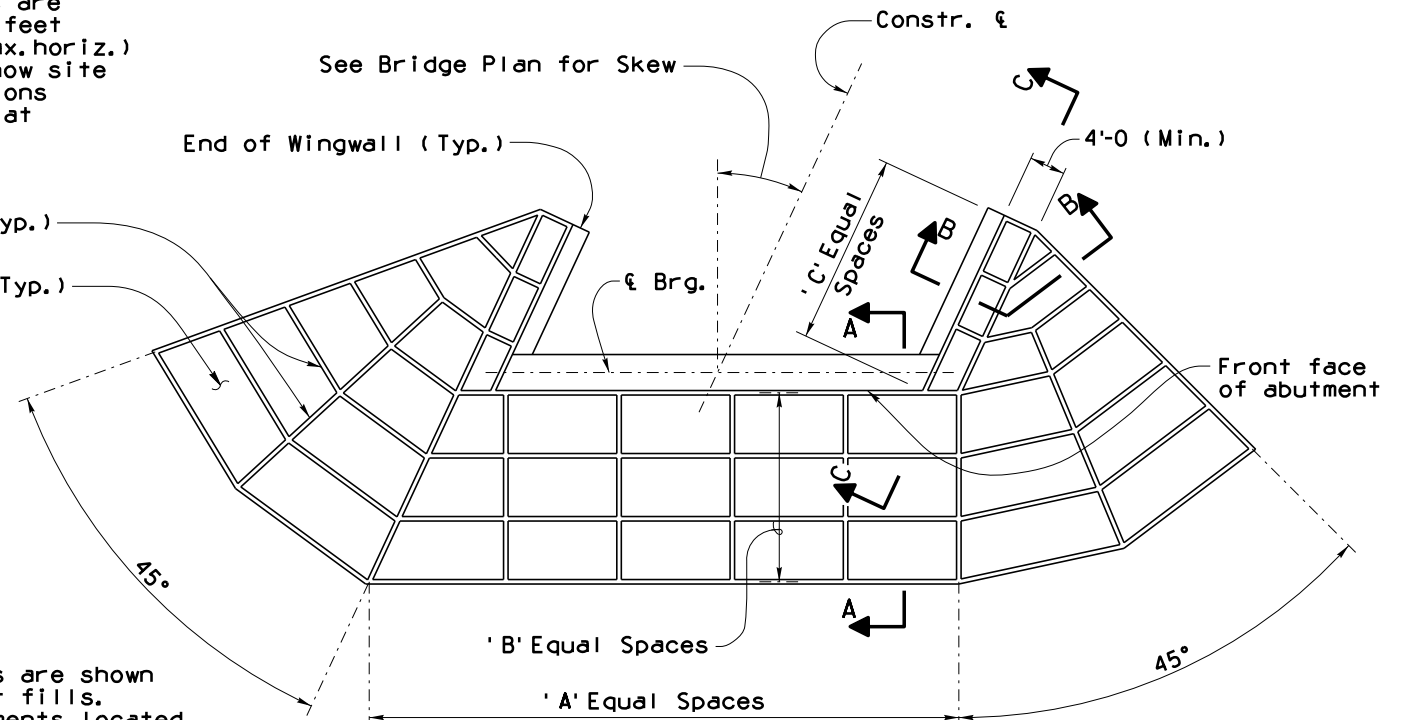
DESIGN APPROVED <i>Shafi U. Hasan</i>		ARIZONA DEPARTMENT OF TRANSPORTATION INFRASTRUCTURE DELIVERY AND OPERATIONS DIVISION BRIDGE GROUP STRUCTURE DETAIL	
APPROVED FOR DISTRIBUTION <i>Tean A. Nehme</i>		TYPE 2 ANCHOR SLAB DETAILS	
ROUTE	PROJECT NO.	FA NO.	DRAWING NO. SD 2.03
LOCATION			SHEET NO. OF

Note to Designer:
The information presented in this Standard Detail has been prepared in accordance with recognized engineering principles and is for general use. It should not be used for specific application without competent professional examination and verification of its suitability and applicability by a licensed professional engineer. Contents within the inner border line shall not be altered.

NO.	DESCRIPTION OF REVISIONS	MADE BY	DATE
1	Original Issue	H. Singh	11-02
2	Updated to include underpasses and overpasses (SD 2.05 deleted).	SLH	09-09
3			
4			



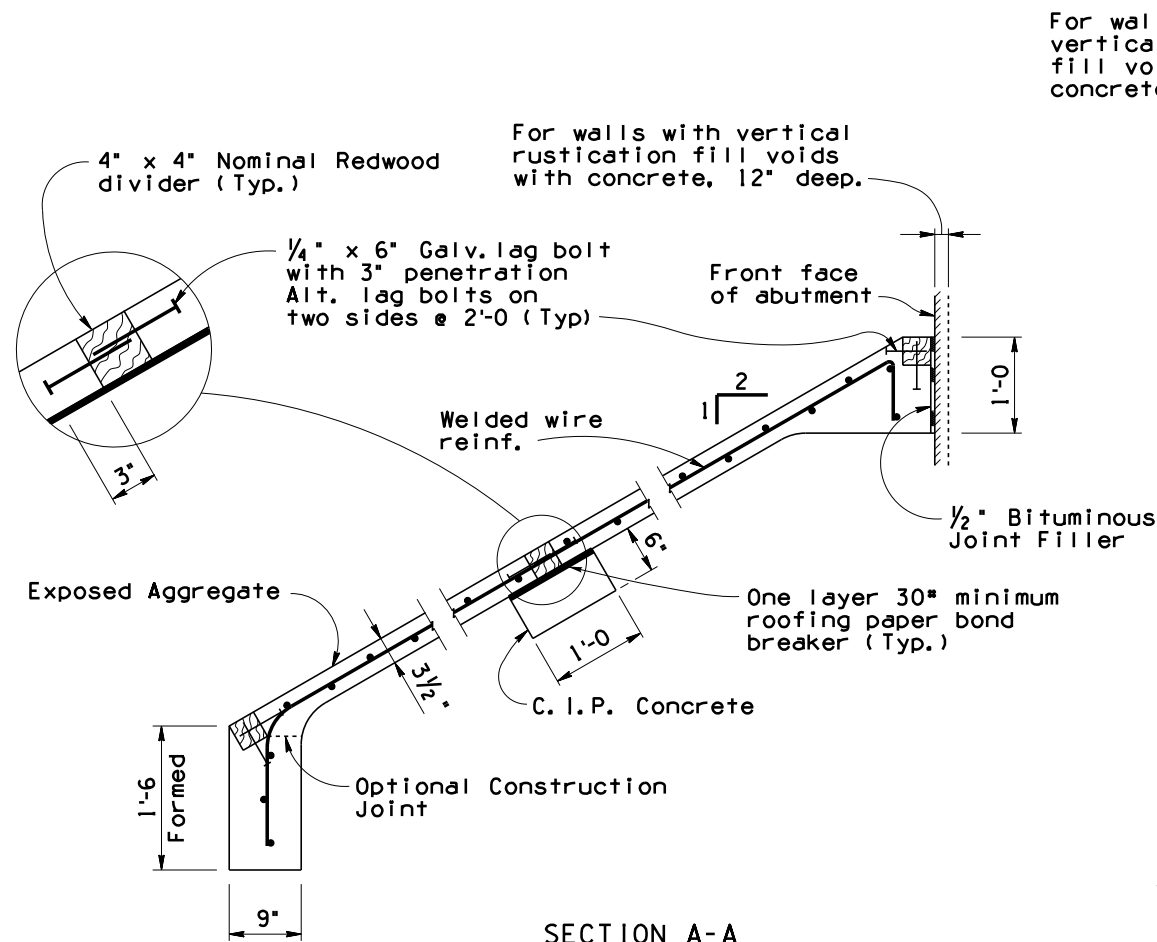
PLAN - RIGHT ANGLE BRIDGE



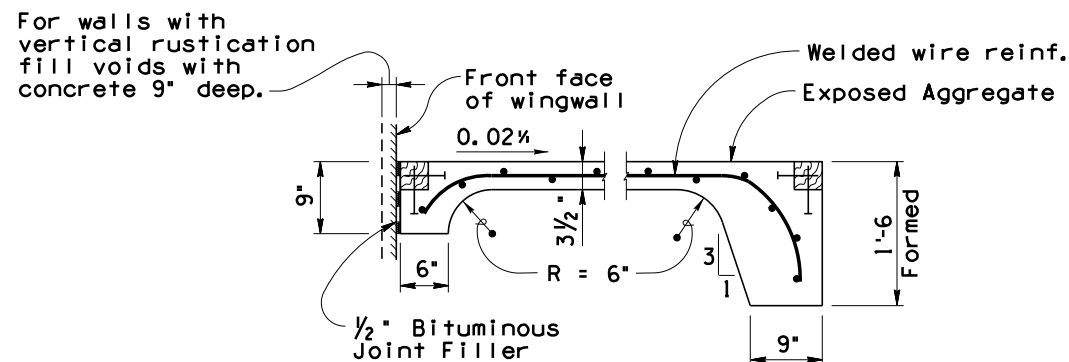
PLAN - SKEW BRIDGE

NOTE:

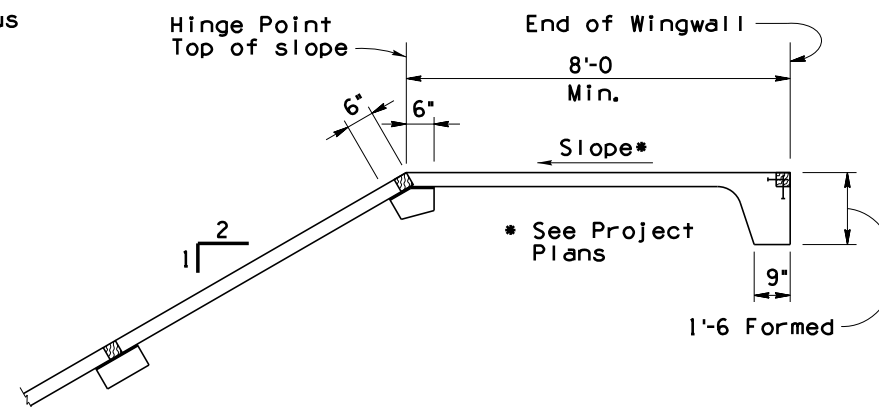
Bridge abutments are shown above embankment fills. For bridge abutments located within cut sections, the 45° triangular area at each edge is not required.



SECTION A-A



SECTION B-B



SECTION C-C

GENERAL NOTES:

Construction Specification - Arizona Department of Transportation Standard Specifications for Road and Bridge Construction, latest Edition.

Design Specifications - AASHTO LRFD Bridge Design Specifications, 4th Edition 2007.

Concrete for slope paving shall be Class "S", (f'c = 3000 psi) with exposed aggregate surface. Maximum size coarse aggregate shall be 3/4 inch. Shotcreting shall not be allowed.

Welded Wire Reinforcement 6 x 6 - W2.5 x W2.5 shall conform to ASTM A185.

Slope paving is shown for 2:1 slopes. Slope paving may not be required for slopes less than 3:1 (See Project Plans).

Item No. 9210007 SLOPE PAVING
Measure: Square Yards

DESIGN APPROVED <i>Shafiq U. Hasan</i>		ARIZONA DEPARTMENT OF TRANSPORTATION INFRASTRUCTURE DELIVERY AND OPERATIONS DIVISION BRIDGE GROUP STRUCTURE DETAIL	
APPROVED FOR DISTRIBUTION <i>Tean A. Nehme</i>		SLOPE PAVING DETAILS	
ROUTE	PROJECT NO.	FA NO.	DRAWING NO. SD 2.04
LOCATION			SHEET NO. OF