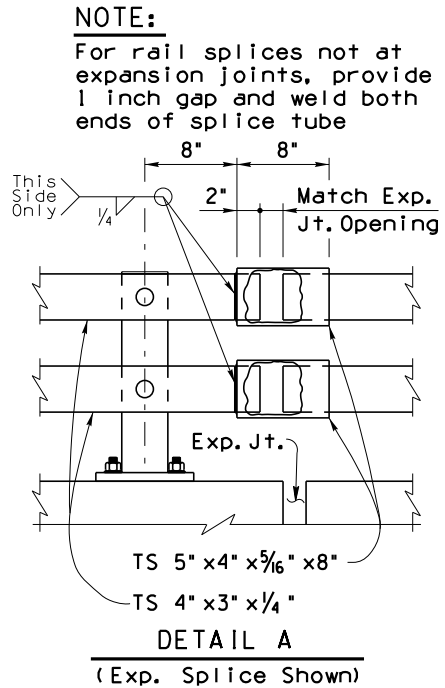
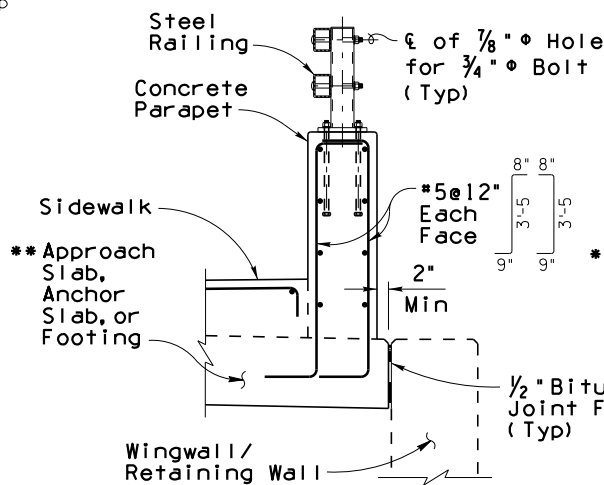
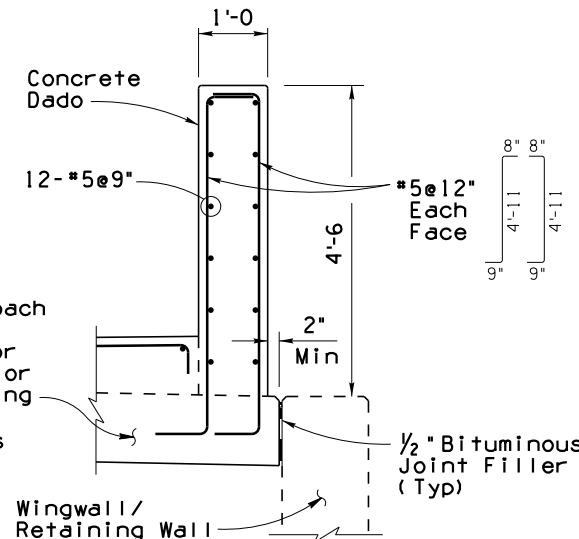


PRIOR DISTRIBUTION DATE	03/09
-------------------------	-------

ELEVATION AT END POST

** See SD 1.10 for footing details



SECTION C-C

[illegible]

PLATE DETAIL

Diagram illustrating the cross-section of a bridge deck with reinforcement details:

- Deck width: 3'-0"
- Deck height: 26"
- Top of Deck: 10"
- Reinforcement details:
 - #5 Pier or Open Joint
 - 2 1/2" (Typ)
 - 2'-0" (Typ)
 - 1/2" Bituminous Joint Filler (Typ)
 - Discontinue longitudinal #5's @ Pier
 - #5 @ 6" (Typ)
 - #5 @ 12" (Typ)
 - #5 Continuous
- Dimensions: 3'-5" (Typ), 3'-5" (Typ), 3'-5" (Typ), 3'-5" (Typ)

OPEN JOINT SECTION
AT CONTINUOUS PIERS ONLY

Item	Combination Pedestrian-Traffic Bridge Railing
Item No.	6011132
Measurement	Linear Foot

STANDARDS ENGINEER

A. ALZUBI

RECOMMENDED FOR

D. EBERHART

APPROVED

CELEBRATING 25 YEARS OF SERVICE TO THE COMMUNITY

ARIZONA DEPARTMENT OF TRANSPORTATION
INFRASTRUCTURE DELIVERY AND OPERATIONS DIVISION
BRIDGE GROUP STANDARD DRAWING

COMBINATION PEDESTRIAN-TRAFFIC
BRIDGE RAILING

DRAWING NO.

SD 1.12