

Janet Napolitano
Governor

ARIZONA DEPARTMENT OF ENVIRONMENTAL QUALITY

1110 West Washington Street • Phoenix, Arizona 85007
(602) 771-2300 • www.azdeq.gov



Stephen A. Owens
Director

February 19, 2008

Bernardita Calinao, Ph.D., Environmental Manager
The Louis Berger Group, Inc.
2345 E. Thomas Road, Suite 220
Phoenix, AZ 85016-7818

Dear Ms. Calinao:

We received your January 18, 2008 inquiry regarding sensitive environmental resources within the Prescott Municipal Airport and its general vicinity. The only information we are able to provide is that Granite Creek is listed as an impaired water for dissolved oxygen. Also data shows there may be future concerns regarding E coli and mercury levels. Any future activities near Granite Creek could not contribute to further any pollutants.

Without specifying what information you are seeking or the possible future activities, the Water Quality Division is unable to provide further information.

Sincerely,

Linda Taunt, Deputy Director
Water Quality Division

ER08-0006



THE STATE OF ARIZONA
GAME AND FISH DEPARTMENT

5000 W. CAREFREE HIGHWAY
PHOENIX, AZ 85086-5000
(602) 942-3000 • WWW.AZGFD.GOV

GOVERNOR

JANET NAPOLITANO

COMMISSIONERS

CHAIRMAN, MICHAEL M. GOLIGHTLY, FLAGSTAFF

WILLIAM H. MCLEAN, GOLD CANYON

BOB HERNBRODE, TUCSON

JENNIFER L. MARTIN, PHOENIX

ROBERT R. WOODHOUSE, ROLL

DIRECTOR

DUANE L. SHROUFE

DEPUTY DIRECTOR

STEVE K. FERRELL



January 22, 2007

Bernardita Calinao, Ph.D.
The Louis Berger Group, Inc.
2345 E. Thomas Road, Suite 220
Phoenix, Arizona 85016

Re: Prescott Municipal Airport

The Arizona Game and Fish Department (Department) has reviewed your request, received January 18, 2007, regarding special status species information associated with the above-referenced project area. The Department's Arizona On-Line Environmental Review Tool (Tool) has been accessed and current records indicate the presence of no special status species in the project vicinity (3-mile radius).

This information can now be provided to you almost instantaneously and is designed to replace the need for requests via writing by fax, mail, or email for most projects. The information is generated utilizing an interactive on-line tool, which can be accessed via the Internet at <http://www.azgfd.gov/hgis/>. The Tool allows you to submit land and water projects on-line by following a few simple steps.

The Department has no further comments at this time. Please refer to the project receipt for general project type concerns. If you have any questions regarding this letter, please contact me at (623) 236-7513. General status information, county and watershed distribution lists and abstracts for some special status species are also available on our web site at <http://www.azgfd.gov/hdms>.

Sincerely,

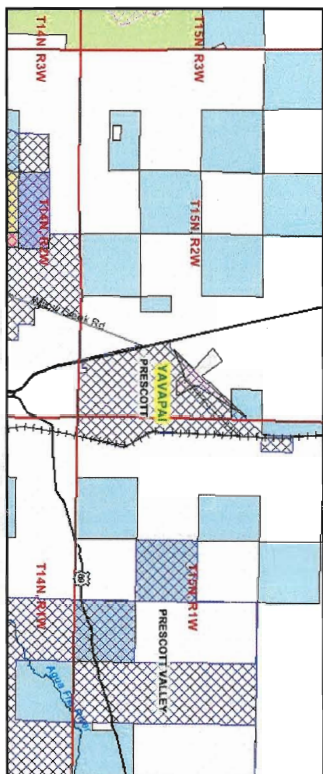
Daniel E. Nelson

Project Evaluation Program Specialist

Search ID: 20080122005004

Date: 1/22/2008 12:06:14 PM

The Department appreciates the opportunity to provide in-depth comments and project review when additional information or environmental documentation becomes available.



miles of Project Vicinity:

Name	Common Name	ESA	USFS	BLM	State
Cicindela oregana maritropa	Maritopa Tiger Beetle	SC	S	S	
Haliastur leucocephalus (wintering pop.)	Bald Eagle	SC	S		WSC
Megascops alcyon	Belted Kingfisher				WSC
Phlox amabilis	Arizona Phlox		S		

Submitted By: PEP Project

On behalf of: CONSULTING

Project Search ID: 20080122005004

Date: 1/22/2008 12:06:08 PM

new runways, terminals/concourses, other facilities

Project Coordinates (UTM Zone 12-NAD 83): 369509.382, 3836061.023

meter

Project Area: 202.519 acres

Project Perimeter: 7678.238 meter

County: YAVAPAI

USGS 7.5 Minute Quadrangle ID: 850

Quadrangle Name: CHINO VALLEY SOUTH

Project locality is not anticipated to change

Location Accuracy Disclaimer

correctness of the Project Review Receipt content

Arizona's On-line Environmental Review Tool

Search ID: 20080122005004

Project Name: Prescott Municipal Airport

Date: 1/22/2008 12:06:14 PM

Please review the entire receipt for project type recommendations and/or species or location information and retain a copy for future reference. If any of the information you provided did not accurately reflect this project, or if project plans change, another review should be conducted, as this determination may not be valid.

Arizona's On-line Environmental Review Tool:

1. This On-line Environmental Review Tool inquiry has generated recommendations regarding the potential impacts of your project on Special Status Species (SSS) and other wildlife of Arizona. SSS include all U.S. Fish and Wildlife Service federally listed, U.S. Bureau of Land Management sensitive, U.S. Forest Service sensitive, and Arizona Game and Fish Department (Department) recognized species of concern.
2. These recommendations have been made by the Department, under authority of Arizona Revised Statutes Title 5 (Amusements and Sports), 17 (Game and Fish), and 28 (Transportation). These recommendations are preliminary in scope, designed to provide early considerations for all species of wildlife, pertinent to the project type you entered.
3. This receipt, generated by the automated On-line Environmental Review Tool does not constitute an official project review by Department biologists and planners. Further coordination may be necessary as appropriate under the National Environmental Policy Act (NEPA) and/or the Endangered Species Act (ESA).

The U.S. Fish and Wildlife Service (USFWS) has regulatory authority over all federally listed species under the ESA. Contact USFWS Ecological Services Offices: <http://arizonaes.fws.gov/>.

Phoenix Main Office
2321 W. Royal Palm Road, Suite 103
Phoenix, AZ 85021
Phone 602-242-0210
Fax 602-242-2513

Tucson Sub-Office
201 North Bonita, Suite 141
Tucson, AZ 85745
Phone 520-670-6144
Fax 520-670-6154

Flagstaff Sub-Office
323 N. Leroux Street, Suite 101
Flagstaff, AZ 86001
Phone 928-226-0614
Fax 928-226-1099

Disclaimer:

1. This is a preliminary environmental screening tool. It is not a substitute for the potential knowledge gained by having a biologist conduct a field survey of the project area.
2. The Department's Heritage Data Management System (HDMS) data is not intended to include potential distribution of special status species. Arizona is large and diverse with plants, animals, and environmental conditions that are ever changing. Consequently, many areas may contain species that biologists do not know about or species previously noted in a particular area may no longer occur there.
3. Not all of Arizona has been surveyed for special status species, and surveys that have been conducted have varied greatly in scope and intensity. Such surveys may reveal previously undocumented population of species of special concern.
4. HDMS data contains information about species occurrences that have actually been reported to the Department.

Arizona Game and Fish Department Mission

To conserve, enhance, and restore Arizona's diverse wildlife resources and habitats through aggressive protection and

management programs, and to provide wildlife resources and safe watercraft and off-highway vehicle recreation for the enjoyment, appreciation, and use by present and future generations.

Project Category: Transportation & Infrastructure, Airports, Construction of new runways, terminals/concourses, other facilities

Project Type Recommendations:

Based on the project type entered; coordination with Arizona Department of Environmental Quality may be required (<http://www.azdeq.gov/>).

Based on the project type entered; coordination with State Historic Preservation Office may be required
<http://www.pr.state.az.us/partnerships/shpo/shpo.html#anchor561695>

Based on the project type entered; coordination with U.S. Army Corps of Engineers may be required
(<http://www.spl.usace.army.mil/regulatory/phonedir.html>)

Consider designs and tower modifications that reduce or eliminate impacts to migratory birds. Please refer to the U.S. Fish and Wildlife Service's page on cellular towers in Arizona
<http://www.fws.gov/arizonaaes/CeltTower.htm>. On this page there are guidelines for tower siting, construction, operation, and decommissioning. Also see the Service's Interim Guidelines for

Recommendations on Communications Tower Siting, Construction, Operation, and Decommissioning,
<http://www.fws.gov/habitatconservation/communicationtowers.htm>.

During the planning stages of your project, please consider the local or regional needs of wildlife in regards to movement, connectivity, and access to habitat needs. Loss of this permeability prevents wildlife from accessing resources, finding mates, reduces gene flow, prevents wildlife from re-colonizing areas where local extirpations may have occurred, and ultimately prevents wildlife from contributing to ecosystem functions, such as pollination, seed dispersal, control of prey numbers, and resistance to invasive species. In many cases, streams and washes provide natural movement corridors for wildlife and should be maintained in their natural state. Uplands also support a large diversity of species, and should be contained within important wildlife movement corridors. In addition, maintaining biodiversity and ecosystem functions can be facilitated through improving designs of structures, fences, roadways, and culverts to promote passage for a variety of wildlife.

Planning: consider impacts of lighting intensity on mammals and birds and develop measures or alternatives that can be taken to increase human safety while minimizing potential impacts to wildlife. Conduct wildlife surveys to determine species within project area, and evaluate proposed activities based on species biology and natural history to determine if artificial lighting may disrupt behavior patterns or habitat use.

The Department recommends that wildlife surveys are conducted to determine if noise-sensitive species occur within the project area. Avoidance or minimization measures could include conducting project activities outside of breeding seasons.

The Department requests further coordination to provide project/species specific recommendations, please contact Project Evaluation Program directly.

Arizona's On-line Environmental Review Tool

Search ID: 20080122005004

Project Name: Prescott Municipal Airport

Date: 1/22/2008 12:06:14 PM

Recommendations Disclaimer:

1. Potential impacts to fish and wildlife resources may be minimized or avoided by the recommendations generated from information submitted for your proposed project.
2. These recommendations are proposed actions or guidelines to be considered during **preliminary project development**.
3. Additional site specific recommendations may be proposed during further NEPA/ESA analysis or through coordination with affected agencies.
4. Making this information directly available does not substitute for the Department's review of project proposals, and should not decrease our opportunity to review and evaluate additional project information and/or new project proposals.
5. The Department is interested in the conservation of all fish and wildlife resources, including those Special Status Species listed on this receipt, and those that may have not been documented within the project vicinity as well as other game and nongame wildlife.
6. **Further coordination requires the submittal of this initialed and signed Environmental Review Receipt with a cover letter and project plans or documentation that includes project narrative, acreage to be impacted, how construction or project activity(s) are to be accomplished, and project locality information (including site map).**
7. Upon receiving information by AZGFD, please allow 30 days for completion of project reviews. Mail requests to:

**Project Evaluation Program, Habitat Branch
Arizona Game and Fish Department
5000 West Carefree Highway
Phoenix, Arizona 85086-5000
Phone Number: (623) 236-7600
Fax Number: (623) 236-7366**

Terms of Use

By using this site, you acknowledge that you have read and understand the terms of use. Department staff may revise these terms periodically. If you continue to use our website after we post changes to these terms, it will mean that you accept such changes. If at any time you do not wish to accept the Terms, you may choose not to use the website.

1. This Environmental Review and project planning website was developed and intended for the purpose of screening projects for potential impacts on resources of special concern. By indicating your agreement to the terms of use for this website, you warrant that you will not use this website for any other purpose.
2. Unauthorized attempts to upload information or change information on this website are strictly prohibited and may be punishable under the Computer Fraud and Abuse Act of 1986 and/or the National Information Infrastructure Protection Act.
3. The Department reserves the right at any time, without notice, to enhance, modify, alter, or suspend the website and to terminate or restrict your access to the website.
4. This Environmental Review is based on the project study area that was entered. The review must be redone if the project study area, location, or the type of project changes. If additional information becomes available, this review may need to be reconsidered.
5. A signed and initialed copy of the Environmental Review Receipt indicates that the entire receipt has been read by the signer of the Environmental Review Receipt.

Security:

The Environmental Review and project planning web application operates on a complex State computer system. This system is monitored to ensure proper operation, to verify the functioning of applicable security features, and for other like purposes. Anyone using

Arizona's On-line Environmental Review Tool

Search ID: 20080122005004

Project Name: Prescott Municipal Airport

Date: 1/22/2008 12:06:14 PM

this system expressly consents to such monitoring and is advised that if such monitoring reveals possible evidence of criminal activity, system personnel may provide the evidence of such monitoring to law enforcement officials. Unauthorized attempts to upload or change information; to defeat or circumvent security measures; or to utilize this system for other than its intended purposes are prohibited.

This website maintains a record of each environmental review search result as well as all contact information. This information is maintained for internal tracking purposes. Information collected in this application will not be shared outside of the purposes of the Department.

If the Environmental Review Receipt and supporting material are not mailed to the Department or other appropriate agencies within six (6) months of the Project Review Receipt date, the receipt is considered to be null and void, and a new review must be initiated.

Print this Environmental Review Receipt using your Internet browser's print function and keep it for your records. Signature of this receipt indicates the signer has read and understands the information provided.

Signature: _____

Date: _____

Proposed Date of Implementation: _____

Please provide point of contact information regarding this Environmental Review.

Application or organization responsible for project implementation

Agency/organization: _____

Contact Name: _____

Address: _____

City, State, Zip: _____

Phone: _____

E-mail: _____

Person Conducting Search (if not applicant)

Agency/organization: _____

Contact Name: _____

Address: _____

Arizona's On-line Environmental Review Tool

Search ID: 20080122005004

Project Name: Prescott Municipal Airport

Date: 1/22/2008 12:06:14 PM

City, State, Zip: _____

Phone: _____

E-mail: _____



DEPARTMENT OF THE ARMY
LOS ANGELES DISTRICT, CORPS OF ENGINEERS
ARIZONA-NEVADA AREA OFFICE
3636 NORTH CENTRAL AVENUE, SUITE 900
PHOENIX, ARIZONA 85012-1939

REPLY TO
ATTENTION OF:

January 30, 2008

Office of the Chief
Regulatory Division

Bernardita Calinao, Ph.D.
Environmental Manager
The Louis Berger Group, Inc.
2345 East Thomas Road, Suite 220
Phoenix, Arizona 85016-7818

File Number: 2008-00132-DE

Dear Dr. Calinao:

It has come to our attention that the City of Prescott plans to expand the existing Prescott Municipal Airport in the vicinity of Bottleneck Wash located within Sections 24 & 25, T15N, R2W, Prescott, Yavapai County, Arizona.

This activity may require a Department of the Army permit issued under Section 404 of the Clean Water Act. A Section 404 permit is required for the discharge of dredged or fill material into the "waters of the United States," including adjacent wetlands. Examples of activities requiring a permit are placing bank protection, temporary or permanent stock-piling of excavated material, grading roads, grading (including vegetative clearing operations) that involves the filling of low areas or leveling the land, constructing weirs or diversion dikes, constructing approach fills, and discharging dredged or fill material as part of any other activity.

Enclosed you will find a permit application form and a pamphlet that describes our regulatory program. If you have questions, please contact Daisy Eldridge at (602) 640-5385, x268. Please refer to file number 2008-00132-DE in your reply.

Sincerely,

for Cindy Lester, P.E.
Chief, Arizona Branch
Regulatory Division

Enclosures

YAVAPAI COUNTY

Development Services

Prescott - (928) 771-3214 Fax: (928) 771-3432
Cottonwood - (928) 639-8151 Fax: (928) 639-8153



Flood Control District

Prescott - (928) 771-3197 Fax: (928) 771-3427
Cottonwood - (928) 639-8151 Fax: (928) 639-8118

500 S. Marina Street, Prescott, AZ 86303 and 10 S. 6th Street, Cottonwood, AZ 86326

Addressing – Building Safety – Customer Service & Permitting – Environmental – Flood Control District – Land Use – Planning & Design Rev

Mr. Bernardita Calinao, PhD
Louis Verger Group, Inc.
2345 E. Thomas Road, Suite 220
Phoenix, Arizona 85016

RE: City of Prescott Municipal Airport – Floodplain Information

Dear Bernardita:

I've enclosed the following information:

1. GIS Map Detailing Floodplain, Parcel, Roads and 2007 Aerial Photograph
2. Copy of FEMA Flood Insurance Rate Map Panel 04025C1710 F.
3. Copy of Centerpointe South Letter of Map Revision Letter and Annotated FIRM Map.

I would recommend contacting Richard Mastin at the City for additional information at (928) 777-1273. Richard is the City's Floodplain Administrator and may have more detailed information than I've provided.

If you have any questions, please contact me at (928) 442-5414.

Sincerely,
YAVAPAI COUNTY FLOOD CONTROL DISTRICT

Jeff M. Low

Jeffrey Low, CFM
Floodplain Unit Manager

Richard Mastin, City of Prescott Development Services



Flood Map

LEGEND

- Road Centerlines
- Parcels
- FEMA Floodplain Zones
 - Zone A or AE
 - Zone AE Floodway
 - Zone D
 - Zone Shaded X
 - Zone Unshaded X



0 1000 2000
1 in. = 2000 ft.



Yavapai County assumes no responsibility for errors, omissions, and/or inaccuracies in this mapping product.

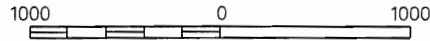
January 31, 2008

where elevations or depths have been established.

mine if flood insurance is available, contact an insurance agent or National Flood Insurance Program at (800) 638-6620.



APPROXIMATE SCALE IN FEET



1720

NATIONAL FLOOD INSURANCE PROGRAM

JLOW

FIRM

FLOOD INSURANCE RATE MAP

YAVAPAI COUNTY,
ARIZONA AND
INCORPORATED AREAS

PANEL 1720 OF 3925

(SEE MAP INDEX FOR PANELS NOT PRINTED)

CONTAINS:
COMMUNITY

NUMBER PANEL SUFFIX

PRESCOTT VALLEY, TOWN OF	040121	1720	F
PRESCOTT, CITY OF	040098	1720	F
YAVAPAI COUNTY, UNINCORPORATED AREAS	040093	1720	F

MAP NUMBER
04025C1720 F

EFFECTIVE DATE:
JUNE 6, 2001



Federal Emergency Management Agency

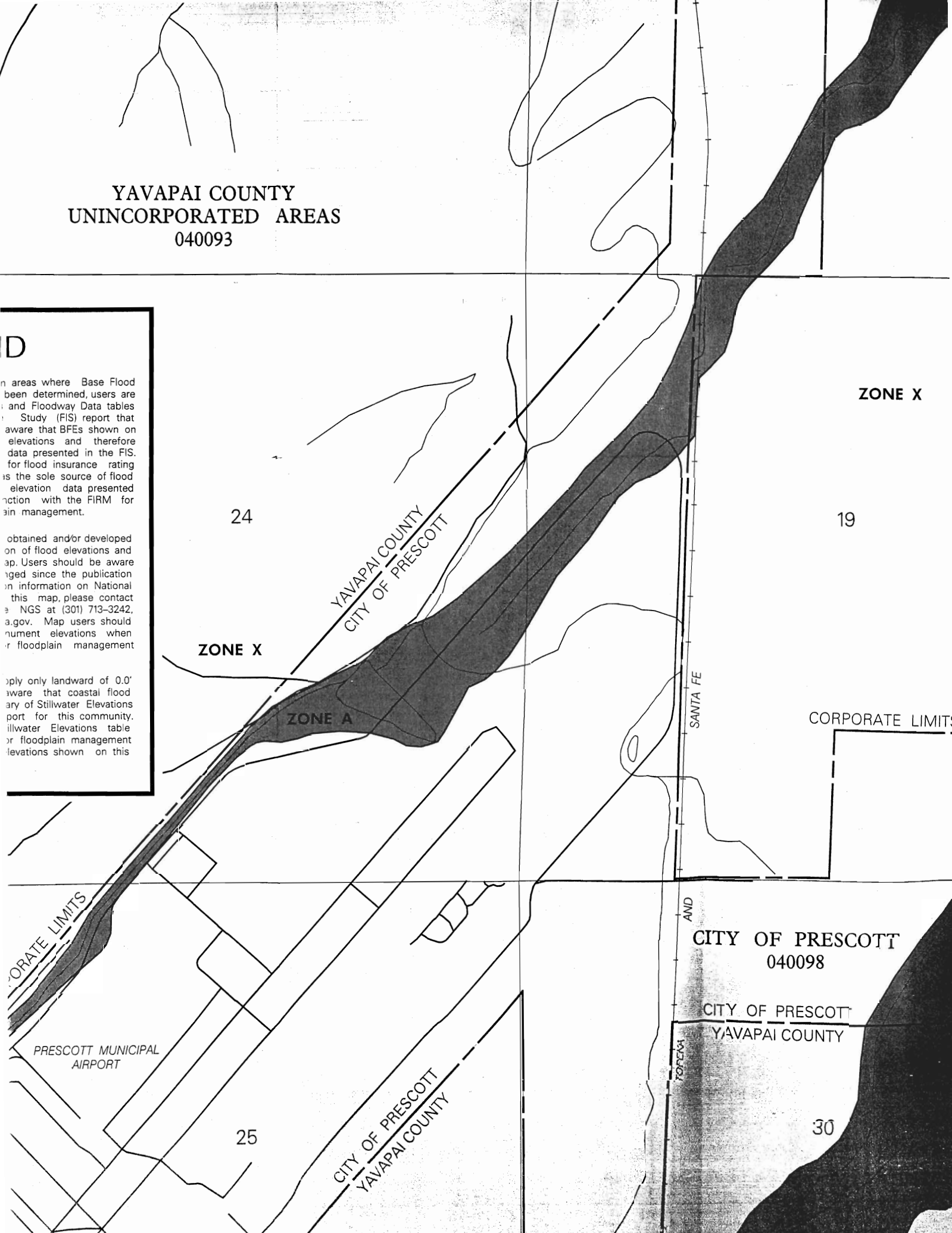
YAVAPAI COUNTY UNINCORPORATED AREAS 040093

D

n areas where Base Flood
been determined, users are
and Floodway Data tables
Study (FIS) report that
aware that BFEs shown on
elevations and therefore
data presented in the FIS.
for flood insurance rating
is the sole source of flood
elevation data presented
action with the FIRM for
ain management.

obtained and/or developed
on of flood elevations and
ap. Users should be aware
aged since the publication
on information on National
this map, please contact
e NGS at (301) 713-3242,
a.gov. Map users should
nument elevations when
r floodplain management

ply only landward of 0.0'
aware that coastal flood
ary of Stillwater Elevations
port for this community.
illwater Elevations table
or floodplain management
elevations shown on this



ZONE X

24

19

ZONE X

ZONE A

YAVAPAI COUNTY
CITY OF PRESCOTT

SANTA FE

CORPORATE LIMITS

CORPORATE LIMITS

PRESCOTT MUNICIPAL
AIRPORT

25

CITY OF PRESCOTT
YAVAPAI COUNTY

AND

CITY OF PRESCOTT
040098

CITY OF PRESCOTT
YAVAPAI COUNTY

30



July 23, 2007

FEMA National Service Provider
3601 Eisenhower Avenue
Alexandria, VA 22304-6425

Re: Request for Letter of Map Revision (LOMR) of Granite Creek for Centerpointe South

MT-2 Division Reviewer,

This is a request for a LOMR of Granite Creek for Centerpointe South. There is no Flood Insurance Study (FIS) for this location and the creek is an approximate Zone A on the effective Flood Insurance Rate Maps (FIRMs). There is no fee for this LOMR since it is based solely on submission of more detailed data.

Please refer to FEMA LOMA Case # 05-09-0850A for the floodplain analysis just downstream of this reach. This LOMA was completed for Granite Creek between Centerpointe East and West subdivisions. Because this analysis was accepted by FEMA, we are matching the locations of cross-sections 24 and 25, and we have used the 100-year base flood elevation (BFE) of cross-section 24 as the downstream known water surface elevation for this subcritical reach. Furthermore, to update the FIRMs, it is Lyon Engineering's recommendation that FEMA include the analysis results from the aforementioned approved LOMA from Case # 05-09-0850A in this LOMR.

As with the aforementioned LOMA, the hydrology for this LOMR has been completed by DAVA & Associates, Inc. in the Hydrology Report for Airport Connector and Willow Creek Road, March 1998. This hydrology was accepted by FEMA, and a 100-year discharge of 15,500 cfs was determined.

Please note that the effective FIRM shows this reach is in the unincorporated area of Yavapai County (Community # 040093). However, this area has now been completely annexed into the City of Prescott (Community # 040098). Lyon Engineering recommends that FEMA update their corporate boundaries in this area.

Also note that the effective FIRMs are on vertical datum NGVD 1929. All of Lyon Engineering's analyses and exhibits are shown on vertical datum NAVD 1988. The most accurate conversion in the area is $\text{NGVD 1929} + 3.058' = \text{NAVD 1988}$.

Furthermore, both the upstream and downstream floodplain limits of this detailed study do not tie into the effective Zone A floodplain limits. This study has been extended as far as possible with the available topography, but still does not tie in. We find this acceptable since the effective Zone A limits are grossly inaccurate.


The following information is submitted in support of the LOMR:

1. This letter requesting a LOMR
2. FEMA MT-2 Form 1 (2 pages)
3. FEMA MT-2 Form 2 (2 pages)
4. Current Fee Tables and Payment Information Form
5. General project location map
6. HEC-RAS profile and cross-section results
7. Effective FEMA FIRMs (Maps 04025C1720F and 04025C2085F, Date 6/6/2001)
8. Annotated FEMA FIRMs (Maps 04025C1720F and 04025C2085F, Date 6/6/2001)
9. Pictures of the site
10. CD containing HEC-RAS existing model
11. Certified topographic map with effective and existing floodplain boundaries

Please provide the LOMR to Centerpointe South Development, LLC and Lyon Engineering. If additional information is required, please contact Brian Bucholtz, E.I.T., CFM with Lyon Engineering at 928-776-1750 or bbucholtz@cableone.net.

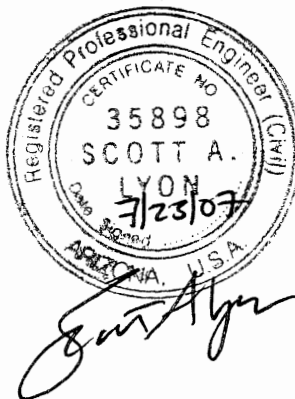
Respectfully submitted,


Ty Myers, Developer
Centerpointe South Development, LLC


Brian A. Bucholtz, E.I.T., CFM, Project Engineer
Lyon Engineering

Scott A. Lyon, P.E., R.L.S., Vice President
Lyon Engineering

Enclosures



YAVAPAI COUNTY
UNINCORPORATED AREAS
040093

CORPORATE LIMITS

ATCHISON

ZONE X

DRIVE

DRIVE

LENTZ DRIVE

DRIVE

GLASS

WINE

DRIVE

ERKINS

WILKINSON DRIVE

36

ZONE X

ZONE A

Annotated
New Existing
Floodplain

31

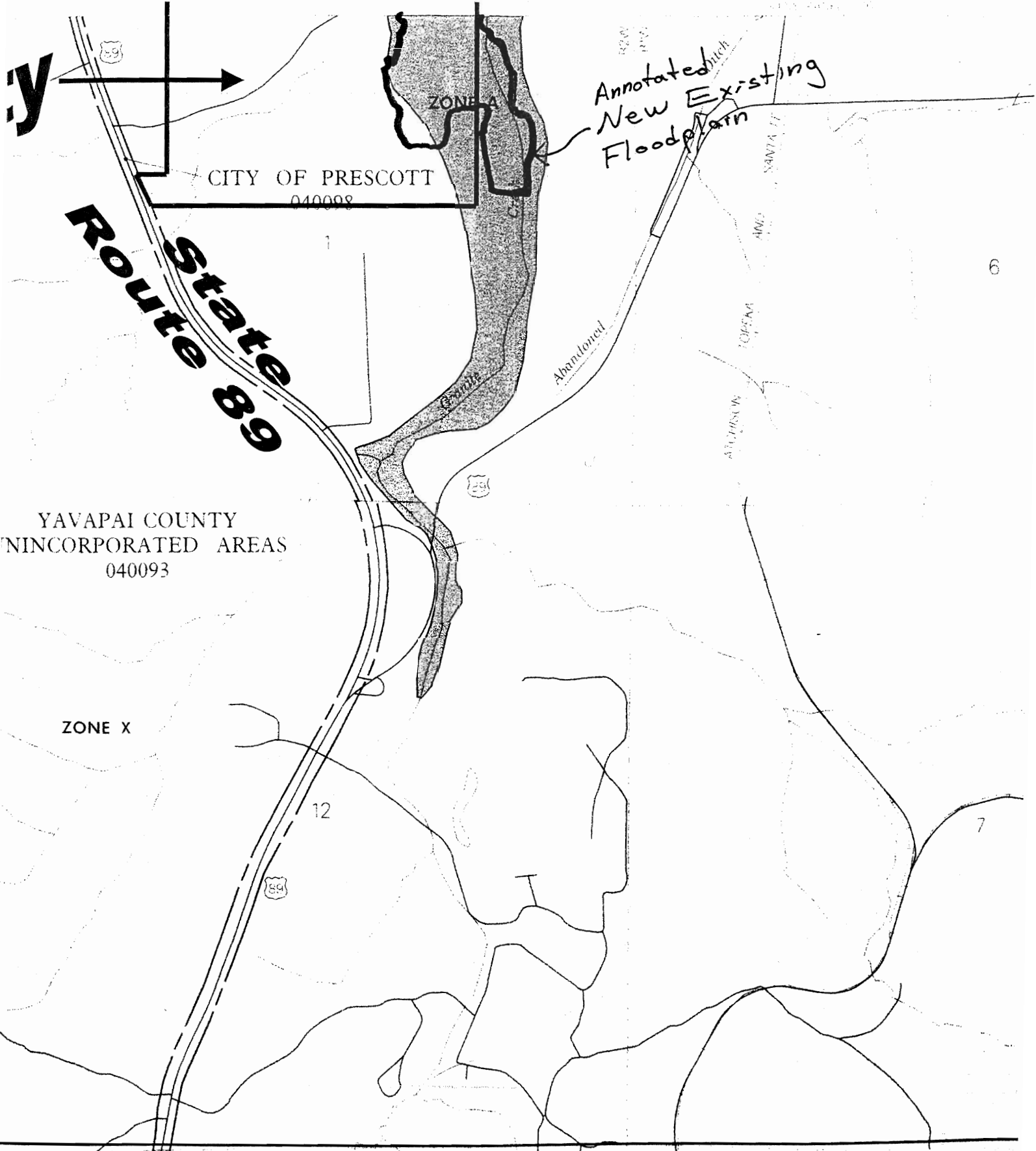
Dam

Abandoned Ditch

6

R2W
R1W

JOINS PANEL 2085



United States Department of Agriculture



Natural Resources Conservation Service
U.S. Courthouse – Federal Building
230 N. First Avenue, Suite 509
Phoenix, Arizona 85003-1733
(602) 280-8801

JAN 28 2008

The Louis Berger Group, Inc.
Attention: Bernardita Calinao, Ph.D.
2345 East Thomas Road, Suite 220
Phoenix, Arizona 85016-7818

Dear Ms. Calinao:

This is in response to your letter dated January 18, 2008, regarding the Master Plan for the Prescott Municipal Airport.

The USDA Natural Resources Conservation Service is responsible for coordinating the activities related to the Farmland Protection Policy Act (FPPA). The law requires NRCS to assist other agencies during their planning processes in making determinations of prime farmland. We also have responsibility to assist in analyzing project effects on agricultural wetlands.

In a letter dated October 29, 1996, we made a determination that your project was exempt from the requirements of the FPPA. We have taken another look at the project area defined in your letter and have made the determination that no prime farmland or agricultural wetlands exist within the proposed project area. Therefore, the project is still exempt from the FPPA and there is no need to coordinate your planning activities with NRCS.

If you have any further questions, please feel free to contact Steve Smarik at 602-280-8785 or steve.smarik@az.usda.gov.

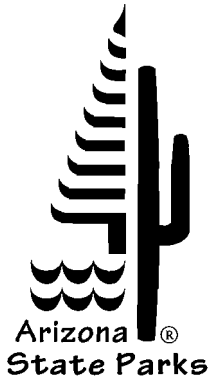
Sincerely,

A handwritten signature in black ink that reads "Eric B. Banks". The signature is written in a cursive, flowing style.

ERIC B. BANKS
Assistant State Conservationist (Financial Programs)

Helping People Help the Land

An Equal Opportunity Provider and Employer



February 15, 2008

Bernardita Calinao
Environmental Manager
The Louis Berger Group, Inc.
2345 East Thomas Road, Suite 220
Phoenix, AZ 85016-7818

RE: Environmental Assessment for Proposed Airport Development,
Prescott Municipal Airport Master Plan, Prescott, Arizona;
SHPO-2008-0107 (35308)

Janet Napolitano
Governor

**State Parks
Board Members**

Chair
William C. Cordasco
Flagstaff

Arlan Colton
Tucson

William C. Scalzo
Phoenix

Reese Woodling
Tucson

Tracey Westerhausen
Phoenix

William C. Porter
Kingman

Mark Winkleman
State Land
Commissioner

Kenneth E. Travous
Executive Director

Arizona State Parks
1300 W. Washington
Phoenix, AZ 85007

Tel & TTY: 602.542.4174
www.azstateparks.com

800.285.3703 from
(520 & 928) area codes

General Fax:
602.542.4180

Director's Office Fax:
602.542.4188

Dear Ms. Calinao:

Thank you for advising the State Historic Preservation Office (SHPO) regarding planning efforts involving the above project. We appreciate your cooperation with this office in considering the impacts of federal development on cultural resources situated in Arizona. We recommend a qualified cultural resources specialist inspect the project area to determine the presence or absence of historic properties (i.e., any prehistoric or historic district, site, building, structure, traditional cultural place, or object included in, or eligible for inclusion in the National or State Registers of Historic Places).

According to our records [and as stated in the SHPO letter dated November 14, 1996, referred in your letter], the area of the Prescott Municipal Airport has not been systematically surveyed. If the preparation and implementation of this master plan require approval from the Federal Aviation Administration, then this project should be considered a federal undertaking and should be reviewed pursuant to Section 106 of the National Historic Preservation Act as implemented by 36 CFR Part 800.

If you have any questions or comments, please contact me at (602) 542-7140 or electronically via djacobs@azstateparks.gov.

Sincerely,

David Jacobs
Compliance Specialist/Archaeologist
State Historic Preservation Office



United States Department of the Interior

U.S. Fish and Wildlife Service
Arizona Ecological Services Field Office
2321 West Royal Palm Road, Suite 103
Phoenix, Arizona 85021-4951

Telephone: (602) 242-0210 Fax: (602) 242-2513



In Reply Refer to:

AESO/SE
22410-2008-TA-0191

February 28, 2008

Ms. Bernardita Calinao, Ph.D.
Environmental Manager
The Louis Berger Group, Inc.
2345 East Thomas Road, Suite 220
Phoenix, Arizona 85016

Dear Ms. Calinao:

Thank you for your January 18, 2008, correspondence, requesting our review of the Master Plan for the Prescott Municipal Airport project in Prescott, Arizona, in compliance with section 7 of the Endangered Species Act of 1973 (ESA) as amended (16 U.S.C. 1531 et seq.).

You are requesting that we provide you with any available information regarding rare, endangered, and threatened species at the Prescott Municipal Airport and its immediate general vicinity. Based on the information that you have provided, the Fish and Wildlife Service believes that no endangered or threatened species or critical habitat will be affected by this project; nor is this project likely to jeopardize the continued existence of any proposed species or adversely modify any proposed critical habitat. No further review is required for this project at this time. Should project plans change or if additional information on the distribution of listed or proposed species becomes available, this determination may need to be reconsidered.

We appreciate your coordination with us on this matter. We also encourage you to coordinate the review of these projects with the Arizona Game and Fish Department. Should you require further assistance or if you have any questions, please contact Brian J. Wooldridge (x105) or Brenda Smith (x101) of our Flagstaff Suboffice at (928) 226-0614.

Sincerely,

for Steven L. Spangle
Field Supervisor

cc: Chief Habitat Branch, Arizona Game and Fish Department, Phoenix, AZ