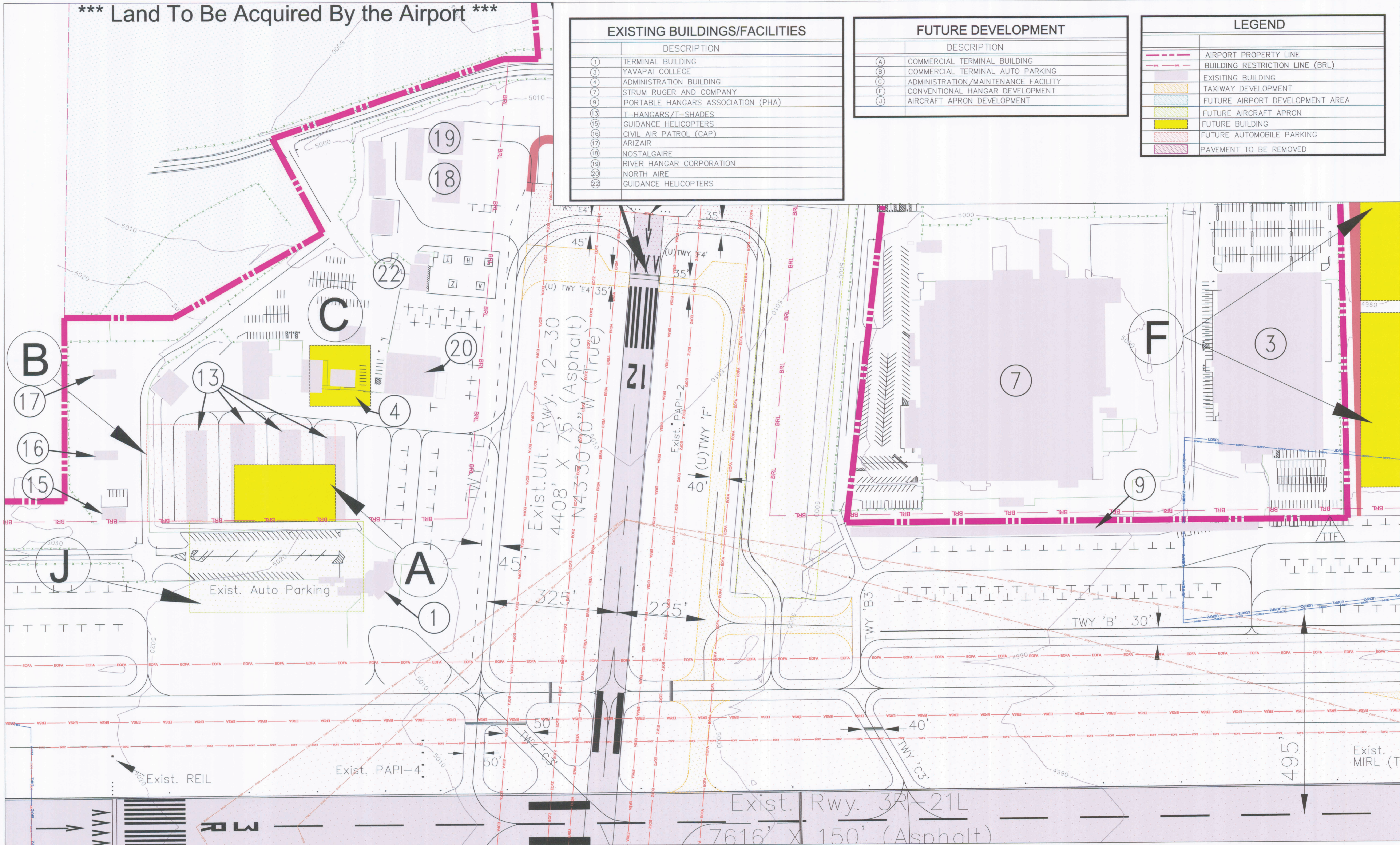


*** Land To Be Acquired By the Airport ***

EXISTING BUILDINGS/FACILITIES	
	DESCRIPTION
(1)	TERMINAL BUILDING
(3)	YAVAPAI COLLEGE
(4)	ADMINISTRATION BUILDING
(7)	STRUM RUGER AND COMPANY
(9)	PORTABLE HANGARS ASSOCIATION (PHA)
(13)	T-HANGARS/T-SHADES
(15)	GUIDANCE HELICOPTERS
(16)	CIVIL AIR PATROL (CAP)
(17)	ARIZAIR
(18)	NOSTALGAIRE
(19)	RIVER HANGAR CORPORATION
(20)	NORTH AIRE
(22)	GUIDANCE HELICOPTERS

FUTURE DEVELOPMENT	
	DESCRIPTION
(A)	COMMERCIAL TERMINAL BUILDING
(B)	COMMERCIAL TERMINAL AUTO PARKING
(C)	ADMINISTRATION/MAINTENANCE FACILITY
(F)	CONVENTIONAL HANGAR DEVELOPMENT
(J)	AIRCRAFT APRON DEVELOPMENT

LEGEND	
	AIRPORT PROPERTY LINE
	BUILDING RESTRICTION LINE (BRL)
	EXISTING BUILDING
	TAXIWAY DEVELOPMENT
	FUTURE AIRPORT DEVELOPMENT AREA
	FUTURE AIRCRAFT APRON
	FUTURE BUILDING
	FUTURE AUTOMOBILE PARKING
	PAVEMENT TO BE REMOVED



PRESCOTT MUNICIPAL AIRPORT
 ERNEST A. LOVE FIELD (PRC)
 Prescott, Arizona
 Owner: CITY OF PRESCOTT
 201 SOUTH CORTEZ STREET
 PRESCOTT, AZ 86301
 Phone 928-777-1114
 Manager: BENJAMIN D. VARDIMAN
 6546 CRYSTAL LANE
 PRESCOTT, AZ 86301
 Phone 928-777-1114

Magnetic Declination: 11°36' E (June 2008)
 Annual Variation: 0°1' W
 (Source: National Geophysical Data Center)

Graphical scale in feet
 0 50 100 200

TERMINAL AREA PLAN

Funding Acknowledgement
 The preparation of this document was financed in part through a grant from the Federal Aviation Administration as provided under Section 105 of the Airport and Airway Improvement Act of 1962, as amended by the Airport and Airway Safety and Expansion Act of 1987. The contents do not necessarily reflect the official views or policy of the FAA. Acceptance of this report by the FAA does not in any way constitute a commitment on the part of the United States to participate in any development depicted therein nor does it indicate that the proposed development is environmentally in accordance with appropriate public laws.

Designed by: NS
 Drawn by: NS
 Checked by: MC
 August 2010
 Sheet 6 of 8

THE Louis Berger Group, Inc.
 2345 E. THOMAS ROAD
 SUITE 220 - PHOENIX, AZ 85016
 TEL 602-234-1124 FAX 602-241-1561
 WWW.LOUIBERGER.COM

AVIATION SERVICES HEADQUARTERS
 20 CORPORATE WOODS BLVD
 ALBANY, NY 12211
 TEL 518-432-9545 FAX 518-432-9571
 WWW.LOUIBERGER.COM