

Chapter Five
Airport Plans



Colorado City Municipal Airport
Airport Master Plan

COLORADO CITY MUNICIPAL AIRPORT

COLORADO CITY, ARIZONA

AIRPORT LAYOUT PLANS

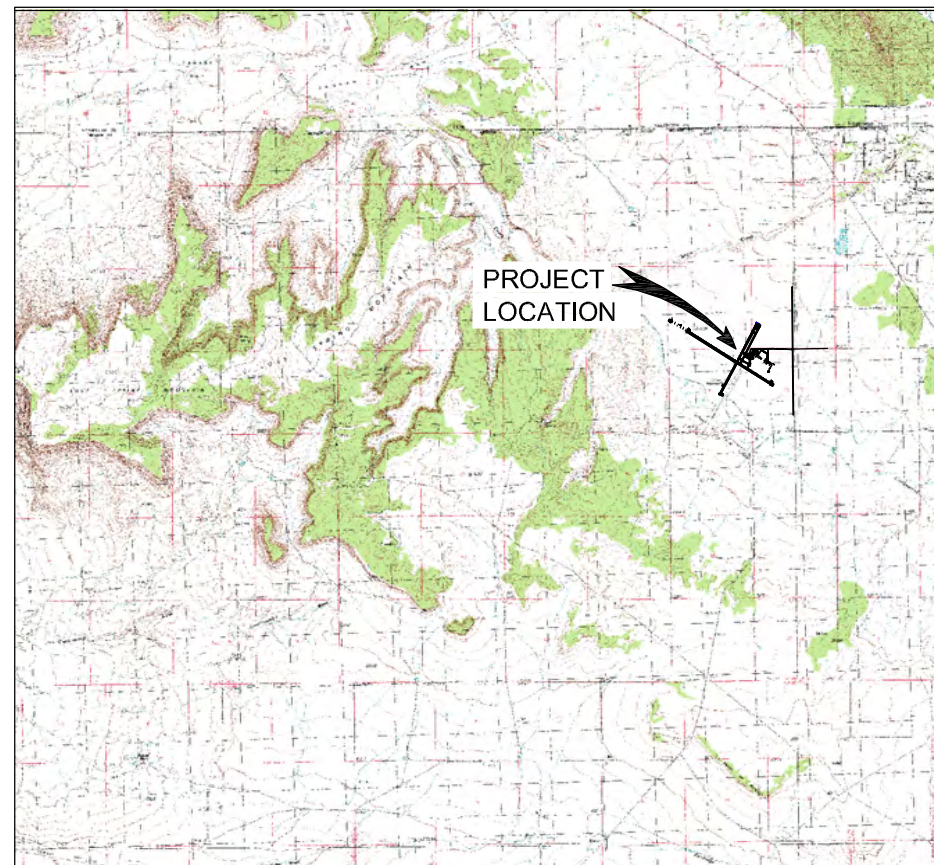
PREPARED BY:

ARMSTRONG CONSULTANTS, INC.

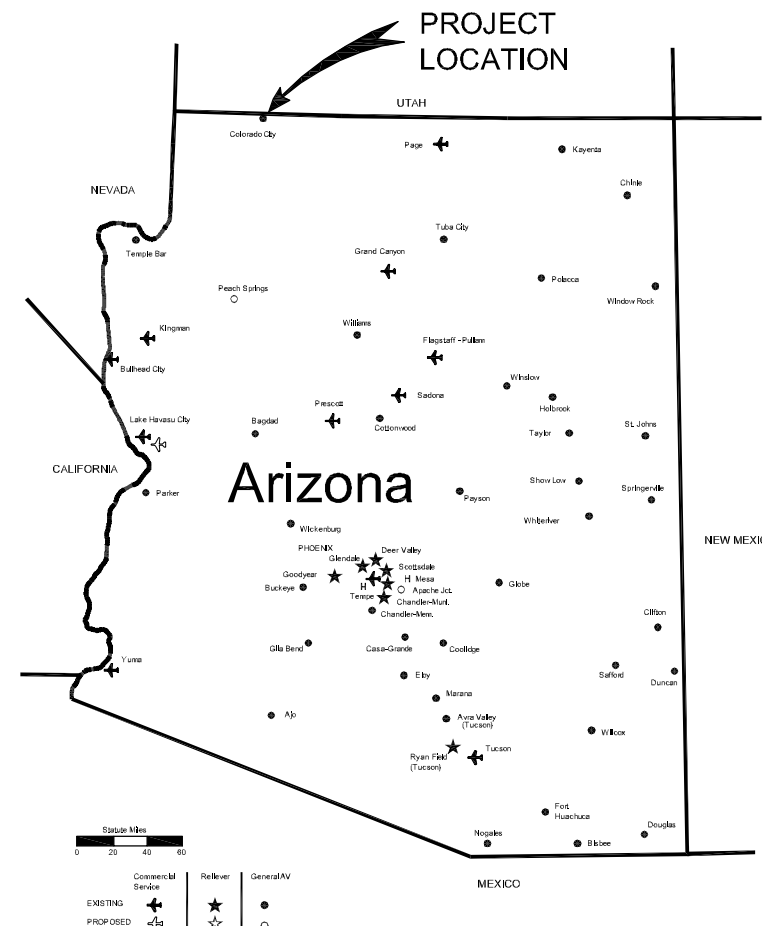
A.I.P. NO. 3-04-0076-12

A.C.I. PROJECT NO. 075831

DATE: DECEMBER 15, 2008



VICINITY MAP



INDEX TO SHEETS

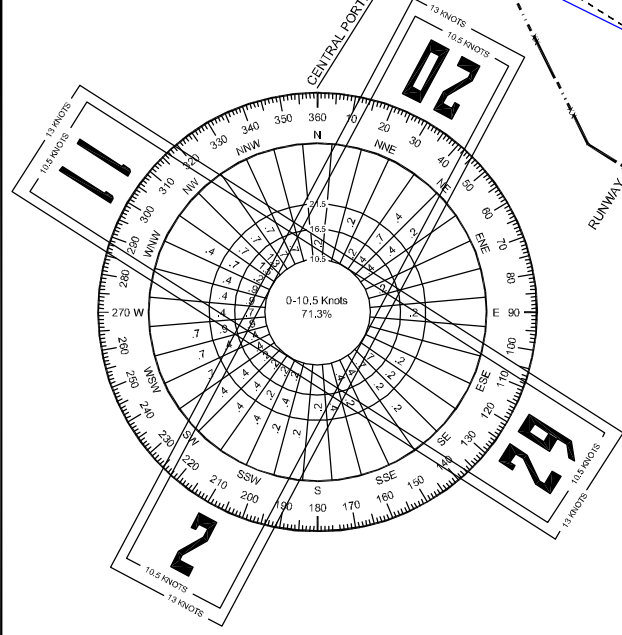
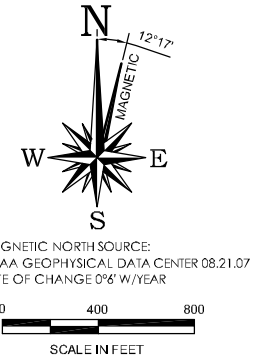
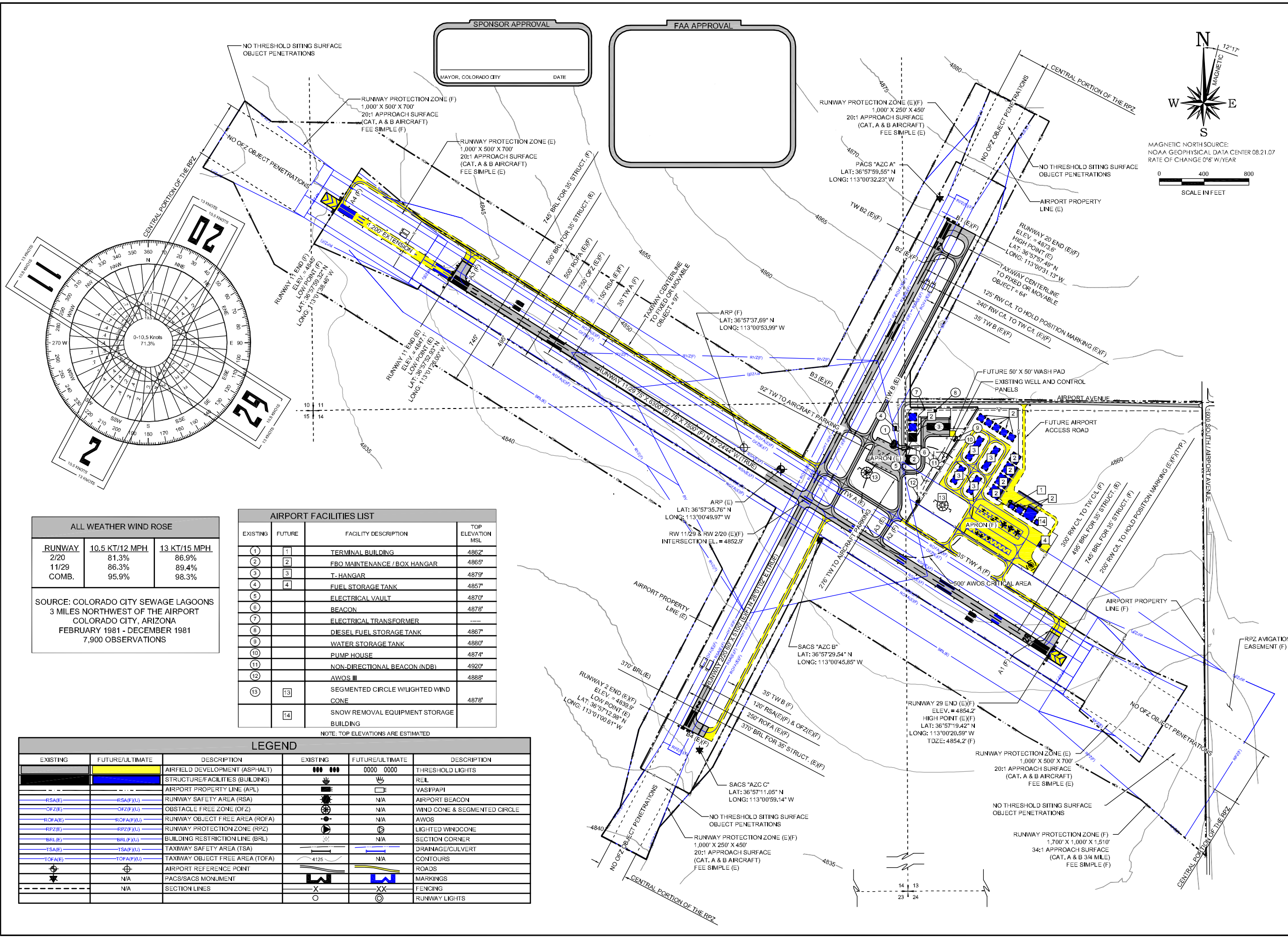
COVER SHEET	1
AIRPORT LAYOUT PLAN	2
DATA SHEET	3
TERMINAL AREA DRAWING	4
PART "77" AIRSPACE DRAWING	5
PART "77" AIRSPACE PROFILES	6
RUNWAY 11/29 INNER APPROACH (E)	7
RUNWAY 11/29 INNER APPROACH (F)	8
RUNWAY 2/20 INNER APPROACH (E)(F)	9
ON AIRPORT LAND USE	10
OFF AIRPORT LAND USE	11
EXHIBIT "A" PROPERTY MAP	12
AERIAL PHOTO	13

(E = EXISTING, F = FUTURE)

 **ARMSTRONG CONSULTANTS, Inc.**
airport engineering and planning services

861 Rood Avenue
Grand Junction, CO 81501
ph: 970.242.0101 fax: 970.241.1769

www.armstrongconsultants.com



ALL WEATHER WIND ROSE		
RUNWAY	10.5 KT/12 MPH	13 KT/15 MPH
2/20	81.3%	86.9%
11/29	86.3%	89.4%
COMB.	95.9%	98.3%

SOURCE: COLORADO CITY SEWAGE LAGOONS
3 MILES NORTHWEST OF THE AIRPORT
COLORADO CITY, ARIZONA
FEBRUARY 1981 - DECEMBER 1981
7,900 OBSERVATIONS

AIRPORT FACILITIES LIST			
EXISTING	FUTURE	FACILITY DESCRIPTION	TOP ELEVATION MSL
(1)	[1]	TERMINAL BUILDING	4862'
(2)	[2]	FBO MAINTENANCE / BOX HANGAR	4865'
(3)	[3]	T-HANGAR	4879'
(4)	[4]	FUEL STORAGE TANK	4857'
(5)		ELECTRICAL VAULT	4870'
(6)		BEACON	4878'
(7)		ELECTRICAL TRANSFORMER	---
(8)		DIESEL FUEL STORAGE TANK	4867'
(9)		WATER STORAGE TANK	4880'
(10)		PUMP HOUSE	4874'
(11)		NON-DIRECTIONAL BEACON (NDB)	4920'
(12)		AWOS III	4888'
(13)	[13]	SEGMENTED CIRCLE W/LIGHTED WIND CONE	4878'
	[14]	SNOW REMOVAL EQUIPMENT STORAGE BUILDING	

NOTE: TOP ELEVATIONS ARE ESTIMATED

LEGEND					
EXISTING	FUTURE/ULTIMATE	DESCRIPTION	EXISTING	FUTURE/ULTIMATE	DESCRIPTION
		AIRFIELD DEVELOPMENT (ASPHALT)	000 000	0000 0000	THRESHOLD LIGHTS
		STRUCTURE/FACILITIES (BUILDING)	■	■	REL
		AIRPORT PROPERTY LINE (APL)	—	—	VAS/PAPI
		RUNWAY SAFETY AREA (RSA)	■	■	AIRPORT BEACON
		OBSTACLE FREE ZONE (OFZ)	■	■	WIND CONE & SEGMENTED CIRCLE
		RUNWAY OBJECT FREE AREA (ROFA)	■	■	AWOS
		RUNWAY PROTECTION ZONE (RPZ)	■	■	LIGHTED WINDCONE
		BUILDING RESTRICTION LINE (BRL)	■	■	SECTION CORNER
		TAXIWAY SAFETY AREA (TSA)	■	■	DRAINAGE/CULVERT
		TAXIWAY OBJECT FREE AREA (TOFA)	■	■	CONTOURS
		AIRPORT REFERENCE POINT	⊕	⊕	ROADS
		PACS/SACS MONUMENT	⊕	⊕	MARKINGS
		SECTION LINES	—	—	FENCING
			○	○	RUNWAY LIGHTS

ARMSTRONG CONSULTANTS, Inc.
airport engineering and planning services

861 Rood Avenue
Grand Junction, CO 81501
ph: 970.242.0101 fax: 970.241.1769

www.armstrongconsultants.com

COLORADO CITY MUNICIPAL AIRPORT
COLORADO CITY, ARIZONA

AIRPORT LAYOUT PLANS

No.	Revision	Date	By
1	REVISED ACI (07/5587)	7.04	KLA
2	REVISED ACI (07/5587)	9.05	RF

Project No: 075831
Date: 12.15.08
File Name: 5831502

Drawn: GWK
Checked: JZP
Approved: DAC

AIRPORT LAYOUT PLAN

Sheet: 2 of 13

RUNWAY DATA				
	RUNWAY 11/29	RUNWAY 11/29	RUNWAY 2/20	RUNWAY 2/20
ITEM	EXISTING	FUTURE	EXISTING	FUTURE
APPROACH VIS. MIN./TYPE APPROACH VIS. MIN./TYPE	RW 11 NP, 1 - MILE UTILITY RW 29 NP, 1 - MILE UTILITY	RW 11 NP, 1 - MILE >UTILITY RW 29 APV, 3/4 - MILE >UTILITY	RW 2 VISUAL, UTILITY RW 20 VISUAL, UTILITY	RW 2 VISUAL, UTILITY RW 20 VISUAL, UTILITY
FAR PART 77 APPROACH SLOPE	RW 11 20:1 RW 29 20:1	RW 11 20:1 RW 29 34:1	RW 2 20:1 RW 20 20:1	RW 2 20:1 RW 20 20:1
RUNWAY LENGTH	6,300'	7,500'	5,100'	5,100'
RUNWAY WIDTH	75'	75'	60'	60'
RUNWAY & TAXIWAY PAVEMENT	ASPHALT	ASPHALT	ASPHALT	ASPHALT
PAVEMENT STRENGTH (LBS)	12,000 SWG	45,000 SWG 68,000 DWG	12,500 SWG	12,500 SWG
RUNWAY LIGHTING	MIRL	MIRL	MIRL	MIRL
RUNWAY MARKING	RW 11 NP RW 29 NP	RW 11 NP RW 29 PRECISION	RW 2 NP RW 20 NP	RW 2 NP RW 20 NP
% EFFECTIVE GRADIENT	0.11%	0.11%	0.66%	0.66%
% MAXIMUM GRADE	0.11%	0.18%	0.81%	0.81%
LINE OF SIGHT REQUIREMENTS MET	YES	YES	YES	YES
% WIND COVERAGE 12 MPH/10.5 KNOTS 15 MPH/13.0 KNOTS 18 MPH/16.0 KNOTS	86.3% 89.4% ---	86.3% 89.4% ---	81.3% 86.9% ---	81.3% 86.9% ---
VISUAL APPROACH AIDS	RW 11: PAPI-2, REIL RW 29: PAPI-2, REIL	RW 11: PAPI-2, REIL RW 29: PAPI-2, REIL	RW 2: NONE RW 20: NONE	RW 2: PAPI-2, REIL RW 20: PAPI-2, REIL
NAVAIDS	GPS, NDB	GPS, NDB	NONE	NONE
DESIGN AIRCRAFT WINGSPAN APPROACH SPEED MGTO UNDERCARRIAGE WIDTH TAIL HEIGHT	KING AIR B-200 54.5' 103 kts. 12,500 lbs. 13' 15'	FALCON 900 63.4' 100 kts. 45,500 lbs. 13' 24.8'	CESSNA 172 35.1' 65 kts. 2,300 lbs. 7'2" 27'	CESSNA 172 35.1' 65 kts. 2,300 lbs. 7'2" 27'
AIRPORT REFERENCE CODE	B-II	B-II	B-I (SMALL AIRCRAFT ONLY)	B-I (SMALL AIRCRAFT ONLY)
RUNWAY SAFETY AREA (RSA) WIDTH LENGTH BEYOND RWY END	150' 300'	150' 300'	120' 240'	120' 240'
RUNWAY OBJECT FREE AREA (ROFA) WIDTH LENGTH BEYOND RWY END	500' 300'	500' 300'	250' 240'	250' 240'
OBSTACLE FREE ZONE (OFZ) WIDTH LENGTH BEYOND RWY END	400' 200'	400' 200'	120' 200'	120' 200'
	NO OFZ OBJECT PENETRATIONS		NO OFZ OBJECT PENETRATIONS	
RUNWAY ELEVATIONS (NAVD88)	RW 11 4,847.1'	RW 29 4,854.2'	RW 11 4,845.0'	RW 29 4,854.2'
RUNWAY END HIGH POINT	4,847.1'	4,854.2'	4,839.9'	4,873.6'
RUNWAY END LOW POINT	4,847.1'	4,845.0'	4,839.9'	4,873.6'
TDZE	N/A	4,854.2'	N/A	4,839.9'
RUNWAY INTERSECTION ELEV.	4,852.9'	4,852.9'	4,852.9'	4,852.9'
RUNWAY CENTERLINE TO HOLD BARS & SIGNS	200' (300' ACTUAL)	200' (300' ACTUAL)	125' (240' ACTUAL)	125' (240' ACTUAL)
RUNWAY CENTERLINE TO PARALLEL TAXIWAY CENTERLINE	240'	240'	150'	150'
TAXIWAY OFA WIDTH	131'	131'	89'	89'
TAXIWAY SAFETY AREA WIDTH	79'	79'	49'	49'
TAXIWAY WINGTIP CLEARANCE	26'	26'	20'	20'
TAXIWAY CENTERLINE TO FIXED OR MOVABLE OBJECT	83'	83'	44.5'	44.5'
TAXIWAY WIDTH	35'	35'	25' (35' ACTUAL)	25' (35' ACTUAL)
RUNWAY PROTECTION ZONE (RPZ)	RW 11 (1,000' X 500' X 700') RW 29 (1,000' X 500' X 700')	RW 11 (1,000' X 500' X 700') RW 29 (1,000' X 1,500' X 1,700')	RW 2 (1,000' X 250' X 450') RW 20 (1,000' X 250' X 450')	RW 2 (1,000' X 250' X 450') RW 20 (1,000' X 250' X 450')

AIRPORT DATA		
ITEM	EXISTING	FUTURE
AIRPORT ELEVATION (MSL) (NAVD88)	4873.6'	4873.6'
AIRPORT REFERENCE POINT (NAD '83)	LATITUDE 36°57'35.76" N LONGITUDE 113°00'49.97" W	LATITUDE 36°57'37.69" N LONGITUDE 113°00'53.99" W
NAVAIDS	NDB, GPS	NDB, GPS (WAAS)
MEAN MAXIMUM TEMPERATURE HOTTEST MONTH	90.1°F (JULY)	90.1°F (JULY)
COMBINED WIND COVERAGE 12 MPH/10.5 KNOTS 15 MPH/13.0 KNOTS 18 MPH/16.0 KNOTS		95.90% 98.30% ----
MAGNETIC VARIATION & DATE	12°17' E CHANGING BY 0°6' W/YEAR	
AIRPORT REFERENCE CODE	B-II	B-II
NPIAS SERVICE LEVEL	GA	GA
TAXIWAY LIGHTING	RETRO-REFLECTORS	MITL
TAXIWAY MARKING	CENTERLINE	CENTERLINE
GPS AT AIRPORT	YES	YES

RUNWAY END COORDINATES (NAD 83)			
	RUNWAY	EXISTING	FUTURE
RW 11	LATITUDE: LONGITUDE:	36°57'52.93" N 113°01'26.00" W	36°57'59.32" N 113°01'38.46" W
RW 29	LATITUDE: LONGITUDE:	36°57'19.42" N 113°00'20.59" W	36°57'19.42" N 113°00'20.59" W
RW 2	LATITUDE: LONGITUDE:	36°57'12.98" N 113°01'00.61" W	36°57'12.98" N 113°01'00.61" W
RW 20	LATITUDE: LONGITUDE:	36°57'57.49" N 113°00'31.13" W	36°57'57.49" N 113°00'31.13" W

NOTES	
RUNWAY END COORDINATES AND ELEVATIONS WERE TAKEN FROM THE FAA AVN DATA SHEETS.	
NO THRESHOLD SITING SURFACE OBJECT PENETRATIONS	
NO OFZ OBJECT PENETRATIONS	
<p>PACS MONUMENT AZC A IS THE TOP CENTER OF A STAINLESS STEEL ROD DRIVEN TO REFUSAL AT A DEPTH OF 20.60 M (67.59 FT) RECESSED 12 CM BELOW GROUND LEVEL IN A 2.5 CM DIA. GREASE FILLED FINNED PLASTIC SLEEVE 90 CM LONG ENCASED IN A 12.7 CM DIA. PVC PIPE WITH NGS LOGO CAP SURROUNDED BY CONCRETE. THE LOGO CAP AND CONCRETE ARE SET FLUSH WITH THE GROUND.</p>	
<p>SACS MONUMENT AZC B IS THE CENTER OF A 5 CM SURVEY DISK SET INTO THE TOP OF A 1.0 M (3.3 FT.) LONG FENO PIPE, RECESSED 11 CM BELOW GROUND LEVEL AND ENCASED IN A 12.7 CM DIA. PVC PIPE WITH NGS LOGO CAP SURROUNDED BY CONCRETE. THE LOGO CAP AND CONCRETE ARE SET FLUSH THE GROUND. THREE CIRCULAR ANCHOR PRONES EXTEND FROM THE BOTTOM OF THE PIPE.</p>	
<p>SACS MONUMENT AZC C IS THE CENTER OF A 5 CM SURVEY DISK SET INTO THE TOP OF A 1.0 M (3.3 FT.) LONG FENO PIPE, RECESSED 11 CM BELOW GROUND LEVEL AND ENCASED IN A 12.7 CM DIA. PVC PIPE WITH NGS LOGO CAP SURROUNDED BY CONCRETE. THE LOGO CAP AND CONCRETE ARE SET FLUSH THE GROUND. THREE CIRCULAR ANCHOR PRONES EXTEND FROM THE BOTTOM OF THE PIPE.</p>	
<p>RVZ TERMINAL BUILDING AND APRON TO BE REMOVED AT END OF USEFUL LIFE.</p>	

No.	Revision	Date	By

Project No: 075831
Date: 12.15.08
File Name: 5831502

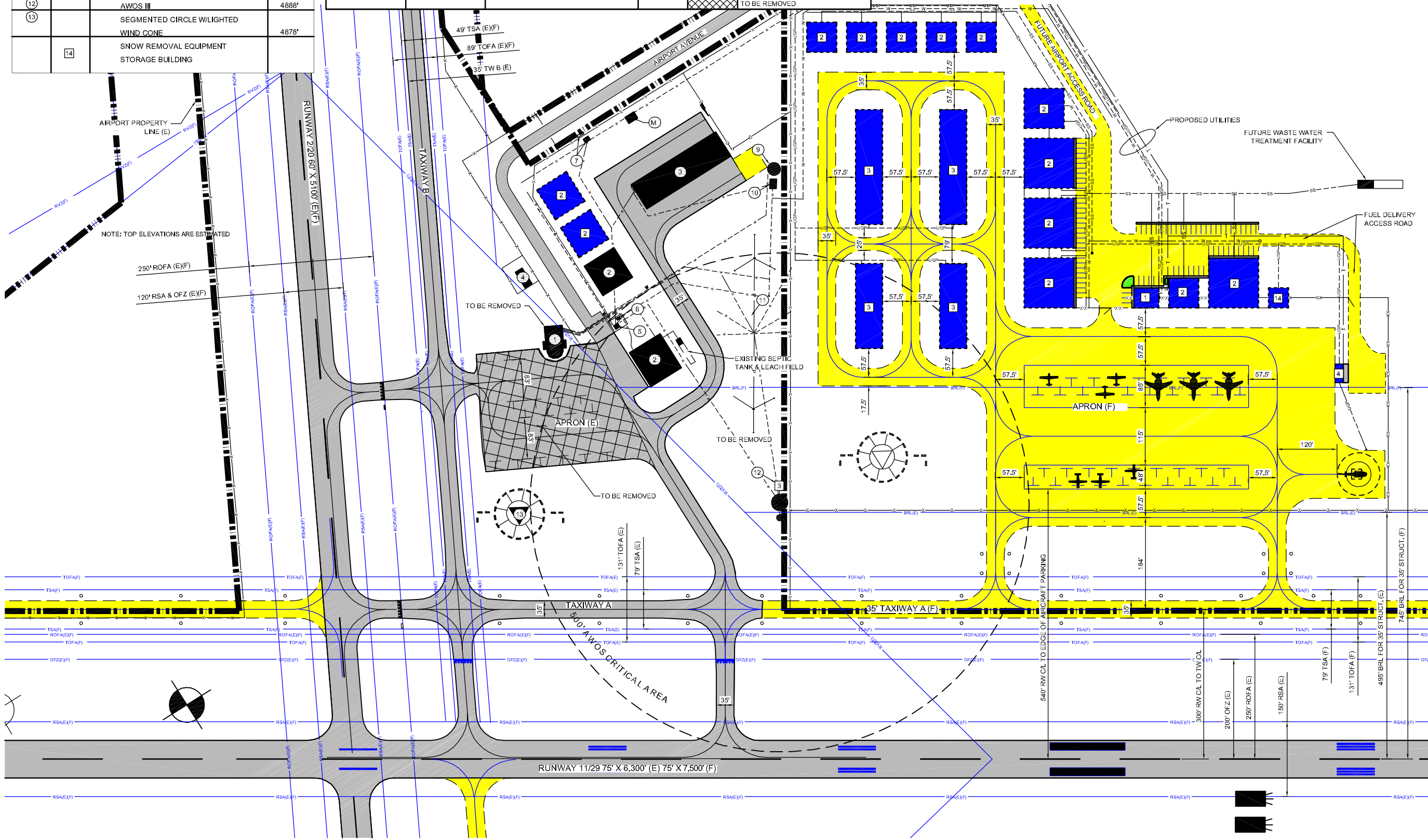
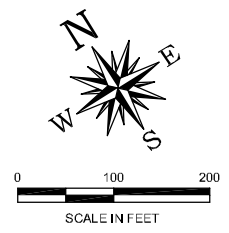
Drawn: GWK
Checked: JZP
Approved: DAC

AIRPORT
DATA
SHEET

AIRPORT FACILITIES LIST			
EXISTING	FUTURE	FACILITY DESCRIPTION	TOP ELEVATION
1	1	TERMINAL BUILDING	4862'
2	2	FBO MAINTANCE / BOX HANGAR	4865'
3	3	T- HANGAR	4879'
4	4	FUEL STORAGE TANK	4857'
5		ELECTRICAL VAULT	4870'
6		BEACON	4878'
7		ELECTRICAL TRANSFORMER	---
8		DIESEL FUEL STORAGE TANK	4867'
9		WATER STORAGE TANK	4880'
10		PUMP HOUSE	4874'
11		NON-DIRECTIONAL BEACON (NDB)	4920'
12		AWOS III	4888'
13		SEGMENTED CIRCLE W/LIGHTED WIND CONE	4878'
	14	SNOW REMOVAL EQUIPMENT STORAGE BUILDING	

LEGEND					
EXISTING	FUTURE/ULTIMATE	DESCRIPTION	EXISTING	FUTURE	DESCRIPTION
		AIRFIELD DEVELOPMENT (ASPHALT)	000 000	0000 0000	THRESHOLD LIGHTS
		STRUCTURE/FACILITIES (BUILDING)	■	□	REL
		AIRPORT PROPERTY LINE (APL)	—	—	VASI/PAPI
RSA(E)	RSA(F)	RUNWAY SAFETY AREA (RSA)	⊕	⊕	AIRPORT REFERENCE POINT (ARP)
OFZ(E)	OFZ(F)	OBSTACLE FREE ZONE (OFZ)	⊙	⊙	AIRPORT BEACON
ROFA(E)	ROFA(F)	RUNWAY OBJECT FREE AREA (ROFA)	⊗	⊗	WIND CONE & SEGMENTED CIRCLE
RPZ(E)	RPZ(F)	RUNWAY PROTECTION ZONE (RPZ)	⊘	N/A	SECTION CORNER
RVZ(E)	RVZ(F)	RUNWAY VISIBILITY ZONE (RVZ)	⊙	⊙	AWOS
BRL(E)	BRL(F)	BUILDING RESTRICTION LINE (BRL)	—	—	DRAINAGE/ CULVERT
TS(A)	TS(F)	TAXIWAY SAFETY AREA (TSA)	4125	N/A	CONTOURS
TOFA(E)	TOFA(F)	TAXIWAY OBJECT FREE AREA (TOFA)	—	—	ROADS
—	—	FENCING	—	—	MARKINGS
			—	—	TO BE REMOVED

UTILITIES LEGEND		
EXISTING	FUTURE/ULTIMATE	DESCRIPTION
—	—	AIRPORT POWER
—	—	AIRPORT WATER
—	—	SANITARY SEWER / WASTE WATER



NOTE: TOP ELEVATIONS ARE ESTIMATED

ARMSTRONG CONSULTANTS, Inc.
airport engineering and planning services

861 Rood Avenue
Grand Junction, CO 81501
ph: 970.242.0101 fax: 970.241.1769

www.armstrongconsultants.com

COLORADO CITY MUNICIPAL AIRPORT
COLORADO CITY, ARIZONA

AIRPORT LAYOUT PLANS

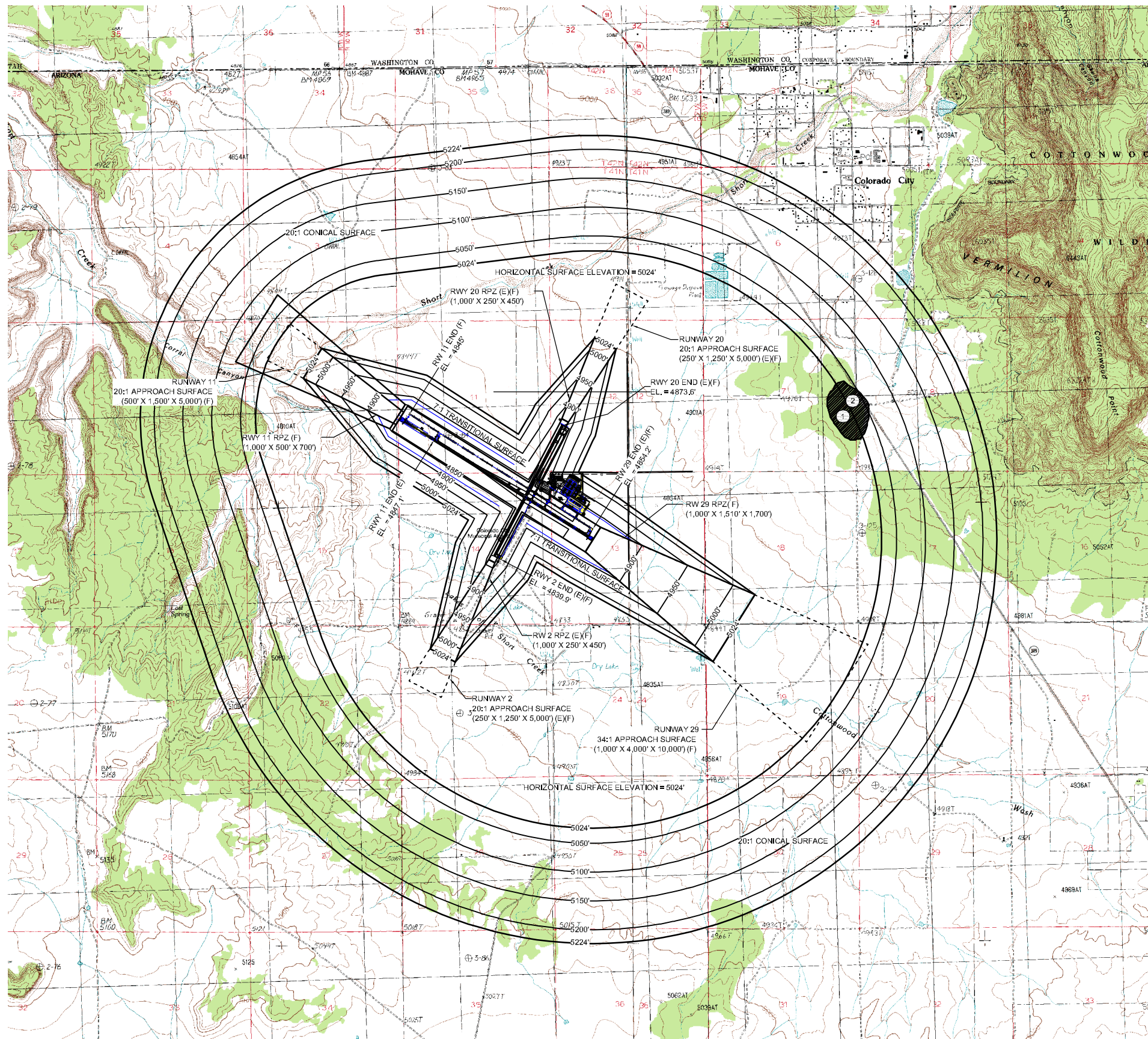
No.	Revision	Date	By

Project No: 075831
Date: 12,15,08
File Name: 5831503

Drawn: GWK
Checked: JZP
Approved: DAC

TERMINAL AREA PLAN (E)

Sheet: 4 of 13



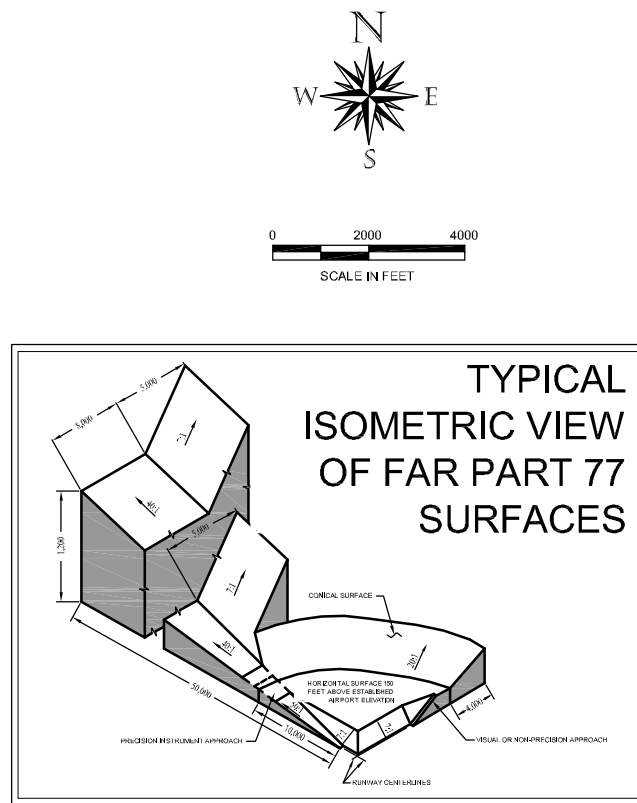
OBSTRUCTION CHART				
SURFACE	DESCRIPTION	TOP ELEVATION	PENETRATION	REMARKS
PRIMARY	NONE	--	--	NONE
TRANSITIONAL	NONE	--	--	NONE
HORIZONTAL	① TERRAIN	5100'	76'	NONE
CONICAL	② TERRAIN	5100'	70'	NONE
DEPARTURE SURFACE	NONE	--	--	NONE
THRESHOLD SITING SURFACE	NONE	--	--	NONE

NOTES

a) HEIGHT RESTRICTION ZONING IS CURRENTLY IN EFFECT

b) REFER TO "INNER PORTION OF THE APPROACH SURFACE" DRAWING FOR DETAILS ON ANY CLOSE-IN APPROACH OBSTRUCTIONS.

c) APPROACH SURFACES BASED ON ULTIMATE CONDITION



ARMSTRONG CONSULTANTS, Inc.
airport engineering and planning services



861 Rood Avenue
Grand Junction, CO 81501
ph: 970.242.0101 fax: 970.241.1769

COLORADO CITY MUNICIPAL AIRPORT
COLORADO CITY, ARIZONA

AIRPORT LAYOUT PLANS

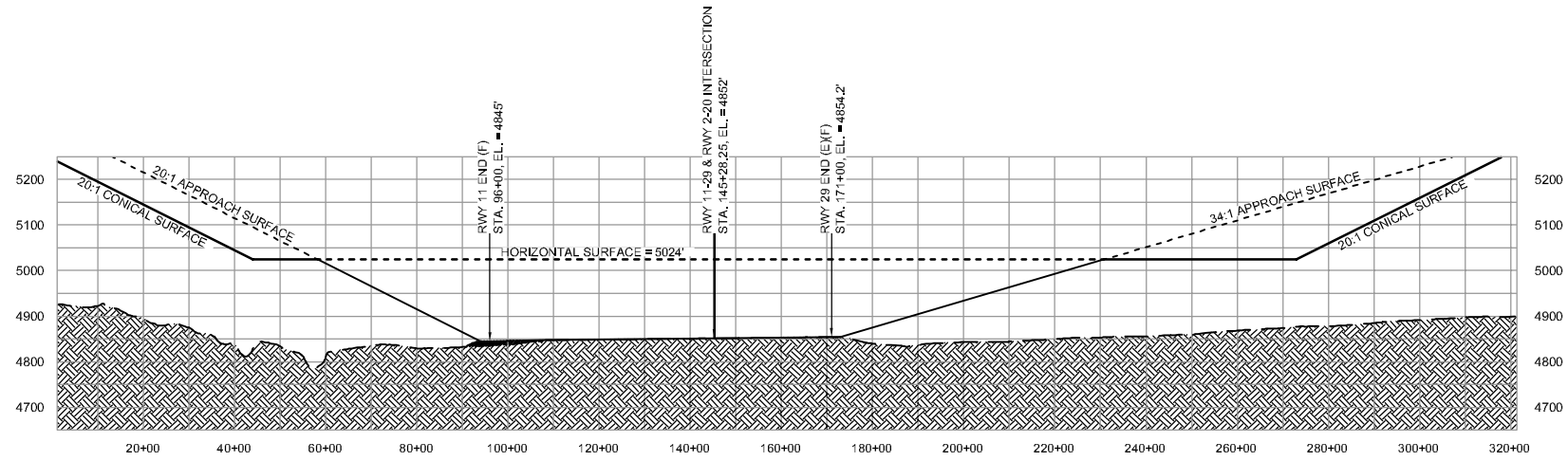
No.	Revision	Date	By

Project No: 075831
Date: 12.15.08
File Name: 5831504

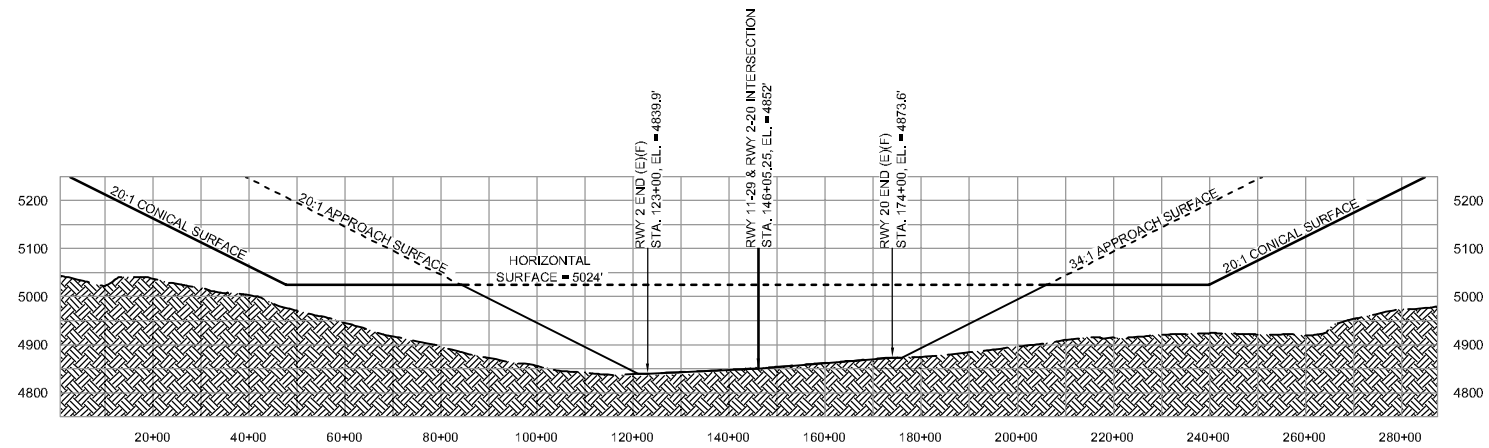
Drawn: GWK
Checked: JZP
Approved: DAC

PART "77"
AIRSPACE
DRAWING

Sheet: 5 of 13



RWY 11/29 FUTURE
SCALE: PER GRID



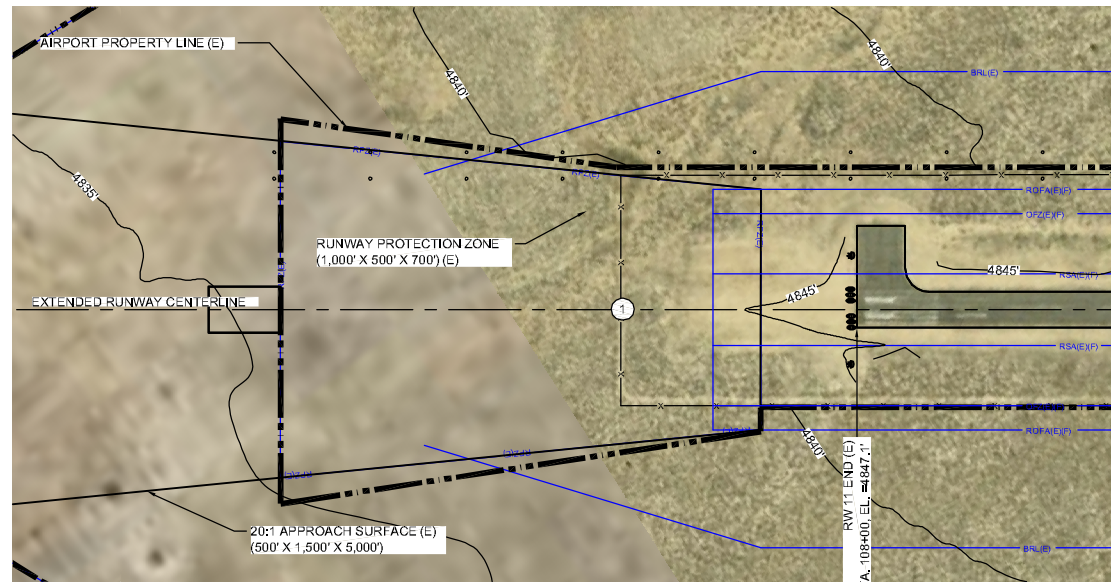
RWY 2/20 FUTURE
SCALE: PER GRID

No.	Revision	Date	By

Project No: 075831
Date: 12,15,08
File Name: 5831504

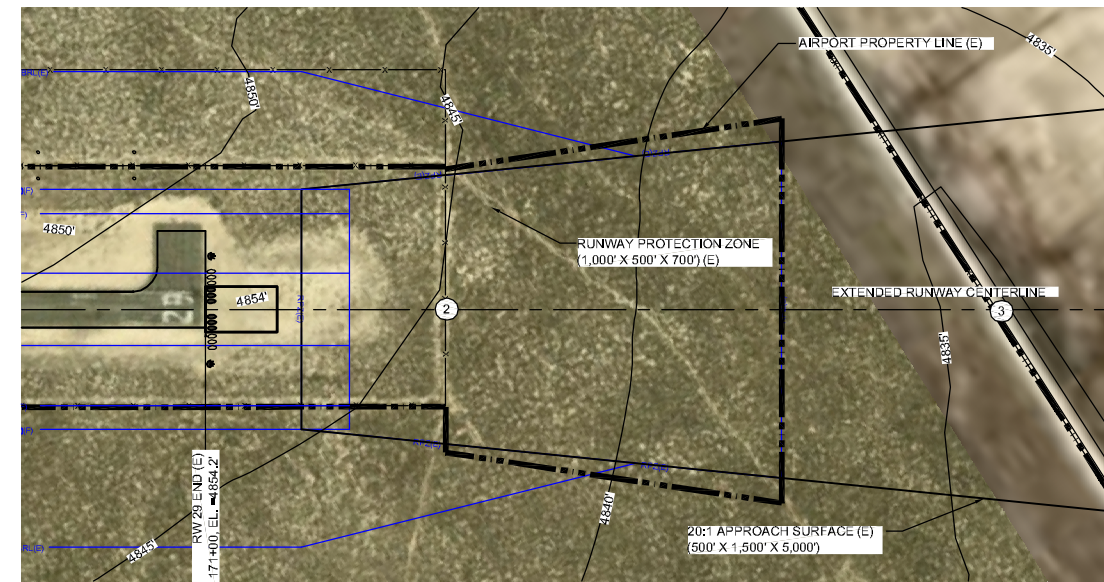
Drawn: GWK
Checked: JZP
Approved: DAC

PART "77"
AIRSPACE
DRAWING



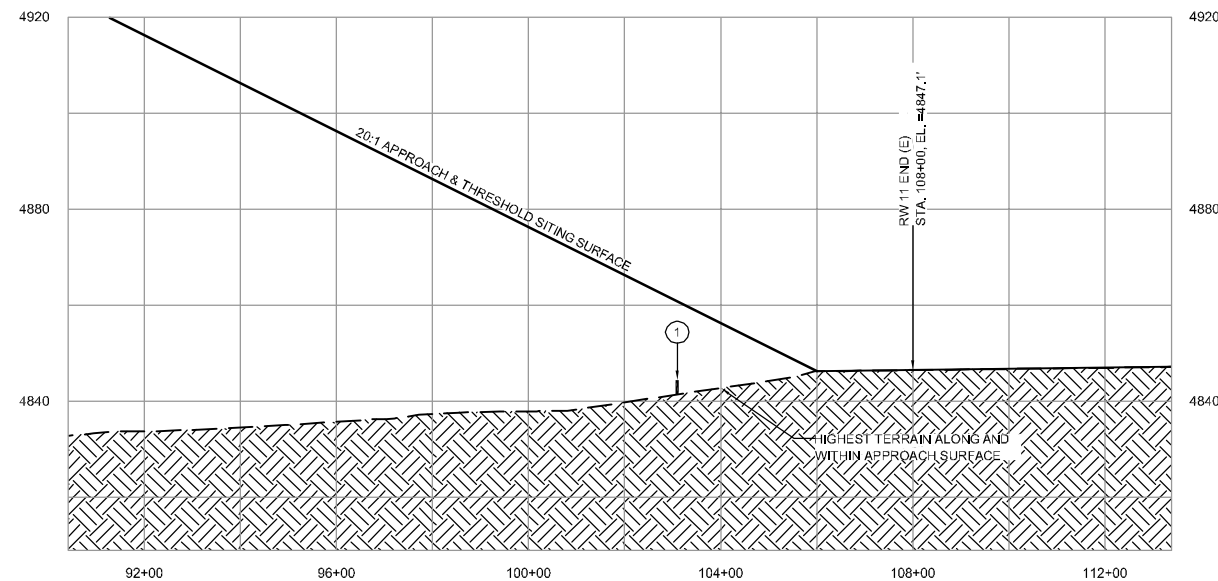
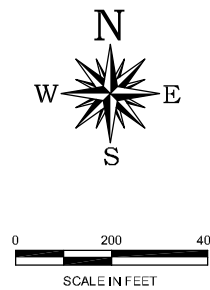
RUNWAY 11 PLAN (E)

SCALE: PER BARSCALE



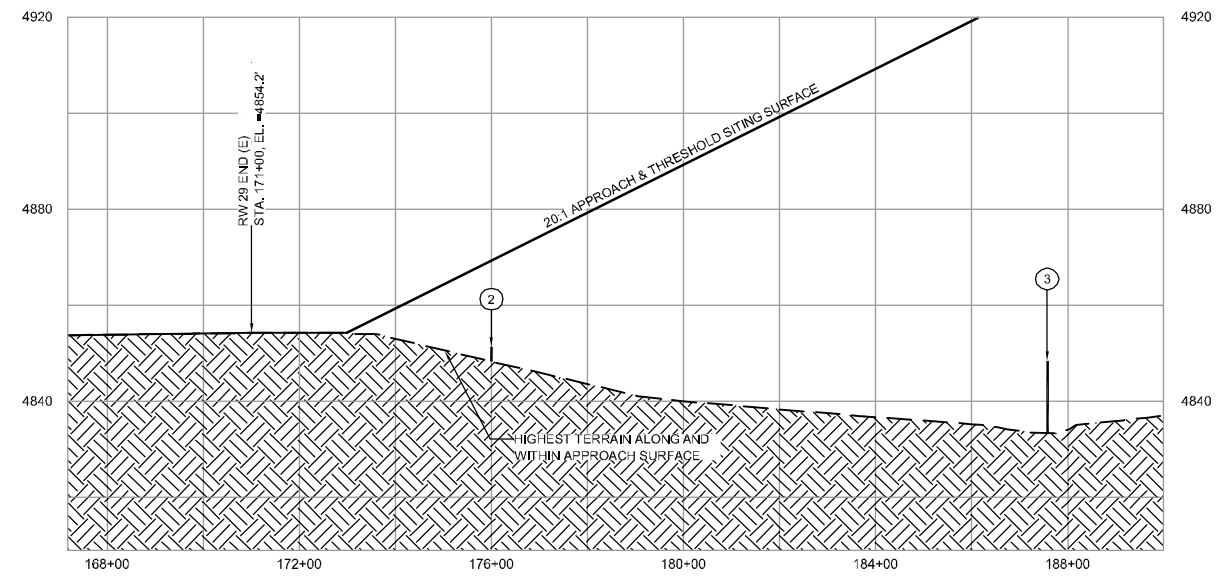
RUNWAY 29 PLAN (E)

SCALE: PER BARSCALE



RUNWAY 11 PROFILE (E)

SCALE: PER GRID



RUNWAY 29 PROFILE (E)

SCALE: PER GRID

OBJECTS WITHIN INNER APPROACH SURFACE					
NO.	SURFACE	OBJECT	TOP ELEVATION	PENETRATION (E)	PROPOSED ACTION
1	APPROACH (E)	FENCE	4844'	-16.4'	NONE

NOTE: OBJECT ELEVATIONS IN FEET MSL (VERTICAL DATUM NAVD83).
THERE ARE NO INNER APPROACH SURFACES PENETRATIONS.

LEGEND					
EXISTING	FUTURE/ULTIMATE	DESCRIPTION	EXISTING	FUTURE	DESCRIPTION
[Symbol]	[Symbol]	AIRFIELD DEVELOPMENT (ASPHALT)	[Symbol]	[Symbol]	THRESHOLD LIGHTS
[Symbol]	[Symbol]	STRUCTURE/FACILITIES (BUILDING)	[Symbol]	[Symbol]	RAIL
[Symbol]	[Symbol]	AIRPORT PROPERTY LINE (APL)	[Symbol]	[Symbol]	VASI/PAPI
[Symbol]	[Symbol]	RUNWAY SAFETY AREA (RSA)	[Symbol]	[Symbol]	AIRPORT REFERENCE POINT (ARP)
[Symbol]	[Symbol]	OBSTACLE FREE ZONE (OFZ)	[Symbol]	[Symbol]	AIRPORT BEACON
[Symbol]	[Symbol]	RUNWAY OBJECT FREE AREA (ROFA)	[Symbol]	[Symbol]	WIND CONE & SEGMENTED CIRCLE
[Symbol]	[Symbol]	RUNWAY PROTECTION ZONE (RPZ)	[Symbol]	[Symbol]	SECTION CORNER
[Symbol]	[Symbol]	RUNWAY VISIBILITY ZONE (RVZ)	[Symbol]	[Symbol]	AWOS
[Symbol]	[Symbol]	BUILDING RESTRICTION LINE (BRL)	[Symbol]	[Symbol]	DRAINAGE/ CULVERT
[Symbol]	[Symbol]	TAXIWAY SAFETY AREA (TSA)	[Symbol]	[Symbol]	CONTOURS
[Symbol]	[Symbol]	TAXIWAY OBJECT FREE AREA (TOFA)	[Symbol]	[Symbol]	ROADS
[Symbol]	[Symbol]	FENCING	[Symbol]	[Symbol]	MARKINGS
[Symbol]	[Symbol]		[Symbol]	[Symbol]	CUT / EXCAVATION
[Symbol]	[Symbol]		[Symbol]	[Symbol]	FILL / EMBANKMENT

*PACS = PRIMARY AIRPORT CONTROL STATION
SACS = SECONDARY AIRPORT CONTROL STATION

OBJECTS WITHIN INNER APPROACH SURFACE					
NO.	SURFACE	OBJECT	TOP ELEVATION	PENETRATION (E)	PROPOSED ACTION
2	APPROACH (E)	FENCE	4851'	-17.9'	NONE
3	APPROACH (E)	ROAD	4848'	-78.6'	NONE

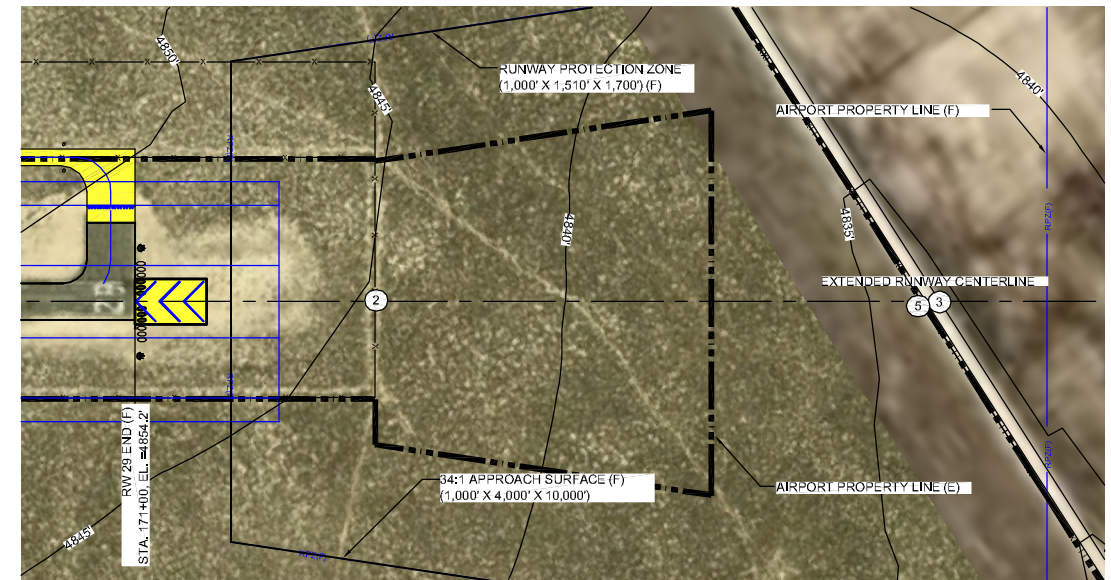
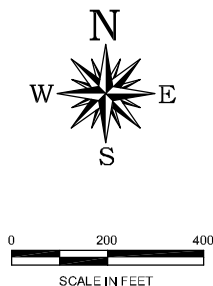
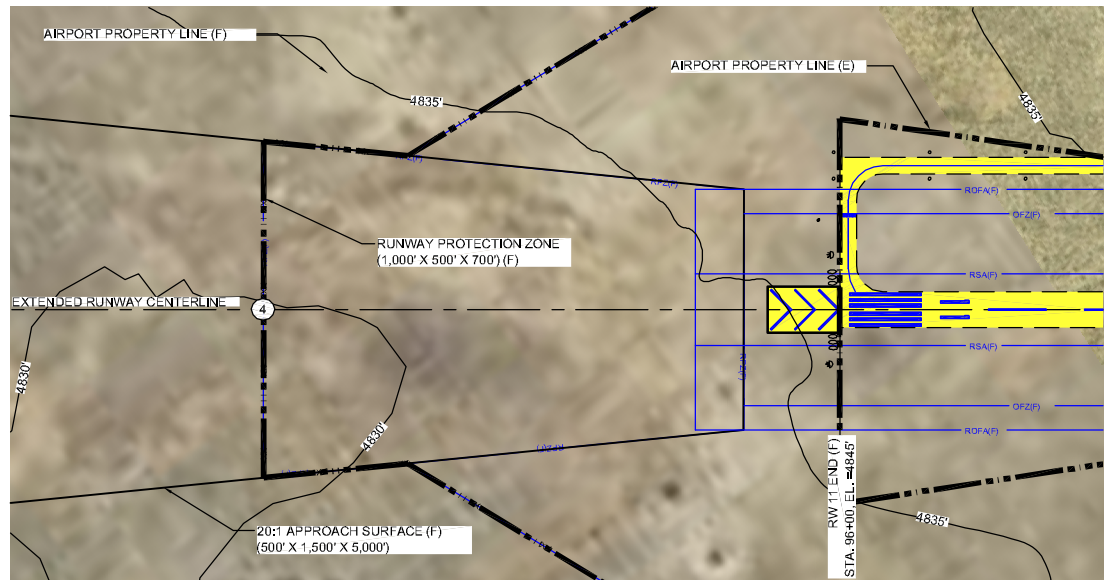
NOTE: OBJECT ELEVATIONS IN FEET MSL (VERTICAL DATUM NAVD83).
THERE ARE NO INNER APPROACH SURFACES PENETRATIONS.

No.	Revision	Date	By

Project No: 075831
Date: 12.15.08
File Name: 5831505

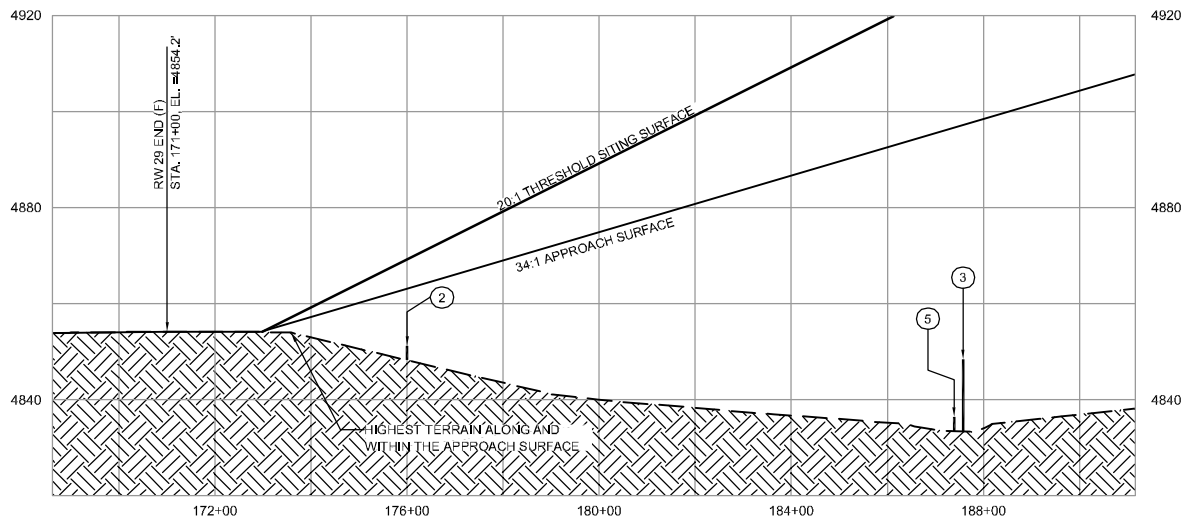
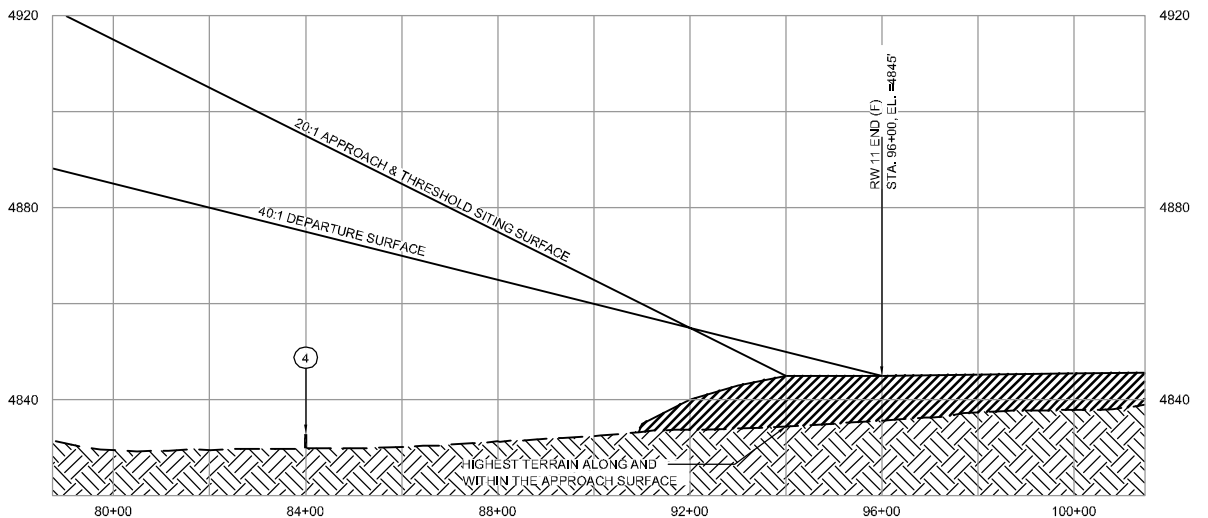
Drawn: GWK
Checked: JZP
Approved: DAC

(E) INNER
APPROACH
DRAWING



RUNWAY 11 PLAN (F)
SCALE: PER BARSCALE

RUNWAY 29 PLAN (F)
SCALE: PER BARSCALE



RUNWAY 11 PROFILE (F)
SCALE: PER GRID

RUNWAY 29 PROFILE (F)
SCALE: PER GRID

OBJECTS WITHIN INNER APPROACH SURFACE					
NO.	SURFACE	OBJECT	TOP ELEVATION	PENETRATION (F)	PROPOSED ACTION
4	APPROACH (F)	FUTURE FENCE	4833'	-62.1'	NONE

NOTE: OBJECT ELEVATIONS IN FEET MSL (VERTICAL DATUM NAVD83).
THERE ARE NO INNER APPROACH SURFACES PENETRATIONS.

LEGEND					
EXISTING	FUTURE/ULTIMATE	DESCRIPTION	EXISTING	FUTURE	
▬	▬	AIRFIELD DEVELOPMENT (ASPHALT)	000 000	0000 0000	THRESHOLD LIGHTS
▬	▬	STRUCTURE/FACILITIES (BUILDING)	☐	☐	REIL
▬	▬	AIRPORT PROPERTY LINE (APL)	▬	▬	VASI/PAPI
▬	▬	RUNWAY SAFETY AREA (RSA)	☐	☐	AIRPORT REFERENCE POINT (ARP)
▬	▬	OBSTACLE FREE ZONE (OFZ)	☐	☐	AIRPORT BEACON
▬	▬	RUNWAY OBJECT FREE AREA (ROFA)	☐	☐	WIND CONE & SEGMENTED CIRCLE
▬	▬	RUNWAY PROTECTION ZONE (RPZ)	▬	N/A	SECTION CORNER
▬	▬	RUNWAY VISIBILITY ZONE (RVZ)	▬	▬	AWOS
▬	▬	BUILDING RESTRICTION LINE (BRL)	▬	▬	DRAINAGE/ CULVERT
▬	▬	TAXIWAY SAFETY AREA (TSA)	▬	N/A	CONTOURS
▬	▬	TAXIWAY OBJECT FREE AREA (TOFA)	▬	▬	ROADS
▬	▬	FENCING	▬	▬	MARKINGS
▬	▬		▬	▬	CUT / EXCAVATION
▬	▬		▬	▬	FILL / EMBANKMENT

*PACS = PRIMARY AIRPORT CONTROL STATION
SACS = SECONDARY AIRPORT CONTROL STATION

OBJECTS WITHIN INNER APPROACH SURFACE					
NO.	SURFACE	OBJECT	TOP ELEVATION	PENETRATION (F)(U)	PROPOSED ACTION
2	APPROACH (F)	FENCE	4851'	-11.8'	NONE
3	APPROACH (F)	ROAD	4848'	-48.7'	NONE
5	APPROACH (F)	FUTURE FENCE	4848'	-60.1'	NONE

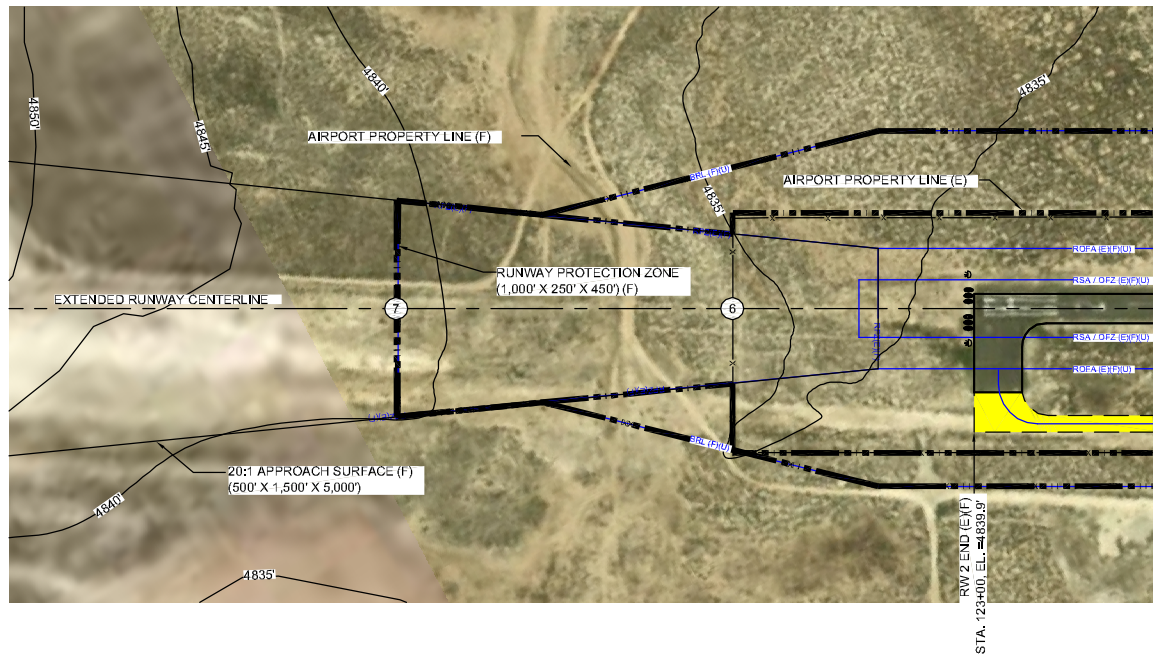
NOTE: OBJECT ELEVATIONS IN FEET MSL (VERTICAL DATUM NAVD83).
THERE ARE NO INNER APPROACH SURFACES PENETRATIONS.

No.	Revision	Date	By

Project No: 075831
Date: 12.15.08
File Name: 5831505

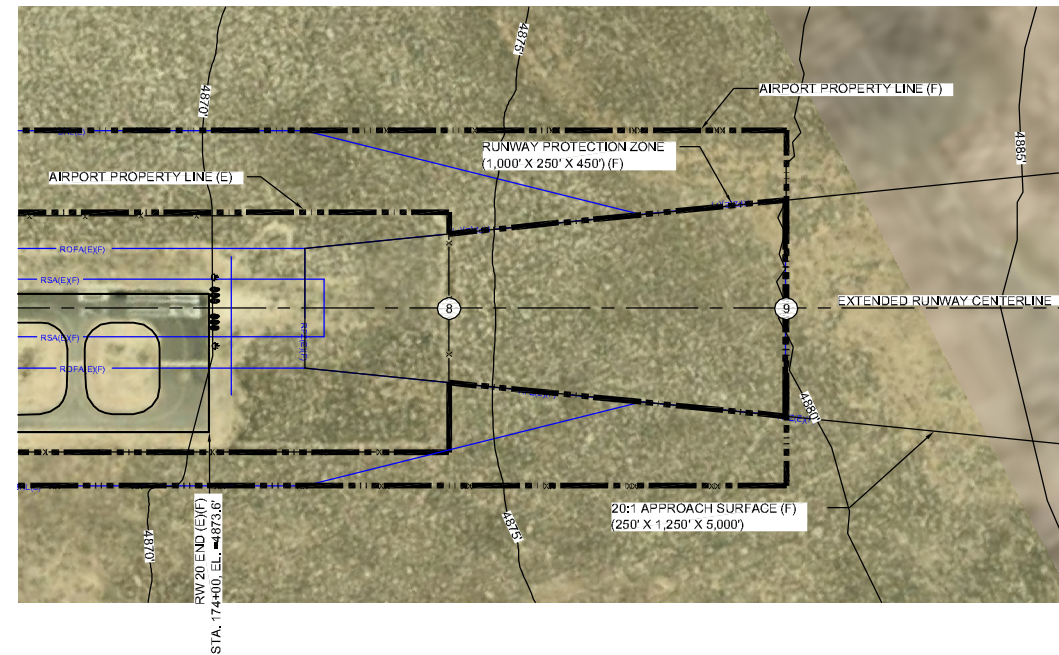
Drawn: GWK
Checked: JZP
Approved: DAC

(F) INNER APPROACH DRAWING



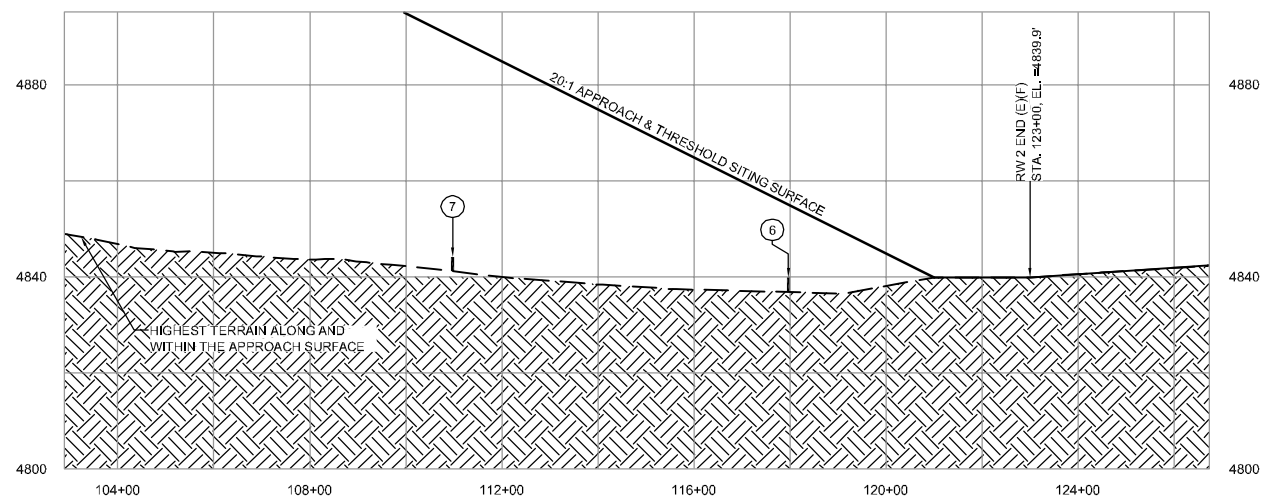
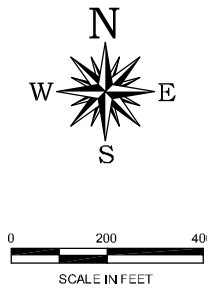
RUNWAY 2 PLAN (E)(F)

SCALE: PER BARSCALE



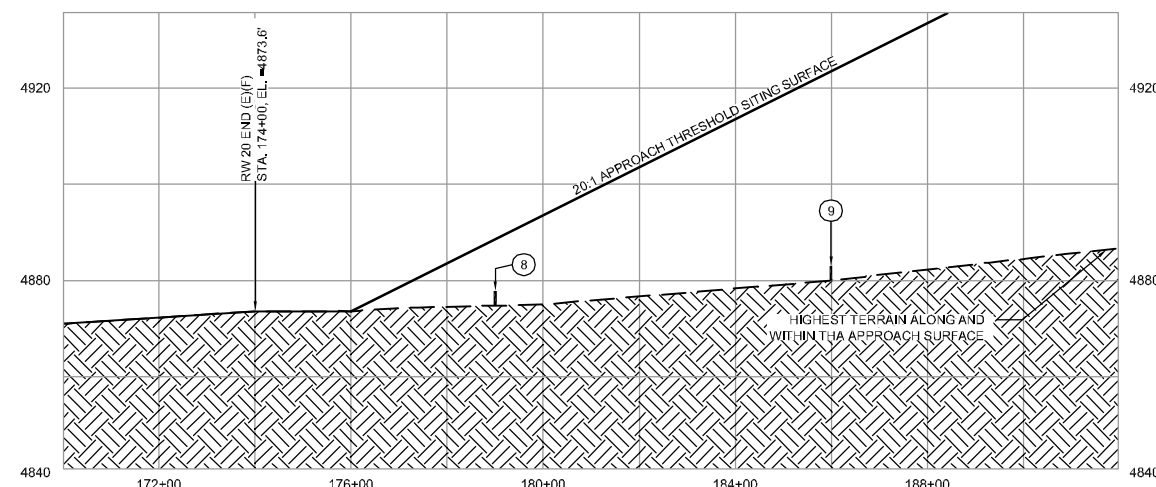
RUNWAY 20 PLAN (E)(F)

SCALE: PER BARSCALE



RUNWAY 2 PROFILE (E)(F)

SCALE: PER GRID



RUNWAY 20 PROFILE (E)(F)

SCALE: PER GRID

OBJECTS WITHIN INNER APPROACH SURFACE					
NO.	SURFACE	OBJECT	TOP ELEVATION	PENETRATION (E)(F)	PROPOSED ACTION
6	APPROACH	EXISTING FENCE	4843'	-15.2'	NONE
7	APPROACH	FUTURE FENCE	4847'	-45.8'	NONE

NOTE: OBJECT ELEVATIONS IN FEET MSL (VERTICAL DATUM NAVD83).
THERE ARE NO INNER APPROACH SURFACES PENETRATIONS.

LEGEND					
EXISTING	FUTURE/ULTIMATE	DESCRIPTION	EXISTING	FUTURE	
▬	▬	AIRFIELD DEVELOPMENT (ASPHALT)	000 000	0000 0000	THRESHOLD LIGHTS
▬	▬	STRUCTURE/FACILITIES (BUILDING)	▬	▬	REIL
▬	▬	AIRPORT PROPERTY LINE (APL)	▬	▬	VASI/PAPI
▬	▬	RUNWAY SAFETY AREA (RSA)	▬	▬	AIRPORT REFERENCE POINT (ARP)
▬	▬	OBSTACLE FREE ZONE (OFZ)	▬	▬	AIRPORT BEACON
▬	▬	RUNWAY OBJECT FREE AREA (ROFA)	▬	▬	WIND CONE & SEGMENTED CIRCLE
▬	▬	RUNWAY PROTECTION ZONE (RPZ)	▬	N/A	SECTION CORNER
▬	▬	RUNWAY VISIBILITY ZONE (RVZ)	▬	▬	AWOS
▬	▬	BUILDING RESTRICTION LINE (BRL)	▬	▬	DRAINAGE/ CULVERT
▬	▬	TAXIWAY SAFETY AREA (TSA)	▬	N/A	CONTOURS
▬	▬	TAXIWAY OBJECT FREE AREA (TOFA)	▬	▬	ROADS
▬	▬	FENCING	▬	▬	MARKINGS
▬	▬		▬	▬	CUT / EXCAVATION
▬	▬		▬	▬	FILL / EMBANKMENT

*PACS = PRIMARY AIRPORT CONTROL STATION
SACS = SECONDARY AIRPORT CONTROL STATION

OBJECTS WITHIN INNER APPROACH SURFACE					
NO.	SURFACE	OBJECT	TOP ELEVATION	PENETRATION (E)(F)	PROPOSED ACTION
8	APPROACH	EXISTING FENCE	4878'	-10.8'	NONE
9	APPROACH(F)	FUTURE FENCE	4883'	-40.6'	NONE

NOTE: OBJECT ELEVATIONS IN FEET MSL (VERTICAL DATUM NAVD83).
THERE ARE NO INNER APPROACH SURFACES PENETRATIONS.



No.	Revision	Date	By

Project No: 075831
Date: 12.15.08
File Name: 5831505

Drawn: GWK
Checked: JZP
Approved: DAC

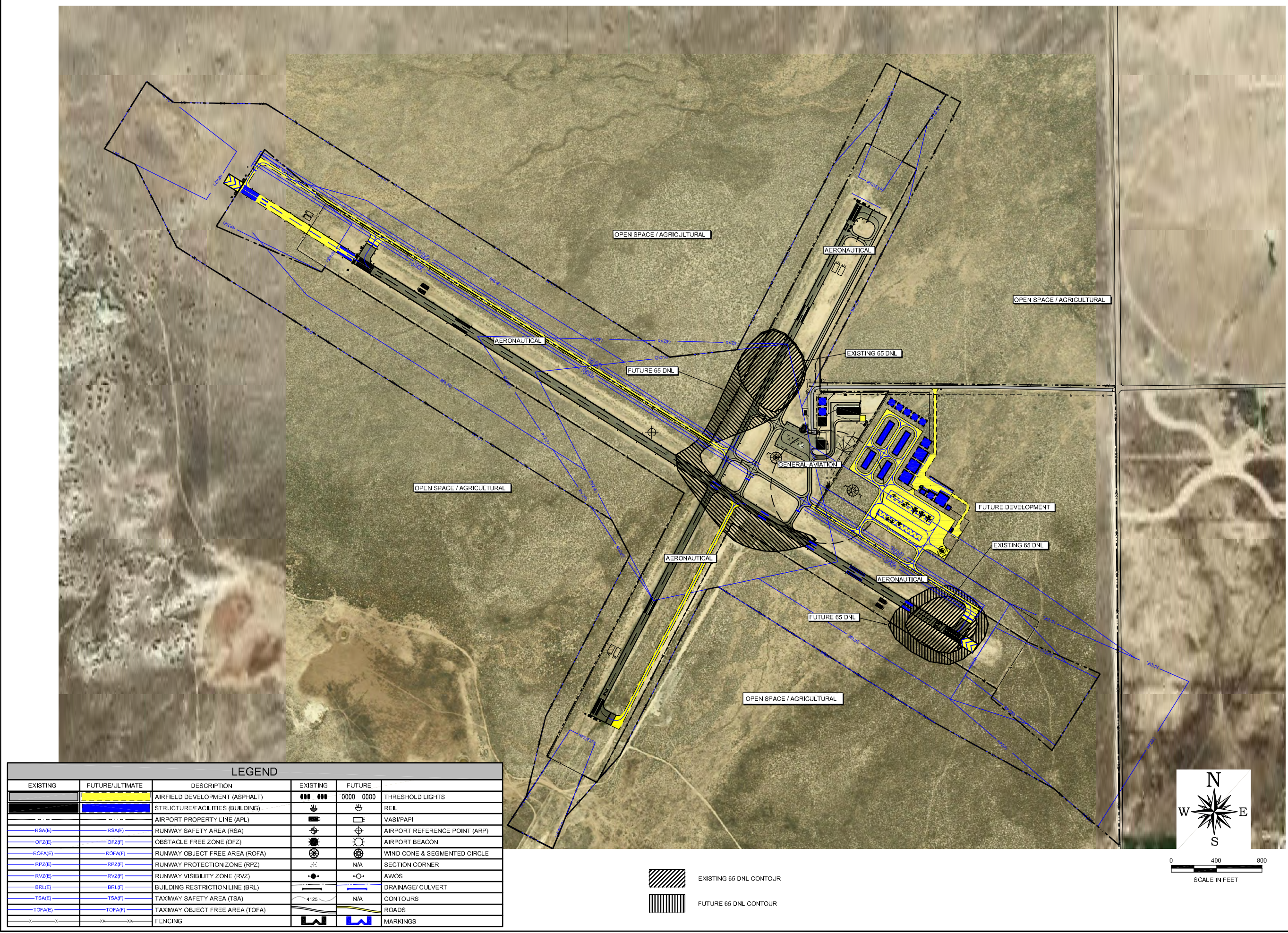
(F) INNER APPROACH DRAWING

No.	Revision	Date	By

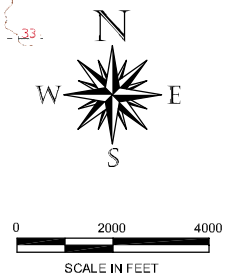
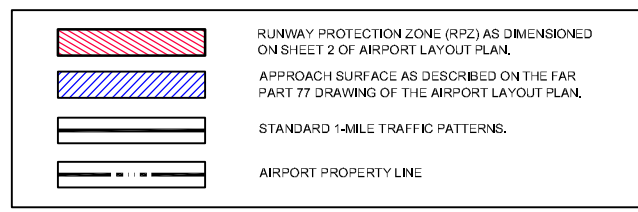
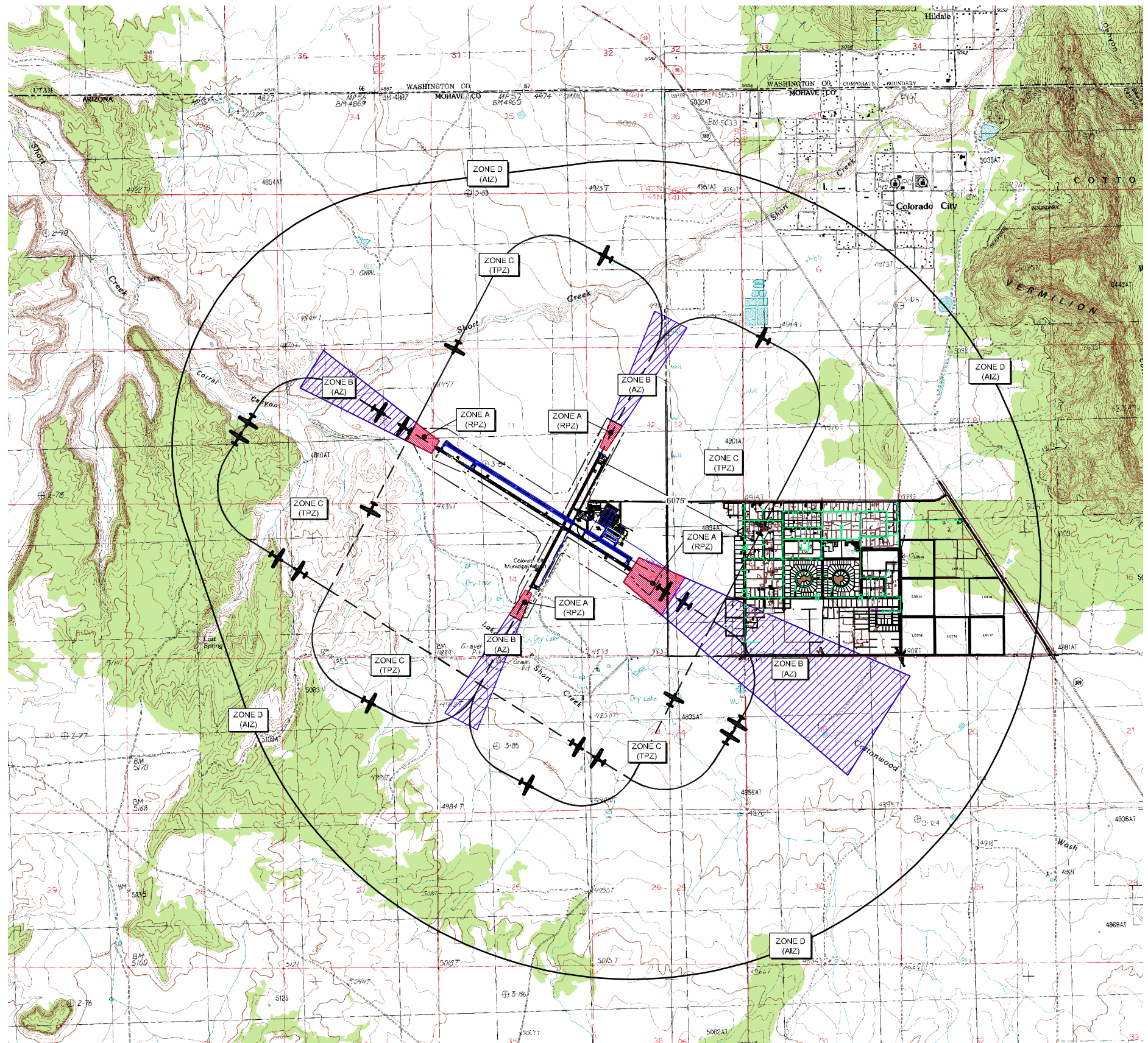
Project No: 075831
Date: 12.15.08
File Name: 5831506

Drawn: GWK
Checked: JZP
Approved: DAC

**ON-AIRPORT
LAND
USE**



LEGEND		EXISTING	FUTURE	DESCRIPTION
EXISTING	FUTURE/ULTIMATE	000 000	0000 0000	THRESHOLD LIGHTS
				STRUCTURE/FACILITIES (BUILDING)
				AIRPORT PROPERTY LINE (APL)
—RSA(E)—	—RSA(F)—			RUNWAY SAFETY AREA (RSA)
—OFZ(E)—	—OFZ(F)—			OBSTACLE FREE ZONE (OFZ)
—ROFA(E)—	—ROFA(F)—			RUNWAY OBJECT FREE AREA (ROFA)
—RPZ(E)—	—RPZ(F)—			RUNWAY PROTECTION ZONE (RPZ)
—RVZ(E)—	—RVZ(F)—			RUNWAY VISIBILITY ZONE (RVZ)
—BRL(E)—	—BRL(F)—			BUILDING RESTRICTION LINE (BRL)
—TSA(E)—	—TSA(F)—			TAXIWAY SAFETY AREA (TSA)
—TOFA(E)—	—TOFA(F)—			TAXIWAY OBJECT FREE AREA (TOFA)
—X—X—	—X—X—			FENCING
				MARKINGS
				AWOS
				DRAINAGE/ CULVERT
				CONTOURS
				ROADS
				EXISTING 65 DNL CONTOUR
				FUTURE 65 DNL CONTOUR



LAND USE COMPATIBILITY GUIDELINES

Land Use Category	ZONE D Airport Influence (AIZ)	ZONE C Traffic Pattern (TPZ)	ZONE B Approach (AZ)	ZONE A Runway Protection (RPZ)
Residential				
single-family, nursing homes, mobile homes, multi-family, apartments, condominiums, transient lodging, hotel, motel	+	- (1,3)	-(1,3)	--
	+	o (1,3)	-(1,3)	--
Public				
schools, libraries, hospitals	+	o (3)	-(3)	--
churches, auditoriums, concert halls	+	o (3)	-(3)	--
transportation, parking, cemeteries	++	++	++	-(2.5)
Commercial and Industrial				
offices, retail trade, service commercial, wholesale trade, warehousing, light industrial, general manufacturing, utilities, extractive industry	++	+	o (3)	--
Agricultural and Recreational				
cropland	++	++	++	++
livestock breeding	++	++	++	-(2)
parks, playgrounds, zoos, golf courses, riding stables, water recreation	++	+	-(3)	--
outdoor spectator sports	++	+	-(3)	--
amphitheaters	o	-(4)	++	++
open space	++	++	++	++

NOTE: DEVELOPMENT PROJECTS WHICH ARE WILDLIFE ATTRACTANT, INCLUDING SEWERAGE PONDS AND LANDFILLS, WITHIN 10,000 FEET OF THE AIRPORT ARE UNACCEPTABLE. (REF.: FAA AC 150/5200-33)

- (1) If allowed, aviation easements and disclosure must be required as a condition of development.
- (2) Any structures associated with uses allowed in the RPZ must be located outside the RPZ.
- (3) If no reasonable alternative exists, use should be located as far from extended centerline as possible.
- (4) If no reasonable alternative exists, use should be located as far from extended runway centerline and traffic patterns as possible.
- (5) Transportation facilities in the RPZ (i.e. roads, railroads, waterways) must be configured to comply with Part 77 requirements.

CRITERIA

Land Use Availability	Interpretation/Comments
++ Clearly Acceptable	The activities associated with the specified land use will experience little or no impact due to airport operations. Disclosure of airport proximity should be required as a condition of development.
+ Normally Acceptable	The specified land use is acceptable in this zone or area. Impact may be perceived by some residents. Disclosure of airport proximity should be required as a condition of development. Dedication of aviation easements may also be advisable.
o Conditionally Acceptable	If appropriate disclosure is made and aviation easements put in place, residential uses and uses involving indoor public assemblies are acceptable.
- Normally Unacceptable	Specified use should be allowed only if no reasonable alternative exists. Disclosure of airport proximity and aviation easements must be required as a condition of development.
-- Clearly Unacceptable	Specified use must not be allowed. Potential safety or overflight nuisance impacts are likely in this area.

EXISTING ZONING ORDINANCES

Compatible land use and height restriction zoning is currently existing.

NOTICE OF PROPOSED CONSTRUCTION

An FAA Form 7460-1, "Notice of Proposed Construction or Alteration" must be submitted for any construction or alteration (including hangars and other on-airport and off-airport structures, towers, etc.) within 20,000 horizontal feet of the airport greater in height than an imaginary surface extending outward and upward from the runway at a slope of 100 to 1 or greater in height than 200 feet above ground level.

LEGEND

- CHURCH
- SCHOOL
- HOSPITAL
- PARK

ARMSTRONG CONSULTANTS, Inc.
airport engineering and planning services
www.armstrongconsultants.com

861 Rood Avenue
Grand Junction, CO 81501
ph: 970.242.0101 fax: 970.241.1769

COLORADO CITY MUNICIPAL AIRPORT
COLORADO CITY, ARIZONA

AIRPORT LAYOUT PLANS

No.	Revision	Date	By

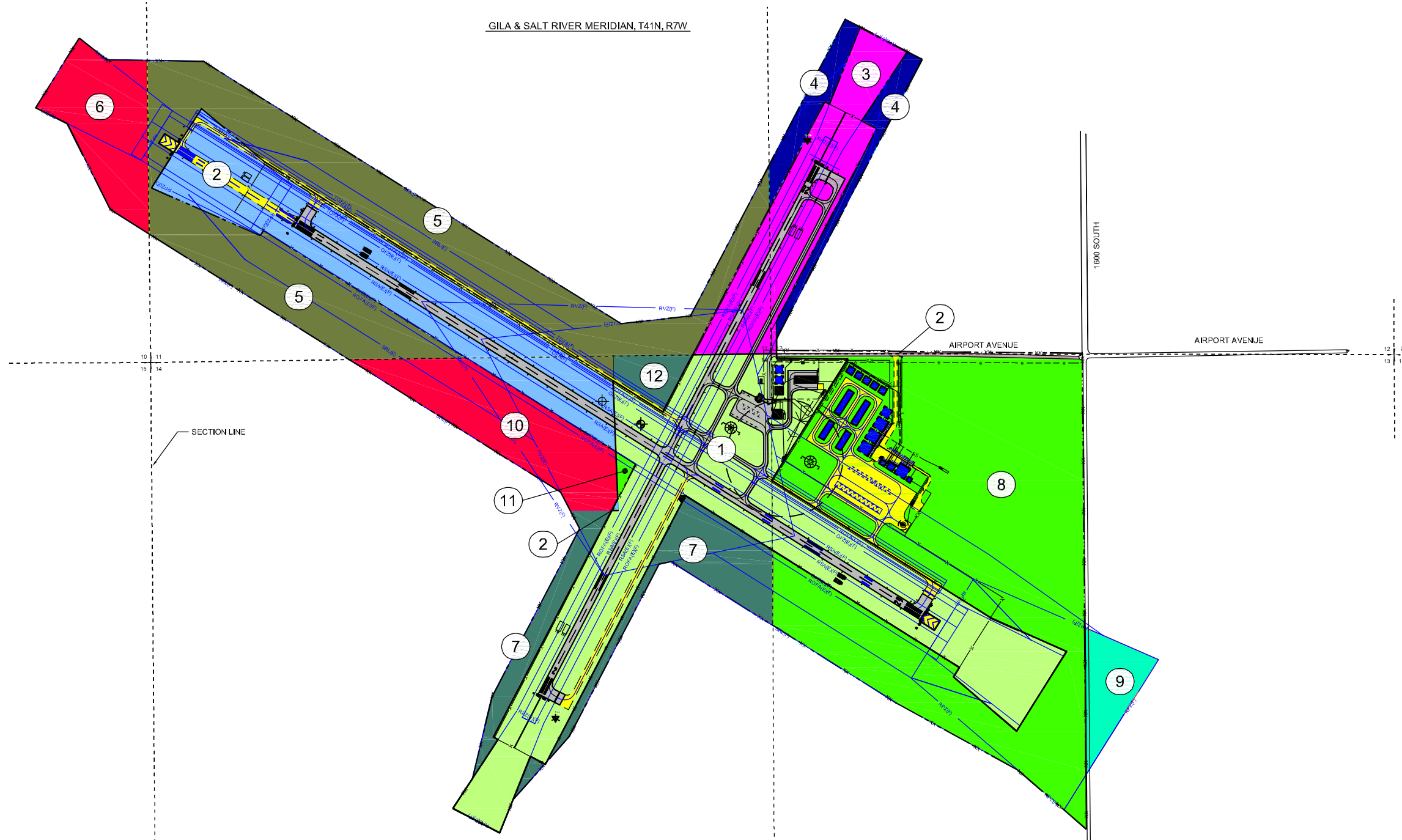
Project No: 075831
Date: 12.15.08
File Name: 5831507

Drawn: GWK
Checked: JZP
Approved: DAC

OFF AIRPORT LAND USE

EXISTING AIRPORT PROPERTY

TRACT	CURRENT OWNER	INTEREST	DATE	BOOK/PAGE	ACREAGE	PURPOSE	TOWNSHIP / RANGE / SECTION
1	COLORADO CITY, ARIZONA	BLM/DEPT. OF INTERIOR PATENT NO. 02-940015	JUNE 2, 1994	2469/pgs. 195-206	111.89	AERONAUTICAL	T41N, R7W SECTIONS 14&13
2	COLORADO CITY, ARIZONA	FEE SIMPLE / AIP NO. 3-04-0076-02	-	1862/pgs. 124-126	56.85	AERONAUTICAL	T41N, R7W SECTIONS 11, 12&14
3	COLORADO CITY, ARIZONA	FEE SIMPLE INTEREST	-	1862/pgs. 124-126	34.89	AERONAUTICAL	T41N, R7W SECTIONS 11&12



GILA & SALT RIVER MERIDIAN, T41N, R7W

1800 SOUTH

AIRPORT AVENUE

AIRPORT AVENUE

SECTION LINE

LEGEND

EXISTING	FUTURE/ULTIMATE	DESCRIPTION	EXISTING	FUTURE	DESCRIPTION
---	---	AIRFIELD DEVELOPMENT (ASPHALT)	000 000	0000 0000	THRESHOLD LIGHTS
---	---	STRUCTURE/FACILITIES (BUILDING)	☐	☐	REL
---	---	AIRPORT PROPERTY LINE (APL)	---	---	VASI/PAPI
---	---	RUNWAY SAFETY AREA (RSA)	---	---	AIRPORT REFERENCE POINT (ARP)
---	---	OBSTACLE FREE ZONE (OFZ)	---	---	AIRPORT BEACON
---	---	RUNWAY OBJECT FREE AREA (ROFA)	---	---	WIND CONE & SEGMENTED CIRCLE
---	---	RUNWAY PROTECTION ZONE (RPZ)	---	N/A	SECTION CORNER
---	---	RUNWAY VISIBILITY ZONE (RVZ)	---	---	AWOS
---	---	BUILDING RESTRICTION LINE (BRL)	---	---	DRAINAGE/ CULVERT
---	---	TAXIWAY SAFETY AREA (TSA)	---	N/A	CONTOURS
---	---	TAXIWAY OBJECT FREE AREA (TOFA)	---	---	ROADS
---	---	FENCING	---	---	MARKINGS

PROPERTY TO BE ACQUIRED

PARCEL	CURRENT OWNER	INTEREST	PARCEL NO.	ACREAGE	PURPOSE	SECTION NUMBER	TOWNSHIP & RANGE
4	ESPLIN CATTLE CO.	FEE SIMPLE	404-27-043	12.2	AERONAUTICAL / APPROACH PROTECTION	12	T 41 N, R 7 W
5	ESPLIN CATTLE CO.	FEE SIMPLE	404-27-042	89.2	AERONAUTICAL / APPROACH PROTECTION	11 & 14	T 41 N, R 7 W
6	UNITED STATES OF AMERICA / BLM	PATENT	404-27-058	20.4	APPROACH PROTECTION	10	T 41 N, R 7 W
7	UNITED STATES OF AMERICA / BLM	PATENT	404-44-005	25.4	AERONAUTICAL / APPROACH PROTECTION	14	T 41 N, R 7 W
8	UNITED STATES OF AMERICA / BLM	PATENT	404-27-044	146.9	AERONAUTICAL / APPROACH PROTECTION	13	T 41 N, R 7 W
9	WORK OF JESUS CHRIST / TIMPSON JOHN C/O	EASEMENT	404-27-077	9.1	APPROACH PROTECTION	13	T 41 N, R 7 W
10	ESPLIN CATTLE CO.	FEE SIMPLE	404-27-042	25.9	AERONAUTICAL	14	T 41 N, R 7 W
11	UNITED STATES OF AMERICA / BLM	PATENT	404-44-004	.80	AERONAUTICAL	14	T 41 N, R 7 W
12	UNITED STATES OF AMERICA / BLM	PATENT	404-44-003	4.7	AERONAUTICAL	14	T 41 N, R 7 W

ARMSTRONG CONSULTANTS, Inc.
airport engineering and planning services

COLORADO CITY MUNICIPAL AIRPORT
COLORADO CITY, ARIZONA

AIRPORT MASTER PLAN

No.	Revision	Date	By

Project No: 075831
Date: 12,15,08
File Name: 5831508

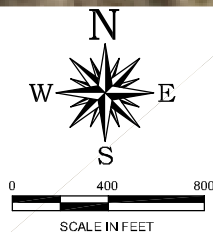
Drawn: GWK
Checked: JZP
Approved: DAC

EXHIBIT A
PROPERTY
MAP

Sheet: 12 of 13

861 Rood Avenue
Grand Junction, CO 81501
ph: 970.242.0101 fax: 970.241.1769

www.armstrongconsultants.com



PHOTOGRAPHED IN 2005

No.	Revision	Date	By

Project No: 075831
Date: 12.15.08
File Name: 5831509

Drawn: GWK
Checked: JZP
Approved: DAC

AERIAL PHOTOGRAPH

Sheet: **13** of **13**

COLORADO CITY MUNICIPAL AIRPORT
COLORADO CITY, ARIZONA

AIRPORT LAYOUT PLANS

ARMSTRONG CONSULTANTS, Inc.
airport engineering and planning services

861 Rood Avenue
Grand Junction, CO 81501
ph: 970.242.0101 fax: 970.241.1769
www.armstrongconsultants.com