

***Appendix F
Design Standards Inventory***



***Kayenta Airport
Airport Master Plan***

Airside Inventory Checklist

Airport	Kayenta	ARC	B-II
City	Kayenta, Arizona	Approach Type	Visual
Contact	Phillip Zahne	Date Inventoried	9/29/04
Phone No.	(928) 697-8451	Inspected By	DC

Runway	5/23	Inventory	Published	Required	Actual
Distance To:					
Hold lines from centerline			-	200	203
Parallel taxiway from centerline			N/A	240	N/A
Aircraft parking from centerline			-	250	350
Runway width			75	75	75
Runway length			7,140	To be determined	7,140
RSA width			-	150	150(1)
ROFA width			-	500	500
Primary/transitional surface penetrations			-	Clear	4' brush
Longitudinal grade - site distance problems			-	Clear	Clear
OFZ			-	250X200	250x200
Pavement marking type			Basic	Visual	Visual
Pavement marking condition			Good	-	Fair
Pavement strength			12,500 (SWG)	-	12,500
Pavement condition			Fair	-	Poor (2)
				-	
Runway		5	End Inventory		
RSA beyond runway end				300	300
ROFA beyond runway end				300	300
Approach obstructions			None	None	None
Runway end elevation			5700' MSL	-	To be surveyed
Runway Lighting Inventory					
Distance from pavement edge			-	10	10
Maximum distance between lights				200	200
Type			MIRL	MIRL	MIRL
Condition			-	-	Fair-stake mounted Direct Burial
Color			-	White	White several missing
Other: Control (manual, photocell, pilot)			Dusk-Dawn	Dusk-Dawn	Dusk-Dawn
Runway		5	Threshold		
Distance from pavement edge			-	10	10
Maximum distance between lights			-		
Color			-	Green/Red	Green/Red
Number of lights			-	6	4 (2 missing)
Runway		23	End Inventory		
RSA beyond runway end				300	300
ROFA beyond runway end				300	300
Approach obstructions			None	None	None
Runway end elevation			5625' MSL	-	To be surveyed
Runway		23	Threshold		
Distance from pavement edge			-	10	10
Maximum distance between lights			-		
Color			-	Green/Red	Green/Red
Number of lights			-	6	5 (1 missing)

COMMENTS (1) Erosion and vegetation growth along edges of safety area.

(2) Deep rutting, severe cracking, collapsing pavement.

Others: Severe drainage problems, ponding near apron, taxiway, & runway.

Airside Inventory Checklist

Airport	Kayenta	ARC	B-II
City	Kayenta, Arizona	Approach Type	Visual
Contact	Phillip Zahne	Date Inventoried	9/29/04
Phone No.	(928) 697-8451	Inspected By	DC

Taxiway Inventory	Published	Required	Actual
Stub Connector			
Taixway width		35	35
TSA width		79	79
TOFA width		131	131
Dist. from centerline to fixed or movable obj		65.5	65.5
Pavement marking type		Centerline	
Pavement marking condition		-	Fair
Pavement strength	12,500		12,500
Pavement condition		NA	Poor (2)
Turnaround RWY 23			90x80
Turnaround RWY 5			90x85
Taxiway Lighting Inventory			
Distance from pavement edge	-	10	10
Maximum distance between lights	-	100	
Type	-	-	MITL
Condition	-	-	Fair stake mounted
Color	-	Blue	Direct Burial
			Blue
Miscellaneous			
Type of beacon	White-Green (land airport)	White-Green	White-Green
Size of beacon	-	-	2-light
Visual Aids (i.e. PAPI, VASI, REIL, etc.)	PVASI-RWY 23 (OTS)	-	PVASI-RWY 23 (out of service)
Windcone (condition & compliance)	Yes-lighted	-	Good-lighted
Segmented circle (condition & compliance)	yes	-	Good
Fencing		NA	5 strand-barbwire with mesh Poor-
Signs (type, condition, placement)		NA	missing sections Poor(1)

COMMENTS (1) Runway sign in poor conditon, in water.

Landside Inventory Checklist

Airport	Kayenta	ARC	B-II
City	Kayenta, Arizona	Approach Type	Visual
Contact	Phillip Zahne	Date Inventoried	9/29/04
Phone No.	(928) 697-8451	Inspected By	DC

Facilities	Existing	Notes
Tie-downs	10	more separation and build into wind
T-hangars	none	
Box hangars	none	
Apron		
Size	4,100 S.Y.	Too small needs more pavement space
Pavement strength	12,500	
Pavement condition	Fair	
Pavement marking	Good	
Pavement marking condition	Good	
Automobile Access	Paved road	Uncontrolled automobile access onto apron, taxiway, and runway. No gates or fencing.
Automobile parking	Gravel/Dirt	Poor (soft/wet/muddy)
Airport signage (way finding)	None	
Taxilane Widths	79	115 feet needed for group II aircraft
Weather equipment	None	
Fuel storage	8,000 gallons Jet A 6,000 gallons 100LL	Eagle Air Med Tanks
Fuel type available	None	(Corporate self fueling Eagle Air Med only)
FBO/Terminal building	None	

COMMENTS _____



FILM CREW KING AIR 200



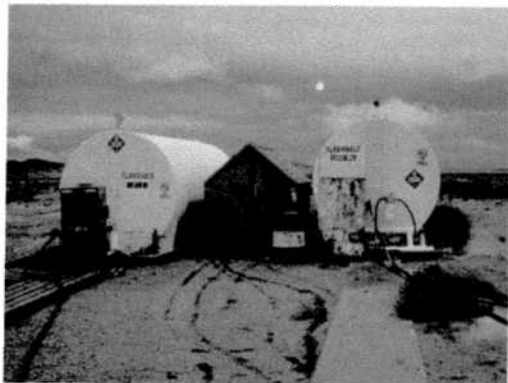
CESSNA 182 ON RAMP
(NOTE TIEDOWN DIRECTION)



EAGLE AIR MED C-90



AIRPORT BEACON
(NOTE APRON DRAINAGE)



EAGLE AIR MED'S FUEL FARM



HOLD LINE AND SIGN



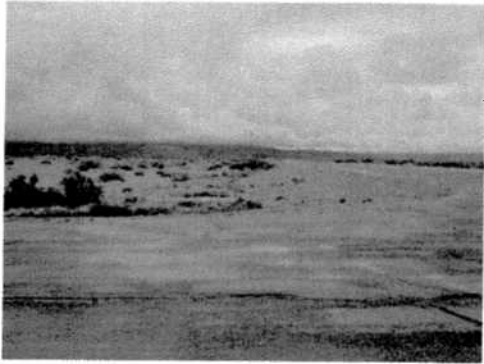
TAXIWAY PAVEMENT SURFACE
(NOTE RUTTING)



CRACK SIZES



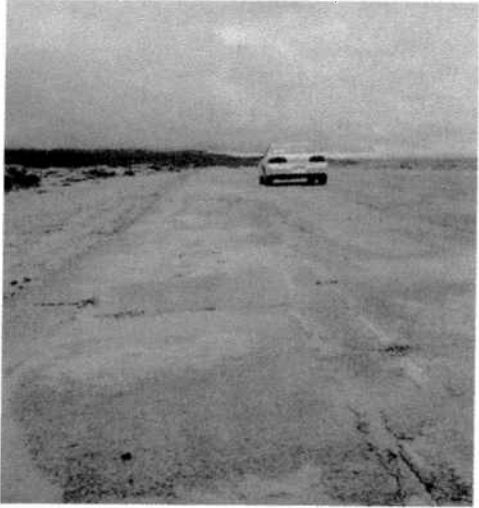
RUNWAY PAVEMENT AND
SAFETY AREA



RUNWAY TAXIWAY
CONNECTOR



RUNWAY PAVEMENT
(NOTE RUTTING)



RUNWAY PAVEMENT