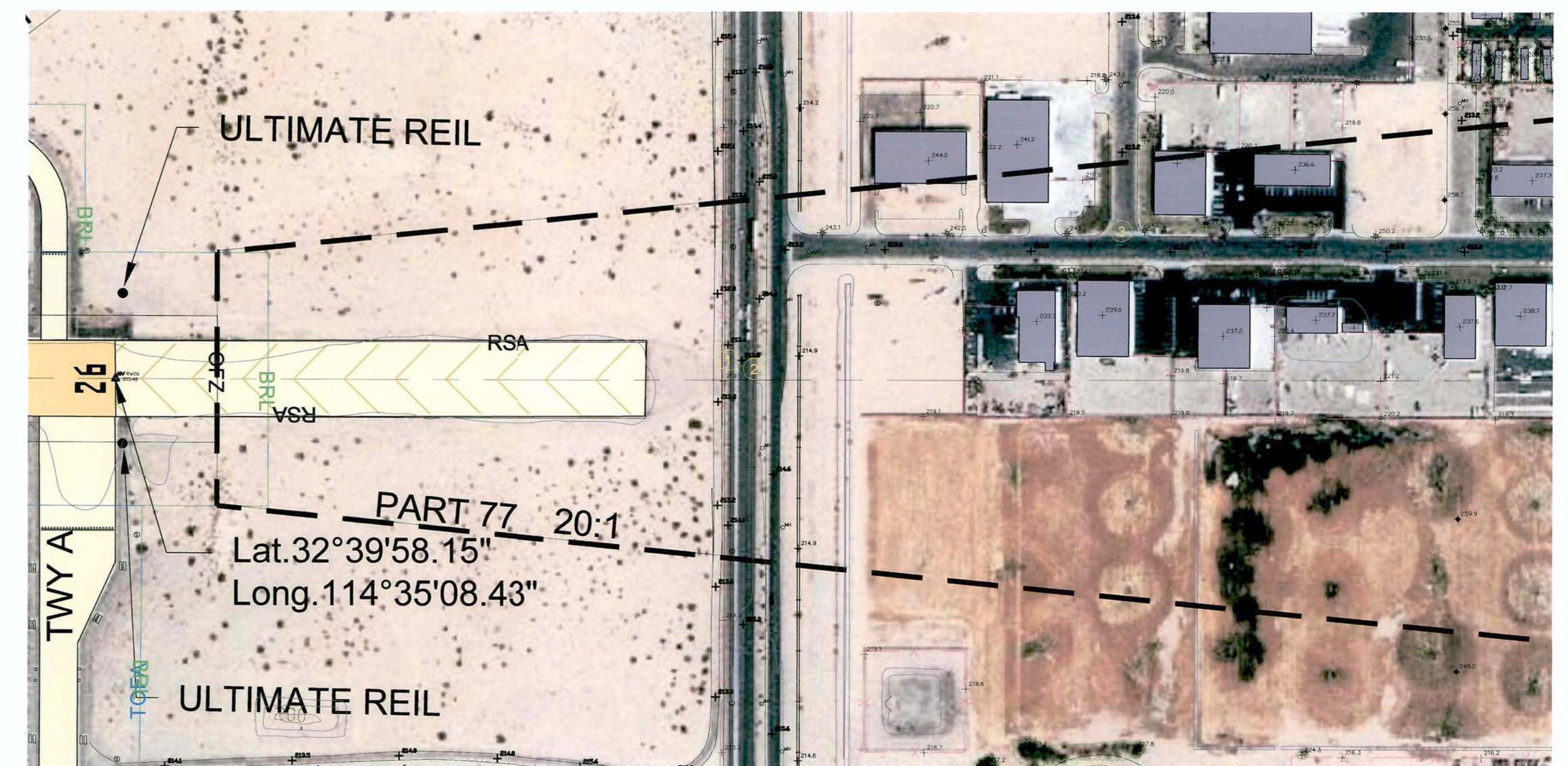
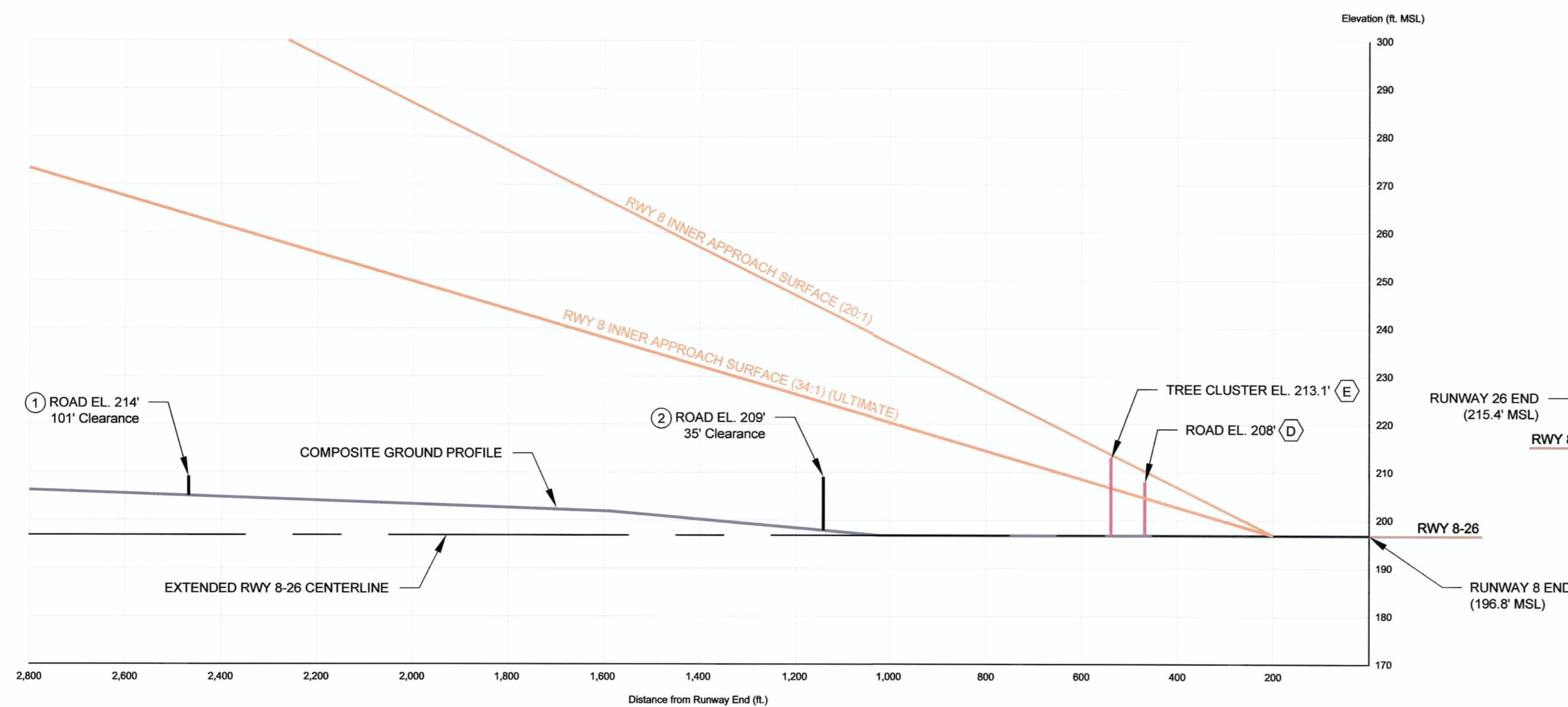


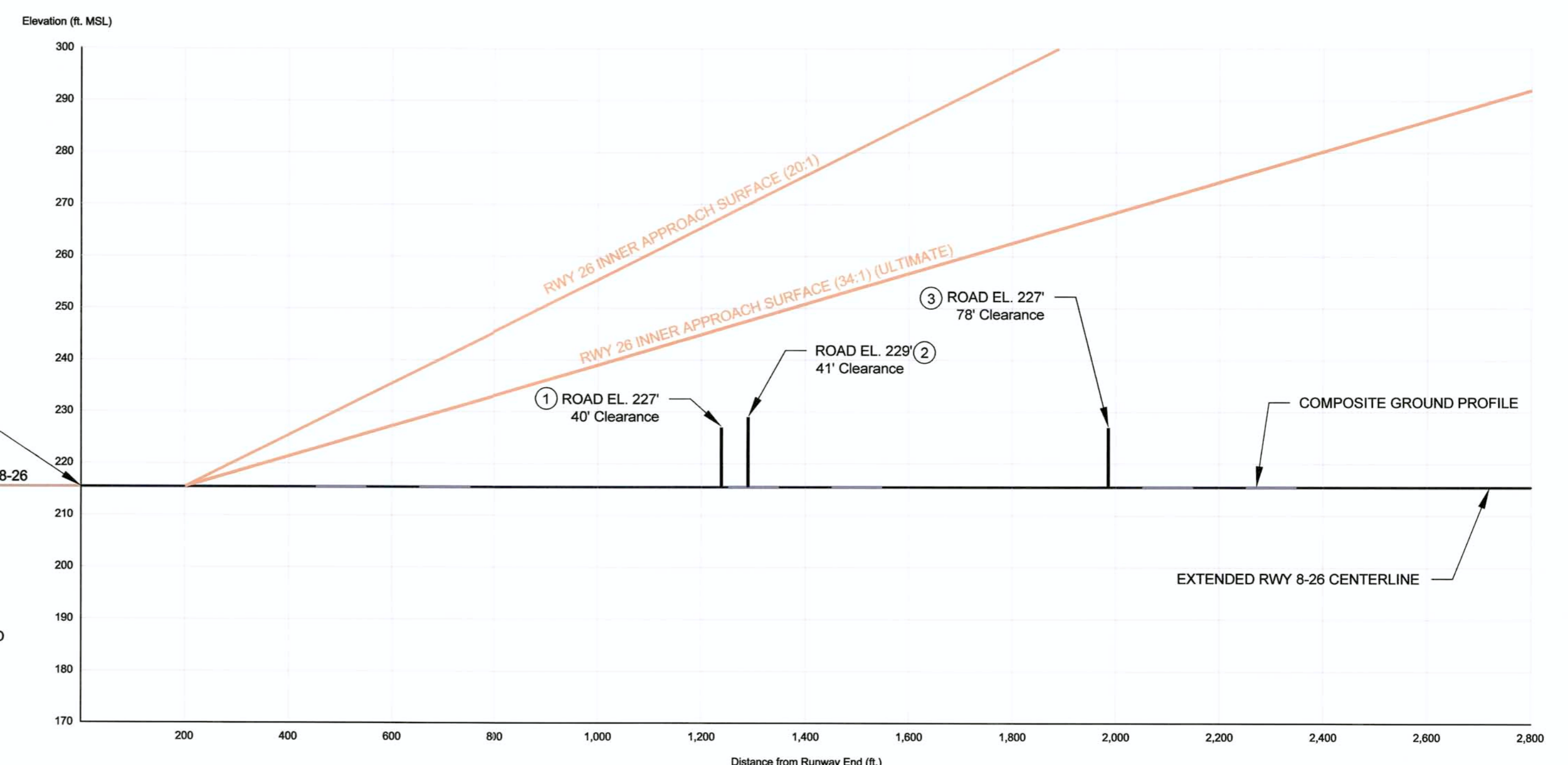
**RUNWAY 8 APPROACH ZONE PLAN**



**RUNWAY 26 APPROACH ZONE PLAN**



**RUNWAY 8 APPROACH ZONE PROFILE**



**RUNWAY 26 APPROACH ZONE PROFILE**

OBSTRUCTION TABLE				
NO.	OBJECT	TOP ELEVATION	PART 77 PENETRATION (ft)	RESOLUTION
(D)	Road	208.0'	3.4'	TBD
(E)	Tree Cluster	213.1'	6.4'	TBD

NOTE:  
 1. Obstruction D and E do not penetrate the existing Runway 8 "Visual" Part 77 20:1 surface. However, these objects would penetrate the Part 77 34:1 surface at such time Runway 8 upgrades to Ultimate non-precision instrument approach.  
 2. All top elevations of road and rail object evaluation points include mobile object clearance heights as defined by 14 CFR Part 77.

  
**YUMA INTERNATIONAL AIRPORT**  
 YUMA COUNTY AIRPORT AUTHORITY  
 YUMA, ARIZONA


APPROVED BY: \_\_\_\_\_  
 Federal Aviation Administration Date: \_\_\_\_\_

REVISION HISTORY			
NO.	DATE	DESCRIPTION	APPD
1	08-16-1992	ALP Update	JPM (FAA)
2	09-14-1992	ALP Update	EMT (YCAA)
3	08-05-2000	ALP Update	DCG (YCAA)
4	08-09-2001	ALP Update	KF (FAA)
5	08-13-2012	ALP Update for Airport Master Plan	CW (YCAA)

THE PREPARATION OF THESE DOCUMENTS WAS FINANCED IN PART THROUGH A PLANNING GRANT FROM THE FEDERAL AVIATION ADMINISTRATION AS PROVIDED UNDER SECTION 505 OF THE AIRPORT AND RUNWAY IMPROVEMENT ACT OF 1982, AS AMENDED. THE CONTENTS DO NOT NECESSARILY REFLECT THE OFFICIAL VIEWS OR POLICY OF THE FAA. ACCEPTANCE OF THESE DOCUMENTS BY THE FAA DOES NOT IN ANY WAY CONSTITUTE A COMMITMENT ON THE PART OF THE UNITED STATES TO PARTICIPATE IN ANY DEVELOPMENT DEPICTED HEREIN NOR DOES IT INDICATE THAT THE PROPOSED DEVELOPMENT IS ENVIRONMENTALLY ACCEPTABLE IN ACCORDANCE WITH APPROPRIATE PUBLIC LAWS.

# APPROACH / DEPARTURE PROFILES RUNWAY 8-26

  
**RICONDO & ASSOCIATES**

  
 TRUE NORTH  
 MAGNETIC NORTH DECLINATION = 11°48'E (JANUARY 2009) Changing by 0.7" W/year

DRAWN BY: EB  
 CHECKED BY: PDH  
 APPROVED BY:   
 Airport Manager Date: August 13, 2012  
 Sheet 5 of 13

Drawing: Z:\YUMALP\_Update\2011\Sheet 5 - Approach 8-26.dwg Layout: 24x36 Aug. 13, 2012, 3:03pm