

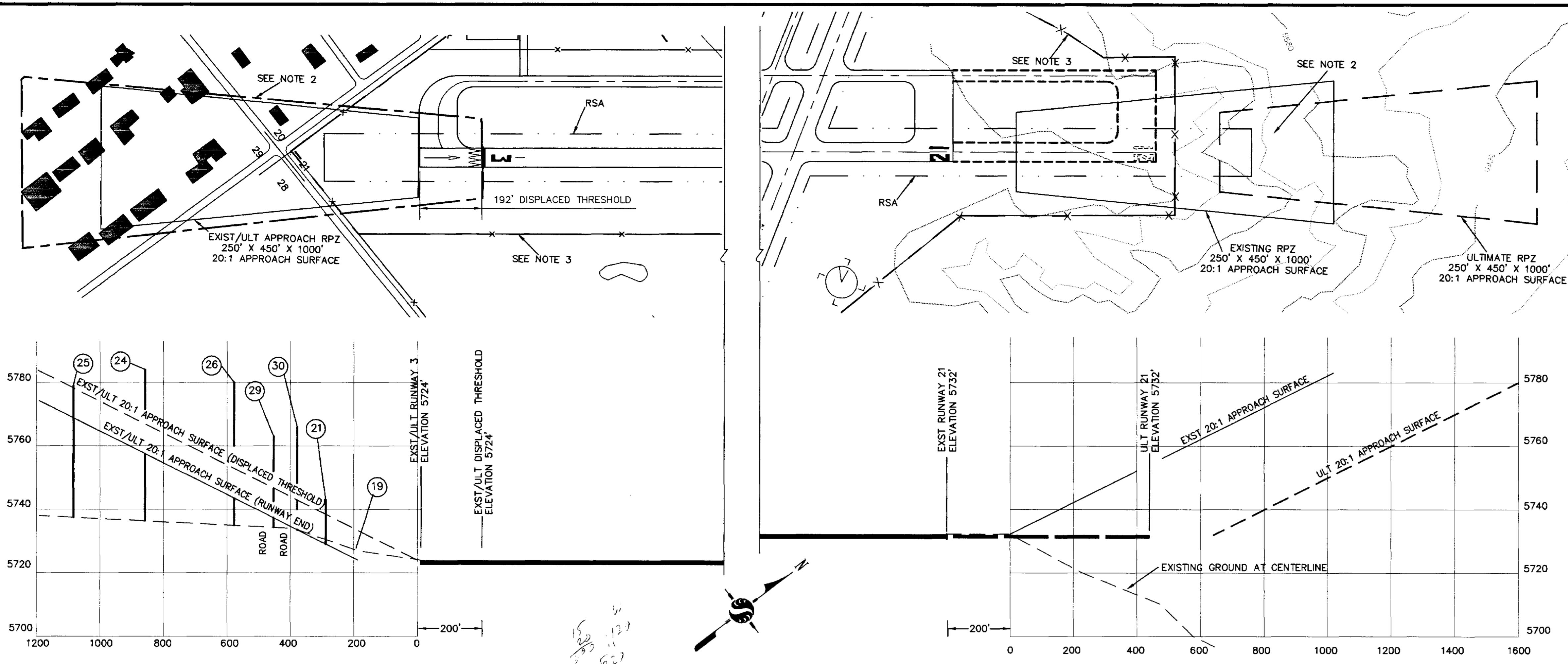
OBSSTRUCTION TABLE

NO.	DESCRIPTION	SURFACE	ELEV# (MSL)	PENETRATION±		DISPOSITION
				EXIST	ULT	
8	ANTENNA	APPROACH	5754	14'	0'	REMAIN
9	TREE	APPROACH	5748	18'	0'	REMOVE
10	POLE	APPROACH	5757	5'	5'	MARK/LIGHT
13	POLE	APPROACH	5768	24'	24'	MARK/LIGHT
14	TREE	APPROACH	5752	15'	0'	REMOVE
19	GROUND	PRIMARY	5727	3'	0'	REMAIN
21	ROAD	APPROACH	5743	14'	14'	REMAIN
24	TREE	APPROACH	5784	26'	0'	REMOVE
25	TREE	APPROACH	5779	10'	0'	REMOVE
26	TREE	APPROACH	5780	36'	0'	REMOVE
29	TREE	APPROACH	5766	33'	0'	REMOVE
30	TREE	APPROACH	5745	25'	0'	REMOVE
34	ROAD	APPROACH	5738	3'	3'	REMAIN
35	POLE	APPROACH	5756	0'	0'	REMAIN
37	ROAD	PRIMARY	5740	8'	8'	REMAIN

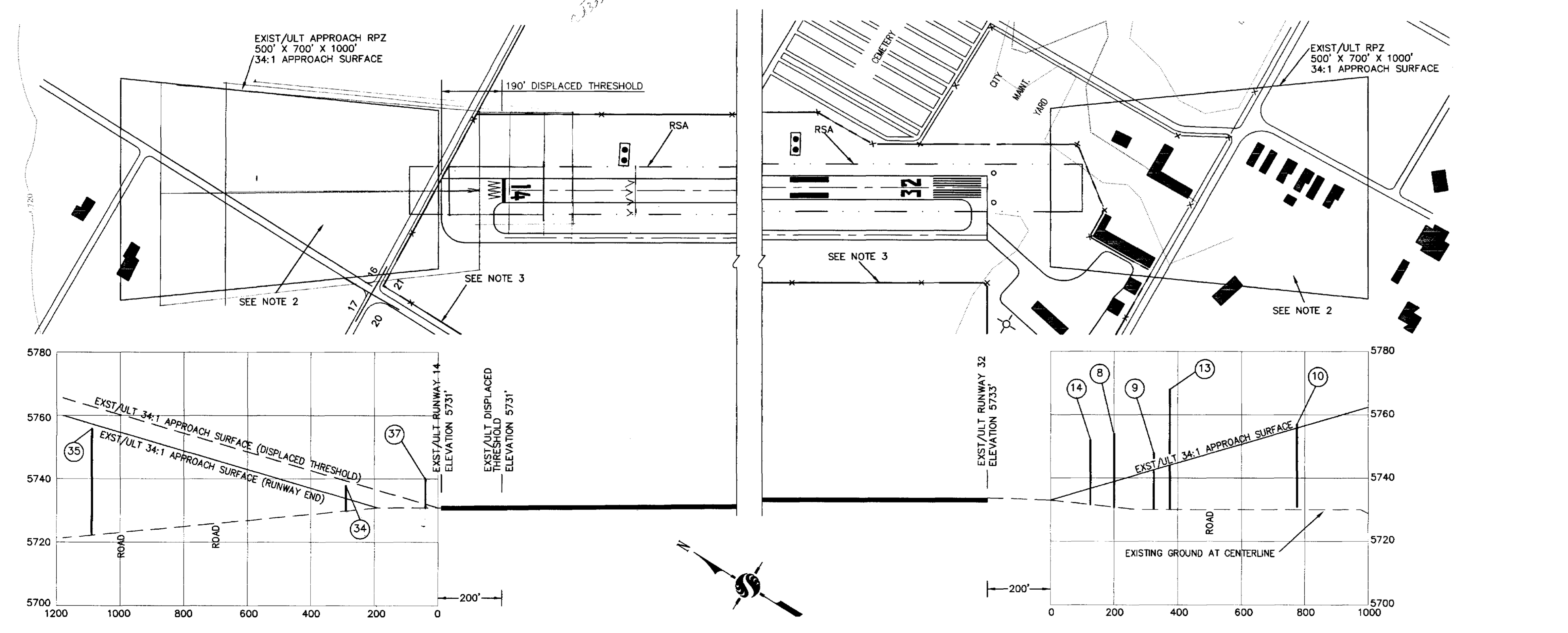
SOURCE: OBSTRUCTION DATA FROM NATIONAL OCEAN SERVICE (NOS) OBSTRUCTION CHART (06586) 1ST EDITION NOVEMBER 1988 (BEST INFORMATION AVAILABLE AT TIME OF RUNWAY PROTECTION ZONES PLAN).

GENERAL NOTE

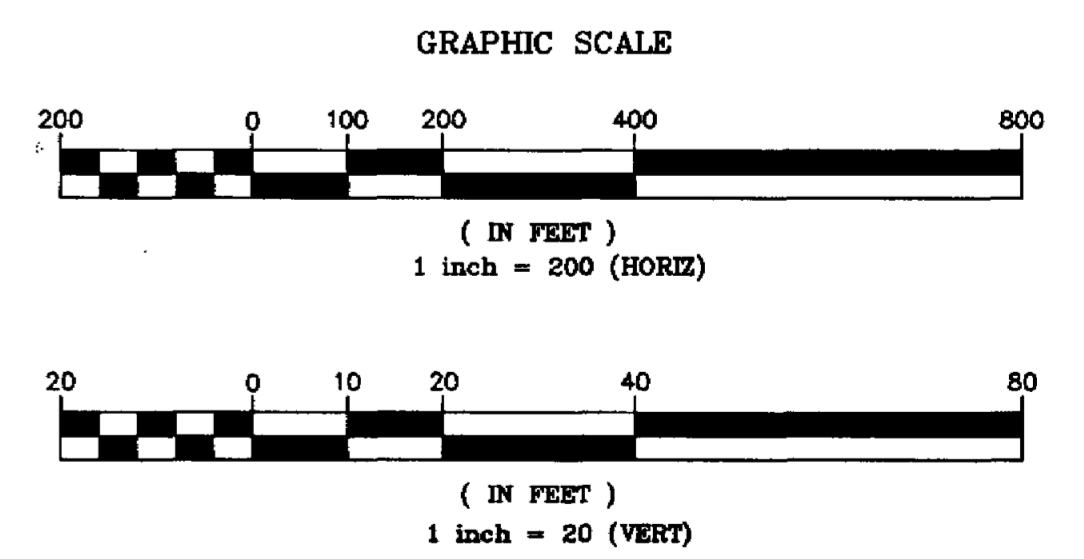
- TERRAIN DATA FROM U.S.G.S. MAPS AND PREVIOUS MASTER PLAN, WHICH WERE THE BEST INFORMATION AVAILABLE AT THE TIME OF THE RUNWAY PROTECTION ZONE PLAN.
- EASEMENT DESCRIPTION FOR RUNWAY 03 WAS PREPARED BY SHREEVE & ASSOCIATES (3/25/99) AND PROVIDED BY CITY OF ST. JOHNS. THE AVIGATION EASEMENTS ARE CURRENTLY UNDER REVIEW AND THE DEPICTED EASEMENT MAY NOT ACCURATELY REFLECT THE EXISTING SITUATION AT THE AIRPORT. THE NEED FOR FUTURE AVIGATION EASEMENTS WILL BE CONSIDERED DURING THE REVIEW PROCESS.
- AIRPORT PROPERTY LINE DATA (PROVIDED BY CITY OF ST. JOHNS) IS CURRENTLY BEING RE-DEFINED. THUS, DEPICTED PROPERTY LINES MAY NOT ACCURATELY REFLECT THE EXISTING SITUATION AT THE AIRPORT.



RUNWAY 3-21



RUNWAY 14-32



ST. JOHNS INDUSTRIAL AIR PARK
 RUNWAY PROTECTION ZONES PLAN
 ST. JOHNS, ARIZONA