

AIRPORT DATA

SELIGMAN AIRPORT (P23)	
CITY: SELIGMAN, ARIZONA	COUNTY: YAVAPAI, ARIZONA
RANGE: 6W	TOWNSHIP: 23N
	CIVIL TOWNSHIP: N/A
EXISTING	ULTIMATE
DESIGN AIRCRAFT: CESSNA 421	SUPER KINGAIR 200
AIRPORT REFERENCE CODE: B-I	B-II
AIRPORT ELEVATION: 5,238'	SAME
MEAN MAXIMUM TEMPERATURE OF HOTTEST MONTH: 91.8° (JULY)	SAME
AIRPORT REFERENCE POINT (ARP) COORDINATES: NAD 1983 Latitude: 35°20'06.262" N Longitude: 112°53'11.393" W	35°20'11.800" N 112°53'02.212" W
AIRPORT and TERMINAL NAVIGATIONAL AIDS	SEGMENTED CIRCLE SEGMENTED CIRCLE ROTATING BEACON ROTATING BEACON

RUNWAY DATA

RUNWAY 4-22	
EXISTING	ULTIMATE
RUNWAY CATEGORY/AIRCRAFT DESIGN GROUP: B-I	B-II
CRITICAL DESIGN AIRCRAFT: CULFSTREAM IV	G-IV/DASH 8
WINGSPAN OF DESIGN AIRCRAFT: 77.8'	90.0'
APPROACH SPEED OF DESIGN AIRCRAFT (KNOTS): 76	103
MAXIMUM TAKE OFF WEIGHT (lbs): 7,450	12,500
RUNWAY DIMENSIONS: 53.0167	SAME
RUNWAY BEARING (TRUE): N53°0'32.231"E	SAME
RUNWAY DIMENSIONS: 4,800' x 75'	6,700' x 75'
ELEVATION OF RWY TOUCH DOWN ZONE (MSL): 5,237.80'	5,237.80' / 5,226.82'
ELEVATION OF RUNWAY HIGH POINT (above MSL): 5,237.80'	SAME
ELEVATION OF RUNWAY LOW POINT (above MSL): 5,226.82'	5,225.0'
WIND COVERAGE IN MPH: 12.1-96.59%/15-96.59%	1/2 MILE/1/2 MILE
APPROACH VISIBILITY MINIMUMS: 1 MILE/1 MILE	SAME
FAR PART 77 CATEGORY: VISUAL/VISUAL	SAME
RUNWAY INSTRUMENTATION: VISUAL/VISUAL	SAME
RUNWAY APPROACH SURFACES: 20:1/20:1	SAME
RUNWAY THRESHOLD DISPLACEMENT: NONE	NONE
RUNWAY STOPWAY: NONE	NONE
RUNWAY SAFETY AREA WIDTH (RSA): 120'	150'
RSA DISTANCE BEYOND EACH RUNWAY END: 240'	300'
RUNWAY OBJECT FREE AREA WIDTH (OFA): 400'	500'
OFA DISTANCE BEYOND EACH RUNWAY END: 240'	300'
RUNWAY OBSTACLE FREE ZONE WIDTH (OFZ): 400'	400'
OFZ DISTANCE BEYOND EACH RUNWAY END: 200'	200'
LINE OF SITE REQUIREMENT: NO	SAME
RUNWAY PAVEMENT MATERIAL: ASPHALT	SAME
RUNWAY PAVEMENT SURFACE TREATMENT: NONE	SAME
PAVEMENT STRENGTH (in thousand lbs.): 12.5(S)	SAME
RUNWAY EFFECTIVE GRADIENT (in %): 0.23%	0.13%
MAXIMUM GRADIENT (in %): 35%	SAME
RUNWAY LIGHTING: MRL	SAME
RUNWAY MARKINGS: VISUAL/VISUAL	SAME
RUNWAY APPROACH LIGHTING: NONE	SAME
TAXIWAY PAVEMENT MATERIAL: ASPHALT	SAME
TAXIWAY LIGHTING: MTL	SAME
TAXIWAY MARKING: CENTERLINE	SAME
DISTANCE FROM RWY CL TO HOLD LINES: 120'/100'	200'
NAVIGATIONAL AIDS: PAPI-2	SAME
	WIND SOCK SEGMENTED CIRCLE REL

RUNWAY END COORDINATES NAD 1983	
EXISTING	ULTIMATE
RUNWAY 4 Latitude: 35°19'51.97359" N Longitude: 112°53'34.51442" W	SAME SAME
RUNWAY 22 Latitude: 35°20'20.52810" N Longitude: 112°52'48.25104" W	35°19'51.9740" N 112°53'34.5140" W

DEVIATIONS FROM FAA AIRPORT DESIGN STANDARDS

DEVIATION DESCRIPTION	EFFECTED DESIGN STANDARD	STANDARD	EXISTING	PROPOSED DISPOSITION
Drainage Ditch in Approach 22 RSA	Runway Safety Area (RSA)	240'	120'	Replace ditch with culvert
10' Perimeter Fence in Approach 22 RSA	Object Free Area/OFZ	240'	199'	Relocate after land acquisition
10' Perimeter Fence in Rwy. 4-22 OFA	Object Free Area	240'	150'	Relocate after land acquisition

BUILDINGS/FACILITIES

EXISTING	ULTIMATE	DESCRIPTION	EL.
①	---	ELECTRIC FAULT/ROTATING BEACON	5248
②	---	STORAGE SHED	---
③	---	RESTROOMS	5230
---	---	TERMINAL BUILDING	---
---	---	CONVENTIONAL HANGARS	---
---	---	T-HANGARS	---
---	---	EXECUTIVE HANGARS	---
---	---	FUEL FARM	---
---	---	WASH RACK	---

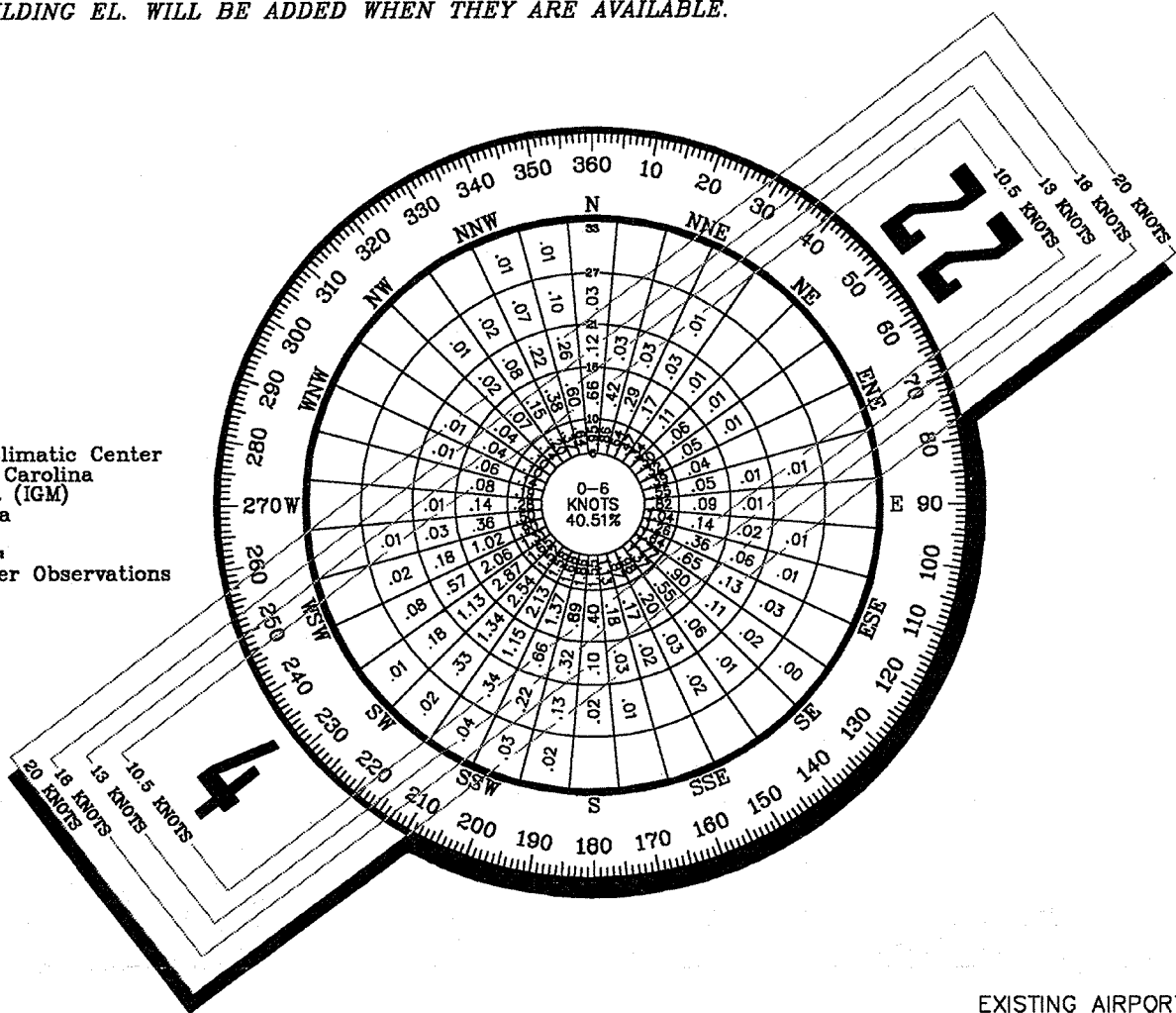
NOTE: BUILDING EL. WILL BE ADDED WHEN THEY ARE AVAILABLE.

OBSTACLE FREE ZONE (OFZ) OBJECT PENETRATIONS

OBJECT	PENETRATION	DISPOSITION
10' FENCE RWY. 22	10'	Relocate after land acquisition

THRESHOLD SITING SURFACE OBJECT PENETRATIONS

OBJECT	PENETRATION	DISPOSITION
FENCE RWY. 4	6'	Relocate Fence
FENCE RWY. 22	6'	Relocate Fence



SOURCE:
NOAA National Climatic Center
Asheville, North Carolina
Kingman Airport (IGM)
Kingman, Arizona

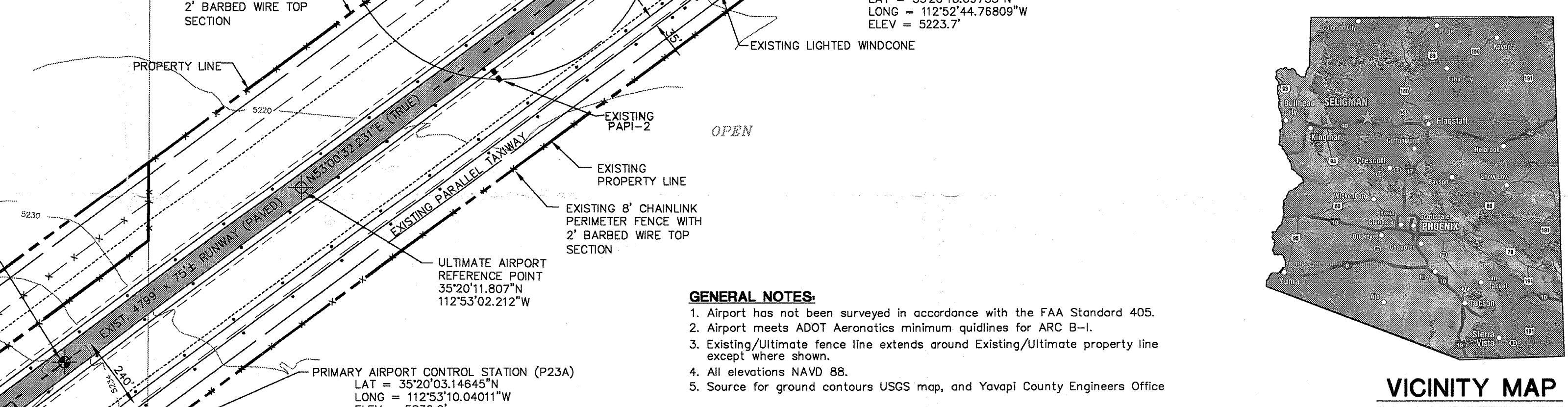
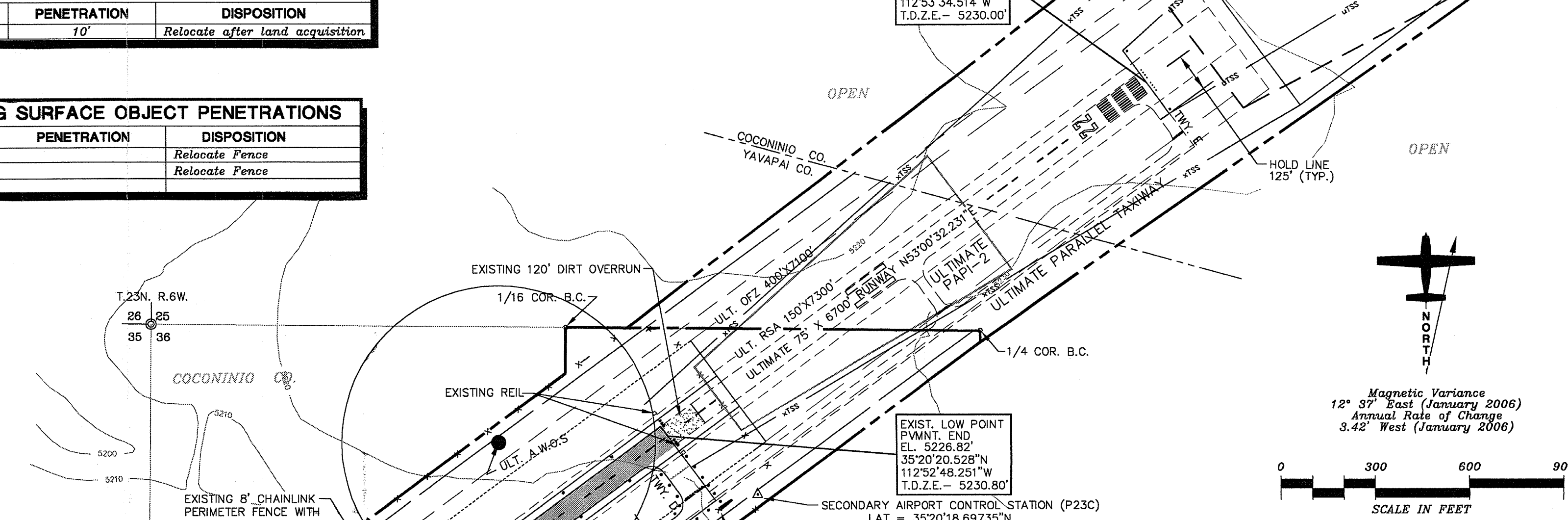
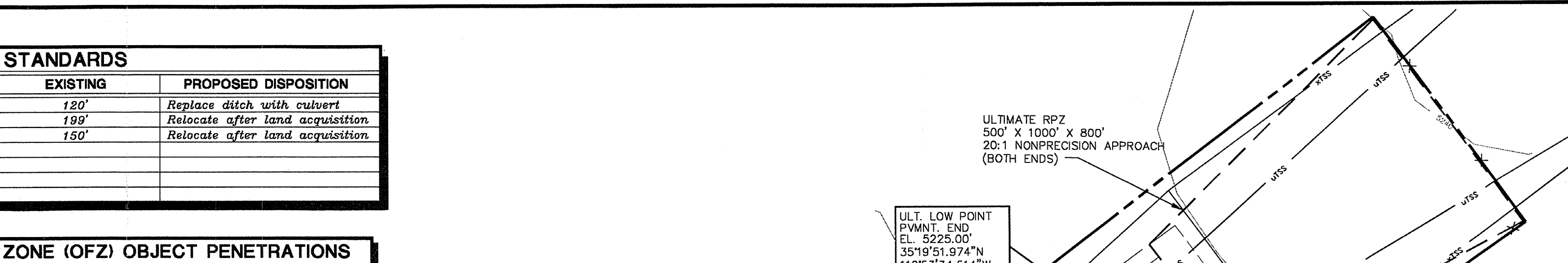
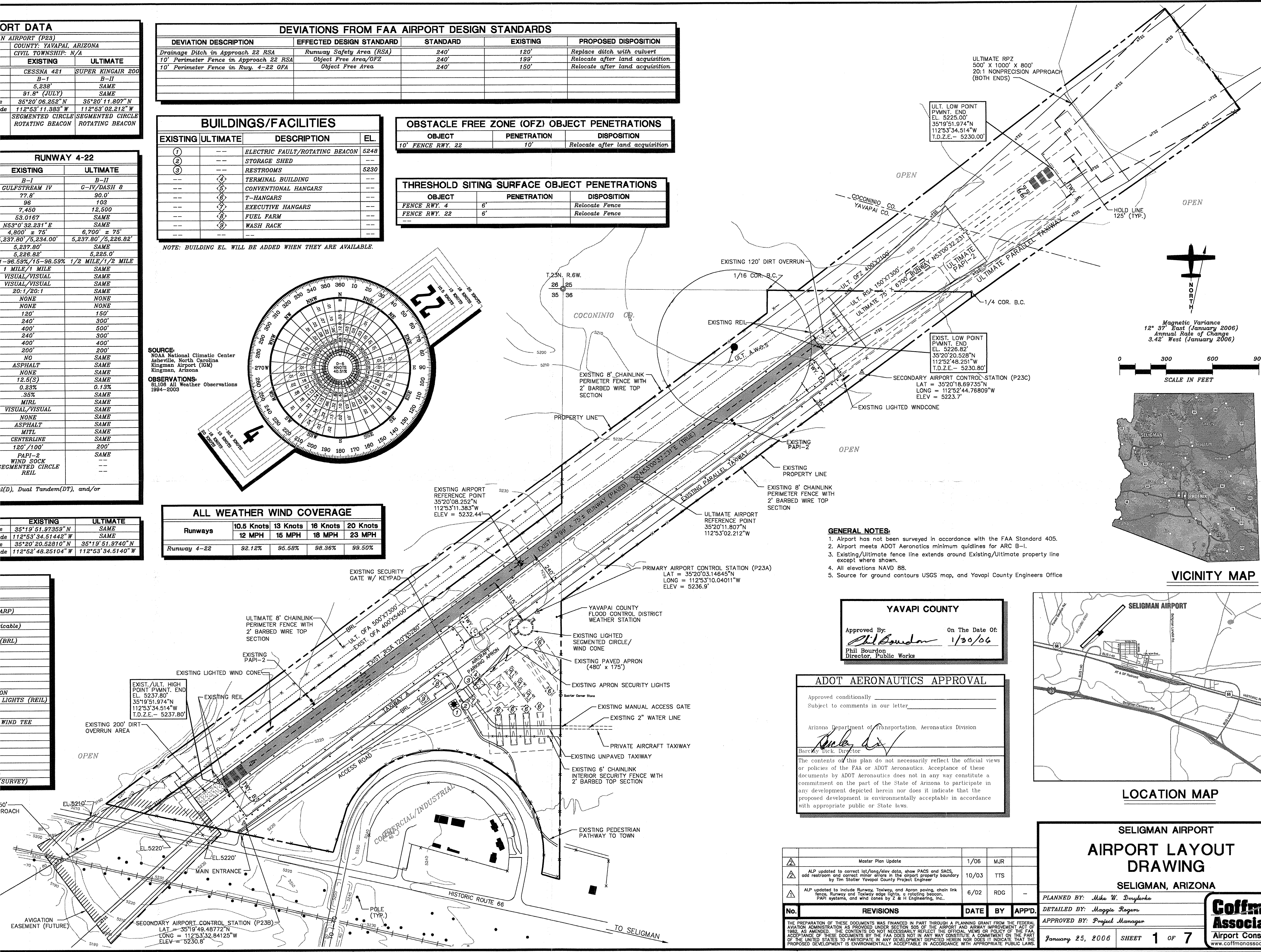
OBSERVATIONS:
All Weather Observations
1984-2003

ALL WEATHER WIND COVERAGE

Runways	10.5 Knots 12 MPH	13 Knots 15 MPH	16 Knots 18 MPH	20 Knots 23 MPH
Runway 4-22	92.12%	95.58%	98.36%	99.50%

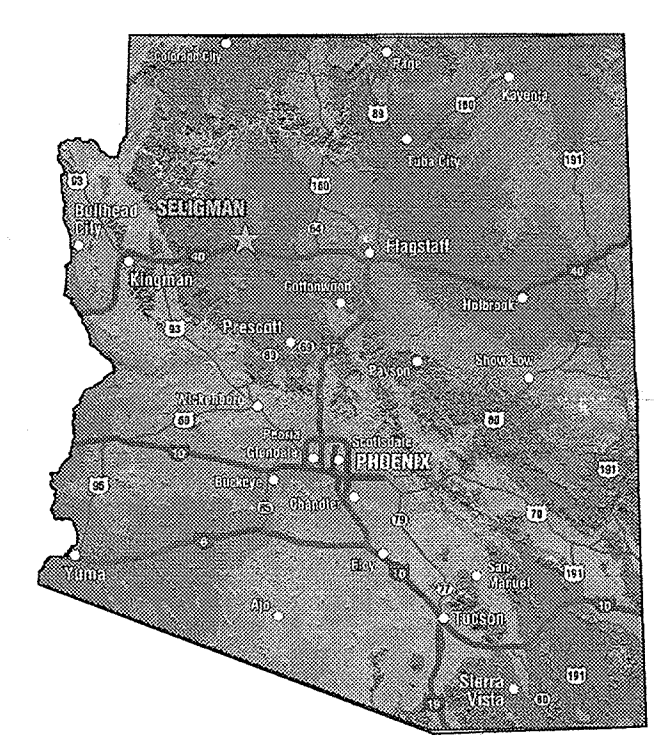
LEGEND

EXISTING	ULTIMATE	DESCRIPTION
[Symbol]	[Symbol]	AIRPORT PROPERTY LINE
[Symbol]	[Symbol]	AIRPORT REFERENCE POINT (ARP)
[Symbol]	[Symbol]	AIRPORT ROTATING BEACON
[Symbol]	[Symbol]	AVIGATION EASEMENT (if applicable)
[Symbol]	[Symbol]	BUILDING CONSTRUCTION
[Symbol]	[Symbol]	BUILDING RESTRICTION LINE (BRL)
[Symbol]	[Symbol]	OBJECT FREE AREA (OFA)
[Symbol]	[Symbol]	RUNWAY SAFETY AREA (RSA)
[Symbol]	[Symbol]	OBSTACLE FREE ZONE (OFZ)
[Symbol]	[Symbol]	DRAINAGE
[Symbol]	[Symbol]	FACILITY CONSTRUCTION
[Symbol]	[Symbol]	FENCING
[Symbol]	[Symbol]	NAVIGATIONAL AID INSTALLATION
[Symbol]	[Symbol]	RUNWAY END IDENTIFICATION LIGHTS (REL)
[Symbol]	[Symbol]	RUNWAY THRESHOLD LIGHTS
[Symbol]	[Symbol]	SECTION CORNER
[Symbol]	[Symbol]	SEGMENTED CIRCLE/LIGHTED WIND TEE
[Symbol]	[Symbol]	TOPOGRAPHIC CONTOURS
[Symbol]	[Symbol]	WIND INDICATOR (Lighted)
[Symbol]	[Symbol]	POWER POLE
[Symbol]	[Symbol]	TAXIWAY DESIGNATION
[Symbol]	[Symbol]	DIRT ROADS
[Symbol]	[Symbol]	RUNWAY EDGE LIGHTING
[Symbol]	[Symbol]	PAVEMENT TO BE ABANDONED
[Symbol]	[Symbol]	AIRPORT CONTROL STATIONS (SURVEY)



Magnetic Variance
12° 37' East (January 2006)
Annual Rate of Change
3.42' West (January 2006)

SCALE IN FEET
0 300 600 900



VICINITY MAP

GENERAL NOTES:

- Airport has not been surveyed in accordance with the FAA Standard 405.
- Airport meets ADOT Aeronautics minimum guidelines for ARC B-I.
- Existing/Ultimate fence line extends around Existing/Ultimate property line except where shown.
- All elevations NAVD 88.
- Source for ground contours USGS map, and Yavapai County Engineers Office.

YAVAPAI COUNTY

Approved By: *Phil Bourdon*
On The Date Of: 1/30/06
Phil Bourdon
Director, Public Works

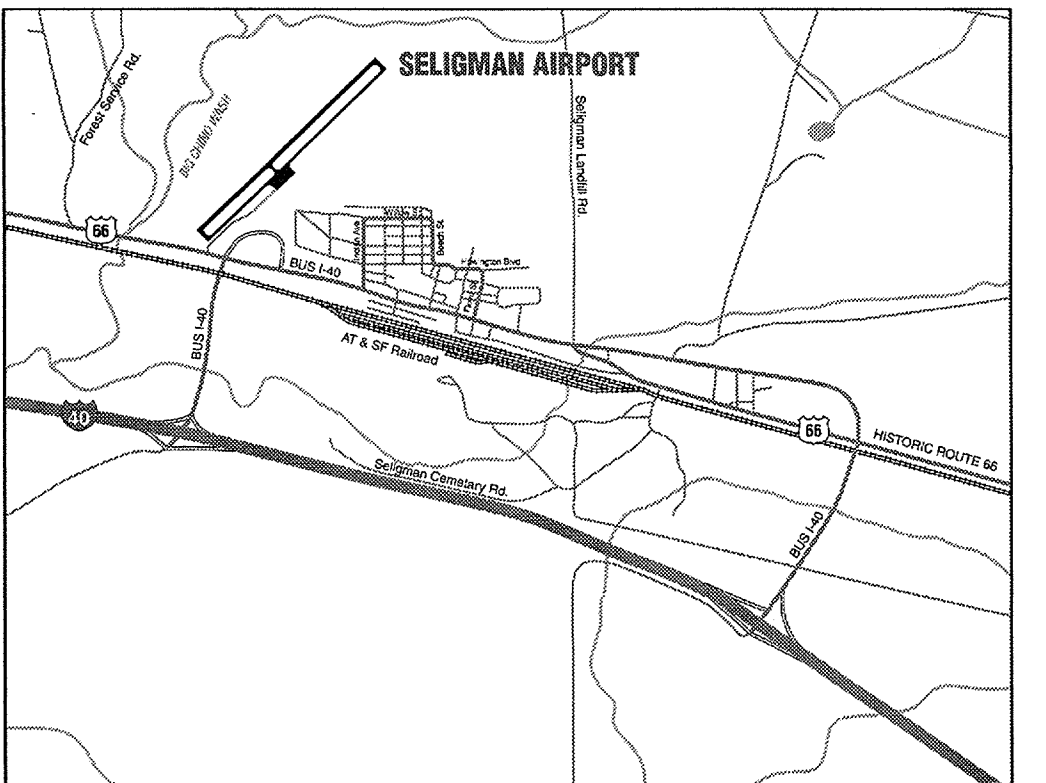
ADOT AERONAUTICS APPROVAL

Approved conditionally _____
Subject to comments in our letter _____

Arizona Department of Transportation, Aeronautics Division

Bareky Dick
Bareky Dick, Director

The contents of this plan do not necessarily reflect the official views or policies of the FAA or ADOT Aeronautics. Acceptance of these documents by ADOT Aeronautics does not in any way constitute a commitment on the part of the State of Arizona to participate in any development depicted herein nor does it indicate that the proposed development is environmentally acceptable in accordance with appropriate public or State laws.



LOCATION MAP

SELIGMAN AIRPORT
AIRPORT LAYOUT
DRAWING
SELIGMAN, ARIZONA

PLANNED BY: Mike W. Dmyshko
DETAILED BY: Maggie Rogers
APPROVED BY: Project Manager



January 25, 2006 SHEET 1 OF 7

No.	REVISIONS	DATE	BY	APPD.
	Master Plan Update	1/06	MJR	
	ALP updated to correct lat/long/elew data, show PACS and SACS, add restroom and correct minor errors in the airport property boundary by Tim Stotler Yavapai County Project Engineer	10/03	TTS	
	ALP updated to include Runway, Taxiway, and Apron paving, chain link fence, Runway and Taxiway edge lights, a rotating beacon, PAPI systems, and wind cones by Z & H Engineering, Inc.	6/02	RDG	

THE PREPARATION OF THESE DOCUMENTS WAS FINANCED IN PART THROUGH A PLANNING GRANT FROM THE FEDERAL AVIATION ADMINISTRATION AS PROVIDED UNDER SECTION 805 OF THE AIRPORT AND AIRWAY IMPROVEMENT ACT OF 1986, AS AMENDED. THE CONTENTS DO NOT NECESSARILY REFLECT THE OFFICIAL VIEWS OR POLICY OF THE FAA. ACCEPTANCE OF THESE DOCUMENTS BY THE FAA DOES NOT IN ANY WAY CONSTITUTE A COMMITMENT ON THE PART OF THE UNITED STATES TO PARTICIPATE IN ANY DEVELOPMENT DEPICTED HEREIN NOR DOES IT INDICATE THAT THE PROPOSED DEVELOPMENT IS ENVIRONMENTALLY ACCEPTABLE IN ACCORDANCE WITH APPROPRIATE PUBLIC LAWS.