

RUNWAY DATA	RUNWAY 3-21			
	EXISTING		ULTIMATE	
	3	21	3	21
RUNWAY DESIGN CODE (RDC)	B-II-6000		SAME	
APPROACH REFERENCE CODE	B/III/5000		SAME	
DEPARTURE REFERENCE CODE	B/II		SAME	
RUNWAY AZIMUTH (TRUE)	45.76°	225.77°	SAME	SAME
RUNWAY BEARING (TRUE)	N 45.76° E		SAME	SAME
APPROACH TYPE	GPS NON-PREC	VISUAL	GPS LPV	GPS NON-PREC
PART 77 APPROACH CATEGORY	34.1	20.1	SAME	34.1
APPROACH VISIBILITY MINIMUMS	1.5 MILE	VISUAL	> 3/4 MILE	1 MILE GREATER
RUNWAY DEPARTURE SURFACE	40.1	40.1	SAME	SAME
TYPE OF AERONAUTICAL SURVEY REQUIRED	NON-VERTICALLY GUIDED		VERTICALLY GUIDED	
THRESHOLD SITING SURFACE	20.1	20.1	SAME	SAME
DESIGN AIRCRAFT	CESSNA CITATION 560XL		SAME	
DESIGN AIRCRAFT UNDERCARRIAGE WIDTH (FEET)	13.66'		SAME	
DESIGN AIRCRAFT WINGSPAN	77.83'		SAME	
DESIGN AIRCRAFT TAIL HEIGHT	24.42'		SAME	
RUNWAY LENGTH	5132'		SAME	
RUNWAY WIDTH	100'		SAME	
PERCENT OF WIND COVERAGE	10.5 knots 13 knots 16 knots	94.84% 97.28% 99.08%	SAME	SAME
RUNWAY END ELEVATION 1	4736.1'	4830.4'	SAME	SAME
TOUCH DOWN ZONE ELEVATION 1	4792.9'	4830.4'	SAME	SAME
DISPLACED THRESHOLD 1	NONE	NONE	SAME	SAME
EFFECTIVE RUNWAY GRADIENT	1.8%		SAME	
MAXIMUM GRADIENT	2.0%		SAME	
RUNWAY SURFACE TYPE	ASPHALT		SAME	
RUNWAY PAVEMENT STRENGTH (in thousand lbs.) ²	15(S,30(D)		SAME	
RUNWAY SURFACE TREATMENT	NONE		NONE	
RUNWAY LIGHTING	MIRL	MIRL	SAME	SAME
RUNWAY MARKING	VISUAL	VISUAL	NON-PREC	NON-PREC
VISUAL AND NAVIGATIONAL AIDS	AWOS BEACON REILs PAPI-4s GPS		SAME SAME SAME SAME SAME	
RUNWAY SAFETY AREA BEYOND STOP END	300'	300'	SAME	SAME
RUNWAY SAFETY AREA WIDTH	150'		SAME	
OBJECT FREE AREA BEYOND STOP END	300'	300'	SAME	SAME
OBJECT FREE AREA WIDTH	500'		SAME	
OBSTACLE FREE ZONE BEYOND STOP END (ACTUAL)	200'	200'	SAME	SAME
OBSTACLE FREE ZONE WIDTH	400'		SAME	
RUNWAY PROTECTION ZONE	500'x700' x1000'	800'x700' x1000'	1000'x1700' x1510'	SAME
TAXIWAY DESIGN GROUP (TDG)	TDG-2		SAME	
TAXIWAY WIDTH	35'		SAME	
TAXIWAY OBJECT FREE AREA WIDTH	131'		SAME	
TAXIWAY SAFETY AREA WIDTH	79'		SAME	
TAXIWAY WING TIP CLEARANCE	26'		SAME	
TAXIWAY CL TO FIXED OR MOVEABLE OBJECT	65.5'		SAME	
TAXIWAY LIGHTING	MITL		SAME	
TAXIWAY SURFACE MATERIAL	ASPHALT		SAME	
TAXIWAY TO RUNWAY SEPARATION	250'		SAME	
HOLDBAR TO RUNWAY CENTERLINE DISTANCE	135'	200'		
TAXIWAY TO AIRCRAFT PARKING DISTANCE	100'		SAME	
RUNWAY CENTERLINE TO AIRCRAFT PARKING	313' (250' standard)		SAME	
THRESHOLD SITING SURFACE OBJECT PENETRATIONS	NONE		SAME	

NOTES:
1. RUNWAY END ELEVATIONS, COORDINATES, DISTANCES, AND BEARING NOTED IN THIS ALP ARE FROM THE AVN DATASHEET.
2. SW-SINGLE WHEEL, DW-DUAL WHEEL.

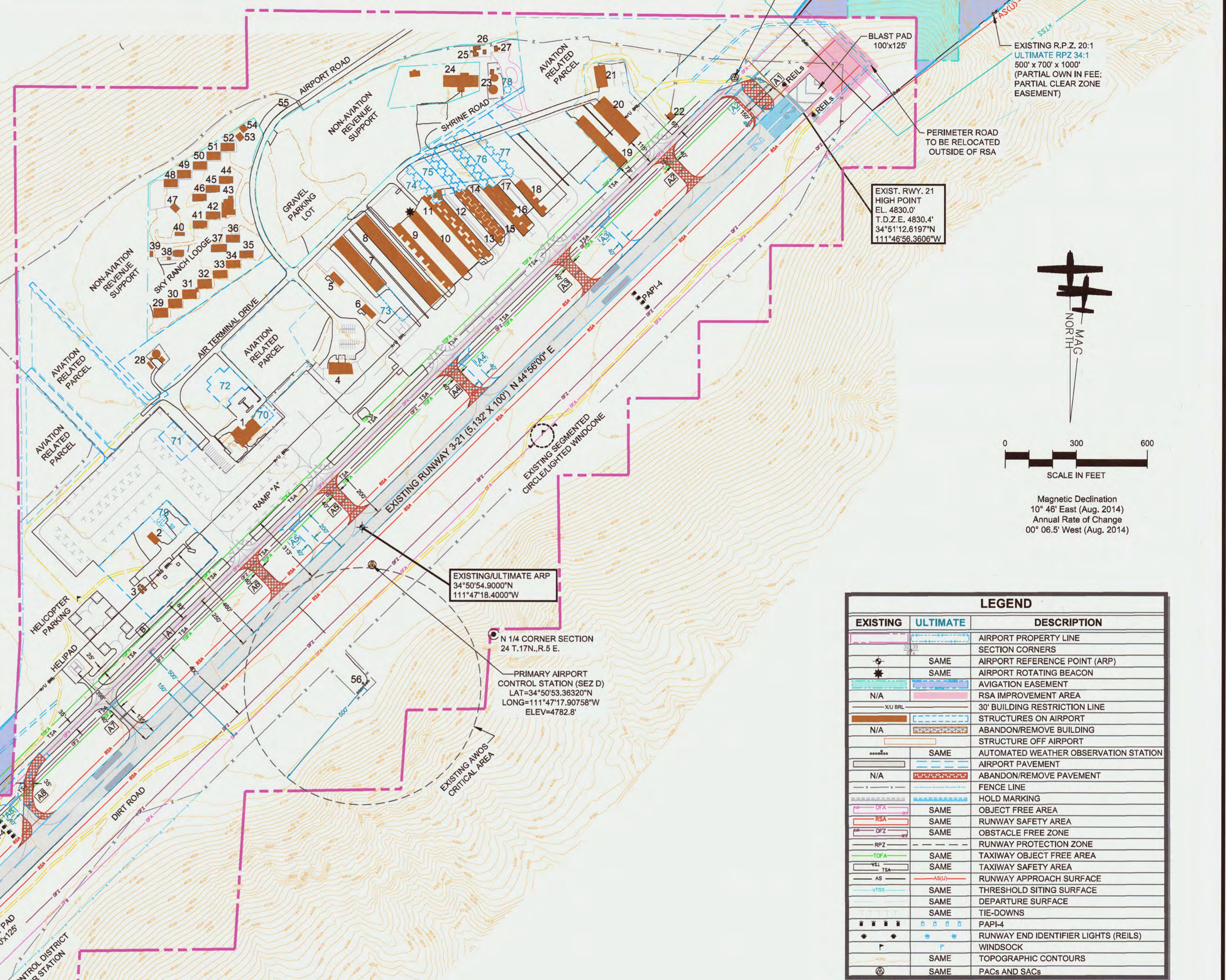
AIRPORT DATA			
SEDONA AIRPORT (SEZ)			
CITY:	SEDONA, ARIZONA	COUNTY:	YAVAPAI COUNTY, ARIZONA
RANGE:	---	TOWNSHIP:	---
		CIVIL TOWNSHIP:	N/A
		EXISTING	ULTIMATE
NPIAS SERVICE LEVEL		GENERAL AVIATION	SAME
STATE SERVICE ROLE		GENERAL AVIATION	SAME
CRITICAL DESIGN AIRCRAFT		CESSNA CITATION 560XL	SAME
AIRCRAFT REFERENCE CODE (ARC)		B-II	SAME
AIRCRAFT ELEVATION (ABOVE MEAN SEA LEVEL)		4830.4'	SAME
MEAN MAXIMUM TEMPERATURE OF HOTTEST MONTH		96.1°F (July)	SAME
AIRCRAFT REFERENCE POINT (ARP) COORDINATES (NAD 83)		Latitude: 34°50'54.9000"N Longitude: 111°47'18.4000"W	SAME
AIRCRAFT INSTRUMENT NAVIGATIONAL AIDS		GPS (1.5 MILE)	SAME
MISCELLANEOUS FACILITIES (OWNERSHIP)		AIRCRAFT BEACON PAPI-4s (STATE) LIGHTED WIND CONE AWOS MITL (STATE)	SAME SAME SAME SAME SAME

RUNWAY END COORDINATES (NAD 83)			
	EXISTING	ULTIMATE	
RUNWAY 3	Latitude: 34°50'37.2207"N Longitude: 111°47'40.4567"W	SAME	
RUNWAY 21	Latitude: 34°51'12.6197"N Longitude: 111°46'56.3606"W	SAME	

EXISTING AIRPORT FACILITIES					
NO.	DESCRIPTION	ELEV. (MSL)	NO.	DESCRIPTION	ELEV. (MSL)
1	TERMINAL	4808.72'	30	SKY RANCH LODGE BUILDING	4808.85'
2	MAINTENANCE EQUIPMENT HUT	4787.27'	31	SKY RANCH LODGE BUILDING	4809.57'
3	FUEL FARM (TO BE RELOCATED)	4787.27'	32	SKY RANCH LODGE BUILDING	4811.10'
4	MESA GRILL	4811.98'	33	SKY RANCH LODGE BUILDING	4802.93'
5	ARIZONA HELICOPTER ADV.	4807.01'	34	SKY RANCH LODGE BUILDING	4803.59'
6	SKY SAFARI	4805.72'	35	SKY RANCH LODGE BUILDING	4805.51'
7	CORPORATE HANGARS	4817.96'	36	SKY RANCH LODGE BUILDING	4804.83'
8	CORPORATE HANGARS	4824.08'	37	SKY RANCH LODGE BUILDING	4803.81'
9	T-HANGARS	4816.08'	38	SKY RANCH LODGE BUILDING	4799.18'
10	T-HANGARS	4820.11'	39	SKY RANCH LODGE BUILDING	4794.42'
11	T-HANGARS	4815.86'	40	SKY RANCH LODGE BUILDING	4799.46'
12	T-HANGARS	4819.10'	41	SKY RANCH LODGE BUILDING	4803.61'
13	T-HANGARS	4820.98'	42	SKY RANCH LODGE BUILDING	4804.29'
14	T-HANGARS	4819.53'	43	SKY RANCH LODGE BUILDING	4803.58'
15	T-HANGARS	4822.42'	44	SKY RANCH LODGE BUILDING	4803.68'
16	CIVIL AIR PATROL	4822.54'	45	SKY RANCH LODGE BUILDING	4803.68'
17	T-HANGARS	4822.40'	46	SKY RANCH LODGE BUILDING	4802.65'
18	T-HANGARS	4824.02'	47	SKY RANCH LODGE BUILDING	4799.46'
19	CORPORATE HANGARS	4837.67'	48	SKY RANCH LODGE BUILDING	4788.77'
20	CORPORATE HANGARS	4844.17'	49	SKY RANCH LODGE BUILDING	4799.52'
21	CORPORATE HANGARS	4837.98'	50	SKY RANCH LODGE BUILDING	4803.68'
22	OFFICE BUILDING	4837.98'	51	SKY RANCH LODGE BUILDING	4802.11'
23	WATER TANKS	4831.38'	52	SKY RANCH LODGE BUILDING	4803.61'
24	MASONIC LODGE	4829.68'	53	SKY RANCH LODGE BUILDING	4805.04'
25	YAVAPAI COUNTY SHERIFFS	4882.64'	54	SKY RANCH LODGE BUILDING	4804.76'
26	FIRE DEPARTMENT	4822.67'	55	SCENIC OVERLOOK	4791.00'
27	COMMUNICATIONS TOWER	4902.44'	56	AWOS	
28	WATER TANK	4830.41'	57	WEATHER STATION	44756.00'
29	SKY RANCH LODGE BUILDING	4807.15'			

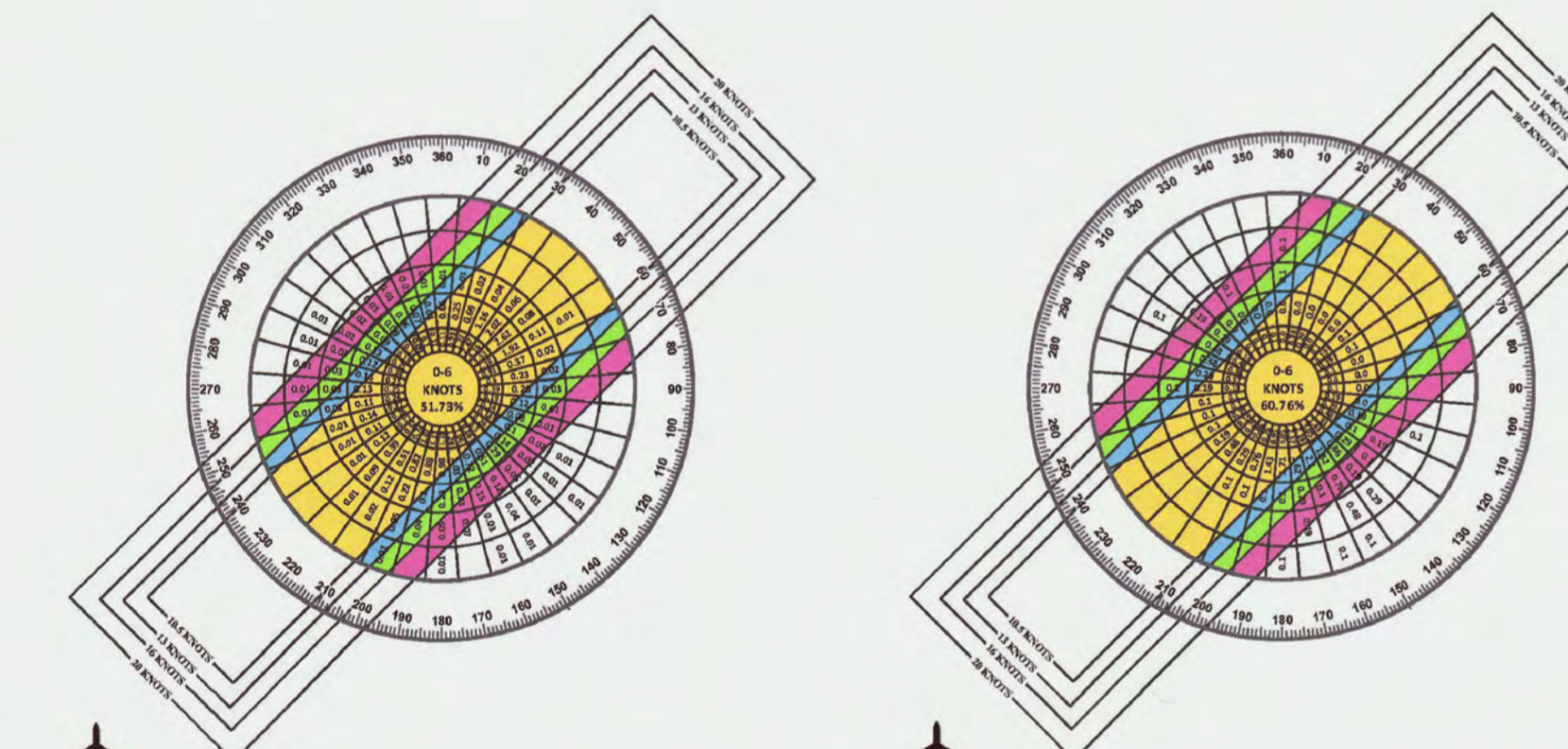
ULTIMATE AIRPORT FACILITIES		
NO.	DESCRIPTION	ELEV. (MSL)
70	TERMINAL EXPANSION	44809'
71	MAINTENANCE FACILITY	N/A
72	VEHICLE PARKING	N/A
73	CORPORATE HANGAR	44817'
74	T-HANGARS	44819'
75	T-HANGARS	44819'
76	T-HANGARS	44819'
77	T-HANGARS	44819'
78	FIRE SUPPRESSION WATER TANK (SEE NOTE #5)	44831'
79	FUEL FARM	44787'

DEVIATIONS TO STANDARDS			
DEVIATION DESCRIPTION	EFFECTED DESIGN STANDARD	EXISTING	PROPOSED DISPOSITION
EXISTING RSA GRADE DEVIATION	FAA RSA GRADE STANDARD NOT TO EXCEED -3.0% BEYOND RWY ENDS	EXCEEDS FAA RSA GRADE STANDARDS	FILL AND GRADE THE RSA TO WITHIN FAA RSA GRADE STANDARDS (SEE NOTE #7)
EXISTING RSA AND OFA OBSTRUCTIONS	FAA RSA AND OFA DESIGN STANDARDS	EXISTING PERIMETER FENCING, SERVICE ROAD, AND OVER GROWN VEGETATION WITHIN RSA AND OFA	RELOCATE PERIMETER FENCE SERVICE ROAD, FROM RSA AND REMOVE OVER GROWN VEGETATION FROM RSA AND OFA
EXISTING HOLD POSITION MARKINGS	FAA DESIGN STANDARD IS 200' FROM RUNWAY CENTERLINE	EXISTING MARKINGS ARE AT 135' FROM RUNWAY CENTERLINE	RELOCATE HOLD POSITION MARKINGS TO 200' FROM RUNWAY CENTERLINE



ALL WEATHER WIND COVERAGE				
Runway	10.5 Knots	13 Knots	16 Knots	20 Knots
Runway 03-21	94.84%	97.28%	99.08%	99.19%

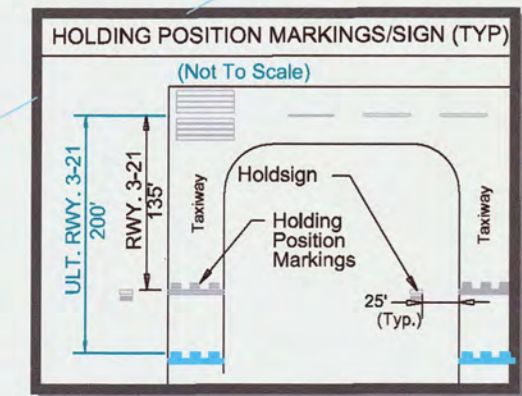
IFR WIND COVERAGE				
Runway	10.5 Knots	13 Knots	16 Knots	20 Knots
Runway 03-21	88.76%	94.09%	95.07%	98.34%



SOURCE: NOAA National Climatic Center, Asheville, North Carolina, Sedona Airport, Sedona, AZ
OBSERVATIONS: 127 860 All Weather Observations 2009-2014
Magnetic Declination: 10° 46' East (Aug. 2014), Annual Rate of Change: 00° 06.5' West (Aug. 2014)

DECLARED DISTANCES	RUNWAY			
	EXISTING 3	EXISTING 21	ULTIMATE 3	ULTIMATE 21
TAKEOFF RUN AVAILABLE (TORA)	5,132'	5,132'	5,132'	5,132'
TAKEOFF DISTANCE AVAILABLE (TODA)	5,132'	5,132'	5,132'	5,132'
ACCELERATE-STOP DISTANCE AVAILABLE (ASDA)	5,132'	5,132'	5,132'	5,132'
LANDING DISTANCE AVAILABLE (LDA)	5,132'	5,132'	5,132'	5,132'

TAXIWAY DESIGN GROUP				
EXISTING	TDG	ULTIMATE	TDG	
TWY A1	150'	TDG-2	40'	TDG-2
TWY A	35'	TDG-2	35'	TDG-2
TWY A2-A7	40'	TDG-2	40'	TDG-2
TWY A8	35'	TDG-2	40'	TDG-2
TWY A9	0'	TDG-2	40'	TDG-2
TWY B	25'	TDG-2	25'	TDG-2



- NOTES:
1. HORIZONTAL DATUM: NORTH AMERICAN DATUM 1983-NAD83; VERTICAL DATUM: NORTH AMERICAN DATUM 1988 - NAVD88.
2. RUNWAY END ELEVATIONS, COORDINATES, DISTANCES, AND BEARING NOTED IN THIS ALP ARE FROM THE AVN DATASHEET.
3. UNLESS NOTED OTHERWISE, EXISTING BUILDING ELEVATIONS NOTED IN THIS ALP ARE FROM AGIS DATA PREPARED BY WOOLPERT, BOTHELL, WA.
4. SEE AIRPORT PROPERTY MAP FOR PROPERTY OWNERSHIP DETAILS.
5. FIRE SUPPRESSION SYSTEM EXPANSION IN THIS LOCATION TO INCLUDE AN ADDITIONAL 160,000 GALLONS OF WATER STORAGE CAPACITY AND A 2500 GALLON PER MINUTE PUMP.
6. PAVEMENT DATA IS LOCATED ON PAGE 4 OF THIS DRAWING SET.
7. AN RSA IMPROVEMENT PROJECT IS PLANNED TO FILL GRADE LAND OFF BOTH RUNWAY ENDS TO MEET FAA GRADING STANDARDS. THE RSA IMPROVEMENT PROJECT AREA IS SHOWN ON THE DRAWING AS A SHADED AREA. THE FILL MATERIAL WILL BE HELD IN PLACE BY APPROPRIATELY DESIGNED AND CONSTRUCTED RETAINING WALLS TO ENSURE THE STABILITY OF THE RSA, WHICH IS DESIGNED TO ACCOMMODATE THE WEIGHT OF AIRCRAFT THAT MIGHT OVERRUN THE RUNWAY AND EMERGENCY SERVICE VEHICLES.
8. FUTURE PLANNING INCLUDES ELEVATED RUNWAY GUARD LIGHTS (WIG-WAGS) AND IN-PAVEMENT RUNWAY GUARD LIGHTING FOR CONNECTING TAXIWAYS A2 - A7 TO IMPROVE SITUATIONAL AWARENESS AT THESE DIRECT ACCESS POINTS FROM THE APRON TO THE RUNWAY.

FAA APPROVAL STAMP

Approved conditionally April 17, 2017
Subject to comments contained in our letter dated: 4-17-2017

FEDERAL AVIATION ADMINISTRATION
Western-Pacific Region
By: *M. J. W.*
Manager / Assistant Manager - Protonex/ADO

LEGEND		
EXISTING	ULTIMATE	DESCRIPTION
---	---	AIRCRAFT PROPERTY LINE
---	---	SECTION CORNERS
---	---	AIRCRAFT REFERENCE POINT (ARP)
---	---	AIRCRAFT ROTATING BEACON
N/A	---	AVIATION EASEMENT
---	---	RSA IMPROVEMENT AREA
---	---	30' BUILDING RESTRICTION LINE
---	---	STRUCTURES ON AIRPORT
N/A	---	ABANDON/REMOVE BUILDING
---	---	STRUCTURE OFF AIRPORT
---	---	AUTOMATED WEATHER OBSERVATION STATION
N/A	---	AIRCRAFT PAVEMENT
---	---	ABANDON/REMOVE PAVEMENT
---	---	FENCE LINE
---	---	HOLD MARKING
---	---	OBJECT FREE AREA
---	---	RUNWAY SAFETY AREA
---	---	OBSTACLE FREE ZONE
---	---	RUNWAY PROTECTION ZONE
---	---	TAXIWAY OBJECT FREE AREA
---	---	TAXIWAY SAFETY AREA
---	---	RUNWAY APPROACH SURFACE
---	---	THRESHOLD SITING SURFACE
---	---	DEPARTURE SURFACE
---	---	TIE-DOWNS
---	---	PAPI-4
---	---	RUNWAY END IDENTIFIER LIGHTS (REILS)
---	---	WINDSOCK
---	---	TOPOGRAPHIC CONTOURS
---	---	PACs AND SACs

SUBMITTED BY:
Coffman Associates

FOR APPROVAL BY:

APPROVED BY: *[Signature]* ON THE DATE OF: 2/10/17
By: *[Signature]*
Public Works Director

SEDONA AIRPORT
AIRPORT LAYOUT
DRAWING
SEDONA, ARIZONA

PLANNED BY: Eric Pfeiffer
DETAILED BY: Maagie Deaver
APPROVED BY: Jim Harris P.E.

FEBRUARY 2017 SHEET 2 OF 10

Coffman Associates
Airport Consultants
www.coffmanassociates.com