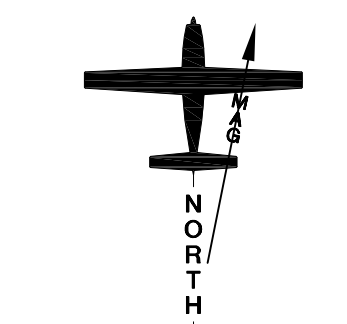
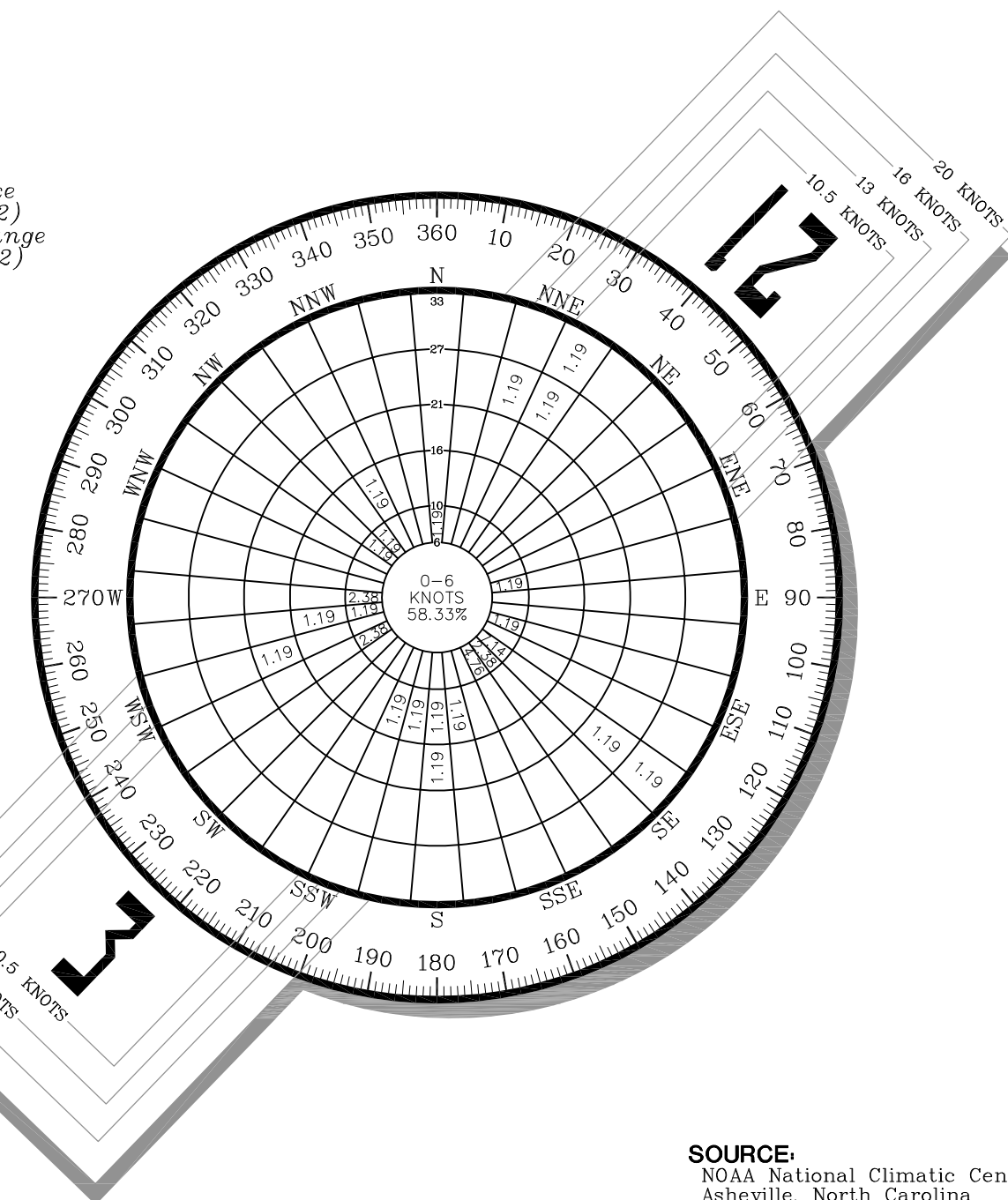


IFR CAT-I WIND COVERAGE				
Runway	10.5 Knots	13 Knots	16 Knots	20 Knots
	12 MPH	15 MPH	18 MPH	23 mph
Runway 3-21	93.78%	96.17%	97.61%	97.62%



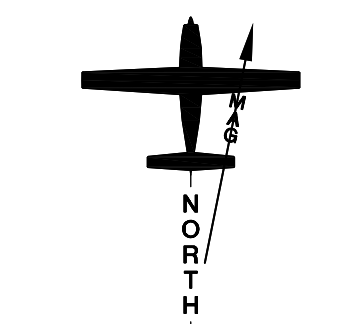
Magnetic Variance  
10° 52' East (2012)  
Annual Rate of Change  
00° 06' West (2012)



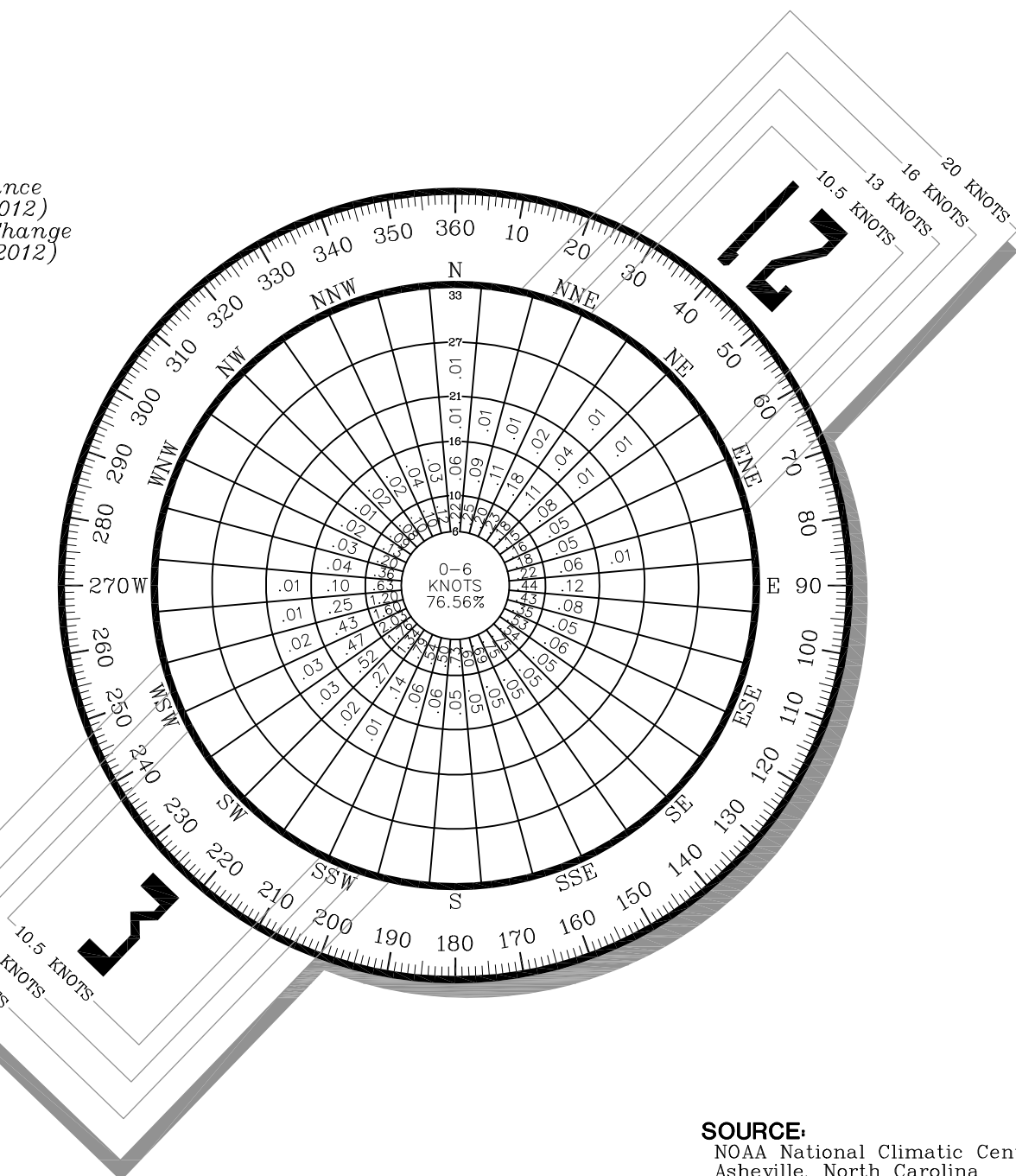
**SOURCE:**  
NOAA National Climatic Center  
Asheville, North Carolina  
Scottsdale Airport (SDL)  
Scottsdale, Arizona

**OBSERVATIONS:**  
04 IFR CAT-I Observations  
1997-2006

RUNWAY DATA	RUNWAY 3-21	
	EXISTING	ULTIMATE
RUNWAY CATEGORY/AIRCRAFT DESIGN GROUP	D-II	SAME
CRITICAL DESIGN AIRCRAFT	GULFSTREAM IV	SAME
UNDER CARRIAGE WIDTH (FEET)	13.66'	SAME
WINGSPAN OF DESIGN AIRCRAFT	77.83'	SAME
TAIL HEIGHT OF DESIGN AIRCRAFT (FEET)	24.42'	SAME
APPROACH SPEED OF DESIGN AIRCRAFT (KNOTS)	145	SAME
MAXIMUM TAKE OFF WEIGHT (lbs)	74,600lbs	SAME
RUNWAY AZIMUTH	43°59'10"	SAME
RUNWAY BEARING (TRUE)	N43°59'10.164"E	SAME
RUNWAY DIMENSIONS	8,249' X 100'	SAME
ELEVATION OF RWY. TOUCH DOWN ZONE (MSL)	1456.0' / 1498.7'	SAME
ELEVATION OF RUNWAY HIGH POINT (above MSL)	1510.3'	SAME
ELEVATION OF RUNWAY LOW POINT (above MSL)	1444.3'	SAME
WIND COVERAGE IN MPH/KNOTS	12/10.5- 98.7% 15/13 - 99.65% 18/15- 99.93% 23/20- 99.98%	
APPROACH VISIBILITY MINIMUMS	+1 MILE/+1 MILE	SAME
14 CFR PART 77 CATEGORY	NONPREC/NONPREC	SAME
RUNWAY INSTRUMENTATION	NONPREC/NONPREC	SAME
RUNWAY APPROACH SURFACES	34:1/34:1	SAME
RUNWAY THRESHOLD DISPLACEMENT	740' / 400'	SAME
RUNWAY SAFETY AREA WIDTH (RSA)	400'	SAME
RSA DISTANCE BEYOND EACH RUNWAY END <sup>1</sup>	1000' / 1000'	SAME
RUNWAY OBJECT FREE AREA WIDTH (OFA) <sup>2</sup>	800'	SAME
OFA DISTANCE BEYOND EACH RUNWAY END <sup>2</sup>	1000' / 1000'	SAME
RUNWAY OBSTACLE FREE ZONE WIDTH (OFZ)	400'	SAME
OFZ DISTANCE BEYOND EACH RUNWAY END	200' / 200'	SAME
LINE OF SITE REQUIREMENT MET	YES	SAME
RUNWAY PAVEMENT MATERIAL	ASPHALT	SAME
RUNWAY PAVEMENT SURFACE TREATMENT	NONE	SAME
PAVEMENT STRENGTH (in thousand lbs.) <sup>3</sup>	45(S), 75(D)	SAME
RUNWAY EFFECTIVE GRADIENT (in %)	0.81%	SAME
MAXIMUM GRADIENT (in %)	0.98%	SAME
RUNWAY LIGHTING	MIRL	SAME
RUNWAY MARKINGS	NONPREC/NONPREC	SAME
RUNWAY APPROACH LIGHTING	NONE	SAME
RUNWAY TAXIWAY SEPARATION	250'	SAME
TAXIWAY PAVEMENT MATERIAL	ASPHALT	SAME
TAXIWAY LIGHTING	MIRL	SAME
TAXIWAY MARKING	CENTERLINE, HOLD LINES	SAME
TAXIWAY OBJECT FREE AREA	129.0'	SAME
TAXIWAY SAFETY AREA WIDTH	77.8'	SAME
TAXIWAY WINGTIP CLEARANCE	10.0'	SAME
TAXIWAY CL TO FIXED OR MOVEABLE OBJECT	57.5'	SAME
DISTANCE FROM RWY. CL TO HOLD BARS	152'	SAME
VISUAL AIDS	PAPI-2(L) REILs	PAPI-4(L) REILs
NAVIGATIONAL AIDS	VORTAC GPS	SAME SAME



Magnetic Variance  
10° 52' East (2012)  
Annual Rate of Change  
00° 06' West (2012)

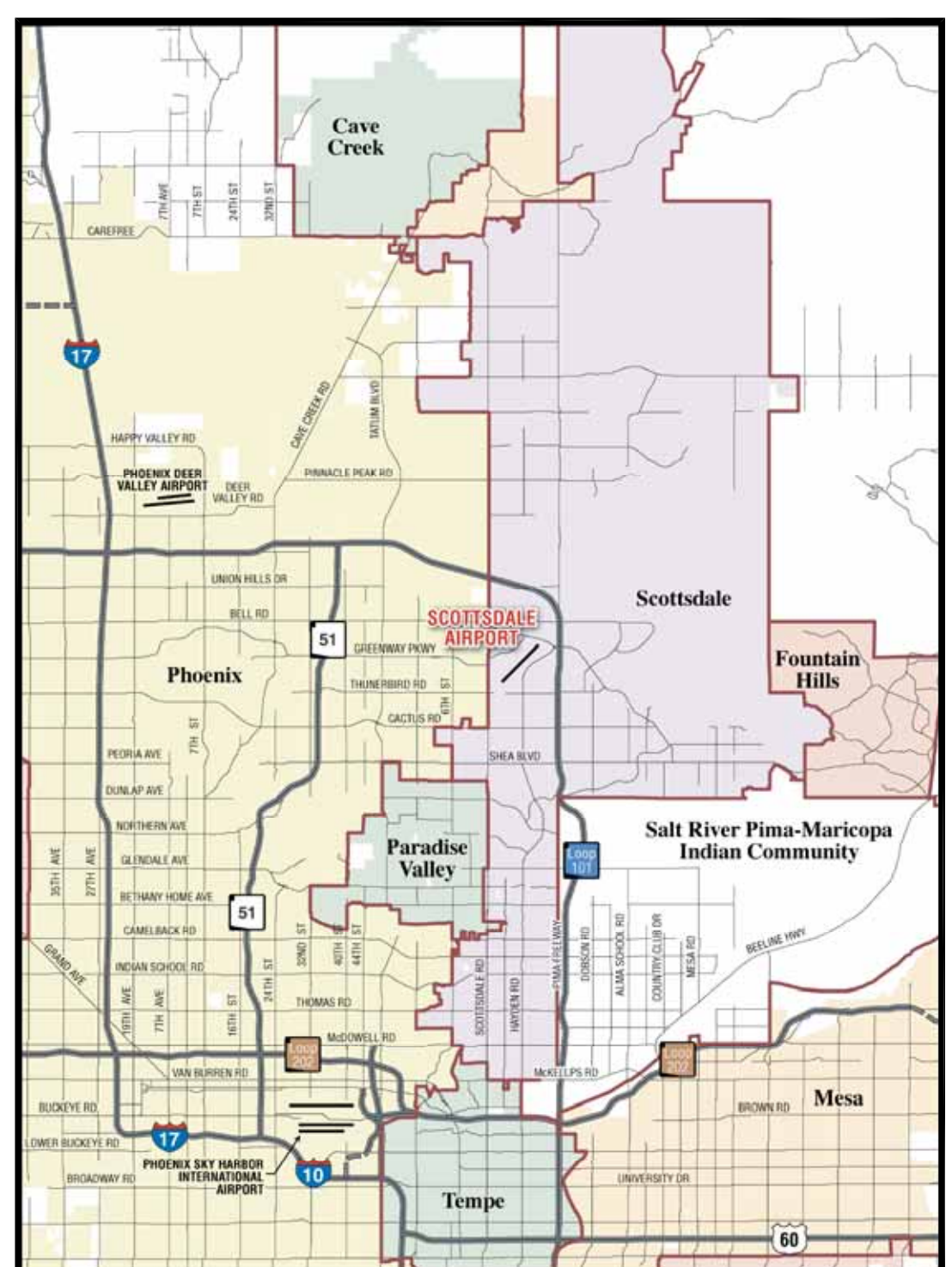


**SOURCE:**  
NOAA National Climatic Center  
Asheville, North Carolina  
Scottsdale Airport (SDL)  
Scottsdale, Arizona

**OBSERVATIONS:**  
50,294 All Weather Observations  
1997-2006

<sup>1</sup> Based on the Declared Distances approved by the FAA on November 17, 2009.  
<sup>2</sup> Runway Object Free Area does not reflect existing conditions. Actual width is 670'. Actual distance beyond each runway end is 470' for Runway 3 and is 30' for Runway 21.  
<sup>3</sup> Pavement strengths are expressed in Single(S), Dual(D) wheel loading capacities.

DEVIATIONS FROM FAA AIRPORT DESIGN STANDARDS				
DEVIATION DESCRIPTION	EFFECTED DESIGN STANDARD	STANDARD	EXISTING	PROPOSED DISPOSITION
Runway Safety Area Width	AC 150/5300-13	500'	400'	REQUEST RUNWAY SAFETY AREA DETERMINATION.
Runway 3 Object Free Area Length Beyond Runway End	AC 150/5300-13	1000'	470'	REQUEST MODIFICATION TO STANDARDS
Runway 21 Object Free Area Length Beyond Runway End	AC 150/5300-13	1000'	30'	REQUEST MODIFICATION TO STANDARDS
Rwy Object Free Area Width	AC 150/5300-13	800'	670'	REQUEST MODIFICATION TO STANDARDS
Rwy Centerline to Hold line	AC 150/5300-13	266'	152'	REQUEST MODIFICATION TO STANDARDS
Rwy Centerline to Parallel Taxiway	AC 150/5300-13	300'	250'	REQUEST MODIFICATION TO STANDARDS
Rwy Centerline to Aircraft Parking	AC 150/5300-13	400'	325'	REQUEST MODIFICATION TO STANDARDS
Taxiway Shoulder Width (Taxiway "A")	AC 150/5300-13	10'	0'	REQUEST MODIFICATION TO STANDARDS

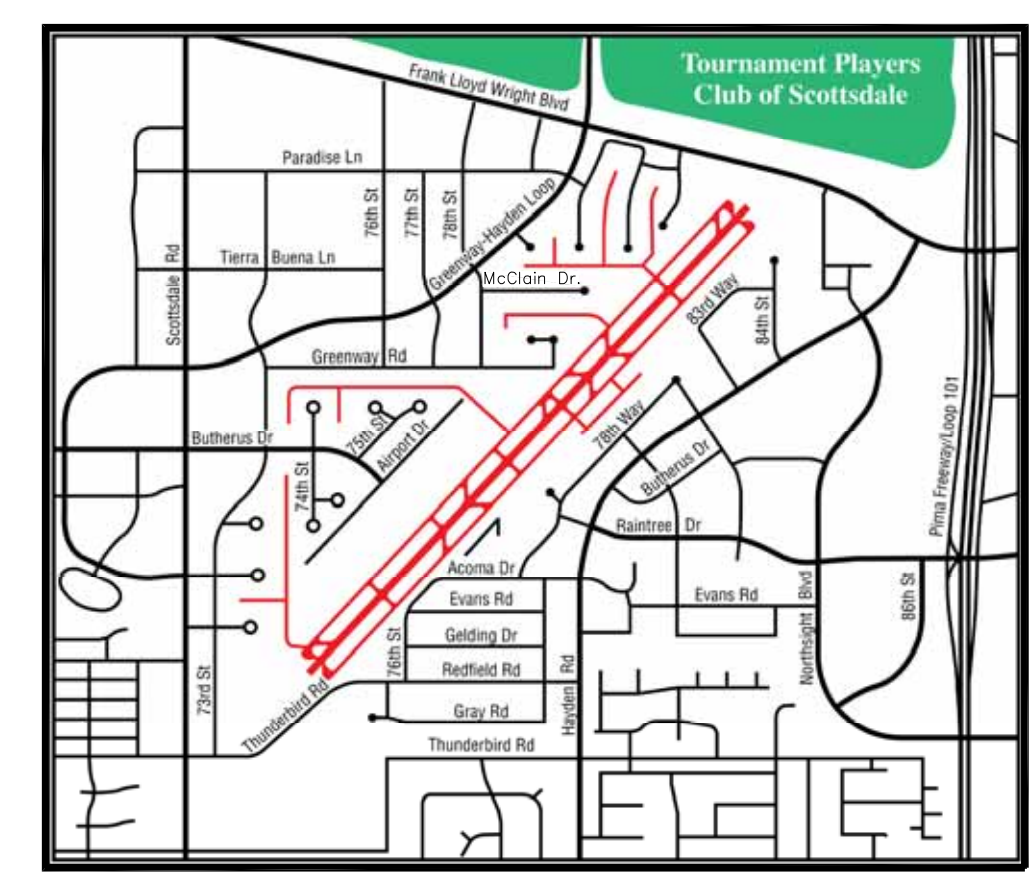


VICINITY MAP

AIRPORT DATA			
SCOTTSDALE AIRPORT (SDL)			
CITY: SCOTTSDALE	COUNTY: MARICOPA	EXISTING	ULTIMATE
RANGE: 4 East	TOWNSHIP: 3 North		
	CIVIL TOWNSHIP: --		
AIRPORT SERVICE LEVEL		RELIEVER	SAME
AIRPORT REFERENCE CODE		D-II	SAME
DESIGN AIRCRAFT		GULFSTREAM IV	SAME
AIRPORT ELEVATION (above MSL)		1510.3'	SAME
MEAN MAXIMUM TEMPERATURE OF HOTTEST MONTH		104.8°F (July)	SAME
AIRPORT REFERENCE POINT	Latitude	33°37'22.4000" N	SAME
(ARP) COORDINATES (NAD 83)	Longitude	111°54'37.9000" W	SAME
AIRPORT and TERMINAL NAVIGATIONAL AIDS		ROTATING BEACON	SAME
		ATCT	SAME
		ASOS	SAME
		--	--
CPS APPROACH TO AIRPORT		YES	SAME
RUNWAY END COORDINATES (NAD 83)		EXISTING	ULTIMATE
RUNWAY 3	Latitude	33°36'53.0202" N	SAME
	Longitude	111°55'11.7770" W	SAME
RUNWAY 21	Latitude	33°37'51.7223" N	SAME
	Longitude	111°54'04.0366" W	SAME
RUNWAY 3 DISPLACED THRESHOLD	Latitude	33°36'58.2827" N	SAME
	Longitude	111°55'05.7027" W	SAME
RUNWAY 21 DISPLACED THRESHOLD	Latitude	33°37'48.8711" N	SAME
	Longitude	111°54'07.3208" W	SAME

NOTE: Existing runway and ARP coordinates provided by the FAA's Aviation System Standards (AVN) (March 2012).

DECLARED DISTANCES	RUNWAY	
	3	21
TAKEOFF RUN AVAILABLE (TORA)	8249'	8249'
TAKEOFF DISTANCE AVAILABLE (TODA)	8249'	8249'
ACCELERATE-STOP DISTANCE AVAILABLE (ASDA)	7849'	7509'
LANDING DISTANCE AVAILABLE (LDA)	7109'	7109'



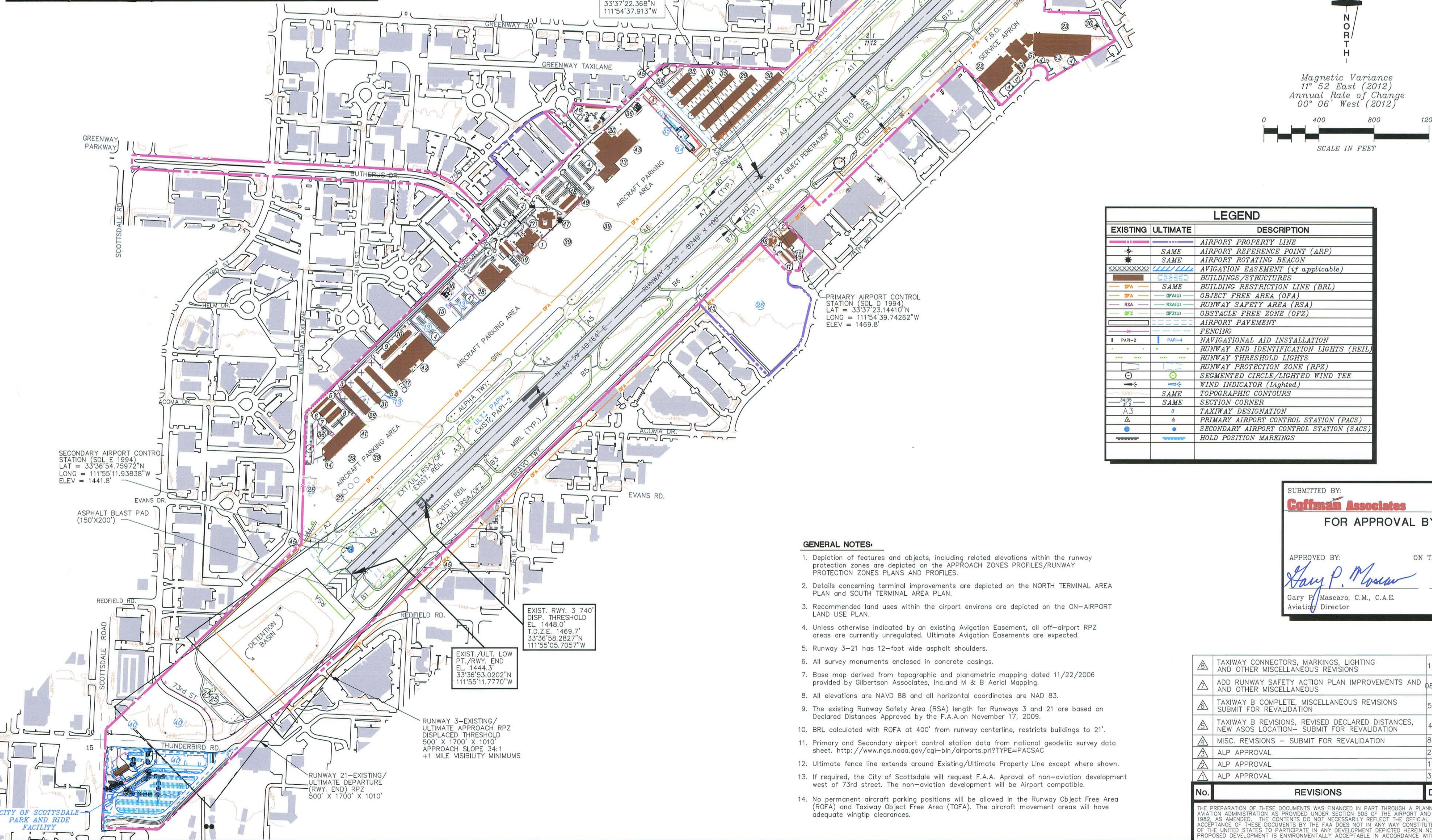
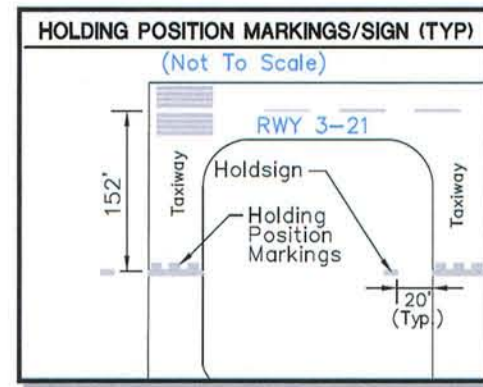
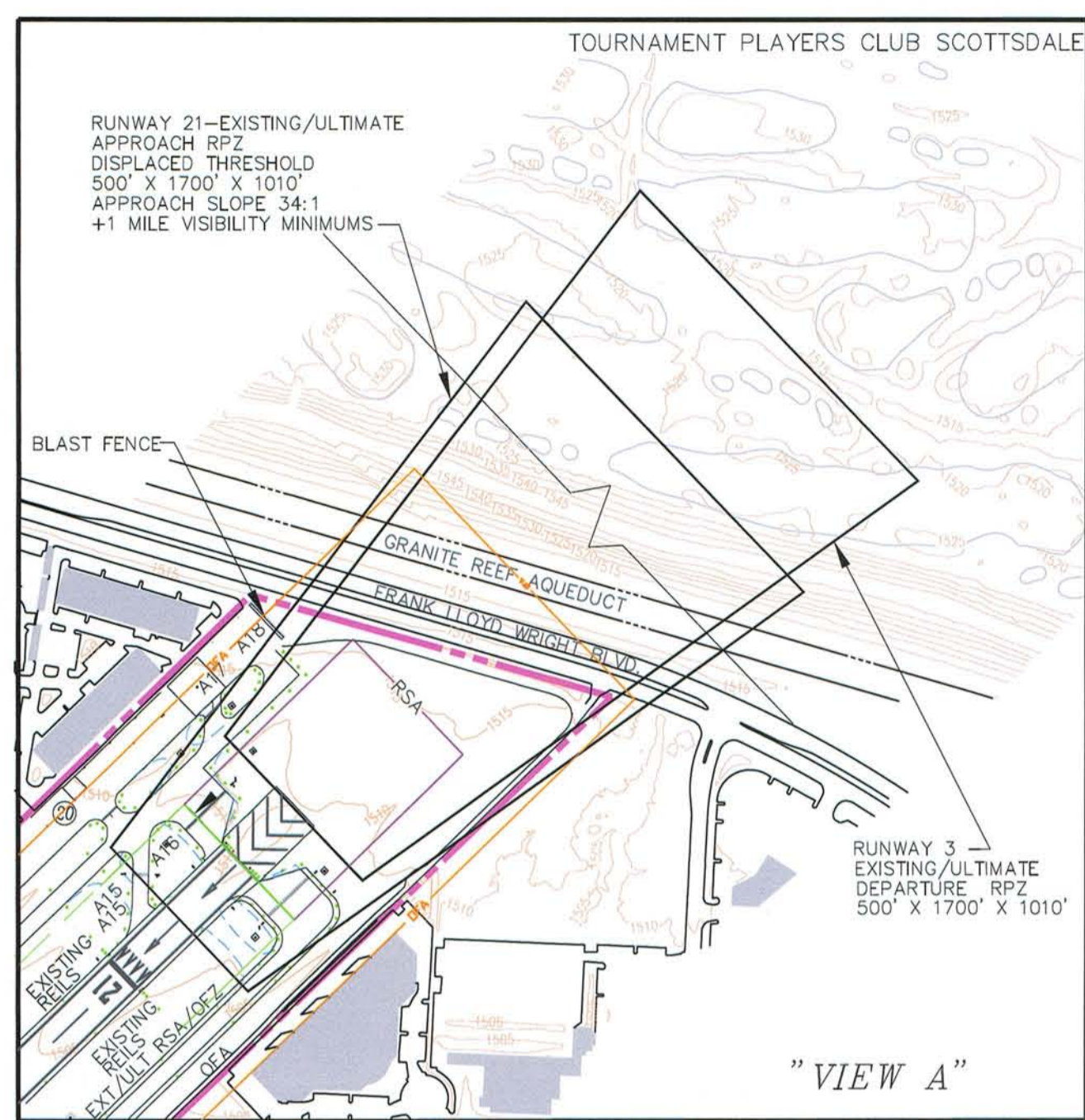
LOCATION MAP

No.	REVISIONS	DATE	BY	APPD.
1	ADDED AS-BUILT PROJECTS, DECLARED DISTANCES AND OTHER MISCELLANEOUS REVISIONS	3/26/12	GM	--
2	ADD RUNWAY SAFETY ACTION PLAN IMPROVEMENTS AND OTHER MISCELLANEOUS REVISIONS	08/27/08	STG	--
3	TAXIWAY B COMPLETE, MISCELLANEOUS REVISIONS SUBMIT FOR REVALIDATION	5/01/02	STG	FAA
4	TAXIWAY B REVISIONS, REVISED DECLARED DISTANCES, NEW ASOS LOCATION- SUBMIT FOR REVALIDATION	4/06/01	STG	FAA
5	MISC. REVISIONS - SUBMIT FOR REVALIDATION	8/30/00	STG	FAA
6	ALP APPROVAL	2/20/97	JSK	FAA
7	ALP APPROVAL	11/3/95	JSK	FAA
8	ALP APPROVAL	3/25/93	JSK	FAA

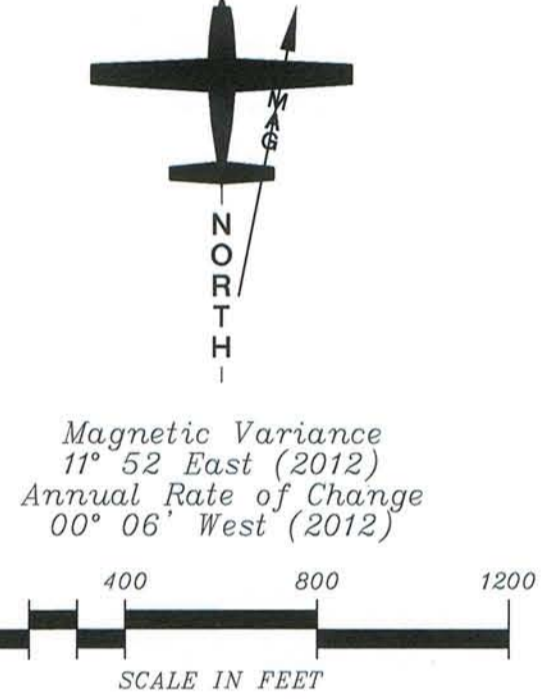
SCOTTSDALE AIRPORT  
AIRPORT DATA SHEET  
SCOTTSDALE, ARIZONA

PLANNED BY: James M. Harris P.E.  
DETAILED BY: Maggie Beaver  
APPROVED BY: James M. Harris P.E.





BUILDINGS/FACILITIES			
EXISTING	ULTIMATE	DESCRIPTION	ELEVATION
1	---	ADMINISTRATION TERMINAL BUILDING	1496.4'
2	---	AIRCRAFT RESCUE and FIREFIGHTING (ARFF)	1500.0'
3	---	AIRCRAFT MAINTENANCE	1468.7'
4	---	AUTOMOBILE PARKING LOTS	NA
5	---	AUTOMOBILE PARKING SHADE STRUCTURE	1458.9'
6	---	AUTOMOBILE PARKING SHADE STRUCTURE	1459.9'
7	---	AUTOMOBILE PARKING SHADE STRUCTURE	1459.2'
8	---	AUTOMOBILE PARKING SHADE STRUCTURE	1458.9'
9	---	AUTOMOBILE PARKING SHADE STRUCTURE	1458.9'
10	---	AUTOMOBILE PARKING SHADE STRUCTURE	1468.4'
11	---	AUTOMOBILE PARKING SHADE STRUCTURE	1474.2'
12	---	AUTOMOBILE PARKING SHADE STRUCTURE	1474.3'
13	---	CONVENTIONAL HANGAR	1494.5'
14	---	CORPORATE HANGAR	1494.5'
15	---	CORPORATE HANGAR	1479.4'
16	---	AIR TRAFFIC CONTROL TOWER (ATCT)	1567.2'
17	---	COMMERCIAL OFFICE BUILDING	1481.6'
18	---	FIXED BASE OPERATION (FBO) FACILITY	1479.4'
19	---	FIXED BASE OPERATION (FBO) FACILITY	1487.5'
20	---	FIXED BASE OPERATION (FBO) FACILITY	1497.2'
21	---	FIXED BASE OPERATION (FBO) FACILITY	1532.0'
22	---	FIXED BASE OPERATION (FBO) FACILITY	1528.3'
23	---	FIXED BASE OPERATION (FBO) FACILITY	1528.0'
24	---	WEATHER INSTRUMENTS	1465.0'
25	---	AUTOMATED SURFACE OBSERVATION SYSTEM (ASOS)	1460.0'
26	---	AVIATION RELATED DEVELOPMENT	NA
27	---	HELICOPTER PARKING	NA
28	---	T-HANGARS	1468.7'
29	---	T-HANGARS	1495.0'
30	---	T-HANGARS	1493.5'
31	---	SHADE HANGARS	1467.7'
32	---	SHADE HANGARS	1468.9'
33	---	SHADE HANGARS	1491.1'
34	---	SHADE HANGARS	1491.7'
35	---	SHADE HANGARS	1492.4'
36	---	UNDERGROUND FUEL STORAGE FACILITY	NA
37	---	UNDERGROUND FUEL STORAGE FACILITY	NA
38	---	WATER/WELL - SCOTTSDALE	1512.0'
39	---	AIRCRAFT PARKING (TIEDOWNS)	NA
40	---	NON-AVIATION RELATED DEVELOPMENT	NA
41	---	COMMERCIAL OFFICE BLDG./CONV. HANGAR	1494.5'
42	---	FIXED BASE OPERATION (FBO) FACILITY	1489.2'
43	---	COMMERCIAL OFFICE BLDG./CONV. HANGAR	1493.1'
44	---	AIRCRAFT WASH RACK/PILOT'S LOUNGE	1522.1'
45	---	AIRPARK AIRCRAFT ACCESS GATE	NA
46	---	WATER TREATMENT FACILITY	1489.9'
47	---	AIRPORT ROTATING BEACON	1519.7'
48	---	AUTOMOBILE PARKING SHADE STRUCTURE	1475.0'
49	---	AUTOMOBILE PARKING SHADE STRUCTURE	1475.0'
50	---	AUTOMOBILE PARKING SHADE STRUCTURE	1495.0'
51	---	AUTOMOBILE PARKING SHADE STRUCTURE	1495.0'
52	---	AUTOMOBILE PARKING SHADE STRUCTURE	1495.0'
53	---	AIRCRAFT WASH PAD	NA
54	---	AIRCRAFT OPERATIONS CENTER	±1502.0'
55	---	COVERED AUTO PARKING WITH PV SOLAR PANELS ON TOP	±1483.0'



EXISTING	ULTIMATE	DESCRIPTION
---	---	AIRPORT PROPERTY LINE
+	+	AIRPORT REFERENCE POINT (ARP)
+	+	AIRPORT ROTATING BEACON
XXXXXX	XXXXXX	AVIATION EASEMENT (if applicable)
---	---	BUILDINGS/STRUCTURES
---	---	BUILDING RESTRICTION LINE (BRL)
---	---	OBJECT FREE AREA (OFA)
---	---	RUNWAY SAFETY AREA (RSA)
---	---	OBSTACLE FREE ZONE (OFZ)
---	---	AIRPORT PAVEMENT
---	---	FENCING
---	---	NAVIGATIONAL AID INSTALLATION
---	---	RUNWAY END IDENTIFICATION LIGHTS (REIL)
---	---	RUNWAY THRESHOLD LIGHTS
---	---	RUNWAY PROTECTION ZONE (RPZ)
---	---	SEGMENTED CIRCLE/LIGHTED WIND TEE
---	---	WIND INDICATOR (Lighted)
---	---	TOPOGRAPHIC CONTOURS
---	---	SECTION CORNER
---	---	TAXIWAY DESIGNATION
---	---	PRIMARY AIRPORT CONTROL STATION (PACS)
---	---	SECONDARY AIRPORT CONTROL STATION (SACS)
---	---	HOLD POSITION MARKINGS

- GENERAL NOTES:**
1. Depiction of features and objects, including related elevations within the runway protection zones are depicted on the APPROACH ZONES PROFILES/RUNWAY PROTECTION ZONES PLANS AND PROFILES.
  2. Details concerning terminal improvements are depicted on the NORTH TERMINAL AREA PLAN and SOUTH TERMINAL AREA PLAN.
  3. Recommended land uses within the airport environs are depicted on the ON-AIRPORT LAND USE PLAN.
  4. Unless otherwise indicated by an existing Aviation Easement, all off-airport RPZ areas are currently unregulated. Ultimate Aviation Easements are expected.
  5. Runway 3-21 has 12-foot wide asphalt shoulders.
  6. All survey monuments enclosed in concrete casings.
  7. Base map derived from topographic and planimetric mapping dated 11/22/2006 provided by Gilbertson Associates, Inc. and M & B Aerial Mapping.
  8. All elevations are NAVD 88 and all horizontal coordinates are NAD 83.
  9. The existing Runway Safety Area (RSA) length for Runways 3 and 21 are based on Declared Distances Approved by the F.A.A. on November 17, 2009.
  10. BRL calculated with ROFA at 400' from runway centerline, restricts buildings to 21'.
  11. Primary and Secondary airport control station data from national geodetic survey data sheet. <http://www.ngs.noaa.gov/cgi-bin/airports.pri?TYPE=PACSAC>
  12. Ultimate fence line extends around Existing/Ultimate Property Line except where shown.
  13. If required, the City of Scottsdale will request F.A.A. Approval of non-aviation development west of 73rd street. The non-aviation development will be Airport compatible.
  14. No permanent aircraft parking positions will be allowed in the Runway Object Free Area (ROFA) and Taxiway Object Free Area (TOFA). The aircraft movement areas will have adequate wingtip clearances.

SUBMITTED BY:  
**Coffman Associates**

FOR APPROVAL BY:

APPROVED BY: *Gary P. Mascaro* ON THE DATE OF: *6/5/12*  
Gary P. Mascaro, C.M., C.A.E.  
Aviation Director

**FAA APPROVAL STAMP**

Approved conditionally *SEPT 16, 2009*

Subject to comments contained in our letter dated: *9/16/08*

Revalidated **JUL 16 2012**

FEDERAL AVIATION ADMINISTRATION  
Western-Pacific Region

By: *[Signature]*  
Manager -LAX/ADO

No.	REVISIONS	DATE	BY	APP'D.
1	TAXIWAY CONNECTORS, MARKINGS, LIGHTING AND OTHER MISCELLANEOUS REVISIONS	1/25/12	GM	---
2	ADD RUNWAY SAFETY ACTION PLAN IMPROVEMENTS AND OTHER MISCELLANEOUS	08/27/08	STG	---
3	TAXIWAY B COMPLETE, MISCELLANEOUS REVISIONS SUBMIT FOR REVALIDATION	5/01/02	STG	FAA
4	TAXIWAY B REVISIONS, REVISED DECLARED DISTANCES, NEW ASOS LOCATION-- SUBMIT FOR REVALIDATION	4/06/01	STG	FAA
5	MISC. REVISIONS -- SUBMIT FOR REVALIDATION	8/30/00	STG	FAA
6	ALP APPROVAL	2/20/97	JSK	FAA
7	ALP APPROVAL	11/3/95	JSK	FAA
8	ALP APPROVAL	3/25/93	JSK	FAA

**SCOTTSDALE AIRPORT  
AIRPORT LAYOUT  
DRAWING**

SCOTTSDALE, ARIZONA

PLANNED BY: James M. Harris P.E.  
DETAILED BY: James M. Harris P.E.  
APPROVED BY: Gary P. Mascaro P.E.

March 23, 2012 SHEET 2 OF 8

**Coffman Associates**  
Airport Consultants  
[www.coffmanassociates.com](http://www.coffmanassociates.com)

THE PREPARATION OF THESE DOCUMENTS WAS FINANCED IN PART THROUGH A PLANNING GRANT FROM THE FEDERAL AVIATION ADMINISTRATION AS PROVIDED UNDER SECTION 505 OF THE AIRPORT AND AIRWAY IMPROVEMENT ACT OF 1982. AS AMENDED, THE CONTENTS DO NOT NECESSARILY REFLECT THE OFFICIAL VIEWS OR POLICY OF THE FAA. ACCEPTANCE OF THESE DOCUMENTS BY THE FAA DOES NOT IN ANY WAY CONSTITUTE A COMMITMENT ON THE PART OF THE UNITED STATES TO PARTICIPATE IN ANY DEVELOPMENT DEPICTED HEREIN NOR DOES IT INDICATE THAT THE PROPOSED DEVELOPMENT IS ENVIRONMENTALLY ACCEPTABLE IN ACCORDANCE WITH APPROPRIATE PUBLIC LAWS.