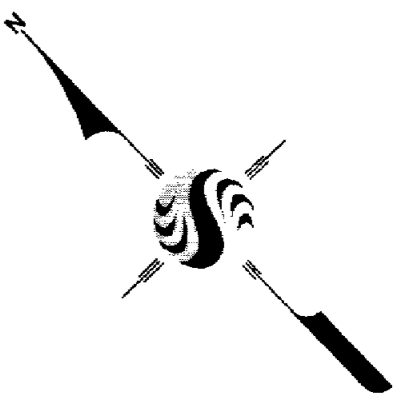
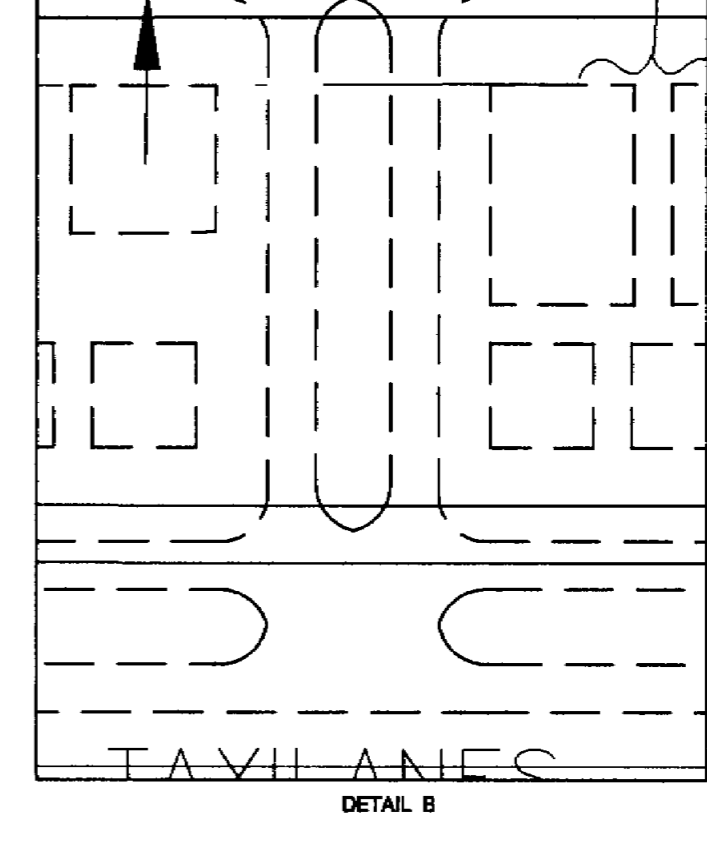
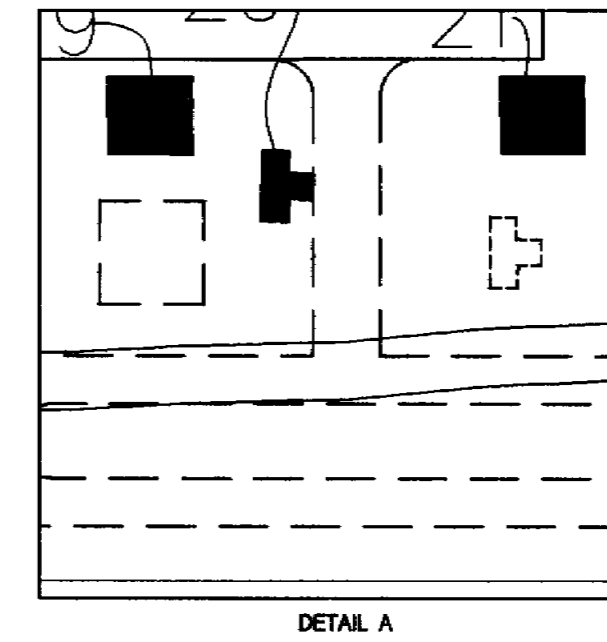


AIRPORT BUILDINGS/FACILITIES			
EXISTING (E)	FUTURE (F)	TOP ELEVATION*	DESCRIPTION
01	01	3177'	ASOS EQUIPMENT STORAGE
02	02	3155'	HELIPAD
03	03	3155'	PRIVATE HELIPADS-BLM (2)
04	04	3175'	FIRE FIGHTING FACILITIES & SHED-BLM
05	05	3168'	OFFICE BUILDING-BLM
06	06	3175'	T-HANGARS (4)
07	07	3183'	PRIVATE HANGAR-AIRCRAFT MAINT. & STORAGE
08	08	3181'	HANGAR-AIRCRAFT MAINT. & STORAGE
09	TO BE REMOVED	3178'	OFFICE BUILDING - HOUSE
10	10	3178'	WATER TANK
11	11	3178'	HOUSE (FBO RESIDENCE)
12	12	3180'	TERMINAL
13	13	3180'	EMERGENCY GENERATOR/ELECTRICAL VAULT
14	14	3188'	HANGAR-FBO AIRCRAFT MAINT. & STORAGE
15	15	3180'	SERVICE BUILDING-FBO
16	16	3180'	FUEL TRUCKS SHADE
17	17	3180'	FUEL TANKS (2)
18	18	3190'	HANGAR-FBO
19	19	3180'	PRIVATE HANGAR
20	TO BE RELOCATED	3180'	PRIVATE HANGAR-ULTRA LIGHT
21	21	3180'	PRIVATE HANGAR
22	22	3160'	HANGAR CONCRETE PAD (UNFINISHED)
23	23	3180'	COMMERCIAL HANGAR
--	24	3180'	HANGAR LEASE LOTS - FUTURE (6)
--	25	3184'	HANGAR LEASE LOTS - FUTURE (3)
--	26	3180'	HANGAR LEASE LOTS - ULTIMATE (2)
--	27	3184'	HANGAR LEASE LOTS - ULTIMATE (7)
--	28	3178'	NEW TERMINAL-FUTURE
--	29	3155'	HELIPADS-FUTURE (12)

\* TOP ELEVATIONS ESTIMATED BASED ON BUILDING HEIGHTS PROVIDED BY MR. DOUG BENSON (FBO).



**GENERAL NOTES**

- NORTH AMERICAN DATUM (NAD 83) USED FOR ALL LAT/LONG IDENTIFICATIONS.
- THE BUILDING RESTRICTION LINE (BRL) IS ESTABLISHED BASED ON PART 77 CLEARANCE FOR A 20-FT HIGH OBJECT, TAXIWAY OFA, RUNWAY VISIBILITY ZONE, AND APRON EDGE.
- THERE ARE NO OFZ PENETRATIONS.
- BASE MAP AND CONTOUR DATA FROM PREVIOUS AIRPORT LAYOUT PLAN (1993). UPDATED INFORMATION PROVIDED BY CITY OF SAFFORD AND ON-SITE INVENTORY.
- RUNWAY 12-30 HAS REELS AT EACH RUNWAY END. HOWEVER, THEY HAVE BEEN DEACTIVATED BY THE FAA.
- AIRPORT DEVELOPMENT IDENTIFIED FOR THE PLANNING PERIOD IS REFERRED TO AS FUTURE (F) DEVELOPMENT VERSUS ULTIMATE (U), WHICH REFERS TO DEVELOPMENT PROJECTED BEYOND THE PLANNING PERIOD.

ANDERSON PRIVATE PROPERTY TO BE ACQUIRED

ANDERSON PRIVATE PROPERTY TO BE ACQUIRED

LEGEND	
DATA ELEMENTS	EXISTING (E) / FUTURE (F)
AIRPORT PROPERTY LINE	---
AIRPORT ROTATING BEACON	□
BUILDINGS	■
SEGMENTED CIRCLE	○
ASOS	□
RUNWAY THRESHOLD LIGHTS	■
RUNWAY END IDENTIFIER LIGHTS (REIL)	•
PAPI	•••••
VASI	••
RUNWAY LIGHTS	*
FENCING	---x---
TOPOGRAPHIC CONTOURS	-750-
BUILDING RESTRICTION LINE (BRL)	- - -
OBJECT FREE AREA (OFA)	- - -
RUNWAY SAFETY AREA (RSA)	- - -
OBSTACLE FREE ZONE (OFZ)	- - -
RUNWAY VISIBILITY ZONE	- - -
FUTURE/ULTIMATE DEVELOPMENT	---
TO BE ABANDONED	---

Stantec Consulting Inc.  
8211 South 48th Street  
Phoenix AZ U.S.A.  
85044  
Tel. 602.438.2200  
Fax. 602.431.9562  
www.stantec.com



1. MASTER PLAN AND ALP UPDATE	AM	WR	00.05.31
Revision	By	Appd.	Date

File Name: 3 sad\_top.dwg TS/AM AM 00.05.31  
Dwn. Dsgn. Dsgn. Date

Title  
**TERMINAL AREA PLAN**  
**SAFFORD REGIONAL AIRPORT**  
**SAFFORD, ARIZONA**

Project No. 81440007 Scale 1:200  
Drawing No. Sheet Revision