

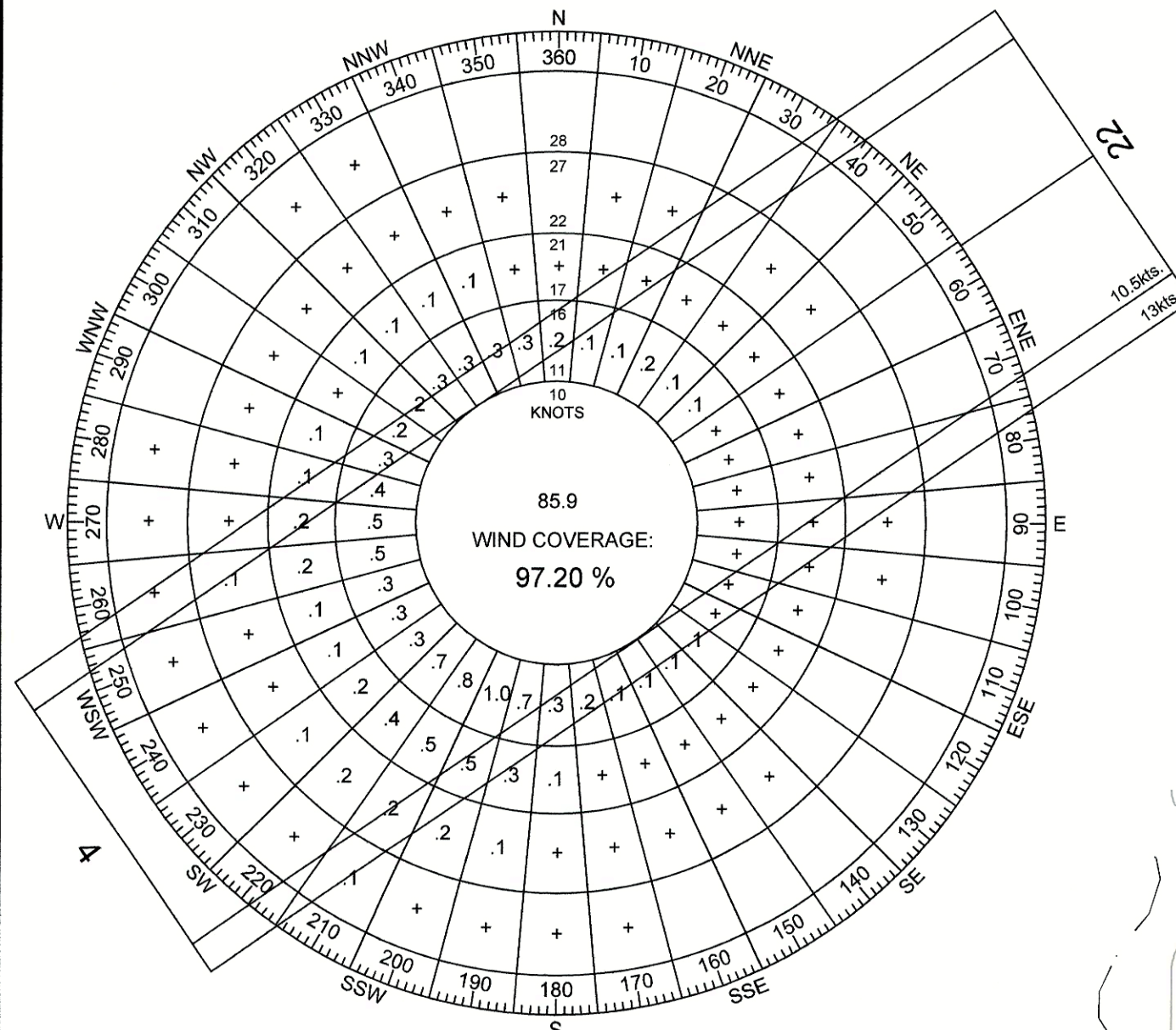
AIRPORT FACILITIES LIST

NO.	FACILITY DESCRIPTION	TOP ELEV. (MSL-EST.)	NO.	FACILITY DESCRIPTION	TOP ELEV. (MSL-EST.)
1	HANGAR	5592'	9	ROTATING BEACON	5600'
2	HANGAR	5595'	10	WIND CONE W/ SEGMENTED CIRCLE	5582'
3	HANGAR	5595'	11	PAPIS	5563'
4	TERMINAL BUILDING	5582'	12	PAPIS	5573'
5	FUEL FARM	5582'	13	SRE BUILDING	5582'
6	ELECTRICAL VAULT	5575'	14	AWOS	5600'
7	AIRCRAFT PARKING	5580'	15	HELICOPTER PARKING	5577'
8	VEHICLE PARKING	5569'			

○ EXISTING
□ FUTURE

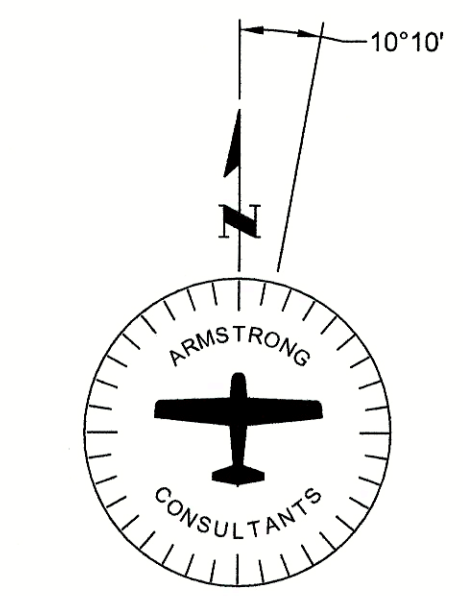
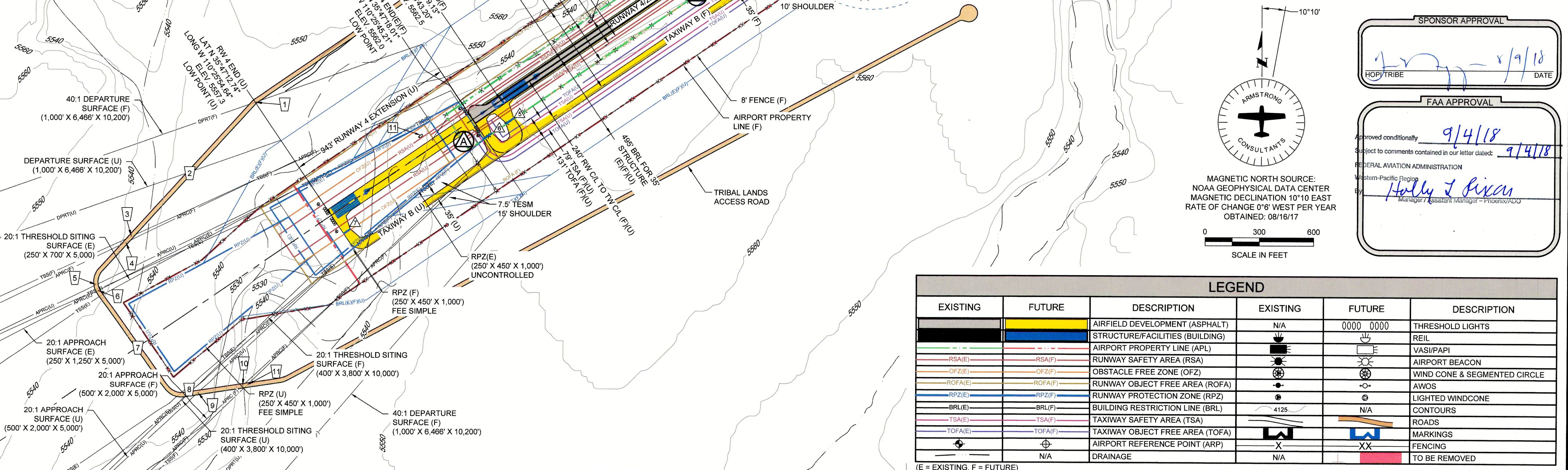
△ TAXIWAY TABLE

NO.	NAME	WIDTH
1	A1 (F)(U)	35'
2	A2 (F)(U)	35'
3	A3 (F)(U)	35'
4	B1 (F)(U)	35'
5	B2 (F)(U)	35'
6	B3 (F)(U)	35'
7	B4 (U)	35'



RUNWAY	10.5 KNOTS	13 KNOTS
4/22	13 MPH	16 MPH
	94.61%	97.20%

ALL WEATHER WIND ROSE
WIND DATA SOURCE: BIA REMOTE AUTOMATED WEATHER OBSERVATION SYSTEM, HOPI ARIZONA.
72,165 OBSERVATIONS: JANUARY 2007 - DECEMBER 2016
LOCATION: 12 MILES EAST OF POLACCA AIRPORT
EL. = 6,186' MSL



LEGEND

EXISTING	FUTURE	DESCRIPTION	EXISTING	FUTURE	DESCRIPTION
[Symbol]	[Symbol]	AIRFIELD DEVELOPMENT (ASPHALT)	[Symbol]	[Symbol]	THRESHOLD LIGHTS
[Symbol]	[Symbol]	STRUCTURE/FACILITIES (BUILDING)	[Symbol]	[Symbol]	REIL
[Symbol]	[Symbol]	AIRPORT PROPERTY LINE (APL)	[Symbol]	[Symbol]	VASI/PAPI
[Symbol]	[Symbol]	RUNWAY SAFETY AREA (RSA)	[Symbol]	[Symbol]	AIRPORT BEACON
[Symbol]	[Symbol]	OBSTACLE FREE ZONE (OFZ)	[Symbol]	[Symbol]	WIND CONE & SEGMENTED CIRCLE
[Symbol]	[Symbol]	RUNWAY OBJECT FREE AREA (ROFA)	[Symbol]	[Symbol]	AWOS
[Symbol]	[Symbol]	RUNWAY PROTECTION ZONE (RPZ)	[Symbol]	[Symbol]	LIGHTED WINDCONE
[Symbol]	[Symbol]	BUILDING RESTRICTION LINE (BRL)	[Symbol]	[Symbol]	CONTOURS
[Symbol]	[Symbol]	TAXIWAY SAFETY AREA (TSA)	[Symbol]	[Symbol]	ROADS
[Symbol]	[Symbol]	TAXIWAY OBJECT FREE AREA (TOFA)	[Symbol]	[Symbol]	MARKINGS
[Symbol]	[Symbol]	AIRPORT REFERENCE POINT (ARP)	[Symbol]	[Symbol]	FENCING
[Symbol]	[Symbol]	DRAINAGE	[Symbol]	[Symbol]	TO BE REMOVED

SPONSOR APPROVAL

Hopi Tribe: *[Signature]* 8/9/18

FAA APPROVAL

Approved conditionally: 9/4/18

Subject to comments contained in our letter dated: 9/4/18

FEDERAL AVIATION ADMINISTRATION
Western-Pacific Region
Holly J. Dixon
Manager / Assistant Manager - Phoenix/ADJ



POLACCA AIRPORT
POLACCA ARIZONA

AIP No. 3-04-0081-01-16
AIRPORT LAYOUT PLAN

No.	Project No.	Date	Description	File	Dwn.	Chkd.	Apprvd.
0	166390	07/2018	ORIGINAL ISSUE	6390502	GWK	MJT	JMR

AIRPORT LAYOUT PLAN