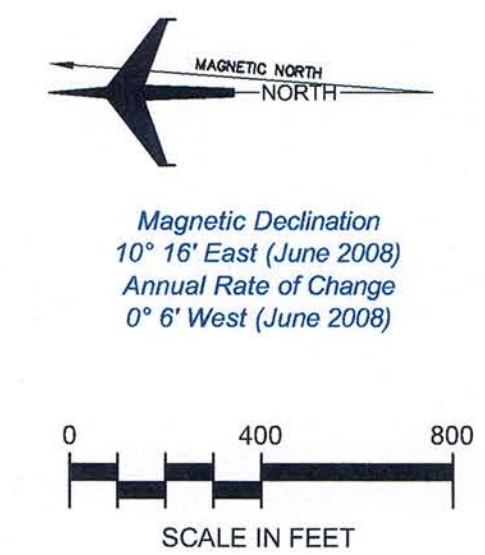
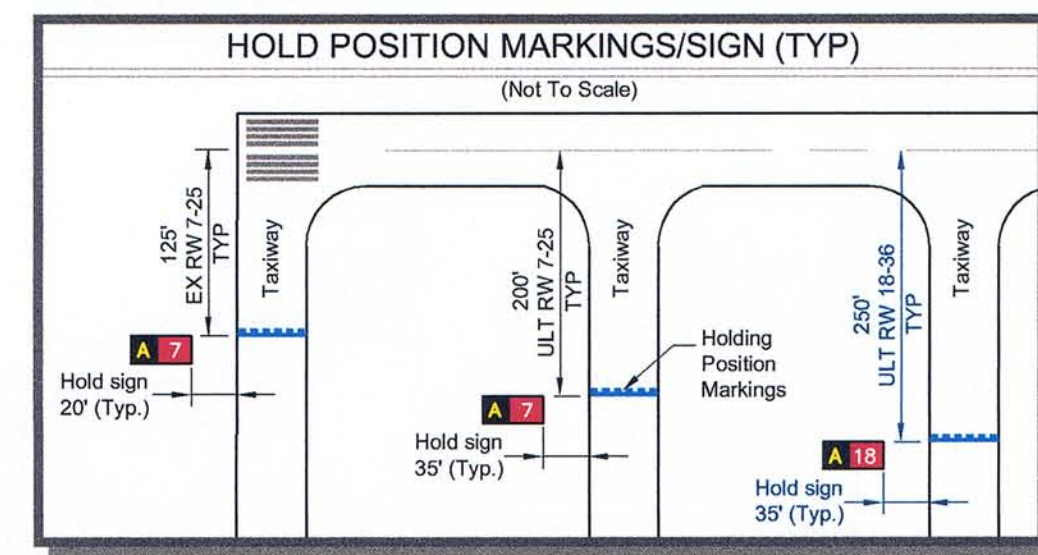


RWY 18
END EL 3851.0
HIGH POINT/TDZ
N 32° 58' 17.620"
W 109° 12' 03.173"



AIRPORT BUILDING TABLE		
EXIST	DESCRIPTION	TOP ELEV
1	TERMINAL	3773.1
2	HANGAR TO BE RELOCATED	3775.2
3	HANGAR	3775.7
4	WATER TANK TO BE REMOVED	3769.2
5	STORAGE BUILDING TO BE REMOVED	3784.6
6	GARAGE	3778.4
7	AWOS (TO BE RELOCATED)	3791.2
8	ELECTRICAL VAULT	3773.1

AIRPORT BUILDING TABLE		
ULT	DESCRIPTION	TOP ELEV
9	AWOS	3777.0
10	CONVENTIONAL HANGAR/FBO	3795.0
11	LOCALIZER	3766.0

TOP OF STRUCTURE ELEVATIONS ARE BASED UPON STANDARD HANGAR AND ANTENNA HEIGHTS AND ARE APPROXIMATE. FINAL TOP ELEVATIONS FOR ULTIMATE STRUCTURES WILL BE CONTINGENT UPON A FINAL GRADING AND DRAINAGE PLAN.

LEGEND		
EXISTING	ULTIMATE	DESCRIPTION
PL(U)	PL(U)	AIRPORT PROPERTY LINE
		SECTION CORNERS
		AIRPORT REFERENCE POINT (ARP)
		AIRPORT ROTATING BEACON
		AVIGATION EASEMENT
		AWOS
		BUILDING RESTRICTION LINE
		PARCEL LINE
		AIRPORT PAVEMENT
		STRUCTURES/FACILITIES
		FENCE
		LOCALIZER
		PAPI-4
		PAPI-2
		LIGHTED WINDSOCK
		HOLD MARKING
		PAC AND SAC STATIONS
		OBJECT FREE AREA
		RUNWAY SAFETY AREA
		OBSTACLE FREE ZONE
		PRECISION OBSTACLE FREE ZONE
		REMOVE OR ABANDON
		RUNWAY PROTECTION ZONE
		RUNWAY VISIBILITY ZONE
		MEDIUM INTENSITY RUNWAY LIGHTS
		SEGMENTED CIRCLE
		THRESHOLD LIGHTS
		TOPOGRAPHY
		ULTIMATE MALSR

+	Existing Power Pole
+	Existing Power Pole Obstructing Part 77 Surface to be Removed
-	New Conduit
-	Existing Overhead Electric to be Underground
-	Existing Overhead Electric to be Removed
■	Non-Aviation Revenue Support
■	Hangar Development Parcels

AIRPORT DATA			
OWNER:	Greenlee County	AIRPORT NPIAS CODE:	GA
CITY:	Clifton, Arizona	COUNTY:	Greenlee
RANGE:	R 30 E	TOWNSHIP:	T 5 S
GREENLEE COUNTY AIRPORT (CFT)			
AIRPORT SERVICE LEVEL	General Aviation	EXISTING	ULTIMATE
AIRPORT REFERENCE CODE	B-II	B-II	B-II/C-III
AIRPORT ELEVATION	3797.1' MSL	3851.0' MSL	
MEAN MAXIMUM TEMPERATURE OF HOTTEST MONTH	100.2° July	100.2° July	
AIRPORT REFERENCE POINT (NAD 83)	Latitude 32° 57' 25.000" N	Longitude 109° 12' 25.547" W	
AIRPORT INSTRUMENT APPROACH	None	GPS, ILS (18)	
NAVAIDS	Airport Beacon	Airport Beacon	
	AWOS	ILS (18), GPS	
	PAPI-2 (7,25)	MALSR (18), AWOS	
		PAPI-4 (18,36)	
		PAPI-2 (7-25)	
GPS AT AIRPORT	No	Yes	

All coordinates are horizontal NAD83 and vertical NAVD88

RUNWAY DATA	RUNWAY 7-25		RUNWAY 18-36	
	EXISTING	ULTIMATE	EXISTING	ULTIMATE
AIRCRAFT APPROACH CATEGORY-DESIGN GROUP	B-II	B-II	C-III	C-III
FAR PART 77 CATEGORY	Visual	Visual	Nonprecision	Nonprecision
APPROACH VISIBILITY MINIMUMS	Visual	Visual	1 Mile	1/2 Mile
DESIGN CRITICAL AIRCRAFT	King Air 100	King Air 100	Boeing 727-200	Boeing 727-200
WINGSPAN OF DESIGN AIRCRAFT	45.8'	45.8'	108.0'	108.0'
UNDERCARRIAGE WIDTH OF DESIGN AIRCRAFT	13'	13'	18.75'	18.75'
APPROACH SPEED (KNOTS) OF DESIGN AIRCRAFT	111	111	138	138
MAXIMUM CERTIFIED TAKEOFF WEIGHT (LBS) OF DESIGN AIRCRAFT	11,800	11,800	209,500	209,500
RUNWAY EFFECTIVE GRADIENT	1.5%	1.5%	1.5%	1.5%
RUNWAY MAXIMUM GRADIENT	2.5%	2.5%	1.2%	1.2%
PAVEMENT DESIGN STRENGTH (in thousand lbs.) ¹	21(S)	21(S)	21(D)	21(D)
RUNWAY APPROACH SLOPE	20:1	20:1	34:1	34:1
RUNWAY END ELEVATION (MSL)	3722.2'	3797.1'	3722.2'	3800.0'
RUNWAY TOUCHDOWN ZONE ELEVATION (MSL)	3767.3'	3797.1'	3767.3'	3800.0'
RUNWAY HIGH POINT ELEVATION (MSL)	3797.1'	3797.1'	3800.0'	3851.0'
RUNWAY LOW POINT ELEVATION (MSL)	3722.2'	3722.2'	3746.0'	3746.0'
LINE OF SIGHT REQUIREMENT MET	YES	YES	YES	YES
RUNWAY LENGTH	4920'	5250'	8700'	8700'
RUNWAY WIDTH	75'	75'	150'	150'
RUNWAY BEARING (TRUE)	83.9°	263.94°	83.9°	263.94°
RUNWAY SAFETY AREA LENGTH BEYOND RUNWAY END	300'	300'	1000'	1000'
RUNWAY SAFETY AREA WIDTH	150'	150'	500'	500'
RUNWAY OBJECT FREE AREA LENGTH BEYOND RUNWAY END	300'	300'	1000'	1000'
RUNWAY OBJECT FREE AREA WIDTH	500'	500'	800'	800'
RUNWAY OBSTACLE FREE ZONE LENGTH BEYOND RUNWAY END	200'	200'	200'	200'
RUNWAY OBSTACLE FREE ZONE WIDTH	400'	400'	400'	400'
RUNWAY CENTERLINE TO HOLD BARS AND SIGNS	125'	200'	250'	250'
RUNWAY MARKING	Visual	Visual	Nonprecision	Nonprecision
STANDARD SEPARATION - RUNWAY CL TO PARALLEL TAXIWAY CL	240'	240'	400'	400'
STANDARD SEPARATION - TAXIWAY CL TO FIXED OR MOVABLE OBJECT	65.5'	65.5'	93'	93'
RUNWAY SURFACE MATERIAL	Asphalt	Asphalt	Asphalt	Asphalt
RUNWAY PAVEMENT SURFACE TREATMENT	AFSC	AFSC	AFSC	AFSC
TAXIWAY LIGHTING	MIRL	MIRL	MIRL	MIRL
TAXIWAY WIDTH	40' (35' Standard)	40' (35' Standard)	60'	60'
TAXIWAY SURFACE MATERIAL	Asphalt	Asphalt	Asphalt	Asphalt
TAXIWAY OBJECT FREE AREA WIDTH	131'	131'	186'	186'
TAXIWAY SAFETY AREA WIDTH	79'	79'	118'	118'
TAXIWAY WING TIP CLEARANCE	26'	26'	34'	34'
TAXIWAY MARKING	Centerline	Centerline	Centerline	Centerline
TAXIWAY LIGHTING	NONE	MIL	MIL	MIL
RUNWAY NAVIGATIONAL AIDS	NONE	GPS (LPV)	GPS (LPV)	GPS (LPV), ILS (18)
RUNWAY VISUAL AIDS	Rotating Beacon	Rotating Beacon	Rotating Beacon	Rotating Beacon
	PAPI-2 (7,25)	PAPI-2 (7,25)	MALSR (18)	PAPI-4 (18,36)
	Lighted Wind Cone	Lighted Wind Cone	Segmented Circle	Segmented Circle

AIRPORT SURVEY CONTROL STATIONS			
ID	PERMANENT IDENTIFIER	LATITUDE	LONGITUDE
CFT A	DH6857	32° 57' 22.805" N	109° 12' 36.464" W
CFT B	DH6855	32° 57' 25.036" N	109° 12' 15.178" W
CFT C	DH6856	32° 57' 19.804" N	109° 13' 09.531" W

CFT A SETTING: STAINLESS STEEL ROD IN SLEEVE;
CFT B AND C SETTING: SURROUNDED BY MASS CONCRETE

SURVEY CONTROL DATA FROM NATIONAL GEODETIC SURVEY
http://www.ngs.noaa.gov/cgi-bin/ds_rdradius.pl

- GENERAL NOTES:
- HORIZONTAL DATUM: NORTH AMERICAN DATUM 1983 - NAD83; VERTICAL DATUM: NORTH AMERICAN DATUM 1988 - NAVD88. FROM Z & H ENGINEERING, INC., PHOENIX, ARIZONA.
 - ALL EXISTING RUNWAY END ELEVATIONS, COORDINATES, AND BEARINGS NOTED IN THIS ALP FROM ASIS DATASHEET SYSTEMS, <http://avnwww.jcabi.gov/datasheet/>
 - SURVEY OF AIRPORT ENVIRONS PERFORMED BY SUN MAPPING LLC, JUNE 6, 2006.
 - EXISTING PROPERTY LINE SURVEYED BY AMOX LAND SURVEYORS, P.L.L.C., OF BENSON, AZ; FILED NOVEMBER 28, 2000 WITH THE GREENLEE COUNTY RECORDERS OFFICE.
 - NO OFZ PENETRATIONS
 - NO THRESHOLD SITING SURFACE PENETRATIONS
 - SEE AIRPORT SURVEY CONTROL TABLE FOR SURVEY MONUMENT DATA AND HOW PROTECTED.
 - IF AWOS SHOULD REQUIRE RELOCATION WITHIN TWENTY YEARS OF THE INSTALLATION DATE, THE COUNTY OF GREENLEE WILL PAY FOR RELOCATION COSTS.
 - ONLY FUTURE RUNWAY MARKINGS SHOWN FOR CLARITY.
 - NON-AVIATION USE REVENUE SUPPORT PARCEL AVAILABLE TO SHORT TERM LEASES NOT TO EXCEED THREE YEARS. AFTER THE INITIAL THREE YEARS LEASE TERM EXPIRES, THE SUBJECT PROPERTY CAN BE LEASED ON A MONTH TO MONTH BASIS UNTIL AN AERONAUTICAL NEED FOR THE PROPERTY OCCURS. GREENLEE COUNTY WILL COMPLY WITH CONDITIONS STATED IN THE LETTER FROM THE MANAGER OF THE FAA'S LOS ANGELES AIRPORTS DISTRICT OFFICE TO THE COUNTY DATED MAY 28, 2008.

FAA APPROVAL STAMP

Approved conditionally SEP 10 2010

Subject to comments contained in our letter dated: JUL 16 2010

Revalidated: SEP 10 2010

FEDERAL AVIATION ADMINISTRATION
Western-Pacific Region

By: *[Signature]*
Manager - LAX/ADO

FOR APPROVAL BY
Greenlee County

[Signature] 01/05/10
Mr. Philip Romanus
Engineer

RUNWAY END COORDINATES (NAD 83)			
RUNWAY	LATITUDE	LONGITUDE	
EXISTING RUNWAY 7	32° 57' 22.739" N	109° 13' 09.230" W	
EXISTING RUNWAY 25	32° 57' 27.938" N	109° 12' 11.138" W	
ULTIMATE RUNWAY 25	32° 57' 28.230" N	109° 12' 07.948" W	
ULTIMATE RUNWAY 18	32° 58' 17.620" N	109° 12' 03.173" W	
ULTIMATE RUNWAY 36	32° 56' 55.090" N	109° 12' 32.188" W	

ULTIMATE COORDINATES DERIVED FROM SURVEY PERFORMED BY SUN MAPPING, LLC, JUNE 6, 2006

No.	REVISIONS	DATE	BY	APP'D.
1	REMOVED ROUTE 78 RELOCATION; REMOVED ULTIMATE AIRPORT SERVICE ROAD; CONSOLIDATED HANGAR DEVELOPMENT PARCELS; DEPICTED EXISTING AND ULTIMATE POWER POLES AND LINES; CLOSED EXISTING AIRPORT ENTRANCE ROAD; ADDED PROPERTY ACQUISITION ACRES	6/01/12	EP	PR
2	ALP UPDATE	1/12/06	SC	PT
3	ALP UPDATE	6/29/03	KA	PT

GREENLEE COUNTY AIRPORT
AIRPORT LAYOUT PLAN
CLIFTON / MORENCI, ARIZONA

PLANNED BY: Eric S. Pfeifer
DETAILED BY: Diana L. Hopkins
APPROVED BY: James M. Harris

August 30, 2010 SHEET 2 OF 3

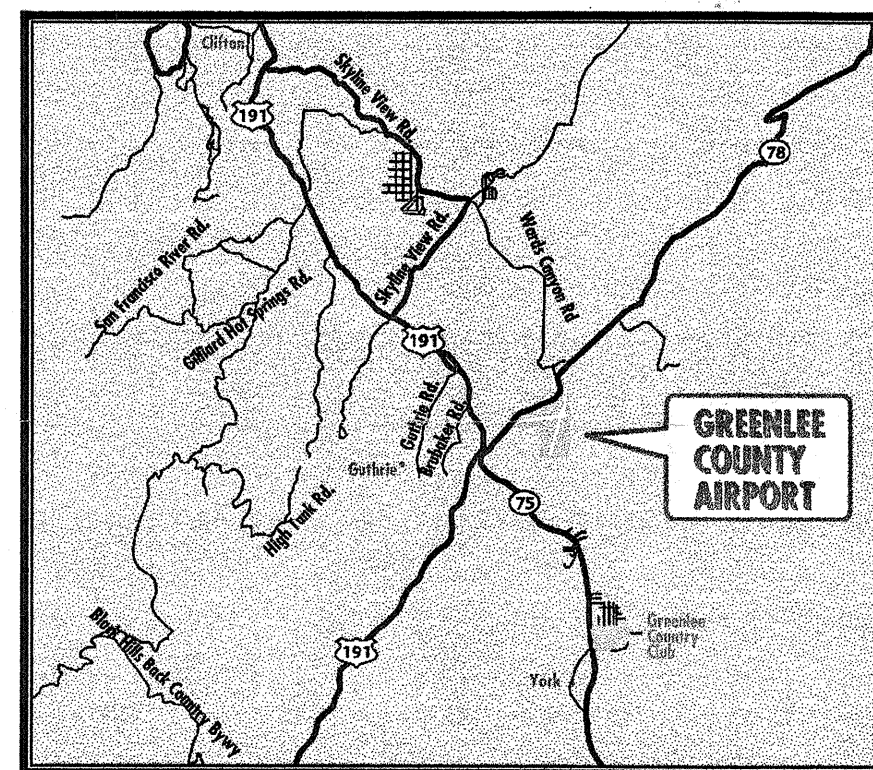
Coffman Associates
Airport Consultants
www.coffmassociates.com

GREENLEE COUNTY AIRPORT

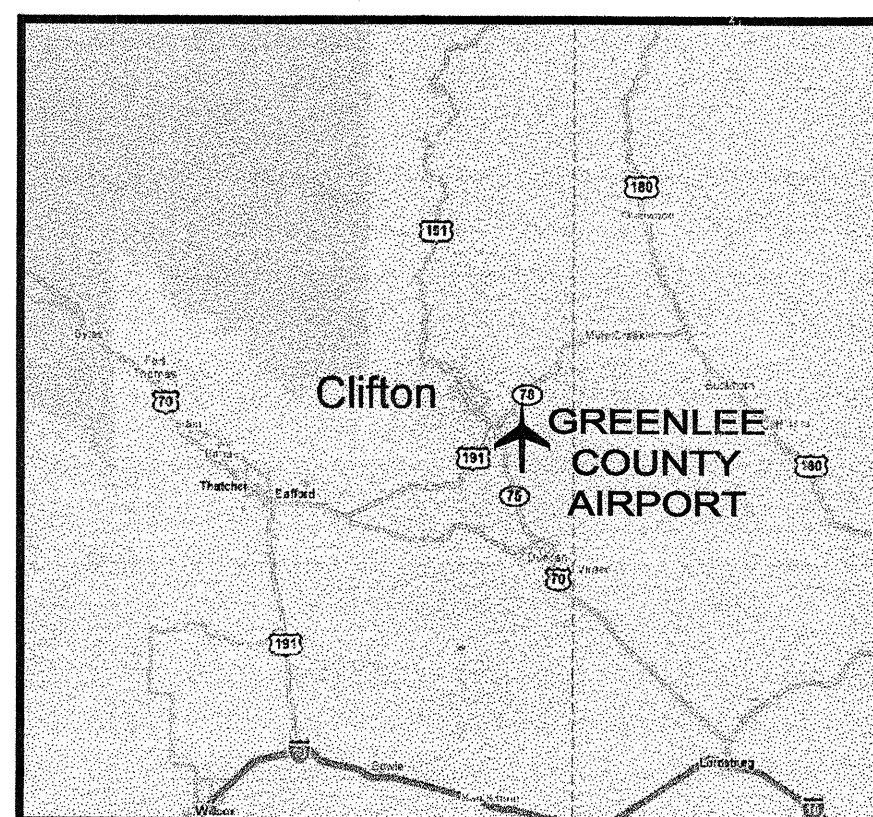
AIRPORT LAYOUT PLAN SET PREPARED FOR GREENLEE COUNTY, ARIZONA

DRAWING INDEX

1. COVER SHEET
2. AIRPORT LAYOUT DRAWING
3. EXHIBIT A

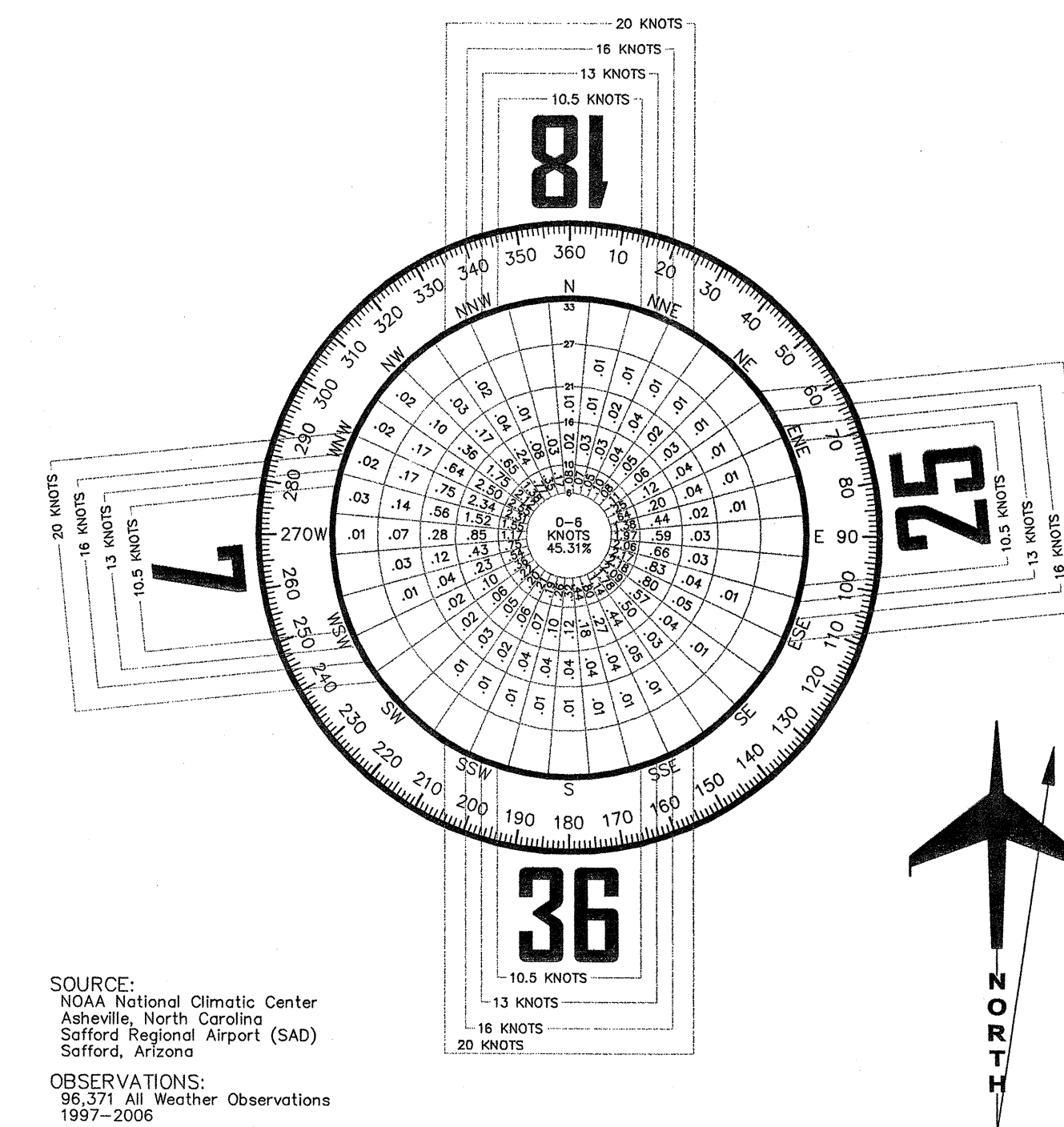


LOCATION MAP



VICINITY MAP

ALL WEATHER WIND COVERAGE				
Runways	10.5 Knots	13 Knots	16 Knots	20 Knots
Runway 7-25	94.58%	97.53%	99.19%	99.78%
Runway 18-36	81.87%	90.33%	96.43%	98.91%
Combined	57.37%	89.22%	99.81%	99.97%

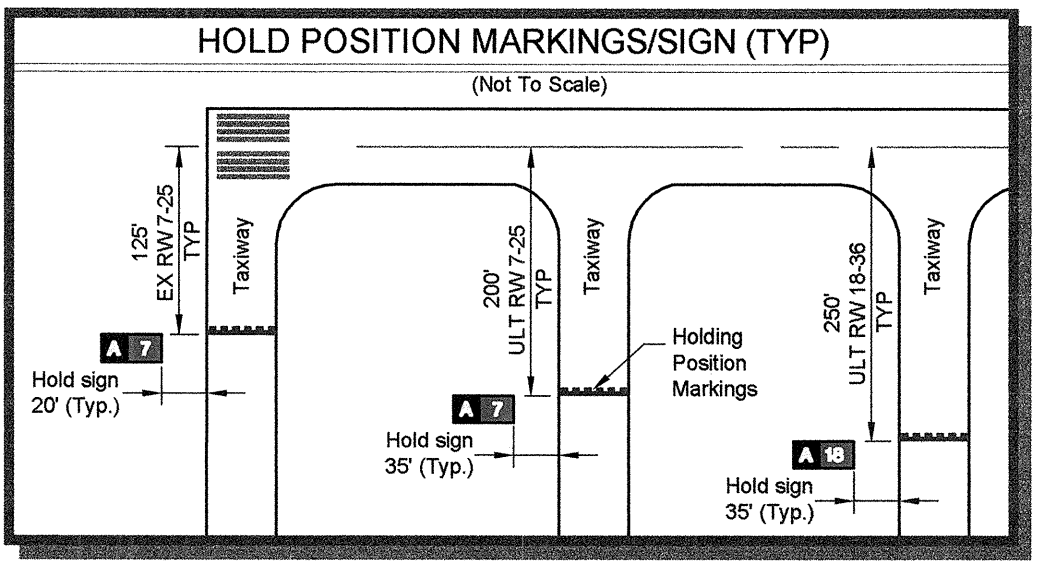
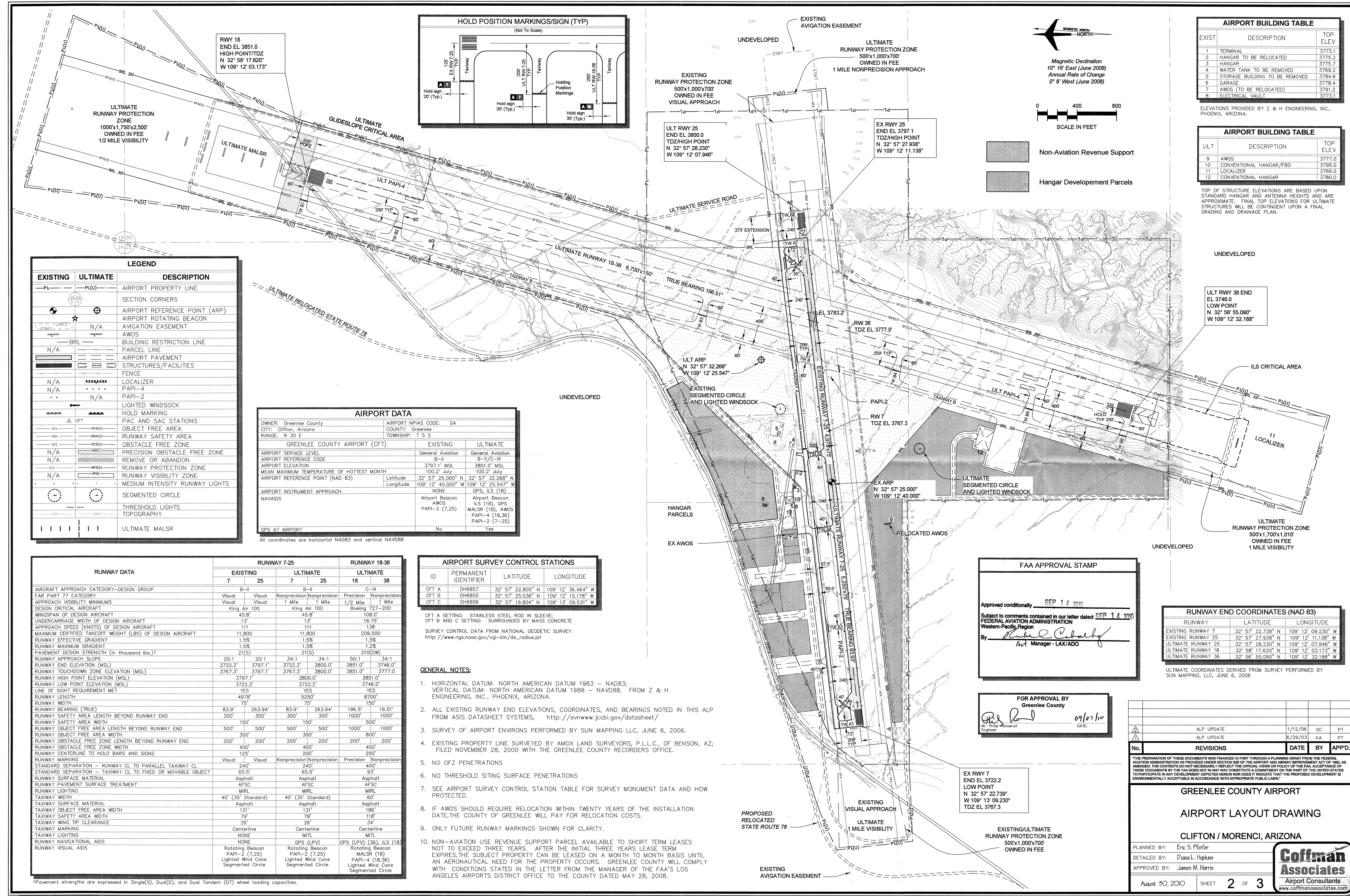


SOURCE:
NOAA National Climatic Center
Asheville, North Carolina
Safford Regional Airport (SAD)
Safford, Arizona

OBSERVATIONS:
96,371 All Weather Observations
1997-2006

Magnetic Declination
10° 20' East (December 2007)
Annual Rate of Change
0° 6' West (December 2007)

August 30, 2010



AIRPORT BUILDING TABLE		
EXIST	DESCRIPTION	TOP ELEV
1	TERMINAL	3773.1
2	HANGAR TO BE RELOCATED	3775.2
3	HANGAR	3775.7
4	WATER TANK TO BE REMOVED	3769.2
5	STORAGE BUILDING TO BE REMOVED	3784.6
6	GARAGE	3778.4
7	AWOS (TO BE RELOCATED)	3791.2
8	ELECTRICAL VAULT	3773.1

AIRPORT BUILDING TABLE		
ULT	DESCRIPTION	TOP ELEV
9	AWOS	3777.0
10	CONVENTIONAL HANGAR/FBO	3795.0
11	LOCALIZER	3766.0
12	CONVENTIONAL HANGAR	3780.0

TOP OF STRUCTURE ELEVATIONS ARE BASED UPON STANDARD HANGAR AND ANTENNA HEIGHTS AND ARE APPROXIMATE. FINAL TOP ELEVATIONS FOR ULTIMATE STRUCTURES WILL BE CONTINGENT UPON A FINAL GRADING AND DRAINAGE PLAN.

LEGEND		
EXISTING	ULTIMATE	DESCRIPTION
PL	PL(U)	AIRPORT PROPERTY LINE
		SECTION CORNERS
		AIRPORT REFERENCE POINT (ARP)
		AIRPORT ROTATING BEACON
		AVIGATION EASEMENT
		AWOS
		BUILDING RESTRICTION LINE
		PARCEL LINE
		AIRPORT PAVEMENT
		STRUCTURES/FACILITIES
		FENCE
		LOCALIZER
		PAPI-4
		PAPI-2
		LIGHTED WINDSOCK
		HOLD MARKING
		PAC AND SAC STATIONS
		OBJECT FREE AREA
		RUNWAY SAFETY AREA
		OBSTACLE FREE ZONE
		PRECISION OBSTACLE FREE ZONE
		REMOVE OR ABANDON
		RUNWAY PROTECTION ZONE
		RUNWAY VISIBILITY ZONE
		MEDIUM INTENSITY RUNWAY LIGHTS
		SEGMENTED CIRCLE
		THRESHOLD LIGHTS
		TOPOGRAPHY
		ULTIMATE MALS

AIRPORT DATA			
OWNER: Greenlee County	AIRPORT NPIAS CODE: GA		
CITY: Clifton, Arizona	COUNTY: Greenlee		
RANGE: R 30 E	TOWNSHIP: T 5 S		
GREENLEE COUNTY AIRPORT (CFT)			
AIRPORT SERVICE LEVEL	General Aviation	General Aviation	
AIRPORT REFERENCE CODE	B-II	B-II/C-III	
AIRPORT ELEVATION	3797.1' MSL	3851.0' MSL	
MEAN MAXIMUM TEMPERATURE OF HOTTEST MONTH	100.2' July	100.2' July	
AIRPORT REFERENCE POINT (NAD 83)	Latitude 32° 57' 25.000" N	Longitude 109° 12' 25.547" W	
AIRPORT INSTRUMENT APPROACH	NONE	GPS, ILS (18)	
NAVAIDS	Airport Beacon	Airport Beacon	
	AWOS	ILS (18), GPS	
	PAPI-2 (7,25)	MALS (18), AWOS	
		PAPI-4 (18,36)	
		PAPI-2 (7-25)	
GPS AT AIRPORT	No	Yes	

All coordinates are horizontal NAD83 and vertical NAVD88

RUNWAY DATA	RUNWAY 7-25		RUNWAY 18-36	
	EXISTING	ULTIMATE	EXISTING	ULTIMATE
AIRCRAFT APPROACH CATEGORY-DESIGN GROUP	B-II	B-II	C-III	
FAR PART 77 CATEGORY	Visual	Visual	Nonprecision	Nonprecision
APPROACH VISIBILITY MINIMUMS	Visual	Visual	1 Mile	1 Mile
DESIGN CRITICAL AIRCRAFT	King Air 100	King Air 100	Boeing 727-200	
WINGSPAN OF DESIGN AIRCRAFT	45.8'	45.8'	108.0'	
UNDERCARRIAGE WIDTH OF DESIGN AIRCRAFT	13'	13'	18.75'	
APPROACH SPEED (KNOTS) OF DESIGN AIRCRAFT	111	111	209.500	
MAXIMUM CERTIFIED TAKEOFF WEIGHT (LBS) OF DESIGN AIRCRAFT	11,800	11,800	209,500	
RUNWAY EFFECTIVE GRADIENT	1.5%	1.5%	1.5%	
RUNWAY MAXIMUM GRADIENT	1.5%	1.5%	1.2%	
PAVEMENT DESIGN STRENGTH (in thousand lbs.) ¹	21(S)	21(S)	21(O/W)	
RUNWAY APPROACH SLOPE	20:1	20:1	34:1	34:1
RUNWAY END ELEVATION (MSL)	3722.2'	3797.1'	3722.2'	3800.0'
RUNWAY TOUCHDOWN ZONE ELEVATION (MSL)	3767.3'	3797.1'	3767.3'	3800.0'
RUNWAY HIGH POINT ELEVATION (MSL)	3797.1'	3800.0'	3722.2'	3851.0'
RUNWAY LOW POINT ELEVATION (MSL)	3722.2'	3722.2'	3722.2'	3746.0'
LINE OF SIGHT REQUIREMENT MET	YES	YES	YES	YES
RUNWAY LENGTH	4978'	5250'	8700'	250'
RUNWAY WIDTH	75'	75'	150'	
RUNWAY BEARING (TRUE)	83.9°	263.94°	83.9°	263.94°
RUNWAY SAFETY AREA LENGTH BEYOND RUNWAY END	300'	300'	300'	1000'
RUNWAY SAFETY AREA WIDTH	500'	500'	500'	800'
RUNWAY OBJECT FREE AREA LENGTH BEYOND RUNWAY END	500'	500'	500'	1000'
RUNWAY OBJECT FREE AREA WIDTH	300'	300'	300'	800'
RUNWAY OBSTACLE FREE ZONE LENGTH BEYOND RUNWAY END	200'	200'	200'	200'
RUNWAY OBSTACLE FREE ZONE WIDTH	400'	400'	400'	400'
RUNWAY CENTERLINE TO HOLD BARS AND SIGNS	Visual	Visual	Nonprecision	Nonprecision
STANDARD SEPARATION - RUNWAY CL TO PARALLEL TAXIWAY CL	240'	240'	240'	400'
STANDARD SEPARATION - TAXIWAY CL TO FIXED OR MOVABLE OBJECT	65.5'	65.5'	93'	
RUNWAY SURFACE MATERIAL	Asphalt	Asphalt	Asphalt	
RUNWAY PAVEMENT SURFACE TREATMENT	AFSC	AFSC	AFSC	
RUNWAY LIGHTING	MIRL	MIRL	MIRL	
TAXIWAY WIDTH	40' (35' Standard)	40' (35' Standard)	60'	
TAXIWAY SURFACE MATERIAL	Asphalt	Asphalt	Asphalt	
TAXIWAY OBJECT FREE AREA WIDTH	131'	131'	186'	
TAXIWAY SAFETY AREA WIDTH	79'	79'	118'	
TAXIWAY WING TIP CLEARANCE	26'	26'	34'	
TAXIWAY MARKING	Centerline	Centerline	Centerline	
TAXIWAY LIGHTING	NONE	MIRL	MIRL	
RUNWAY NAVIGATIONAL AIDS	NONE	GPS (P-V)	GPS (P-V), ILS (18)	
RUNWAY VISUAL AIDS	Rotating Beacon	Rotating Beacon	Rotating Beacon	
	PAPI-2 (7,25)	PAPI-2 (7,25)	PAPI-2 (7,25)	
	Lighted Wind Cone	Lighted Wind Cone	Lighted Wind Cone	
	Segmented Circle	Segmented Circle	Segmented Circle	

¹Pavement strengths are expressed in Single(S), Dual(D), and Dual Tandem (DT) wheel loading capacities.

AIRPORT SURVEY CONTROL STATIONS			
ID	PERMANENT IDENTIFIER	LATITUDE	LONGITUDE
CFT A	DH6857	32° 57' 22.805" N	109° 12' 36.464" W
CFT B	DH6855	32° 57' 25.036" N	109° 12' 15.178" W
CFT C	DH6856	32° 57' 19.804" N	109° 13' 09.531" W

CFT A SETTING: STAINLESS STEEL ROD IN SLEEVE;
 CFT B AND C SETTING: SURROUNDED BY MASS CONCRETE

SURVEY CONTROL DATA FROM NATIONAL GEODETIC SURVEY
http://www.ngs.noaa.gov/cgi-bin/ds_radius.pl

- GENERAL NOTES:**
- HORIZONTAL DATUM: NORTH AMERICAN DATUM 1983 - NAD83;
 VERTICAL DATUM: NORTH AMERICAN DATUM 1988 - NAVD88. FROM Z & H ENGINEERING, INC., PHOENIX, ARIZONA.
 - ALL EXISTING RUNWAY END ELEVATIONS, COORDINATES, AND BEARINGS NOTED IN THIS ALP FROM ASIS DATASHEET SYSTEMS, <http://avnmw.jcabi.gov/datasheet/>
 - SURVEY OF AIRPORT ENVIRONS PERFORMED BY SUN MAPPING LLC, JUNE 6, 2006.
 - EXISTING PROPERTY LINE SURVEYED BY AMOX LAND SURVEYORS, P.L.L.C., OF BENSON, AZ; FILED NOVEMBER 28, 2000 WITH THE GREENLEE COUNTY RECORDERS OFFICE.
 - NO OFZ PENETRATIONS
 - NO THRESHOLD SITING SURFACE PENETRATIONS
 - SEE AIRPORT SURVEY CONTROL STATION TABLE FOR SURVEY MONUMENT DATA AND HOW PROTECTED.
 - IF AWOS SHOULD REQUIRE RELOCATION WITHIN TWENTY YEARS OF THE INSTALLATION DATE, THE COUNTY OF GREENLEE WILL PAY FOR RELOCATION COSTS.
 - ONLY FUTURE RUNWAY MARKINGS SHOWN FOR CLARITY.
 - NON-AVIATION USE REVENUE SUPPORT PARCEL AVAILABLE TO SHORT TERM LEASES NOT TO EXCEED THREE YEARS. AFTER THE INITIAL THREE YEARS LEASE TERM EXPIRES, THE SUBJECT PROPERTY CAN BE LEASED ON A MONTH TO MONTH BASIS UNTIL AN AERONAUTICAL NEED FOR THE PROPERTY OCCURS. GREENLEE COUNTY WILL COMPLY WITH CONDITIONS STATED IN THE LETTER FROM THE MANAGER OF THE FAA'S LOS ANGELES AIRPORTS DISTRICT OFFICE TO THE COUNTY DATED MAY 28, 2008.

FAA APPROVAL STAMP

Approved conditionally SEP 14 2010

Subject to comments contained in our letter dated: SEP 14 2010

FEDERAL AVIATION ADMINISTRATION
 Western-Pacific Region

By: *[Signature]*
 Asst. Manager - LAX/ADO

RUNWAY END COORDINATES (NAD 83)			
RUNWAY	LATITUDE	LONGITUDE	
EXISTING RUNWAY 7	32° 57' 22.739" N	109° 13' 09.230" W	
EXISTING RUNWAY 25	32° 57' 27.938" N	109° 12' 11.138" W	
ULTIMATE RUNWAY 25	32° 57' 28.230" N	109° 12' 07.946" W	
ULTIMATE RUNWAY 18	32° 58' 17.620" N	109° 12' 03.173" W	
ULTIMATE RUNWAY 36	32° 56' 55.090" N	109° 12' 32.188" W	

ULTIMATE COORDINATES DERIVED FROM SURVEY PERFORMED BY SUN MAPPING, LLC, JUNE 6, 2006

FOR APPROVAL BY
 Greenlee County

[Signature] 09/07/10
 DATE: 09/07/10

EX RWY 7
 END EL 3722.2
 LOW POINT
 N 32° 57' 22.739"
 W 109° 13' 09.230"
 TDZ EL 3767.3

EXISTING/ULTIMATE
 RUNWAY PROTECTION ZONE
 500'x1,000'x700'
 OWNED IN FEE

No.	REVISIONS	DATE	BY	APPD.
	ALP UPDATE	1/12/06	SC	PT
	ALP UPDATE	6/29/03	KA	PT

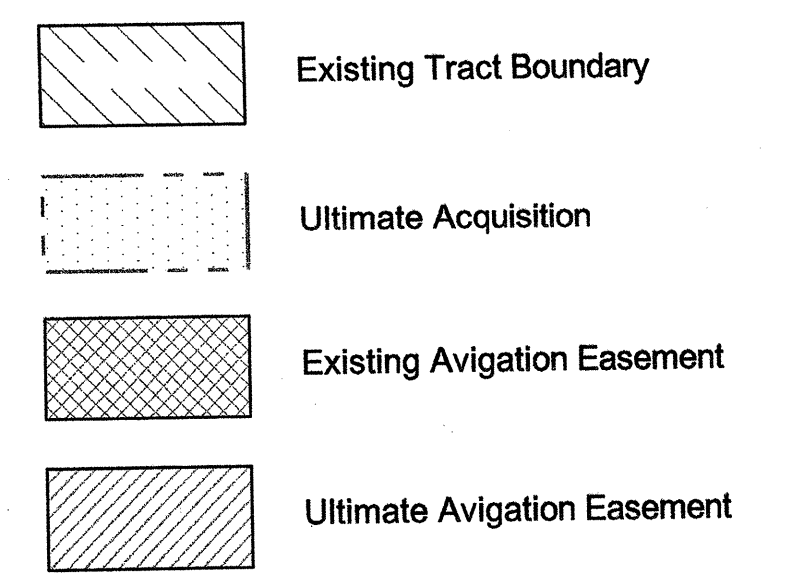
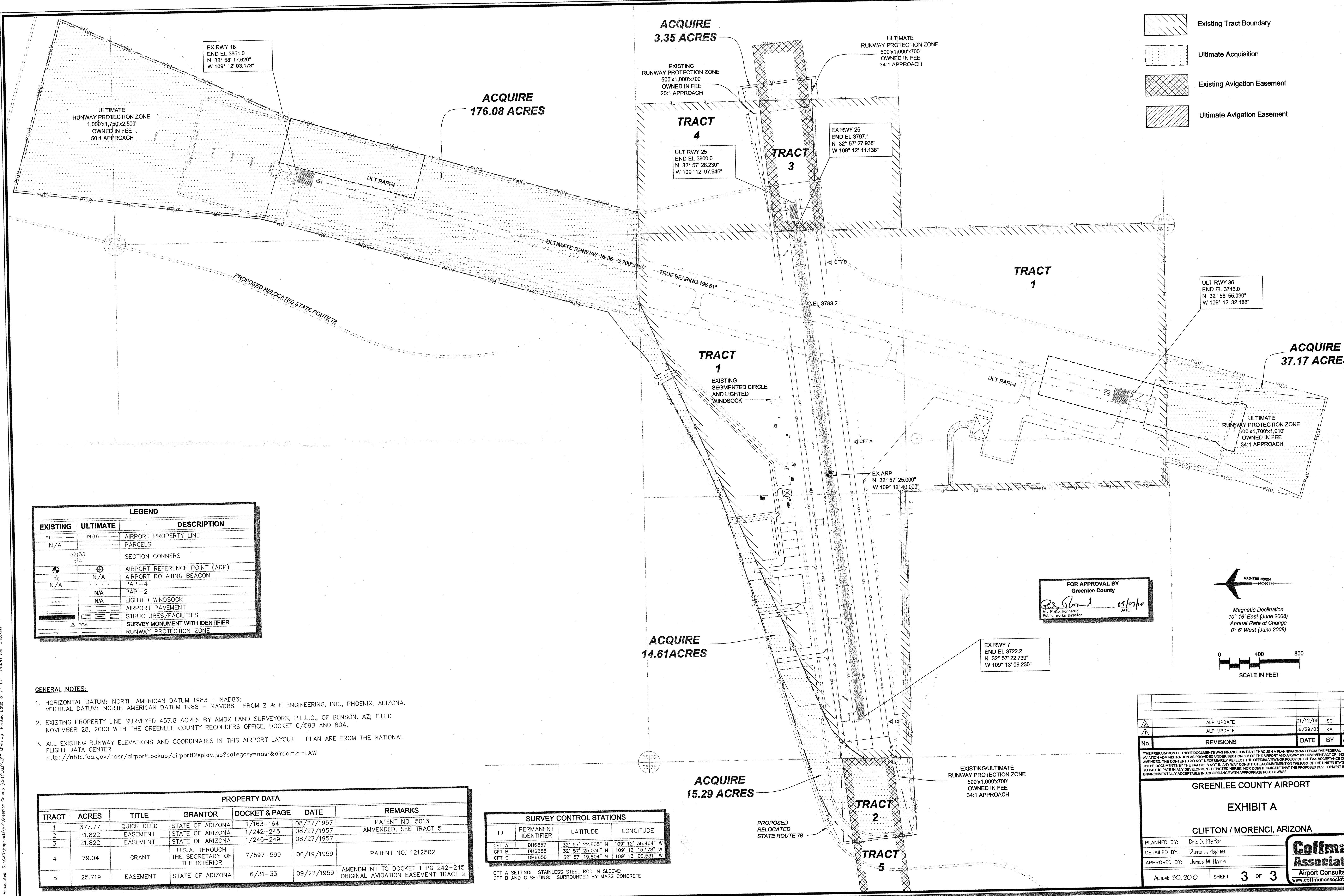
THE PREPARATION OF THESE DOCUMENTS WAS FINANCED IN PART THROUGH A PLANNING GRANT FROM THE FEDERAL AVIATION ADMINISTRATION AS PROVIDED UNDER SECTION 606 OF THE AIRPORT AND AIRWAY IMPROVEMENT ACT OF 1982, AS AMENDED. THE CONTENTS DO NOT NECESSARILY REFLECT THE OFFICIAL VIEW OR POLICY OF THE FAA. ACCEPTANCE OF THESE DOCUMENTS BY THE FAA DOES NOT IN ANY WAY CONSTITUTE A COMMITMENT ON THE PART OF THE UNITED STATES TO PARTICIPATE IN ANY DEVELOPMENT DEPICED HEREIN NOR DOES IT INDICATE THAT THE PROPOSED DEVELOPMENT IS ENVIRONMENTALLY ACCEPTABLE IN ACCORDANCE WITH APPROPRIATE PUBLIC LAWS.

GREENLEE COUNTY AIRPORT
AIRPORT LAYOUT DRAWING
 CLIFTON / MORENCI, ARIZONA

PLANNED BY: Eric S. Pfeiffer
 DETAILED BY: Diana L. Hopkins
 APPROVED BY: James M. Harris

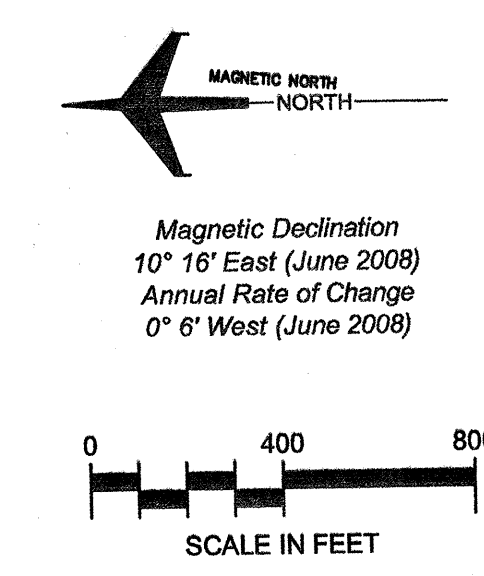
August 30, 2010 SHEET 2 OF 3

Coffman Associates
 Airport Consultants
www.coffmanassociates.com



LEGEND		
EXISTING	ULTIMATE	DESCRIPTION
PL	PL(U)	AIRPORT PROPERTY LINE
N/A		PARCELS
32133 514		SECTION CORNERS
⊙	⊙	AIRPORT REFERENCE POINT (ARP)
☆	N/A	AIRPORT ROTATING BEACON
N/A	N/A	PAPI-4
	N/A	PAPI-2
	N/A	LIGHTED WINDSOCK
		AIRPORT PAVEMENT
		STRUCTURES/FACILITIES
△	△	SURVEY MONUMENT WITH IDENTIFIER
△	△	RUNWAY PROTECTION ZONE

FOR APPROVAL BY
Greenlee County
[Signature]
Mr. Phil Reynolds
Public Works Director
DATE: 01/17/10



- GENERAL NOTES:**
- HORIZONTAL DATUM: NORTH AMERICAN DATUM 1983 - NAD83; VERTICAL DATUM: NORTH AMERICAN DATUM 1988 - NAVD88. FROM Z & H ENGINEERING, INC., PHOENIX, ARIZONA.
 - EXISTING PROPERTY LINE SURVEYED 457.8 ACRES BY AMOX LAND SURVEYORS, P.L.L.C., OF BENSON, AZ; FILED NOVEMBER 28, 2000 WITH THE GREENLEE COUNTY RECORDERS OFFICE, DOCKET 0/59B AND 60A.
 - ALL EXISTING RUNWAY ELEVATIONS AND COORDINATES IN THIS AIRPORT LAYOUT PLAN ARE FROM THE NATIONAL FLIGHT DATA CENTER
<http://nfdc.faa.gov/nosr/airportLookup/airportDisplay.jsp?category=nasr&airportid=LAW>

PROPERTY DATA						
TRACT	ACRES	TITLE	GRANTOR	DOCKET & PAGE	DATE	REMARKS
1	377.77	QUICK DEED	STATE OF ARIZONA	1/163-164	08/27/1957	PATENT NO. 5013
2	21.822	EASEMENT	STATE OF ARIZONA	1/242-245	08/27/1957	AMMENDED, SEE TRACT 5
3	21.822	EASEMENT	STATE OF ARIZONA	1/246-249	08/27/1957	
4	79.04	GRANT	U.S.A. THROUGH THE SECRETARY OF THE INTERIOR	7/597-599	06/19/1959	PATENT NO. 1212502
5	25.719	EASEMENT	STATE OF ARIZONA	6/31-33	09/22/1959	AMENDMENT TO DOCKET 1 PG 242-245 ORIGINAL AVIGATION EASEMENT TRACT 2

SURVEY CONTROL STATIONS			
ID	PERMANENT IDENTIFIER	LATITUDE	LONGITUDE
CFT A	DH6857	32° 57' 22.805" N	109° 12' 36.484" W
CFT B	DH6855	32° 57' 25.036" N	109° 12' 15.178" W
CFT C	DH6856	32° 57' 19.804" N	109° 13' 09.531" W

CFT A SETTING: STAINLESS STEEL ROD IN SLEEVE;
CFT B AND C SETTING: SURROUNDED BY MASS CONCRETE

No.	REVISIONS	DATE	BY	APP'D.
	ALP UPDATE	01/12/08	SC	PT
	ALP UPDATE	06/29/03	KA	PT

GREENLEE COUNTY AIRPORT
EXHIBIT A
CLIFTON / MORENCI, ARIZONA

PLANNED BY: Eric S. Pfeifer
DETAILED BY: Diana L. Hopkins
APPROVED BY: James M. Harris

August 30, 2010 SHEET 3 OF 3

Coffman Associates
Airport Consultants
www.coffmanassociates.com

Coffman Associates, R:\oad\Wp\oad\Wp\Greenlee County\CFT\ALP\GET_APL.dwg Printed Date: 8-27-10 11:48:41 AM D:\hpl\...