

### Runway Data

EXISTING	ULTIMATE	EXISTING	ULTIMATE
<b>RUNWAY 3-21</b>	<b>RUNWAY 3R-21L</b>	---	<b>RUNWAY 3L-21R</b>
Runway Category/ Airplane Design Group	C-III	Same	B-II
Runway True Azimuth	40.65° True	Same	40.65° True
Maximum Runway Elevation (MSL)	6,608.7 feet	Same	---
Runway Dimensions	8,999' x 150'	10,000' x 150'	5,600' x 75'
Runway Instrumentation/ FAR Part 77 Category	Precision/Visual	Same	Visual/Visual
Approach Visibility Minimums	1/2-Mile/1-Mile	Same	1-Mile/1-Mile
Approach Slope	50:1/20:1	Same	20:1/20:1
Displaced Threshold	None	Same	None
Runway Stopway	None	200' x 200' (Rwy 3R)	None
Runway Safety Area (RSA)	10,999' x 500'	12,000' x 500'	6,200' x 150'
RSA Distance Beyond Runway End	1,000'	Same	300'
Runway Object Free Area (OFA)	10,999' x 800'	12,000' x 800'	6,200' x 500'
OFA Distance Beyond Runway End	1,000'	Same	300'
Runway Obstacle Free Zone (ROFZ)	9,399' x 400'	10,400' x 400'	6,000' x 400'
ROFZ Distance Beyond Runway End	200'	Same	200'
Runway Pavement Strength (Thousands of lbs.)	88(S), 108 (D), 160 (O)	Same	12.5 (S)
Runway Pavement Material	Asphalt	Same	Asphalt
Runway Markings	Precision/Non-Precision	Same	Visual/Visual
Runway Gradient	0.8%	Same	1.07%
Runway Lighting	MIRL	Same	MIRL
Approach Lighting System (ALS)	MALSR (Rwy 3)	Same	None
Runway E to Parallel Taxiway E Separation	407'	Same	300'
Runway E to Parallel Runway E Separation	---	700'	---
Taxiway E to Fixed or Movable Object	93'	Same	65.5'
Taxiway E to Parallel Taxiway E Separation	152'	Same	105'
Taxiway Pavement Material	Asphalt	Same	Asphalt
Taxiway Lighting	MIL	Same	MIL
Taxiway Markings	Centerline	Same	Centerline
Taxiway Object Free Area Width	186'	Same	131'
Taxiway Safety Area Width	118'	Same	79'
Taxiway Wingtip Clearance	34'	Same	26'
NAVAIDS	VOR-DME, ILS, GPS	Same	None
Approach Visual Aids	VASI-4L (Rwy 21)	VASI-4L (Rwy 21L)	---
Touchdown Zone Elevation (TDZE)	6,556.2' / 6,608.7'	Same	6,620.0' / 6,630.0'
Design Act - B-737-500, APCH SP kts	N/A	---	N/A
Design Act - B-737-500, (Wing span ft)	94.8'	---	N/A
Design Act - B-737-500, MAX CTOW	133,500 lbs	---	N/A
Line-of-Sight Requirement	MET	---	N/A

### Airport Data

EXISTING	ULTIMATE
<b>AIRPORT INFORMATION</b>	
Airport Name (ICAO Identifier)	Grand Canyon National Park Airport (GCN)
Airport Reference Code (ARC)	C-III
Range and Township/ Sections	T 30 N, R 2 E / 23, 24, 25, 26, 27, 34, 35
County	Cocconino County, AZ
Airport Sponsor	ADOT, Aeronautics Division
NPAAS Category	Primary (PR) Commercial Service
Design Aircraft (Type/Model)	Boeing 737-800
ARFF Index	Index B
Airport Elevation - Mean Sea Level (MSL)	6,608.7 feet
Airport Reference Point (ARP)	35-57-08.50 N, 112-08-49.10 W
Mean Maximum Monthly Air Temperature (F)	84° F (July)
Airport and Terminal NAVIADS	VOR-DME
Instrument Approach Procedures	ILS, VOR-DME, GPS
Weather Reporting System	ASOS-III

### Runway End Coordinates

RUNWAY END	EXISTING	ULTIMATE	ELEVATION (FT)	HIGH/LOW POINTS
Runway 3	35-56-34.74 N, 112-09-24.70 W	---	6,532.8'	(E) LOW POINT
Runway 21	35-57-42.23 N, 112-08-13.42 W	SAME	6,608.7'	(E) HIGH POINT
Runway 3L	---	35-57-04.72 N, 112-09-04.24 W	6,565.0'	---
Runway 21R	---	35-57-46.74 N, 112-08-19.87 W	6,608.7'	---
Runway 3R	---	35-56-27.20 N, 112-09-32.65 W	6,532.8'	(U) LOW POINT

Existing and ultimate runway end coordinates reflect NGS 405 Survey dated 11-05-99 in North American Datum (NAD 83) and North American Vertical Datum (NAVD 88).

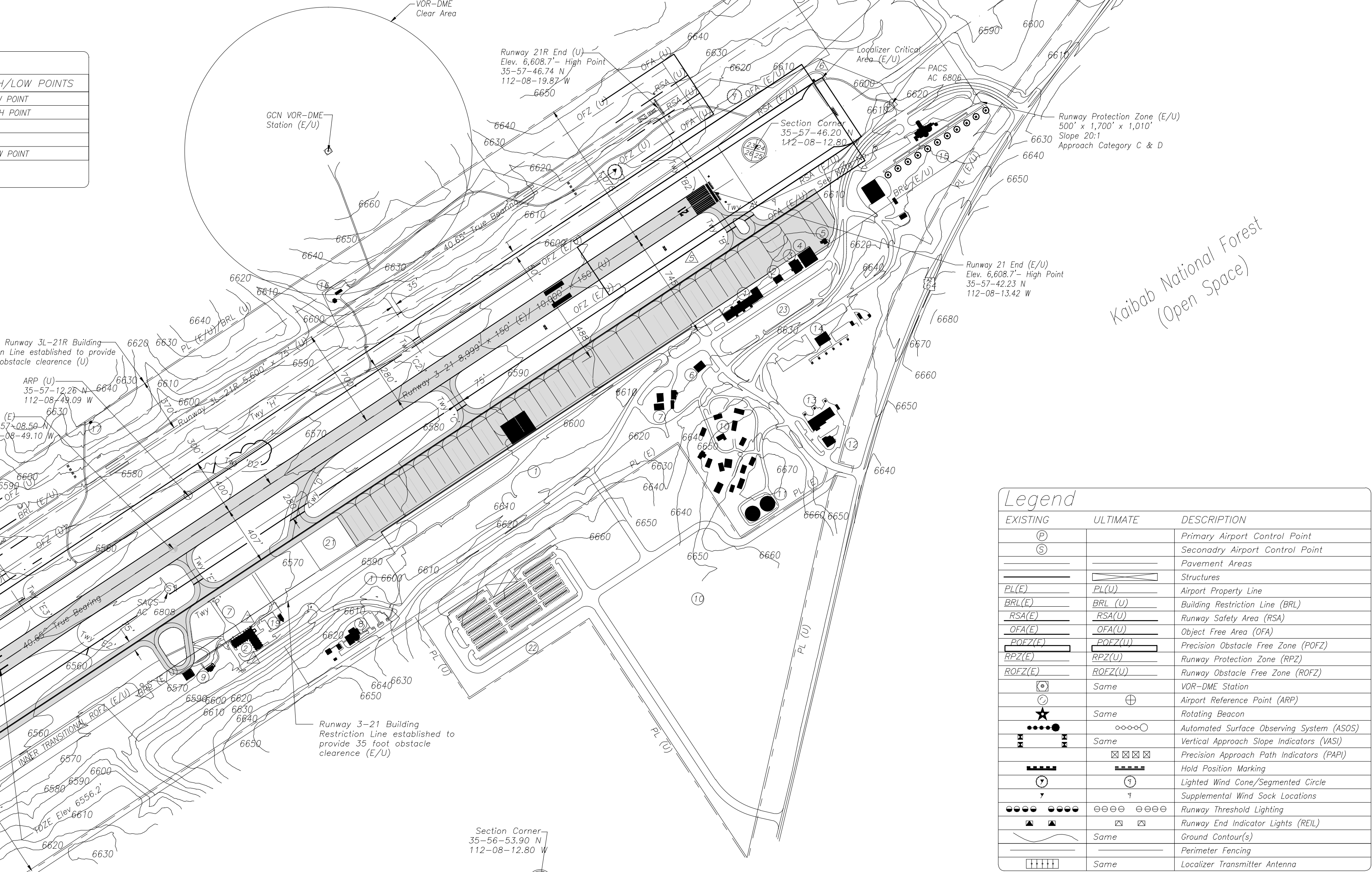
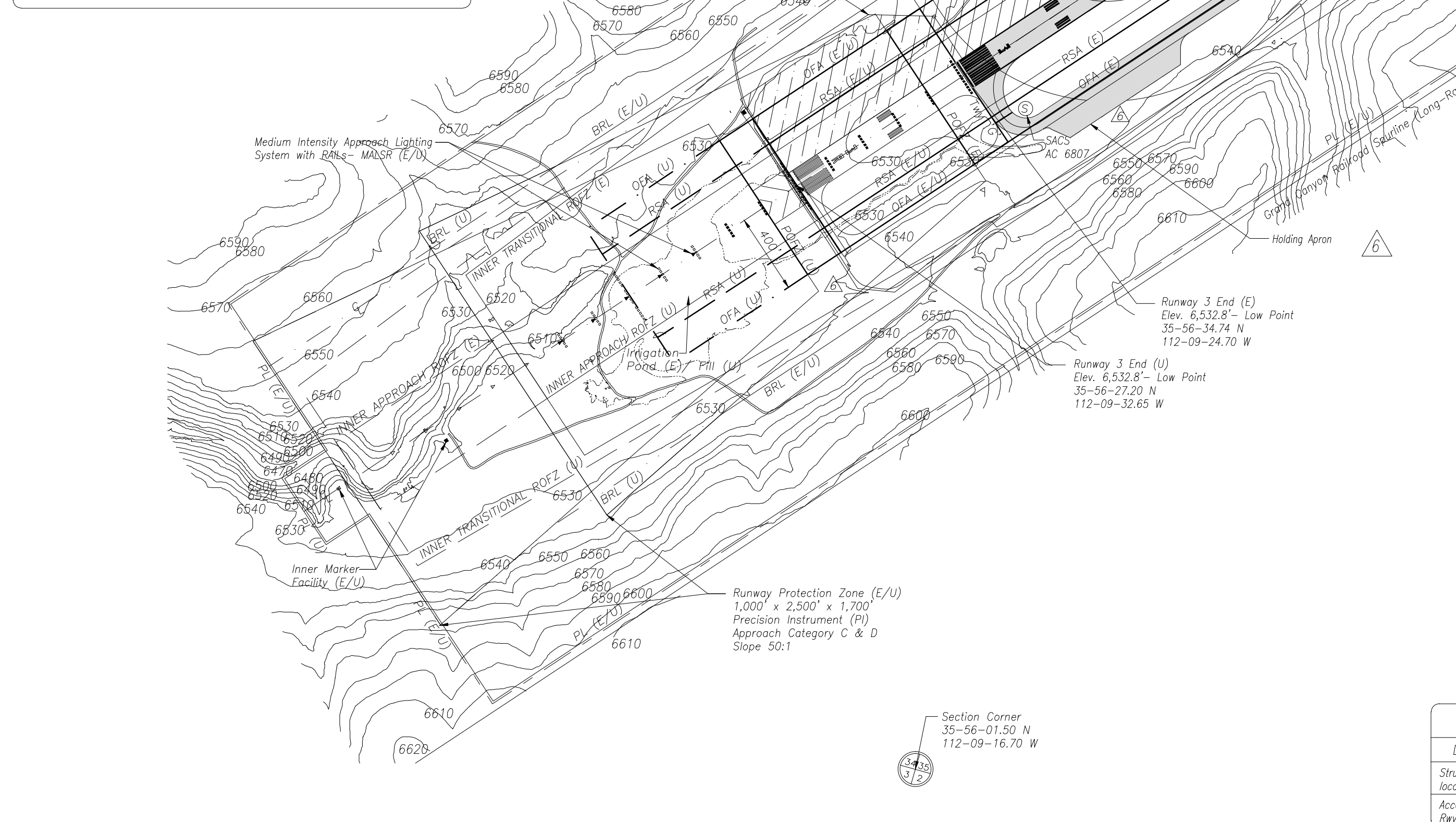
### PACS & SACS

ID NO.	GEODEIC COORDINATES	MARKER	ELEV.
PACS AC6806	35-57-51.189 N, 112-08-01.121 W	MP	6,619.5 feet
SACS AC6807	35-56-33.964 N, 112-09-20.570 W	SD	6,530.1 feet
SACS AC6808	35-57-05.551 N, 112-08-46.202 W	SD	6,561.0 feet

PACS - Primary Airport Control Station  
SACS - Secondary Airport Control Station  
MP - Metal Rod  
SD - Survey Disk  
See General Notes #10

### General Notes

- There are no OFZ Object Penetrations.
- There are no Threshold Siting Surface Object Penetrations.
- The existing passenger terminal building is inadequate to accommodate future peak hour passenger demand and is recommended to be replaced. The southwestern portion of the terminal area complex, spanning the southwestern apron area, will be ultimately reserved for future aviation/terminal building expansion area. Future location, layout, capital outlays, project scheduling and space allocations will be generated as part of a future terminal area plan project.
- The Pashion Grand Canyon Helicopter structure is located within the Runway 21 RPZ. Places of public assembly such as this represent land uses that are prohibited from occupying space within the RPZ. The Pashion structure and associated facilities are recommended to be removed and relocated. Future location, layout and timeframe for relocation will be determined as part of a future terminal area plan project.
- The airport access road located to the north of the terminal area complex encroaches upon the Runway 21 OFA which represents a non-standard condition that requires mitigation. The access road is recommended to be realigned and relocated out side of the future Runway 21R OFA. Ultimate alignment, cost and scheduling for improvement will be determined as part of a future terminal area plan project.
- Due to the remoteness of the Airport from adequate accommodations to support housing to meet the unique requirements of a commercial service airport, a residential area is designated to support the FAA and airport personnel that provide 24/7 operational capability for the Airport.
- As part of an initiative to reduce automobile congestion within the Park Grand Canyon Railroad, located in Williams, proposed a regional transportation plan that would provide railroad access to the airport, as well as shuttle bus surface transportation to/from the Grand Canyon Village to manage vehicular flow during peak tourism periods. Approximately 25 acres of NFS land located to the southwest of terminal area complex would be acquired to accommodate auto parking facilities, a railroad staging area and depot, as well as a rail station in the event that this long-range transportation plan would be successfully implemented.
- Contour elevation information derived from Western Air Maps planimetric mapping (June 2005).
- A survey of structural height on the airport will be part of a future AIP grant.
- The PACS/SACS monuments will be protected as part of a future AIP grant.
- The North Point Arrows on Sheets 2 through 11 are oriented correctly for the drawing.
- The LINE OF SIGHT requirement is met.



### Legend

EXISTING	ULTIMATE	DESCRIPTION
(P)	(P)	Primary Airport Control Point
(S)	(S)	Secondary Airport Control Point
---	---	Pavement Areas
---	---	Structures
PL(E)	PL(U)	Airport Property Line
BRL(E)	BRL(U)	Building Restriction Line (BRL)
RSA(E)	RSA(U)	Runway Safety Area (RSA)
OFA(E)	OFA(U)	Object Free Area (OFA)
POFZ(E)	POFZ(U)	Precision Obstacle Free Zone (POFZ)
RPZ(E)	RPZ(U)	Runway Protection Zone (RPZ)
ROFZ(E)	ROFZ(U)	Runway Obstacle Free Zone (ROFZ)
(V)	(V)	VOR-DME Station
(A)	(A)	Airport Reference Point (ARP)
(R)	(R)	Rotating Beacon
(ASOS)	(ASOS)	Automated Surface Observing System (ASOS)
(VASI)	(VASI)	Vertical Approach Slope Indicators (VASI)
(PAPI)	(PAPI)	Precision Approach Path Indicators (PAPI)
(H)	(H)	Hold Position Marking
(LWC)	(LWC)	Lighted Wind Cone/Segmented Circle
(REL)	(REL)	Runway End Indicator Lights (REL)
(G)	(G)	Ground Contour(s)
(F)	(F)	Perimeter Fencing
(LTA)	(LTA)	Localizer Transmitter Antenna

### Buildings/Facilities

EXISTING	ULTIMATE	DESCRIPTION
(1)	(1)	Passenger Terminal Building Expansion Area (See General Note No. 3)
(2)	(2)	Relocate ARFF Station (Relocated)
(3)	(3)	Grand Canyon Airlines (GCA) Terminal
(4)	(4)	GCA FBO Hangar
(5)	(5)	Fuel Farm
(6)	(6)	ADOT/FAA Airport Administration Building
(7)	(7)	Operations/SRE Buildings (ARFF - Ultimate)
(8)	(8)	FAA ATCT Facility
(9)	(9)	NPS Clear Span Hangar/Office Trailer
(10)	(10)	ADOT Employee Residential Area (See General Note No. 6)
(11)	(11)	Airport Water Supply Tanks
(12)	(12)	Peshloki Trading Post
(13)	(13)	Maverick Helicopter Tours
(14)	(14)	Kenai Helicopter Service
(15)	(15)	Pashion Grand Canyon Helicopters (See General Note No. 4)
(16)	(16)	Remove FAA ATCT (Abandoned)
(17)	(17)	Remove Remote Communications Outlet - RCO (Abandoned)
(18)	(18)	Airfield Lighting Electrical Vault
(19)	(19)	Aircraft De-icing Pad
(20)	(20)	Terminal Area Apron Expansion
(21)	(21)	Railroad Depot/Staging Area (See General Note No. 7)
(22)	(22)	Passenger Terminal Building Auto Parking Area

### FAA Disclaimer

The contents of this plan do not necessarily reflect the official views or policy of the Federal Aviation Administration (FAA). Acceptance of this document by the FAA does not in any way constitute a commitment on the part of the United States to participate in any development depicted herein nor does it indicate that the proposed development is environmentally acceptable in accordance with appropriate public law.

### Sponsor Approval Stamp

FOR APPROVAL BY:

Arizona Department of Transportation, Administrative Services Division

SIGNED BY: \_\_\_\_\_ DATED: \_\_\_\_\_

Sonya Herrera  
Division Director

### FAA Approval Stamp

### ALP Revisions

NO.	DESCRIPTION	DATE	REVISED BY	APPROVED BY
1	ALP Update	11/06/95	CA	ADDY/FAA
2	ALP Update	08/31/98	CA	ADDY/FAA
3	ALP revision per FAA-WPR letter Feb. 22, 2006	04/12/06	ADOT	ADDY/FAA
4	ALP Update - Add Future Twp P Holding Apron	02/15/09	STANTEC CONSULTING	ADDY/FAA
5	ALP Update - Catchment Basin Removed	02/04/13	DIBBLE ENGINEERING	ADDY/FAA
6	ALP Update - Twp P Holding Apron & Perim Rd.	10/11/13	DIBBLE ENGINEERING	ADDY/FAA
7	ALP Update - ARFF Station Relocated	10/11/13	DIBBLE ENGINEERING	ADDY/FAA

### Deviations from FAA Airport Design Standards

DEVIATION DESCRIPTION	AFFECTED DESIGN STANDARD	STANDARD	PROPOSED DISPOSITION
Structure and auto parking area located within Rwy 21 RPZ	FAA AC 150/5300-13, Airport Design, Change 8 Section 212, Paragraphs 2 (a)(b)	Structures/ parking area are prohibited from occupying RPZ and OFA/XOFA	Removal and relocation
Access road located within the Rwy 21 OFA/XOFA	FAA AC 150/5300-13, Airport Design, Change 8 Section 307, Runway Object Free Area	Access road is not to be placed within the OFA/XOFA	Relignment and relocation

**BUR** BUCHER, WILLIS & RATLIFF CORPORATION  
ENGINEERS PLANNERS ARCHITECTS  
903 East 104th Street, Suite 900, Kansas City, MO 64131-3451 800.748.8276 www.burcorp.com

**Kimley-Horn and Associates, Inc.**  
© 2008 KIMLEY-HORN AND ASSOCIATES, INC.  
Suite 300, 7878 N. 16th Street, Phoenix, AZ 85020 602.944.3500 www.kimley-horn.com

Planned By: MAW Drawn By: MAW Reviewed By: BCR  
FAA AIP Project No. 03-04-0019-20 & 21  
BWR Project No. 2003-0074.01

Arizona Department of Transportation  
Aeronautics Division

Grand Canyon National Park Airport  
Airport Layout Drawing

ADOT

Sheet 2 of 11  
February 15, 2009

J:\2011\01135 GRAND CANYON AIRPORT BUSIN REMOVAL\CAD\CAD\PLP\_2009 (REV. 2014.01.24).DWG  
User: January 24, 2014 9:22:28 AM