

AIRPORT LAYOUT PLAN

FOR

MESA-FALCON FIELD AIRPORT

Mesa, Arizona

DEVIATIONS FROM STANDARDS

DEVIATION DESCRIPTION	AFFECTED DESIGN STANDARD	STANDARD	EXISTING	PROPOSED DISPOSITION
-----------------------	--------------------------	----------	----------	----------------------

SEE SHEET 4

RUNWAY DATA TABLE

	RUNWAY 4R-22L		RUNWAY 4L-22R	
	EXISTING	ULTIMATE	EXISTING	ULTIMATE
AIRCRAFT APPROACH CATEGORY-DESIGN GROUP	B-II	B-II	B-I	B-II
APPROACH REFERENCE CODE (APRC)	B/II/5000	B/II/5000	B/I/5000	B/II/5000
DEPARTURE REFERENCE CODE (DPRC)	B/II	B/II	B/I (S)	B/II
CRITICAL AIRCRAFT	CITATION II	CITATION II	KING AIR 100	CITATION II
CRITICAL AIRCRAFT WINGSPAN (FEET)	51.7	51.7	45.8	51.7
CRITICAL AIRCRAFT UNDERCARRIAGE WIDTH (FEET)	17.6	17.6	7.7	17.6
CRITICAL AIRCRAFT APPROACH SPEED (KNOTS)	108	108	111	108
CRITICAL AIRCRAFT MAXIMUM CERTIFIED TAKEOFF WEIGHT (1,000 LBS.)	13.3	13.3	16.7	13.3
APPROACH VISIBILITY MINIMUMS AND TYPE OF APPROACH (LOWEST)	1 Mile / NP	1 Mile / NP	1 Mile / NP	1 Mile / NP
F.A.R. PART 77 CATEGORY	ANP	ANP	ANP	ANP
PERCENTAGE OF WIND COVERAGE (ALL WEATHER IN MPH)	YES	YES	YES	YES
LINE OF SIGHT REQUIREMENT MET	YES	YES	YES	YES
MAXIMUM ELEVATION (ABOVE MSL)	1394.0	1394.0	1386.0	1386.0
LOWEST ELEVATION (ABOVE MSL)	1365.4	1365.4	1365.7	1365.7
RUNWAY DIMENSIONS	5,099.89' x 100'	5,099.89' x 100'	3,799.59' x 75'	3,799.59' x 75'
RUNWAY BEARING (TRUE BEARING - DECIMAL DEGREES)	51.17	231.18	51.15	231.16
RUNWAY APPROACH SURFACES (F.A.R. PART 77)	34:1	34:1	34:1	20:1
RUNWAY END ELEVATION (NAVD 88) - SEE ALSO THE RUNWAY END DATA TABLE	1365.4	1394.0	1365.7	1386.0
RUNWAY THRESHOLD DISPLACEMENT	0'	0'	0'	0'
RUNWAY THRESHOLD SITING REQUIREMENTS (AC 150/5300-13A, TABLE 3-2)	4	3	2	2
RUNWAY STOPWAY	NONE	NONE	NONE	NONE
RUNWAY SAFETY AREA WIDTH (RSA) - STANDARDS/EXISTING	150' / 150'	150' / 150'	120' / 120'	150' / 150'
RUNWAY SAFETY AREA (RSA) BEYOND R/WY STOP END - STANDARDS/EXISTING	300' / 300'	300' / 300'	240' / 240'	300' / 300'
RUNWAY OBSTACLE FREE ZONE WIDTH (OFZ)	400'	400'	250'	400'
RUNWAY OBSTACLE FREE ZONE (OFZ) BEYOND RUNWAY STOP END	200'	200'	200'	200'
RUNWAY OBJECT FREE AREA WIDTH (OFA)	500'	500'	400'	500'
RUNWAY OBJECT FREE AREA (OFA) BEYOND RUNWAY STOP END	300'	300'	240'	300'
RUNWAY PAVEMENT SURFACE MATERIAL (AND ADOT PCI RATING/DATE)	ASPHALT (100/6-2014)	ASPHALT	ASPHALT (66/5-2013)	ASPHALT
RUNWAY PAVEMENT STRENGTH (IN THOUSAND LBS.)	38(S)/60(D)/90(DT)	38(S)/60(D)/90(DT)	12.5(S)	30(S)
RUNWAY EFFECTIVE GRADIENT	0.56%	0.56%	0.53%	0.53%
RUNWAY TOUCHDOWN ZONE ELEVATION (ABOVE MSL)	1383.4	1394.0	1382.7	1386.0
RUNWAY MARKING	NONPRECISION	NONPRECISION	BASIC	NONPRECISION
RUNWAY LIGHTING	MIRL	MIRL	MIRL	MIRL
RUNWAY APPROACH LIGHTING	NONE	NONE	NONE	NONE
RUNWAY TO TAXIWAY SEPARATION (FROM CENTERLINE TO CENTERLINE)	250'	250'	125'	200'
RUNWAY HOLD LINE POSITION (FROM RUNWAY CENTERLINE)	200'	200'	105'	200'
TAXIWAY TO TAXIWAY SEPARATION (FROM CENTERLINE TO CENTERLINE)	105'	105'	65.5'	65.5'
TAXIWAY CENTERLINE TO FIX OR MOVEABLE OBJECT	65.5'	65.5'	65.5'	65.5'
TAXIWAY LIGHTING	MIL	MIL	MIL	MIL
TAXIWAY MARKING	CENTERLINE/SIGNAGE	CENTERLINE/SIGNAGE	CENTERLINE/SIGNAGE	CENTERLINE/SIGNAGE
TAXIWAY SURFACE MATERIAL	ASPHALT	ASPHALT	ASPHALT	ASPHALT
TAXIWAY WING TIP CLEARANCE	25'	25'	40'	40'
TAXIWAY WIDTH	50'	50'	79'	79'
TAXIWAY SAFETY AREA WIDTH	131'	131'	131'	131'
TAXIWAY OBJECT FREE AREA WIDTH	PAPI 4-L (4*)PAPI 4-L (4*)PAPI 4-L (4*)PAPI 4-L (4*)	PAPI 4-L (4*)PAPI 4-L (4*)PAPI 4-L (4*)PAPI 4-L (4*)	PAPI 2-L (4*)PAPI 2-L (4*)PAPI 2-L (4*)PAPI 2-L (4*)	PAPI 2-L (4*)PAPI 2-L (4*)PAPI 2-L (4*)PAPI 2-L (4*)
RUNWAY VISUAL NAVIGATIONAL AIDS	REIL	REIL	REIL	REIL
RUNWAY INSTRUMENT NAVIGATIONAL AIDS	GPS	GPS	GPS	GPS
TYPE OF AERONAUTICAL SURVEY REQUIRED FOR APPROACH	NVG	NVG	NVG	NVG
RUNWAY PROTECTION ZONE (RPZ) DIMENSIONS	500x1000x700	500x1000x700	500x1000x700	500x1000x700

*Pavement strengths are expressed in Single(S), Dual(D) and Dual Tandem(DT) wheel loading capacities.

INDEX OF DRAWINGS

1	TITLE SHEET	6	RUNWAY APPROACH ZONE PROFILES / RUNWAY PROFILES
2	AIRPORT LAYOUT DRAWING	7	INNER PORTION OF RUNWAY 4R-22L APPROACH SURFACE DRAWING
3	TERMINAL AREA DRAWING - SOUTH	8	INNER PORTION OF RUNWAY 4L-22R APPROACH SURFACE DRAWING
4	TERMINAL AREA DRAWING - NORTH	9	ON-AIRPORT LAND USE PLAN
5	AIRPORT AIRSPACE DRAWING (FAR PART 77)	10	HORIZONTAL AND VERTICAL CONTROL DRAWING / AIRPORT PROPERTY MAP

AIRPORT DATA TABLE

MESA-FALCON FIELD AIRPORT (FFZ)		EXISTING	ULTIMATE
CITY:	MESA, ARIZONA		
COUNTY:	MARICOPA, ARIZONA		
RANGE:	6 EAST		
TOWNSHIP:	1 NORTH		
STATE AND NPAS AIRPORT SERVICE LEVEL		RELIEVER (R)	RELIEVER (R)
AIRPORT REFERENCE CODE		B-II	B-II
AIRPORT ELEVATION		1394.0	1394.0
AIRPORT REFERENCE POINT (ARP)	Latitude	33° 27' 39.3774" N	33° 27' 39.3774" N
COORDINATES (NAD 83)	Longitude	111° 43' 42.4117" W	111° 43' 42.4117" W
MEAN MAXIMUM TEMPERATURE OF HOTTEST MONTH		106° F (July)	106° F (July)
MISCELLANEOUS FACILITIES		ASOS ROTATING BEACON	ASOS ROTATING BEACON
MAGNETIC DECLINATION (06-01-2015 WMM MODEL)		10'28" E (0.5' W/YEAR)	
GPS Approach		4R/22L	4R/22L

RUNWAY END DATA

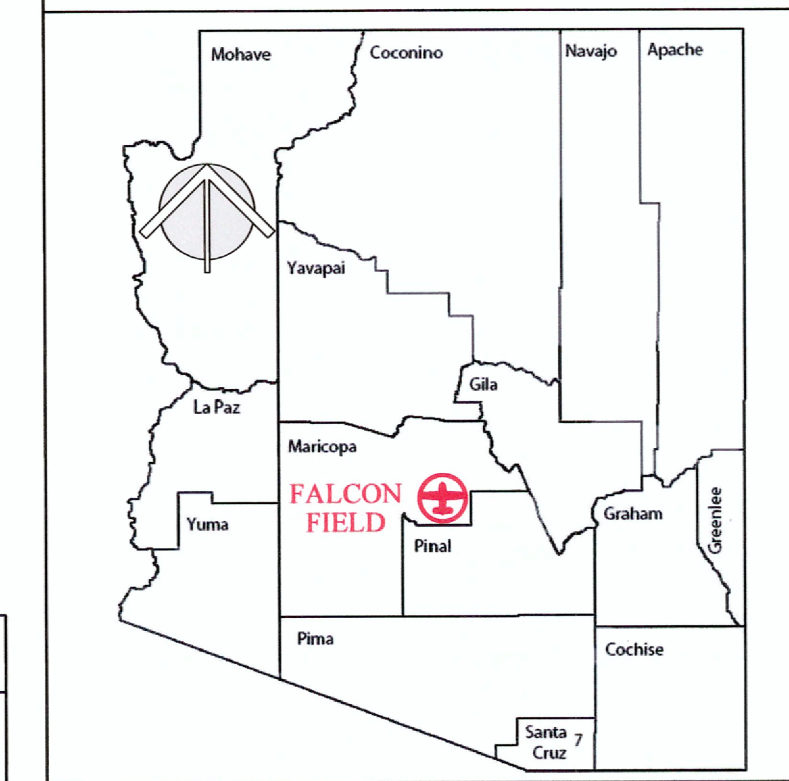
RUNWAY	EXISTING		ULTIMATE	
	ELEV	LAT/LONG	ELEV	LAT/LONG
Runway 4R	1365.4	33° 27' 21.2523" N 111° 44' 02.6928" W	1365.4	33° 27' 21.2523" N 111° 44' 02.6928" W
Runway 22L	1394.0	33° 27' 52.8854" N 111° 43' 15.7950" W	1394.0	33° 27' 52.8854" N 111° 43' 15.7950" W
Runway 4L	1365.7.4	33° 27' 29.8945" N 111° 44' 03.0434" W	1365.7	33° 27' 29.8945" N 111° 44' 03.0434" W
Runway 22R	1386.0	33° 27' 53.4736" N 111° 43' 28.1145" W	1386.0	33° 27' 53.4736" N 111° 43' 28.1145" W

*GEODETIC DATUM:
ARIZONA CENTRAL STATE PLANE DATUM, NAD83 HORIZ./NAVD88 VERTICAL

DECLARED DISTANCES DATA

	EXISTING RUNWAY 4R-22L		ULTIMATE RUNWAY 4R-22L		EXISTING RUNWAY 4L-22R		ULTIMATE RUNWAY 4L-22R	
	4R	22L	4R	22L	4L	22R	4L	22R
TORA - TAKEOFF RUN AVAILABLE	5,101'	5,101'	5,101'	5,101'	3,799'	3,799'	3,799'	3,799'
TODA - TAKEOFF DISTANCE AVAILABLE	5,101'	5,101'	5,101'	5,101'	3,799'	3,799'	3,799'	3,799'
ASDA - ACCELERATE-STOP DISTANCE AVAILABLE	5,101'	5,101'	5,101'	5,101'	3,799'	3,799'	3,799'	3,799'
LDA - LANDING DISTANCE AVAILABLE	5,101'	5,101'	5,101'	5,101'	3,799'	3,799'	3,799'	3,799'

LOCATION MAP



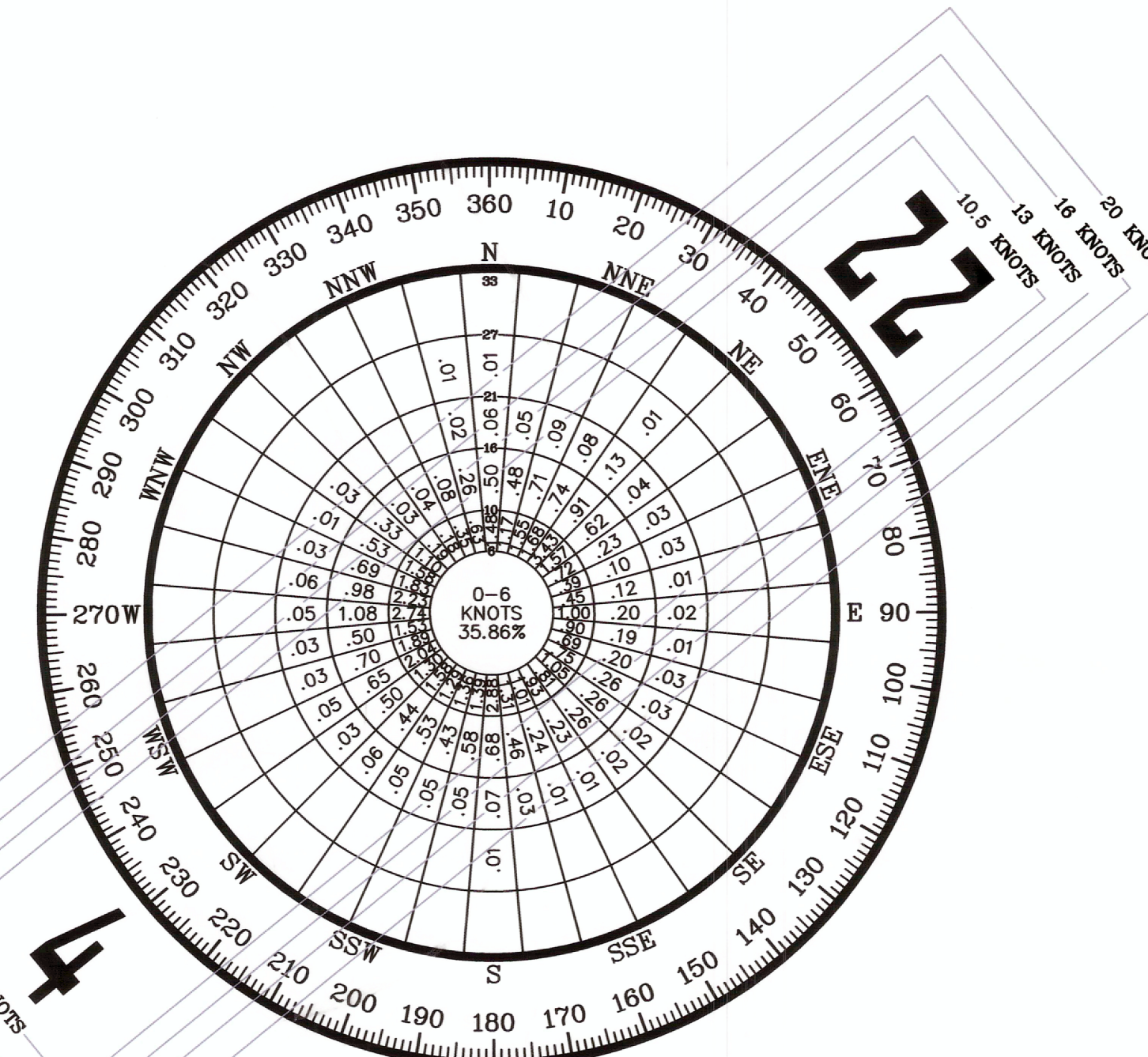
SPONSOR APPROVAL

BY: *Natalie Lewis*
 NATALIE LEWIS
 DEPUTY CITY MANAGER
 DATE: 12-13-16

FAA APPROVAL

Approved conditionally Dec 22, 2016
 Subject to comments contained in our letter dated: Dec 22, 2016
 FEDERAL AVIATION ADMINISTRATION
 Western-Pacific Region
 By: *J.M. G...*
 Manager / Assistant Manager - Phoenix/ACD

VICINITY MAP



WIND DATA TABLE

Runway	10.5 Knots	13 Knots	16 Knots	20 Knots
4-22	94.51%	97.73%	99.65%	99.94%

SOURCE: NOAA NATIONAL CLIMATIC DATA CENTER - ASHEVILLE, NC
 RECORDS FOR MESA-FALCON FIELD, MESA, ARIZONA
 OBSERVATIONS: 23,996 ALL-WEATHER (1997-2006)

MESA-FALCON FIELD AIRPORT (FFZ)
 City of Mesa, Arizona

nicholas j. pela & associates
 airport consultants
 2930 East Northern Ave. Bldg A-100
 Phoenix, Arizona 85028
 (602) 349-9957
 nicholas.pela@nicholasjapela.com

REVISION DESCRIPTION	DATE
UPDATE ALP - EXISTING AND ULTIMATE IMPROVEMENTS	01/20/2016
ADD EXISTING ASOS and ULTIMATE RWY 4L-22R BLAST PADS	07/15/2016
HANGAR DEVELOPMENT AREA REVISIONS	10/26/2016
REVISED TO SHOW EXISTING RWY 4L NP APPROACH	12/02/2016

TITLE SHEET
 MESA - FALCON FIELD AIRPORT (FFZ)
 MESA, ARIZONA

Planning: NJP
 Drawn: NJP
 Checked: RT
 Date: 07/15/2016

Sheet No.
1
 of
 10

LEGEND

EXISTING	ULTIMATE
	N/A
	N/A
	N/A
	N/A
	N/A
	N/A
	N/A
	N/A
	N/A
	N/A
	N/A
	N/A
	N/A
	N/A
	N/A
	N/A
	N/A
	N/A

INDICATES DEVIATION FROM CURRENT FAA DESIGN STANDARDS - SEE SHEET 4 FOR INFORMATION

ROOSEVELT WATER CONSERVATION DISTRICT (RWCDC) CANAL

UNDEVELOPED AIRPORT LAND

FUTURE DEVELOPMENT WILL CONSIST OF REMOVING EXISTING CITRUS TREES FOR NON-AERONAUTICAL DEVELOPMENT

SOURCES OF INFORMATION:
 BACKGROUND MAPPING IS MARICOPA COUNTY GIS IMAGING, DATED DECEMBER, 2014. GROUND CONTOURS ARE FROM THE PREVIOUS ALP, ORIGINALLY GENERATED IN 2007 BY COFFMAN ASSOCIATES, AND UPDATED IN 2014 BY DIBBLE ENGINEERING.

REVISION DESCRIPTION	DATE
UPDATE ALP - EXISTING AND ULTIMATE IMPROVEMENTS	01/20/2016
ADD EXISTING ASOS AND ULTIMATE RWY 4L-22R BLAST PADS	07/15/2016
HANGAR DEVELOPMENT AREA REVISIONS	10/26/2016
REVISED TO SHOW EXISTING RWY 4L NP APPROACH	12/02/2016

AIRPORT LAYOUT DRAWING MESA - FALCON FIELD AIRPORT (FFZ) MESA, ARIZONA

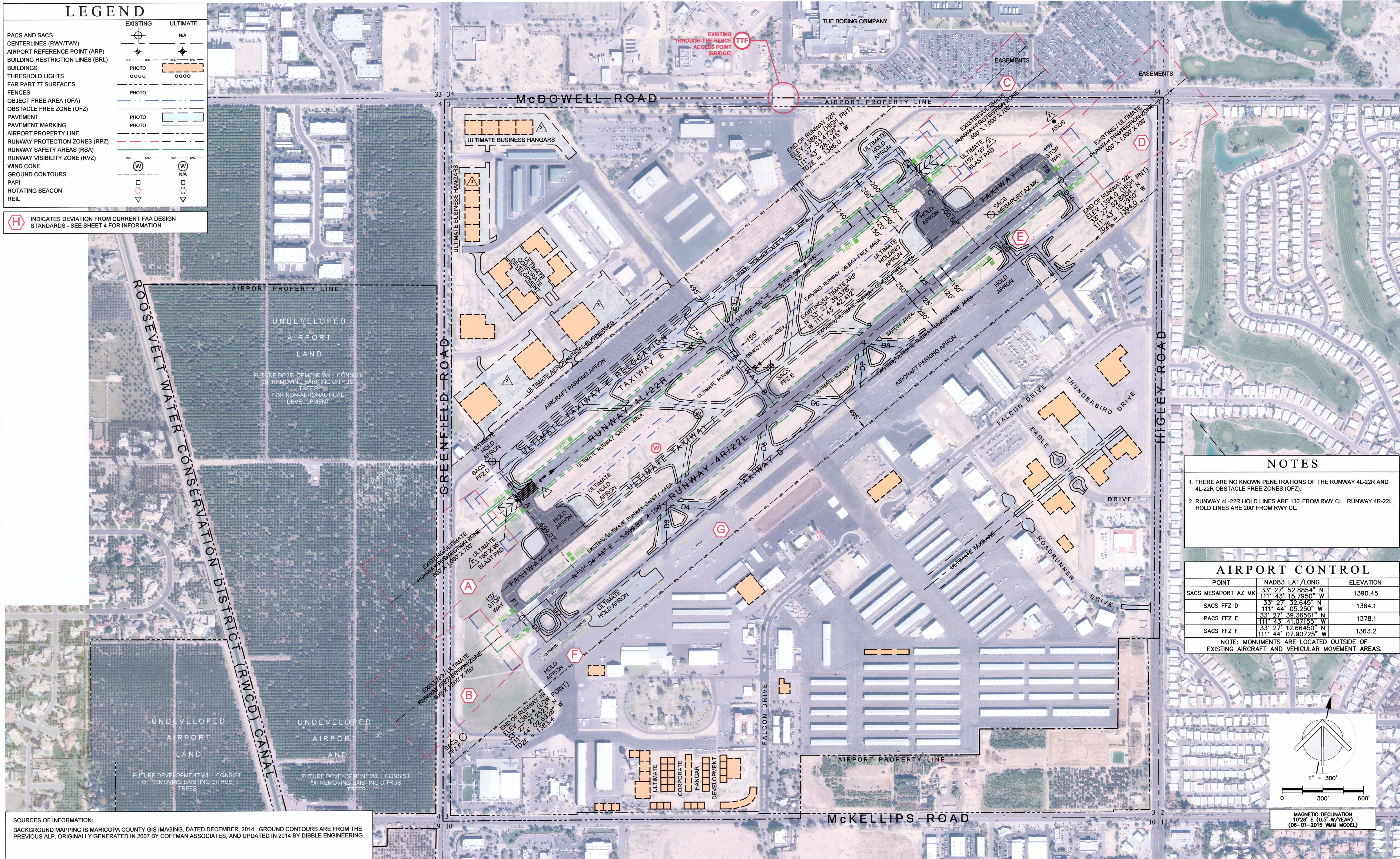
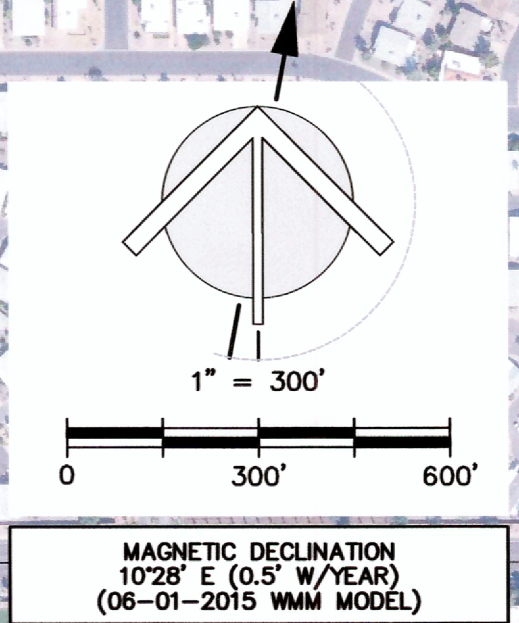
Planning:	NJP	Sheet No.	2
Drawn:	NJP		
Checked:	RT		
Date:	07/15/2016		of 10

- ### NOTES
- THERE ARE NO KNOWN PENETRATIONS OF THE RUNWAY 4L-22R AND 4L-22R OBSTACLE FREE ZONES (OFZ).
 - RUNWAY 4L-22R HOLD LINES ARE 130' FROM RWY CL. RUNWAY 4R-22L HOLD LINES ARE 200' FROM RWY CL.

AIRPORT CONTROL

POINT	NAD83 LAT/LONG	ELEVATION
SACS MESAPORT AZ MK	33° 27' 52.8854" N 111° 43' 15.7950" W	1390.45
SACS FFZ D	33° 27' 52.645" N 111° 44' 05.260" W	1364.1
PACS FFZ E	33° 27' 39.36561" N 111° 43' 41.07155" W	1378.1
SACS FFZ F	33° 27' 12.66450" N 111° 44' 07.90725" W	1363.2

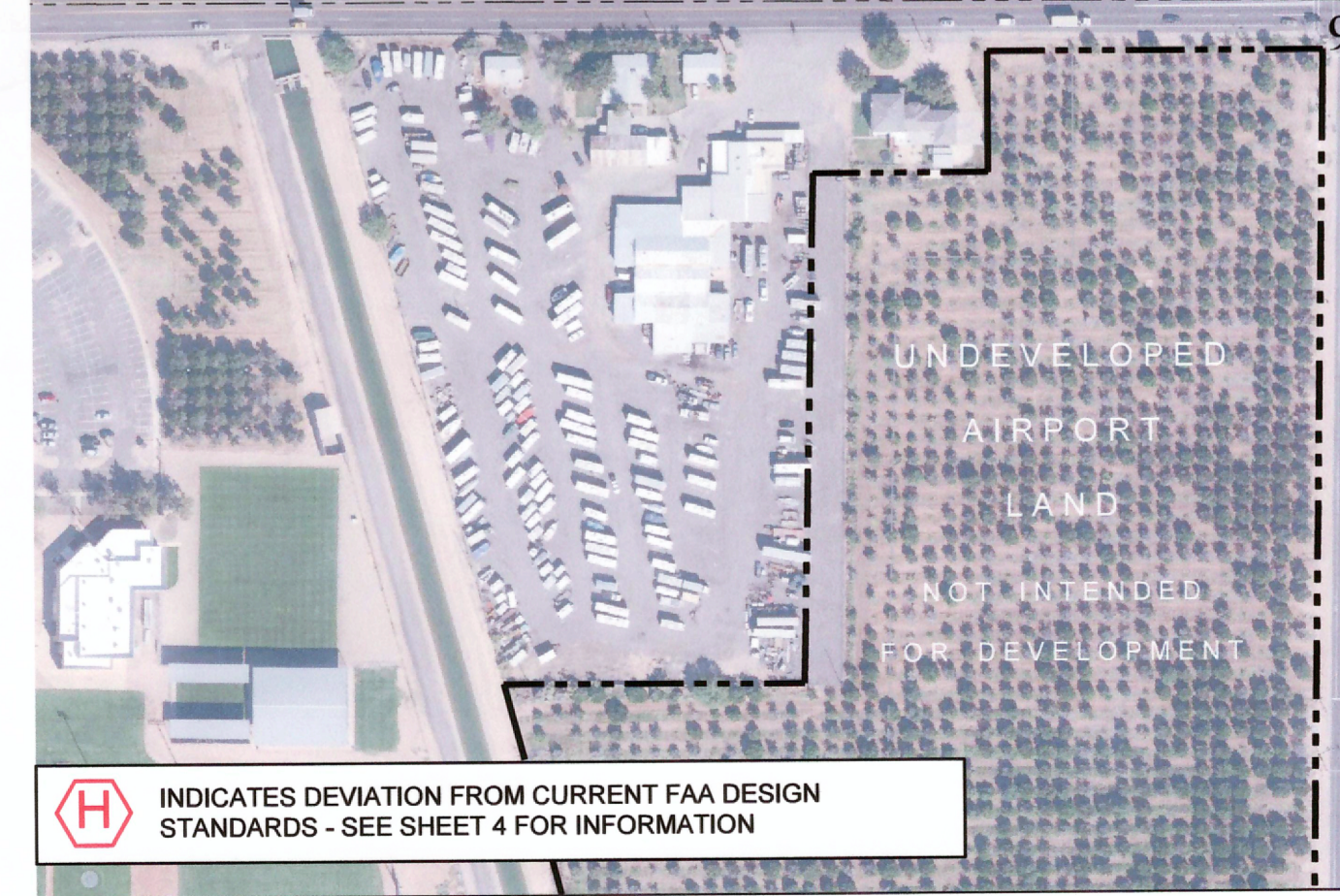
NOTE: MONUMENTS ARE LOCATED OUTSIDE OF EXISTING AIRCRAFT AND VEHICULAR MOVEMENT AREAS.



ULTIMATE BUILDINGS/FACILITIES	
NO	DESCRIPTION
A	OFFICE/HANGAR
B	CONVENTIONAL HANGAR
C	CONVENTIONAL HANGAR
D	T-HANGARS
E	CONVENTIONAL HANGAR
F	EXECUTIVE HANGARS
G	EXECUTIVE HANGARS
H	EXECUTIVE HANGARS
I	T-HANGARS
J	EXECUTIVE HANGARS
K	OFFICE BUILDING
L	EXECUTIVE HANGARS
M	EXECUTIVE HANGARS
N	EXECUTIVE HANGARS
O	CORPORATE HANGAR
BB	OFFICE / HANGAR
CC	OFFICE / HANGAR
DD	OFFICE / HANGAR
EE	OFFICE - CORPORATE DEVELOPMENT

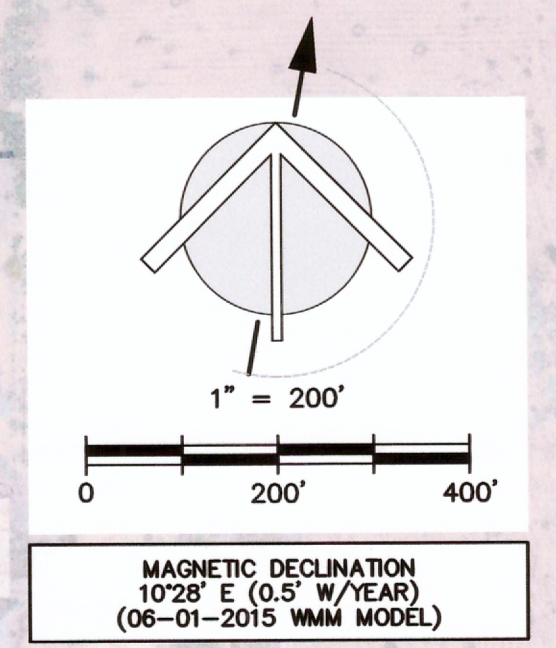
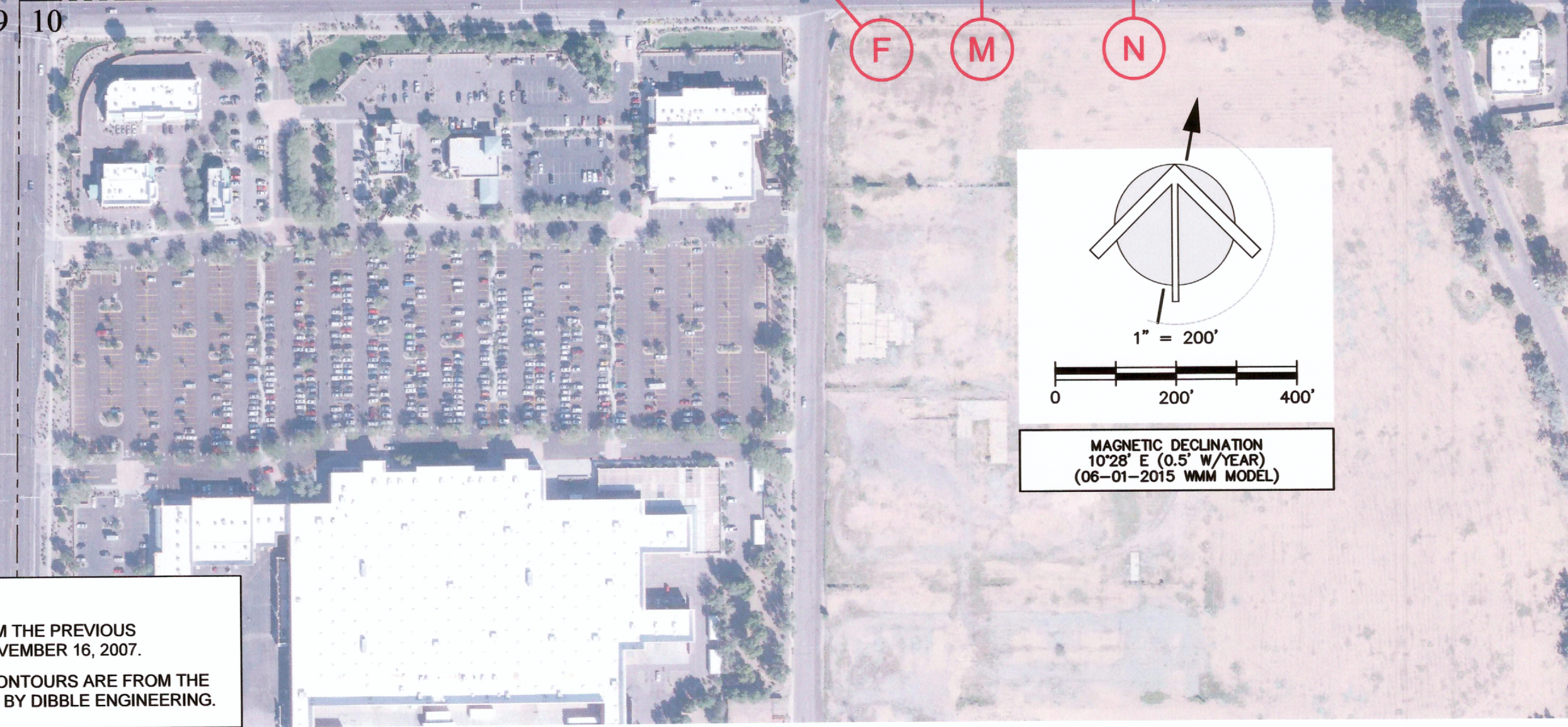
NOTE
LAYOUT OF ULTIMATE BUILDINGS AND HANGARS ARE CONCEPTUAL ONLY AND DO NOT SHOW AUTO PARKING AND OTHER FACILITIES.

MATCH LINE - SEE SHEET 4



INDICATES DEVIATION FROM CURRENT FAA DESIGN STANDARDS - SEE SHEET 4 FOR INFORMATION

SOURCES OF INFORMATION:
ALL EXISTING AND ULTIMATE BUILDING INFORMATION ON THIS DRAWING HAS BEEN UPDATED FROM THE PREVIOUS AIRPORT LAYOUT PLAN, PREPARED BY COFFMAN ASSOCIATES AND APPROVED BY THE FAA ON NOVEMBER 16, 2007.
BACKGROUND MAPPING IS MARICOPA COUNTY GIS IMAGING, DATED DECEMBER, 2014. GROUND CONTOURS ARE FROM THE PREVIOUS ALP, ORIGINALLY GENERATED IN 2007 BY COFFMAN ASSOCIATES, AND UPDATED IN 2014 BY DIBBLE ENGINEERING.



EXISTING BUILDINGS/FACILITIES		
NO	DESCRIPTION	ELEV
1	TERMINAL/ADMINISTRATION	1394.0
2	AIR TRAFFIC CONTROL TOWER	1452.7
3	FALCON 7 - DESERT JET CTR	1400.3
4	T-HANGARS (TO BE REMOVED)	1393.6
5	T-HANGARS (TO BE REMOVED)	1391.3
6	T-HANGARS	1389.6
7	SHADE HANGAR	1388.6
8	SHADE HANGAR	1389.2
9	SHADE HANGAR	1386.4
10	CONVENTIONAL HANGAR	1400.0
11	EXECUTIVE HANGAR	1403.3
12	FIXED BASE OPERATION	1392.3
13	CONVENTIONAL HANGAR	1402.6
14	OFFICE BUILDING	1398.1
15	CONVENTIONAL HANGAR	1404.8
16	CIVIL AIR PATROL	1387.1
17	AIRPORT ADMINISTRATION	1395.7
18	CONVENTIONAL HANGAR	1404.8
19	EXECUTIVE HANGAR	1404.9
20	T-HANGARS	1416.1
21	T-HANGARS	1404.0
22	T-HANGARS	1399.7
23	EXECUTIVE HANGAR	1410.1
24	EXECUTIVE HANGAR	1411.8

EXISTING BUILDINGS/FACILITIES		
NO	DESCRIPTION	ELEV
25	T-HANGARS	1403.6
26	T-HANGARS	1398.9
27	T-HANGARS	1399.0
28	T-HANGARS	1399.1
29	T-HANGARS	1399.0
30	T-HANGARS	1399.0
31	T-HANGARS	1403.2
32	T-HANGARS	1403.4
33	T-HANGARS	1403.4
34	T-HANGARS	1403.3
35	T-HANGARS	1403.5
36	T-HANGARS	1403.4
37	SHADE HANGAR	1406.4
38	T-HANGARS	1403.1
39	T-HANGARS	1403.1
40	T-HANGARS	1402.3
41	T-HANGARS	1402.3
42	T-HANGARS	1402.1
43	T-HANGARS	1401.7
44	OFFICE BUILDING	1409.9
45	OFFICE BUILDING	1415.1
46	SHADE HANGAR	1405.6
47	SHADE HANGAR	1410.4
48	VEHICLE SHADE	1407.1

EXISTING BUILDINGS/FACILITIES		
NO	DESCRIPTION	ELEV
49	T-HANGARS	1412.4
50	T-HANGARS	1409.9
51	T-HANGARS	1407.1
52	T-HANGARS	1407.4
53	T-HANGARS	1410.4
54	T-HANGARS	1412.9
55	T-HANGARS	1412.6
56	T-HANGARS	1410.4
57	T-HANGARS	1407.4
58	T-HANGARS	1412.8
59	T-HANGARS	1417.1
60	POST OFFICE	1431.4
61	OPERATIONS BUILDING	1426.4
62	CONVENTIONAL HANGAR	1426.9
63	CONVENTIONAL HANGAR	1423.5
64	EXECUTIVE HANGAR	1413.5
65	EXECUTIVE HANGAR	1419.6
66	EXECUTIVE HANGAR	1409.8
67	CONVENTIONAL HANGAR	1425.3
68	EXECUTIVE HANGAR	1412.0
69	EXECUTIVE HANGAR	1416.0
70	CONVENTIONAL HANGAR	1415.0
71	CONVENTIONAL HANGAR	1413.3
72	CONVENTIONAL HANGAR	1410.3

EXISTING BUILDINGS/FACILITIES		
NO	DESCRIPTION	ELEV
73	T-HANGARS	1402.8
74	T-HANGARS	1403.0
75	T-HANGARS	1403.8
76	T-HANGARS (TO BE REMOVED)	1401.1
77	T-HANGARS	1404.7
78	T-HANGARS	1405.1
79	T-HANGARS	1404.6
80	T-HANGARS	1405.2
81	T-HANGARS	1405.2
82	AIRCRAFT PAINT FACILITY	---
83	MUSEUM/CONV. HANGAR	1396.5
84	CITY FIRE STATION NO. 208	1388.8
85	WATER TOWER	1513.8
86	RESTAURANT	1399.6
87	OFFICE BUILDING	1384.6
88	SELF-SERVICE FUEL	---
89	SHADE HANGAR	1391.2
90	FUEL FARM	---
91	FUEL FARM	---
92	WASH RACK	---
93	VEHICLE SHADE	1393.4
116	T-HANGARS	---
117	T-HANGARS	---
118	T-HANGARS	---

TERMINAL AREA DRAWING - SOUTH

MESA - FALCON FIELD AIRPORT (FFZ)

MESA, ARIZONA

Planning: NJP
 Drawn: NJP
 Checked: RT
 Date: 07/15/2016

Sheet No.
3
 of
 10

MESA-FALCON FIELD AIRPORT (FFZ)
City of Mesa, Arizona

nicholas j. pela & associates
airport consultants

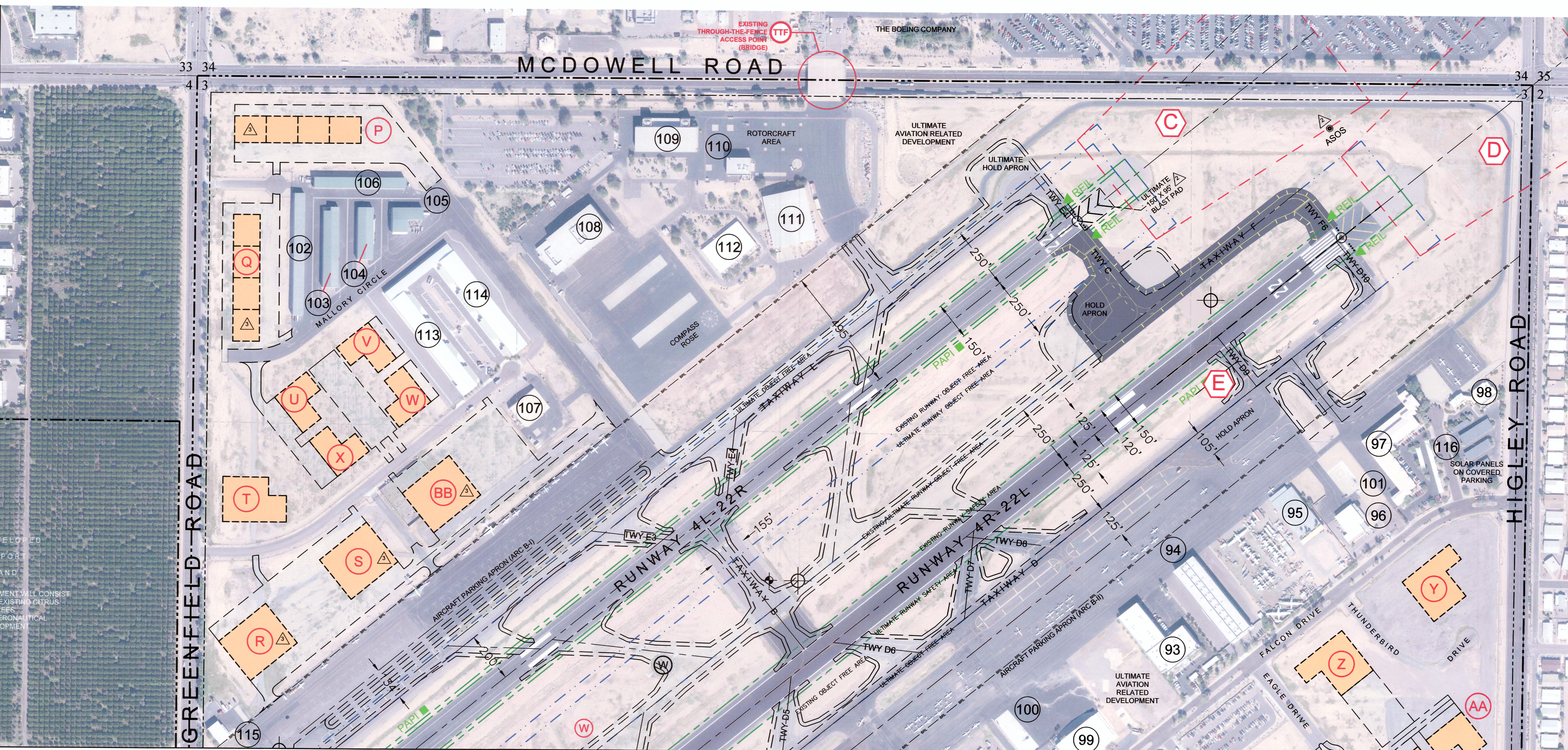
2930 East Northern Ave., Bldg A-100
Phoenix, Arizona 85028
(602) 349-9947
nicholas.pela@nicholaspela.com

REVISION DESCRIPTION	DATE
UPDATE ALP - EXISTING AND ULTIMATE IMPROVEMENTS	01/20/2016
ADD EXISTING ASOS and ULTIMATE RWY 4L-22R BLAST PADS	07/15/2016
HANGAR DEVELOPMENT AREA REVISIONS	10/26/2016
REVISED TO SHOW EXISTING RWY 4L NP APPROACH	12/02/2016

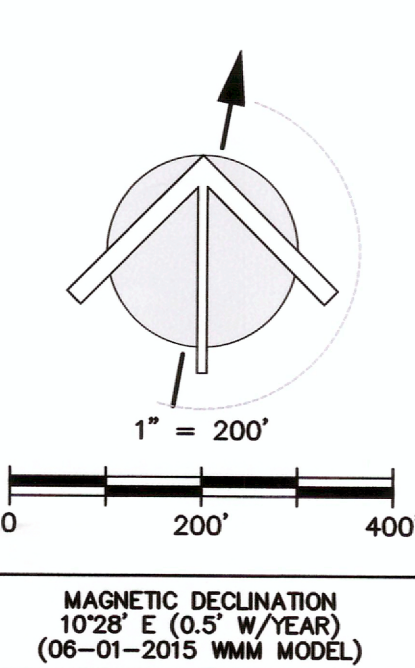
ULTIMATE BUILDINGS/FACILITIES	
NO	DESCRIPTION
P	BUSINESS HANGARS
Q	BUSINESS HANGARS
R	AERONAUTICAL BUSINESS
S	AERONAUTICAL BUSINESS
T	OFFICE - CORPORATE DEVELOPMENT
U	OFFICE / HANGAR
V	OFFICE / HANGAR
W	OFFICE / HANGAR
X	OFFICE / HANGAR
Y	OFFICE - CORPORATE DEVELOPMENT
Z	OFFICE / HANGAR
AA	OFFICE / HANGAR
BB	AERONAUTICAL BUSINESS

NOTE
LAYOUT OF ULTIMATE BUILDINGS AND HANGARS ARE CONCEPTUAL ONLY AND DO NOT SHOW AUTO PARKING AND OTHER FACILITIES.

UNDEVELOPED AIRPORT LAND
FUTURE DEVELOPMENT WILL CONSIST OF REMOVING EXISTING OUTRUS TREES FOR NON-AERONAUTICAL DEVELOPMENT



MATCH LINE - SEE SHEET 3



(H) INDICATES DEVIATION FROM CURRENT FAA DESIGN STANDARDS - SEE THE TABLE AT RIGHT FOR INFORMATION.

SOURCES OF INFORMATION:
ALL EXISTING AND ULTIMATE BUILDING INFORMATION ON THIS DRAWING HAS BEEN UPDATED FROM THE PREVIOUS AIRPORT LAYOUT PLAN, PREPARED BY COFFMAN ASSOCIATES AND APPROVED BY THE FAA ON NOVEMBER 16, 2007.
BACKGROUND MAPPING IS MARICOPA COUNTY GIS IMAGING, DATED DECEMBER, 2014. GROUND CONTOURS ARE FROM THE PREVIOUS ALP, ORIGINALLY GENERATED IN 2007 AND UPDATED IN 2014 BY DIBBLE ENGINEERING.

DEVIATIONS FROM FAA AIRPORT DESIGN STANDARDS			
DEVIATION DESCRIPTION	AFFECTED STANDARD	STANDARD	PROPOSED DISPOSITION *
(A) PUBLIC ROAD WITHIN RUNWAY PROTECTION ZONE (RPZ) FOR RUNWAY 4L (GREENFIELD ROAD)	AC 150/5300-13A PAR 310	NO PUBLIC ROADS ALLOWED WITHIN THE RPZ	THE AIRPORT WILL STUDY THIS AS A PART OF THE NEXT MASTER PLAN UPDATE, AND PENDING FURTHER POLICY GUIDANCE FROM THE FAA.
(B) PUBLIC ROAD WITHIN RUNWAY PROTECTION ZONE (RPZ) FOR RUNWAY 4R (GREENFIELD ROAD)	AC 150/5300-13A PAR 310	NO PUBLIC ROADS ALLOWED WITHIN THE RPZ	THE AIRPORT WILL STUDY THIS AS A PART OF THE NEXT MASTER PLAN UPDATE, AND PENDING FURTHER POLICY GUIDANCE FROM THE FAA.
(C) PUBLIC ROAD WITHIN RUNWAY PROTECTION ZONE (RPZ) FOR RUNWAY 22R (MCDOWELL ROAD)	AC 150/5300-13A PAR 310	NO PUBLIC ROADS ALLOWED WITHIN THE RPZ	THE AIRPORT WILL STUDY THIS AS A PART OF THE NEXT MASTER PLAN UPDATE, AND PENDING FURTHER POLICY GUIDANCE FROM THE FAA.
(D) PUBLIC ROAD WITHIN RUNWAY PROTECTION ZONE (RPZ) FOR RUNWAY 22L (MCDOWELL & HIGLEY ROADS)	AC 150/5300-13A PAR 310	NO PUBLIC ROADS ALLOWED WITHIN THE RPZ	THE AIRPORT WILL STUDY THIS AS A PART OF THE NEXT MASTER PLAN UPDATE, AND PENDING FURTHER POLICY GUIDANCE FROM THE FAA.
(E) TAXIWAY C AT RUNWAY 22L ALLOWS DIRECT ACCESS FROM APRON TO THE RUNWAY	AC 150/5300-13A PAR 503	UNINTERRUPTED ACCESS FROM APRON TO RUNWAY IS NOT ALLOWED	THE AIRPORT WILL STUDY THIS AS A PART OF THE NEXT AIRPORT MASTER PLAN UPDATE (2016)
(F) TAXIWAYS D1 AND A ALLOW DIRECT ACCESS FROM APRON TO THE RUNWAY	AC 150/5300-13A PAR 503	UNINTERRUPTED ACCESS FROM APRON TO RUNWAY IS NOT ALLOWED	CONSTRUCT MARKED AND LIGHTED TAXIWAY MEDIAN AS SHOWN (IDENTIFIED AS HOT SPOT HS 1 BY THE FAA)
(G) PARALLEL TAXILANE SEPARATION FROM PARALLEL TWY D IS DEFICIENT (87' CL TO CL) - SEE SHEET 3	AC 150/5300-13A, TABLE 4-1	ARC B-II CL TO CL SEPARATION MUST BE A MINIMUM OF 105'	RESTRIPPE THE TAXILANE CENTERLINE TO PROVIDE THE REQUIRED SEPARATION
(H) (AIRPORT WIDE) TAXIWAY FILLETS DO NOT MEET CURRENT DESIGN STANDARDS	AC 150/5300-13A, PAR 406		THE ULTIMATE TAXIWAY FILLETS DEPICTED WILL BE CONSTRUCTED AS FAA FUNDING IS MADE AVAILABLE IN CONJUNCTION WITH ASSOCIATED TAXIWAY IMPROVEMENT PROJECTS

* THE AIRPORT WILL DEVELOP AND IMPLEMENT A PLAN TO IMPROVE OR FULLY MITIGATE THE DEVIATIONS TO STANDARDS.
THE ACTIONS DESCRIBED IN THIS TABLE REPRESENT THE RESULTS OF PRELIMINARY ASSESSMENTS OF POTENTIAL MITIGATION ACTIONS THAT MAY BE TAKEN.

EXISTING BUILDINGS/FACILITIES		
NO	DESCRIPTION	ELEV
93	CONVENTIONAL HANGAR	1421.6
94	CONVENTIONAL HANGAR	-
95	CONVENTIONAL HANGAR	1418.7
96	MESA POLICE - AVIATION UNIT	1417.9
97	OFFICE/EXECUTIVE HANGARS	1440.0
98	RESTAURANT (VACANT)	1417.5
99	CONVENTIONAL HANGAR	1416.9
100	SELF-SERVICE FUEL	-
101	FUEL FARM	-
102	EXECUTIVE HANGARS	-
103	EXECUTIVE HANGARS	-
104	EXECUTIVE HANGARS	-
105	EXECUTIVE HANGAR	-
106	EXECUTIVE HANGARS	-
107	MD HELICOPTERS	1393.2
108	???	1422.4
109	MD HELICOPTERS	1408.8
110	MD HELICOPTERS	1410.0
111	MD HELICOPTERS	1413.9
112	MD HELICOPTERS	1391.5
113	EXECUTIVE HANGARS	-
114	EXECUTIVE HANGARS	-
115	CONVENTIONAL HANGAR	-
116	SOLAR PANEL/CVRD PARKING	-

MESA-FALCON FIELD AIRPORT (FFZ)
City of Mesa, Arizona

nicholas j. pela & associates
airport consultants
2930 East Northern Ave., Bldg A-100
Phoenix, Arizona 85028
(602) 349-9987
nicholas.pela@nicholaspela.com

REVISION DESCRIPTION	DATE
UPDATE ALP - EXISTING AND ULTIMATE IMPROVEMENTS	01/20/2016
ADD EXISTING ASOS AND ULTIMATE RWY 4L-22R BLAST PADS	07/15/2016
HANGAR DEVELOPMENT AREA REVISIONS	10/26/2016
REVISED TO SHOW EXISTING RWY 4L NP APPROACH	12/02/2016

TERMINAL AREA DRAWING - NORTH

MESA - FALCON FIELD AIRPORT (FFZ)

MESA, ARIZONA

Planning: NJP
Drawn: NJP
Checked: RT
Date: 07/15/2016

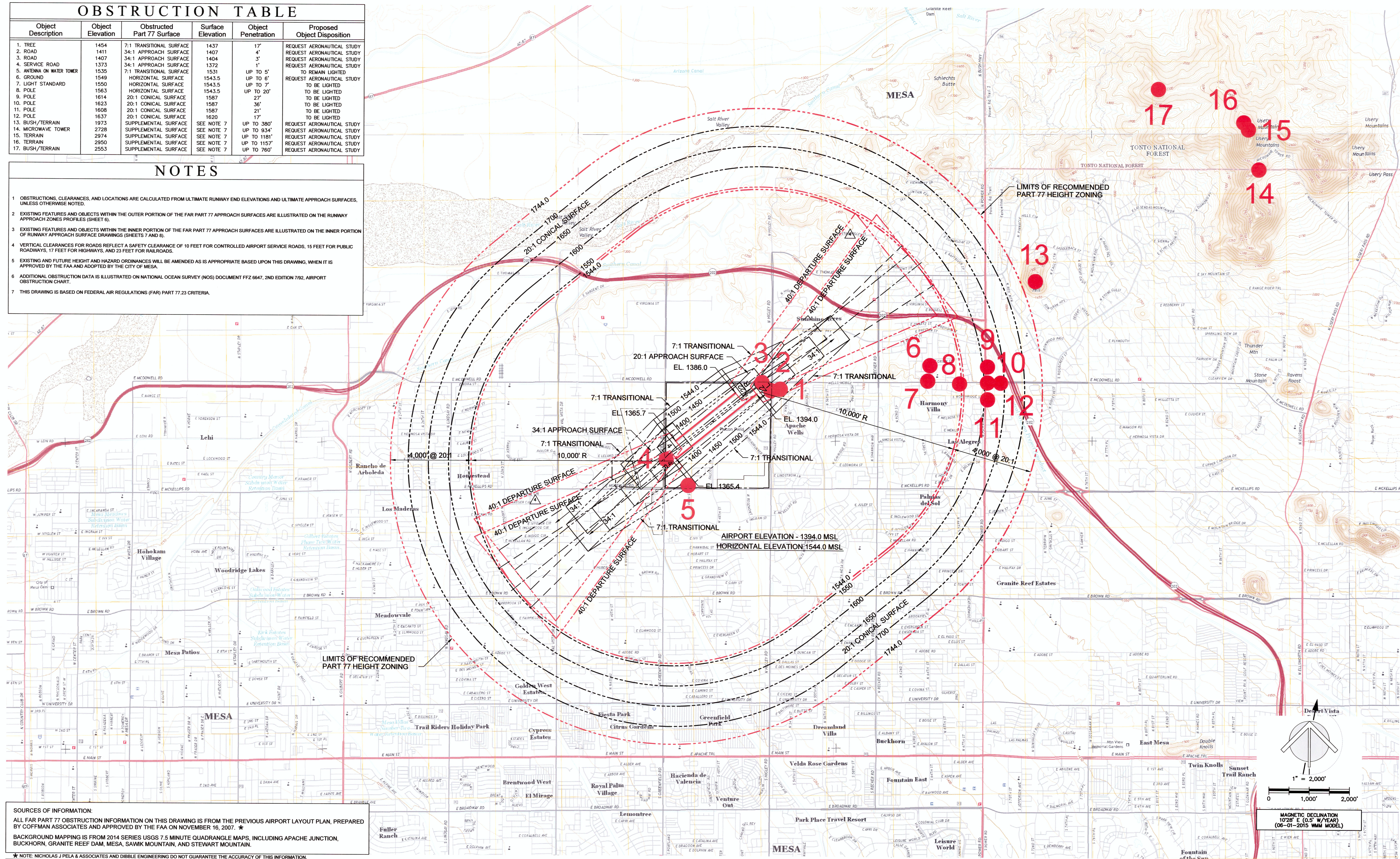
Sheet No.
4
of
10

OBSTRUCTION TABLE

Object Description	Object Elevation	Obstructed Part 77 Surface	Surface Elevation	Object Penetration	Proposed Object Disposition
1. TREE	1454	7:1 TRANSITIONAL SURFACE	1437	17'	REQUEST AERONAUTICAL STUDY
2. ROAD	1411	34:1 APPROACH SURFACE	1407	4'	REQUEST AERONAUTICAL STUDY
3. ROAD	1407	34:1 APPROACH SURFACE	1404	3'	REQUEST AERONAUTICAL STUDY
4. SERVICE ROAD	1373	34:1 APPROACH SURFACE	1372	1'	REQUEST AERONAUTICAL STUDY
5. ANTENNA ON WATER TOWER	1535	7:1 TRANSITIONAL SURFACE	1531	UP TO 5'	TO REMAIN LIGHTED
6. GROUND	1549	HORIZONTAL SURFACE	1543.5	UP TO 6"	REQUEST AERONAUTICAL STUDY
7. LIGHT STANDARD	1550	HORIZONTAL SURFACE	1543.5	UP TO 7"	TO BE LIGHTED
8. POLE	1563	HORIZONTAL SURFACE	1543.5	UP TO 20'	TO BE LIGHTED
9. POLE	1614	20:1 CONICAL SURFACE	1587	27'	TO BE LIGHTED
10. POLE	1623	20:1 CONICAL SURFACE	1587	36'	TO BE LIGHTED
11. POLE	1608	20:1 CONICAL SURFACE	1587	21'	TO BE LIGHTED
12. POLE	1637	20:1 CONICAL SURFACE	1620	17'	TO BE LIGHTED
13. BUSH/TERRAIN	1973	SUPPLEMENTAL SURFACE	SEE NOTE 7	UP TO 380'	REQUEST AERONAUTICAL STUDY
14. MICROWAVE TOWER	2728	SUPPLEMENTAL SURFACE	SEE NOTE 7	UP TO 934'	REQUEST AERONAUTICAL STUDY
15. TERRAIN	2974	SUPPLEMENTAL SURFACE	SEE NOTE 7	UP TO 1181'	REQUEST AERONAUTICAL STUDY
16. TERRAIN	2950	SUPPLEMENTAL SURFACE	SEE NOTE 7	UP TO 1157'	REQUEST AERONAUTICAL STUDY
17. BUSH/TERRAIN	2553	SUPPLEMENTAL SURFACE	SEE NOTE 7	UP TO 760'	REQUEST AERONAUTICAL STUDY

NOTES

- OBSTRUCTIONS, CLEARANCES, AND LOCATIONS ARE CALCULATED FROM ULTIMATE RUNWAY END ELEVATIONS AND ULTIMATE APPROACH SURFACES, UNLESS OTHERWISE NOTED.
- EXISTING FEATURES AND OBJECTS WITHIN THE OUTER PORTION OF THE FAR PART 77 APPROACH SURFACES ARE ILLUSTRATED ON THE RUNWAY APPROACH ZONES PROFILES (SHEET 6).
- EXISTING FEATURES AND OBJECTS WITHIN THE INNER PORTION OF THE FAR PART 77 APPROACH SURFACES ARE ILLUSTRATED ON THE INNER PORTION OF RUNWAY APPROACH SURFACE DRAWINGS (SHEETS 7 AND 8).
- VERTICAL CLEARANCES FOR ROADS REFLECT A SAFETY CLEARANCE OF 10 FEET FOR CONTROLLED AIRPORT SERVICE ROADS, 15 FEET FOR PUBLIC ROADWAYS, 17 FEET FOR HIGHWAYS, AND 23 FEET FOR RAILROADS.
- EXISTING AND FUTURE HEIGHT AND HAZARD ORDINANCES WILL BE AMENDED AS IS APPROPRIATE BASED UPON THIS DRAWING, WHEN IT IS APPROVED BY THE FAA AND ADOPTED BY THE CITY OF MESA.
- ADDITIONAL OBSTRUCTION DATA IS ILLUSTRATED ON NATIONAL OCEAN SURVEY (NOS) DOCUMENT FFZ 6647, 2ND EDITION 792, AIRPORT OBSTRUCTION CHART.
- THIS DRAWING IS BASED ON FEDERAL AIR REGULATIONS (FAR) PART 77.23 CRITERIA.



SOURCES OF INFORMATION:
 ALL FAR PART 77 OBSTRUCTION INFORMATION ON THIS DRAWING IS FROM THE PREVIOUS AIRPORT LAYOUT PLAN, PREPARED BY COFFMAN ASSOCIATES AND APPROVED BY THE FAA ON NOVEMBER 16, 2007. ★
 BACKGROUND MAPPING IS FROM 2014 SERIES USGS 7.5 MINUTE QUADRANGLE MAPS, INCLUDING APACHE JUNCTION, BUCKHORN, GRANITE REEF DAM, MESA, SAWIK MOUNTAIN, AND STEWART MOUNTAIN.
 ★ NOTE: NICHOLAS J PELA & ASSOCIATES AND DIBBLE ENGINEERING DO NOT GUARANTEE THE ACCURACY OF THIS INFORMATION.

REVISION DESCRIPTION	DATE
UPDATE ALP - EXISTING AND ULTIMATE IMPROVEMENTS	01/20/2016
ADD EXISTING ASOS AND ULTIMATE RWY 4L-22R BLAST PADS	07/15/2016
HANGAR DEVELOPMENT AREA REVISIONS	10/26/2016
REVISED TO SHOW EXISTING RWY 4L NP APPROACH	12/02/2016

AIRPORT AIRSPACE DRAWING

MESA - FALCON FIELD AIRPORT (FFZ)

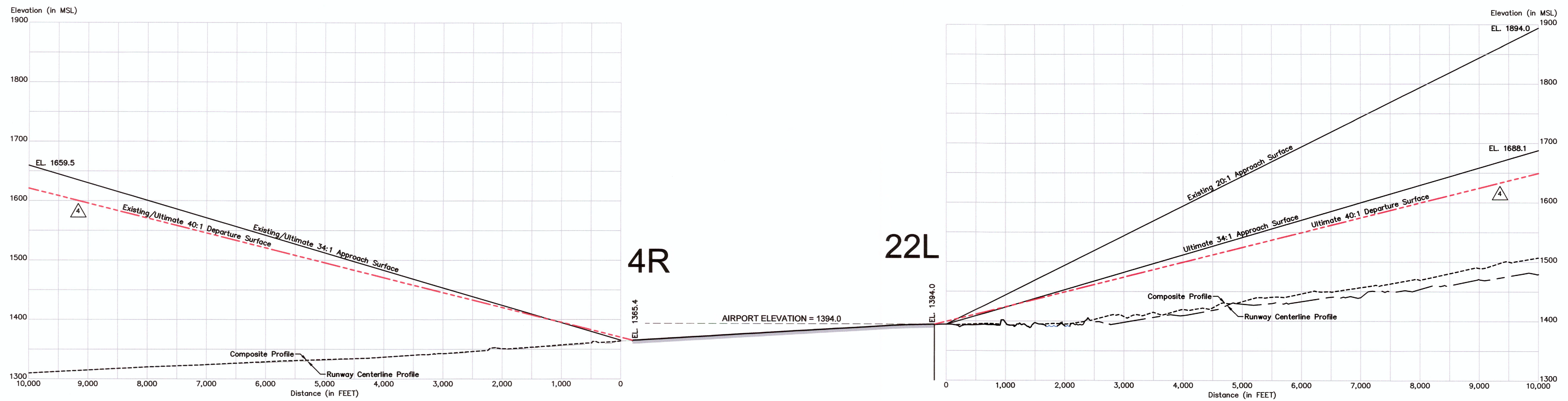
MESA, ARIZONA

Planning: NJP
 Drawn: NJP
 Checked: RT
 Date: 07/15/2016

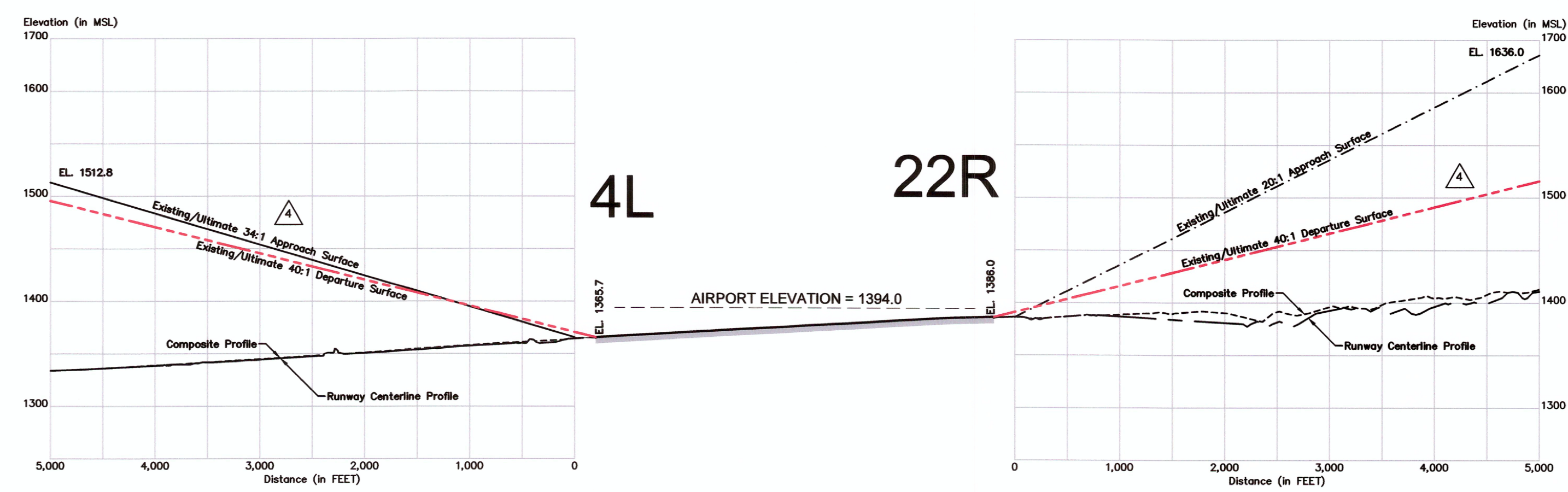
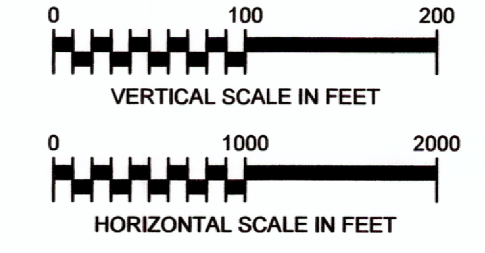
Sheet No.
5
 of
 10

MESA-FALCON FIELD AIRPORT (FFZ)
 City of Mesa, Arizona

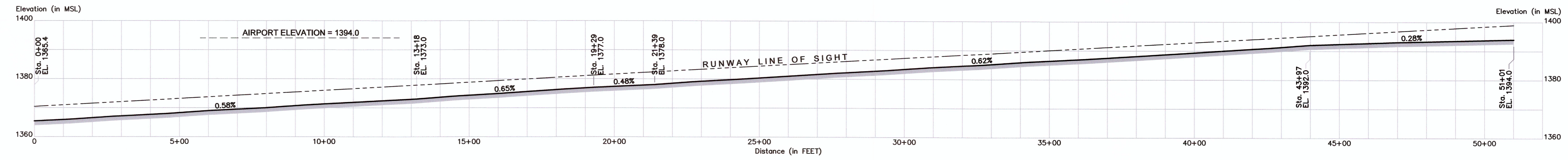
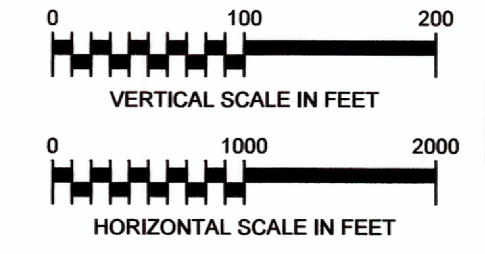
nicholas j pela & associates
 airport consultants
 2930 East Northern Ave, Bldg A-100
 Phoenix, Arizona 85028
 (602) 349-9957
 nicholas.pela@nicholaspela.com



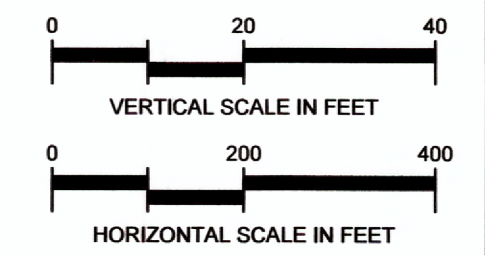
RUNWAY 4R-22L APPROACH SURFACE PROFILES



RUNWAY 4L-22R APPROACH SURFACE PROFILES



RUNWAY 4R-22L PROFILE

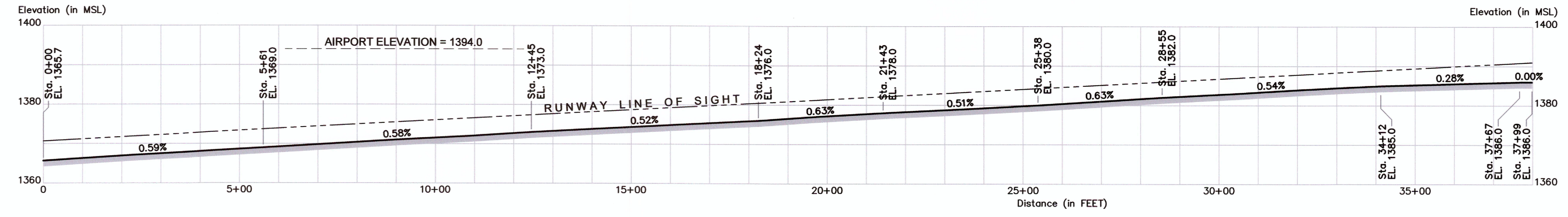


OBSTRUCTION TABLE

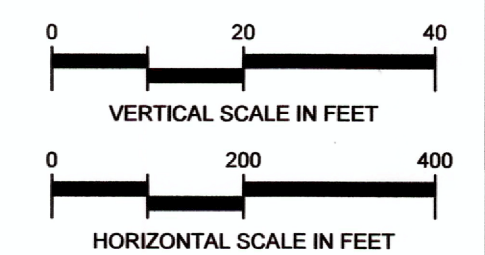
Object Description	Object Elevation	Obstructed Part 77 Surface	Surface Elevation	Object Penetration	Proposed Object Disposition
NONE					

SOURCES OF INFORMATION:
 ALL FAR PART 77 OBSTRUCTION INFORMATION ON THIS DRAWING IS FROM THE PREVIOUS AIRPORT LAYOUT PLAN, PREPARED BY COFFMAN ASSOCIATES AND APPROVED BY THE FAA ON NOVEMBER 16, 2007. *

* NOTE: NICHOLAS J PELA & ASSOCIATES AND DIBBLE ENGINEERING DO NOT GUARANTEE THE ACCURACY OF THIS INFORMATION.



RUNWAY 4L-22R PROFILE



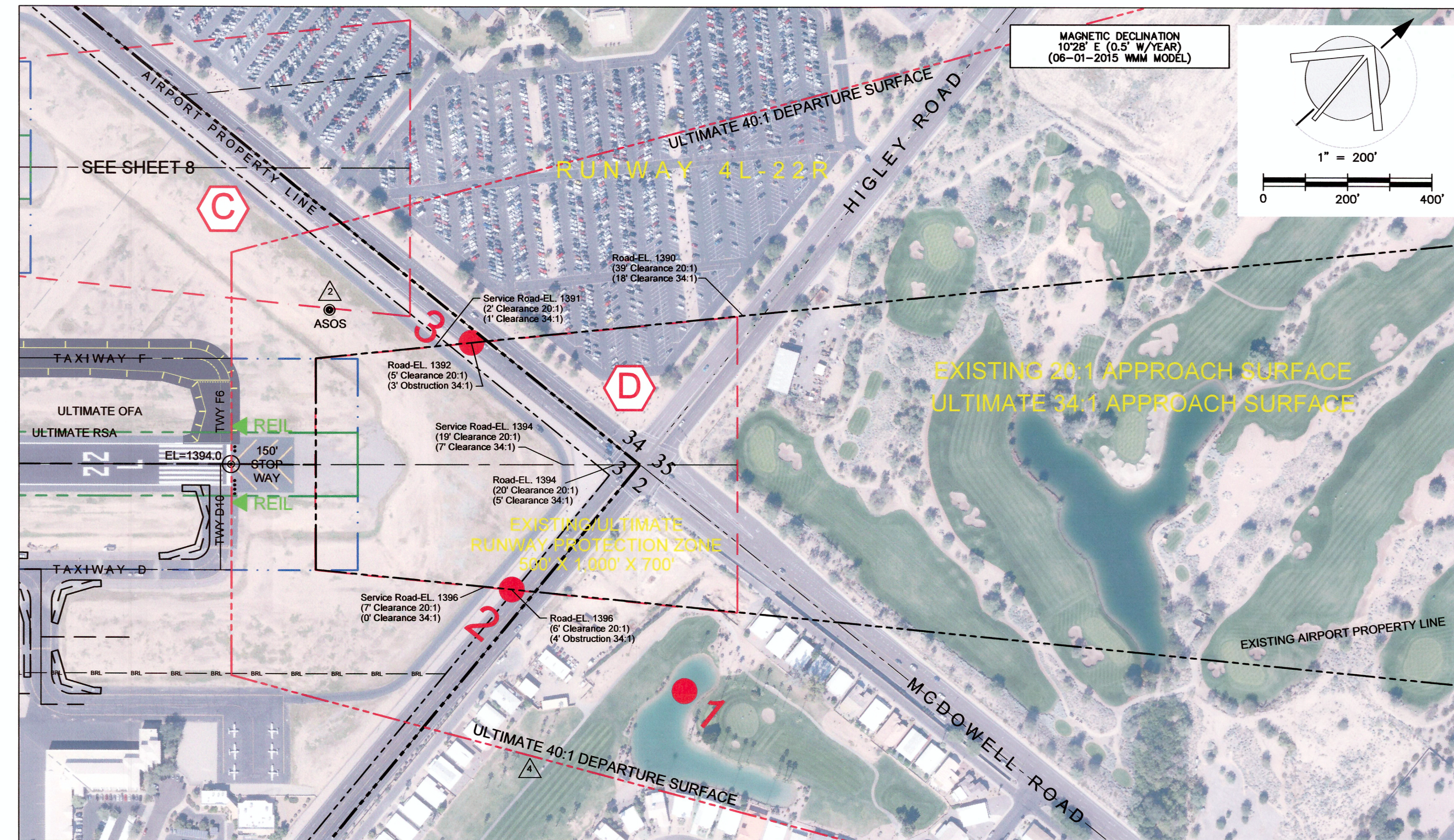
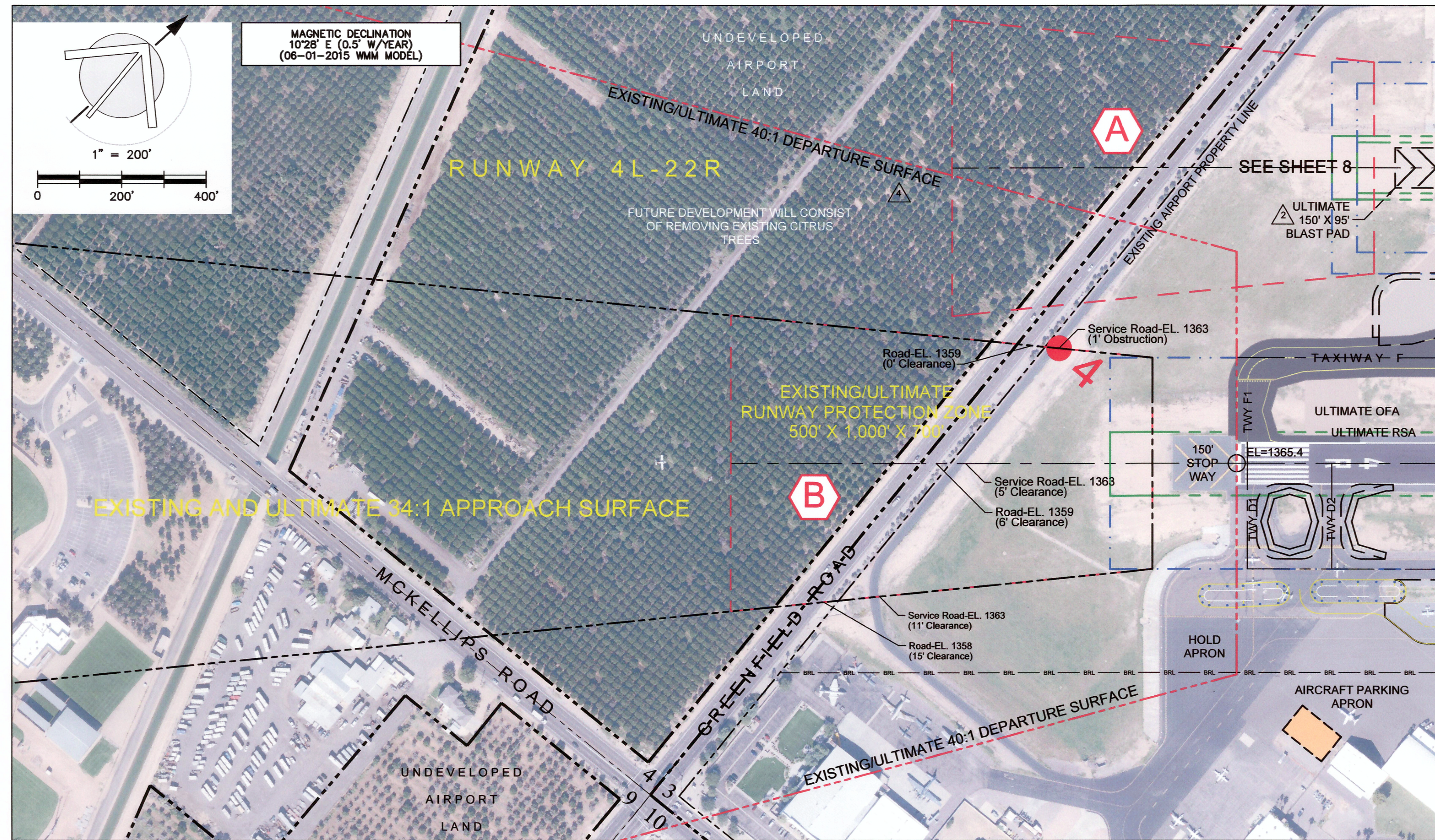
MESA-FALCON FIELD AIRPORT (FFZ)
 City of Mesa, Arizona

nicholas j pela & associates
 airport consultants
 2930 East Northern Ave., Bldg A-100
 Phoenix, Arizona 85028
 (602) 349-9967
 nicholas.pela@nicholaspela.com

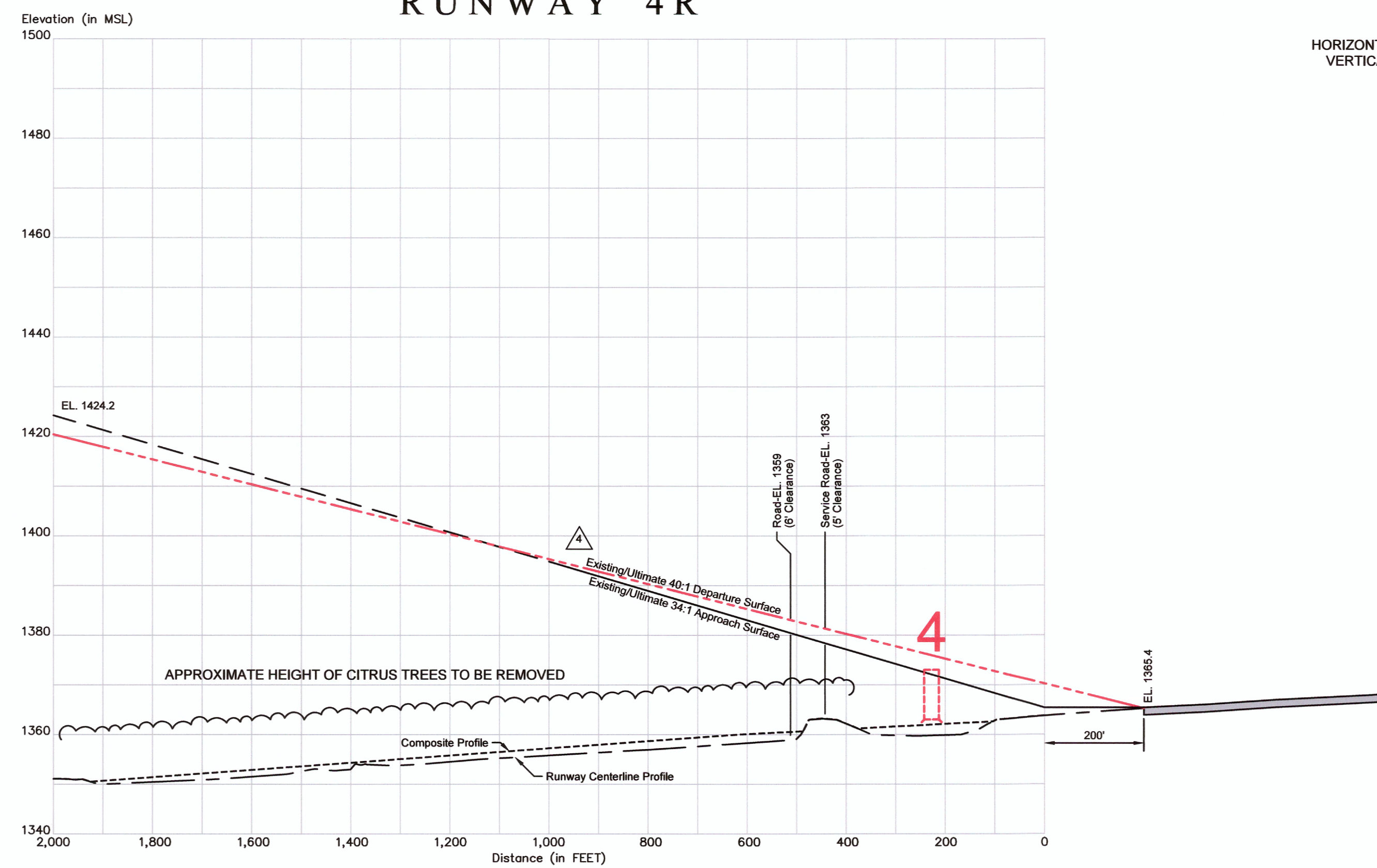
REVISION DESCRIPTION	DATE
UPDATE ALP - EXISTING AND ULTIMATE IMPROVEMENTS	01/20/2016
ADD EXISTING ASOS AND ULTIMATE RWY 4L-22R BLAST PADS	07/15/2016
HANGAR DEVELOPMENT AREA REVISIONS	10/28/2016
REVISED TO SHOW EXISTING RWY 4L NP APPROACH	12/02/2016

RUNWAY APPROACH SURFACES and RUNWAY PROFILES
 MESA - FALCON FIELD AIRPORT (FFZ)
 MESA, ARIZONA

Planning:	NJP	Sheet No.	6
Drawn:	NJP	of	10
Checked:	RT		
Date:	07/15/2016		

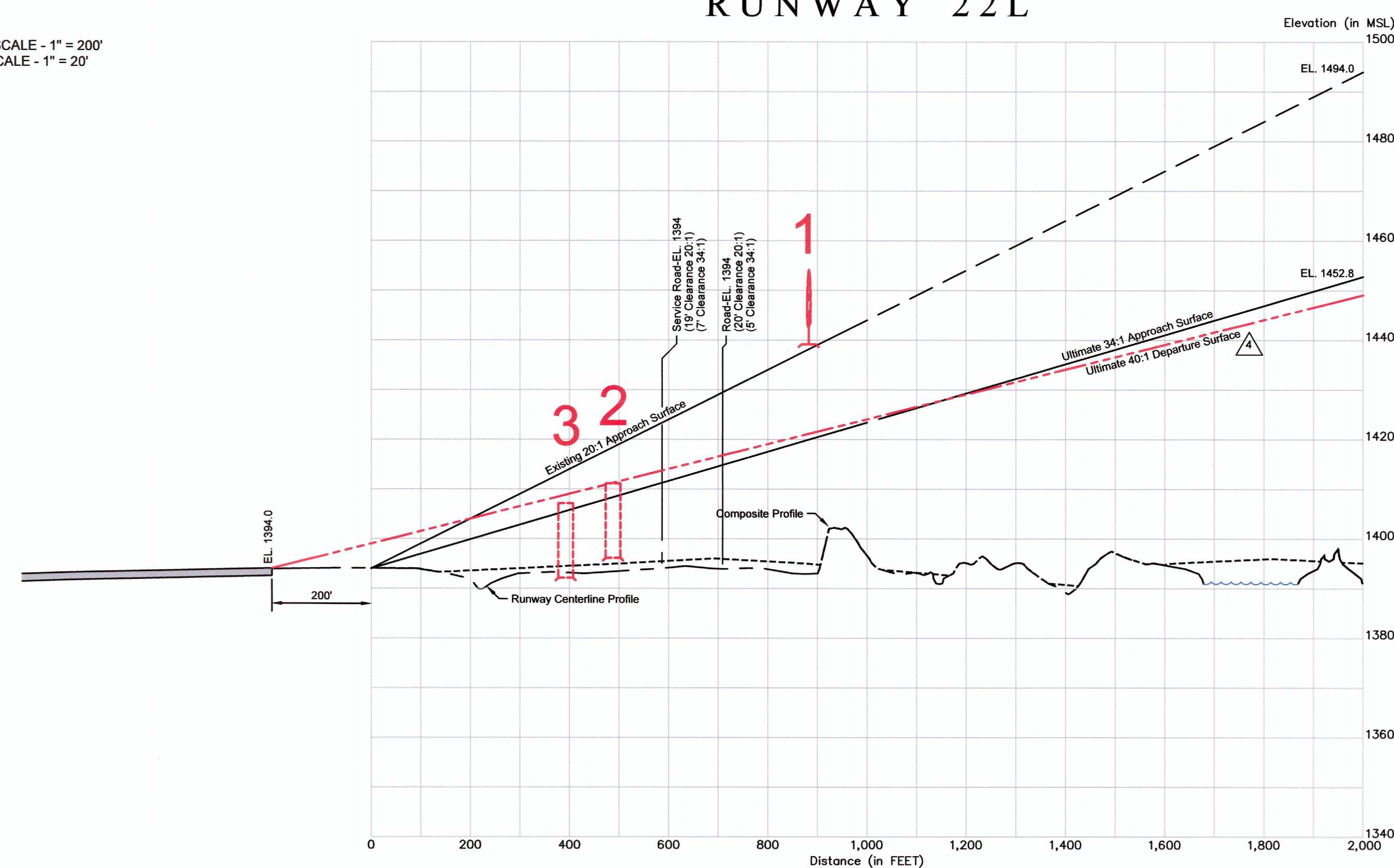


RUNWAY 4R



HORIZONTAL SCALE - 1" = 200'
VERTICAL SCALE - 1" = 20'

RUNWAY 22L



OBSTRUCTION TABLE					
Object Description	Object Elevation	Obstructed Part 77 Surface	Surface Elevation	Object Penetration	Proposed Object Disposition
1. TREE	1454	7:1 TRANSITIONAL SURFACE	1437	17'	REQUEST AERONAUTICAL STUDY
2. ROAD	1411	34:1 APPROACH SURFACE	1407	4'	REQUEST AERONAUTICAL STUDY
3. ROAD	1407	34:1 APPROACH SURFACE	1404	3'	REQUEST AERONAUTICAL STUDY
4. SERVICE ROAD	1373	34:1 APPROACH SURFACE	1372	1'	REQUEST AERONAUTICAL STUDY

SOURCES OF INFORMATION:
ALL FAR PART 77 OBSTRUCTION INFORMATION ON THIS DRAWING IS FROM THE PREVIOUS AIRPORT LAYOUT PLAN, PREPARED BY COFFMAN ASSOCIATES AND APPROVED BY THE FAA ON NOVEMBER 16, 2007. ★
BACKGROUND MAPPING IS MARICOPA COUNTY GIS IMAGING, DATED MAY, 2015. GROUND CONTOURS ARE FROM THE PREVIOUS ALP, ORIGINALLY GENERATED IN 2007 AND UPDATED IN 2014 BY DIBBLE ENGINEERING.
★ NOTE: NICHOLAS J PELA & ASSOCIATES AND DIBBLE ENGINEERING DO NOT GUARANTEE THE ACCURACY OF THIS INFORMATION.

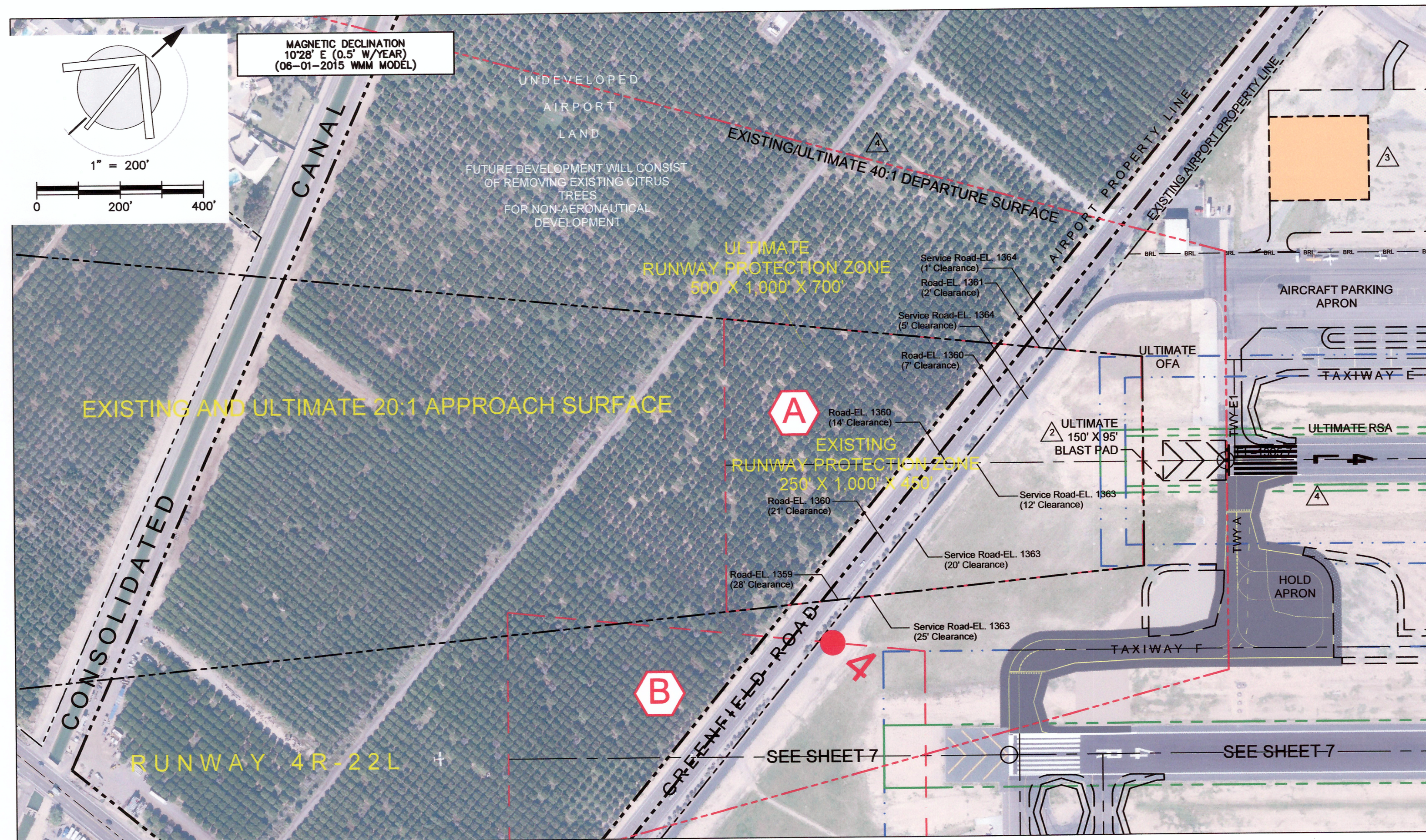
MESA-FALCON FIELD AIRPORT (FFZ)
City of Mesa, Arizona

nicholas j pela & associates
airport consultants
2930 East Northern Ave. Bldg A-100
Phoenix, Arizona 85028
(602) 349-9967
nicholas.pela@nicholaspela.com

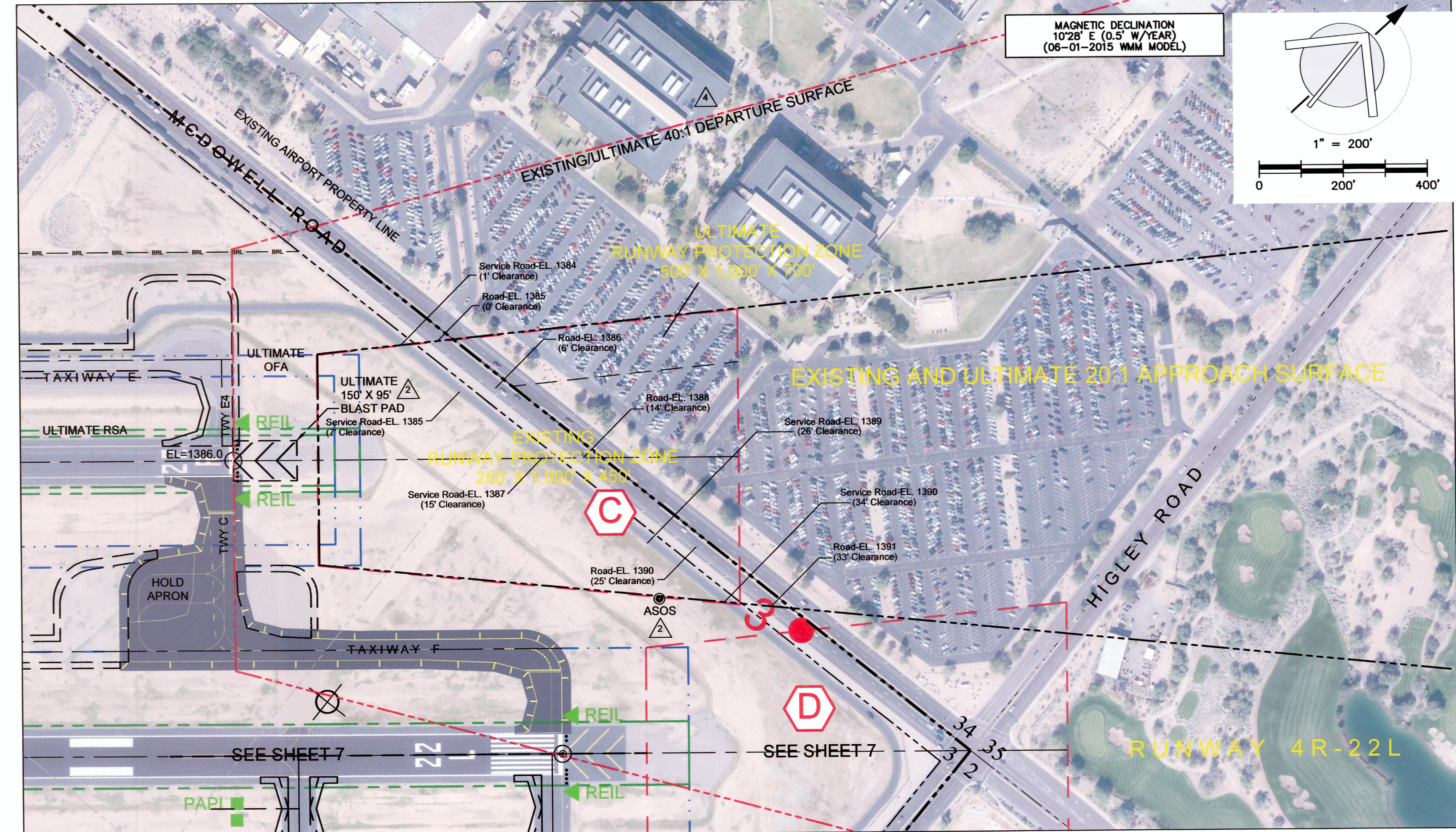
REVISION DESCRIPTION	DATE
△ UPDATE ALP - EXISTING AND ULTIMATE IMPROVEMENTS	01/20/2016
△ ADD EXISTING ASOS AND ULTIMATE RWY 4L-22R BLAST PADS	07/15/2016
△ HANGAR DEVELOPMENT AREA REVISIONS	10/26/2016
△ REVISED TO SHOW EXISTING RWY 4L NP APPROACH	12/02/2016

RUNWAY 4R-22L INNER APPROACH SURFACE DETAILS
MESA - FALCON FIELD AIRPORT (FFZ)
MESA, ARIZONA

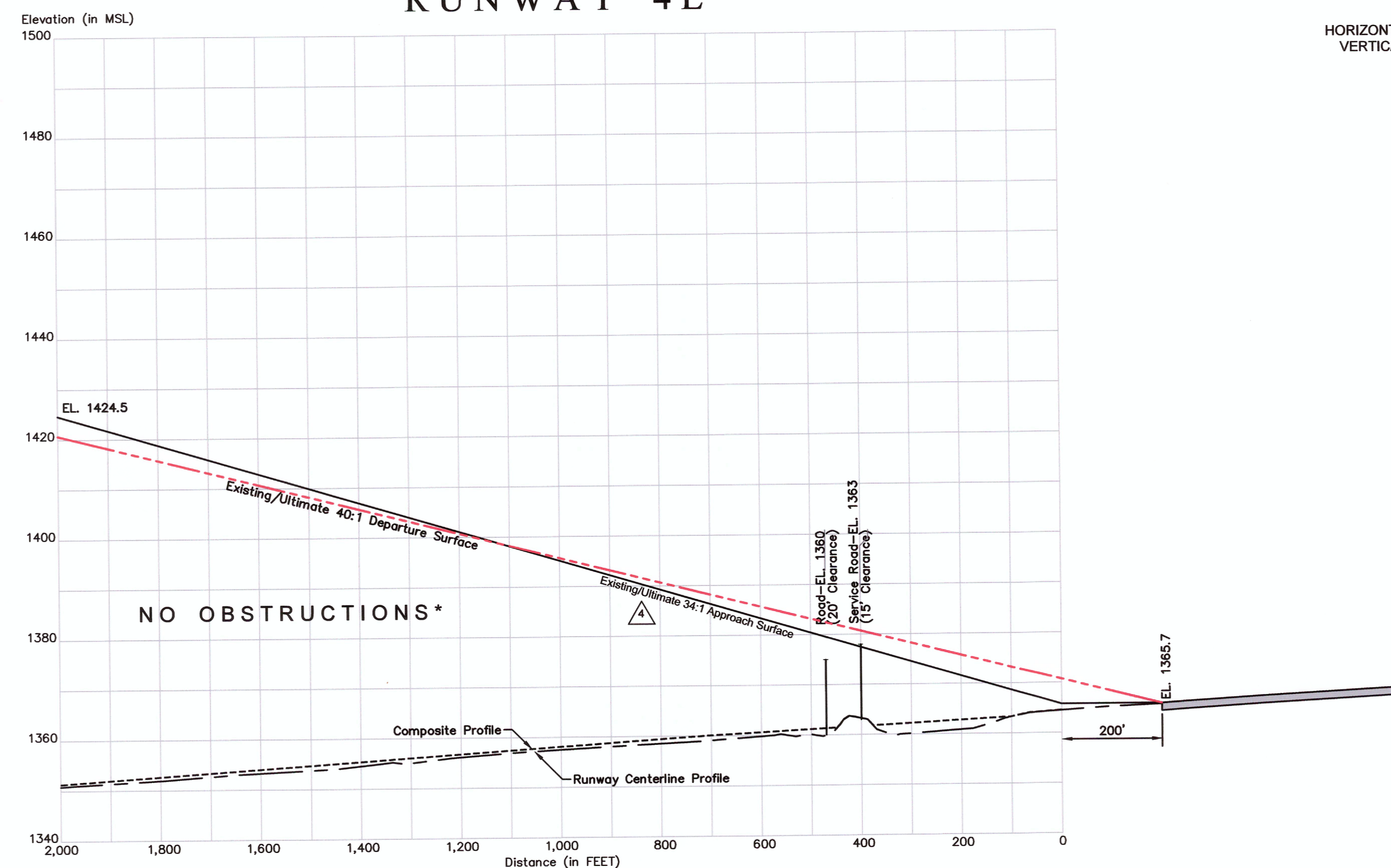
Planning:	NJP	Sheet No. 7 of 10
Drawn:	NJP	
Checked:	RT	
Date:	07/15/2016	



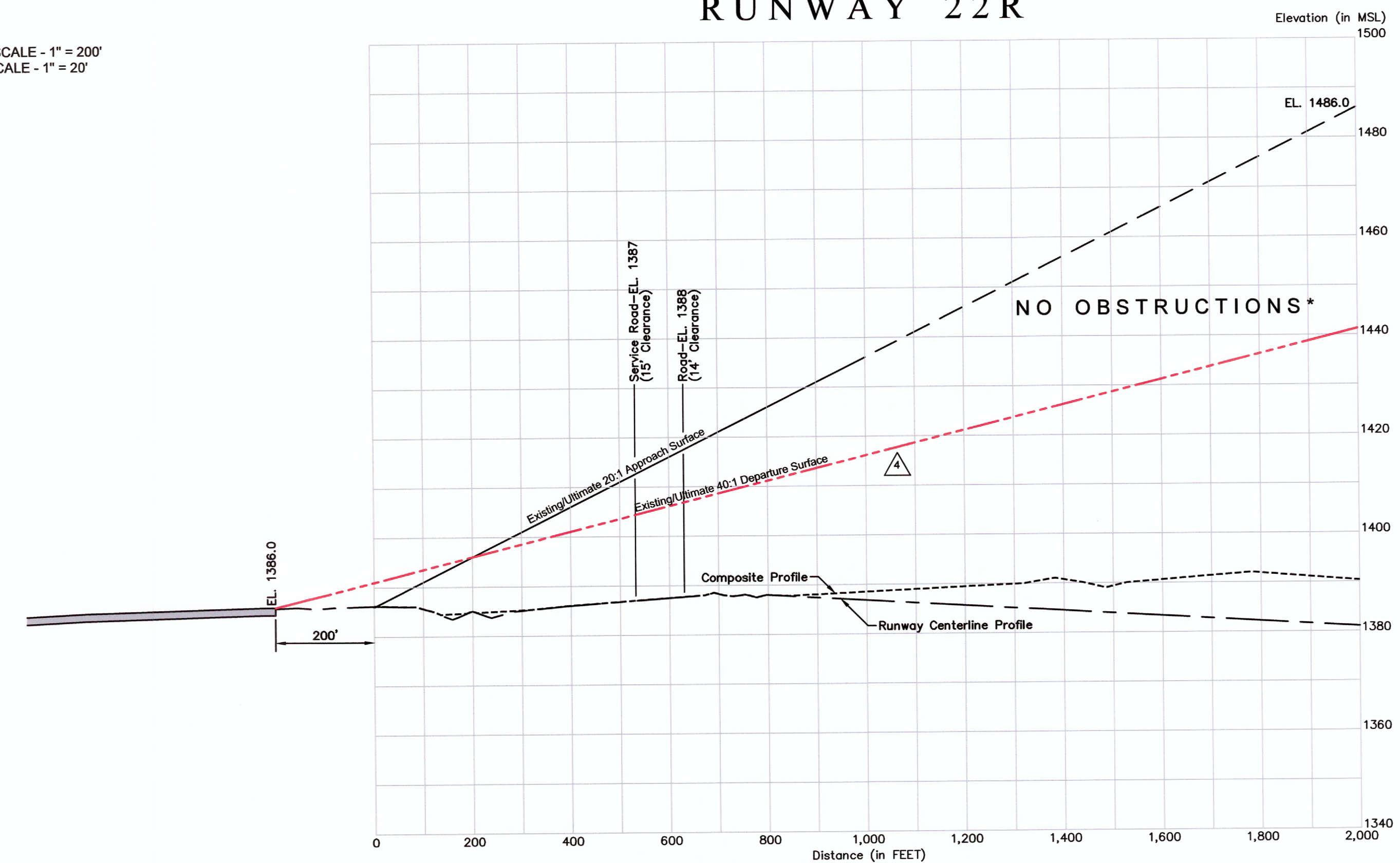
RUNWAY 4L



RUNWAY 22R



HORIZONTAL SCALE - 1" = 200'
VERTICAL SCALE - 1" = 20'



SOURCES OF INFORMATION:
ALL FAR PART 77 OBSTRUCTION INFORMATION ON THIS DRAWING IS FROM THE PREVIOUS AIRPORT LAYOUT PLAN, PREPARED BY COFFMAN ASSOCIATES AND APPROVED BY THE FAA ON NOVEMBER 16, 2007. *
BACKGROUND MAPPING IS MARICOPA COUNTY GIS IMAGING, DATED MAY, 2015. GROUND CONTOURS ARE FROM THE PREVIOUS ALP. ORIGINALLY GENERATED IN 2007 AND UPDATED IN 2014 BY DIBBLE ENGINEERING.

* NOTE: NICHOLAS J PELA & ASSOCIATES AND DIBBLE ENGINEERING DO NOT GUARANTEE THE ACCURACY OF THIS INFORMATION.

nicholas j pela & associates
airport consultants
2930 East Northern Ave, Bldg A-100
Phoenix, Arizona 85028
(602) 349-3937
nicholas.pela@nicholaspela.com

MESA-FALCON FIELD AIRPORT (FFZ)
City of Mesa, Arizona

REVISION DESCRIPTION	DATE
UPDATE ALP - EXISTING AND ULTIMATE IMPROVEMENTS	01/20/2016
ADD EXISTING ASOS AND ULTIMATE RWY 4L-22R BLAST PADS	07/15/2016
HANGAR DEVELOPMENT AREA REVISIONS	10/26/2016
REVISED TO SHOW EXISTING RWY 4L NP APPROACH	12/02/2016

RUNWAY 4L-22R INNER APPROACH SURFACE DETAILS
MESA - FALCON FIELD AIRPORT (FFZ)
MESA, ARIZONA

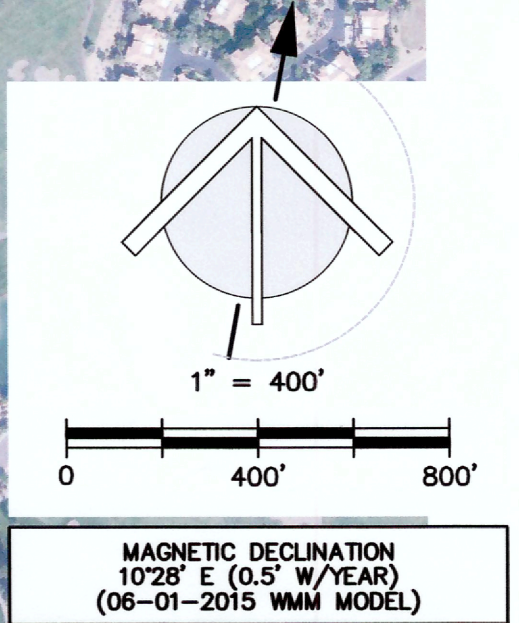
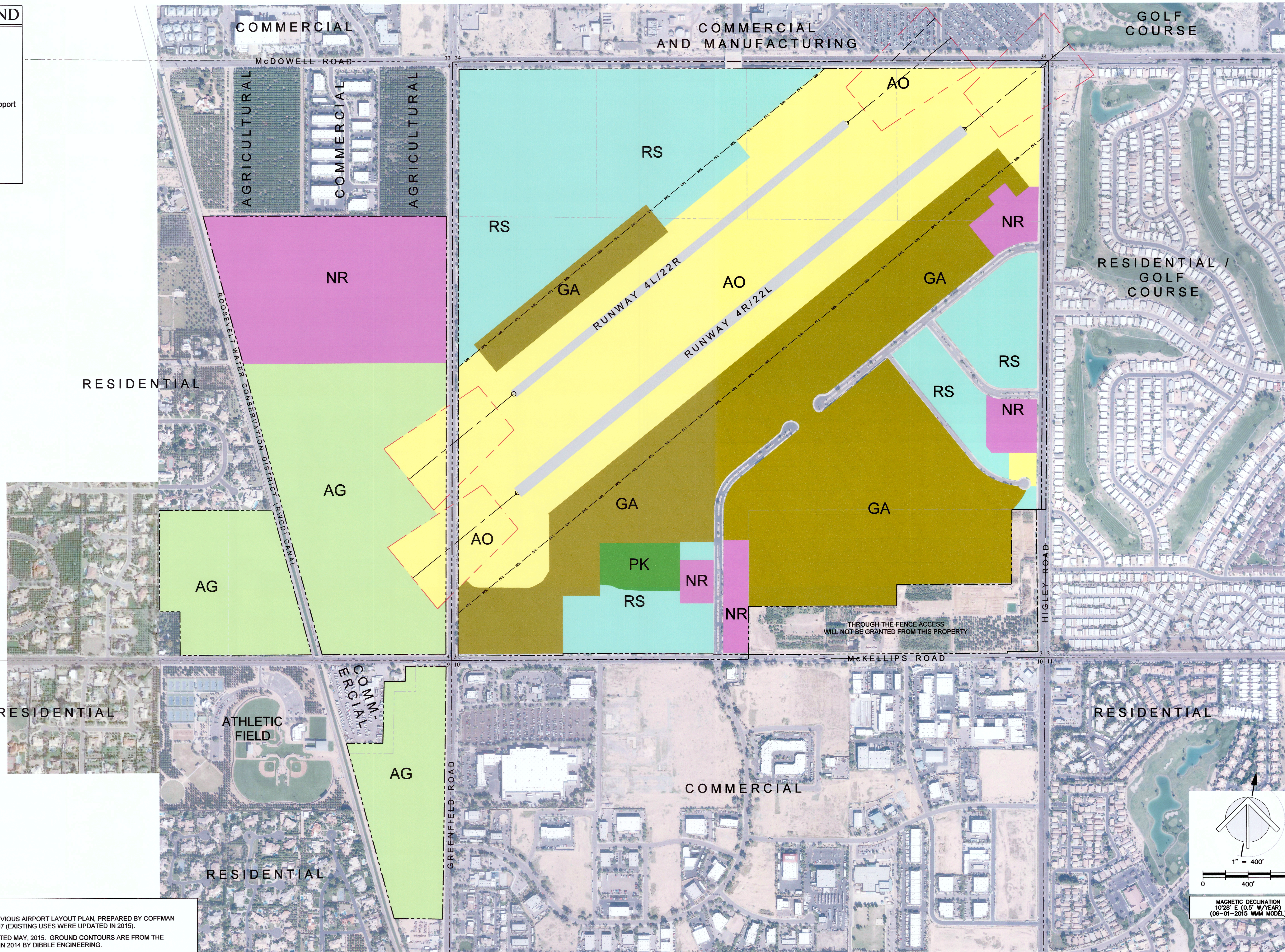
Object Description	Object Elevation	Obstructed Part 77 Surface	Surface Elevation	Object Penetration	Proposed Object Disposition
NONE*					

Planning: NJP
Drawn: NJP
Checked: RT
Date: 07/15/2016

Sheet No.
8
of
10

AIRPORT LAND USE LEGEND

- AO** Airfield Operations
- GA** General Aviation
- RS** Aviation Related Revenue Support
- NR** Non-Aeronautical Related Revenue Support
- HS** Historical Site
- PK** Park
- AG** Agriculture/Open Space



SOURCES OF INFORMATION:
 LAND USE INFORMATION ON THIS DRAWING WAS FROM THE PREVIOUS AIRPORT LAYOUT PLAN, PREPARED BY COFFMAN ASSOCIATES AND APPROVED BY THE FAA ON NOVEMBER 16, 2007 (EXISTING USES WERE UPDATED IN 2015).
 BACKGROUND MAPPING IS MARICOPA COUNTY GIS IMAGING, DATED MAY, 2015. GROUND CONTOURS ARE FROM THE PREVIOUS ALP, ORIGINALLY GENERATED IN 2007 AND UPDATED IN 2014 BY DIBBLE ENGINEERING.

REVISION DESCRIPTION	DATE
△ UPDATE ALP - EXISTING AND ULTIMATE IMPROVEMENTS	01/20/2016
△ ADD EXISTING ASOS and ULTIMATE RWY 4L-22R BLAST PADS	07/15/2016
△ HANGAR DEVELOPMENT AREA REVISIONS	10/26/2016
△ REVISED TO SHOW EXISTING RWY 4L NP APPROACH	12/02/2016

LAND USE DRAWING
MESA - FALCON FIELD AIRPORT (FFZ)
MESA, ARIZONA

Planning:	NJP	Sheet No.	9
Drawn:	NJP		
Checked:	RT		
Date:	07/15/2016		of 10

MESA-FALCON FIELD AIRPORT (FFZ)

City of Mesa, Arizona

nicholas j. pela & associates
 airport consultants

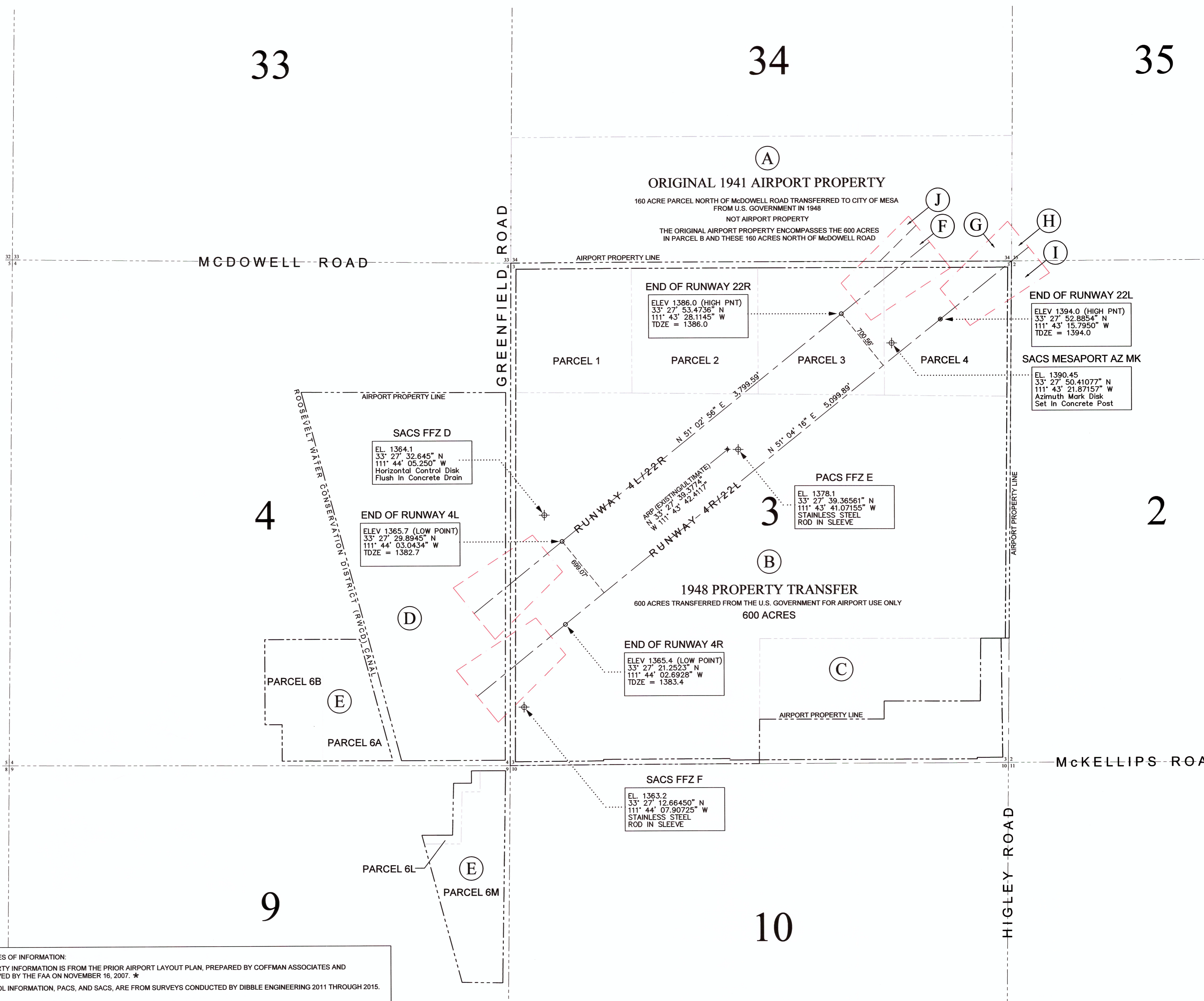
2930 East Northern Ave., Bldg A-100
 Phoenix, Arizona 85028
 (602) 349-9967
 nicholas.pela@nicholaspela.com

33

34

35

PARCEL DESCRIPTIONS	
FEE OWNERSHIP	EASEMENTS
(A) TYPE: Warranty Deed PARCEL: (See legal description) DATE: 6-28-41 ACRES: 600 RECORDED AT: Maricopa Cty DOCKET #: 19673 PAGE #: Unknown NOTE: Deed recorded in Book 357, Page 588 (See Note 1)	(F) TYPE: Avigation PARCEL: E1 OWNER: The Boeing Company BY: City of Mesa DATE: January 1988 RECORDED: No DATE: Unknown DOCKET #: Unknown PAGE #: Unknown
(B) TYPE: Instrument of Transfer PARCEL: (See legal description) DATE: 8-17-48 ACRES: 600 RECORDED AT: Maricopa Cty DOCKET #: 270 PAGE #: 90-101 (See Note 2)	(G) TYPE: Avigation PARCEL: E2 OWNER: The Boeing Company BY: City of Mesa DATE: January 1988 RECORDED: No DATE: Unknown DOCKET #: Unknown PAGE #: Unknown
TYPE: Instrument of Release PARCEL: (See legal description) DATE: 7-29-59 NOTE: Permits the use of property and Buildings for commercial/industrial purposes.	(H) TYPE: Avigation PARCEL: E3 OWNER: The Boeing Company BY: City of Mesa DATE: January 1988 RECORDED: No DATE: Unknown DOCKET #: Unknown PAGE #: Unknown
TYPE: Instrument of Release PARCEL: (See legal description) DATE: 3-15-66 NOTE: Deleted provision in Instrument of Transfer to allow U.S. Government to take possession of airport property without compensation.	(I) TYPE: Avigation PARCEL: E4 OWNER: Apache Wells Country Club BY: City of Mesa DATE: Unknown RECORDED: No DATE: Unknown DOCKET #: Unknown PAGE #: Unknown
(C) TYPE: Warranty Deed PARCEL: 141-36-003B DATE: 12-28-76 ACRES: 39.9 RECORDED AT: Maricopa Cty DOCKET #: 12008 PAGE #: 326	(J) TYPE: Avigation PARCEL: E5 OWNER: The Boeing Company BY: City of Mesa DATE: January 1988 RECORDED: No DATE: Unknown DOCKET #: Unknown PAGE #: Unknown
(D) TYPE: Fee Simple PARCEL: 141-28-12A DATE: Unknown ACRES: 56.341 RECORDED AT: Maricopa Cty DOCKET #: 09015 PAGE #: 754	GENERAL NOTES 1. This property includes Parcels 1, 2, 3 and 4 located in the north half of the north half of Section 3, Township 1 North, Range 6 East, Gila and Salt River Base Meridian. 2. This property was transferred from the U.S. Government to the City of Mesa under the Surplus Property Act of 1947 and was to be used only for an airport. The transfer documents required that all the property (including buildings/facilities) be used for aviation purposes only. The property originally taken by the U.S. Government included 160 acres north of McDowell Road. This property was not included in the Transfer agreement and was returned to the City of Mesa. 3. A search of all the property records in the City of Mesa, McDonnell Douglas Helicopters, the Maricopa County Recorder and the Title companies, failed to produce any recorded avigation easements. It is recommended that the Sponsor secure recorded Avigation Easements for these properties.
TYPE: Fee Simple PARCEL: 141-28-07 DATE: 2-2-78 ACRES: 37.006 RECORDED AT: Maricopa Cty DOCKET #: 12693 PAGE #: 39	
(E) TYPE: Special Warranty PARCEL: 141-28-006A DATE: 5-19-95 ACRES: 14.948 RECORDED AT: Maricopa Cty DOCKET #: 95-284558 PAGE #: --	
TYPE: Special Warranty PARCEL: 141-28-006B DATE: 5-19-95 ACRES: 18.182 RECORDED AT: Maricopa Cty DOCKET #: 95-284558 PAGE #: --	



SOURCES OF INFORMATION:
PROPERTY INFORMATION IS FROM THE PRIOR AIRPORT LAYOUT PLAN, PREPARED BY COFFMAN ASSOCIATES AND APPROVED BY THE FAA ON NOVEMBER 16, 2007. ★
CONTROL INFORMATION, PACS, AND SACS, ARE FROM SURVEYS CONDUCTED BY DIBBLE ENGINEERING 2011 THROUGH 2015.
...
★ NOTE: NICHOLAS J PELA & ASSOCIATES AND DIBBLE ENGINEERING DO NOT GUARANTEE THE ACCURACY OF THIS INFORMATION.

nicholas j pela & associates
airport consultants

2930 East Northern Ave, Bldg A-100
Phoenix, Arizona 85028
(602) 349-9967
nicholas.pela@nicholaspela.com

REVISION DESCRIPTION	DATE
UPDATE ALP - EXISTING AND ULTIMATE IMPROVEMENTS	01/20/2016
ADD EXISTING ASOS and ULTIMATE RWY 4L-22R BLAST PADS	07/15/2016
HANGAR DEVELOPMENT AREA REVISIONS	10/26/2016
REVISED TO SHOW EXISTING RWY 4L NP APPROACH	12/02/2016

HORIZONTAL AND VERTICAL CONTROL / PROPERTY MAP

MESA - FALCON FIELD AIRPORT (FFZ)

MESA, ARIZONA

Planning:	NJP	Sheet No.	10
Drawn:	NJP	of	10
Checked:	RT		
Date:	07/15/2016		