

AIRPORT MASTER PLAN

ERIC MARCUS

MUNICIPAL AIRPORT

AJO, ARIZONA

AIRPORT LAYOUT PLAN SET

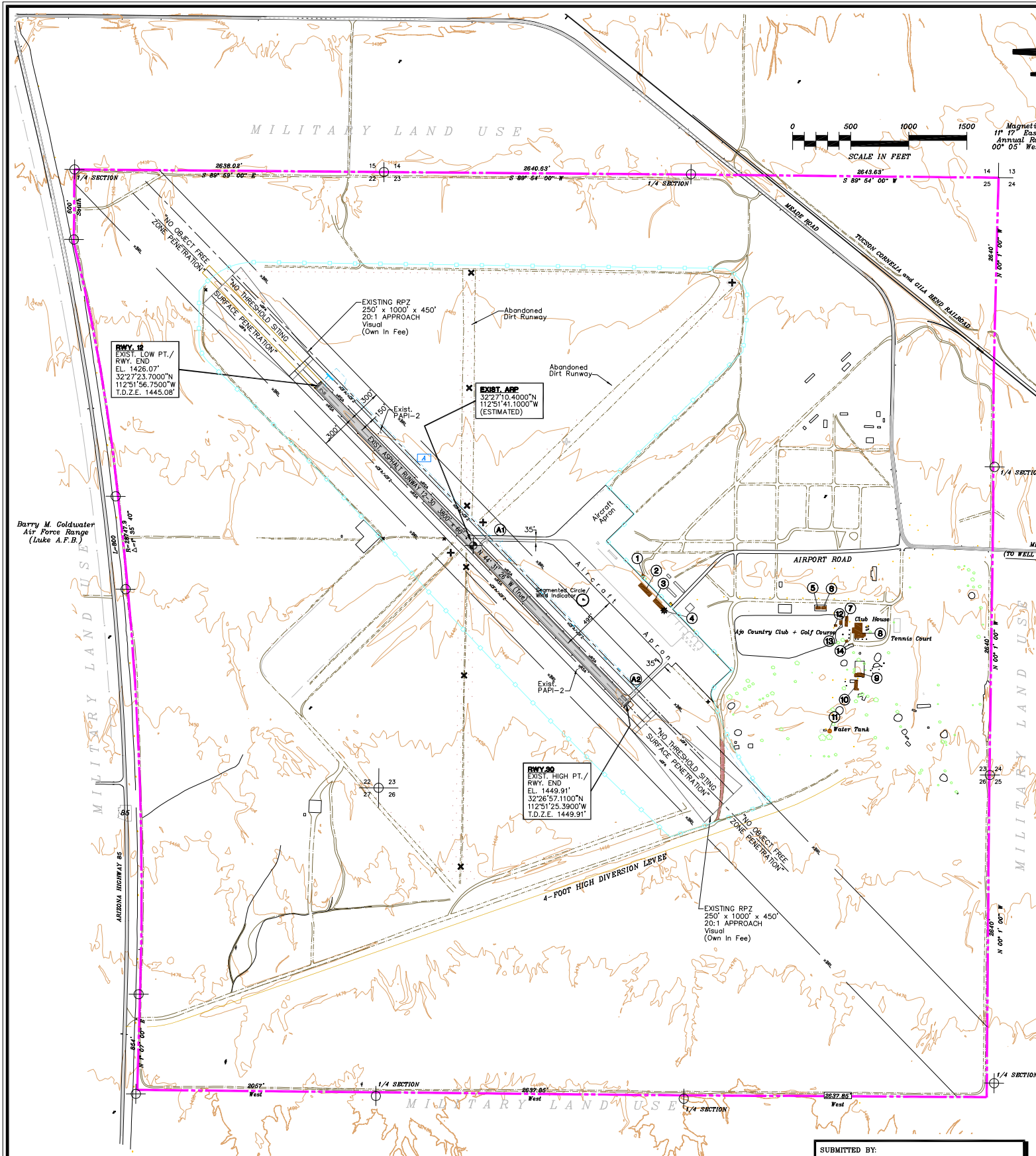
DRAFT

INDEX OF DRAWINGS

- | | |
|--|---|
| 1. AIRPORT LAYOUT PLAN | 5. RUNWAY 12-30 PROFILE & OUTER
APPROACH SURFACE PROFILE DRAWING |
| 2. TERMINAL AREA PLAN | 6. DEPARTURE SURFACE DRAWING |
| 3. AIRPORT AIRSPACE DRAWING | 7. ON-AIRPORT LAND USE DRAWING |
| 4. INNER PORTION OF THE RUNWAY 12-30
APPROACH SURFACE DRAWING | 8. EXHIBIT "A" PROPERTY MAP |

PREPARED FOR
PIMA COUNTY, ARIZONA





RUNWAY END COORDINATES (NAD 83)			
RUNWAY	EXISTING	ULTIMATE	
Runway 12	Latitude 32°27'23.7000"N Longitude 112°51'56.7500"W	SAME SAME	
Runway 30	Latitude 32°26'57.1100"N Longitude 112°51'25.3900"W	SAME SAME	

LEGEND		
EXISTING	ULTIMATE	DESCRIPTION
+	+	AIRPORT PROPERTY LINE
+	+	AIRPORT REFERENCE POINT (ARP)
+	+	AIRPORT ROTATING BEACON
+	+	BUILDING AND FACILITIES
+	+	BUILDING RESTRICTION LINE (BRL)
+	+	OBJECT FREE AREA (OFA)
+	+	RUNWAY SAFETY AREA (RSA)
+	+	OBSTACLE FREE ZONE (OFZ)
+	+	FACILITY CONSTRUCTION
+	+	FENCING
+	+	NAVIGATIONAL AID INSTALLATION
+	+	RUNWAY THRESHOLD LIGHTS
+	+	RUNWAY PROTECTION ZONE (RPZ)
+	+	SEGMENTED CIRCLE LIGHTED WINDCONE
+	+	WIND INDICATOR (Lighted)
+	+	TOPOGRAPHIC CONTOURS
+	+	SECTION CORNER
+	+	TAXIWAY DESIGNATION
+	+	HOLD POSITION MARKINGS
+	+	CLOSED OR ABANDONED TAXIWAY/RUNWAY

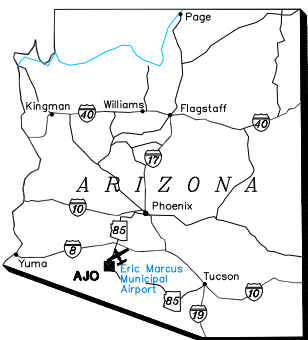
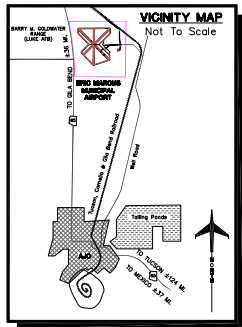
BUILDINGS/FACILITIES		
EXISTING	DESCRIPTION	TOP EL.
1	PORTABLE HANGAR	1442.10'
2	T-HANGAR	1458.09'
3	T-HANGAR	1457.51'
4	AIRPORT BEACON	1451.38'
5	GOLF CART BARN	1456.10'
6	GOLF CART BARN	1456.10'
7	STORAGE	1458.00'
8	CLUBHOUSE	1461.00'
9	POOL BUILDING	1465.00'
10	MAINTENANCE BARN	1467.00'
11	WATER TANK	1468.00'
12	STORAGE	1461.00'
13	STORAGE	1461.00'
14	STORAGE	1461.00'

RUNWAY DATA		RUNWAY 12-30			
		EXISTING		ULTIMATE	
AIRCRAFT APPROACH CATEGORY-DESIGN GROUP	B-1*	12	30	12	30
		12	30	12	30
FAR PART 77 CATEGORY	VISUAL	VISUAL	SAME	SAME	SAME
APPROACH VISIBILITY MINIMUMS	NONE	NONE	NONE	NONE	NONE
DESIGN CRITICAL AIRCRAFT	BEACH BARON 58				
WINGSPAN OF DESIGN AIRCRAFT	37'				
UNDERCARRIAGE WIDTH OF DESIGN AIRCRAFT	9'3"				
APPROACH SPEED (KNOTS) OF DESIGN AIRCRAFT	86				
MAXIMUM CERTIFIED TAKEOFF WEIGHT (LBS) OF DESIGN AIRCRAFT	5,500				
RUNWAY EFFECTIVE GRADIENT	0.62%				
RUNWAY MAXIMUM GRADIENT	0.9%				
PAYMENT DESIGN STRENGTH (in thousand lbs./f)	12,000(S)				
APPROACH SLOPE	20:1	20:1	SAME	SAME	SAME
RUNWAY END ELEVATION (MSL)	1426.07'	1449.91'	SAME	SAME	SAME
RUNWAY TOUCHDOWN ZONE ELEVATION (MSL)	1445.08'	1449.91'	SAME	SAME	SAME
RUNWAY HIGH POINT ELEVATION (MSL)	1449.91'				
RUNWAY LOW POINT ELEVATION (MSL)	1426.07'				
LINE OF SIGHT REQUIREMENT MET	YES				
RUNWAY LENGTH	3800'				
RUNWAY WIDTH	60'				
RUNWAY BEARING (TRUE)	N 44°31'26" W				
RUNWAY SAFETY AREA LENGTH BEYOND STOP END OF RUNWAY	240'	240'	SAME	SAME	SAME
RUNWAY SAFETY AREA WIDTH	120'				
RUNWAY OBJECT FREE AREA LENGTH BEYOND STOP END OF RUNWAY	240'	240'	SAME	SAME	SAME
RUNWAY OBJECT FREE AREA WIDTH	250'				
RUNWAY OBSTACLE FREE ZONE LENGTH BEYOND RUNWAY END	200'	200'	SAME	SAME	SAME
RUNWAY OBSTACLE FREE ZONE WIDTH	250'				
DISTANCE FROM RUNWAY CENTERLINE TO HOLD BARS AND SIGNS	125'				
RUNWAY MARKING	BASIC	BASIC	BASIC	BASIC	BASIC
STANDARD SEPARATION - RUNWAY CL TO PARALLEL TAXIWAY CL	150'				
STANDARD SEPARATION - TAXIWAY CL TO FIXED OR MOVABLE OBJECT	45'				
RUNWAY SURFACE/PAYMENT MATERIAL	Asphalt				
RUNWAY LIGHTING	MIRL				
TAXIWAY WIDTH	35'				
TAXIWAY SURFACE MATERIAL	Asphalt				
TAXIWAY OBJECT FREE AREA WIDTH	89'				
TAXIWAY SAFETY AREA WIDTH	49'				
TAXIWAY WINGTIP CLEARANCE	20'				
TAXIWAY MARKING	HOLD/CENTER				
TAXIWAY LIGHTING	MTL (entry/exit)				
RUNWAY NAVIGATIONAL AIDS	NONE				
RUNWAY VISUAL AIDS	Airport Beacon PAPI-2 Segmented Circle Wind Cone				

* Pavement strengths are expressed in Single(S), Dual(D), and Dual Tandem (DT) wheel loading capacities.
* Small Airplane Exclusive

AIRPORT DATA			
OWNER: PIMA COUNTY ARIZONA		ERIC MARCUS MUNICIPAL AIRPORT (P01)	
CITY: AJO, ARIZONA		AIRPORT NPIAS CODE: GENERAL AVIATION	
RANGE: R 5 W		COUNTY: PIMA COUNTY	
		TOWNSHIP: T 11 S	
EXISTING	ULTIMATE		
		12	30
AIRPORT REFERENCE CODE	B-1*	SAME	SAME
AIRPORT ELEVATION (MSL)	1449.91' MSL	SAME	SAME
MEAN MAXIMUM TEMPERATURE OF HOTTEST MONTH	103.2° F (July)	SAME	SAME
AIRPORT REFERENCE POINT (ARP)	Latitude 32° 27' 10.4000" N Longitude 112° 51' 41.1000" W	SAME	SAME
COORDINATES (NAD 83)	Airport Beacon PAPI-2 Segmented Circle Wind Cone	SAME	SAME
AIRPORT NAV AIDS		SAME	SAME

GPS AT AIRPORT
* Small Airplane Exclusive



ALL WEATHER WIND COVERAGE				
Runway	10.5 Knots	13 Knots	16 Knots	20 Knots
Runway 12-30	87.40%	92.52%	97.49%	99.30%

FAA APPROVAL STAMP

SUBMITTED BY:
Coffman Associates
FOR APPROVAL BY:

APPROVED BY: ON THE DATE OF:

Airport Manager

GENERAL NOTES:

1. Depiction of features and objects, including related elevations within the runway protection zones are depicted on the INNER APPROACH SURFACE DRAWING.
2. Details concerning terminal improvements are depicted on the TERMINAL AREA PLANS.
3. Recommended land uses within the airport environs are depicted on the AIRPORT LAND USE PLAN.
4. Detail concerning airport property are depicted on the AIRPORT PROPERTY MAP.
5. Building Restriction Line (BRL) is established in accordance with F.A.R. Part 77 criteria. Building Restriction Line location may be reduced in accordance to Part 77 to limits of the Runway Object Free Area, Runway Safety Area, and/or Runway Protection Zone criteria.
6. Base Map and Contours derived from 2/5/09 aerial photography and planimetric mapping, surveyed by Stactec Inc.
7. Source for existing airport reference point coordinates and airport elevations: Airport Master Record at <http://gcr1.com/5010web/airport.cfm?site=P01>.
8. All elevations are in NAVD 88 and all horizontal coordinates are in NAD 83.
9. No threshold siting surface object penetrations.
10. All survey monuments enclosed in concrete casings.
11. Rental proceeds from non-aeronautical uses are reinvested into the airport fund.
12. No survey monuments exist based upon the standards listed in the FAA Advisory Circulars 150/5300-16, 150/5300-17 and 150/5300-18.

ERIC MARCUS MUNICIPAL AIRPORT

AIRPORT LAYOUT PLAN

AJO, ARIZONA

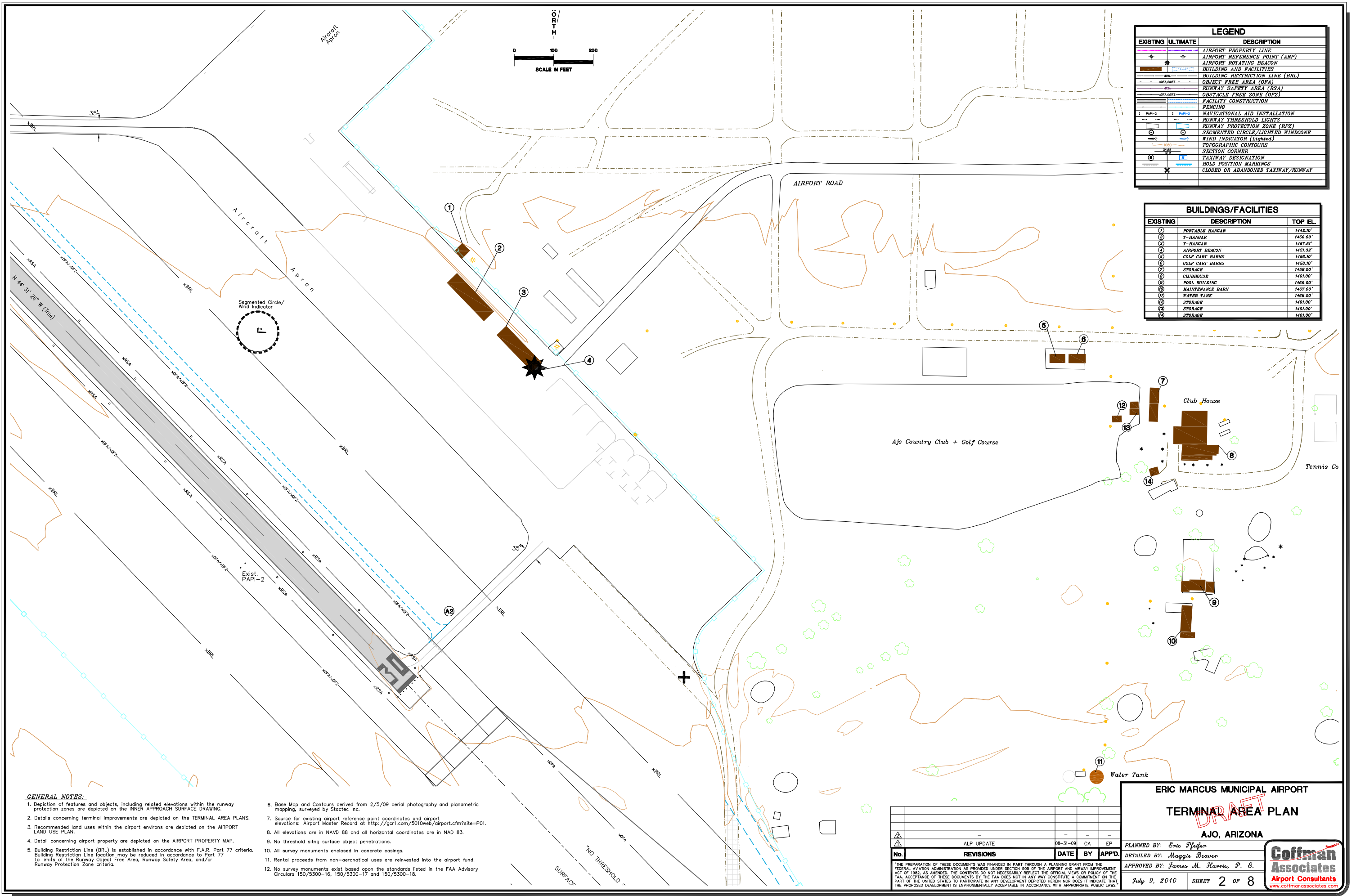
PLANNED BY: Eric Pfeiffer

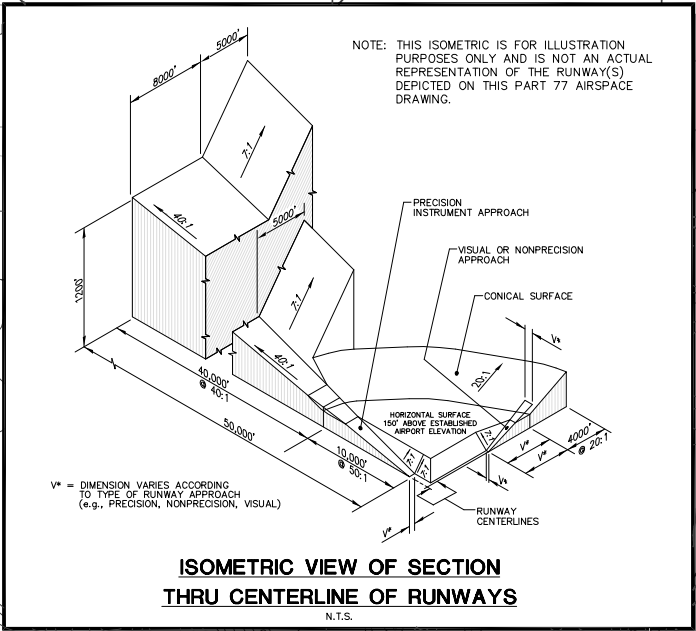
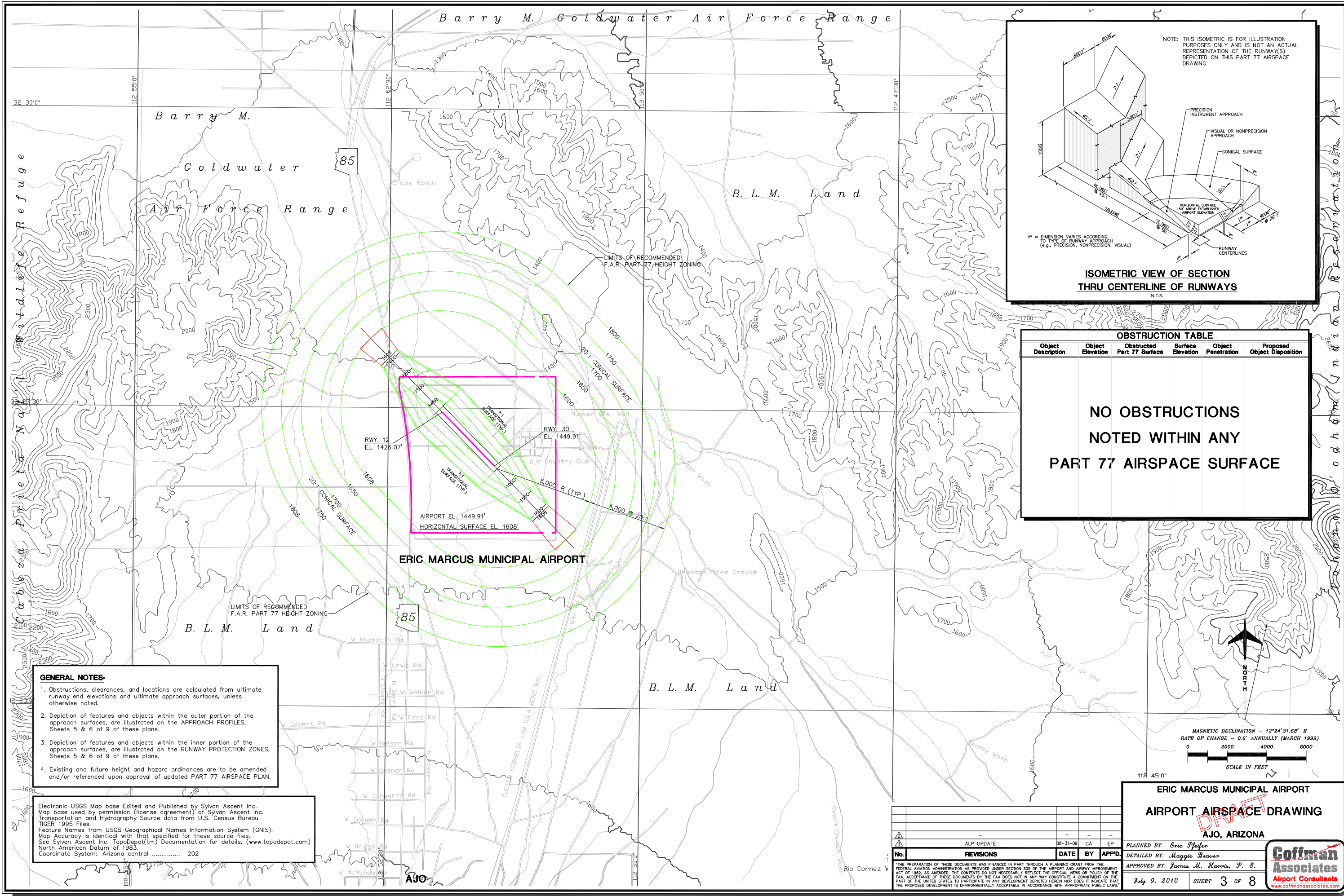
DETAILED BY: Maggie Beaver

APPROVED BY: James M. Harris, P. E.

July 9, 2010 SHEET 1 OF 8

Coffman Associates
Airport Consultants
www.coffmanassociates.com





OBSTRUCTION TABLE				
Object Description	Object Elevation	Obstructed Part 77 Surface	Surface Elevation	Object Penetration
NO OBSTRUCTIONS NOTED WITHIN ANY PART 77 AIRSPACE SURFACE				
Proposed Object Disposition				

GENERAL NOTES:

- Obstructions, clearances, and locations are calculated from ultimate runway end elevations and ultimate approach surfaces, unless otherwise noted.
- Depiction of features and objects within the outer portion of the approach surfaces, are illustrated on the APPROACH PROFILES, Sheets 5 & 6 of 9 of these plans.
- Depiction of features and objects within the inner portion of the approach surfaces, are illustrated on the RUNWAY PROTECTION ZONES, Sheets 5 & 6 of 9 of these plans.
- Existing and future height and hazard ordinances are to be amended and/or referenced upon approval of updated PART 77 AIRSPACE PLAN.

Electronic USGS Map base Edited and Published by Sylvan Ascent Inc.
Map base used by permission (license agreement) of Sylvan Ascent Inc.
Transportation and Hydrography Source data from U.S. Census Bureau
TIGER 1995 Files.
Feature Names from USGS Geographical Names Information System (GNIS).
Map Accuracy is identical with that specified for these source files.
See Sylvan Ascent Inc. TopoDepot(tm) Documentation for details. (www.topodepot.com)
North American Datum of 1983.
Coordinate System: Arizona central 202

REVISIONS				
No.	REVISIONS	DATE	BY	APP'D.
1	ALP UPDATE	08-31-09	CA	EP

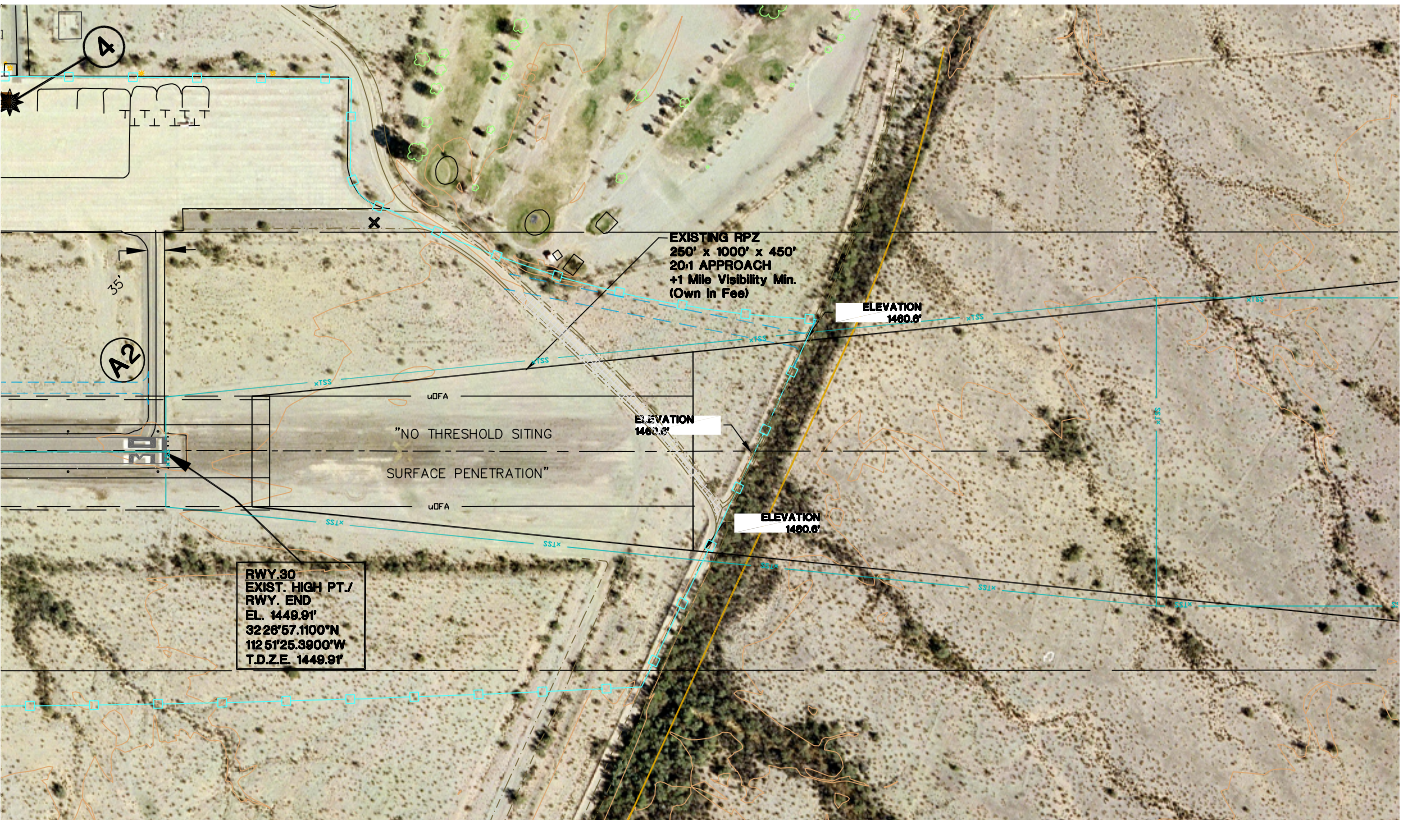
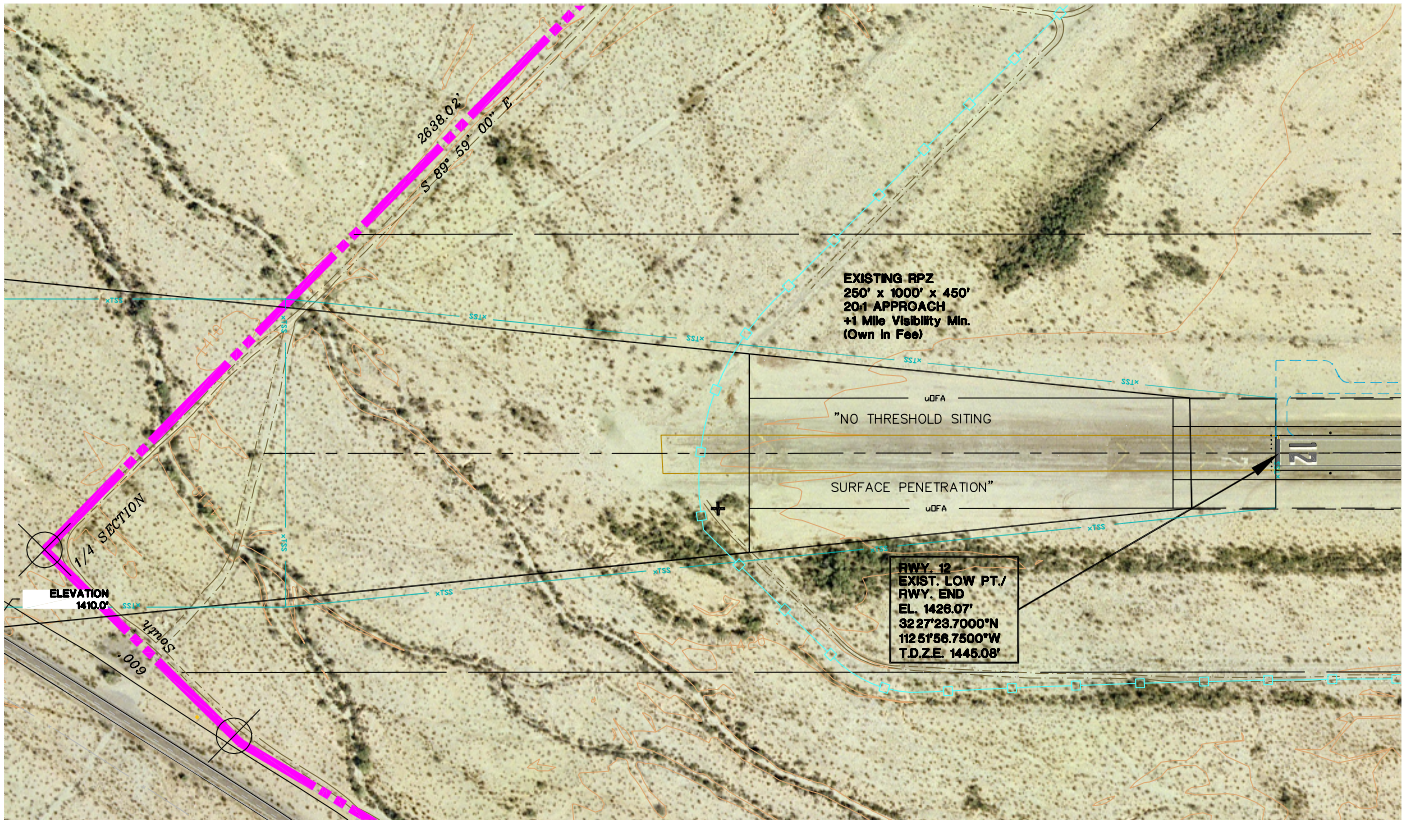
* THE PREPARATION OF THESE DOCUMENTS WAS FINANCED IN PART THROUGH A PLANNING GRANT FROM THE FEDERAL AVIATION ADMINISTRATION AS PROVIDED UNDER SECTION 505 OF THE AIRPORT AND AIRWAY IMPROVEMENT ACT OF 1982, AS AMENDED. THE CONTENTS DO NOT NECESSARILY REFLECT THE OFFICIAL VIEWS OR POLICY OF THE FAA. ACCEPTANCE OF THESE DOCUMENTS BY THE FAA DOES NOT IN ANY WAY CONSTITUTE A COMMITMENT ON THE PART OF THE UNITED STATES TO PARTICIPATE IN ANY DEVELOPMENT DEPICTED HEREIN NOR DOES IT INDICATE THAT THE PROPOSED DEVELOPMENT IS ENVIRONMENTALLY ACCEPTABLE IN ACCORDANCE WITH APPROPRIATE PUBLIC LAWS.

ERIC MARCUS MUNICIPAL AIRPORT
AIRPORT AIRSPACE DRAWING
AJO, ARIZONA

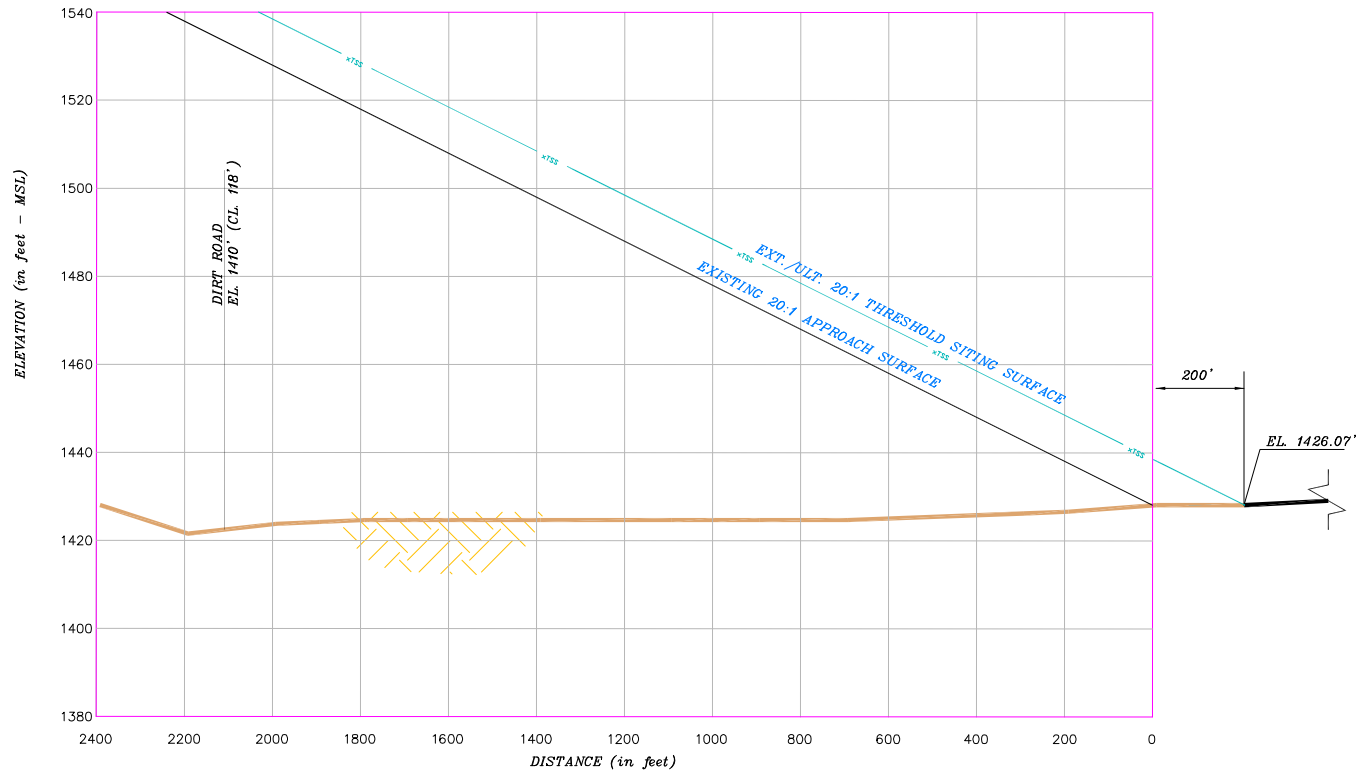
PLANNED BY: Eric Pfeifer
DETAILED BY: Maggie Beaver
APPROVED BY: James M. Harris, P. E.

July 9, 2010 SHEET 3 OF 8

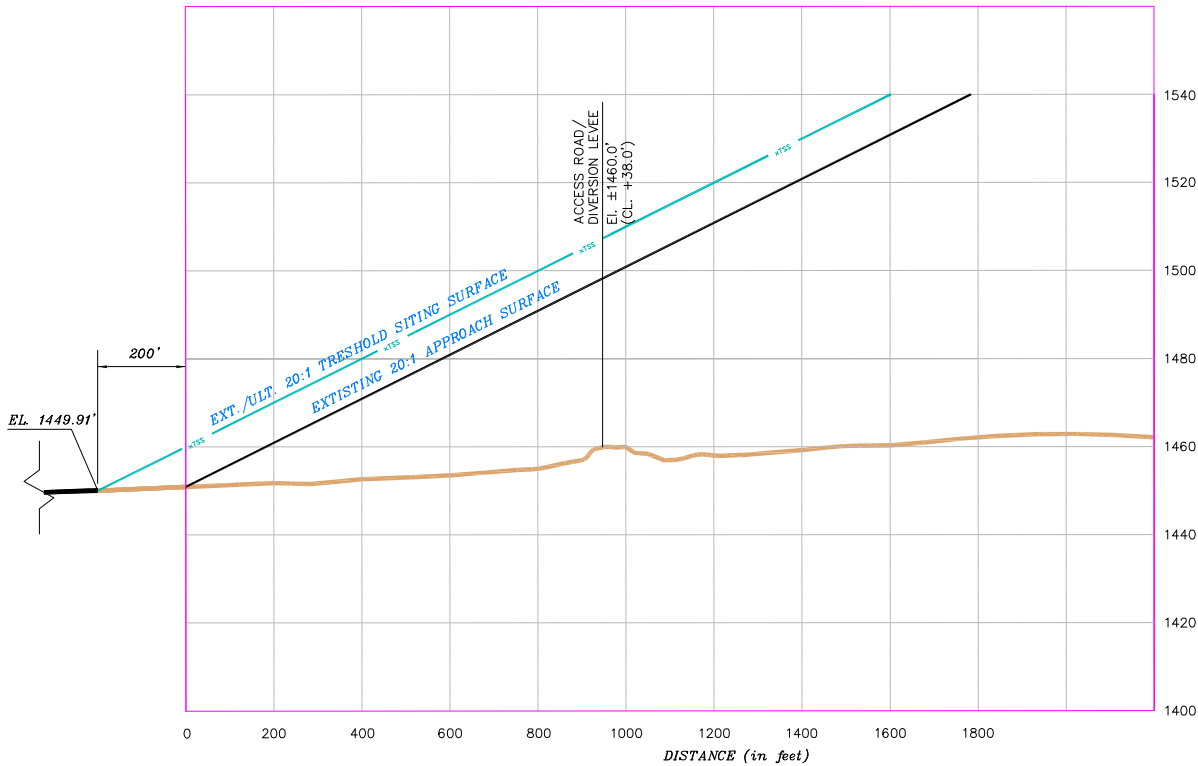
Coffman Associates
Airport Consultants
www.coffmanassociates.com



RUNWAY 12

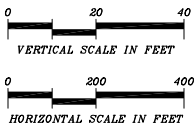


RUNWAY 30



OBSTRUCTION TABLE

Object Description	Object Elevation	Obstructed Part 77 Surface	Surface Elevation	Object Penetration	Proposed Object Disposition
1. NONE	NONE	NONE	NONE	NONE	--
2. NONE	NONE	NONE	NONE	NONE	--
--	--	--	--	--	--
--	--	--	--	--	--



No.	REVISIONS	DATE	BY	APP'D.
1	ALP UPDATE	08-31-09	CA	EP

THE PREPARATION OF THESE DOCUMENTS WAS FINANCED IN PART THROUGH A PLANNING GRANT FROM THE FEDERAL AVIATION ADMINISTRATION AS PROVIDED UNDER SECTION 505 OF THE AIRPORT AND AIRWAY IMPROVEMENT ACT OF 1982, AS AMENDED. THE CONTENTS DO NOT NECESSARILY REFLECT THE OFFICIAL VIEWS OR POLICY OF THE FAA. ACCEPTANCE OF THESE DOCUMENTS BY THE FAA DOES NOT IN ANY WAY CONSTITUTE A COMMITMENT ON THE PART OF THE UNITED STATES TO PARTICIPATE IN ANY DEVELOPMENT DEPICTED HEREIN NOR DOES IT INDICATE THAT THE PROPOSED DEVELOPMENT IS ENVIRONMENTALLY ACCEPTABLE IN ACCORDANCE WITH APPROPRIATE PUBLIC LAWS.

ERIC MARCUS MUNICIPAL AIRPORT
INNER PORTION OF THE
RUNWAY 12-30 APPROACH
SURFACE DRAWING
AJO, ARIZONA

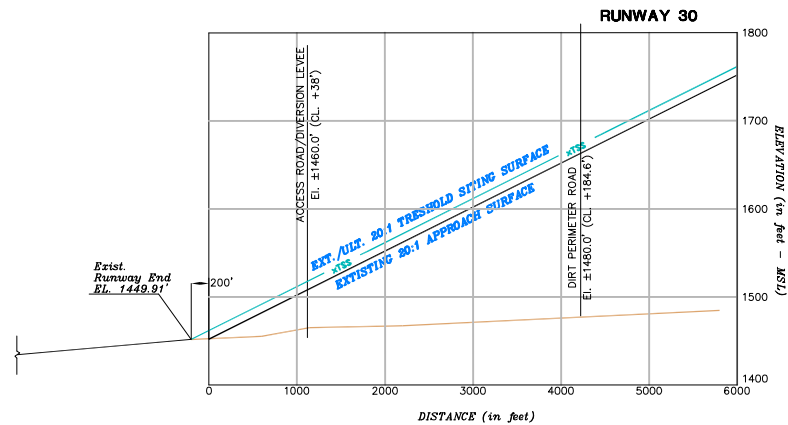
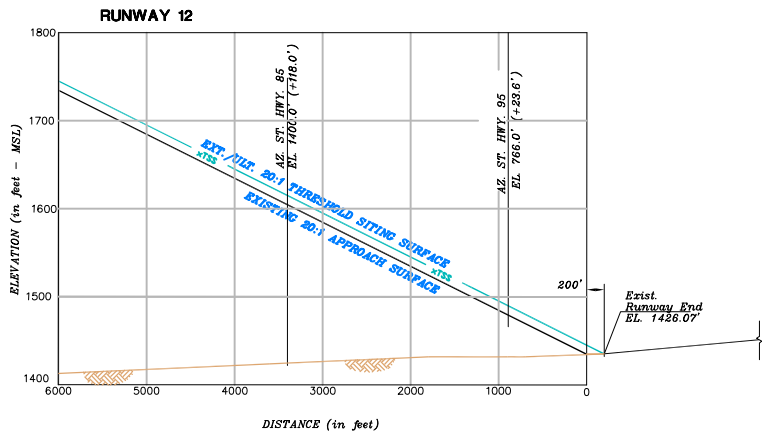
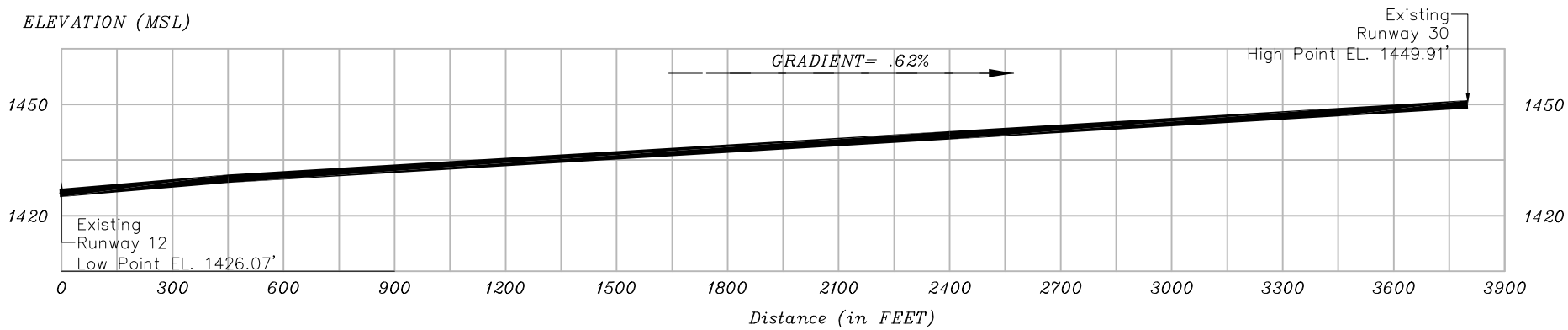
PLANNED BY: Eric Pfeifer
DETAILED BY: Maggie Beaver
APPROVED BY: James M. Harris, P. E.
July 9, 2010

SHEET 4 OF 8

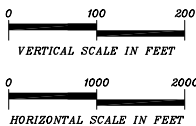
Coffman Associates
Airport Consultants
www.coffmanassociates.com

Coffman Associates 3:\CADD\AUP\2009\AJO AJO OUTER 7 9 10.dwg Printed Date 8-17-10 09:50:09 AM Margaret Beaver

EXISTING RUNWAY 12-30 PROFILE



OBSTRUCTION TABLE					
Object Description	Object Elevation	Obstructed Part 77 Surface	Surface Elevation	Object Penetration	Proposed Object Disposition
1. NONE	NONE	NONE	NONE	NONE	NONE
2. NONE	NONE	NONE	NONE	NONE	NONE
---	---	---	---	---	---



No.	REVISIONS	DATE	BY	APP'D.
1	ALP UPDATE	08-31-09	CA	EP

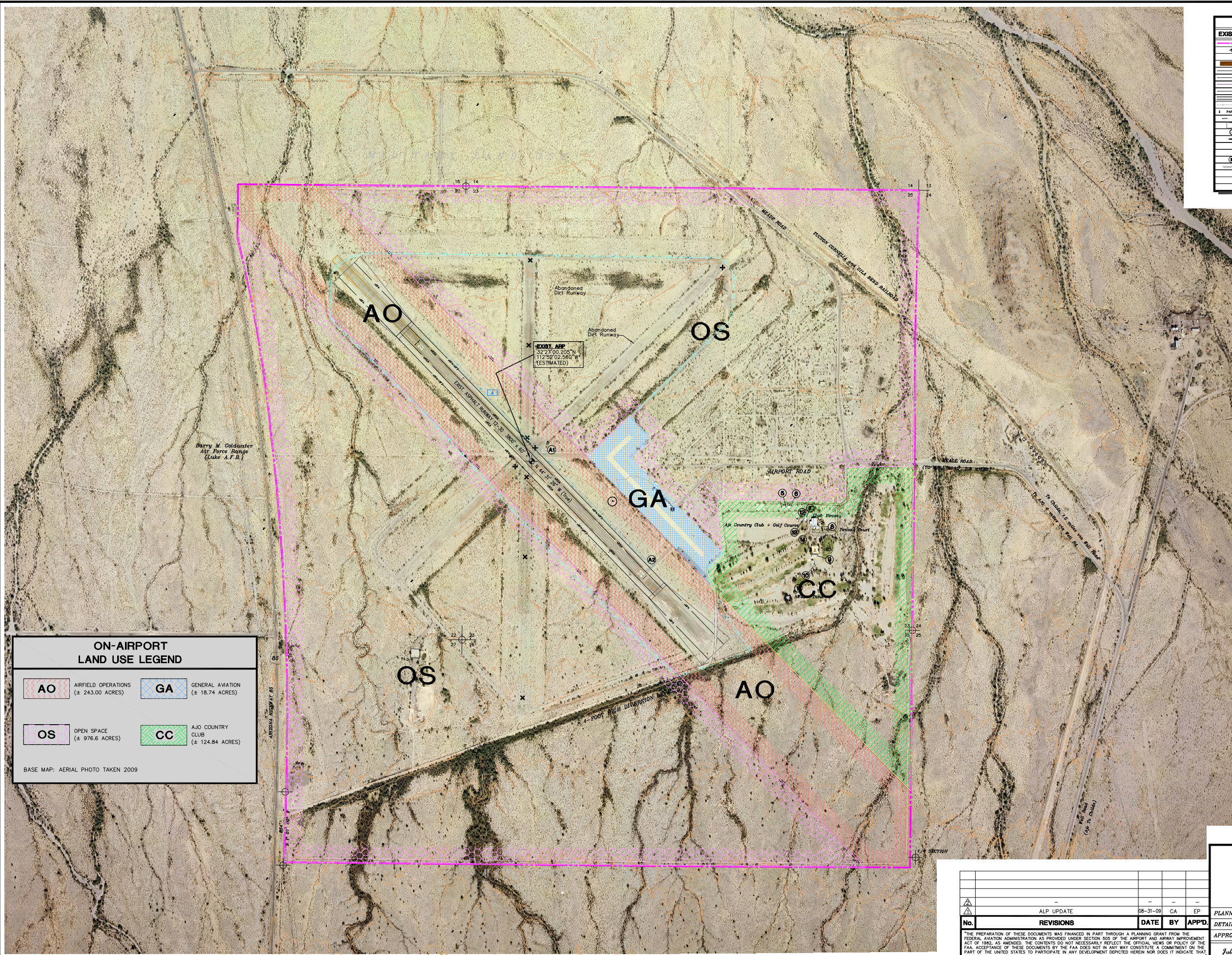
THE PREPARATION OF THESE DOCUMENTS WAS FINANCED IN PART THROUGH A PLANNING GRANT FROM THE FEDERAL AVIATION ADMINISTRATION AS PROVIDED UNDER SECTION 505 OF THE AIRPORT AND AIRWAY IMPROVEMENT ACT OF 1982, AS AMENDED. THE CONTENTS DO NOT NECESSARILY REFLECT THE OFFICIAL VIEWS OR POLICY OF THE FAA. ACCEPTANCE OF THESE DOCUMENTS BY THE FAA DOES NOT IN ANY WAY CONSTITUTE A COMMITMENT ON THE PART OF THE UNITED STATES TO PARTICIPATE IN ANY DEVELOPMENT DEPICTED HEREIN NOR DOES IT INDICATE THAT THE PROPOSED DEVELOPMENT IS ENVIRONMENTALLY ACCEPTABLE IN ACCORDANCE WITH APPROPRIATE PUBLIC LAWS.

ERIC MARCUS MUNICIPAL AIRPORT
RUNWAY 12-30 PROFILE &
OUTER APPROACH SURFACE
PROFILE DRAWING
AJO, ARIZONA





PLANNED BY: Eric Pfeifer
DETAILED BY: Maggie Beaver
APPROVED BY: James M. Harris, P. E.

July 9, 2010 SHEET 5 OF 8

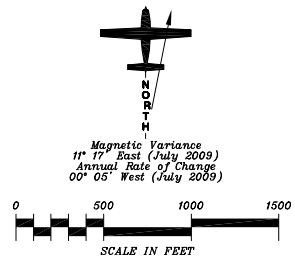
Coffman Associates
Airport Consultants
www.coffmanassociates.com



LEGEND		
EXISTING	ULTIMATE	DESCRIPTION
		AIRPORT PROPERTY LINE
		AIRPORT REFERENCE POINT (ARP)
		AIRPORT ROTATING BEACON
		BUILDING AND FACILITIES
		BUILDING RESTRICTION LINE (BRL)
		OBJECT FREE AREA (OFA)
		RUNWAY SAFETY AREA (RSA)
		OBSTACLE FREE ZONE (OFZ)
		FACILITY CONSTRUCTION
		FENCING
		NAVIGATIONAL AID INSTALLATION
		RUNWAY THRESHOLD LIGHTS
		RUNWAY PROTECTION ZONE (RPZ)
		SEGMENTED CIRCLE/LIGHTED WINDCONE
		WIND INDICATOR (Lighted)
		TOPOGRAPHIC CONTOURS
		SECTION CORNER
		TAXIWAY DESIGNATION
		HOLD POSITION MARKINGS
		CLOSED OR ABANDONED TAXIWAY/RUNWAY

ON-AIRPORT LAND USE LEGEND					
	AO	AIRFIELD OPERATIONS (± 243.00 ACRES)		GA	GENERAL AVIATION (± 18.74 ACRES)
	OS	OPEN SPACE (± 976.6 ACRES)		CC	AJO COUNTRY CLUB (± 124.84 ACRES)

BASE MAP: AERIAL PHOTO TAKEN 2009



No.	REVISIONS	DATE	BY	APP'D.
1	ALP UPDATE	08-31-09	CA	EP

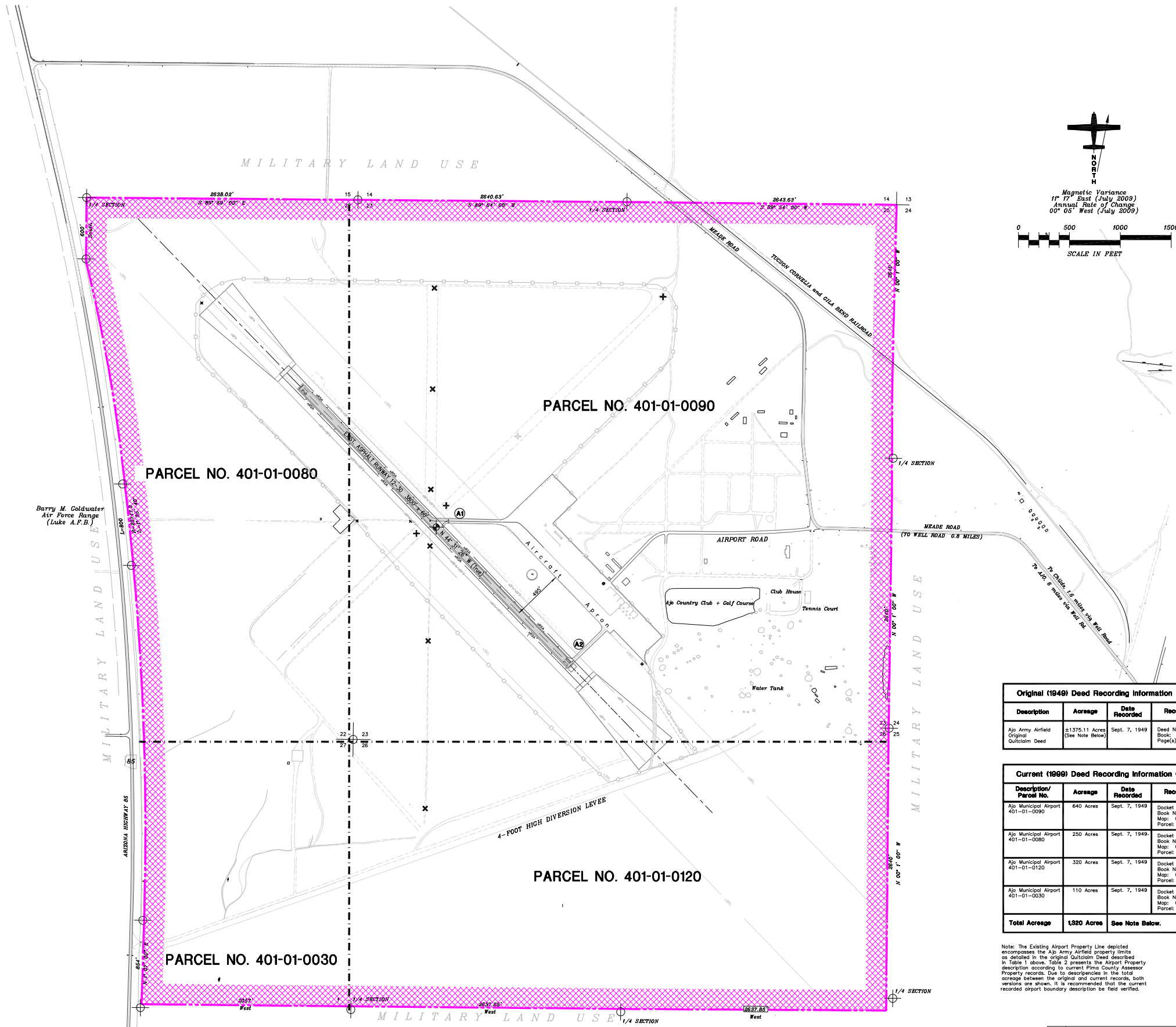
"THE PREPARATION OF THESE DOCUMENTS WAS FINANCED IN PART THROUGH A PLANNING GRANT FROM THE FEDERAL AVIATION ADMINISTRATION AS PROVIDED UNDER SECTION 505 OF THE AIRPORT AND AIRWAY IMPROVEMENT ACT OF 1982, AS AMENDED. THE CONTENTS DO NOT NECESSARILY REFLECT THE OFFICIAL VIEW OR POLICY OF THE FAA. ACCEPTANCE OF THESE DOCUMENTS BY THE FAA DOES NOT IN ANY WAY CONSTITUTE A COMMITMENT ON THE PART OF THE UNITED STATES TO PARTICIPATE IN ANY DEVELOPMENT DEPICTED HEREIN NOR DOES IT INDICATE THAT THE PROPOSED DEVELOPMENT IS ENVIRONMENTALLY ACCEPTABLE IN ACCORDANCE WITH APPROPRIATE PUBLIC LAWS."

ERIC MARCUS MUNICIPAL AIRPORT
ON-AIRPORT LAND USE
DRAWING
AJO, ARIZONA

PLANNED BY: Eric Pfeifer
DETAILED BY: Maggie Beaver
APPROVED BY: James M. Harris, P. E.
July 9, 2010

SHEET 7 OF 8

Coffman Associates
Airport Consultants
www.coffmanassociates.com



LEGEND		DESCRIPTION
EXISTING	ULTIMATE	
+	+	AIRPORT PROPERTY LINE
+	+	AIRPORT REFERENCE POINT (ARP)
+	+	AIRPORT ROTATING BEACON
+	+	BUILDING AND FACILITIES
+	+	BUILDING RESTRICTION LINE (BRL)
+	+	OBJECT FREE AREA (OFA)
+	+	RUNWAY SAFETY AREA (RSA)
+	+	OBSTACLE FREE ZONE (OFZ)
+	+	FACILITY CONSTRUCTION
+	+	FENCING
+	+	NAVIGATIONAL AID INSTALLATION
+	+	RUNWAY THRESHOLD LIGHTS
+	+	RUNWAY PROTECTION ZONE (RPZ)
+	+	SEGMENTED CIRCLE/LIGHTED WINDCONE
+	+	WIND INDICATOR (Lighted)
+	+	TOPOGRAPHIC CONTOURS
+	+	SECTION CORNER
+	+	TAXIWAY DESIGNATION
+	+	HOLD POSITION MARKINGS
+	+	CLOSED OR ABANDONED TAXIWAY/RUNWAY

KEY:

EXISTING AIRPORT PROPERTY
(ORIGINAL OUTCLAIM DEED)

PARCEL BOUNDARY

Original (1949) Deed Recording Information (County Recorder - Pima County, AZ)				
Description	Acreage	Date Recorded	Recording Information	Grantor
Ajo Army Airfield Original Outclaim Deed	±1375.11 Acres (See Note Below)	Sept. 7, 1949	Deed No. 27482 Book: 194 Page(s): 144 - 152	United States of America General Services Administration War Assets

Current (1999) Deed Recording Information (County Assessor - Pima County, AZ)				
Description/Parcel No.	Acreage	Date Recorded	Recording Information	Grantor
Ajo Municipal Airport 401-01-0090	640 Acres	Sept. 7, 1949	Docket No.: 194 Page: 144 Book No.: 401 Map: 01 Parcel: 0090	United States of America General Services Administration War Assets
Ajo Municipal Airport 401-01-0080	250 Acres	Sept. 7, 1949	Docket No.: 194 Page: 144 Book No.: 401 Map: 01 Parcel: 0080	United States of America General Services Administration War Assets
Ajo Municipal Airport 401-01-0120	320 Acres	Sept. 7, 1949	Docket No.: 194 Page: 144 Book No.: 401 Map: 01 Parcel: 0120	United States of America General Services Administration War Assets
Ajo Municipal Airport 401-01-0030	110 Acres	Sept. 7, 1949	Docket No.: 194 Page: 144 Book No.: 401 Map: 01 Parcel: 0030	United States of America General Services Administration War Assets
Total Acreage	1,320 Acres	See Note Below.		

Note: The Existing Airport Property Line depicted encompasses the Ajo Army Airfield property limits as detailed in the original Outclaim Deed described in Table 1 above. Table 2 presents the Airport Property description according to current Pima County Assessor Property records. Due to discrepancies in the total acreage between the original and current records, both versions are shown. It is recommended that the current recorded airport boundary description be field verified.

No.	REVISIONS	DATE	BY	APP'D.
1	ALP UPDATE	08-31-09	CA	EP

"THE PREPARATION OF THESE DOCUMENTS WAS FINANCED IN PART THROUGH A PLANNING GRANT FROM THE FEDERAL AVIATION ADMINISTRATION AS PROVIDED UNDER SECTION 505 OF THE AIRPORT AND AIRWAY IMPROVEMENT ACT OF 1982, AS AMENDED. THE CONTENTS DO NOT NECESSARILY REFLECT THE OFFICIAL VIEWS OR POLICY OF THE FAA. ACCEPTANCE OF THESE DOCUMENTS BY THE FAA DOES NOT IN ANY WAY CONSTITUTE A COMMITMENT ON THE PART OF THE UNITED STATES TO PARTICIPATE IN ANY DEVELOPMENT DEPICTED HEREIN NOR DOES IT INDICATE THAT THE PROPOSED DEVELOPMENT IS ENVIRONMENTALLY ACCEPTABLE IN ACCORDANCE WITH APPROPRIATE PUBLIC LAWS."

ERIC MARCUS MUNICIPAL AIRPORT
EXHIBIT "A"
AIRPORT PROPERTY MAP
AJO, ARIZONA

PLANNED BY: Eric Pfeifer
DETAILED BY: Maggie Beaver
APPROVED BY: James M. Harris, P. E.
July 9, 2010

SHEET 8 OF 8

Coffman Associates
Airport Consultants
www.coffmanassociates.com