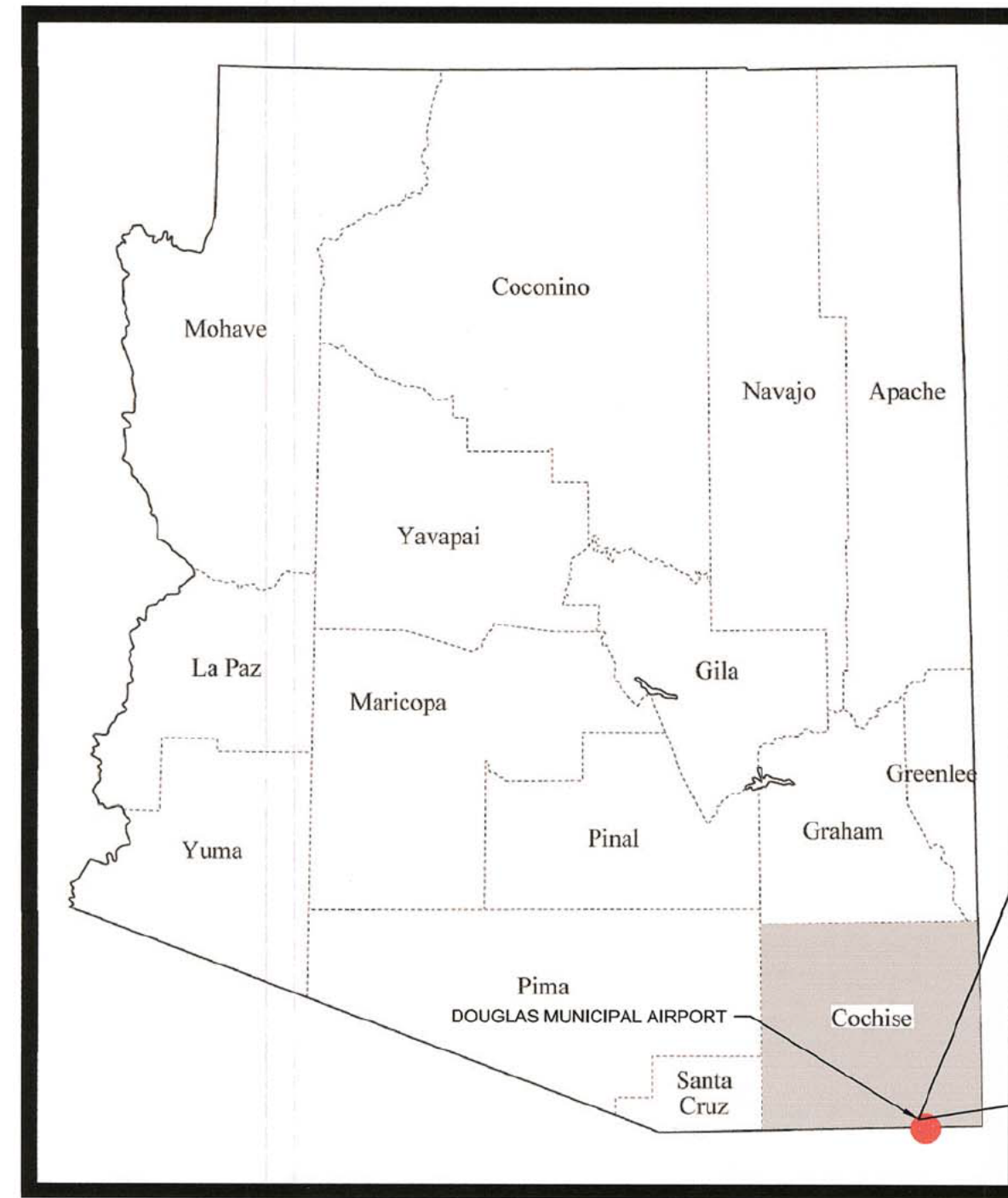


DOUGLAS MUNICIPAL AIRPORT

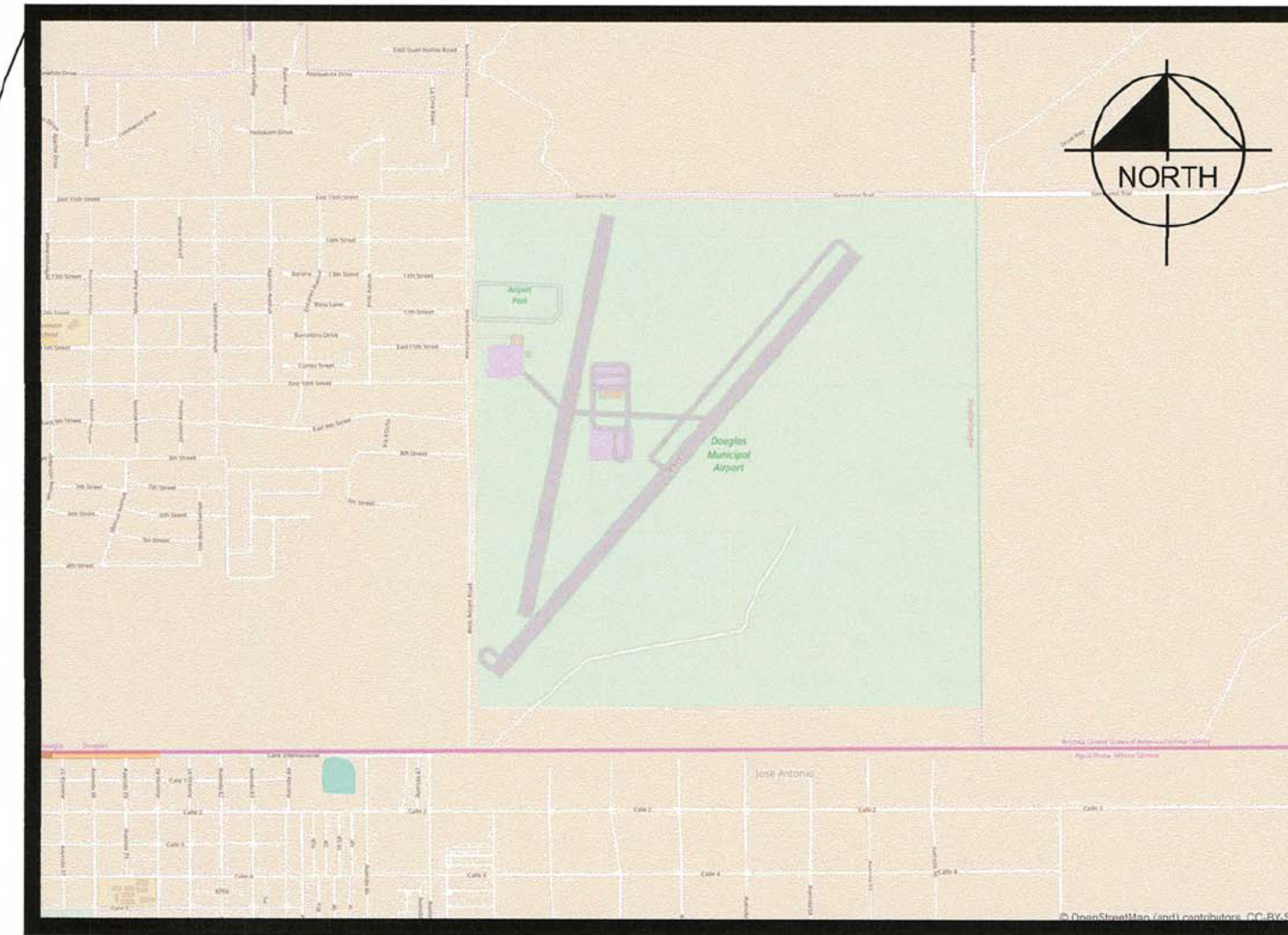
AIRPORT LAYOUT PLAN DRAWINGS

COCHISE COUNTY, ARIZONA

NOVEMBER 2017



STATE MAP
(Not to Scale)



MAP SOURCE: OPEN STREET MAP, © OpenStreetMap (and) contributors, CC-BY-SA

VICINITY MAP
(Not to Scale)

ADOT
Multimodal Planning

This Airport Layout Plan has been reviewed by ADOT MFD Aeronautics staff and is approved.

Donald J. Koz
Donald J. Koz, P.E., State Airport Engineer

12/12/17
Date

The contents of this plan do not necessarily reflect the official views or policy of ADOT Aeronautics Group. Acceptance of these documents by ADOT Aeronautics does not in any way constitute a commitment on the part of the State of Arizona to participate in any development depicted herein nor does it indicate that the proposed development is environmentally acceptable in accordance with applicable public or state laws.

CITY OF DOUGLAS APPROVAL

RECOMMENDED BY: DATE:

Lynn Keifchner 11/13/17
Lynn Keifchner
Airport Engineer

Luis Pedroza 11/13/17
Luis Pedroza
Finance Director

SHEET INDEX

No.	SHEET TITLE
1	COVER SHEET
2	AIRPORT LAYOUT PLAN
3	DATA SHEET
4	TERMINAL AREA PLAN
5	EXISTING AIRSPACE DRAWING
6	ULTIMATE AIRSPACE DRAWING
7	INNER PORTION OF THE APPROACH - RW 03-21
8	INNER PORTION OF THE APPROACH - RW 12-30
9	AIRPORT LAND USE MAP
10	AIRPORT PROPERTY MAP

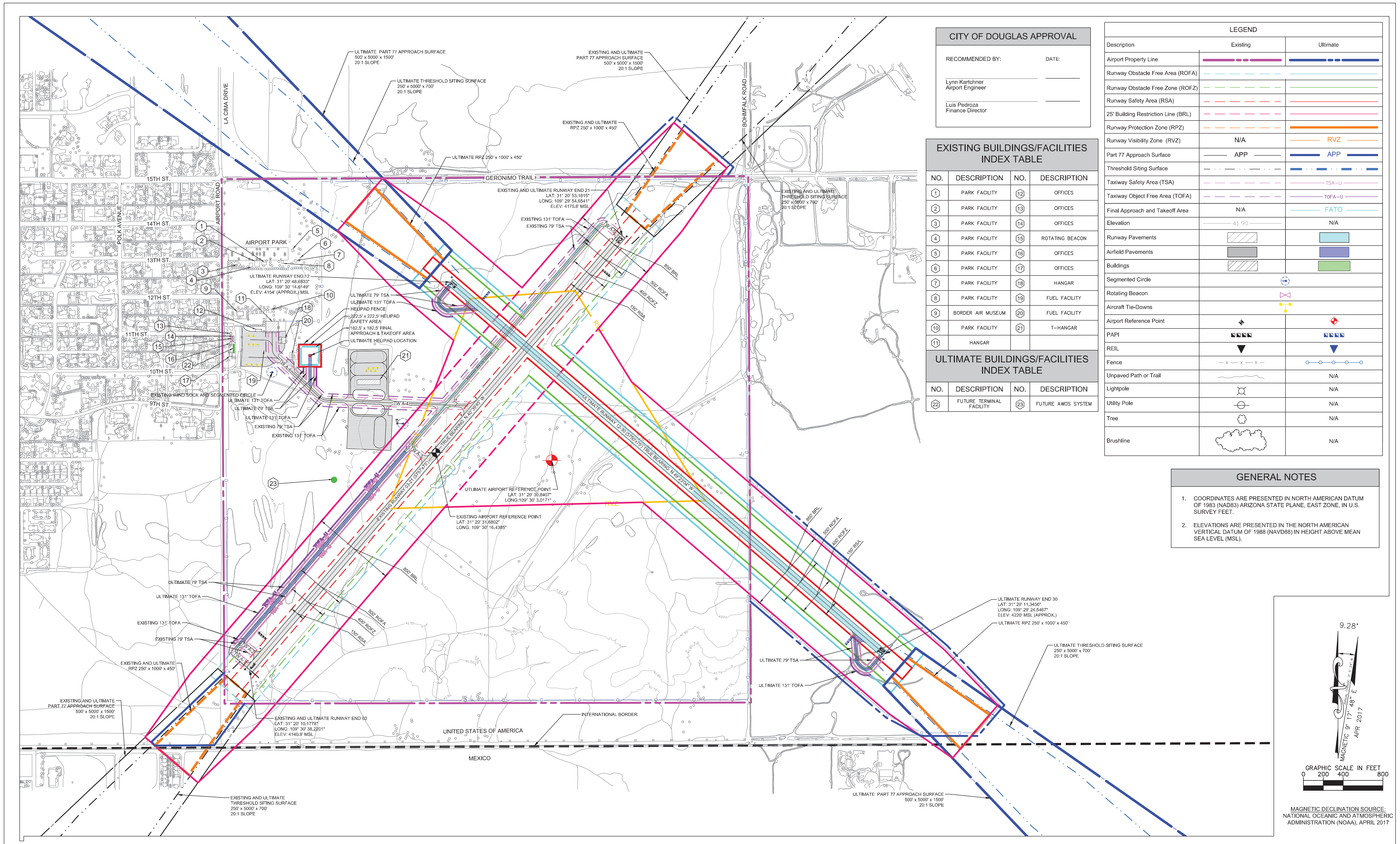
REVISIONS	BY	APPROVED	DATE

CITY OF DOUGLAS
425 E. 10TH ST, DOUGLAS, AZ, 85607

Kimley»Horn
1001 W. Southern Avenue Suite 131
Mesa, AZ 85210
www.kimley-horn.com

AIRPORT LAYOUT PLAN
COVER SHEET
SHEET 1 OF 10 SHEETS

K:\NVA_Aviation\Douglas (DGL)\CAD\PlanSheets\1 COVER SHEET.dwg Nov 30, 2017 Tommy Cook XREFS: XREFORDER_1-0982439003 XLEBEND



CITY OF DOUGLAS APPROVAL

RECOMMENDED BY: _____ DATE: _____

Lynn Karchner
Airport Engineer

Luis Pedroza
Finance Director

EXISTING BUILDINGS/FACILITIES INDEX TABLE

NO.	DESCRIPTION	NO.	DESCRIPTION
1	PARK FACILITY	12	OFFICES
2	PARK FACILITY	13	OFFICES
3	PARK FACILITY	14	OFFICES
4	PARK FACILITY	15	ROTATING BEACON
5	PARK FACILITY	16	OFFICES
6	PARK FACILITY	17	OFFICES
7	PARK FACILITY	18	HANGAR
8	PARK FACILITY	19	FUEL FACILITY
9	BORDER AIR MUSEUM	20	FUEL FACILITY
10	PARK FACILITY	21	T-HANGAR
11	HANGAR		

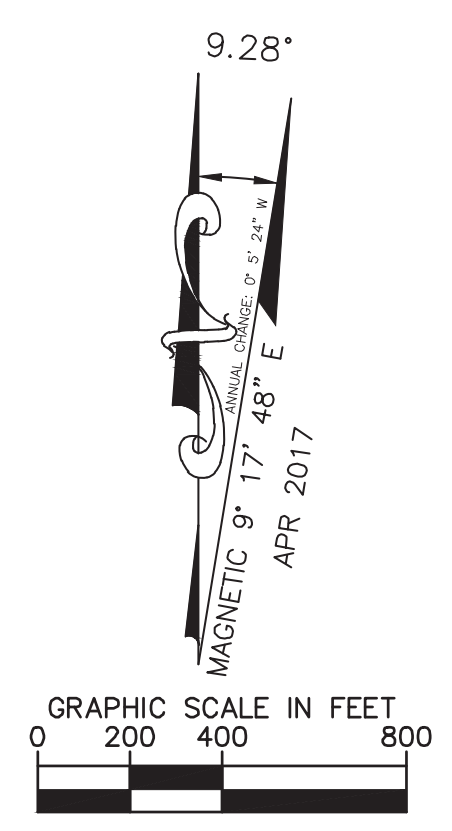
ULTIMATE BUILDINGS/FACILITIES INDEX TABLE

NO.	DESCRIPTION	NO.	DESCRIPTION
22	FUTURE TERMINAL FACILITY	23	FUTURE AWOS SYSTEM

Description	LEGEND	
	Existing	Ultimate
Airport Property Line		
Runway Obstacle Free Area (ROFA)		
Runway Obstacle Free Zone (ROFZ)		
Runway Safety Area (RSA)		
25' Building Restriction Line (BRL)		
Runway Protection Zone (RPZ)		
Runway Visibility Zone (RVZ)	N/A	
Part 77 Approach Surface		
Threshold Siting Surface		
Taxiway Safety Area (TSA)		
Taxiway Object Free Area (TOFA)		
Final Approach and Takeoff Area	N/A	
Elevation	41.90	N/A
Runway Pavements		
Airfield Pavements		
Buildings		
Segmented Circle		
Rotating Beacon		
Aircraft Tie-Downs		
Airport Reference Point		
PAPI		
REIL		
Fence		
Unpaved Path or Trail		N/A
Lightpole		N/A
Utility Pole		N/A
Tree		N/A
Brushline		N/A

GENERAL NOTES

- COORDINATES ARE PRESENTED IN NORTH AMERICAN DATUM OF 1983 (NAD83) ARIZONA STATE PLANE, EAST ZONE, IN U.S. SURVEY FEET.
- ELEVATIONS ARE PRESENTED IN THE NORTH AMERICAN VERTICAL DATUM OF 1988 (NAVD88) IN HEIGHT ABOVE MEAN SEA LEVEL (MSL).



MAGNETIC DECLINATION SOURCE: NATIONAL OCEANIC AND ATMOSPHERIC ADMINISTRATION (NOAA), APRIL 2017

CITY OF DOUGLAS
425 E. 10TH ST, DOUGLAS, TOMBSTONE, AZ, 85607

Kimley»Horn
1001 W. Southern Avenue Suite 131
Mesa, AZ 85210
www.kimley-horn.com

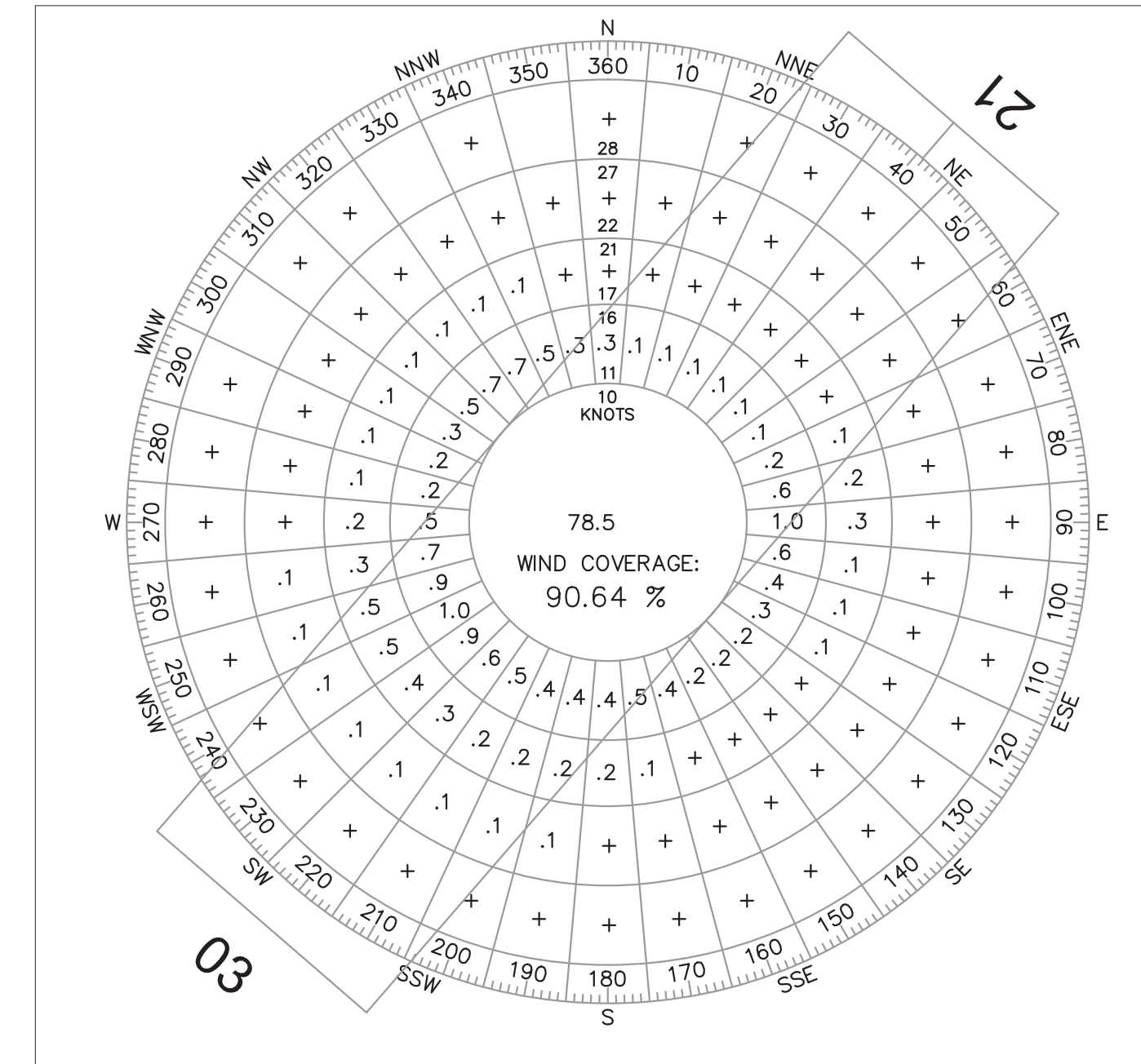
REVISIONS	BY	APPROVED	DATE

DOUGLAS MUNICIPAL AIRPORT
AIRPORT LAYOUT PLAN DRAWINGS
AIRPORT LAYOUT PLAN

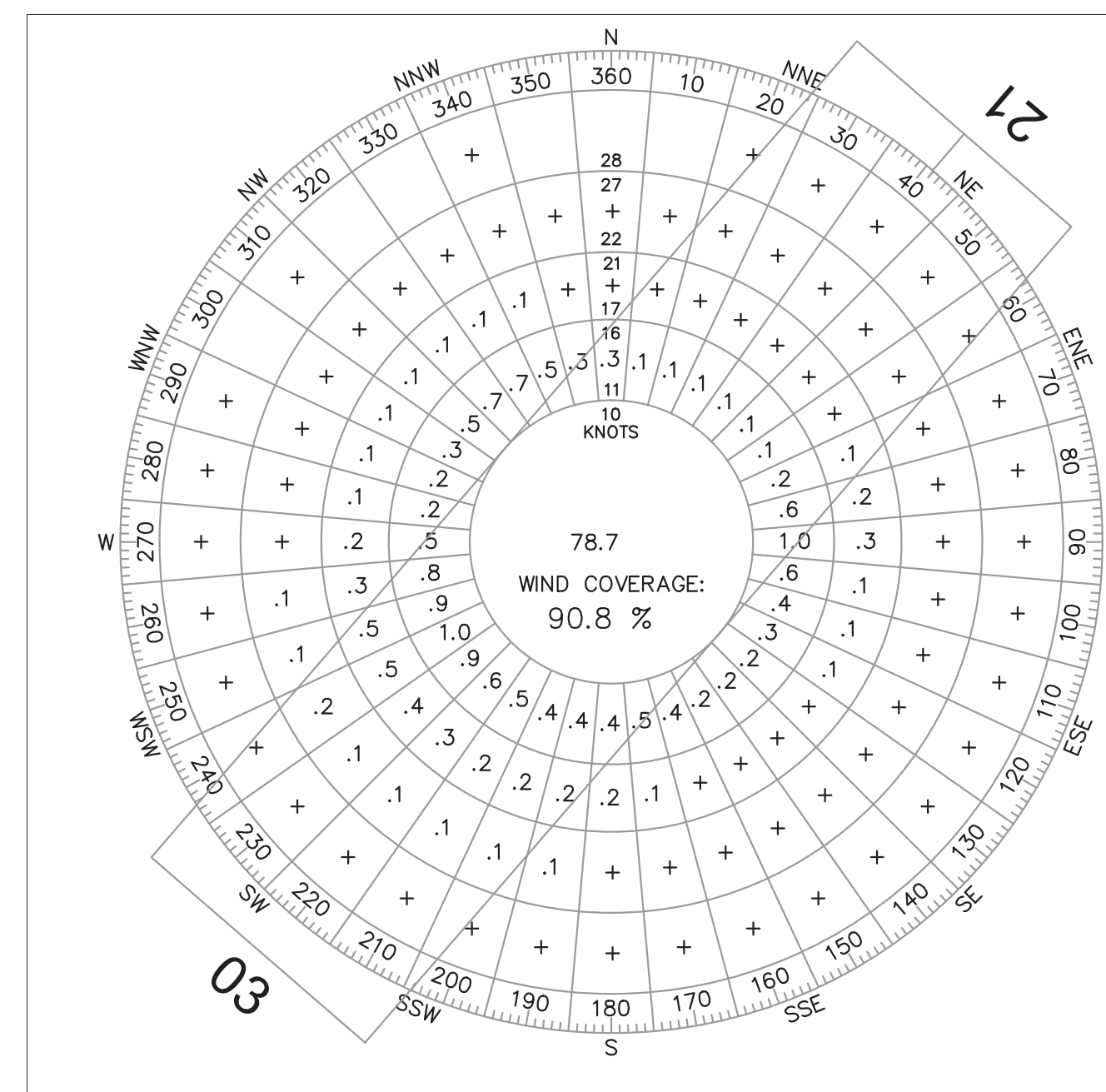
SCALE: HOR. 1"=400' VERT. N/A
SHEET 2 OF 10 SHEETS

RUNWAY DATA			
ITEM		RW 03-21 (EX.)	RW 12-30 (ULT.)
APPROACH REFERENCE CODE		B/II/VS	
DESIGN AIRCRAFT	CRITICAL AIRCRAFT	BEECHCRAFT SUPER KING AIR 200	
	APPROACH SPEED (KNOTS)	103	
	WINGSPAN/LENGTH	54' 6"	
	MAX. CERTIFIED TAKEOFF WEIGHT (LBS.)	12,500	
APPROACH MINIMUMS		VISUAL	
APPROACH TYPE		VISUAL	
FAR PART 77 APPROACH SLOPE		20:1	
RUNWAY PROTECTION ZONES (RPZ)	LENGTH	1000'	
	INNER WIDTH	250'	
	OUTER WIDTH	450'	
RUNWAY LENGTH		5757' (PUBLISHED)	5750'
RUNWAY WIDTH		75'	75'
RUNWAY PAVEMENT		ASPHALT	ASPHALT
PAVEMENT STRENGTH		12,500 lbs. SWG (Est.)	
RUNWAY LIGHTING		MIRL	MIRL
APPROACH LIGHTING		REIL	REIL
RUNWAY MARKINGS		BASIC, IN POOR CONDITION	TBD
% EFFECTIVE GRADIENT		0.6%	1.1%
VISUAL APPROACH AIDS		PAPI	PAPI
NAVIGATIONAL AIDS		WIND SOCK, SEGMENTED CIRCLE, ROTATING BEACON	AWOS, WIND SOCK, SEGMENTED CIRCLE, ROTATING BEACON
RUNWAY SAFETY AREA (RSA)	LENGTH BEYOND RUNWAY END	300'	
	WIDTH	150'	
RUNWAY OBJECT FREE AREA (ROFA)	LENGTH BEYOND RUNWAY END	300'	
	WIDTH	500'	
RUNWAY OBJECT FREE ZONE (ROFZ)	LENGTH BEYOND RUNWAY END	200'	
	WIDTH	400'	

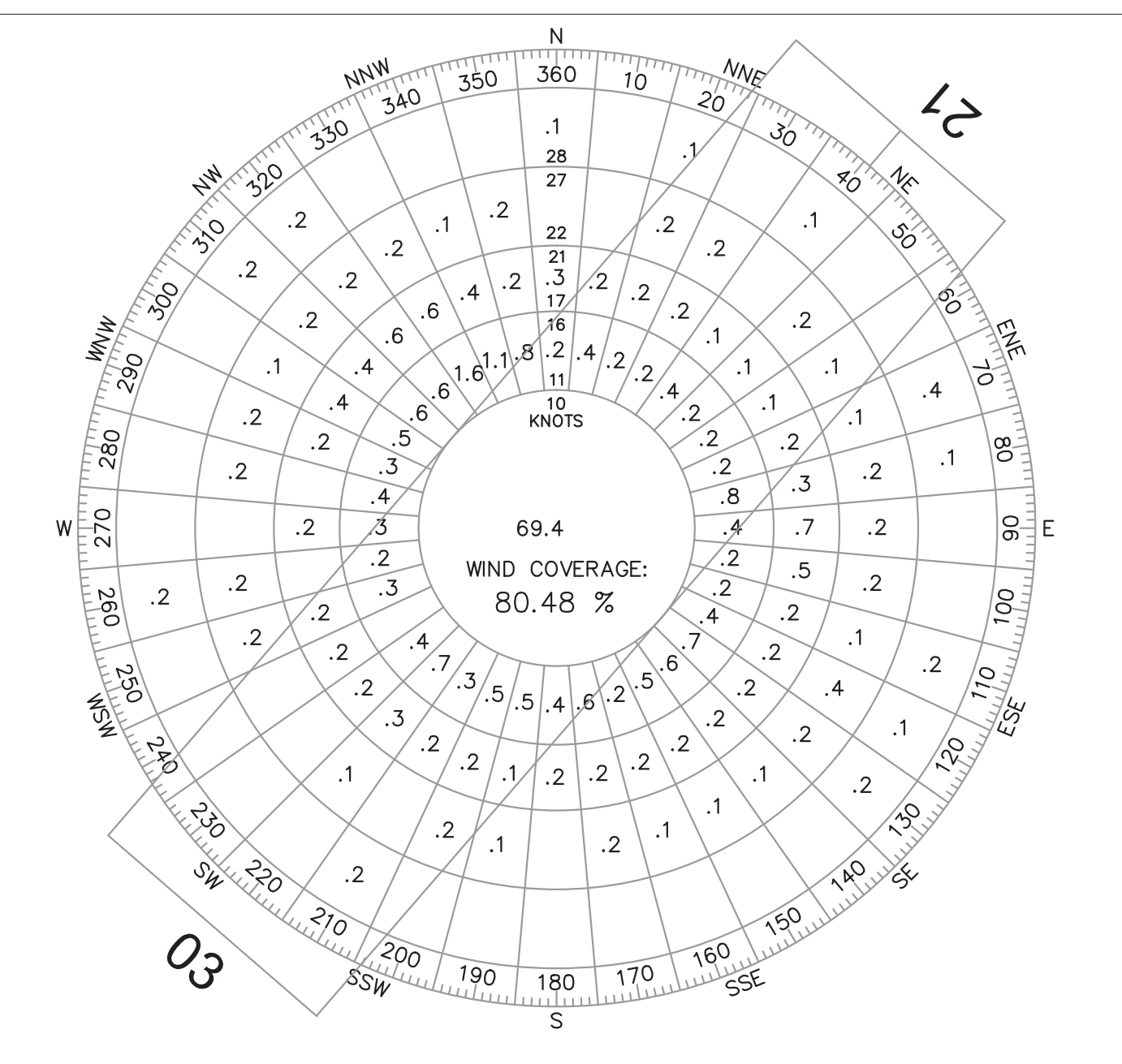
ALL-WEATHER WIND ROSE, 10.5 KNOTS



VFR WIND ROSE, 10.5 KNOTS



IFR WIND ROSE, 10.5 KNOTS



AIRPORT DATA			
ITEM		EXISTING	ULTIMATE
AIRPORT ELEVATION (NAVD88) (MSL)		4175.6'	4220' (APPROX.)*
AIRPORT REFERENCE POINT (ARP) COORDINATES (NAD83)	LATITUDE	31° 20' 31.6802"	31° 20' 30.8407"
	LONGITUDE	109° 30' 16.4385"	109° 30' 3.0171"
MEAN MAX. TEMP - HOTTEST MONTH (JUNE)		97°F	
AIRPORT REFERENCE CODE		B-II (SMALL)	B-II (SMALL)
NPIAS ROLE		NONE	
MAGNETIC VARIATION		09° 16' 48" E changing by 0.09° W per year	
AIRPORT & TERMINAL NAVAIDS	WIND SOCK, SEGMENTED CIRCLE, ROTATING BEACON, REILs, PAPIs	AWOS, WIND SOCK, SEGMENTED CIRCLE, ROTATING BEACON, REILs, PAPIs	

* - ULTIMATE AIRPORT ELEVATION REFLECTS APPROXIMATE EXISTING GROUND ELEVATION AT ULTIMATE RUNWAY END 30

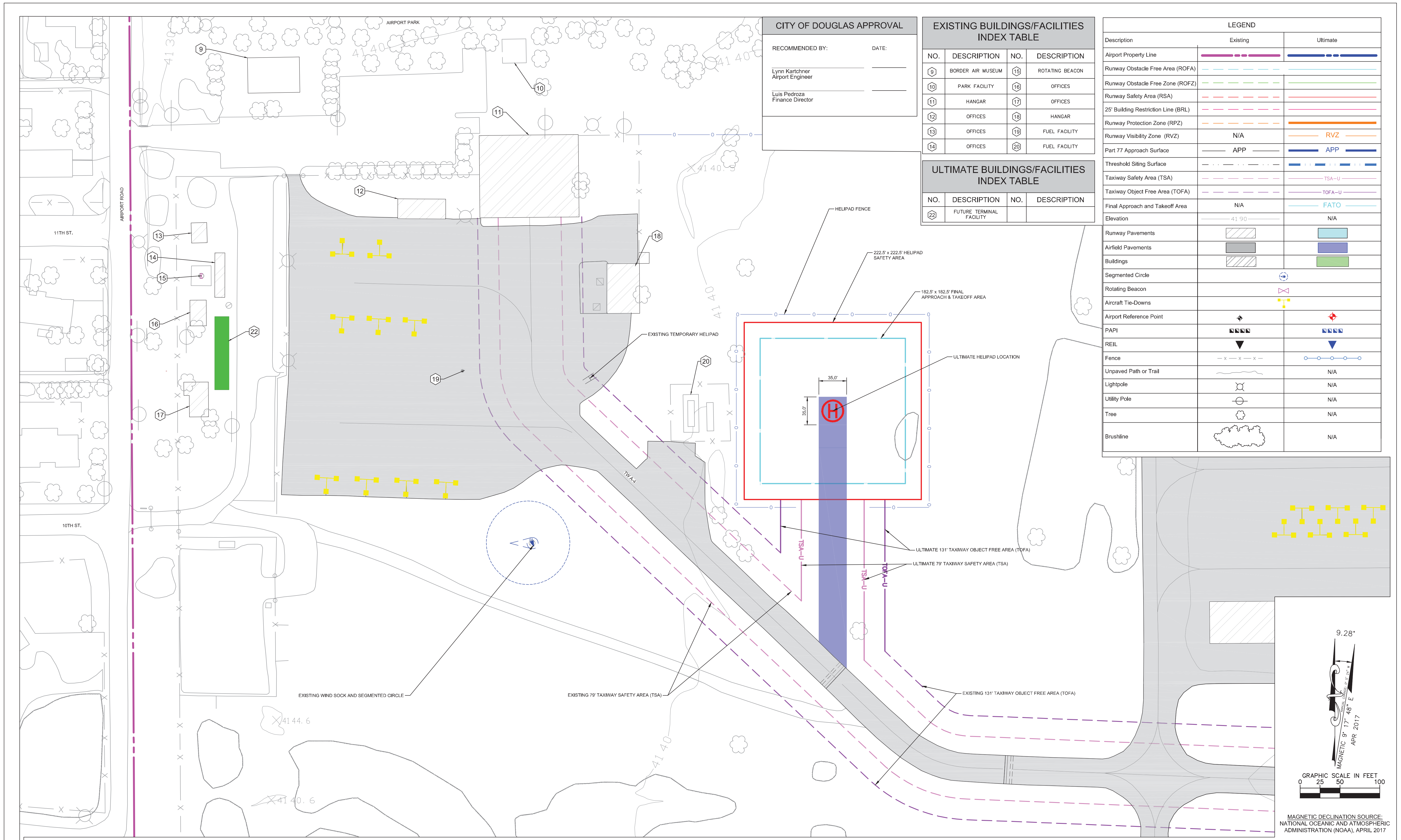
RUNWAY END COORDINATES AND ELEVATIONS				
RUNWAY		LATITUDE	LONGITUDE	ELEVATION (MSL)
RW 3	EXISTING & ULTIMATE	31° 20' 10.1778"	109° 30' 38.2201"	4140.9'
RW 21	EXISTING & ULTIMATE	31° 20' 53.1815"	109° 29' 54.6541"	4175.6'
RW 12	ULTIMATE	31° 20' 48.6533"	109° 30' 14.6149"	4154' (approx.)
RW 30	ULTIMATE	31° 20' 11.3456"	109° 29' 24.5467"	4220' (approx.)

CROSSWIND COVERAGE TABLE

	ALL WEATHER		VFR WIND COVERAGE		IFR WIND COVERAGE	
	10.5 KNOTS	13 KNOTS	10.5 KNOTS	13 KNOTS	10.5 KNOTS	13 KNOTS
EXISTING RUNWAY 3-21	90.6%	95.0%	90.8%	95.1%	80.5%	86.0%
ULTIMATE RUNWAY 12-30	88.7%	92.8%	88.7%	92.8%	86.6%	90.8%
ULTIMATE COMBINED	97.6%	99.3%	97.6%	99.3%	94.7%	97.4%

WIND DATA SOURCE: DUG (STATION #722730) YEARS 2007-2016 FAA AGIS WEBSITE
 HTTPS://AIRPORTS-GIS.FAA.GOV/WINDROSE, ACCESSED FEBRUARY 2017

REVISIONS	BY	APPROVED	DATE



CITY OF DOUGLAS APPROVAL

RECOMMENDED BY: _____ DATE: _____

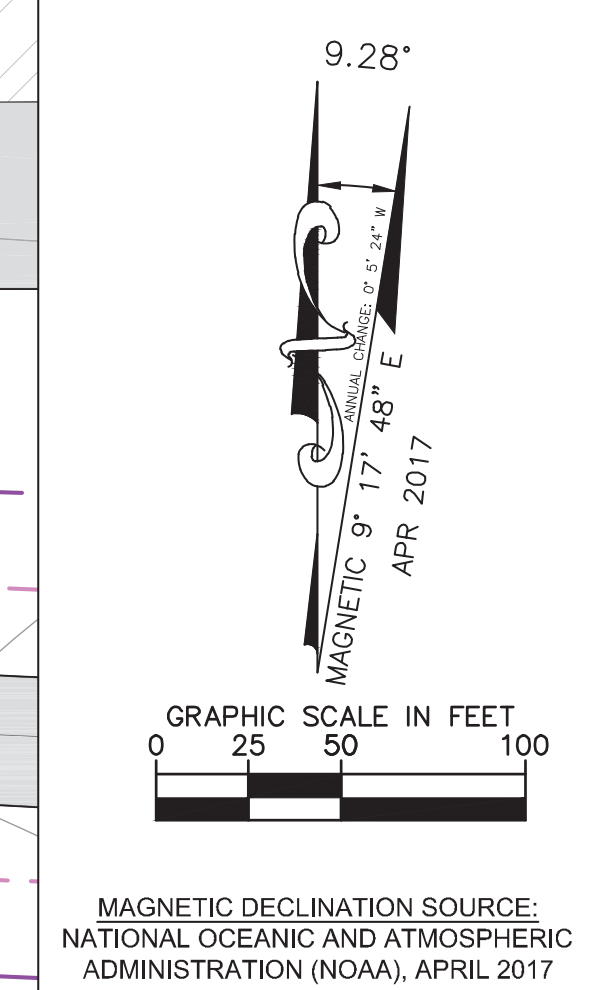
Lynn Kartzner
Airport Engineer

Luis Pedroza
Finance Director

EXISTING BUILDINGS/FACILITIES INDEX TABLE			
NO.	DESCRIPTION	NO.	DESCRIPTION
9	BORDER AIR MUSEUM	15	ROTATING BEACON
10	PARK FACILITY	16	OFFICES
11	HANGAR	17	OFFICES
12	OFFICES	18	HANGAR
13	OFFICES	19	FUEL FACILITY
14	OFFICES	20	FUEL FACILITY

ULTIMATE BUILDINGS/FACILITIES INDEX TABLE			
NO.	DESCRIPTION	NO.	DESCRIPTION
22	FUTURE TERMINAL FACILITY		

Description	LEGEND	
	Existing	Ultimate
Airport Property Line		
Runway Obstacle Free Area (ROFA)		
Runway Obstacle Free Zone (ROFZ)		
Runway Safety Area (RSA)		
25' Building Restriction Line (BRL)		
Runway Protection Zone (RPZ)		
Runway Visibility Zone (RVZ)	N/A	
Part 77 Approach Surface		
Threshold Siting Surface		
Taxiway Safety Area (TSA)		
Taxiway Object Free Area (TOFA)		
Final Approach and Takeoff Area	N/A	
Elevation	-41.90	N/A
Runway Pavements		
Airfield Pavements		
Buildings		
Segmented Circle		
Rotating Beacon		
Aircraft Tie-Downs		
Airport Reference Point		
PAPI		
REIL		
Fence		
Unpaved Path or Trail		N/A
Lightpole		N/A
Utility Pole		N/A
Tree		N/A
Brushline		N/A



CITY OF DOUGLAS
425 E. 10TH ST, DOUGLAS, TOMBSTONE, AZ, 85607

Kimley»Horn
1001 W. Southern Avenue Suite 131
Mesa, AZ 85210
www.kimley-horn.com

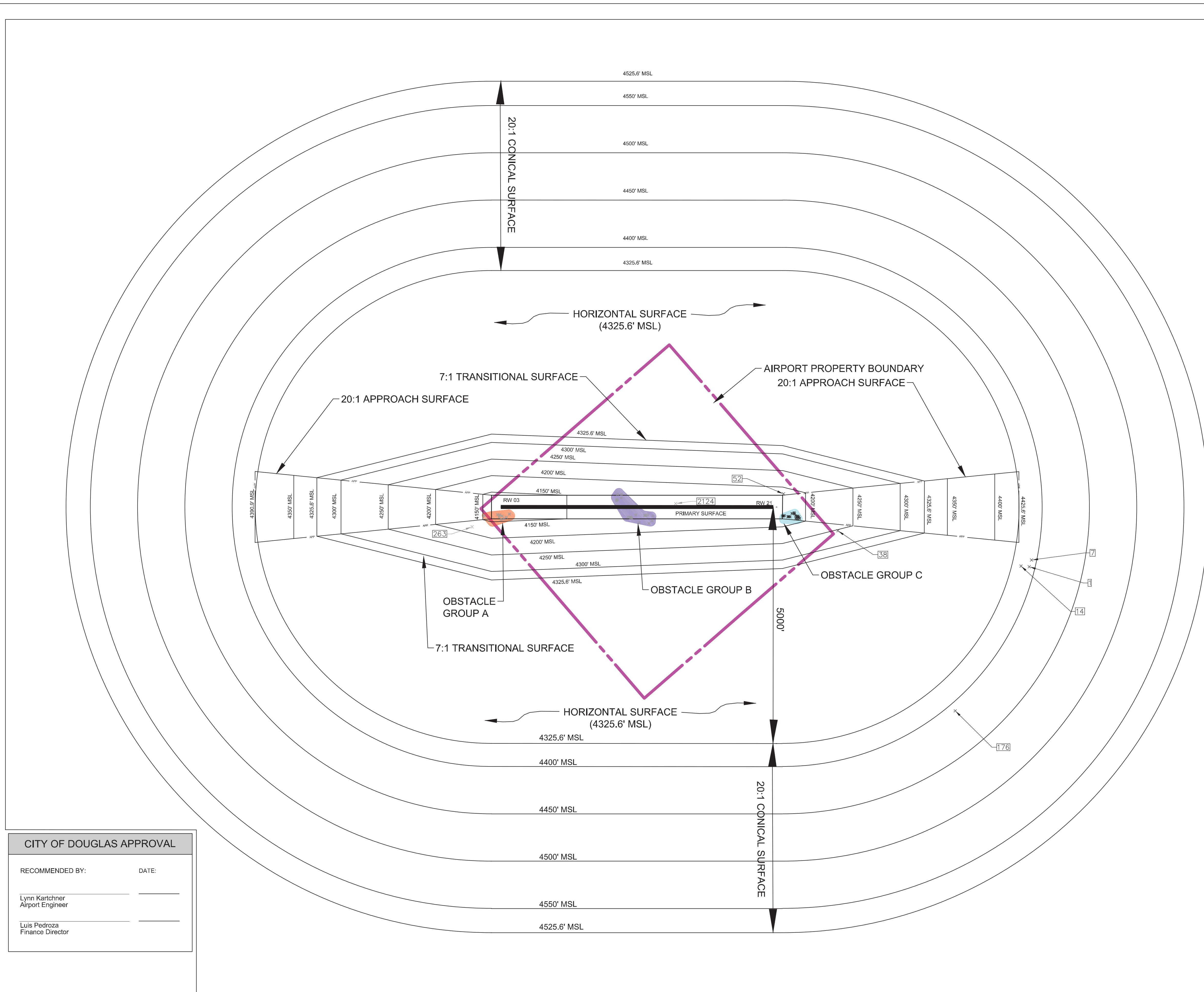
REVISIONS	BY	APPROVED	DATE

DOUGLAS MUNICIPAL AIRPORT
AIRPORT LAYOUT PLAN DRAWINGS
TERMINAL AREA PLAN

SCALE: HOR. 1"=50' VERT. N/A
SHEET 4 OF 11 SHEETS

PART 77 OBSTRUCTION DATA							
OID	Group	Description	Object Height (ft. MSL)	Penetrated Surface	Penetration	Disposition	FAA STUDYID#
1		GROUND	4365.7	CONICAL	21.6	NO ACTION	
7		GROUND	4363.0	CONICAL	18.0	NO ACTION	
14		GROUND	4344.8	CONICAL	9.3	NO ACTION	
38		TOWER	4258.8	TRANSITIONAL	5.4	MARK AND LIGHT	
52		BUSH	4183.5	TRANSITIONAL	3.2	REMOVE	
97	C	TREE	4195.0	APPROACH (RW 21)	3.4	REMOVE	
98	C	TREE	4201.9	APPROACH (RW 21)	11.0	REMOVE	
99	C	TREE	4192.8	APPROACH (RW 21)	3.3	REMOVE	
100	C	TREE	4196.5	APPROACH (RW 21)	4.9	REMOVE	
101	C	TREE	4193.6	APPROACH (RW 21)	0.8	REMOVE	
102	C	TREE	4192.9	APPROACH (RW 21)	3.2	REMOVE	
103	C	BUSH	4190.8	APPROACH (RW 21)	2.6	REMOVE	
104	C	BUSH	4189.7	APPROACH (RW 21)	1.9	REMOVE	
105	C	BUSH	4189.0	APPROACH (RW 21)	3.4	REMOVE	
106	C	BUSH	4193.8	APPROACH (RW 21)	0.3	REMOVE	
108	C	BUSH	4190.9	APPROACH (RW 21)	9.6	REMOVE	
109	C	BUSH	4190.0	APPROACH (RW 21)	7.9	REMOVE	
110	C	BUSH	4189.6	APPROACH (RW 21)	6.1	REMOVE	
111	C	BUSH	4189.0	APPROACH (RW 21)	11.5	REMOVE	
112	C	BUSH	4188.4	APPROACH (RW 21)	12.1	REMOVE	
113	C	BUSH	4188.6	APPROACH (RW 21)	13.0	REMOVE	
176		TOWER	4465	CONICAL	106.9		2011AWP08325OE
263		LIGHT_POLE	4182.8570	TRANSITIONAL	3.1	MARK AND LIGHT	
1910	B	TREE	4173.3890	TRANSITIONAL	7.1	REMOVE	
1913	B	TREE	4175.4340	TRANSITIONAL	1.7	REMOVE	
1915	B	TREE	4172.9350	PRIMARY	15.7	REMOVE	
1918	B	TREE	4172.9920	TRANSITIONAL	2.3	REMOVE	
1929	B	TREE	4172.8780	PRIMARY	15.4	REMOVE	
1940	B	TREE	4175.9450	PRIMARY	16.7	REMOVE	
1941	B	TREE	4176.5130	PRIMARY	17.2	REMOVE	
1942	B	TREE	4174.4690	PRIMARY	16.3	REMOVE	
1943	B	TREE	4173.5030	PRIMARY	15.9	REMOVE	
1944	B	TREE	4173.7870	PRIMARY	16.1	REMOVE	
1948	B	TREE	4177.0810	PRIMARY	17.5	REMOVE	
1949	B	TREE	4176.7410	PRIMARY	16.5	REMOVE	
2024	A	TREE	4148.9330	APPROACH (RW 3)	0.1	REMOVE	
2034	B	TREE	4162.2940	PRIMARY	5.9	REMOVE	
2035	B	TREE	4162.4870	PRIMARY	6.7	REMOVE	
2037	B	TREE	4163.9610	TRANSITIONAL	5.1	REMOVE	
2038	B	TREE	4164.0660	TRANSITIONAL	5.1	REMOVE	
2042	B	TREE	4161.9560	PRIMARY	6.1	REMOVE	
2043	B	TREE	4162.0040	PRIMARY	6.1	REMOVE	
2085	A	TREE	4145.5470	PRIMARY	4.2	REMOVE	
2086	A	TREE	4145.7880	PRIMARY	4.1	REMOVE	
2087	A	TREE	4150.6160	PRIMARY	9.0	REMOVE	
2124	A	TREE	4172.2970	PRIMARY	9.2	REMOVE	
2139	A	TREE	4146.3670	PRIMARY	4.4	REMOVE	
2171	A	TREE	4147.4780	PRIMARY	4.8	REMOVE	
2172	A	TREE	4147.7190	PRIMARY	5.2	REMOVE	
2173	A	TREE	4146.2230	PRIMARY	1.2	REMOVE	
2174	A	TREE	4147.0920	PRIMARY	4.4	REMOVE	

OBSTACLE DATA FROM FAA DOF DATED 3.26.2017

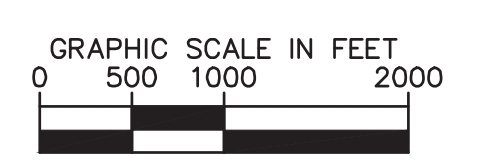
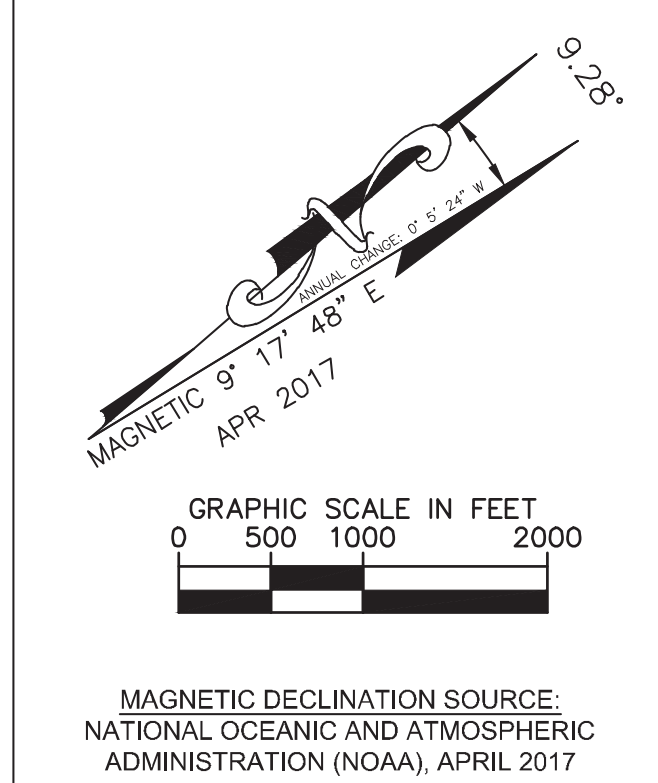


CITY OF DOUGLAS APPROVAL

RECOMMENDED BY: _____ DATE: _____

Lynn Kartchner
Airport Engineer

Luis Pedroza
Finance Director



MAGNETIC DECLINATION SOURCE:
NATIONAL OCEANIC AND ATMOSPHERIC
ADMINISTRATION (NOAA), APRIL 2017

CITY OF DOUGLAS
425 E. 10TH ST, DOUGLAS, TOMBSTONE, AZ, 85607

Kimley»Horn
1001 W. Southern Avenue Suite 131
Mesa, AZ 85210
www.kimley-horn.com

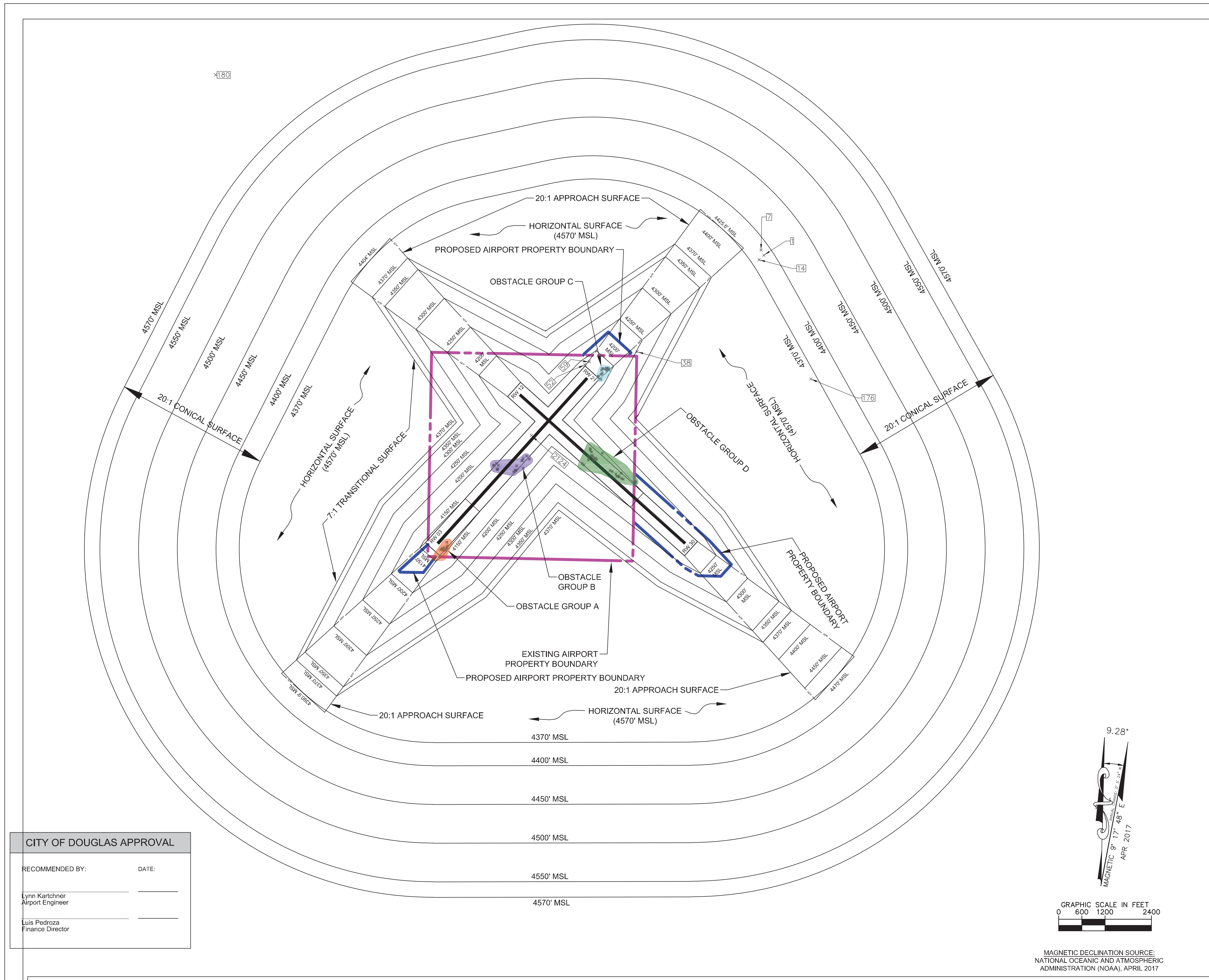
REVISIONS	BY	APPROVED	DATE

DOUGLAS MUNICIPAL AIRPORT
AIRPORT LAYOUT PLAN DRAWINGS
EXISTING AIRSPACE DRAWING

SCALE: HOR. 1"=1000' VERT. N/A

SHEET 5 OF 10 SHEETS

AIRSPACE PLAN.dwg Thursday, Nov. 30, 2017 10:42pm



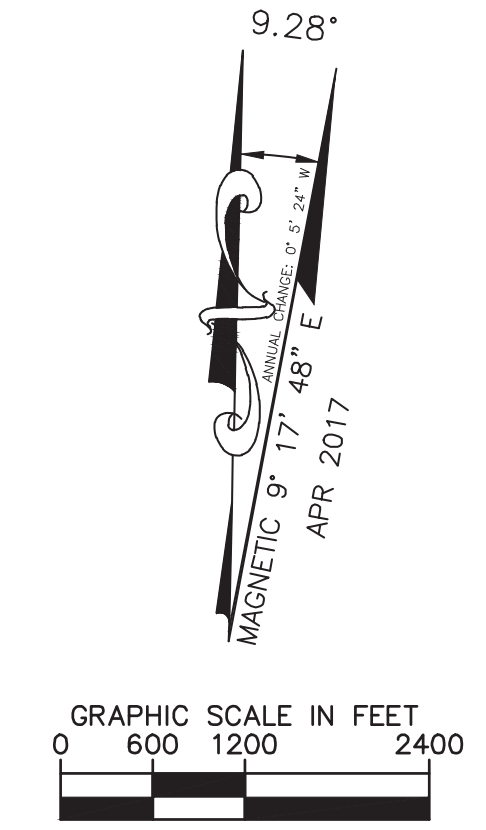
PART 77 OBSTRUCTION DATA							
OID	Group	Description	Object Height (ft MSL)	Penetrated Surface	Penetration	Disposition	FAA STUDY/ID#
1		GROUND	4365.7	NONE	NONE	NO ACTION	
7		GROUND	4364.0	NONE	NONE	NO ACTION	
14		GROUND	4344.8	NONE	NONE	NO ACTION	
38		TOWER	4258.8	TRANSITIONAL	5.4	RK AND LIGHT	
52		BUSH	4183.5	TRANSITIONAL	3.2	REMOVE	
97	C	TREE	4196.0	APPROACH (RW 21)	3.4	REMOVE	
98	C	TREE	4201.9	APPROACH (RW 21)	11.0	REMOVE	
99	C	TREE	4192.8	APPROACH (RW 21)	3.3	REMOVE	
100	C	TREE	4196.5	APPROACH (RW 21)	4.9	REMOVE	
101	C	TREE	4193.6	APPROACH (RW 21)	0.8	REMOVE	
102	C	TREE	4192.9	APPROACH (RW 21)	3.2	REMOVE	
103	C	BUSH	4190.8	APPROACH (RW 21)	2.6	REMOVE	
104	C	BUSH	4189.7	APPROACH (RW 21)	1.9	REMOVE	
105	C	BUSH	4189.0	APPROACH (RW 21)	3.4	REMOVE	
106	C	BUSH	4193.8	APPROACH (RW 21)	0.3	REMOVE	
108	C	BUSH	4190.9	APPROACH (RW 21)	9.6	REMOVE	
109	C	BUSH	4190.0	APPROACH (RW 21)	7.9	REMOVE	
110	C	BUSH	4189.6	APPROACH (RW 21)	6.1	REMOVE	
111	C	BUSH	4189.0	APPROACH (RW 21)	11.5	REMOVE	
112	C	BUSH	4188.4	APPROACH (RW 21)	12.1	REMOVE	
113	C	BUSH	4188.6	APPROACH (RW 21)	13.0	REMOVE	
176		TOWER	4465	CONICAL	96.0		2011AWP08320E
1910	B	TREE	4173.3890	TRANSITIONAL	4.3	REMOVE	
1913	B	TREE	4172.9350	PRIMARY	13.6	REMOVE	
1918	B	TREE	4172.9920	TRANSITIONAL	0.3	REMOVE	
1929	B	TREE	4172.8780	PRIMARY	13.2	REMOVE	
1940	B	TREE	4175.9450	PRIMARY	14.6	REMOVE	
1941	B	TREE	4176.5130	PRIMARY	15.0	REMOVE	
1942	B	TREE	4174.4690	PRIMARY	14.5	REMOVE	
1943	B	TREE	4173.5030	PRIMARY	13.6	REMOVE	
1944	B	TREE	4173.7870	PRIMARY	13.7	REMOVE	
1948	B	TREE	4177.0810	PRIMARY	15.4	REMOVE	
1949	B	TREE	4176.7410	PRIMARY	14.1	REMOVE	
1950	D	TREE	4195.1680	PRIMARY	12.1	REMOVE	
1951	D	TREE	4191.5750	PRIMARY	9.1	REMOVE	
1952	D	TREE	4194.3190	TRANSITIONAL	3.2	REMOVE	
1955	D	TREE	4194.3840	PRIMARY	13.7	REMOVE	
1956	D	TREE	4194.0580	PRIMARY	13.7	REMOVE	
1957	D	TREE	4194.9720	PRIMARY	13.8	REMOVE	
1958	D	TREE	4195.9520	PRIMARY	14.2	REMOVE	
1959	D	TREE	4196.1480	PRIMARY	14.2	REMOVE	
1960	D	TREE	4204.7050	PRIMARY	12.3	REMOVE	
1961	D	TREE	4204.6290	PRIMARY	11.7	REMOVE	
1962	D	TREE	4201.7700	PRIMARY	10.5	REMOVE	
1963	D	TREE	4201.1680	PRIMARY	10.2	REMOVE	
1964	D	TREE	4204.9310	PRIMARY	13.3	REMOVE	
1965	D	TREE	4201.5440	PRIMARY	10.1	REMOVE	
1970	D	TREE	4193.8620	PRIMARY	12.6	REMOVE	
1981	D	TREE	4194.3330	PRIMARY	11.4	REMOVE	
1982	D	TREE	4196.3470	PRIMARY	14.1	REMOVE	
1983	D	TREE	4196.2420	PRIMARY	12.7	REMOVE	
1984	D	TREE	4192.2290	PRIMARY	10.5	REMOVE	
1985	D	TREE	4194.9290	PRIMARY	11.5	REMOVE	
1989	D	TREE	4193.1350	PRIMARY	11.5	REMOVE	
1991	B	TREE	4162.1220	PRIMARY	0.1	REMOVE	
2024	A	TREE	4148.9330	APPROACH (RW 3)	0.1	REMOVE	
2034	B	TREE	4162.2940	PRIMARY	6.1	REMOVE	
2035	B	TREE	4162.4870	PRIMARY	6.8	REMOVE	
2037	B	TREE	4163.9610	TRANSITIONAL	5.3	REMOVE	
2038	B	TREE	4164.0660	TRANSITIONAL	5.4	REMOVE	
2042	B	TREE	4161.9560	PRIMARY	6.3	REMOVE	
2043	B	TREE	4162.0040	PRIMARY	6.2	REMOVE	
2085	A	TREE	4145.5470	PRIMARY	3.9	REMOVE	
2086	A	TREE	4145.7880	PRIMARY	3.9	REMOVE	
2087	A	TREE	4150.6160	PRIMARY	8.7	REMOVE	
2124		TREE	4172.2970	PRIMARY	9.7	REMOVE	
2135	A	TREE	4146.3670	PRIMARY	4.1	REMOVE	
2155	D	TREE	4215.7520	TRANSITIONAL	10.8	REMOVE	
2156	D	TREE	4211.3110	TRANSITIONAL	3.8	REMOVE	
2160	D	TREE	4200.3400	PRIMARY	11.2	REMOVE	
2161	D	TREE	4203.2000	PRIMARY	12.8	REMOVE	
2162	D	TREE	4201.9200	PRIMARY	13.5	REMOVE	
2164	D	TREE	4210.0920	PRIMARY	28.1	REMOVE	
2171	A	TREE	4147.4780	PRIMARY	4.4	REMOVE	
2172	A	TREE	4147.7190	PRIMARY	5.0	REMOVE	
2173	A	TREE	4146.2230	PRIMARY	1.0	REMOVE	
2174	A	TREE	4147.0920	PRIMARY	4.3	REMOVE	

OBSTACLE DATA FROM FAA DOF DATED 3/26/2017

CITY OF DOUGLAS APPROVAL

RECOMMENDED BY: _____ DATE: _____
 Lynn Katchner
 Airport Engineer

 Luis Pedroza
 Finance Director



MAGNETIC DECLINATION SOURCE:
 NATIONAL OCEANIC AND ATMOSPHERIC
 ADMINISTRATION (NOAA), APRIL 2017

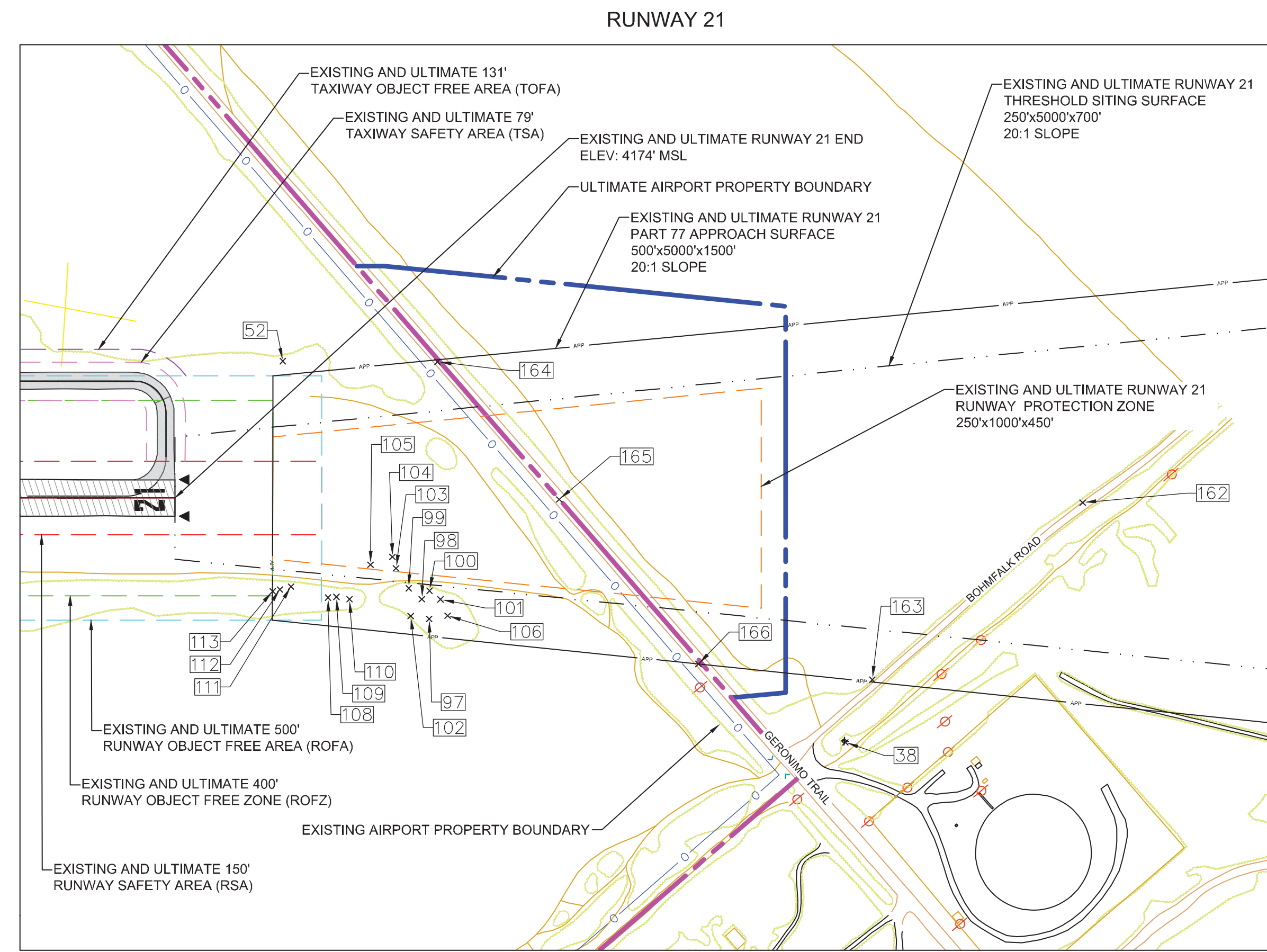
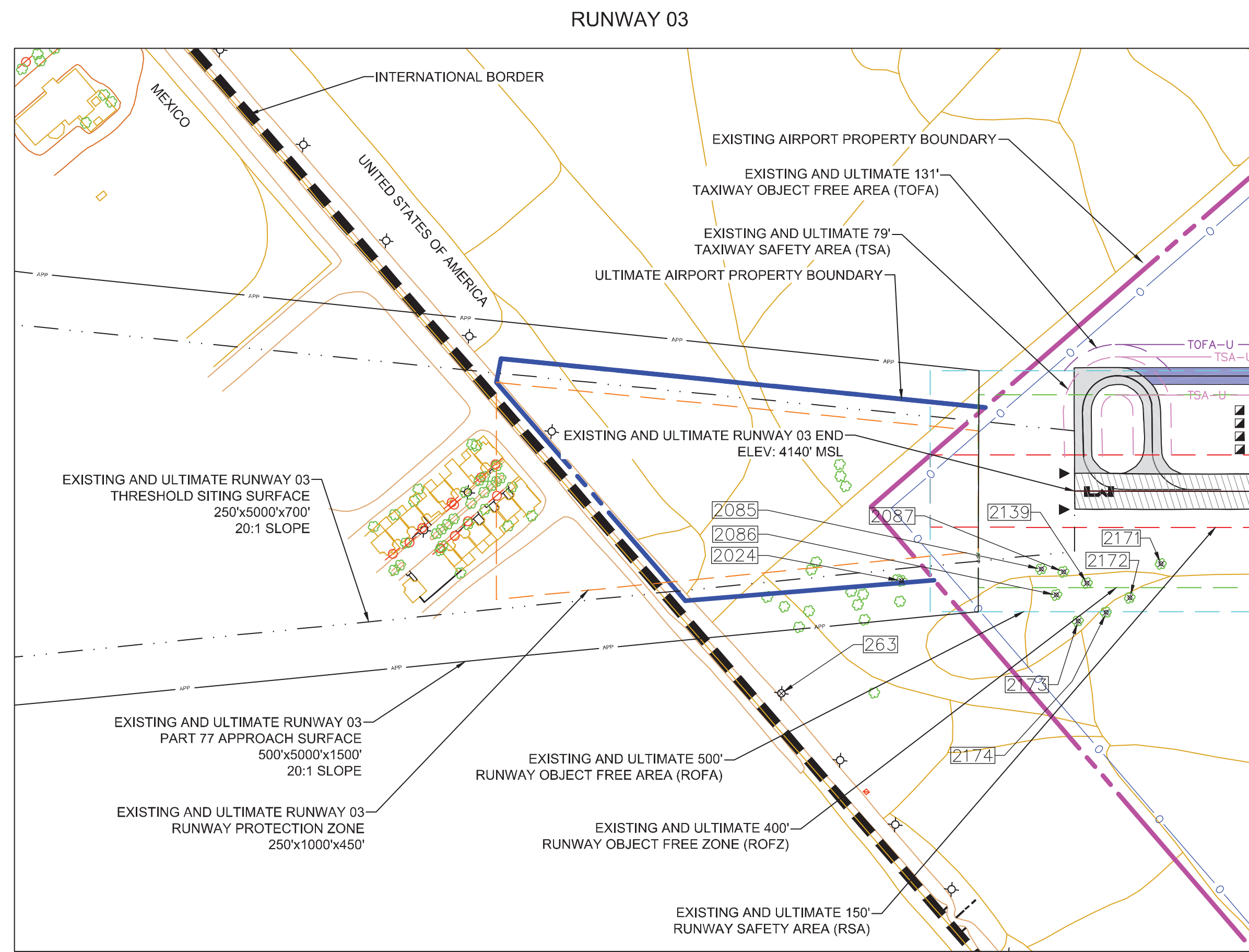
CITY OF DOUGLAS
 425 E. 10TH ST, DOUGLAS, TOMBSTONE, AZ, 85607

KimleyHorn
 1001 W. Southern Avenue Suite 131
 Mesa, AZ 85210
 www.kimley-horn.com

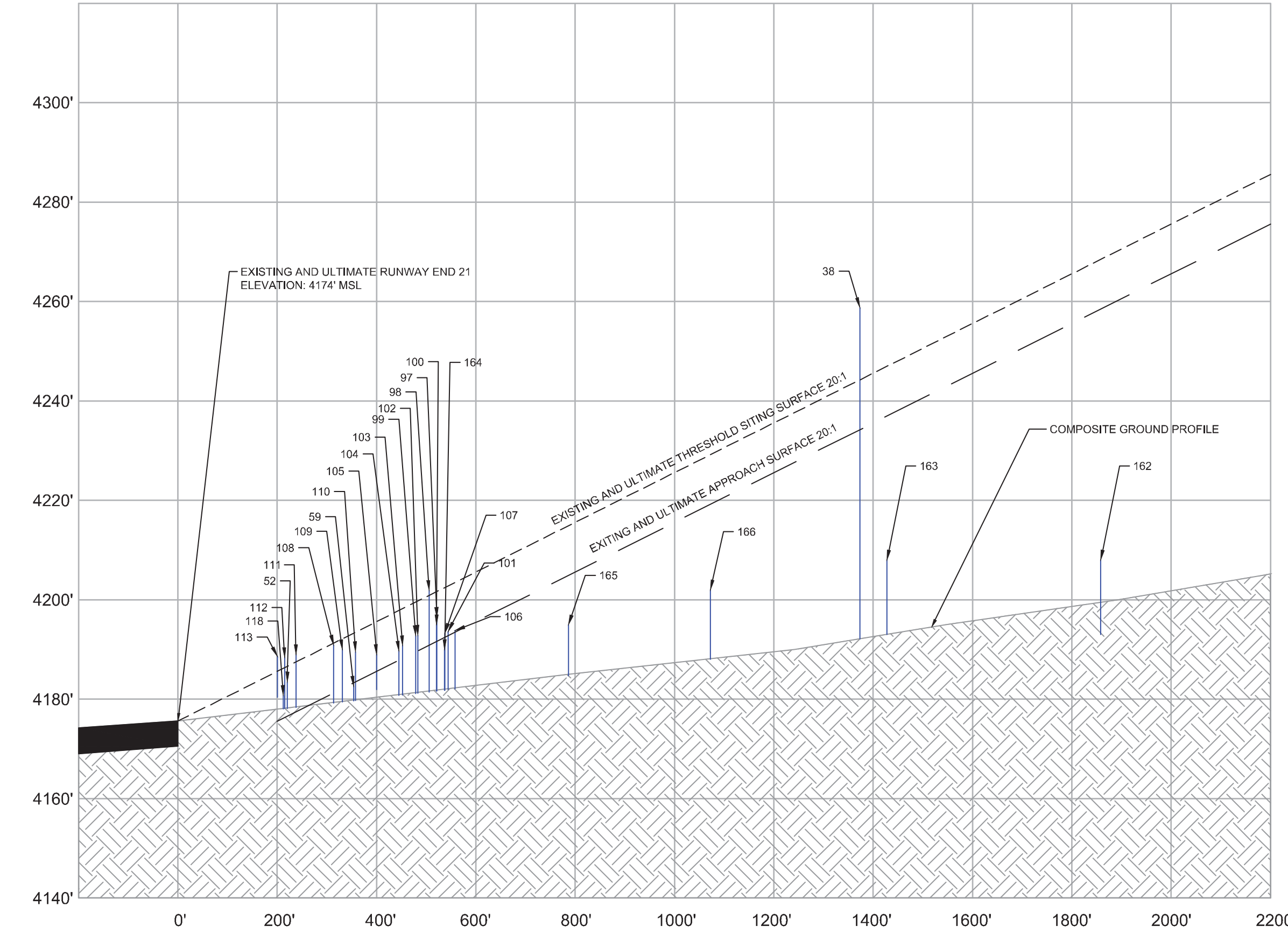
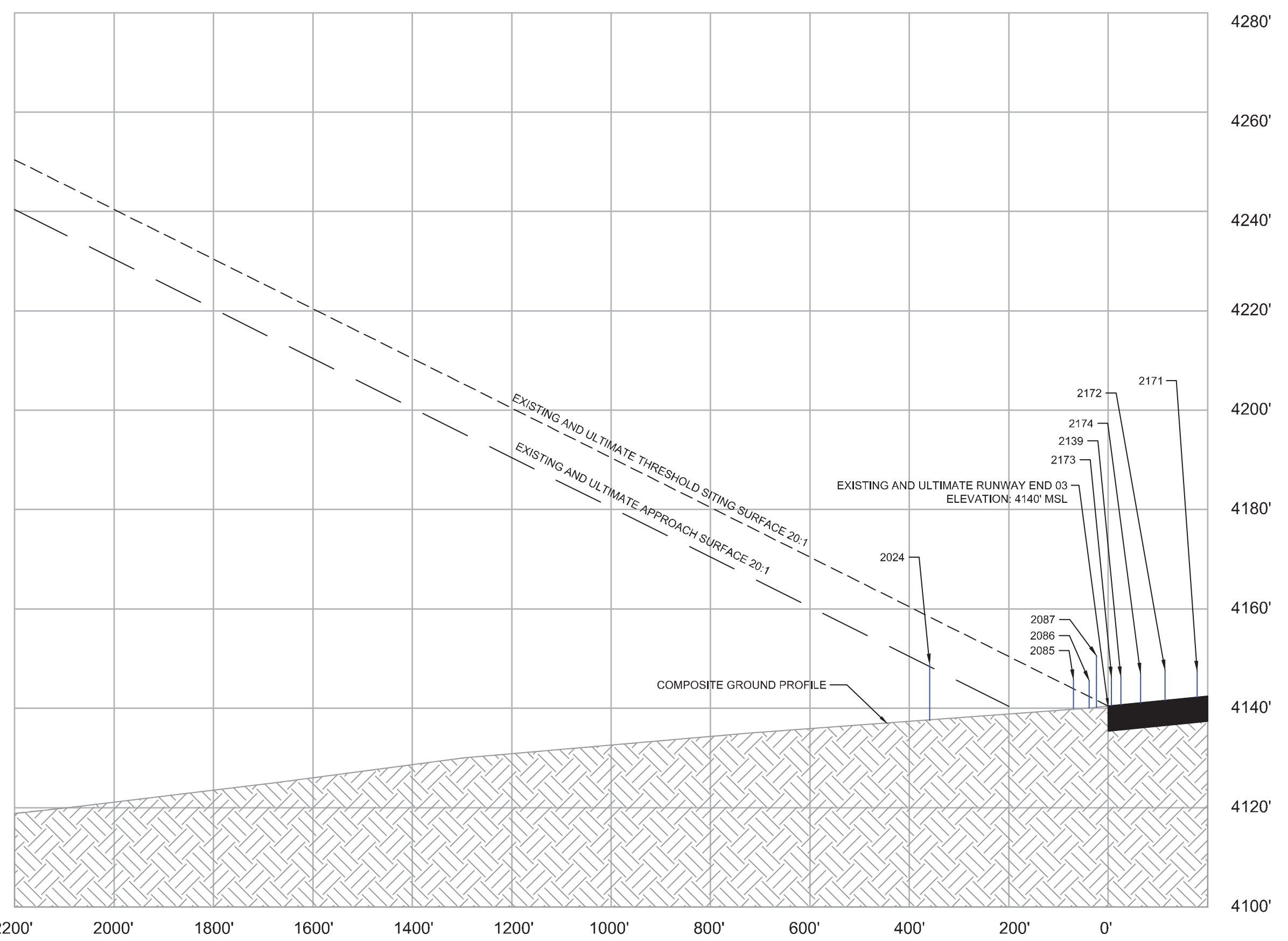
REVISIONS	BY	APPROVED	DATE

DOUGLAS MUNICIPAL AIRPORT
 AIRPORT LAYOUT PLAN DRAWINGS
 ULTIMATE AIRSPACE DRAWING

SCALE: HOR. 1"=1200' VERT. N/A
 SHEET 6 OF 10 SHEETS

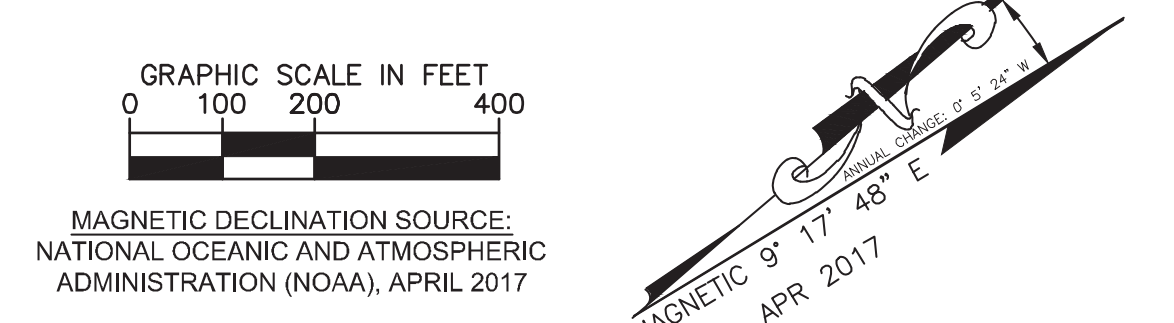


LEGEND		
Description	Existing	Ultimate
Airport Property Line		
Runway Obstacle Free Area (ROFA)		
Runway Obstacle Free Zone (ROFZ)		
Runway Safety Area (RSA)		
25' Building Restriction Line (BRL)		
Runway Protection Zone (RPZ)		
Runway Visibility Zone (RVZ)	N/A	
Part 77 Approach Surface		
Threshold Siting Surface		
Taxiway Safety Area (TSA)		
Taxiway Object Free Area (TOFA)		
Final Approach and Takeoff Area	N/A	
Elevation	41.90	N/A
Runway Pavements		
Airfield Pavements		
Buildings		
Segmented Circle		
Rotating Beacon		
Aircraft Tie-Downs		
Airport Reference Point		
PAPI		
REIL		
Fence		
Unpaved Path or Trail		N/A
Lightpole		N/A
Utility Pole		N/A
Tree		N/A
Brushline		N/A



OBSTRUCTION DATA - INNER PORTION OF THE APPROACH						
OID	Description	Object Height (ft. MSL)	Penetrated Surface	Penetration	Disposition	FAA STUDY/ID#
38	TOWER	4258.8	TRANSITIONAL	5.4	RK AND LIGHT	
97	TREE	4195.0	APPROACH (RW 21)	3.4	REMOVE	
98	TREE	4201.9	APPROACH (RW 21)	11.0	REMOVE	
99	TREE	4192.8	APPROACH (RW 21)	3.3	REMOVE	
100	TREE	4196.5	APPROACH (RW 21)	4.9	REMOVE	
101	TREE	4193.6	APPROACH (RW 21)	0.8	REMOVE	
102	TREE	4192.9	APPROACH (RW 21)	3.2	REMOVE	
103	BUSH	4190.8	APPROACH (RW 21)	2.6	REMOVE	
104	BUSH	4189.7	APPROACH (RW 21)	1.9	REMOVE	
105	BUSH	4189.0	APPROACH (RW 21)	3.4	REMOVE	
106	BUSH	4193.8	APPROACH (RW 21)	0.3	REMOVE	
108	BUSH	4190.9	APPROACH (RW 21)	9.6	REMOVE	
109	BUSH	4190.0	APPROACH (RW 21)	7.9	REMOVE	
110	BUSH	4189.6	APPROACH (RW 21)	6.1	REMOVE	
111	BUSH	4189.0	APPROACH (RW 21)	11.5	REMOVE	
112	BUSH	4188.4	APPROACH (RW 21)	12.1	REMOVE	
113	BUSH	4188.6	APPROACH (RW 21)	13.0	REMOVE	
162	BOHMFALK ROAD	4205 (EST.)	NONE	NONE	NONE	
163	BOHMFALK ROAD	4206 (EST.)	NONE	NONE	NONE	
164	GERONIMO TRAIL	4207 (EST.)	NONE	NONE	NONE	
165	GERONIMO TRAIL	4208 (EST.)	NONE	NONE	NONE	
166	GERONIMO TRAIL	4209 (EST.)	NONE	NONE	NONE	
263	LIGHT POLE	4182.8570	TRANSITIONAL	2.9		
2024	TREE	4148.9330	APPROACH (RW 3)	0.1	REMOVE	
2085	TREE	4145.5470	PRIMARY	3.9	REMOVE	
2086	TREE	4145.7880	PRIMARY	3.9	REMOVE	
2087	TREE	4150.6160	PRIMARY	8.7	REMOVE	
2139	TREE	4146.3670	PRIMARY	4.1	REMOVE	
2171	TREE	4147.4780	PRIMARY	4.4	REMOVE	
2172	TREE	4147.7190	PRIMARY	5.0	REMOVE	
2173	TREE	4146.2230	PRIMARY	1.0	REMOVE	
2174	TREE	4147.0920	PRIMARY	4.3	REMOVE	

OBSTACLE DATA FROM FAA DOF DATED 3/26/2017



CITY OF DOUGLAS
425 E. 10TH ST, DOUGLAS, TOMBSTONE, AZ, 85607

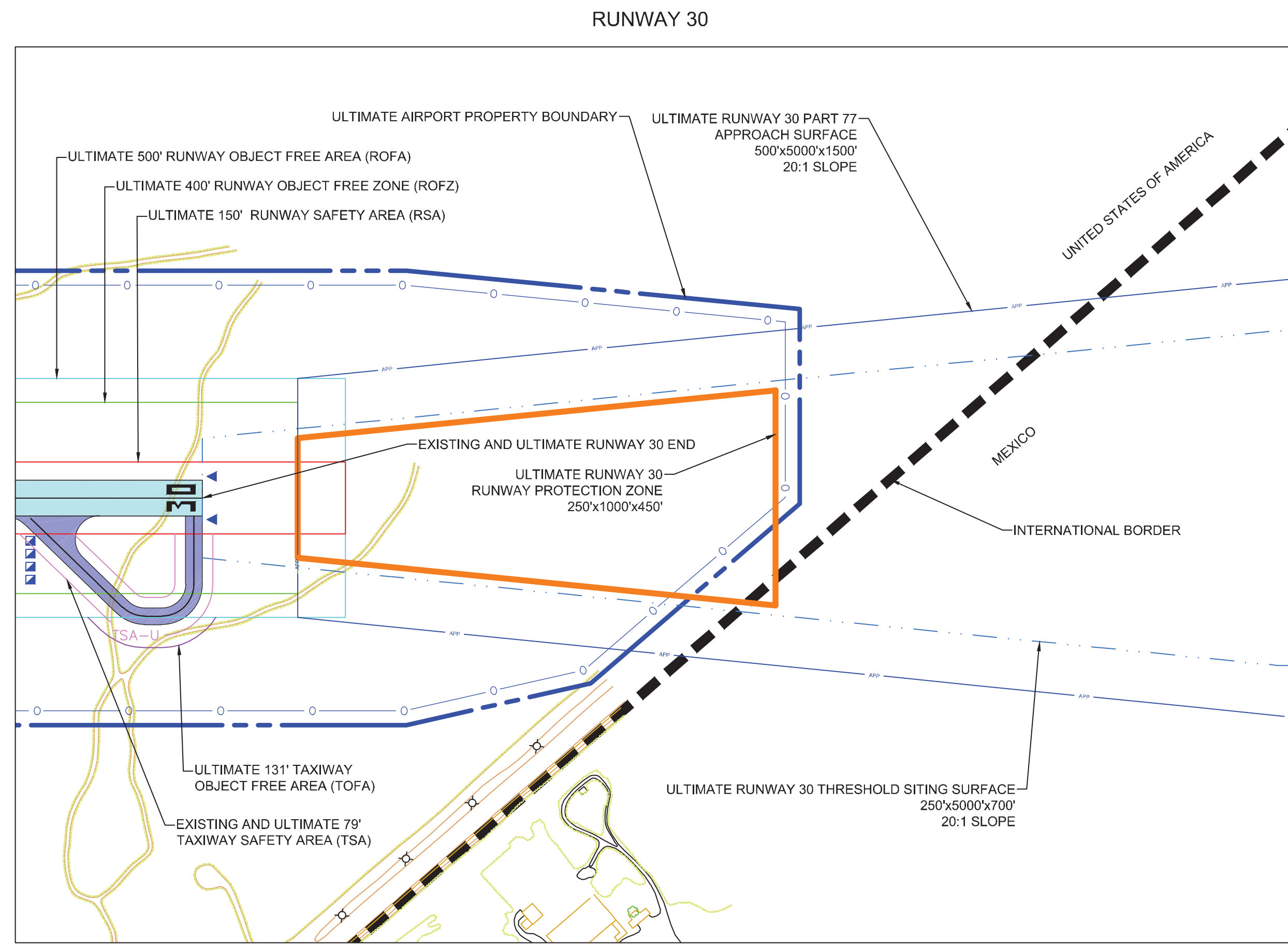
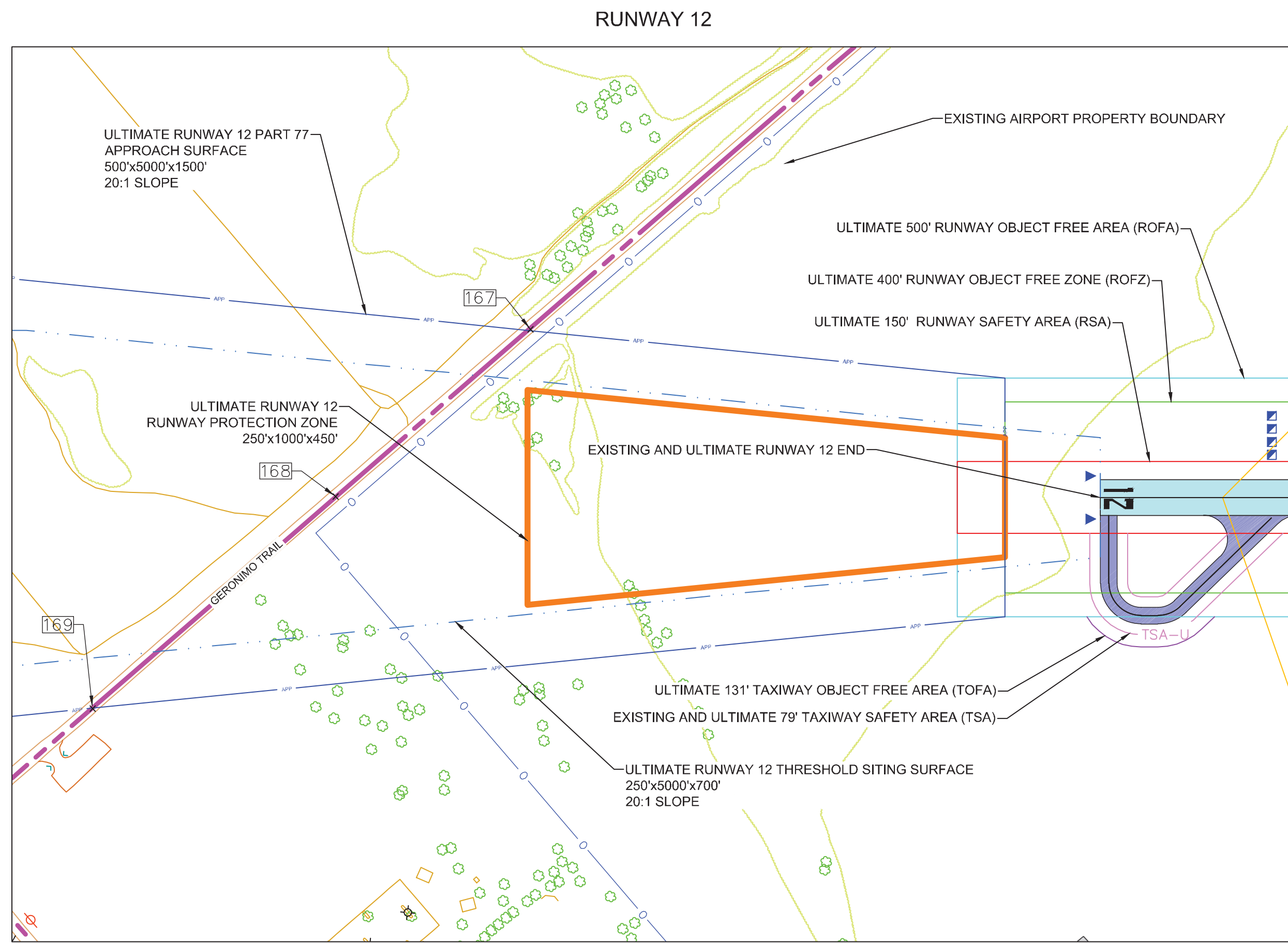
KimleyHorn
1001 W. Southern Avenue Suite 131
Mesa, AZ 85210
www.kimley-horn.com

REVISIONS	BY	APPROVED	DATE

DOUGLAS MUNICIPAL AIRPORT
AIRPORT LAYOUT PLAN DRAWINGS
INNER PORTION OF THE APPROACH - RW 03-21

SCALE: HOR. 1"=200' VERT. 1"=20'
SHEET 7 OF 10 SHEETS

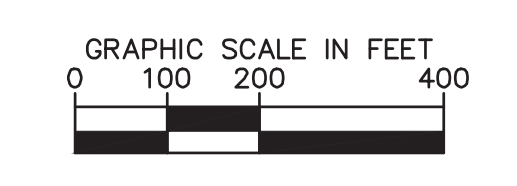
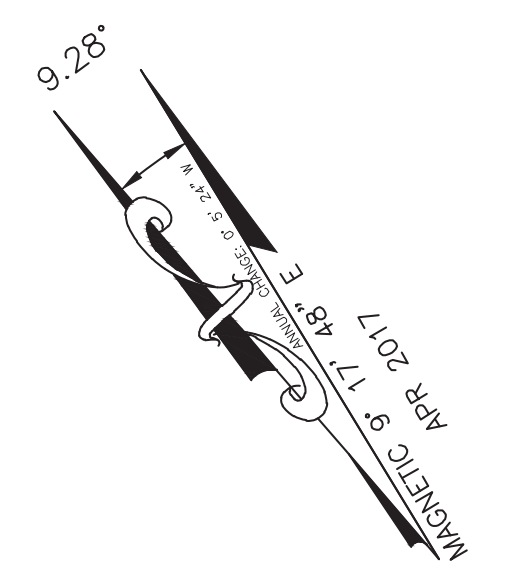
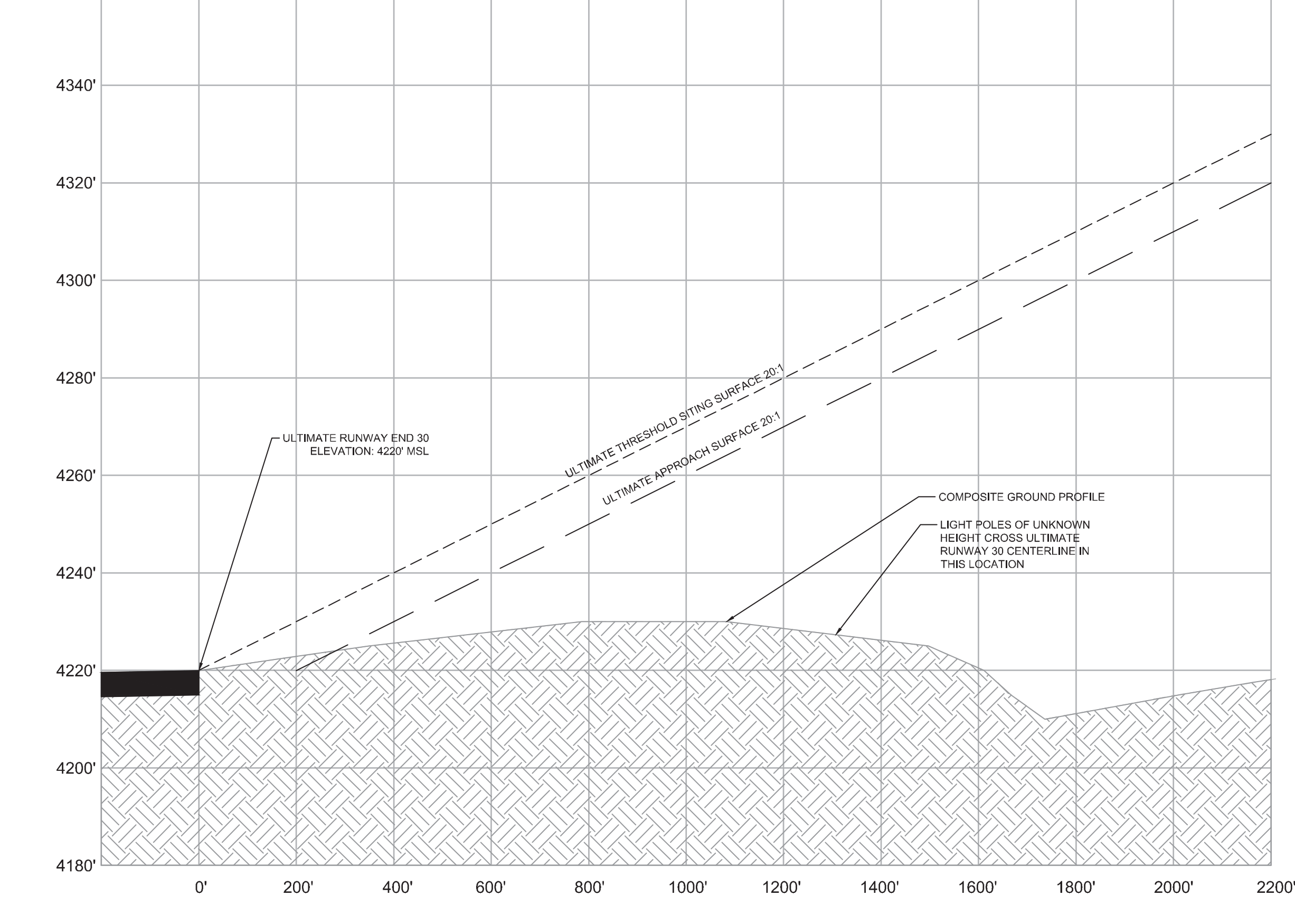
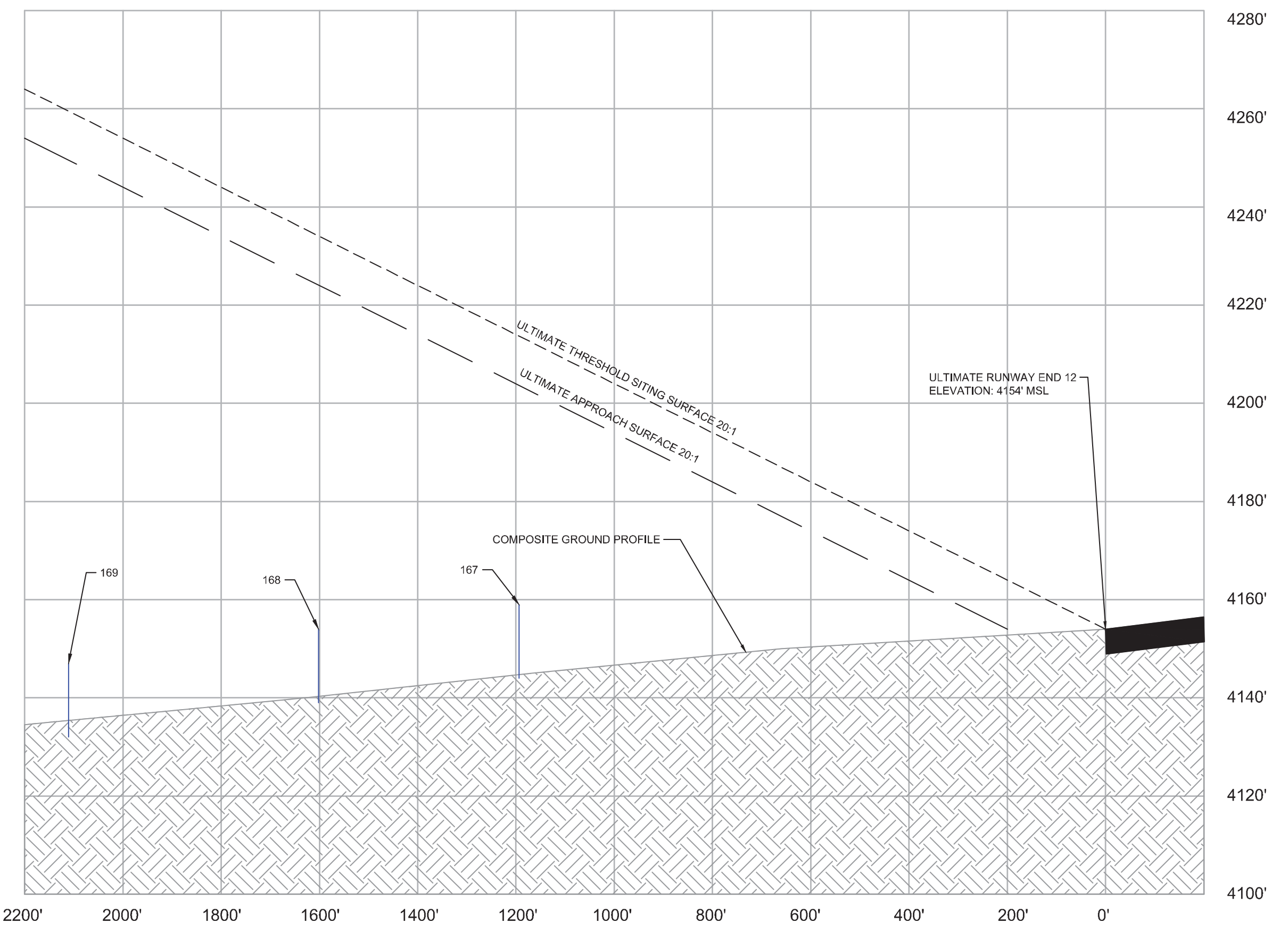
IPASD.dwg Thursday, Nov. 30 2017 10:43pm



LEGEND		
Description	Existing	Ultimate
Airport Property Line		
Runway Obstacle Free Area (ROFA)		
Runway Obstacle Free Zone (ROFZ)		
Runway Safety Area (RSA)		
25' Building Restriction Line (BRL)		
Runway Protection Zone (RPZ)		
Runway Visibility Zone (RVZ)	N/A	
Part 77 Approach Surface		
Threshold Siting Surface		
Taxiway Safety Area (TSA)		
Taxiway Object Free Area (TOFA)		
Final Approach and Takeoff Area	N/A	
Elevation	41 90	N/A
Runway Pavements		
Airfield Pavements		
Buildings		
Segmented Circle		
Rotating Beacon		
Aircraft Tie-Downs		
Airport Reference Point		
PAPI		
REIL		
Fence		
Unpaved Path or Trail		N/A
Lightpole		N/A
Utility Pole		N/A
Tree		N/A
Brushline		N/A

OBSTRUCTION DATA - INNER PORTION OF THE APPROACH						
OID	Description	Object Height [ft MSL]	Penetrated Surface	Penetration	Disposition	FAA STUDY/ID#
167	GERONIMO_TRAIL	4210 (EST.)	NONE	NONE		
168	GERONIMO_TRAIL	4211 (EST.)	NONE	NONE		
169	GERONIMO_TRAIL	4212 (EST.)	NONE	NONE		

OBSTACLE DATA FROM FAA DOF DATED 3.26.2017



MAGNETIC DECLINATION SOURCE:
NATIONAL OCEANIC AND ATMOSPHERIC
ADMINISTRATION (NOAA), APRIL 2017

SCALE: HOR. 1"=200' VERT. 1"=20'

SHEET 8 OF 10 SHEETS

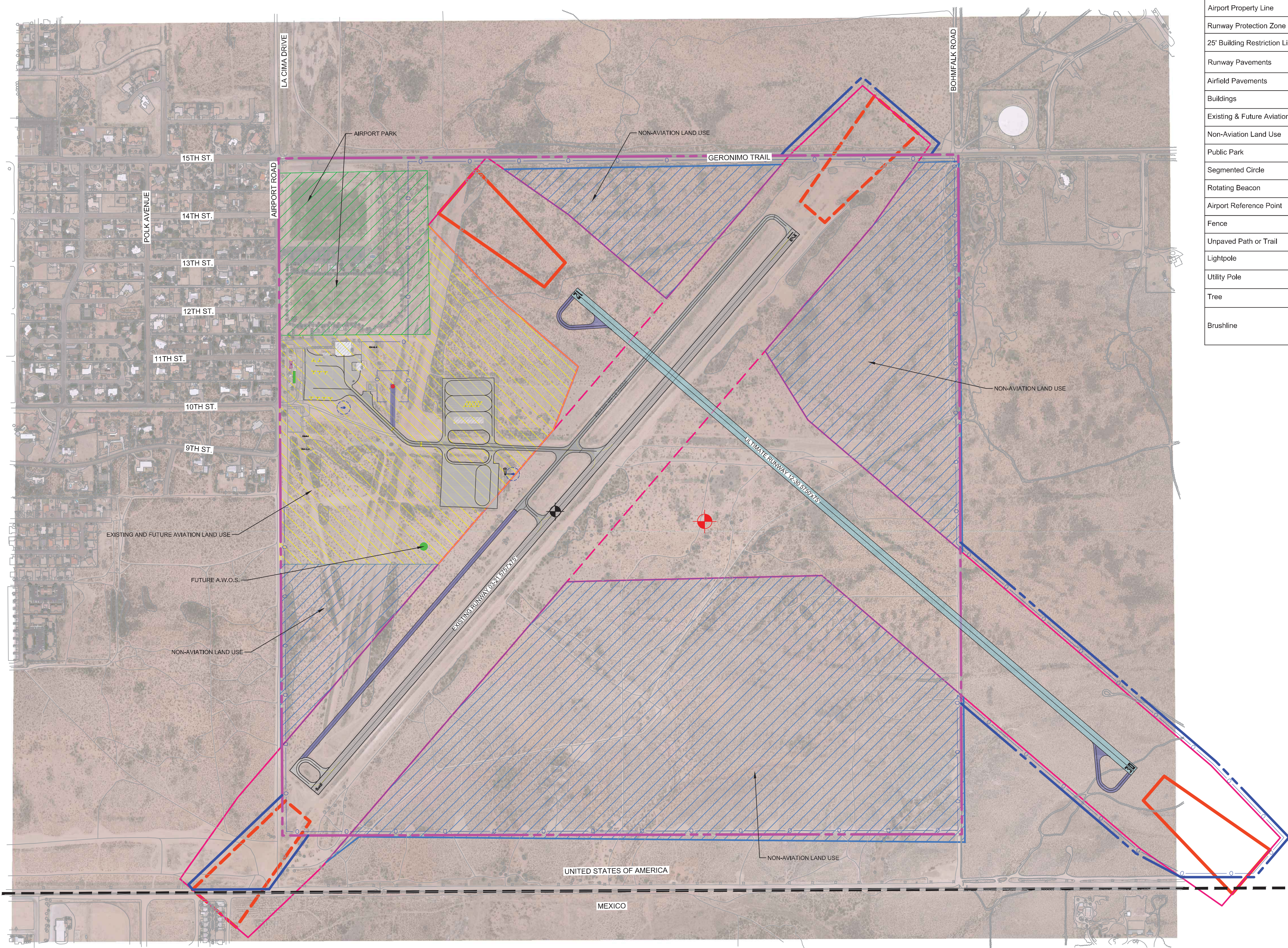
CITY OF DOUGLAS
425 E. 10TH ST, DOUGLAS, TOMBSTONE, AZ, 85607

Kimley»Horn
1001 W. Southern Avenue Suite 131
Mesa, AZ 85210
www.kimley-horn.com

REVISIONS	BY	APPROVED	DATE

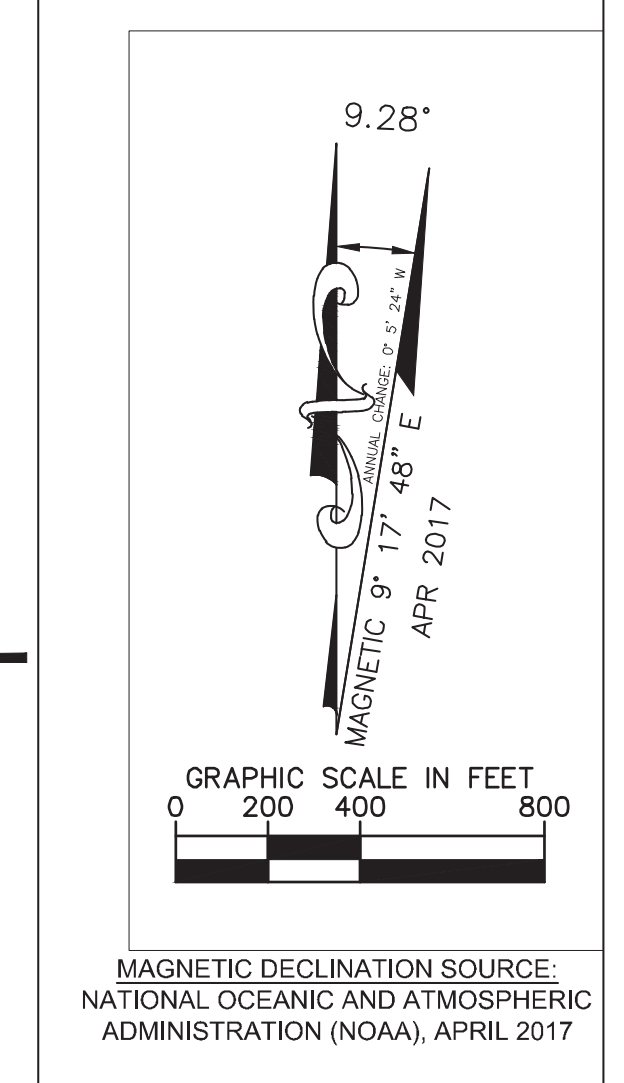
DOUGLAS MUNICIPAL AIRPORT
AIRPORT LAYOUT PLAN DRAWINGS
INNER PORTION OF THE APPROACH - RW 12-30

IPASD.dwg Thursday, Nov. 30 2017 10:43pm



LEGEND - AIRPORT LAND USE MAP		
Description	Existing	Ultimate
Airport Property Line		
Runway Protection Zone (RPZ)		
25' Building Restriction Line (BRL)		
Runway Pavements		
Airfield Pavements		
Buildings		
Existing & Future Aviation Land Use		
Non-Aviation Land Use		
Public Park		
Segmented Circle		
Rotating Beacon		
Airport Reference Point		
Fence		
Unpaved Path or Trail		N/A
Lightpole		N/A
Utility Pole		N/A
Tree		N/A
Brushline		N/A

IMAGE SOURCE: QUANTUM SPATIAL, COMPILED BY PHOTOGRAMMETRIC METHODS FROM AERIAL PHOTOGRAPHY DATED 5-11-2016



MAGNETIC DECLINATION SOURCE: NATIONAL OCEANIC AND ATMOSPHERIC ADMINISTRATION (NOAA), APRIL 2017

CITY OF DOUGLAS
425 E. 10TH ST, DOUGLAS, TOMBSTONE, AZ, 85607

Kimley»Horn
1001 W. Southern Avenue Suite 131
Mesa, AZ 85210
www.kimley-horn.com

REVISIONS	BY	APPROVED	DATE

DOUGLAS MUNICIPAL AIRPORT
AIRPORT LAYOUT PLAN DRAWINGS
AIRPORT LAND USE MAP

SCALE: HOR. 1"=400' VERT. N/A
SHEET 9 OF 10 SHEETS

LAND USE MAP.dwg Thursday, Nov 30 2017 10:44pm

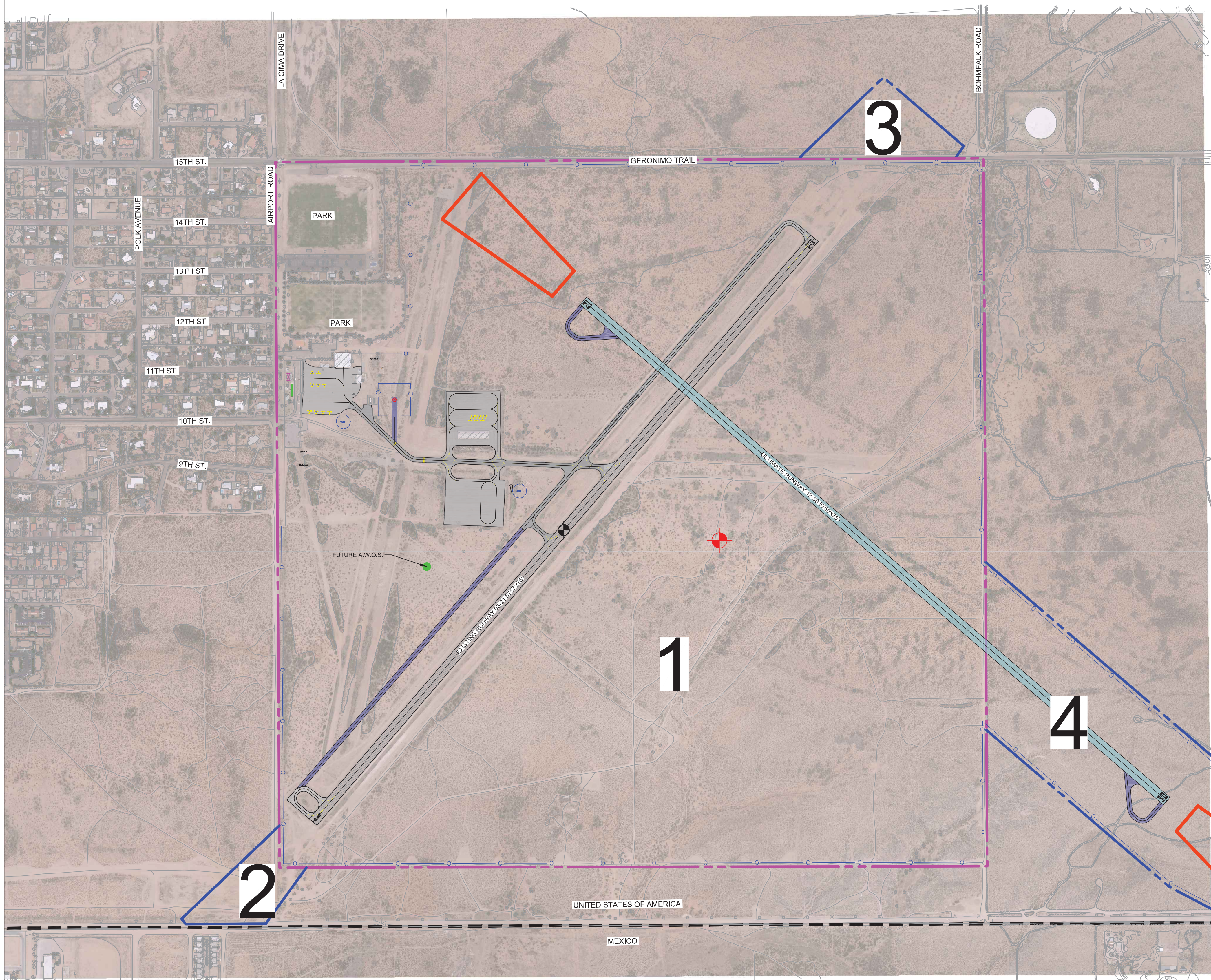
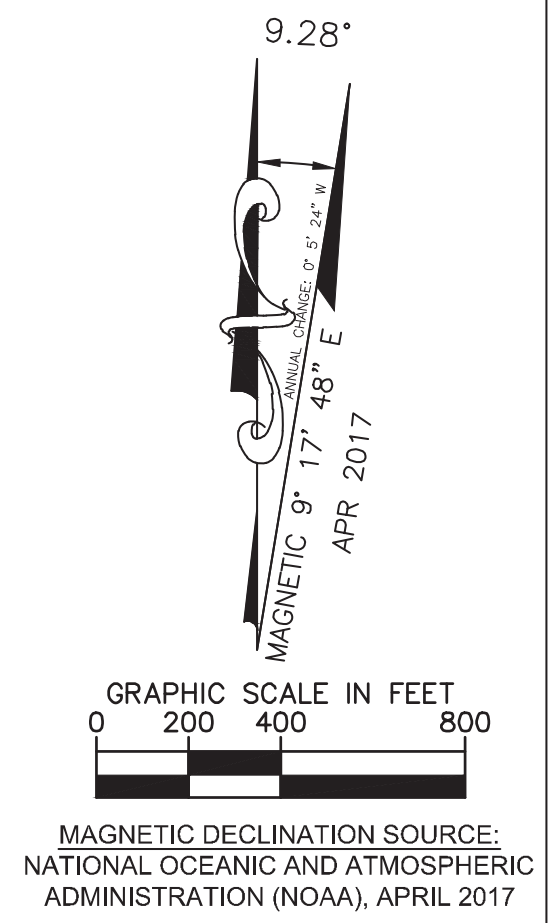


IMAGE SOURCE: QUANTUM SPATIAL, COMPILED BY PHOTOGRAMMETRIC METHODS FROM AERIAL PHOTOGRAPHY DATED 5-11-2016

LEGEND - AIRPORT LAND USE MAP		
Description	Existing	Ultimate
Airport Property Line		
Runway Protection Zone (RPZ)		
25' Building Restriction Line (BRL)		
Runway Pavements		
Airfield Pavements		
Buildings		
Existing & Future Aviation Land Use		
Non-Aviation Land Use		
Public Park		

EXISTING AIRPORT PROPERTY					
MAP NUMBER	DATE OF ACQUISITION	GRANTOR	TYPE OF ACQUISITION	ACREAGE	TAX PARCEL NUMBER
1	UNKNOWN	UNKNOWN	FEE ACQUISITION	643.2	410-01-005

EXISTING AIRPORT PROPERTY					
MAP NUMBER	DATE OF ACQUISITION	GRANTOR	TYPE OF ACQUISITION	ACREAGE	TAX PARCEL NUMBER
2	FUTURE		FEE ACQUISITION	9.2	
3	FUTURE		AVIGATION EASEMENT	11.0	
4	FUTURE		FEE ACQUISITION	62.2	



MAGNETIC DECLINATION SOURCE: NATIONAL OCEANIC AND ATMOSPHERIC ADMINISTRATION (NOAA), APRIL 2017

CITY OF DOUGLAS
425 E. 10TH ST, DOUGLAS, TOMBSTONE, AZ, 85607

Kimley»Horn
1001 W. Southern Avenue Suite 131
Mesa, AZ 85210
www.kimley-horn.com

REVISIONS	BY	APPROVED	DATE

DOUGLAS MUNICIPAL AIRPORT
AIRPORT LAYOUT PLAN DRAWINGS
AIRPORT PROPERTY MAP

SCALE: HOR. 1"=400' VERT. N/A

SHEET 10 OF 10 SHEETS

PROPERTY MAP.dwg Thursday, Nov 30 2017 10:46pm